



INDIANA
DEPARTMENT OF
WORKFORCE
DEVELOPMENT

Indiana's Employment and Labor Force Estimates July 2017

08/15/2017

Key Points

- **The Indiana Unemployment Rate is 3.1% in July 2017.**
Nationally the rate is 4.3%.
- Indiana's rate has decreased 1.4 percentage points over the year from July 2016.
- Indiana's Labor Force decreased 1,077 due to a decrease in employment of 4,008 and an increase in unemployment of 2,931.
- Indiana's labor force has increased by 3,398 over the year.
- Indiana's labor force participation rate decreased 0.1 percentage points over the month and is currently 64.3%. This remains above the U.S. Labor Force Participation rate which stands at 62.9%.
- July total private employment is 11,400 above the November 2016 peak.

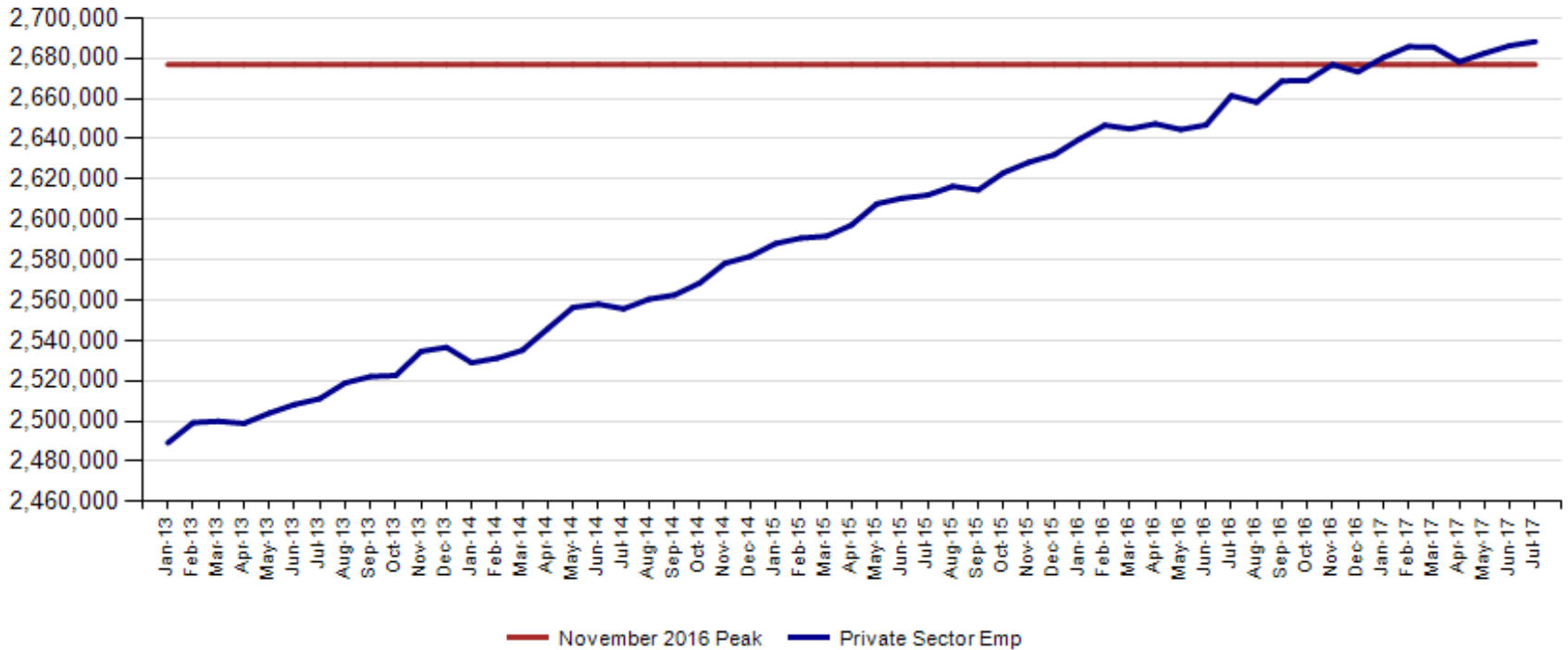
Key Points

Indiana total private employment increased by 2,000 over the month and had gains of 26,800 over the year.

- Indiana July private employment stands at 2,688,300.
- Private Educational & Health Services had gains of 3,600 over the month.
- Leisure and Hospitality had gains of 2,300.
- Manufacturing had gains of 1,000.
- Professional and Business Services lost 800.
- Construction lost 700.
- Trade, Transportation and Utilities lost 600.

July total private employment is 11,400 above the November 2016 peak.

Indiana Private Sector Employment





July 2017 Indiana private sector employment increased by 2,000 jobs over the month and is up 26,800 over the year. Private Educational & Health Services increased by 3,600. Leisure and Hospitality grew by 2,300 and Manufacturing grew by 1,000.

IN Employment Change Over the Month, Year-to-Date and Over the Year (seasonally adjusted)							
Industry	July 2016	December 2016	June 2017	July 2017	Month Change	Y-to-D Change	Y-to-Y Change
Private Educational & Health Services	465.0	470.0	474.6	478.2	3.6	8.2	13.2
.....Private Educational Services	69.2	71.3	71.0	72.3	1.3	1.0	3.1
.....Health Care & Social Assistance	395.8	398.7	403.6	405.9	2.3	7.2	10.1
Manufacturing	527.0	526.9	527.0	528.0	1.0	1.1	1.0
Professional & Business Services	335.6	337.3	342.7	341.9	-0.8	4.6	6.3
Financial Activities	134.4	134.8	139.2	137.0	-2.2	2.2	2.6
Construction	130.8	128.8	137.7	137.0	-0.7	8.2	6.2
Leisure and Hospitality	307.6	310.2	307.3	309.6	2.3	-0.6	2.0
Trade, Transportation & Utilities	596.0	598.4	590.7	590.1	-0.6	-8.3	-5.9
.....Trade	451.7	455.2	451.5	450.9	-0.6	-4.3	-0.8
.....Transportation, Warehousing & Utilities	144.3	143.2	139.2	139.2	0.0	-4.0	-5.1
All Other	165.1	166.9	167.1	166.5	-0.6	-0.4	1.4
Total Private	2,661.5	2,673.3	2,686.3	2,688.3	2.0	15.0	26.8
Government (Includes Public Schools & Hospitals)	426.5	430.6	431.8	427.0	-4.8	-3.6	0.5
Total Nonfarm	3,088.0	3,103.9	3,118.1	3,115.3	-2.8	11.4	27.3
United States Total Private	122,200.0	123,026.0	124,052.0	124,257.0	205.0	1,231.0	2,057.0



July 2017 estimates show Indiana has gained 365,100 in Private jobs since the July 2009 trough. Manufacturing has accounted for 101,100 of those jobs.

IN Statewide Estimates (seasonally adjusted) -- July 2017							
Supersector	Private Empl. Peak Nov 2016	Private Empl. Trough July 2009	June 2017	July 2017	Change Since Peak	Change Since Trough	Month to Month Change
Private Educational & Health Services	472.1	411.1	474.6	478.2	6.1	67.1	3.6
.....Private Educational Services	74.2	63.3	71.0	72.3	-1.9	9.0	1.3
.....Health Care & Social Assistance	397.9	347.8	403.6	405.9	8.0	58.1	2.3
Manufacturing	524.6	426.9	527.0	528.0	3.4	101.1	1.0
Professional & Business Services	340.7	256.9	342.7	341.9	1.2	85.0	-0.8
Financial Activities	134.9	130.7	139.2	137.0	2.1	6.3	-2.2
Construction	129.1	116.5	137.7	137.0	7.9	20.5	-0.7
Leisure and Hospitality	309.5	276.8	307.3	309.6	0.1	32.8	2.3
Trade, Transportation & Utilities	598.8	545.7	590.7	590.1	-8.7	44.4	-0.6
.....Trade	454.5	421.6	451.5	450.9	-3.6	29.3	-0.6
.....Transportation, Warehousing & Utilities	144.3	124.1	139.2	139.2	-5.1	15.1	0.0
All Other	167.2	158.6	167.1	166.5	-0.7	7.9	-0.6
Total Private	2,676.9	2,323.2	2,686.3	2,688.3	11.4	365.1	2.0
Government (Includes Public Schools & Hospitals)	431.4	434.5	431.8	427.0	-4.4	-7.5	-4.8
Total Nonfarm	3,108.3	2,757.7	3,118.1	3,115.3	7.0	357.6	-2.8
United States Total Private	122,876.0	108,171.0	124,052.0	124,257.0	1,381.0	16,086.0	205.0

Source: Current Employment Statistics, seasonally adjusted



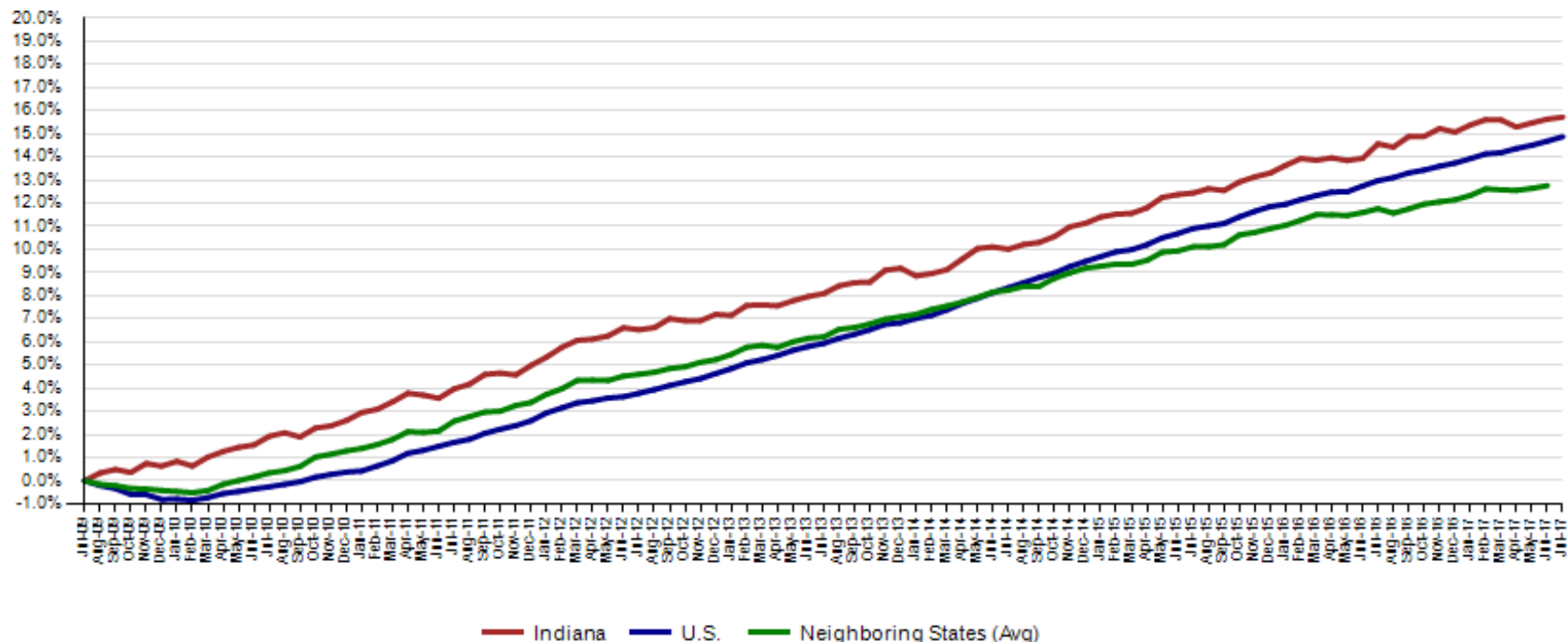
Indiana job growth over the month trailed the national trend in private sector gains in July. Indiana Private Educational Services and Financial Activities, are growing faster than the U.S. over the month and over the year.

IN Employment Change Compared to the U.S.

Industry	Indiana Month to Month	U.S. Month to Month	Indiana vs U.S. Change	Indiana Year-to-Date	U.S. Year-to-Date	Indiana vs U.S. Change	Indiana Year-to-Year	U.S. Year-to-Year	Indiana vs U.S. Change
Private Educational & Health Services	0.8%	0.2%	OVER	1.7%	1.2%	OVER	2.8%	2.2%	OVER
.....Private Educational Services	1.8%	0.3%	OVER	1.4%	0.6%	OVER	4.5%	2.2%	OVER
.....Health Care & Social Assistance	0.6%	0.2%	OVER	1.8%	1.3%	OVER	2.6%	2.3%	OVER
Manufacturing	0.2%	0.1%	OVER	0.2%	0.7%	UNDER	0.2%	0.5%	UNDER
Professional & Business Services	-0.2%	0.2%	UNDER	1.4%	1.6%	UNDER	1.9%	2.9%	UNDER
Financial Activities	-1.6%	0.1%	UNDER	1.6%	1.0%	OVER	1.9%	1.8%	OVER
Construction	-0.5%	0.1%	UNDER	6.4%	1.7%	OVER	4.7%	2.8%	OVER
Leisure and Hospitality	0.7%	0.4%	OVER	-0.2%	1.6%	UNDER	0.7%	2.2%	UNDER
Trade, Transportation & Utilities	-0.1%	0.0%	UNDER	-1.4%	0.1%	UNDER	-1.0%	0.5%	UNDER
.....Trade	-0.1%	0.0%	UNDER	-0.9%	0.0%	UNDER	-0.2%	0.3%	UNDER
.....Transportation, Warehousing & Utils	0.0%	0.0%	UNDER	-2.8%	0.4%	UNDER	-3.5%	1.6%	UNDER
All Other	-0.4%	0.1%	UNDER	-0.2%	0.8%	UNDER	0.8%	0.8%	OVER
Total Private	0.1%	0.2%	UNDER	0.6%	1.0%	UNDER	1.0%	1.7%	UNDER
Government (Includes Public Schools & Hospitals)	-1.1%	0.0%	UNDER	-0.8%	0.3%	UNDER	0.1%	0.5%	UNDER
Total Nonfarm	-0.1%	0.1%	UNDER	0.4%	0.9%	UNDER	0.9%	1.5%	UNDER

Since the low point of employment in July 2009, private sector employment growth in Indiana has surpassed the U.S. (15.7% vs. 14.9%).

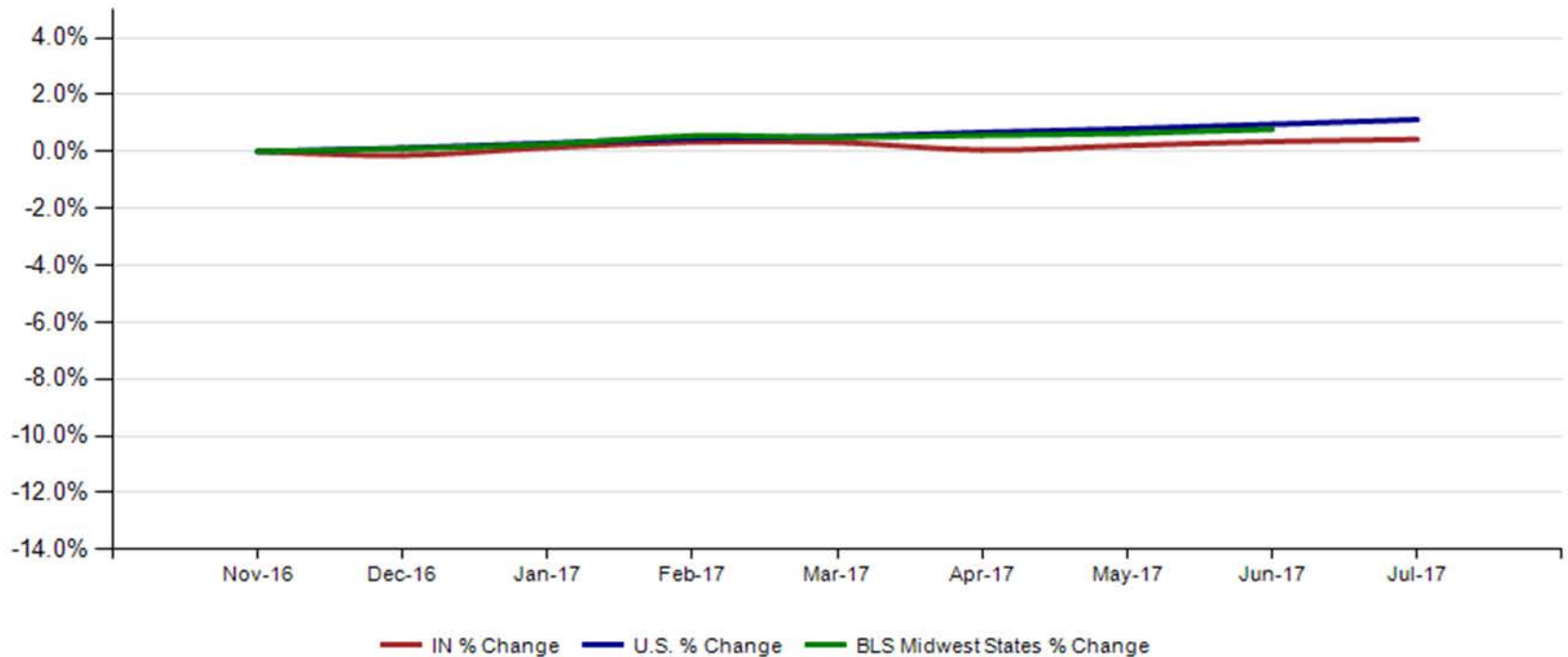
Private Sector Job Growth Since the Low Point of Employment in Indiana





Since Indiana's high point of employment (November 2016), private sector employment growth in Indiana has lagged the U.S. (0.4% growth vs. 1.1% nationally).

Private Sector Job Growth Since the Peak of Employment in Indiana



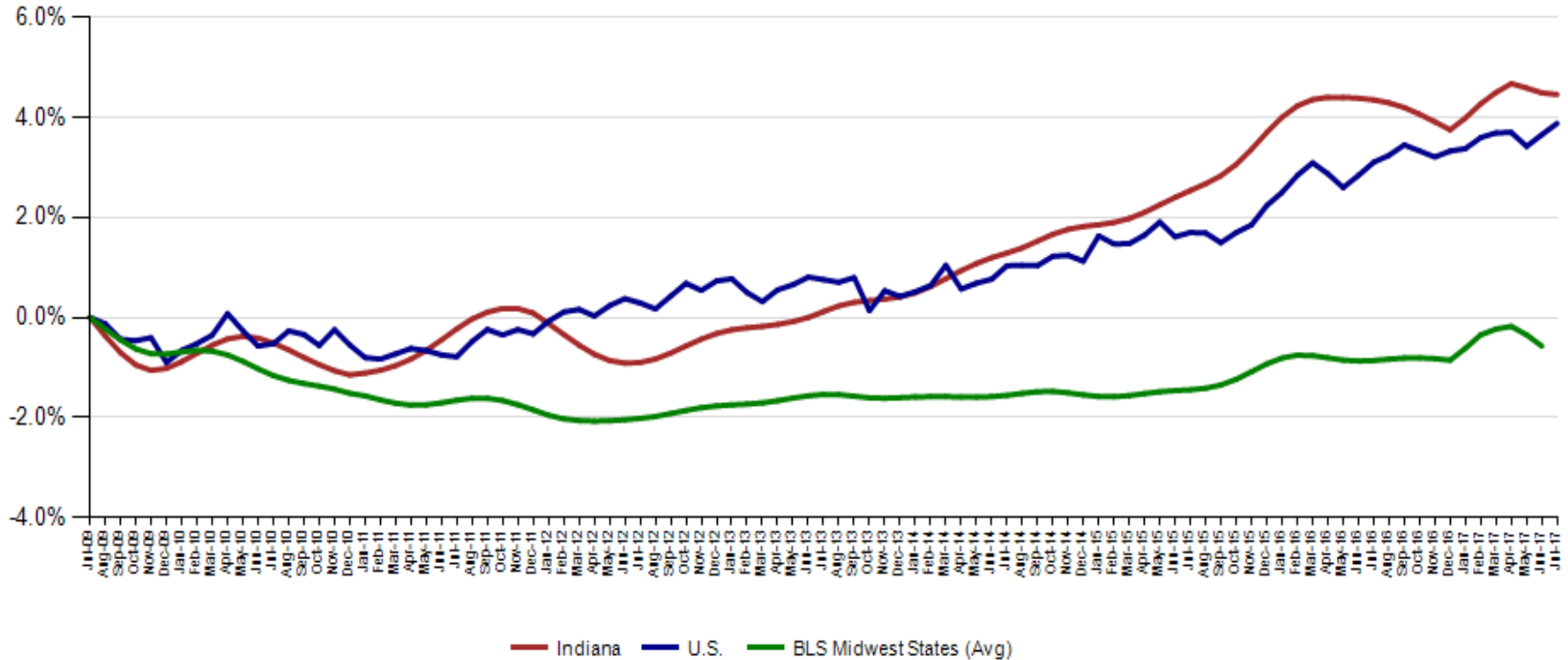


CES June Total Non Farm preliminary estimates were revised down by 3,500 jobs. Private employment was revised down by 6,300. The change from May to June is now an increase of 7,500 in Total Non-Farm and an increase of 3,800 in private employment.

Revisions to June 2017 Estimates						
INDUSTRY TITLE	May	Jun Prel	Jun Rev	Revision	Chg from May	Prel Chg from May
Total Nonfarm	3110.6	3121.6	3118.1	-3.5	7.5	11.0
Total Private	2682.5	2692.6	2686.3	-6.3	3.8	10.1
Goods Producing	669	668.6	671.1	2.5	2.1	-0.4
Service-Providing	2441.6	2453.0	2447.0	-6.0	5.4	11.4
Private Service Providing	2013.5	2024.0	2015.2	-8.8	1.7	10.5
Construction	136.6	135.7	137.7	2.0	1.1	-0.9
Manufacturing	525.8	526.5	527.0	0.5	1.2	0.7
Trade, Transportation, and Utilities	593.9	592.2	590.7	-1.5	-3.2	-1.7
Wholesale Trade	120.0	119.3	119.1	-0.2	-0.9	-0.7
Retail Trade	334.3	333.1	332.4	-0.7	-1.9	-1.2
Transportation, Warehousing, and Utilities	139.6	139.8	139.2	-0.6	-0.4	0.2
Information	30.7	30.9	30.4	-0.5	-0.3	0.2
Financial Activities	138.2	139.3	139.2	-0.1	1.0	1.1
Finance and Insurance	102.3	103.0	102.9	-0.1	0.6	0.7
Real Estate and Rental and Leasing	35.9	36.3	36.3	0.0	0.4	0.4
Professional and Business Services	339.0	342.5	342.7	0.2	3.7	3.5
Professional, Scientific, and Technical Services	116.4	118.3	118.0	-0.3	1.6	1.9
Management of Companies and Enterprises	34.8	34.0	34.0	0.0	-0.8	-0.8
Admin & Support & Waste Mgmt & Remediation Services	187.8	190.2	190.7	0.5	2.9	2.4
Education and Health Services	475.2	478.2	474.6	-3.6	-0.6	3.0
Educational Services	74.2	74.8	71.0	-3.8	-3.2	0.6
Health Care and Social Assistance	401.0	403.4	403.6	0.2	2.6	2.4
Leisure and Hospitality	308.1	310.4	307.3	-3.1	-0.8	2.3
Other Services	128.4	130.5	130.3	-0.2	1.9	2.1
Government	428.1	429.0	431.8	2.8	3.7	0.9

Indiana's July seasonally adjusted labor force is now at 3,330,694 and the number of employed is at 3,226,601. An estimated 104,093 individuals are currently unemployed and seeking employment.

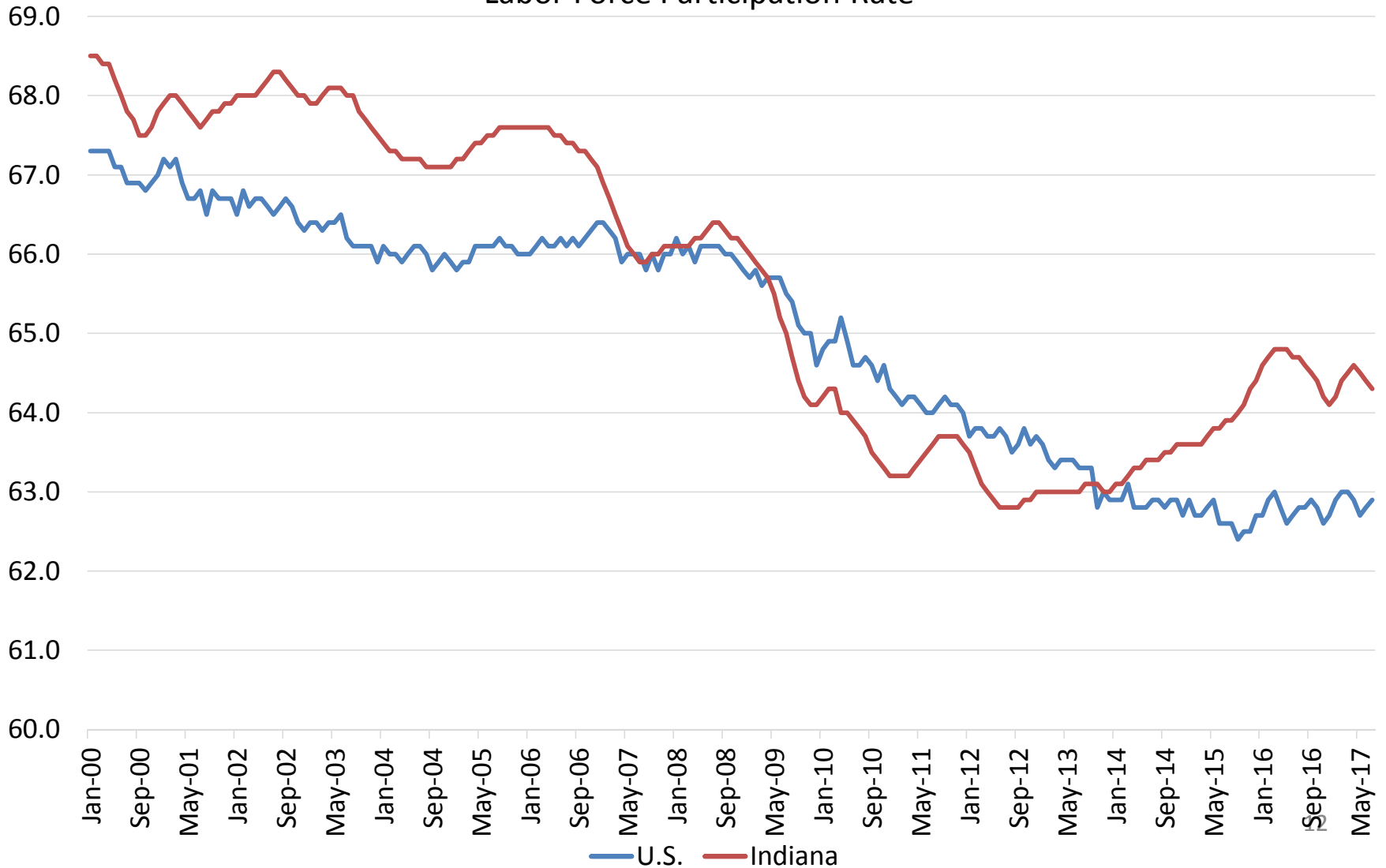
Labor Force Change Since July 2009 Indiana Trough (seasonally adjusted)



The July Indiana labor force participation rate is now 64.3% and the U.S. Rate is now at 62.9%



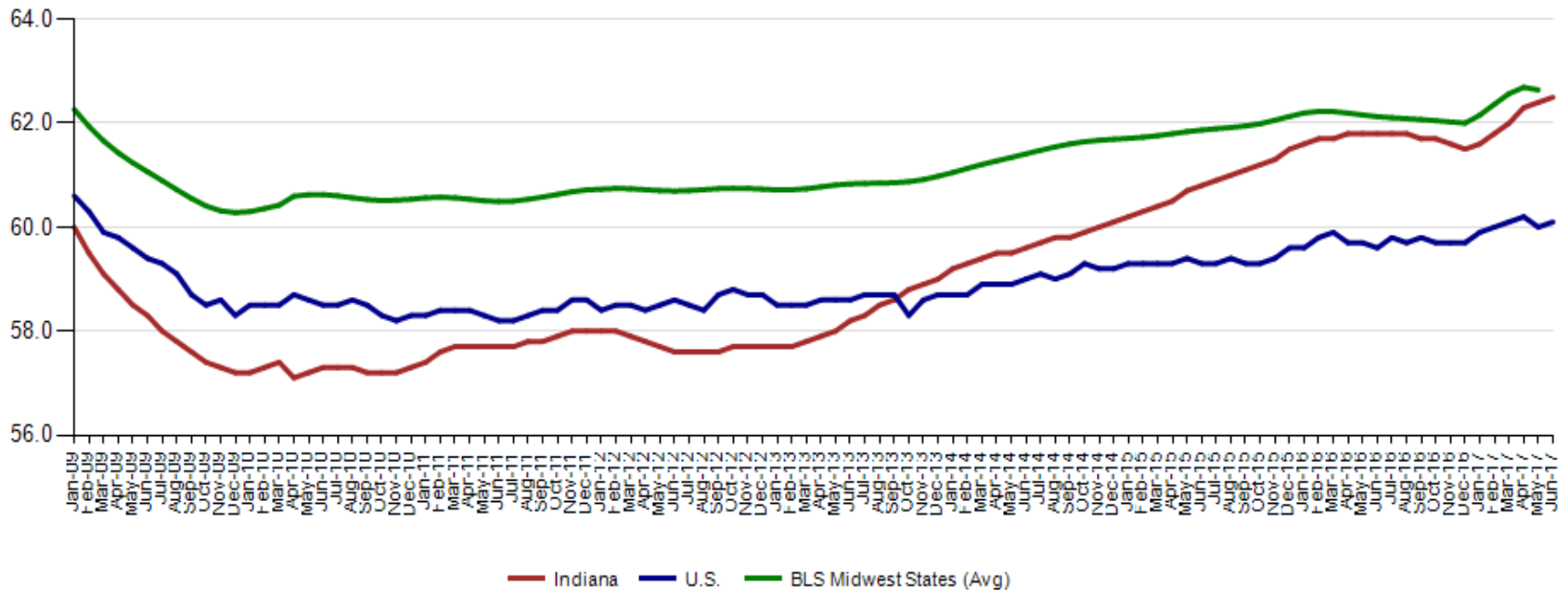
Labor Force Participation Rate





Indiana's employment to population July 2017 rate is 62.3%. The July U.S. employment to population rate is 60.2% The BLS Midwest Regional States held at 62.5% (June 2017).

Employment to Population Ratio (seasonally adjusted)



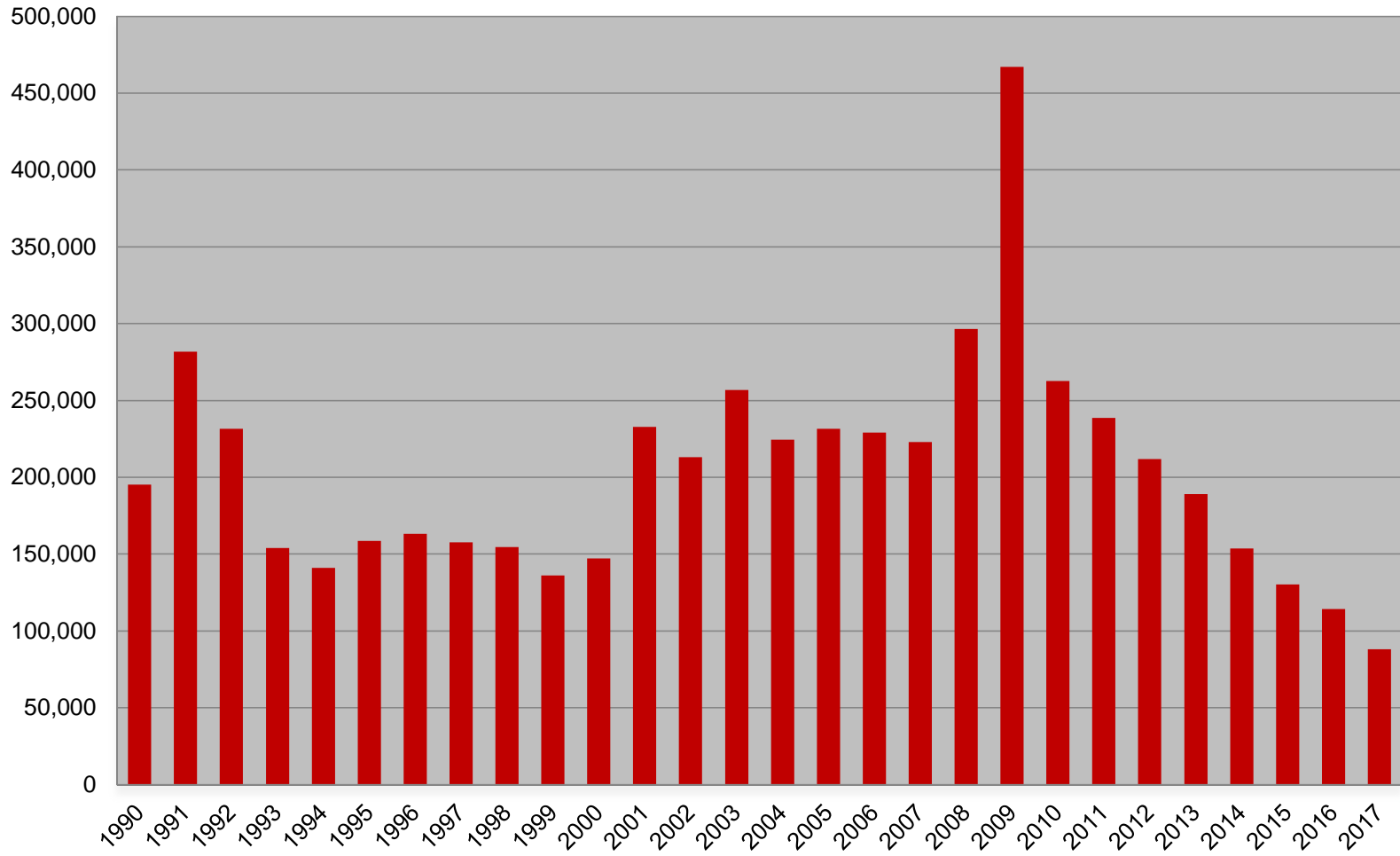


Midwest Comparison Rates: Seasonally Adjusted Over the Year and Over the Month (**confidential and preliminary**)

	July 2016	June 2017	July 2017	Monthly change	Yearly change
Indiana	4.5%	3.0%	3.1%	0.1%	-1.4%
U.S.	4.9%	4.4%	4.3%	-0.1%	-0.6%
Illinois	5.8%	4.7%		-4.7%	-5.8%
Kentucky	5.0%	5.1%		-5.1%	-5.0%
Michigan	4.9%	3.8%	3.7%	-0.1%	-1.2%
Minnesota	3.9%	3.7%		-3.7%	-3.9%
Ohio	4.9%	5.0%	5.2%	0.2%	0.3%
Wisconsin	4.2%	3.1%	3.2%	0.1%	-1.0%



Weekly Initial Claims – Week 31





Regular UI Claims – Reference Week (12th of the month) Input to LAUS Unemployment Rate Model Declines over the month - and over the year

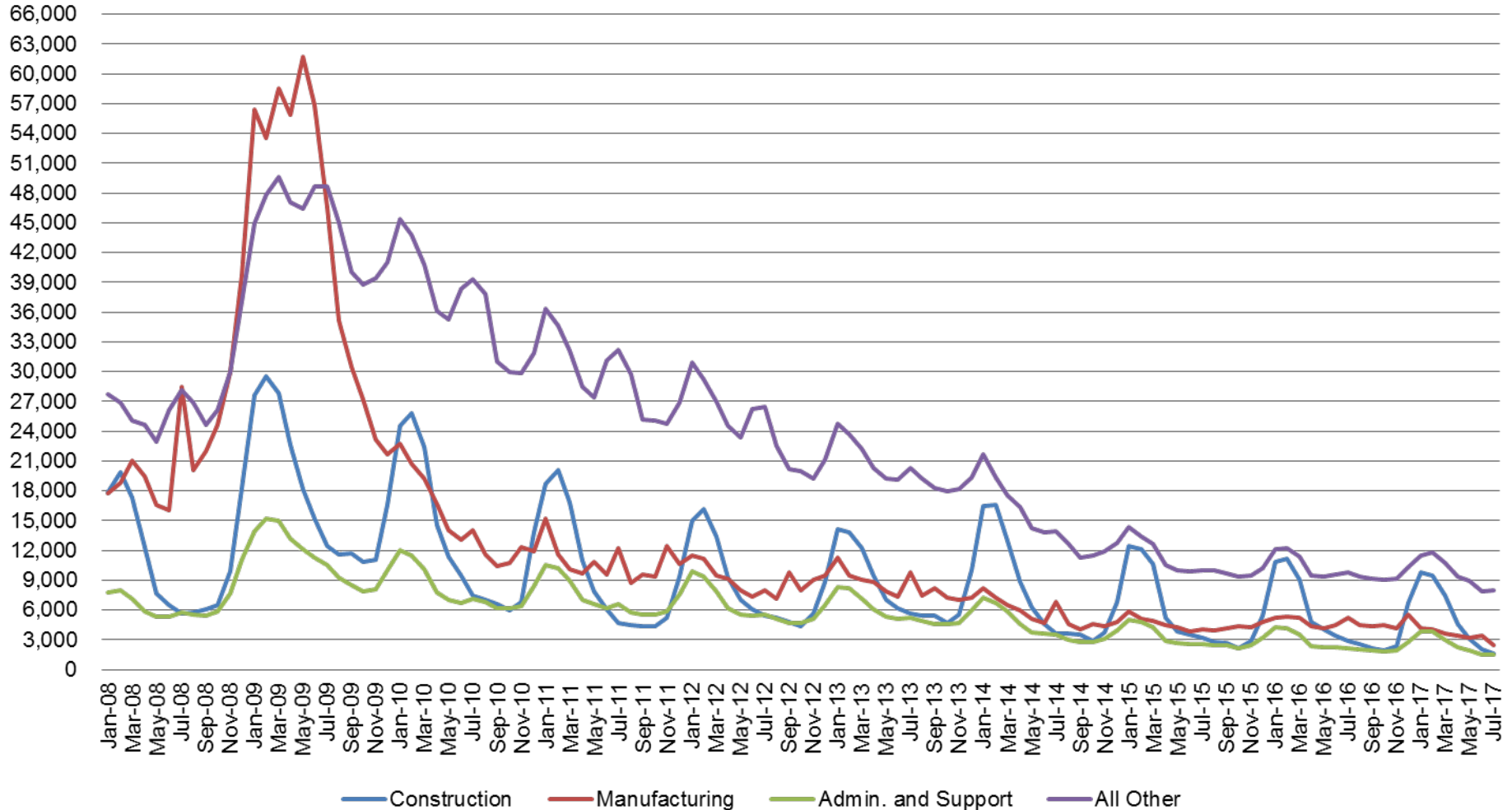
Without earnings – Reference week claims

	2006	2007	2008	2009	2010	2011	2012	2013	2014	2015	2016	2017	OTM Change	OTY Change
JANUARY	65,898	71,296	75,294	150,888	105,910	84,706	71,042	63,223	49,377	41,333	36,555	33,137	8,538	(3,418)
FEBRUARY	67,347	75,432	78,068	154,388	103,432	80,852	69,570	60,183	52,316	39,282	36,909	32,463	(674)	(4,446)
MARCH	59,716	64,936	74,759	157,257	93,469	71,696	60,752	54,578	45,928	35,755	32,439	32,141	(322)	(298)
APRIL	48,103	53,325	64,948	143,842	74,481	59,036	51,652	48,548	39,717	25,597	23,895	21,998	(10,143)	(1,897)
MAY	46,779	46,002	55,480	141,174	66,779	54,680	46,328	42,997	32,460	22,807	22,300	19,431	(2,567)	(2,869)
JUNE	45,533	46,350	57,228	136,670	67,996	55,021	46,820	41,722	29,524	22,030	22,025	16,722	(2,709)	(5,303)
JULY	53,424	51,141	72,032	121,336	69,447	58,031	47,268	44,597	30,845	22,341	22,326	15,599	(1,123)	(6,727)
AUGUST	45,021	43,887	61,985	103,509	62,976	51,710	42,134	39,998	26,061	21,472	20,737			
SEPTEMBER	41,247	42,500	61,548	92,680	58,280	46,824	41,955	39,563	23,685	20,941	19,372			
OCTOBER	42,487	42,313	67,306	86,275	58,317	46,909	39,467	37,778	23,768	19,917	19,143			
NOVEMBER	43,868	45,362	81,466	82,451	58,846	51,201	41,018	38,517	25,315	21,199	19,547			
DECEMBER	53,566	54,201	109,651	91,814	65,279	55,104	46,371	42,484	30,982	26,249	24,599			



Regular UI Claims by Industry

For the Reference Week of Each Month



Source: ETA 203



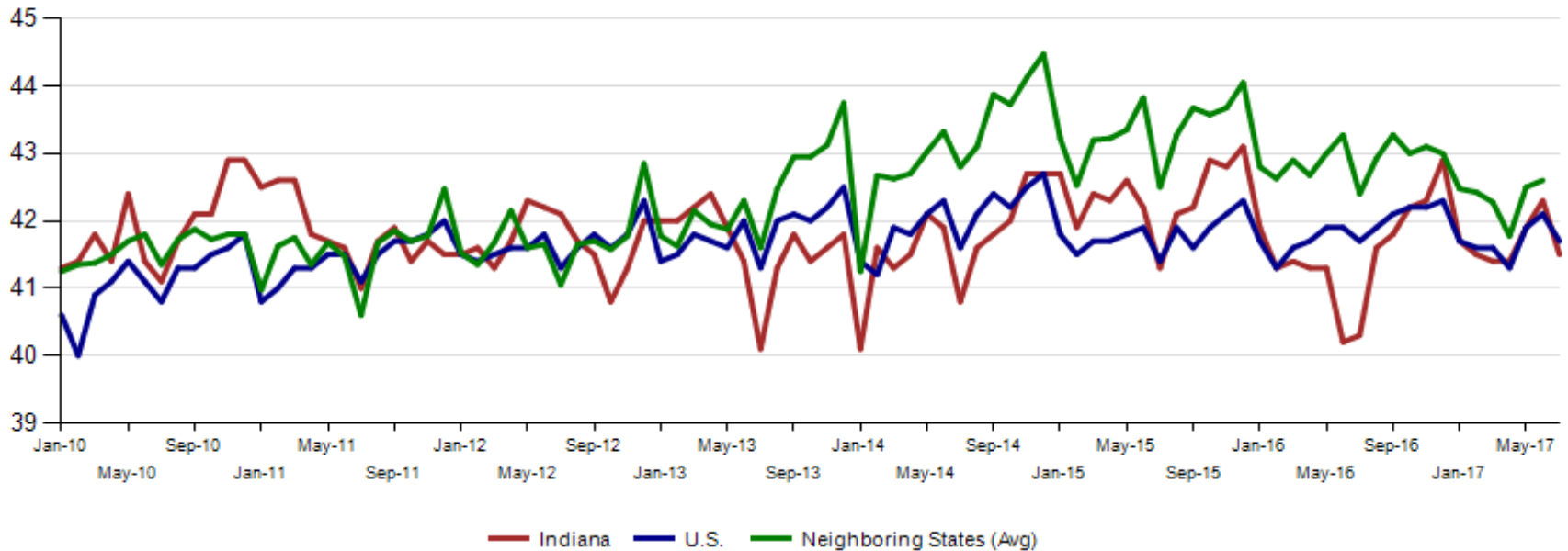
Internal and external Indiana Career Connect job orders are 58,092 in July. Health Care & Social Services, Administrative & Support & Waste Management & Remediation Services (this includes temp help services) top the list and Retail Trade.

NAICS title	Jul-2017	Prior Year			Current Year			Change over Prior Year			Current Year Including External			Current Duration (days)
		May	June	July	May	June	July	May	June	July	May	June	July	July
Total		8,882	9,511	10,144	10,417	10,607	9,200	17%	12%	-9%	50,718	67,465	58,092	55
Health Care and Social Services		1,706	2,182	2,353	1,953	2,270	2,292	14%	4%	-3%	10,101	13,544	10,812	40
Admin. & Support & Waste Mgt. & Rem. Services		1,233	1,193	1,032	1,185	989	1,131	-4%	-17%	10%	6,619	7,655	7,677	58
Retail Trade		802	826	835	704	704	760	-12%	-15%	-9%	6,754	7,844	7,328	42
Management of Companies and Enterprises		15	21	20	17	13	17	13%	-38%	-15%	555	4,083	4,802	104
Manufacturing		1,570	1,666	1,647	1,757	1,852	1,564	12%	11%	-5%	3,908	4,825	4,061	59
Accommodation and Food Services		364	260	619	873	1,276	305	140%	391%	-51%	3,435	5,590	3,745	44
Finance and Insurance		242	196	249	225	206	253	-7%	5%	2%	2,368	3,410	3,427	83
Professional, Scientific, and Technical Services		641	593	681	780	716	714	22%	21%	5%	3,207	3,104	2,985	75
Transportation & Warehousing		444	448	511	439	406	354	-1%	-9%	-31%	2,280	4,865	2,961	73
Educational Services		434	644	752	834	711	319	92%	10%	-58%	3,802	3,871	2,781	30
Public Administration		208	181	143	253	206	167	22%	14%	17%	1,793	2,346	2,221	99
Wholesale Trade		361	412	377	449	410	482	24%	0%	28%	1,880	2,270	2,016	37
Other Services(Except Public Administration)		199	160	170	203	186	170	2%	16%	0%	730	1,051	948	142
Information		253	310	383	224	210	231	-11%	-32%	-40%	1,159	965	718	39
Real Estate and Rental and Leasing		107	99	107	121	133	148	13%	34%	38%	857	794	703	58
Construction		171	165	124	219	173	146	28%	5%	18%	689	762	396	89
Utilities		72	78	72	111	87	88	54%	12%	22%	261	260	268	43
Arts, Entertainment, and Recreation		13	18	25	16	26	27	23%	44%	8%	172	146	176	46
Agriculture, Forestry, Fishing and Hunting		31	17	15	45	20	18	45%	18%	20%	87	48	45	111
Mining		6	25	20	5	9	10	-17%	-64%	-50%	57	28	18	35
Unallocated		10	17	9	4	4	4	-60%	-76%	-56%	4	4	4	151



July 2017 average weekly hours for Indiana manufacturing production decreased by 0.8 to 41.5. Indiana trails the national manufacturing weekly hours of 41.7. Neighboring states were at 42.6 hours (June data).

Avg. Weekly Manufacturing Production Hours (non seasonally adjusted)





IN Metropolitan Area Employment Estimates

MSA	July 2000	July 2016	June 2017	July 2017	July 2017 Change	Change since 2000	% Chg since 2000	Annual Change	Annual % Change
Elkhart-Goshen	127,000	130,100	138,600	137,500	-1,100	10,500	8.3%	7,400	5.7%
Columbus	44,100	51,500	54,800	53,900	-900	9,800	22.2%	2,400	4.7%
Kokomo	49,800	41,300	42,500	42,600	100	-7,200	-14.5%	1,300	3.1%
Evansville	160,800	157,300	161,300	160,500	-800	-300	-0.2%	3,200	2.0%
Fort Wayne	214,000	217,000	224,200	221,400	-2,800	7,400	3.5%	4,400	2.0%
Indianapolis-Carmel-Anderson	890,500	1,041,000	1,070,100	1,061,000	-9,100	170,500	19.1%	20,000	1.9%
Lafayette-West Lafayette	88,600	98,100	101,300	99,600	-1,700	11,000	12.4%	1,500	1.5%
South Bend	148,800	136,500	140,600	138,200	-2,400	-10,600	-7.1%	1,700	1.2%
Terre Haute	75,900	69,100	71,000	69,500	-1,500	-6,400	-8.4%	400	0.6%
Gary Division	278,300	273,300	281,400	274,200	-7,200	-4,100	-1.5%	900	0.3%
Muncie	55,800	49,700	50,900	49,800	-1,100	-6,000	-10.8%	100	0.2%
Bloomington	68,600	70,900	72,200	70,600	-1,600	2,000	2.9%	-300	-0.4%
Michigan City	49,200	41,700	41,600	40,500	-1,100	-8,700	-17.7%	-1,200	-2.9%