



INDIANA
DEPARTMENT OF
WORKFORCE
DEVELOPMENT

Indiana's Employment and Labor Force Estimates January 2018

03/12/2018

Key Points

- **Indiana's unemployment rate decreased 0.1% over the month to 3.3% in January 2018.** The U.S. rate is 4.1%.
- Indiana's rate has decreased 0.5 percentage points over the year from January 2017.
- Indiana's Labor Force decreased over the month by 7,294; due to a decrease in residence employment of 3,189 and a decrease in unemployment of 4,105.
- Indiana's Labor Force has decreased 4,280 over the year.
- Indiana's Labor Force Participation Rate decreased 0.2 percentage points over the month and is currently 63.7%. This remains above the U.S. Labor Force Participation rate which stands at 62.7%.

Key Points

- Indiana's total private employment increased by 3,000 over the month and had gains of 24,400 over the year.
- Indiana private employment now stands at 2,691,900.
- Construction gained 2,400 jobs over the month.
- Leisure and Hospitality gained 1,700 jobs.
- Trade, Transportation and Utilities gained 1,400 jobs
- Manufacturing gained 200 jobs.
- Professional and Business Services lost 700 jobs
- All Other lost 1,500 jobs (Includes Mining and Logging, Information, and Other Services)

Employed persons (Current Population Survey)

Persons 16 years and over in the civilian noninstitutional population who, during the reference week, (a) did any work at all (at least 1 hour) as paid employees; worked in their own business, profession, or on their own farm, or worked 15 hours or more as unpaid workers in an enterprise operated by a member of the family; and (b) all those who were not working but who had jobs or businesses from which they were temporarily absent because of vacation, illness, bad weather, childcare problems, maternity or paternity leave, labor-management dispute, job training, or other family or personal reasons, whether or not they were paid for the time off or were seeking other jobs. Each employed person is counted only once, even if he or she holds more than one job. Excluded are persons whose only activity consisted of work around their own house (painting, repairing, or own home housework) or volunteer work for religious, charitable, and other organizations.

Unemployed persons (Current Population Survey)

Persons aged 16 years and older who had no employment during the reference week, were available for work, except for temporary illness, and had made specific efforts to find employment sometime during the 4-week period ending with the reference week. Persons who were waiting to be recalled to a job from which they had been laid off need not have been looking for work to be classified as unemployed.

Marginally attached workers (Current Population Survey)

Persons not in the labor force who want and are available for work, and who have looked for a job sometime in the prior 12 months (or since the end of their last job if they held one within the past 12 months), but were not counted as unemployed because they had not searched for work in the 4 weeks preceding the survey. Discouraged workers are a subset of the marginally attached.

Discouraged workers (Current Population Survey)

Persons not in the labor force who want and are available for a job and who have looked for work sometime in the past 12 months (or since the end of their last job if they held one within the past 12 months), but who are not currently looking because they believe there are no jobs available or there are none for which they would qualify.

Current Employment Statistics (CES) Compared to Local Area Unemployment Statistics (LAUS)

LAUS (Labor Force by Residence)

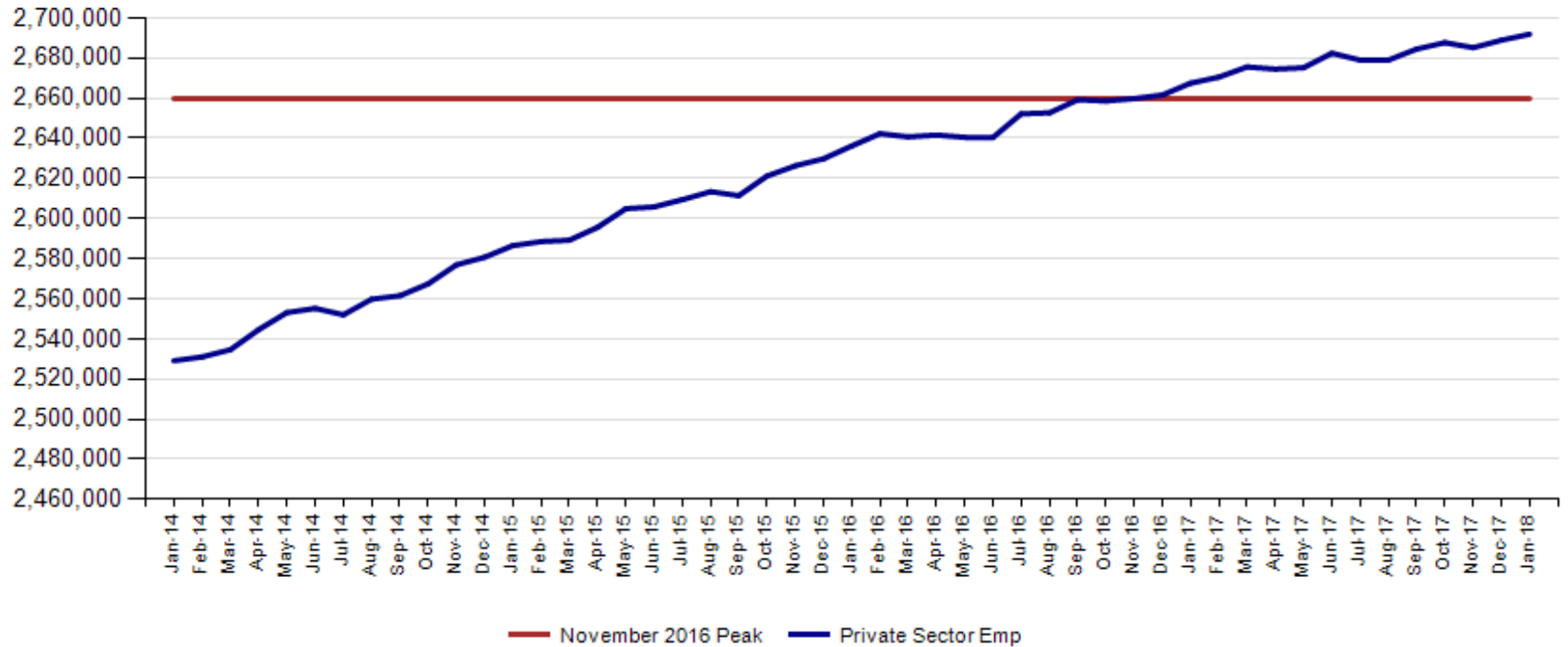
- An estimate of employment based on where the employee lives, rather than where they work
- This is a count of people not jobs
- Used in calculating the labor force

CES (Employment by Job)

- An estimate or count of employment based on the location of the job regardless of the worker's residence
- Also called nonag wage and salary or nonfarm employment
- This counts jobs, not people
- Used in Quarterly Census of Employment and Wages (QCEW) , Occupational Employment Statistics (OES) and CES data

January 2018 total private employment is 32,100 above the November 2016 peak.

Indiana Private Sector Employment





January 2018 Indiana private sector employment increased by 3,000 jobs over the month and is up 24,400 over the year. Construction grew by 2,400 jobs over the month and Leisure and Hospitality grew by 1,700.

IN Employment Change Over the Month, Year-to-Date and Over the Year (seasonally adjusted)

Industry	January 2017	December 2017	January 2018	Month Change	Y-to-D Change	Y-to-Y Change
Private Educational & Health Services	462.9	476.7	476.3	-0.4	-0.4	13.4
.....Private Educational Services	61.6	63.8	64.4	0.6	0.6	2.8
.....Health Care & Social Assistance	401.3	412.9	411.9	-1.0	-1.0	10.6
Manufacturing	527.6	532.7	532.9	0.2	0.2	5.3
Professional & Business Services	334.4	337.7	337.0	-0.7	-0.7	2.6
Financial Activities	134.9	135.8	135.7	-0.1	-0.1	0.8
Construction	136.5	138.7	141.1	2.4	2.4	4.6
Leisure and Hospitality	308.2	306.6	308.3	1.7	1.7	0.1
Trade, Transportation & Utilities	598.1	598.1	599.5	1.4	1.4	1.4
.....Trade	453.8	452.4	453.7	1.3	1.3	-0.1
.....Transportation, Warehousing & Utilities	144.3	145.7	145.8	0.1	0.1	1.5
All Other	164.9	162.6	161.1	-1.5	-1.5	-3.8
Total Private	2,667.5	2,688.9	2,691.9	3.0	3.0	24.4
Government (Includes Public Schools & Hospitals)	428.2	426.0	424.1	-1.9	-1.9	-4.1
Total Nonfarm	3,095.7	3,114.9	3,116.0	1.1	1.1	20.3
United States Total Private	123,383.0	125,286.0	125,482.0	196.0	196.0	2,099.0



January 2018 estimates show Indiana has gained 368,700 in Private jobs since the July 2009 trough. Manufacturing has accounted for 106,000 of those jobs.

IN Statewide Estimates (seasonally adjusted) -- January 2018

Supersector	Private Empl. Peak Nov 2016	Private Empl. Trough July 2009	December 2017	January 2018	Month to Month Change	Change Since Peak	Change Since Trough	% Month to Month Change
Private Educational & Health Services	462.0	411.1	476.7	476.3	-0.4	14.3	65.2	-0.1%
.....Private Educational Services	61.5	63.3	63.8	64.4	0.6	2.9	1.1	0.9%
.....Health Care & Social Assistance	400.5	347.8	412.9	411.9	-1.0	11.4	64.1	-0.2%
Manufacturing	525.1	426.9	532.7	532.9	0.2	7.8	106.0	0.0%
Professional & Business Services	334.6	256.9	337.7	337.0	-0.7	2.4	80.1	-0.2%
Financial Activities	134.8	130.7	135.8	135.7	-0.1	0.9	5.0	-0.1%
Construction	134.5	116.5	138.7	141.1	2.4	6.6	24.6	1.7%
Leisure and Hospitality	308.1	276.8	306.6	308.3	1.7	0.2	31.5	0.6%
Trade, Transportation & Utilities	596.0	545.7	598.1	599.5	1.4	3.5	53.8	0.2%
.....Trade	451.2	421.6	452.4	453.7	1.3	2.5	32.1	0.3%
.....Transportation, Warehousing & Utilities	144.8	124.1	145.7	145.8	0.1	1.0	21.7	0.1%
All Other	164.7	158.6	162.6	161.1	-1.5	-3.6	2.5	-0.9%
Total Private	2,659.8	2,323.2	2,688.9	2,691.9	3.0	32.1	368.7	0.1%
Government (Includes Public Schools & Hospitals)	426.4	434.5	426.0	424.1	-1.9	-2.3	-10.4	-0.4%
Total Nonfarm	3,086.2	2,757.7	3,114.9	3,116.0	1.1	29.8	358.3	0.0%
United States Total Private	122,959.0	108,159.0	125,286.0	125,482.0	196.0	2,523.0	17,323.0	0.2%



January Indiana private sector job growth over the month grew by 0.1% while the national trend grew at 0.2%. Indiana Construction is growing faster than the U.S. over the month and over the year.

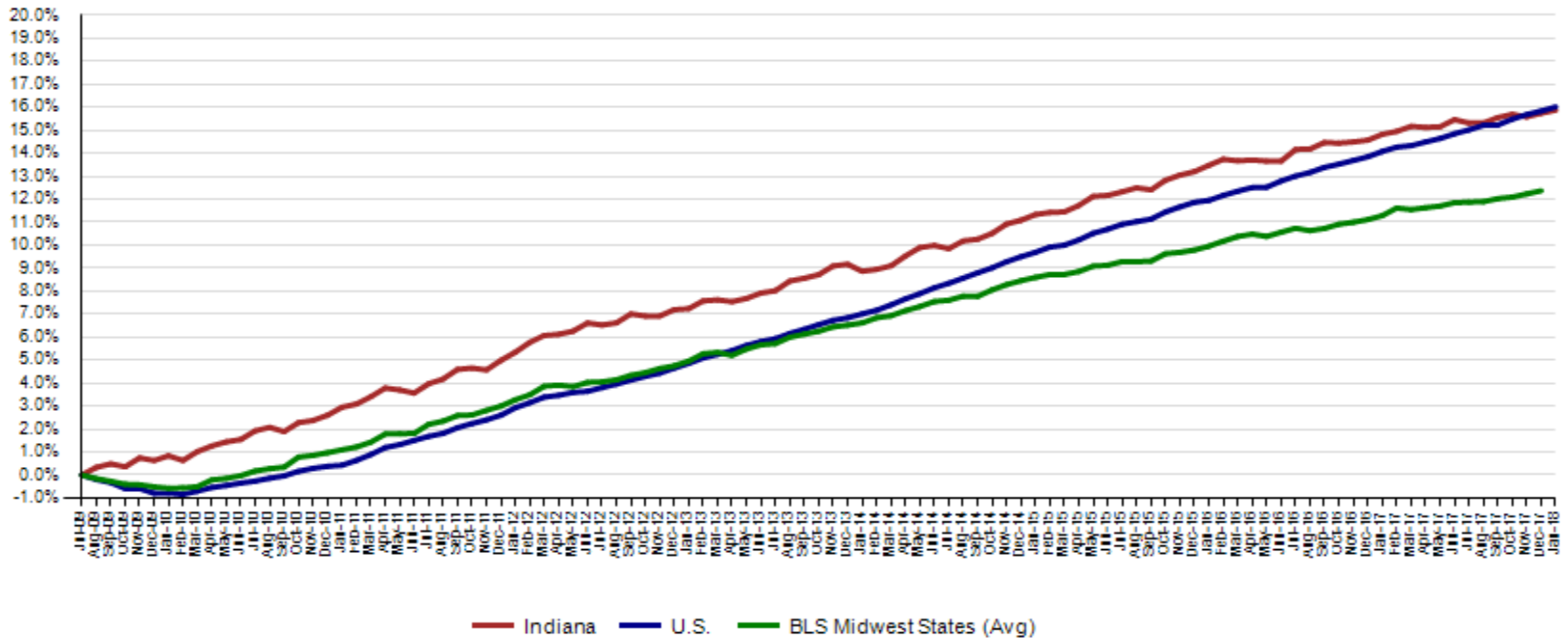
IN Employment Change Compared to the U.S.

Industry	Indiana Month to Month	U.S. Month to Month	Indiana vs U.S. Change	Indiana Year-to-Date	U.S. Year-to-Date	Indiana vs U.S. Change	Indiana Year-to-Year	U.S. Year-to-Year	Indiana vs U.S. Change
Private Educational & Health Services	-0.1%	0.2%	UNDER	-0.1%	0.2%	UNDER	2.9%	2.0%	OVER
.....Private Educational Services	0.9%	0.3%	OVER	0.9%	0.3%	OVER	4.5%	2.4%	OVER
.....Health Care & Social Assistance	-0.2%	0.1%	UNDER	-0.2%	0.1%	UNDER	2.6%	2.0%	OVER
Manufacturing	0.0%	0.1%	UNDER	0.0%	0.1%	UNDER	1.0%	1.5%	UNDER
Professional & Business Services	-0.2%	0.1%	UNDER	-0.2%	0.1%	UNDER	0.8%	2.2%	UNDER
Financial Activities	-0.1%	0.1%	UNDER	-0.1%	0.1%	UNDER	0.6%	1.4%	UNDER
Construction	1.7%	0.5%	OVER	1.7%	0.5%	OVER	3.4%	3.3%	OVER
Leisure and Hospitality	0.6%	0.2%	OVER	0.6%	0.2%	OVER	0.0%	2.2%	UNDER
Trade, Transportation & Utilities	0.2%	0.1%	OVER	0.2%	0.1%	OVER	0.2%	0.7%	UNDER
.....Trade	0.3%	0.1%	OVER	0.3%	0.1%	OVER	0.0%	0.2%	UNDER
.....Transportation, Warehousing & Utils	0.1%	0.2%	UNDER	0.1%	0.2%	UNDER	1.0%	2.6%	UNDER
All Other	-0.9%	0.1%	UNDER	-0.9%	0.1%	UNDER	-2.3%	1.3%	UNDER
Total Private	0.1%	0.2%	UNDER	0.1%	0.2%	UNDER	0.9%	1.7%	UNDER
Government (Includes Public Schools & Hospitals)	-0.4%	0.0%	UNDER	-0.4%	0.0%	UNDER	-1.0%	0.1%	UNDER
Total Nonfarm	0.0%	0.1%	UNDER	0.0%	0.1%	UNDER	0.7%	1.5%	UNDER

Source: Current Employment Statistics, seasonally adjusted

Since the low point of employment in July 2009, private sector employment growth in Indiana has been passed by the U.S. growth rate. Indiana is now at 15.9% while the U.S. is at 16.0% through January 2018. BLS Region state growth was at 12.4% through December 2017.

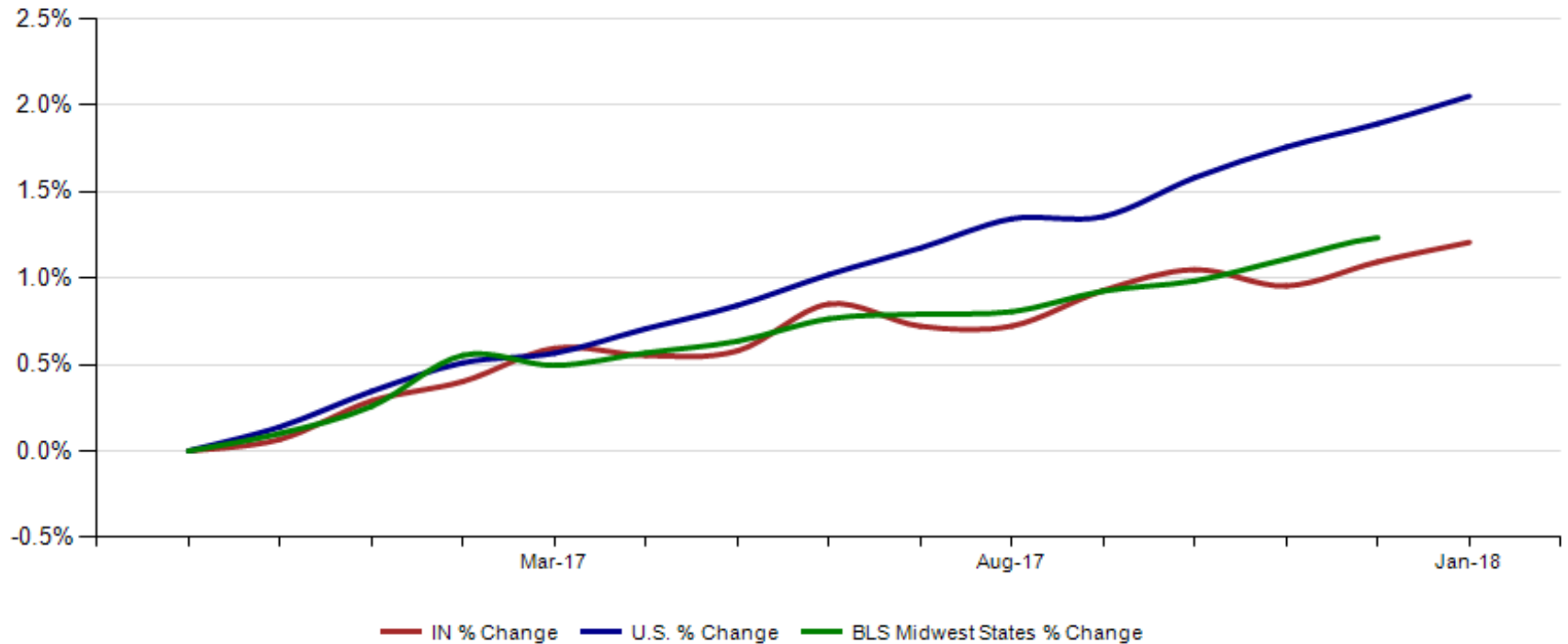
Private Sector Job Growth Since the Low Point of Employment in Indiana





Since Indiana's high point of employment (November 2016), private sector employment growth in Indiana has lagged the U.S. (1.2% growth vs. 2.1% nationally).

Private Sector Job Growth Since the Peak of Employment in Indiana



CES December Total Non Farm preliminary estimates were revised down 21,300 jobs. Private employment was revised down by 8,800. The change from November to December is now a decrease of 15,600 in Total Non-Farm and a decrease of 2,800 in private employment.



Revisions to December 2017 Estimates

INDUSTRY TITLE	Nov	Dec Pre	Dec Rev	Revision	Chg from Nov	Pre Chg from Nov
Total Nonfarm	3130.5	3136.2	3114.9	-21.3	-15.6	5.7
Total Private	2691.7	2697.7	2688.9	-8.8	-2.8	6.0
Goods Producing	675.1	680.6	677.4	-3.2	2.3	5.5
Service-Providing	2455.4	2455.6	2437.5	-18.1	-17.9	0.2
Private Service Providing	2016.6	2017.1	2011.5	-5.6	-5.1	0.5
Construction	139	139.7	138.7	-1.0	-0.3	0.7
Manufacturing	529.8	534.5	532.7	-1.8	2.9	4.7
Trade, Transportation, and Utilities	595.9	596.8	598.1	1.3	2.2	0.9
Wholesale Trade	118.9	120.0	119.8	-0.2	0.9	1.1
Retail Trade	337.1	334.5	332.6	-1.9	-4.5	-2.6
Transportation, Warehousing, and Utilities	139.9	142.3	145.7	3.4	5.8	2.4
Information	29.8	30.1	30.3	0.2	0.5	0.3
Financial Activities	139.8	137.9	135.8	-2.1	-4.0	-1.9
Finance and Insurance	103.9	102.8	99.6	-3.2	-4.3	-1.1
Real Estate and Rental and Leasing	35.9	35.1	36.2	1.1	0.3	-0.8
Professional and Business Services	339.3	335.2	337.7	2.5	-1.6	-4.1
Professional, Scientific, and Technical Services	116.8	116.1	113.9	-2.2	-2.9	-0.7
Management of Companies and Enterprises	35.2	35.3	34.7	-0.6	-0.5	0.1
Admin & Support & Waste Mgmt & Remediation Services	187.3	183.8	189.1	5.3	1.8	-3.5
Education and Health Services	475.3	478.8	476.7	-2.1	1.4	3.5
Educational Services	70.2	70.5	63.8	-6.7	-6.4	0.3
Health Care and Social Assistance	405.1	408.3	412.9	4.6	7.8	3.2
Leisure and Hospitality	306.4	307.7	306.6	-1.1	0.2	1.3
Other Services	130.1	130.6	126.3	-4.3	-3.8	0.5
Government	438.8	438.5	426.0	-12.5	-12.8	-0.3



Unemployment Rate Estimates for Indiana and United States January 2018 (2017 Benchmarked Data)

Seasonally Adjusted Rates

	Jan 2018	Dec 2017	Jan 2017
Indiana	3.3	3.4	3.8
US	4.1	4.1	4.8

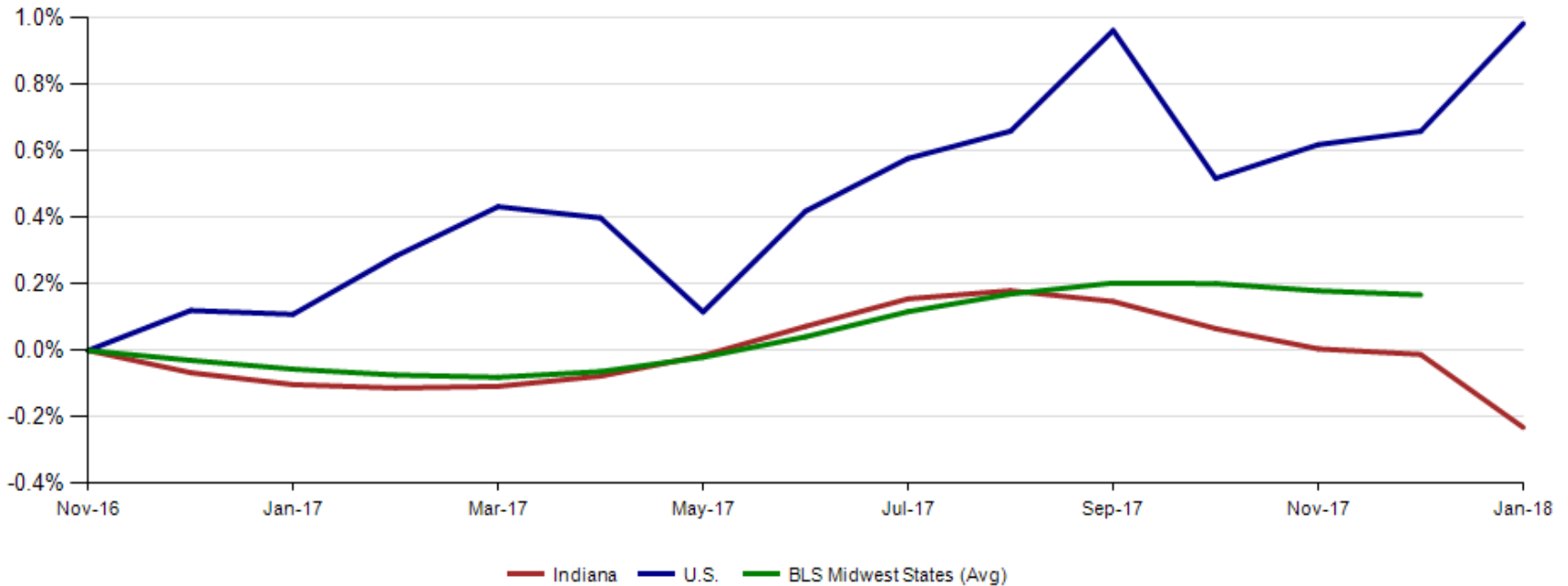
Non-Seasonally Adjusted Rates

	Jan 2018	Dec 2017	Jan 2017
Indiana	3.6	3.1	4.5
US	4.5	3.9	5.1



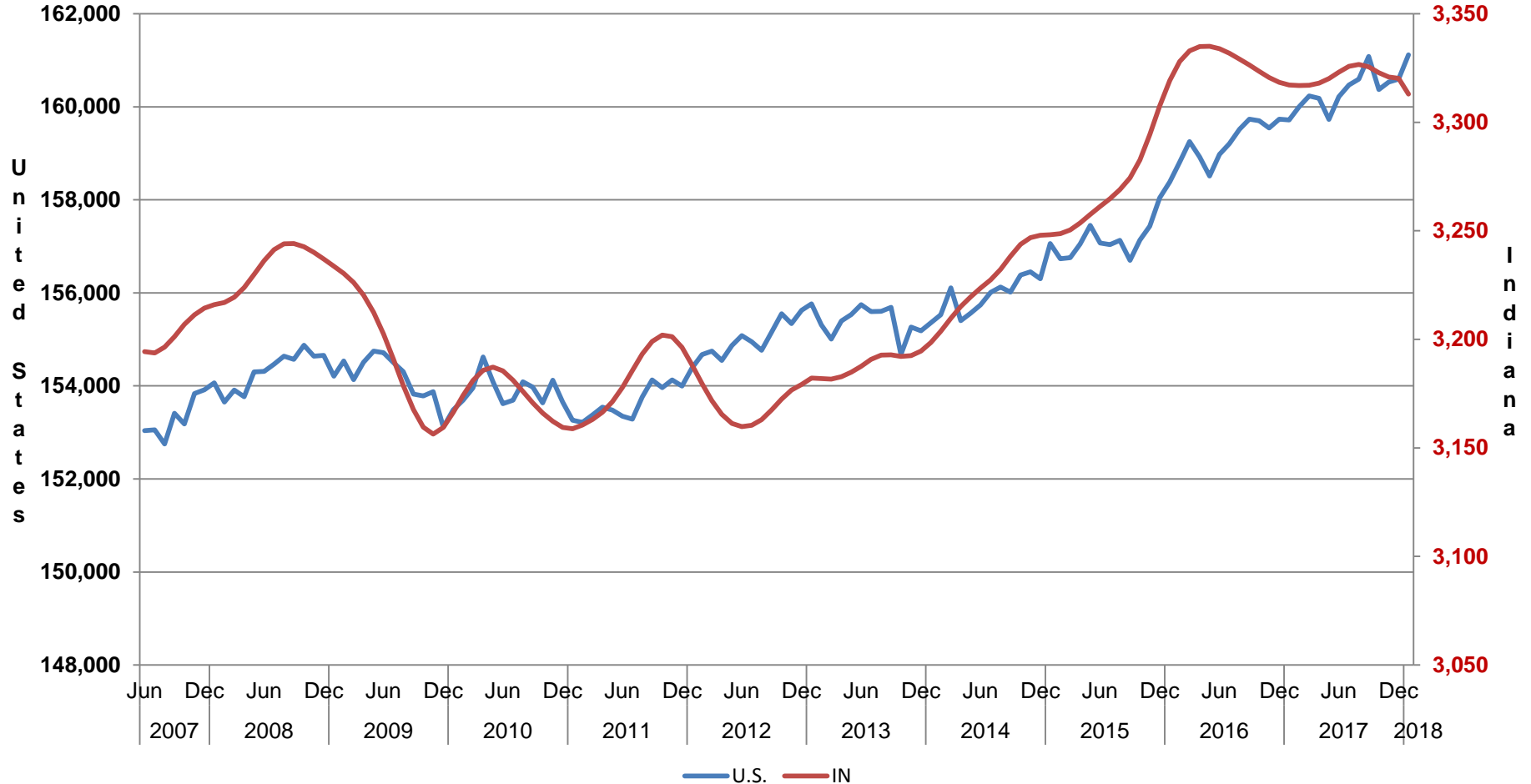
Indiana's January seasonally adjusted labor force is now at 3,312,966 down 7,294 from December. The number of employed is at 3,203,598 down 3,189 over the month. An estimated 109,368 individuals are currently unemployed and seeking employment.

Labor Force Change Since November 2016 Indiana Peak (seasonally adjusted)





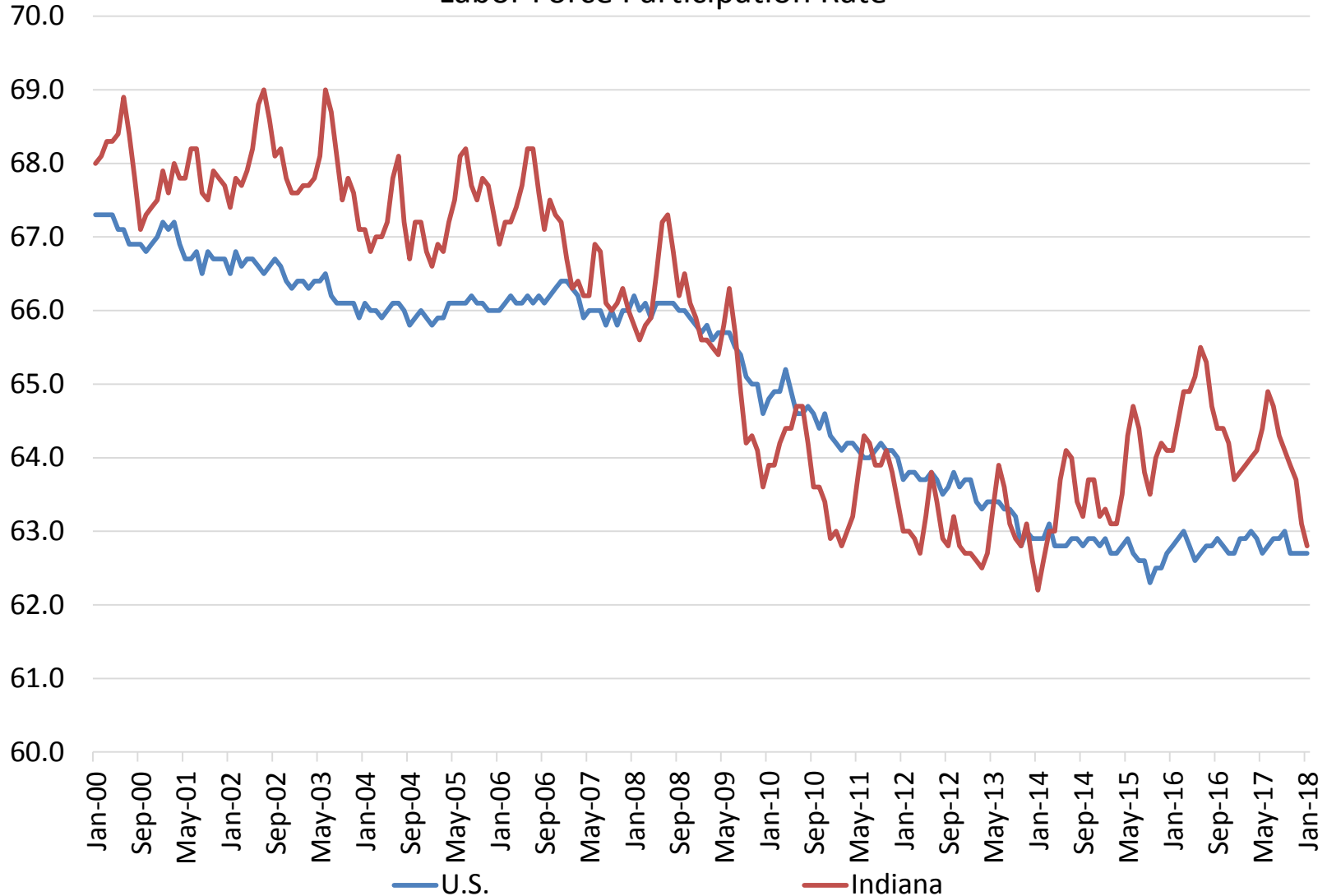
Indiana & U.S. Labor Force, 2007-2018 (in 1000s)





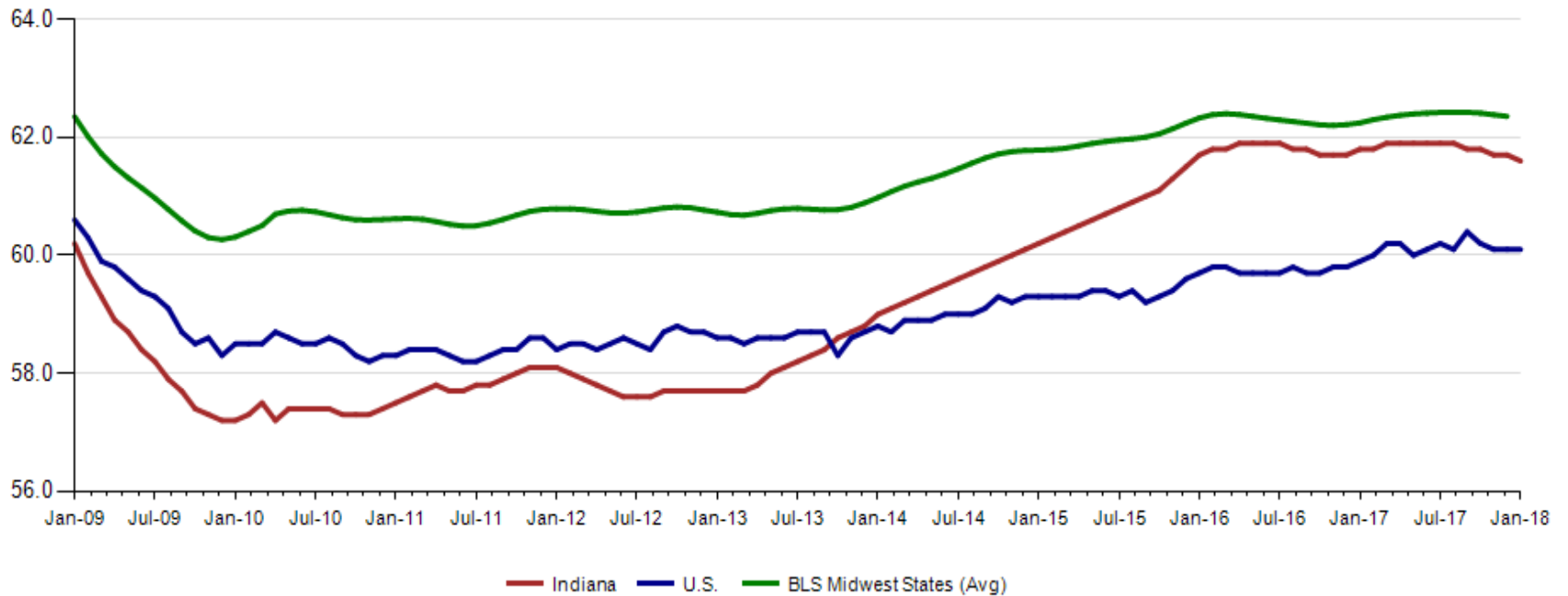
The January Indiana labor force participation rate decreased by 0.2% percentage points to 63.7% and the U.S. rate remains at 62.7%.

Labor Force Participation Rate



**Indiana's employment to population rate for January 2018 is 61.6%.
The January U.S. employment to population rate is 60.1%. The BLS
Midwest Regional states rate is 62.4% (December 2017).**

Employment to Population Ratio (seasonally adjusted)





Midwest Comparison Rates: Seasonally Adjusted Over the Year and Over the Month (confidential and preliminary)

	January 2017	December 2017	January 2018	Monthly change	Yearly change
Indiana	3.8%	3.4%	3.3%	-0.1%	-0.5%
U.S.	4.8%	4.1%	4.1%	0.0%	-0.7%
Illinois	5.2%	4.9%	4.8%	-0.1%	-0.4%
Kentucky	5.2%	4.5%	4.3%	-0.2%	-0.9%
Michigan	5.0%	4.7%	4.7%	0.0%	-0.3%
Minnesota	3.8%	3.3%	3.3%	0.0%	-0.5%
Ohio	5.2%	4.9%	4.7%	-0.2%	-0.5%
Wisconsin	3.5%	3.2%	3.1%	-0.1%	-0.4%

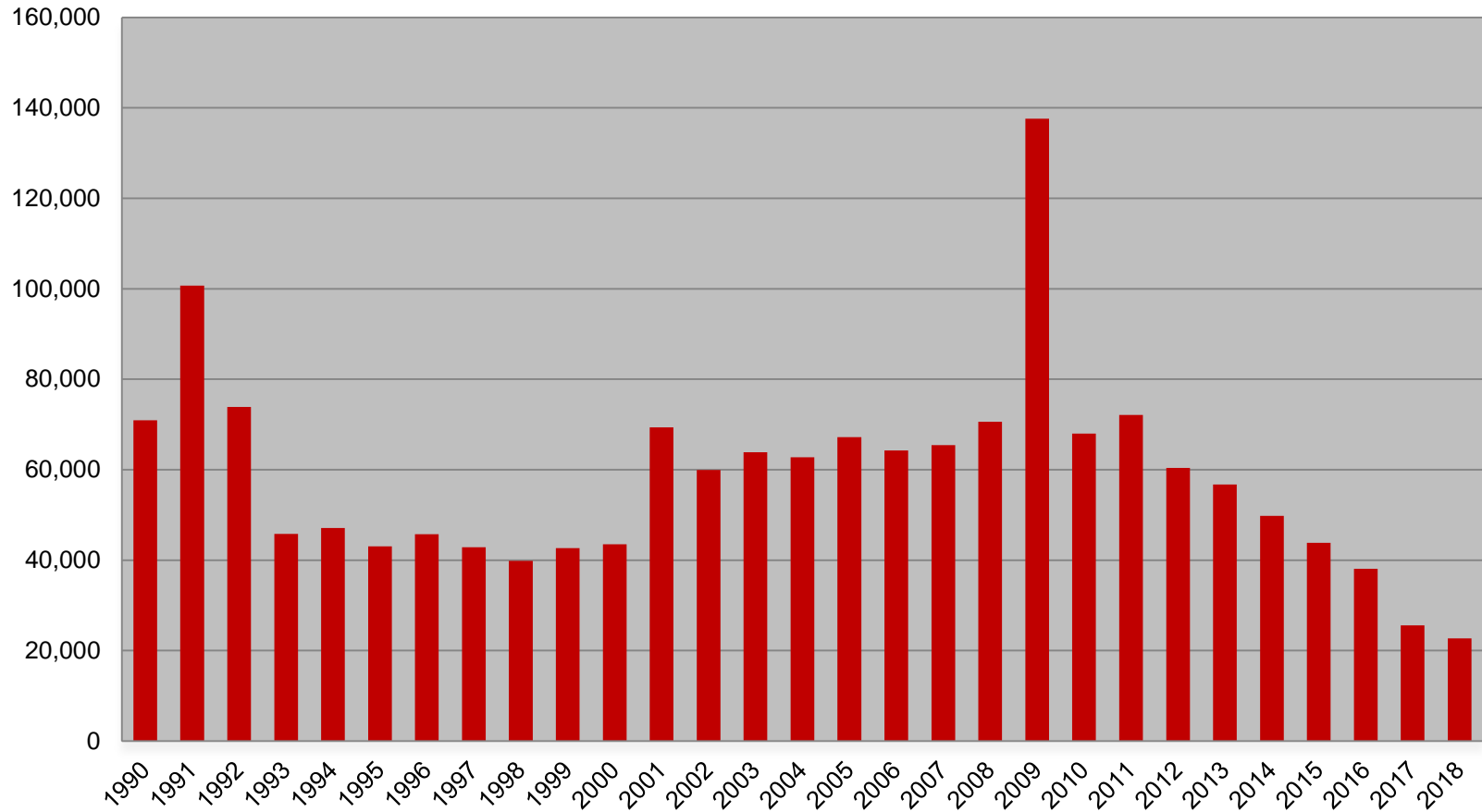
*2017 Benchmark

Confidential & Deliberative



Weekly Initial Claims – Week 7

Total aggregated UI claims for the first week of each year as reported to ETA.





Regular UI Claims – Reference Week (12th of the month) Input to LAUS Unemployment Rate Model Declines over the month - and over the year

Without earnings – Reference week claims

	2009	2010	2011	2012	2013	2014	2015	2016	2017	2018	OTM Change	OTY Change
JANUARY	150,888	105,910	84,706	71,042	63,223	49,377	41,333	36,555	33,137	24,910	7,565	(8,227)
FEBRUARY	154,388	103,432	80,852	69,570	60,183	52,316	39,282	36,909	32,463			
MARCH	157,257	93,469	71,696	60,752	54,578	45,928	35,755	32,439	32,141			
APRIL	143,842	74,481	59,036	51,652	48,548	39,717	25,597	23,895	21,998			
MAY	141,174	66,779	54,680	46,328	42,997	32,460	22,807	22,300	19,431			
JUNE	136,670	67,996	55,021	46,820	41,722	29,524	22,030	22,025	16,722			
JULY	121,336	69,447	58,031	47,268	44,597	30,845	22,341	22,326	15,775			
AUGUST	103,509	62,976	51,710	42,134	39,998	26,061	21,472	20,737	15,692			
SEPTEMBER	92,680	58,280	46,824	41,955	39,563	23,685	20,941	19,372	14,334			
OCTOBER	86,275	58,317	46,909	39,467	37,778	23,768	19,917	19,143	14,266			
NOVEMBER	82,451	58,846	51,201	41,018	38,517	25,315	21,199	19,547	14,347			
DECEMBER	91,814	65,279	55,104	46,371	42,484	30,982	26,249	24,599	17,345			



January 2018 average weekly hours for Indiana manufacturing production decreased by 1.6 hours to 40.7. National manufacturing is ahead of the Indiana manufacturing weekly hours at 41.4. BLS Region states were at 42.2 hours (December 2017 data).

Avg. Weekly Manufacturing Production Hours (non seasonally adjusted)

