



INDIANA
WORKFORCE
DEVELOPMENT
AND ITS **WorkOne** CENTERS

Indiana's Employment and Labor Force Estimates January 2017

03/08/2017



Key Points

- **The Indiana Unemployment Rate is 4.0% in January 2017.**
Nationally the rate is 4.8%.
- Indiana's rate has decreased 0.7 over the year from January 2016 and currently is 4.0%.
- Indiana's Labor Force increased over the month by 7,162 with an increase in employment of 6,344 and unemployment increase of 818.
- Indiana's Labor Force Participation rate decreased over the month and is currently 64.2%. This remains above the US Labor Force Participation rate which stands at 62.9%.
- Total private employment stands at 58,400 above the March 2000 Peak.
- Private employment is up 178,200 since January 2013.



Key Points

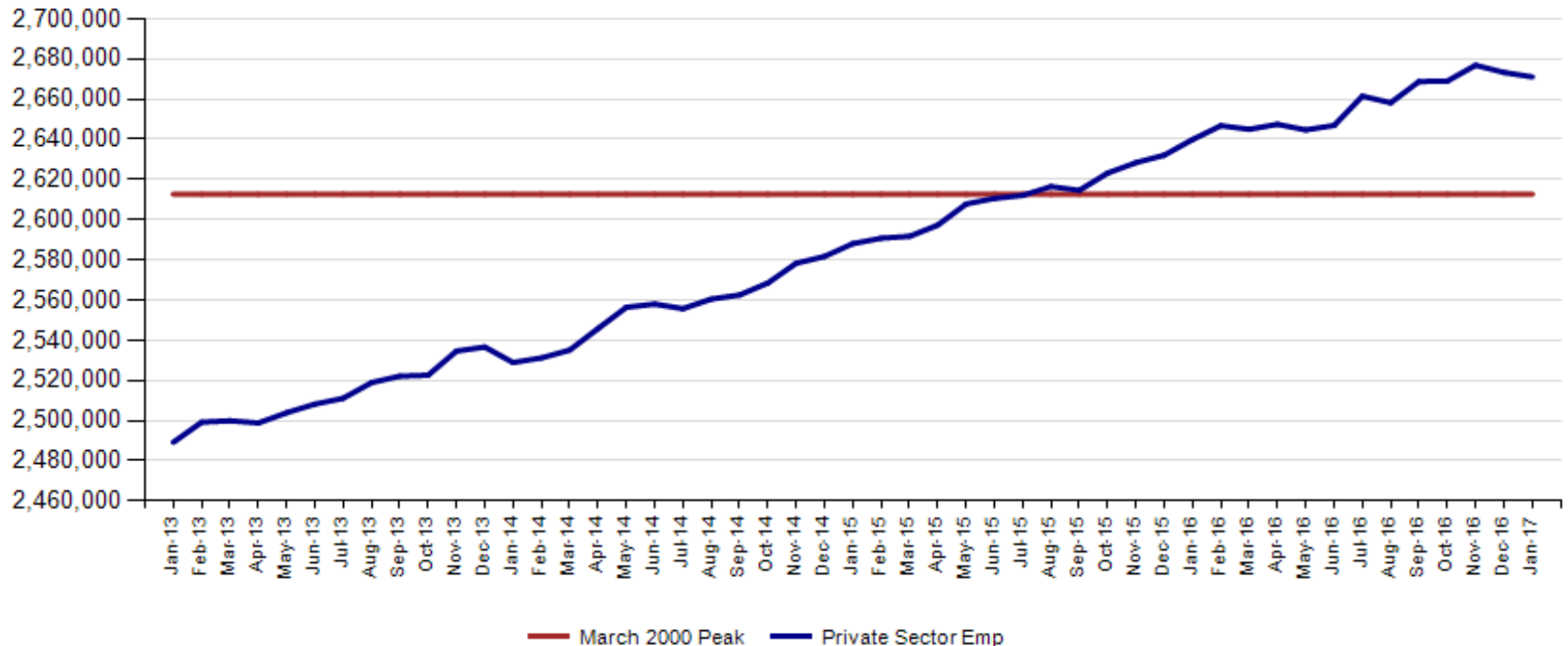
Indiana total private employment decreased 2,200 over the month and gains of 31,200 over the year. This is the 18th month above the prior peak of 2,612,700.

- **Indiana private employment now stands at 2,671,100.**
- Construction had gains of 6,100.
- Financial Activities had gains of 1,300.
- Private Educational & Health Services had gains of 500.
- The All Other category had gains of 400.
- Trade, Transportation & Utilities had declines of 6,400.
- Leisure and Hospitality had declines of 1,900.
- Professional & Business Services had declines of 1,500.
- Manufacturing had declines of 700.



January Total private employment is now at 58,400 above the March 2000 Peak. This is the 19th month above the prior peak. December 2016 Benchmarked total private employment is now the peak at 2,673,300

Indiana Private Sector Employment





January Indiana private sector employment decreased by 2,200 jobs over the month and is up 31,200 over the year. The monthly decrease was driven by a drop of 6,400 in Trade, Transportation and Utilities. This is a post holiday seasonal drop.

IN Employment Change Over the Month, Year-to-Date and Over the Year (seasonally adjusted)

Industry	January 2016	December 2016	January 2017	Month Change	Y-to-D Change	Y-to-Y Change
Private Educational & Health Services	458.0	470.0	470.5	0.5	0.5	12.5
.....Private Educational Services	68.1	71.3	70.2	-1.1	-1.1	2.1
.....Health Care & Social Assistance	389.9	398.7	400.3	1.6	1.6	10.4
Manufacturing	521.4	526.9	526.2	-0.7	-0.7	4.8
Professional & Business Services	332.6	337.3	335.8	-1.5	-1.5	3.2
Financial Activities	132.8	134.8	136.1	1.3	1.3	3.3
Construction	130.5	128.8	134.9	6.1	6.1	4.4
Leisure and Hospitality	304.8	310.2	308.3	-1.9	-1.9	3.5
Trade, Transportation & Utilities	593.9	598.4	592.0	-6.4	-6.4	-1.9
.....Trade	448.6	455.2	452.1	-3.1	-3.1	3.5
.....Transportation, Warehousing & Utilities	145.3	143.2	139.9	-3.3	-3.3	-5.4
All Other	165.9	166.9	167.3	0.4	0.4	1.4
Total Private	2,639.9	2,673.3	2,671.1	-2.2	-2.2	31.2
Government (Includes Public Schools & Hospitals)	426.4	430.6	431.6	1.0	1.0	5.2
Total Nonfarm	3,066.3	3,103.9	3,102.7	-1.2	-1.2	36.4
United States Total Private	121,097.0	123,041.0	123,278.0	237.0	237.0	2,181.0



January Total Nonfarm is 85,400 over the March 2000 peak.

IN Statewide Estimates (seasonally adjusted) -- January 2017

Supersector	Private Empl. Peak March 2000	Private Empl. Trough July 2009	December 2016	January 2017	Change Since Peak	Change Since Trough	Month to Month Change
Private Educational & Health Services	330.1	411.1	470.0	470.5	140.4	59.4	0.5
.....Private Educational Services	52.2	63.3	71.3	70.2	18.0	6.9	-1.1
.....Health Care & Social Assistance	277.9	347.8	398.7	400.3	122.4	52.5	1.6
Manufacturing	670.1	426.9	526.9	526.2	-143.9	99.3	-0.7
Professional & Business Services	261.6	256.9	337.3	335.8	74.2	78.9	-1.5
Financial Activities	145.7	130.7	134.8	136.1	-9.6	5.4	1.3
Construction	154.1	116.5	128.8	134.9	-19.2	18.4	6.1
Leisure and Hospitality	267.2	276.8	310.2	308.3	41.1	31.5	-1.9
Trade, Transportation & Utilities	617.5	545.7	598.4	592.0	-25.5	46.3	-6.4
.....Trade	485.1	421.6	455.2	452.1	-33.0	30.5	-3.1
.....Transportation, Warehousing & Utilities	132.4	124.1	143.2	139.9	7.5	15.8	-3.3
All Other	166.4	158.6	166.9	167.3	0.9	8.7	0.4
Total Private	2,612.7	2,323.2	2,673.3	2,671.1	58.4	347.9	-2.2
Government (Includes Public Schools & Hospitals)	404.6	434.5	430.6	431.6	27.0	-2.9	1.0
Total Nonfarm	3,017.3	2,757.7	3,103.9	3,102.7	85.4	345.0	-1.2
United States Total Private	110,875.0	108,171.0	123,041.0	123,278.0	12,403.0	15,107.0	237.0



Indiana job growth over the year remains under the National trend in private sector gains in January. Private Educational Services, Healthcare & Social Assistance, Financial Activities are growing faster than the US over the year. After a strong December, Manufacturing is now growing faster than the U.S. in year to year comparisons.

IN Employment Change Compared to the U.S.

Industry	Indiana Month to Month	U.S. Month to Month	Indiana vs U.S. Change	Indiana Year-to-Date	U.S. Year-to-Date	Indiana vs U.S. Change	Indiana Year-to-Year	U.S. Year-to-Year	Indiana vs U.S. Change
Private Educational & Health Services	0.1%	0.1%	OVER	0.1%	0.1%	OVER	2.7%	2.5%	OVER
.....Private Educational Services	-1.5%	-0.2%	UNDER	-1.5%	-0.2%	UNDER	3.1%	2.4%	OVER
.....Health Care & Social Assistance	0.4%	0.2%	OVER	0.4%	0.2%	OVER	2.7%	2.5%	OVER
Manufacturing	-0.1%	0.0%	UNDER	-0.1%	0.0%	UNDER	0.9%	-0.4%	OVER
Professional & Business Services	-0.4%	0.2%	UNDER	-0.4%	0.2%	UNDER	1.0%	2.9%	UNDER
Financial Activities	1.0%	0.4%	OVER	1.0%	0.4%	OVER	2.5%	2.3%	OVER
Construction	4.7%	0.5%	OVER	4.7%	0.5%	OVER	3.4%	2.6%	OVER
Leisure and Hospitality	-0.6%	0.2%	UNDER	-0.6%	0.2%	UNDER	1.1%	2.2%	UNDER
Trade, Transportation & Utilities	-1.1%	0.2%	UNDER	-1.1%	0.2%	UNDER	-0.3%	1.4%	UNDER
.....Trade	-0.7%	0.2%	UNDER	-0.7%	0.2%	UNDER	0.8%	1.2%	UNDER
.....Transportation, Warehousing & Utils	-2.3%	-0.1%	UNDER	-2.3%	-0.1%	UNDER	-3.7%	2.0%	UNDER
All Other	0.2%	0.3%	UNDER	0.2%	0.3%	UNDER	0.8%	0.2%	OVER
Total Private	-0.1%	0.2%	UNDER	-0.1%	0.2%	UNDER	1.2%	1.8%	UNDER
Government (Includes Public Schools & Hospitals)	0.2%	0.0%	OVER	0.2%	0.0%	OVER	1.2%	0.7%	OVER
Total Nonfarm	0.0%	0.2%	UNDER	0.0%	0.2%	UNDER	1.2%	1.6%	UNDER



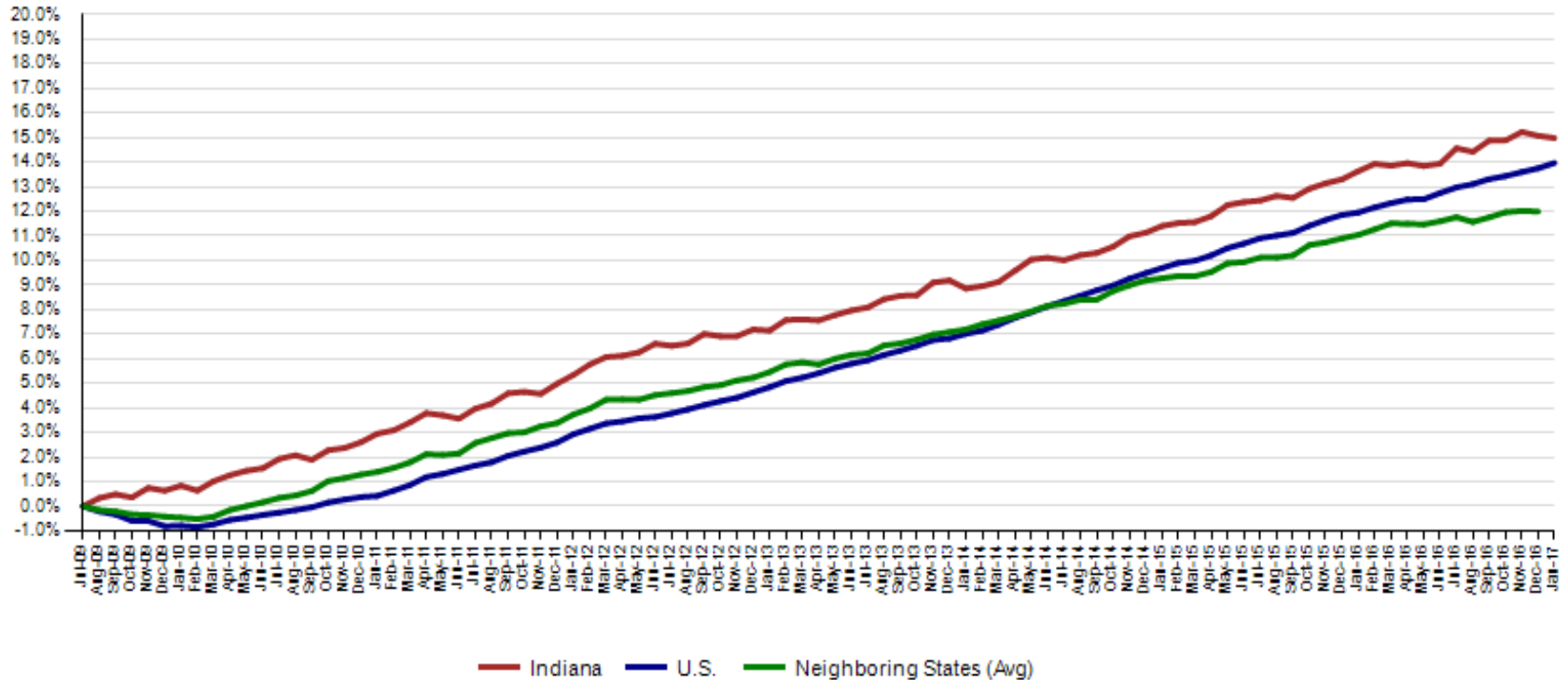
CES December Total Non Farm preliminary estimates were revised up by 20,200. The change from November to December is now a decrease of 4,400.

Revisions to December 2016 Estimates						
INDUSTRY TITLE	Nov	Dec Prel	Dec Rev	Revision	Chg from Nov	Prel Chg from Nov
Total Nonfarm	3108.3	3083.7	3103.9	20.2	-4.4	-24.6
Total Private	2676.9	2656.0	2673.3	17.3	-3.6	-20.9
Goods Producing	659.9	657.0	661.9	4.9	2.0	-2.9
Service-Providing	2448.4	2426.7	2442.0	15.3	-6.4	-21.7
Private Service Providing	2017	1999.0	2011.4	12.4	-5.6	-18.0
Construction	129.1	131.8	128.8	-3.0	-0.3	2.7
Manufacturing	524.6	519.0	526.9	7.9	2.3	-5.6
Trade, Transportation, and Utilities	598.8	597.6	598.4	0.8	-0.4	-1.2
Wholesale Trade	118.7	119.1	119.2	0.1	0.5	0.4
Retail Trade	335.8	335.7	336.0	0.3	0.2	-0.1
Transportation, Warehousing, and Utilities	144.3	142.8	143.2	0.4	-1.1	-1.5
Information	32.1	31.4	31.9	0.5	-0.2	-0.7
Financial Activities	134.9	133.9	134.8	0.9	-0.1	-1.0
Finance and Insurance	100.5	98.3	100.1	1.8	-0.4	-2.2
Real Estate and Rental and Leasing	34.4	35.6	34.7	-0.9	0.3	1.2
Professional and Business Services	340.7	328.8	337.3	8.5	-3.4	-11.9
Professional, Scientific, and Technical Services	115.8	111.3	115.3	4.0	-0.5	-4.5
Management of Companies and Enterprises	34.4	33.8	34.5	0.7	0.1	-0.6
Admin & Support & Waste Mgmt & Remediation Services	190.5	183.7	187.5	3.8	-3.0	-6.8
Education and Health Services	472.1	469.8	470.0	0.2	-2.1	-2.3
Educational Services	74.2	70.2	71.3	1.1	-2.9	-4.0
Health Care and Social Assistance	397.9	399.6	398.7	-0.9	0.8	1.7
Leisure and Hospitality	309.5	308.5	310.2	1.7	0.7	-1.0
Other Services	128.9	129.0	128.8	-0.2	-0.1	0.1
Government	431.4	427.7	430.6	2.9	-0.8	-3.7



Since the low point of employment in July 2009, private sector employment growth in Indiana has surpassed the U.S. (15.0% vs. 14.0%).

Private Sector Job Growth Since the Low Point of Employment in Indiana

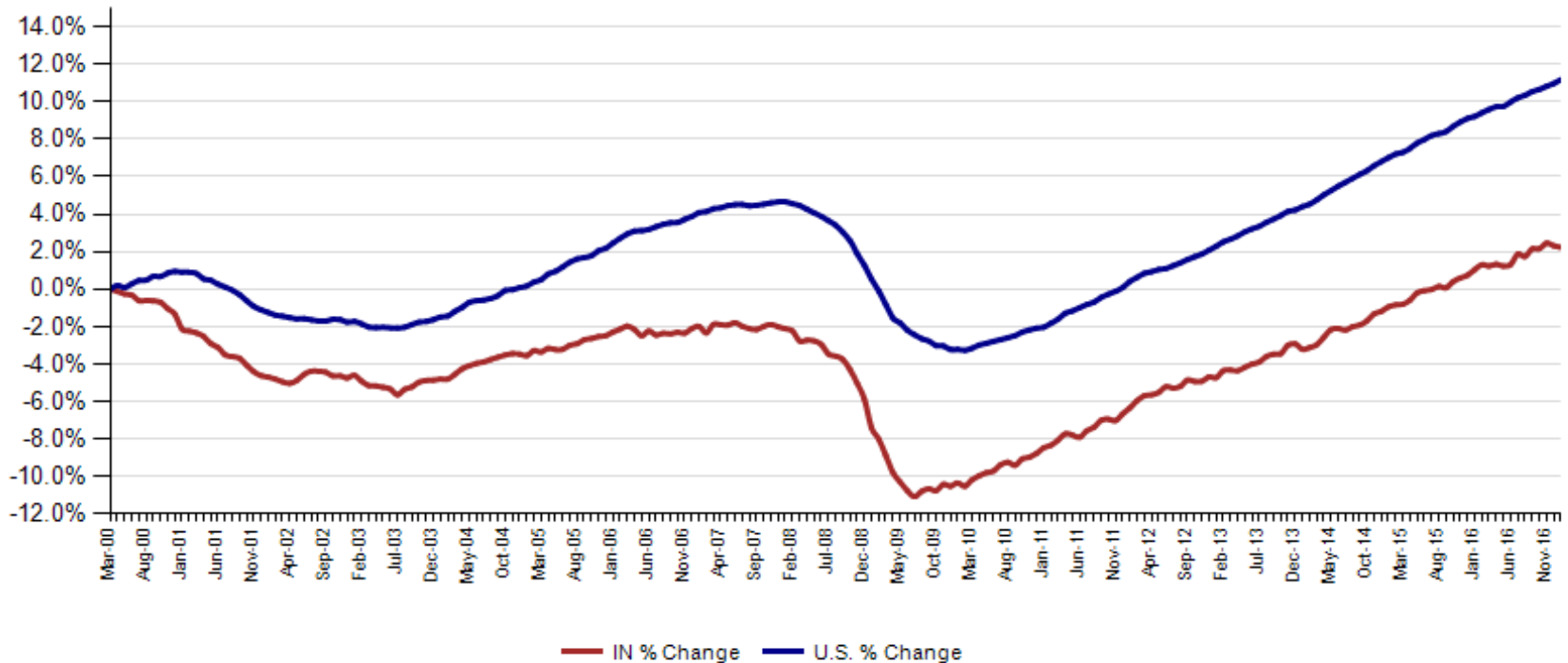


Source: Current Employment Statistics, seasonally adjusted



Since Indiana's high point of employment (March 2000), private sector employment growth in Indiana has lagged the U.S. (2.2% growth vs. 11.2% nationally).

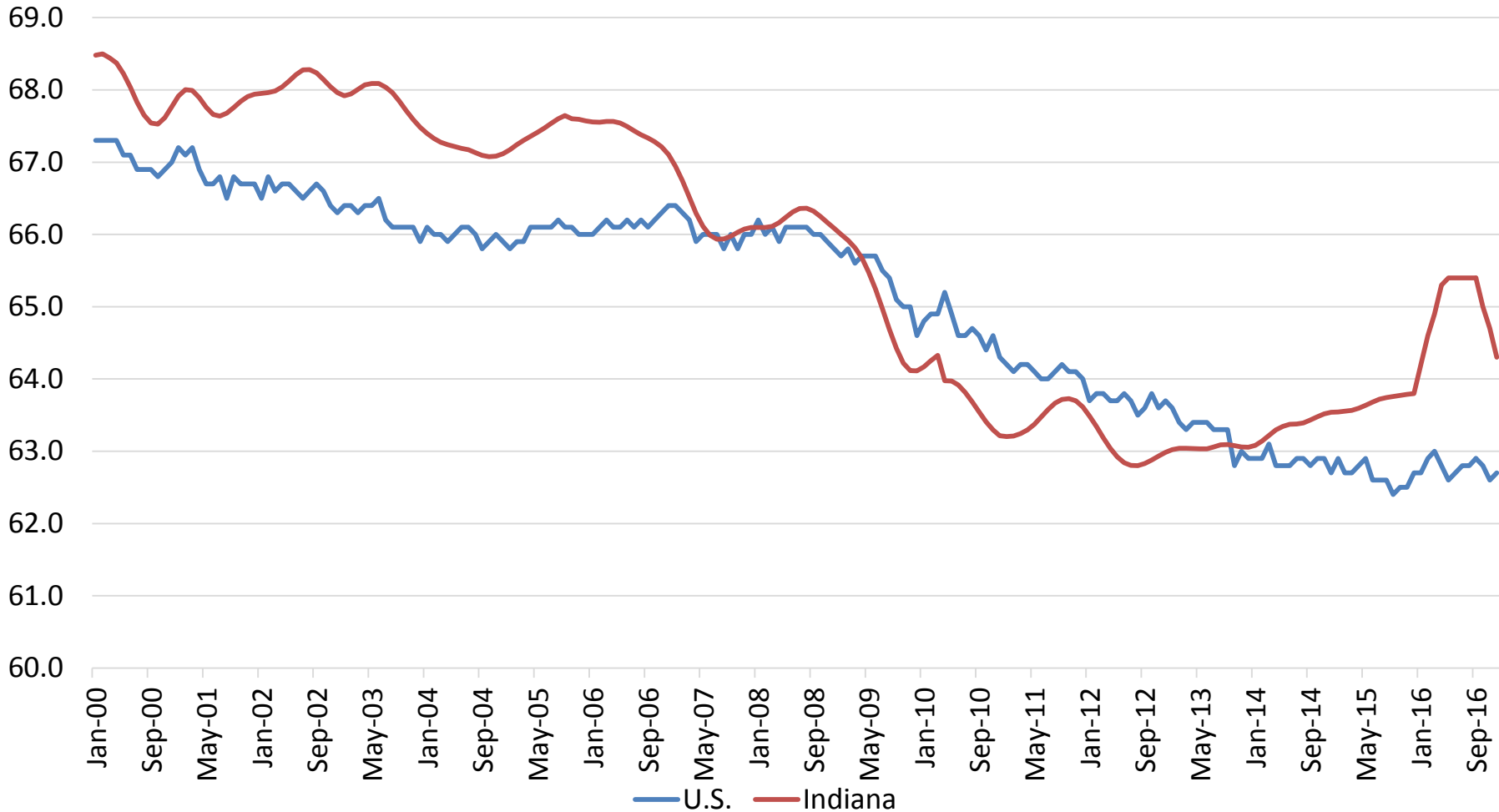
Private Sector Job Growth Since the Peak of Employment in Indiana



Source: Current Employment Statistics, seasonally adjusted



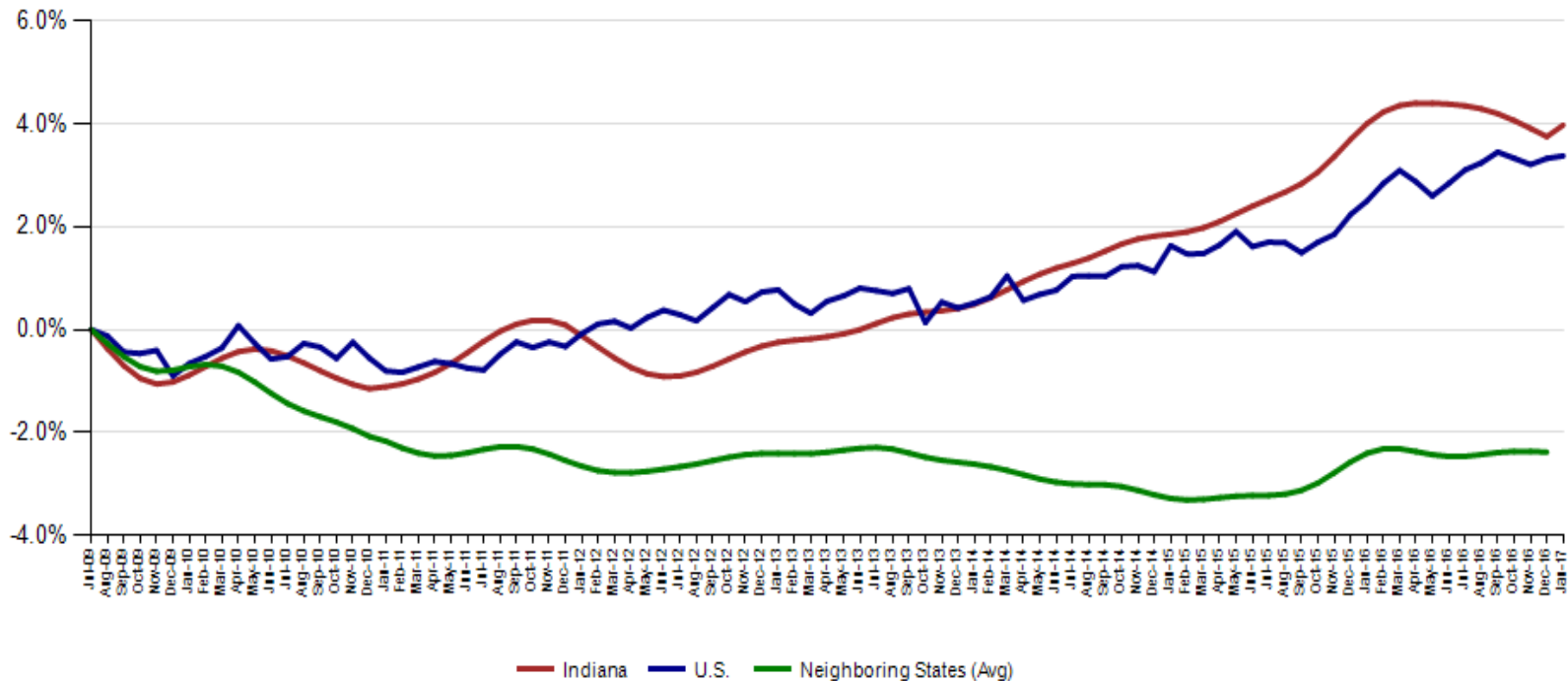
Indiana's January Labor Force gained 7,162 over the month. The Labor Force is now at 3,315,358 and the Participation Rate stands at 64.2%. January is down 13,563 from April 2016 peak of 3,328,921.





Indiana's Seasonally Adjusted Labor Force is now at 3,315,358 and the number of employed is at 3,181,803. An estimated 133,555 individuals are currently unemployed and seeking employment. 100,753 are not receiving UI claims.

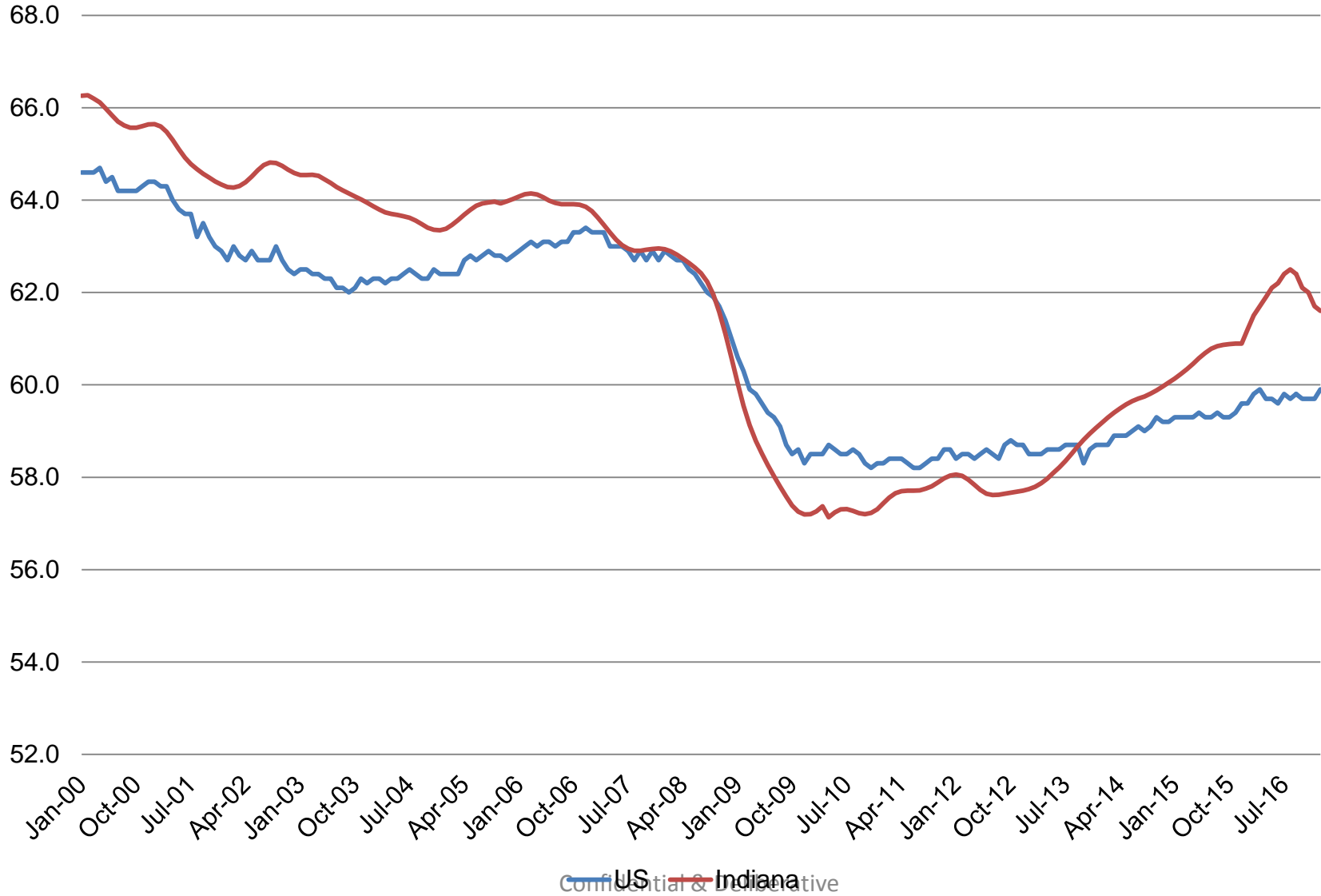
Labor Force Change Since July 2009 Indiana Trough (seasonally adjusted)





The January Indiana Employment to Population Ratio is 61.6% and the US Rate is now 59.9%

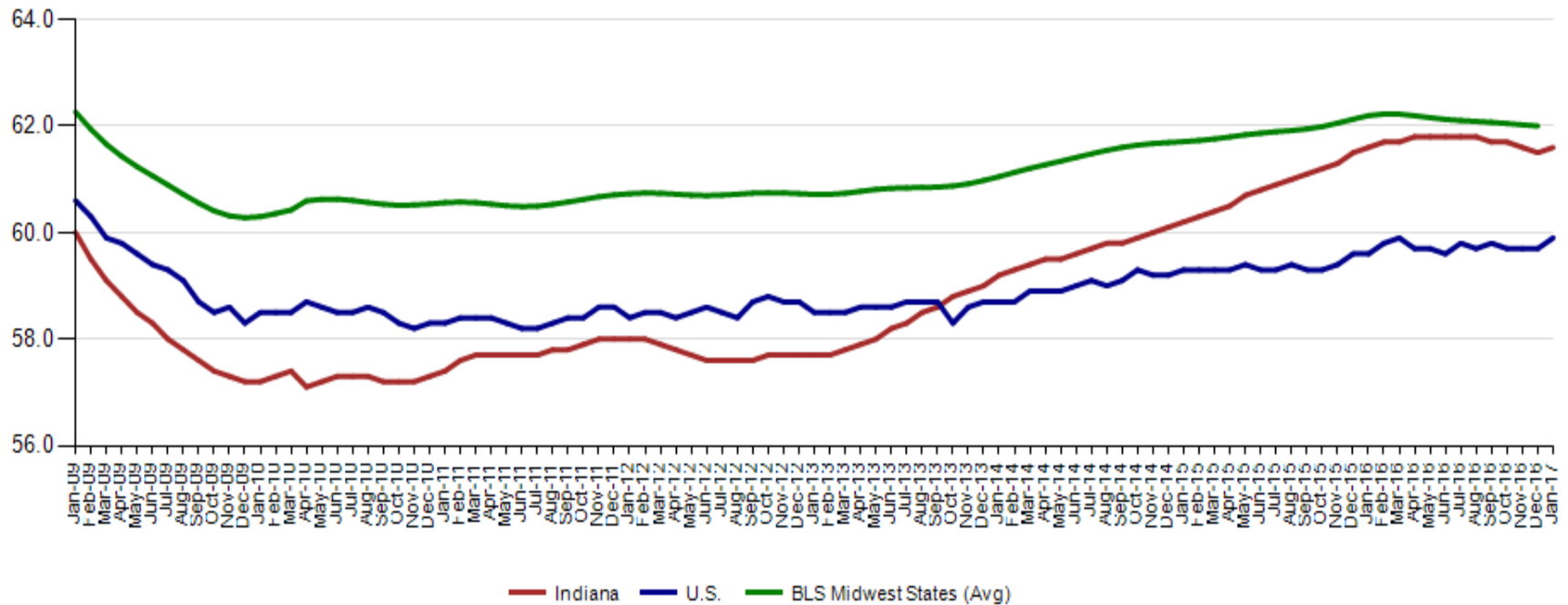
INDIANA
WORKFORCE
DEVELOPMENT
AND ITS **WorkOne** CENTERS



Confidential & Proprietary

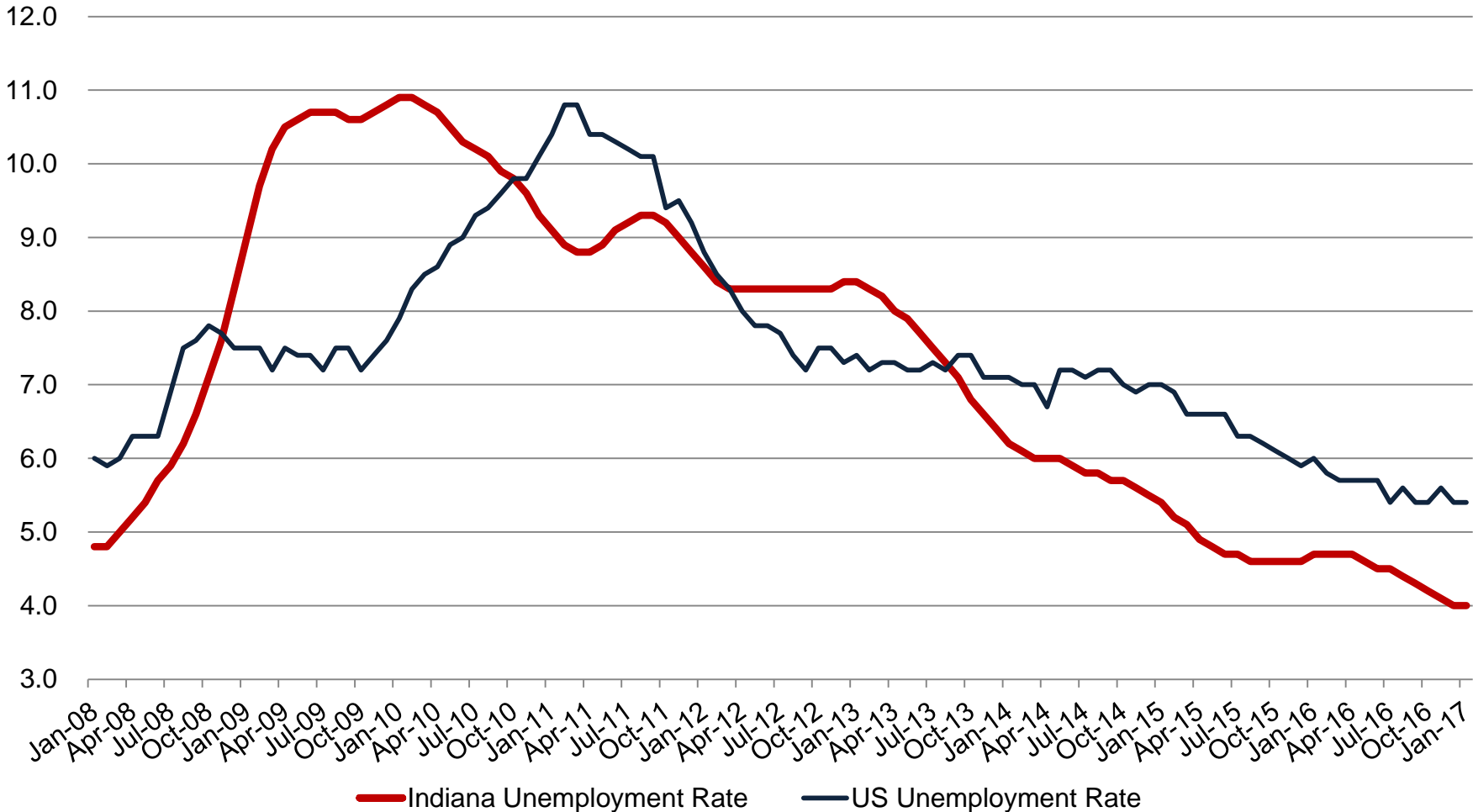
Indiana's Employment to Population January 2017 rate is 61.6% The January US Employment to Population Ratio is 59.9% The BLS Midwest Regional States held at 62.0% (December 2016).

Employment to Population Ratio (seasonally adjusted)





Indiana and US Seasonally Adjusted Unemployment Rate





Midwest Comparison Rates: Seasonally
Adjusted Over the Year and Over the Month
(confidential and preliminary)

	January 2016*	December 2016*	January 2017	Monthly change	Yearly change
Indiana	4.7%	4.0%	4.0%	0.0%	-0.7%
U.S.	4.9%	4.7%	4.8%	0.1%	-0.1%
Illinois	6.1%	5.7%		-5.7%	-6.1%
Kentucky	5.3%	4.8%		-4.8%	-5.3%
Michigan	5.0%	5.1%	5.2%	0.1%	0.2%
Ohio	5.0%	5.0%	5.0%	0.0%	0.0%

*2016 Benchmark



Employed persons (Current Population Survey)

Persons 16 years and over in the civilian noninstitutional population who, during the reference week, (a) did any work at all (at least 1 hour) as paid employees; worked in their own business, profession, or on their own farm, or worked 15 hours or more as unpaid workers in an enterprise operated by a member of the family; and (b) all those who were not working but who had jobs or businesses from which they were temporarily absent because of vacation, illness, bad weather, childcare problems, maternity or paternity leave, labor-management dispute, job training, or other family or personal reasons, whether or not they were paid for the time off or were seeking other jobs. Each employed person is counted only once, even if he or she holds more than one job. Excluded are persons whose only activity consisted of work around their own house (painting, repairing, or own home housework) or volunteer work for religious, charitable, and other organizations.

Unemployed persons (Current Population Survey)

Persons aged 16 years and older who had no employment during the reference week, were available for work, except for temporary illness, and had made specific efforts to find employment sometime during the 4-week period ending with the reference week. Persons who were waiting to be recalled to a job from which they had been laid off need not have been looking for work to be classified as unemployed.

Marginally attached workers (Current Population Survey)

Persons not in the labor force who want and are available for work, and who have looked for a job sometime in the prior 12 months (or since the end of their last job if they held one within the past 12 months), but were not counted as unemployed because they had not searched for work in the 4 weeks preceding the survey. Discouraged workers are a subset of the marginally attached.

Discouraged workers (Current Population Survey)

Persons not in the labor force who want and are available for a job and who have looked for work sometime in the past 12 months (or since the end of their last job if they held one within the past 12 months), but who are not currently looking because they believe there are no jobs available or there are none for which they would qualify.



Alternative Measures of Labor Underutilization 2016 Annual Averages

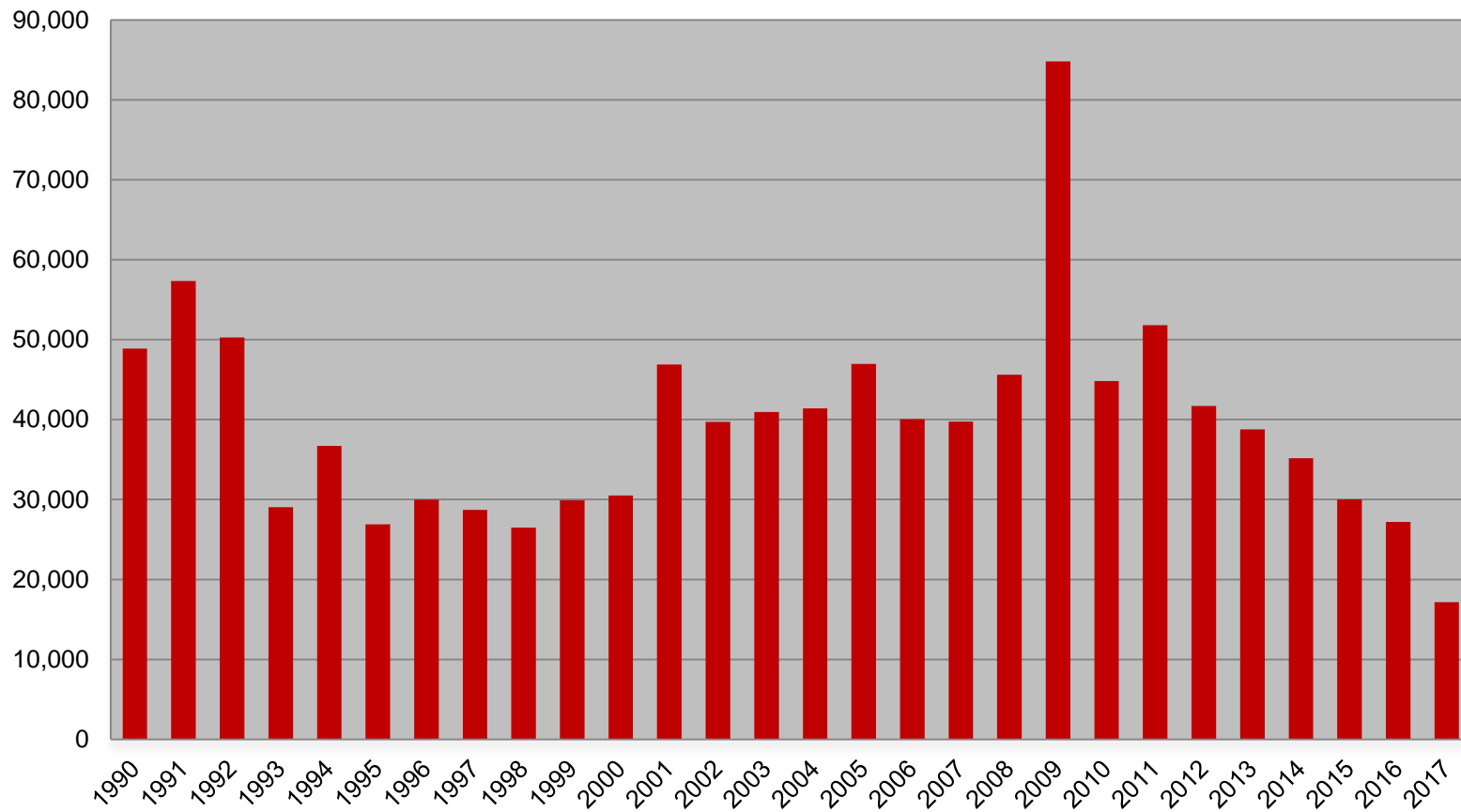
State	U-1	U-2	U-3	U-4	U-5	U-6
ILLINOIS	2.9	2.9	5.9	6.2	6.9	11.0
INDIANA	1.3	2.3	4.5	4.7	5.3	8.3
KENTUCKY	2.0	2.3	4.9	5.5	6.0	9.7
MICHIGAN	1.7	2.5	4.9	5.3	6.0	10.3
OHIO	2.0	2.2	4.9	5.2	6.0	9.7
UNITED STATES	2.0	2.3	4.9	5.2	5.9	9.6

The six state measures are based on the same definitions as those published for the U.S.:

- U-1, persons unemployed 15 weeks or longer, as a percent of the civilian labor force;
- U-2, job losers and persons who completed temporary jobs, as a percent of the civilian labor force;
- U-3, total unemployed, as a percent of the civilian labor force (this is the definition used for the official unemployment rate);
- U-4, total unemployed plus discouraged workers, as a percent of the civilian labor force plus discouraged workers;
- U-5, total unemployed, plus discouraged workers, plus all other marginally attached workers, as a percent of the civilian labor force plus all marginally attached workers; and
- U-6, total unemployed, plus all marginally attached workers, plus total employed part time for economic reasons, as a percent of the civilian labor force plus all marginally attached workers.



Weekly Initial Claims – Week 4





Regular UI Claims – Reference Week (12th of the month) Input to LAUS Unemployment Rate Model Declines over the month - and over the year

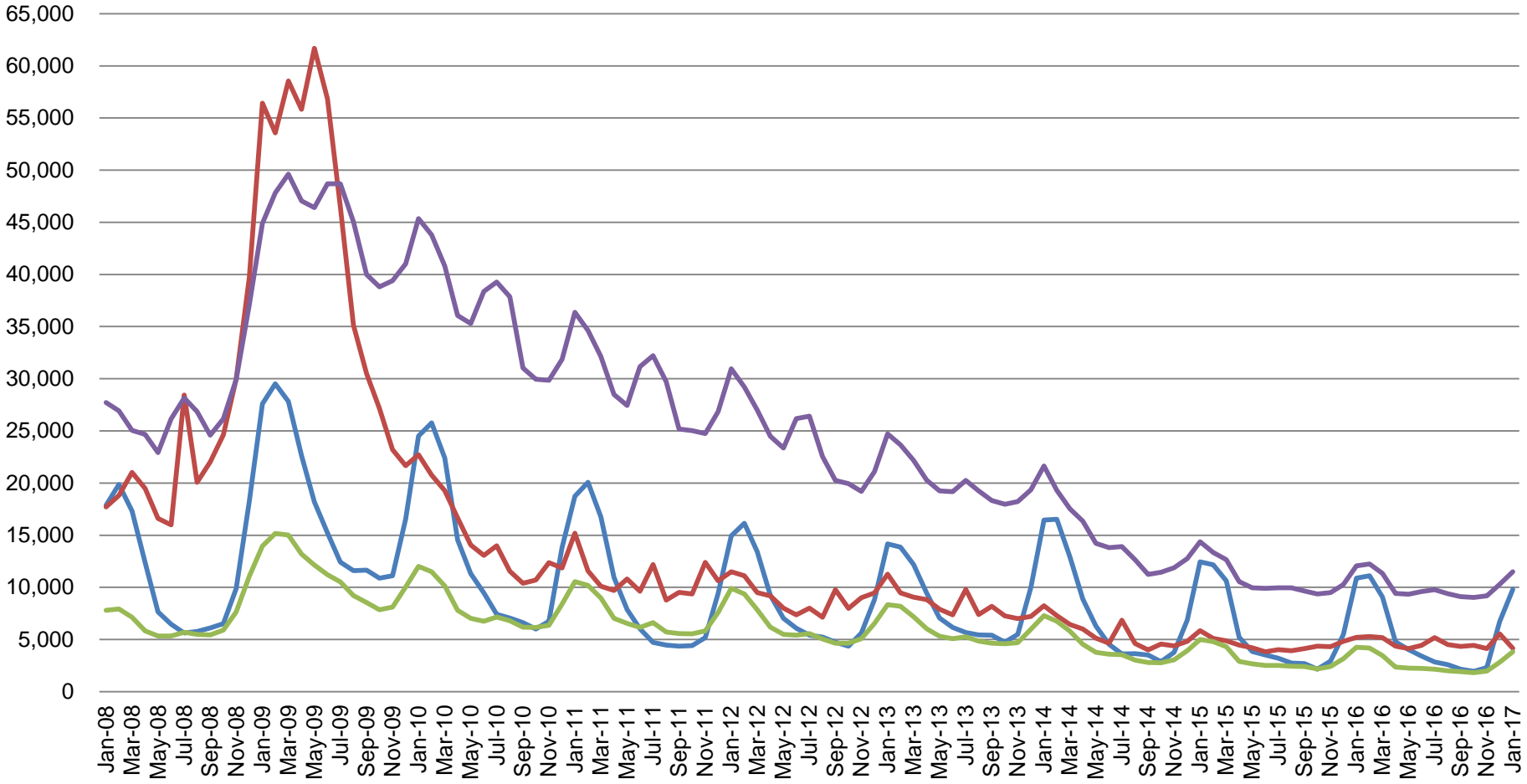
Without earnings – Reference week claims

	2006	2007	2008	2009	2010	2011	2012	2013	2014	2015	2016	2017	OTM Change	OTY Change
JANUARY	65,898	71,296	75,294	150,888	105,910	84,706	71,042	63,223	49,377	41,333	36,555	32,802	8,203	(3,753)
FEBRUARY	67,347	75,432	78,068	154,388	103,432	80,852	69,570	60,183	52,316	39,282	36,909			
MARCH	59,716	64,936	74,759	157,257	93,469	71,696	60,752	54,578	45,928	35,755	32,439			
APRIL	48,103	53,325	64,948	143,842	74,481	59,036	51,652	48,548	39,717	25,597	23,895			
MAY	46,779	46,002	55,480	141,174	66,779	54,680	46,328	42,997	32,460	22,807	22,300			
JUNE	45,533	46,350	57,228	136,670	67,996	55,021	46,820	41,722	29,524	22,030	22,025			
JULY	53,424	51,141	72,032	121,336	69,447	58,031	47,268	44,597	30,845	22,341	22,326			
AUGUST	45,021	43,887	61,985	103,509	62,976	51,710	42,134	39,998	26,061	21,472	20,737			
SEPTEMBER	41,247	42,500	61,548	92,680	58,280	46,824	41,955	39,563	23,685	20,941	19,372			
OCTOBER	42,487	42,313	67,306	86,275	58,317	46,909	39,467	37,778	23,768	19,917	19,143			
NOVEMBER	43,868	45,362	81,466	82,451	58,846	51,201	41,018	38,517	25,315	21,199	19,547			
DECEMBER	53,566	54,201	109,651	91,814	65,279	55,104	46,371	42,484	30,982	26,249	24,599			



Regular UI Claims by Industry

For the Reference Week of Each Month



Source: ETA 203

Construction Manufacturing Admin. and Support All Other



Internal and External Indiana Career Connect job orders are 62,754 in January. Health Care & Social Services, Administrative & Support & Waste Management & Remediation Services (this includes temp help services) and Retail Trade top this list.

NAICS_title	Jan-2017	Prior Year			Current Year			Change over Prior Year			Current Year Including External			Current Duration (days)
	November	December	January	November	December	January	November	December	January	November	December	January	January	
Total	7,160	7,246	8,346	8,301	8,113	10,401	16%	12%	25%	67,011	51,993	62,754	50	
Health Care and Social Services	1,715	1,854	1,893	1,919	1,845	2,676	12%	0%	41%	11,125	9,495	12,823	37	
Admin. & Support & Waste Mgt. & Rem. Services	869	926	1,221	1,032	1,096	1,196	19%	18%	-2%	7,844	7,066	9,362	51	
Retail Trade	648	715	701	704	691	781	9%	-3%	11%	11,060	8,942	9,179	44	
Accommodation and Food Services	151	192	143	338	230	563	124%	20%	294%	7,880	3,177	5,243	41	
Manufacturing	1,251	1,309	1,621	1,397	1,337	1,833	12%	2%	13%	3,747	3,330	4,278	53	
Transportation & Warehousing	363	363	464	366	404	398	1%	11%	-14%	5,197	4,506	3,435	79	
Professional, Scientific, and Technical Services	588	466	615	646	570	832	10%	22%	35%	3,508	2,818	3,206	66	
Finance and Insurance	168	198	254	189	246	219	13%	24%	-14%	2,733	2,643	2,549	87	
Educational Services	127	126	98	515	602	534	306%	378%	445%	2,494	2,280	2,480	26	
Wholesale Trade	363	322	330	364	344	437	0%	7%	32%	2,112	1,786	1,995	37	
Public Administration	207	146	211	134	83	132	-35%	-43%	-37%	2,430	1,499	1,873	110	
Real Estate and Rental and Leasing	81	85	93	131	89	112	62%	5%	20%	1,394	808	1,847	67	
Information	214	205	219	177	139	233	-17%	-32%	6%	2,683	1,178	1,610	38	
Other Services(Except Public Administration)	175	124	151	177	192	179	1%	55%	19%	1,061	911	921	122	
Management of Companies and Enterprises	21	19	32	3	11	6	-86%	-42%	-81%	773	556	779	169	
Construction	100	99	155	93	101	144	-7%	2%	-7%	514	476	650	91	
Utilities	68	56	93	73	69	65	7%	23%	-30%	187	248	253	46	
Arts, Entertainment, and Recreation	16	12	17	9	18	24	-44%	50%	41%	185	177	174	47	
Agriculture, Forestry, Fishing and Hunting	20	14	21	17	17	21	-15%	21%	0%	44	44	55	93	
Mining	8	6	3	10	13	7	25%	117%	133%	33	37	33	34	
Unallocated	7	9	11	7	16	9	0%	78%	-18%	7	16	9	142	



January 2017 average weekly hours for Indiana manufacturing production decreased slightly to 42.4 and remained ahead of the National manufacturing weekly hours of 41.6. Neighboring states were at 43.1 hours (December data).

Avg. Weekly Manufacturing Production Hours (non seasonally adjusted)

