

03/20/2019

Indiana's Employment and Labor Force Estimates

February 2019

INDIANA
DEPARTMENT OF
WORKFORCE
DEVELOPMENT

KEY POINTS: February 2019

Unemployment Rate

- Indiana = 3.5%
- U.S. = 3.8%

Indiana's rate has increased 0.2 percentage points over the year from February 2018.

Indiana's Labor Force

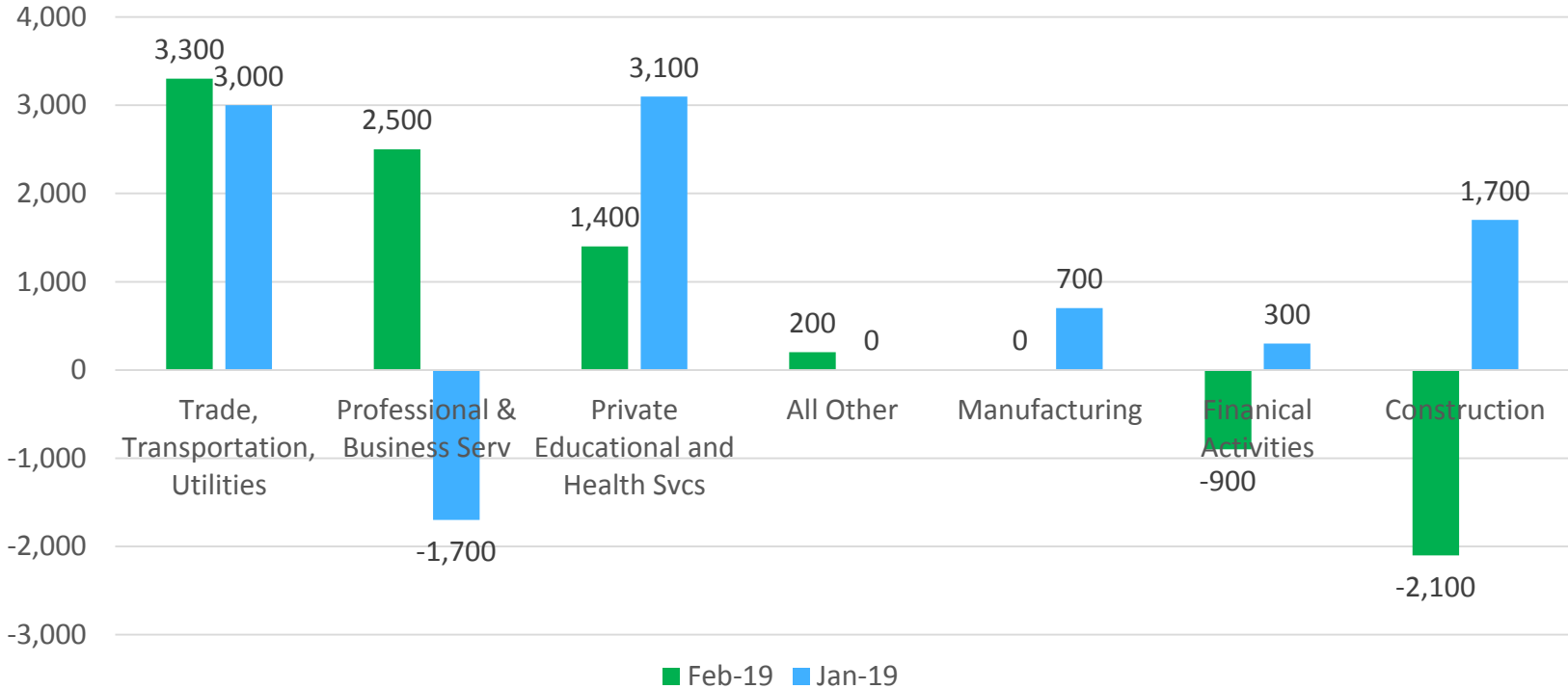
- Increased 7,997 due to an increase in employment of 6,242 and an increase in unemployment of 1,755.
- Increased by 44,922 over the year and is at 3,408,010 which is a new Labor Force peak.

Indiana's labor force participation rate increased 0.1% over the month and is currently 65.2%. This remains above the U.S. labor force participation rate of 63.2%.

KEY POINTS: FEBRUARY 2019

Indiana's Private Employment

- Increased by 4,400 over the month and had gains of 40,400 over the year.
- February private employment = 2,747,600



CES [Private Sector](#)
CES [Industry](#)

Revisions to January 2019 Estimates						
INDUSTRY TITLE	Dec	Jan Prel	Jan Rev	Revision	Chg from Dec	Pre Chg from Dec
Total Nonfarm	3161.1	3168.4	3171.9	4.8	8.1	3.3
Total Private	2732.1	2739.3	2743.2	4.6	7.4	2.8
Goods Producing	697.6	699.9	700.7	1.3	5.8	4.5
Service-Providing	2463.5	2468.5	2471.2	3.5	2.3	-1.2
Private Service Providing	2034.5	2039.4	2042.5	3.3	1.6	-1.7
Construction	147.0	148.7	149.4	1.2	2.5	1.3
Manufacturing	544.3	545.0	545.1	0.2	3.3	3.1
Trade, Transportation, and Utilities	597.5	600.5	599.7	-0.2	-2.2	-2.0
Wholesale Trade	121.1	120.6	120.4	0.2	0.6	0.4
Retail Trade	319.1	321.7	320.2	-0.9	-3.0	-2.1
Transportation, Warehousing, and Utilities	157.3	158.2	159.1	0.5	0.2	-0.3
Information	28.6	28.5	28.5	0.0	0.0	0.0
Financial Activities	138.4	138.7	138.1	0.2	0.1	-0.1
Finance and Insurance	102.7	103.1	102.6	0.1	-0.1	-0.2
Real Estate and Rental and Leasing	35.7	35.6	35.5	0.1	0.2	0.1
Professional and Business Services	344.2	342.5	346.5	0.3	0.8	0.5
Professional, Scientific, and Technical Services	120.4	120.1	122.7	-0.6	0.6	1.2
Management of Companies and Enterprises	34.2	34.2	34.3	-0.2	-0.1	0.1
Admin & Support & Waste Mgmt & Remediation Services	189.6	188.2	189.5	1.1	0.3	-0.8
Education and Health Services	484.4	487.5	486.7	0.8	2.7	1.9
Educational Services	66.4	67.9	68.8	0.4	0.3	-0.1
Health Care and Social Assistance	418.0	419.6	417.9	0.4	2.4	2.0
Leisure and Hospitality	308.9	309.0	310.0	1.9	0.9	-1.0
Other Services	132.5	132.7	133.0	0.3	-0.7	-1.0
Government	429.0	429.1	428.7	0.2	0.7	0.5



Comparing Local Area Unemployment Statistics (LAUS) and Current Employment Statistics (CES)

LAUS (Labor Force by Residence)

This counts people, not jobs.

- An estimate of employment based on where the employee lives, rather than where they work
- Used in calculating the labor force

CES (Employment by Job)

This counts jobs, not people

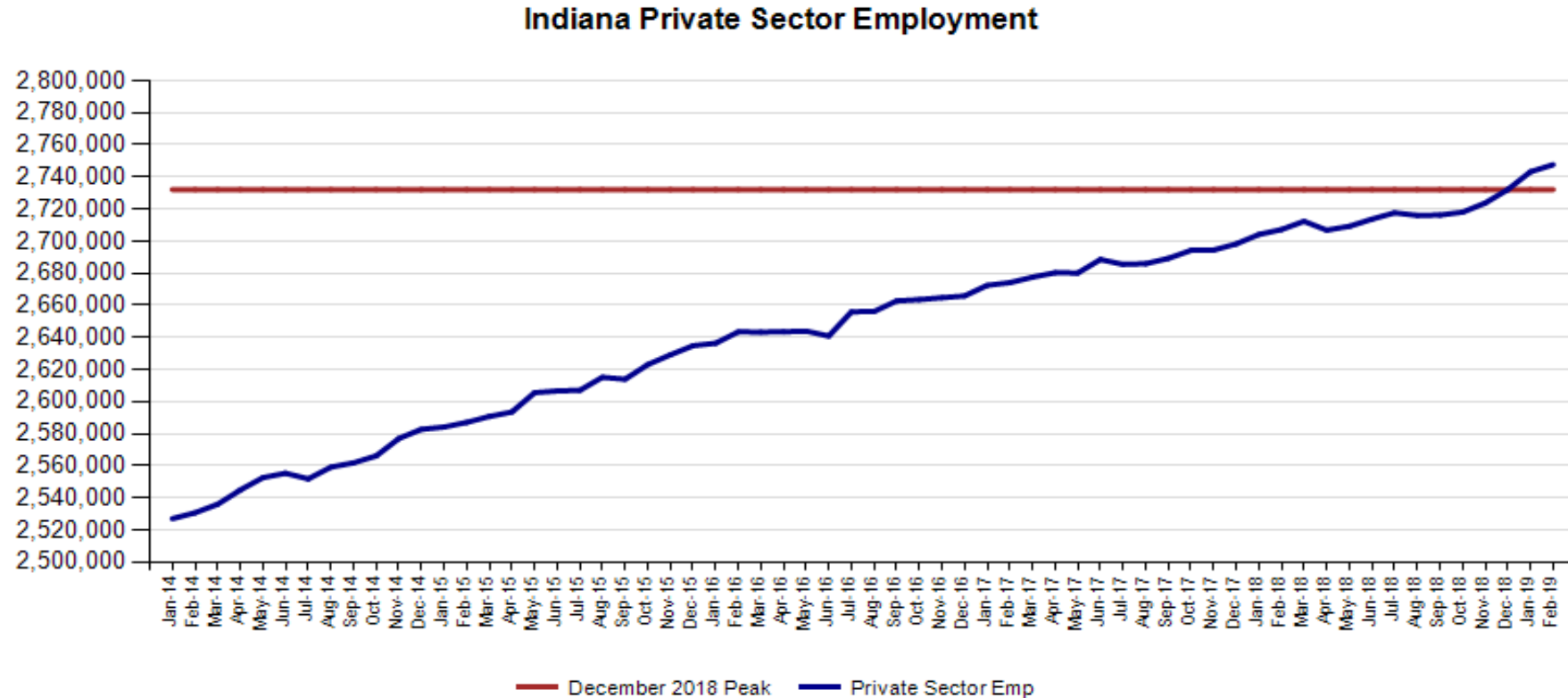
- An estimate of employment based on the location of the job regardless of the worker's residence
- Also called nonag wage and salary or nonfarm employment
- Used in Quarterly Census of Employment and Wages (QCEW), Occupational Employment Statistics (OES) and CES data

CES Monthly Jobs Report

INDIANA
DEPARTMENT OF
WORKFORCE
DEVELOPMENT

Indiana Private Sector Employment

February total private employment is 15,500 above the December 2018 peak.



Indiana Private Sector Employment Change

February 2019 increased by 4,400 jobs over the month and is up 40,400 over the year.

IN Employment Change Over the Month, Year-to-Date and Over the Year (seasonally adjusted)

- Trade, Transportation and Utilities gained 3,300 jobs and Professional & Business Services gained 2,500 jobs over the month.
- Construction lost 2,100 jobs over the month.

Industry	February 2018	December 2018	January 2019	February 2019	Month Change	Y-to-D Change	Y-to-Y Change
Private Educational & Health Services	470.3	484.4	486.7	488.1	1.4	3.7	17.8
.....Private Educational Services	62.5	66.4	68.8	68.8	0.0	2.4	6.3
.....Health Care & Social Assistance	407.8	418.0	417.9	419.3	1.4	1.3	11.5
Manufacturing	539.9	544.3	545.1	545.1	0.0	0.8	5.2
Professional & Business Services	344.1	344.2	346.5	349.0	2.5	4.8	4.9
Financial Activities	138.4	138.4	138.1	137.2	-0.9	-1.2	-1.2
Construction	139.9	147.0	149.4	147.3	-2.1	0.3	7.4
Leisure and Hospitality	310.3	308.9	310.0	310.0	0.0	1.1	-0.3
Trade, Transportation & Utilities	597.0	597.5	599.7	603.0	3.3	5.5	6.0
.....Trade	442.3	440.2	440.6	441.6	1.0	1.4	-0.7
.....Transportation, Warehousing & Utilities	154.7	157.3	159.1	161.4	2.3	4.1	6.7
All Other	167.3	167.4	167.7	167.9	0.2	0.5	0.6
Total Private	2,707.2	2,732.1	2,743.2	2,747.6	4.4	15.5	40.4
Government (Includes Public Schools & Hospitals)	427.6	429.0	428.7	429.8	1.1	0.8	2.2
Total Nonfarm	3,134.8	3,161.1	3,171.9	3,177.4	5.5	16.3	42.6
United States Total Private	125,697.0	127,790.0	128,098.0	128,123.0	25.0	333.0	2,426.0

Indiana Private Sector Employment Change From Peak and Trough

February 2019 estimates show Indiana has gained 423,400 jobs since July 2009.

IN Statewide Estimates (seasonally adjusted) -- February 2019

- Manufacturing has accounted for 118,400 of this increase of jobs.
- Professional & Business Services increased by 92,100 jobs over this time frame.

Supersector	Private Empl. Peak Dec 2018	Private Empl. Trough July 2009	January 2019	February 2019	Month to Month Change	Change Since Peak	Change Since Trough	% Month to Month Change
Private Educational & Health Services	484.4	411.1	486.7	488.1	1.4	3.7	77.0	0.3%
.....Private Educational Services	66.4	63.3	68.8	68.8	0.0	2.4	5.5	0.0%
.....Health Care & Social Assistance	418.0	347.8	417.9	419.3	1.4	1.3	71.5	0.3%
Manufacturing	544.3	426.7	545.1	545.1	0.0	0.8	118.4	0.0%
Professional & Business Services	344.2	256.9	346.5	349.0	2.5	4.8	92.1	0.7%
Financial Activities	138.4	130.7	138.1	137.2	-0.9	-1.2	6.5	-0.7%
Construction	147.0	117.4	149.4	147.3	-2.1	0.3	29.9	-1.4%
Leisure and Hospitality	308.9	276.8	310.0	310.0	0.0	1.1	33.2	0.0%
Trade, Transportation & Utilities	597.5	546.0	599.7	603.0	3.3	5.5	57.0	0.6%
.....Trade	440.2	421.5	440.6	441.6	1.0	1.4	20.1	0.2%
.....Transportation, Warehousing & Utilities	157.3	124.5	159.1	161.4	2.3	4.1	36.9	1.4%
All Other	167.4	158.6	167.7	167.9	0.2	0.5	9.3	0.1%
Total Private	2,732.1	2,324.2	2,743.2	2,747.6	4.4	15.5	423.4	0.2%
Government (Includes Public Schools & Hospitals)	429.0	434.5	428.7	429.8	1.1	0.8	-4.7	0.3%
Total Nonfarm	3,161.1	2,758.7	3,171.9	3,177.4	5.5	16.3	418.7	0.2%
United States Total Private	127,790.0	108,164.0	128,098.0	128,123.0	25.0	333.0	19,959.0	0.0%

Indiana Private Sector Employment Change Compared to U.S.

February 2019 Indiana private sector grew by 0.2% and the U.S. grew by 0.0%.

IN Employment Change Compared to the U.S.

- Private Educational & Health Services exceeded the U.S. over the month, year to date, and year to year.

Industry	Indiana Month to Month	U.S. Month to Month	Indiana vs U.S. Change
Private Educational & Health Services	0.3%	0.0%	OVER
.....Private Educational Services	0.0%	-0.5%	OVER
.....Health Care & Social Assistance	0.3%	0.1%	OVER
Manufacturing	0.0%	0.0%	UNDER
Professional & Business Services	0.7%	0.2%	OVER
Financial Activities	-0.7%	0.1%	UNDER
Construction	-1.4%	-0.4%	UNDER
Leisure and Hospitality	0.0%	0.0%	UNDER
Trade, Transportation & Utilities	0.6%	0.0%	OVER
.....Trade	0.2%	0.0%	OVER
.....Transportation, Warehousing & Utils	1.4%	-0.1%	OVER
All Other	0.1%	0.0%	OVER
Total Private	0.2%	0.0%	OVER
Government (Includes Public Schools & Hospitals)	0.3%	0.0%	OVER
Total Nonfarm	0.2%	0.0%	OVER

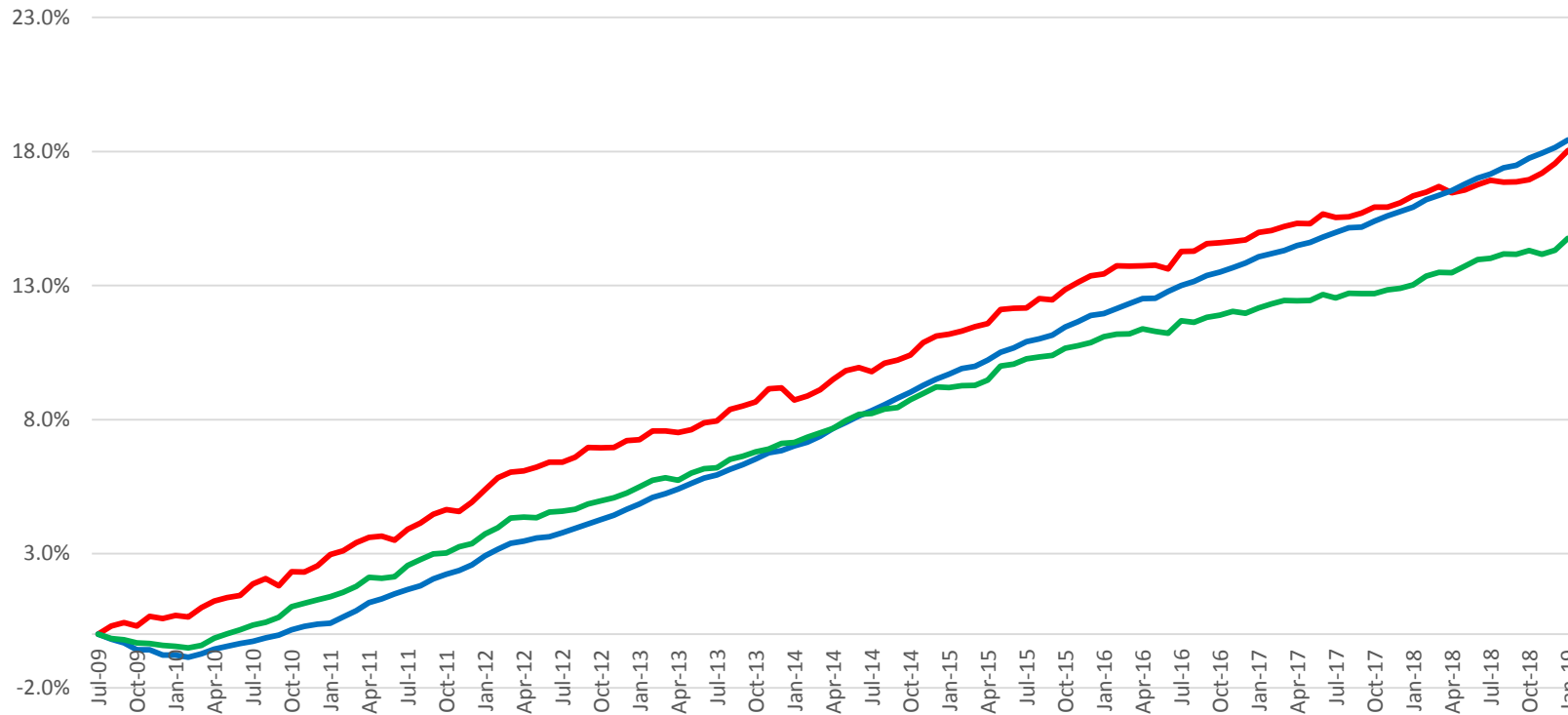
Indiana Year-to-Date	U.S. Year-to-Date	Indiana vs U.S. Change
0.8%	0.3%	OVER
3.6%	0.2%	OVER
0.3%	0.3%	OVER
0.1%	0.2%	UNDER
1.4%	0.3%	OVER
-0.9%	0.2%	UNDER
0.2%	0.3%	UNDER
0.4%	0.5%	UNDER
0.9%	0.2%	OVER
0.3%	0.1%	OVER
2.6%	0.5%	OVER
0.3%	0.0%	OVER
0.6%	0.3%	OVER
0.2%	0.0%	OVER
0.5%	0.2%	OVER

Indiana Year-to-Year	U.S. Year-to-Year	Indiana vs U.S. Change
3.8%	2.1%	OVER
10.1%	1.3%	OVER
2.8%	2.3%	OVER
1.0%	1.9%	UNDER
1.4%	2.6%	UNDER
-0.9%	1.2%	UNDER
5.3%	3.1%	OVER
-0.1%	2.5%	UNDER
1.0%	1.0%	UNDER
-0.2%	0.4%	UNDER
4.3%	3.3%	OVER
0.4%	1.4%	UNDER
1.5%	1.9%	UNDER
0.5%	0.4%	OVER
1.4%	1.7%	UNDER

Indiana Private Sector Employment Growth Since July 2009

Indiana is trailing the U.S. in private job growth since July 2009. The U.S. has grown by 18.5% while Indiana has grown by 18.2%.

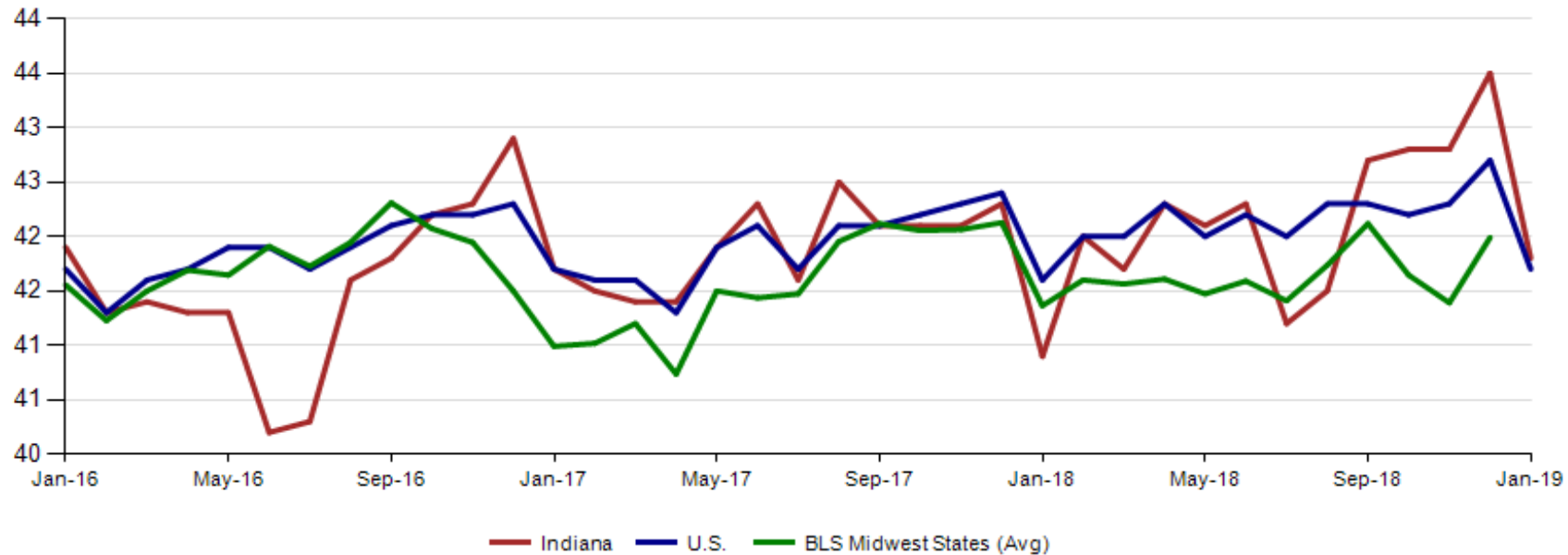
Private Sector Growth Since Low Point of Employment In Indiana



[Indiana Current Employment Statistics](#)

February 2019 average weekly hours for Indiana manufacturing production hours declined 0.5 to 41.2 hours. National manufacturing also declined by 0.2 to 41.5 weekly hours Midwest states decreased 0.6 to 41.3 hours per week (December 2018 data).

Avg. Weekly Manufacturing Production Hours (non seasonally adjusted)



LAUS Monthly Labor Force Report

INDIANA
DEPARTMENT OF
WORKFORCE
DEVELOPMENT

CURRENT EMPLOYMENT STATISTICS (CES) AND LOCAL AREA UNEMPLOYMENT STATISTICS (LAUS)

Point-in-Time Comparison

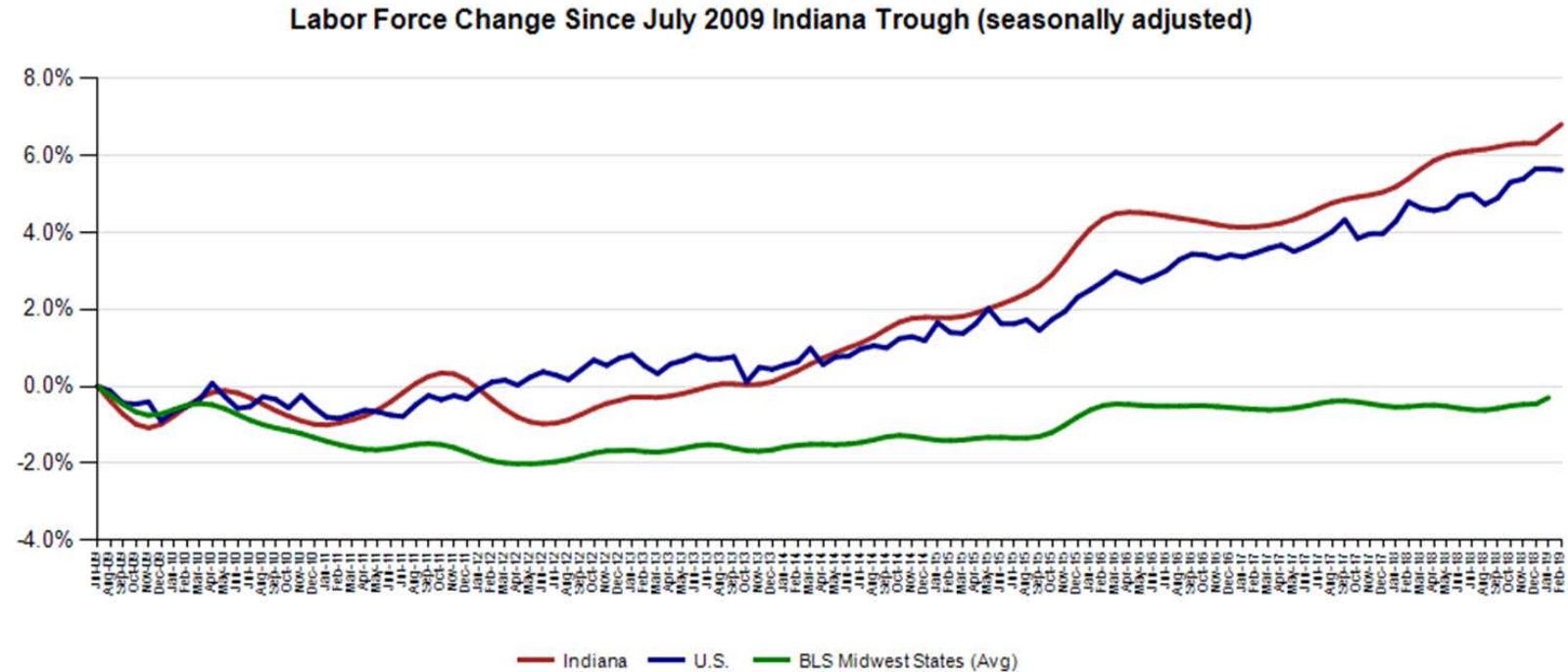
	December 2018 (Peak)	July 2009 (Trough)	January 2019	February 2019	Change Peak	Change Trough	Change Prev. Month
CES Employed	3,161.1	2,758.7	3,171.9	3,177.4	16.3	418.7	5.5
LAUS Employed	3,274.9	2,854.2	3,281.1	3,287.3	12.4	433.1	6.2
LAUS Unemployed	117.4	336.8	118.9	120.7	3.3	-216.1	1.8
Labor Force	3,392.3	3,191.0	3,400.0	3,408.0	15.7	217.0	8.0
Unemployment Rate	3.5	10.6	3.5	3.5	0.0	-7.1	0.0



Indiana Labor Force

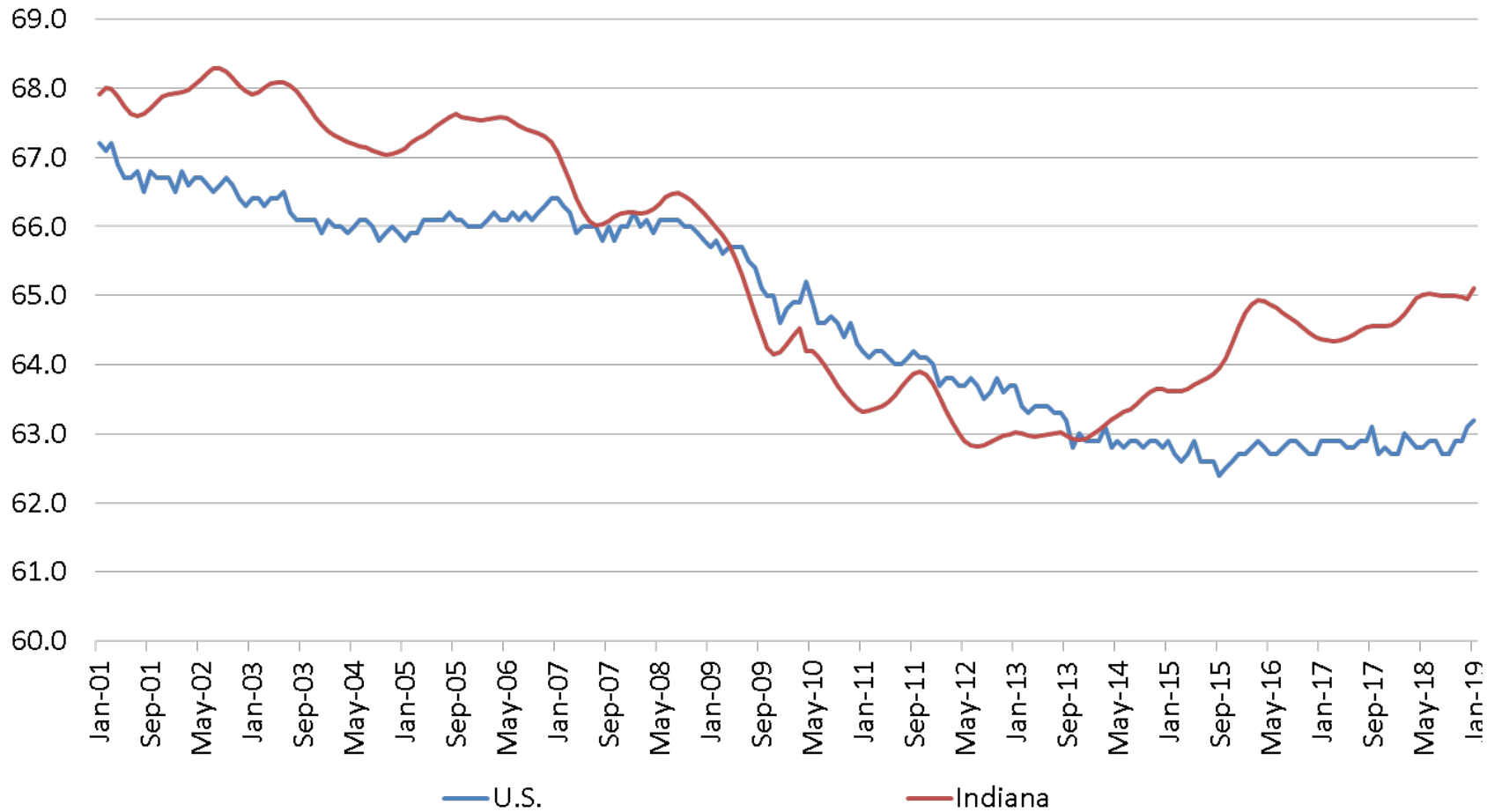
February 2019 Indiana Seasonally Adjusted Labor Force stands at 3,408,010

- Employed LF increased by 6,242 over the month.
- Unemployment increased by 1,755 over the month.



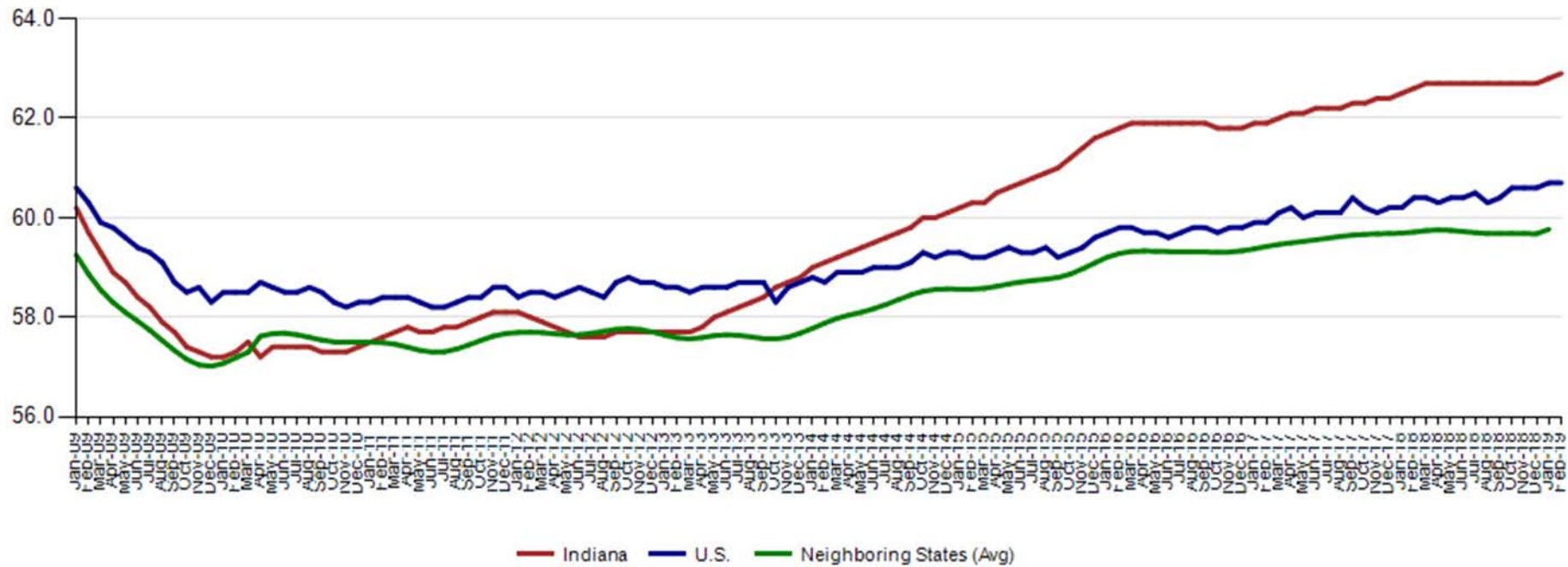
Labor Force Participation Rate

Indiana is at 65.2% compared to U.S. at 63.2%



The Indiana Employment to Population Ratio for February 2019 is 62.9% compared to the U.S. at 60.7%

Employment to Population Ratio (seasonally adjusted)



Alternative Measures of Labor Underutilization 2018 Annual Averages

State	U-1	U-2	U-3	U-4	U-5	U-6
ILLINOIS	1.6	2.1	4.2	4.4	5.1	8.1
INDIANA	1.0	1.7	3.5	3.7	4.2	6.6
KENTUCKY	1.3	1.8	4.4	4.6	5.3	8.1
MICHIGAN	1.3	1.8	4.1	4.4	4.9	7.9
MINNESOTA	0.8	1.4	2.8	2.9	3.2	5.4
OHIO	1.4	2.1	4.5	4.7	5.4	8.3
WISCONSIN	0.9	1.6	3.0	3.1	3.5	6.0
UNITED STATES	1.4	1.8	3.9	4.1	4.8	7.7

The six state measures are based on the same definitions as those published for the U.S.:

- U-1, persons unemployed 15 weeks or longer, as a percent of the civilian labor force;
- U-2, job losers and persons who completed temporary jobs, as a percent of the civilian labor force;
- U-3, total unemployed, as a percent of the civilian labor force (this is the definition used for the official unemployment rate);
- U-4, total unemployed plus discouraged workers, as a percent of the civilian labor force plus discouraged workers;
- U-5, total unemployed, plus discouraged workers, plus all other marginally attached workers, as a percent of the civilian labor force plus all marginally attached workers; and
- U-6, total unemployed, plus all marginally attached workers, plus total employed part time for economic reasons, as a percent of the civilian labor force plus all marginally attached workers.

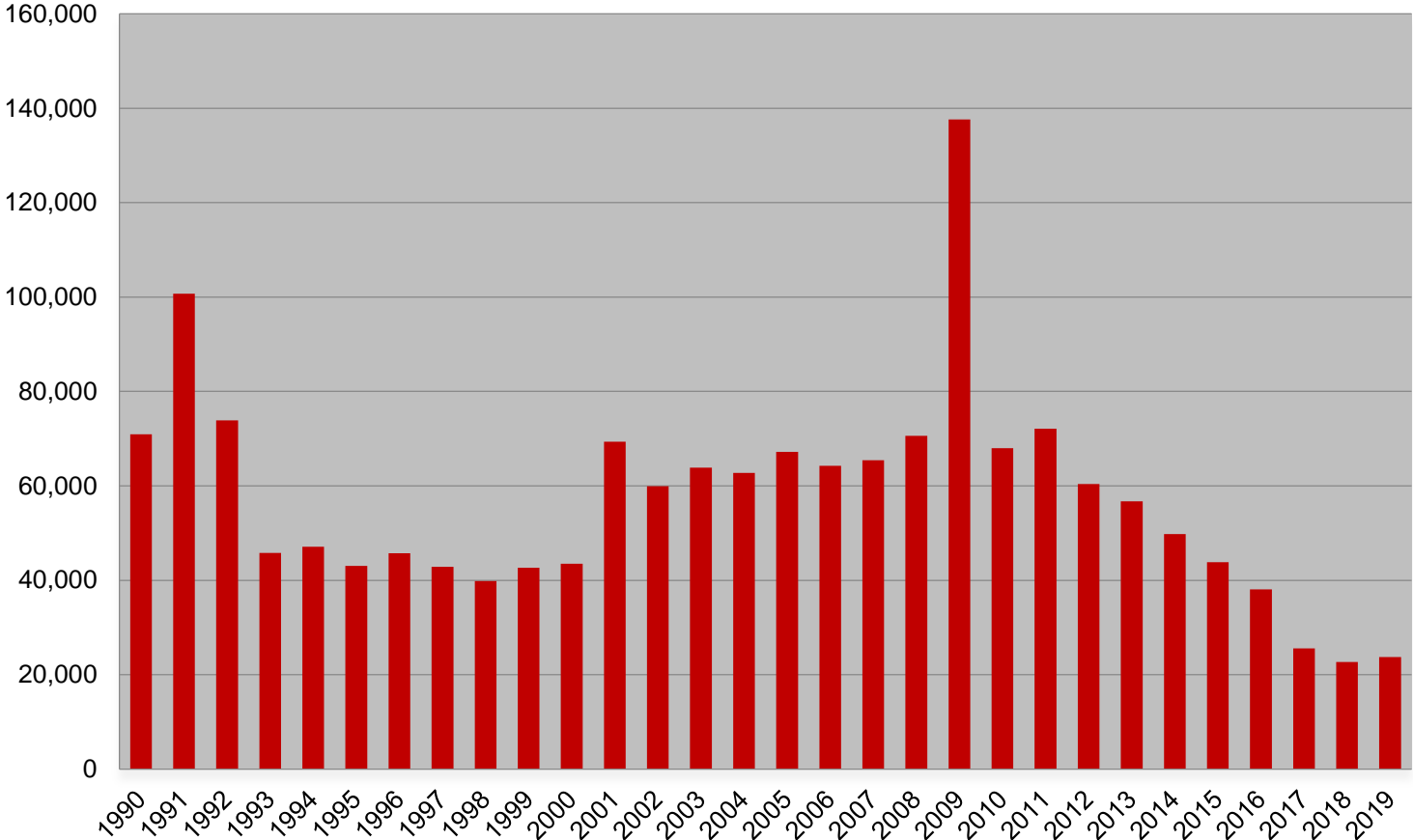
Midwest Comparison Rates: Seasonally
Adjusted Over the Year and Over the Month
(confidential and preliminary)

	February 2018	January 2019	February 2019	Monthly change	Yearly change
Indiana	3.3%	3.5%	3.5%	0.0%	0.2%
U.S.	4.1%	4.0%	3.8%	-0.2%	-0.3%
Illinois	4.4%	4.3%	4.3%	0.0%	-0.1%
Kentucky	4.3%	4.2%	4.1%	-0.1%	-0.2%
Michigan	4.4%	4.0%	4.0%	0.0%	-0.4%
Minnesota	3.1%	3.0%	3.1%	0.1%	0.0%
Ohio	4.5%	4.7%	4.6%	-0.1%	0.1%
Wisconsin	2.9%	3.0%	2.9%	-0.1%	0.0%

*2018 Benchmark

Weekly Initial Claims – Week 7

Total aggregated UI claims for the first 7 weeks of each year as reported to ETA.



Regular UI Claims – reference Week (12th of the month) Input to LAUS Unemployment Rate Model Declines over the month - and over the year

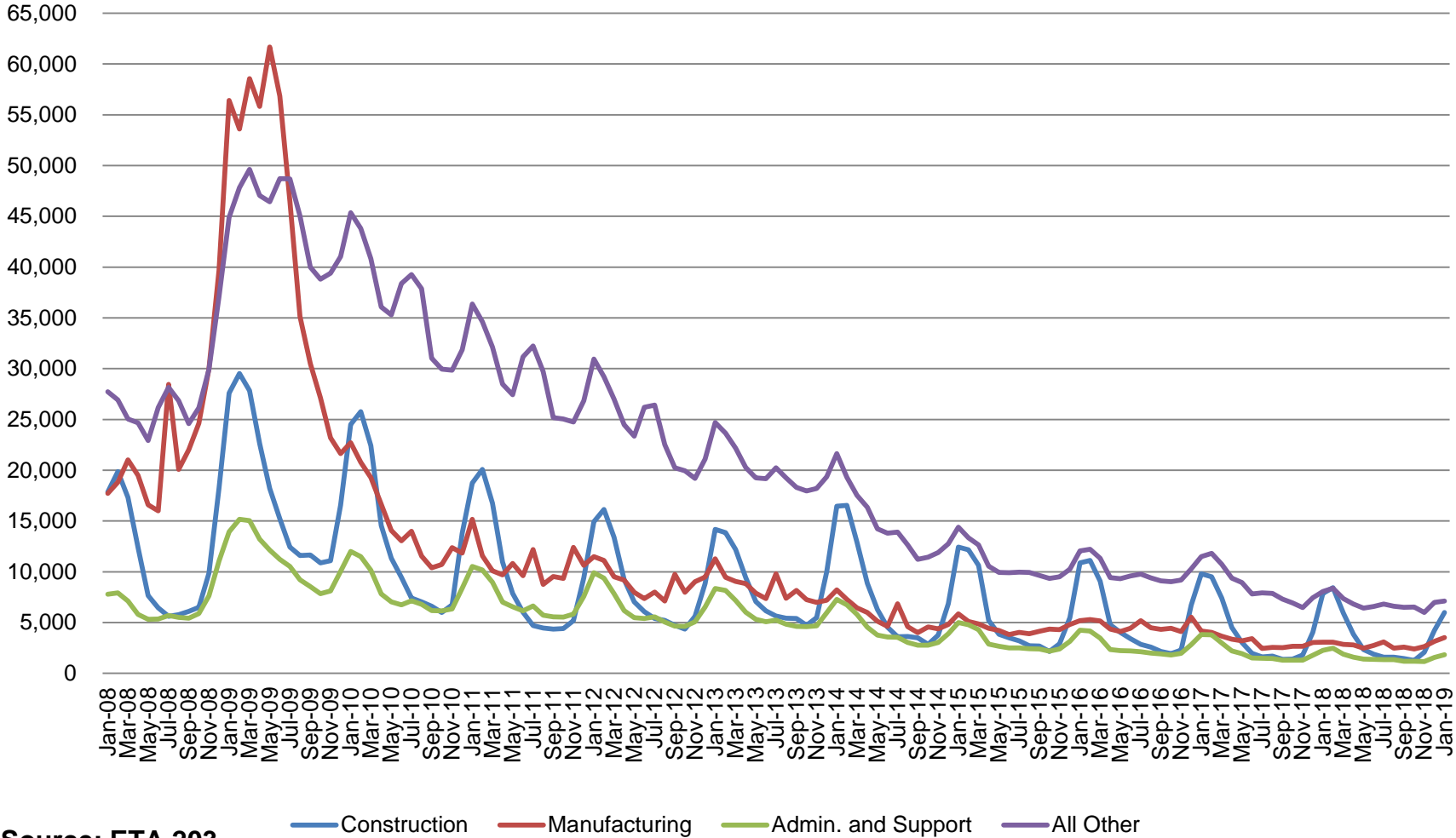
Without earnings – Reference week claims

	2009	2013	2014	2015	2016	2017	2018	2019	OTM Change	OTY Change
JANUARY	150,888	63,223	49,377	41,333	36,555	33,137	24,968	21,808	5,115	(3,160)
FEBRUARY	154,388	60,183	52,316	39,282	36,909	32,463	25,879	23,848	23,848	(2,031)
MARCH	157,257	54,578	45,928	35,755	32,439	32,141	21,171			
APRIL	143,842	48,548	39,717	25,597	23,895	21,998	17,618			
MAY	141,174	42,997	32,460	22,807	22,300	19,431	14,774			
JUNE	136,670	41,722	29,524	22,030	22,025	16,722	14,653			
JULY	121,336	44,597	30,845	22,341	22,326	15,775	15,098			
AUGUST	103,509	39,998	26,061	21,472	20,737	15,692	13,959			
SEPTEMBER	92,680	39,563	23,685	20,941	19,372	14,334	12,981			
OCTOBER	86,275	37,778	23,768	19,917	19,143	14,266	13,083			
NOVEMBER	82,451	38,517	25,315	21,199	19,547	14,347	15,499			
DECEMBER	91,814	42,484	30,982	26,249	24,599	17,345	16,693			



Regular UI Claims by Industry

For the Reference Week of Each Month



Source: ETA 203

Construction Manufacturing Admin. and Support All Other



Labor Force by Race and Gender

Table a. Employment status of the civilian non-institutional population by sex, age, race, and Hispanic origin, March 2018 - February 2019 (based on CPS)

	Unemployment Rate	Civilian labor force participation rate
	Indiana	
Both Sexes		
All Races		
Age 16+	3.7	65.6
White		
Age 16+	3.2	65.7
Black		
Age 16+	7.2	65.0
Hispanic		
Age 16+	2.9	74.1
Male, All Races		
Age 16+	3.6	72.5
Female, All Races		
Age 16+	3.8	59.1
Male, White		
Age 16+	3.1	72.7
Female, White		
Age 16+	3.3	58.9



Indiana: Not in Labor Force by Gender and Age
March 2018 - February 2019
Current Population Survey, Bureau of Labor Statistics (in 1000s)

	Total	Age			Sex	
		16 to 24 years	25 to 54 years	55 years and over	Men	Women
Indiana						
Total not in the labor force	1,795.3	289.7	399.7	1,105.9	697.5	1,097.9
Do not want a job now	1,683.5	251.8	359.4	1,072.2	647.5	1,036.0
Want a job	111.9	37.9	40.3	33.7	50.0	61.9
Did not search for work in previous year	78.6	24.8	26.0	27.9	32.9	45.7
Searched for work in previous year	33.2	13.1	14.3	5.8	17.0	16.2
Not available to work now	7.4	2.4	3.6	1.3	2.8	4.6
Available to work now	25.9	10.7	10.7	4.5	14.3	11.6
Reason not currently looking:						
Discouragement over job prospects	6.4	3.2	2.3	0.8	4.3	2.0
Reasons other than discouragement	19.5	7.5	8.4	3.7	10.0	9.6

