



INDIANA
WORKFORCE
DEVELOPMENT
AND ITS **WorkOne** CENTERS

Indiana's Employment and Labor Force Estimates February 2017

03/21/2017



Key Points

- **The Indiana Unemployment Rate is 4.1% in February 2017.**
Nationally the rate is 4.7%.
- Indiana's rate has decreased 0.6 over the year from February 2016 and currently is 4.1%.
- Indiana's Labor Force increased over the month by 7,912 with an increase in employment of 6,394 and unemployment increase of 1,518.
- Indiana's Labor Force Participation rate increased the month and is currently 64.4%. This remains above the US Labor Force Participation rate which stands at 63.0%.
- Total private employment stands at 67,300 above the March 2000 Peak.



Key Points

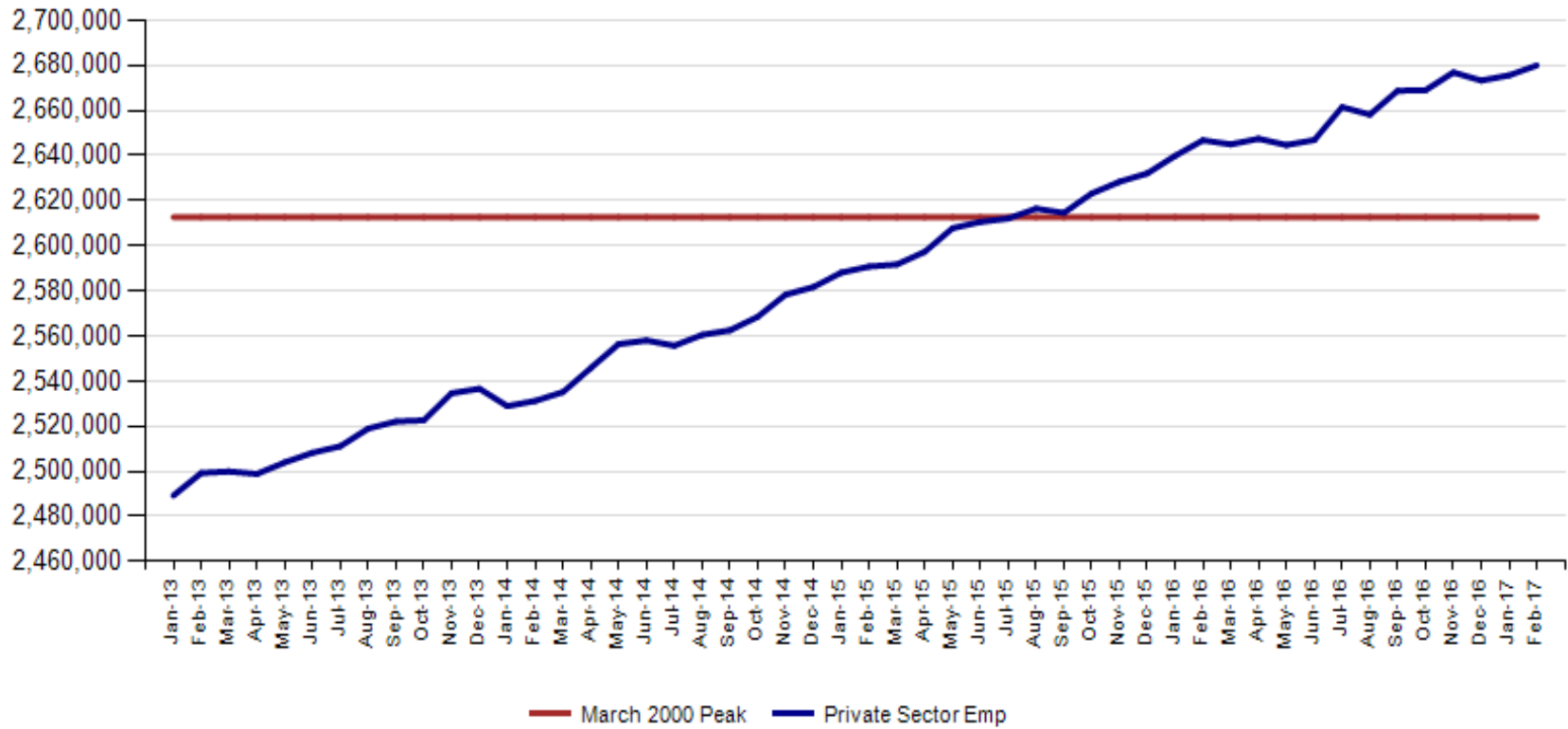
Indiana total private employment increased 4,400 over the month and gains of 33,200 over the year.

- Indiana February private employment now stands at 2,680,000 which is now the new peak.
- Manufacturing had gains of 4,200.
- Trade, Transportation & Utilities had gains of 2,300.
- The All Other Category had gains of 2,000.
- Private Educational & Health Services had gains of 600.
- Construction had gains of 300.
- Leisure and Hospitality had declines of 1,900.
- Financial Activities had declines of 800.
- Professional & Business Services had declines of 600.



February Total private employment is now at 67,300 above the March 2000 peak. This is the 20th month above the prior peak. December 2016 total private employment was the new peak at 2,676,900.

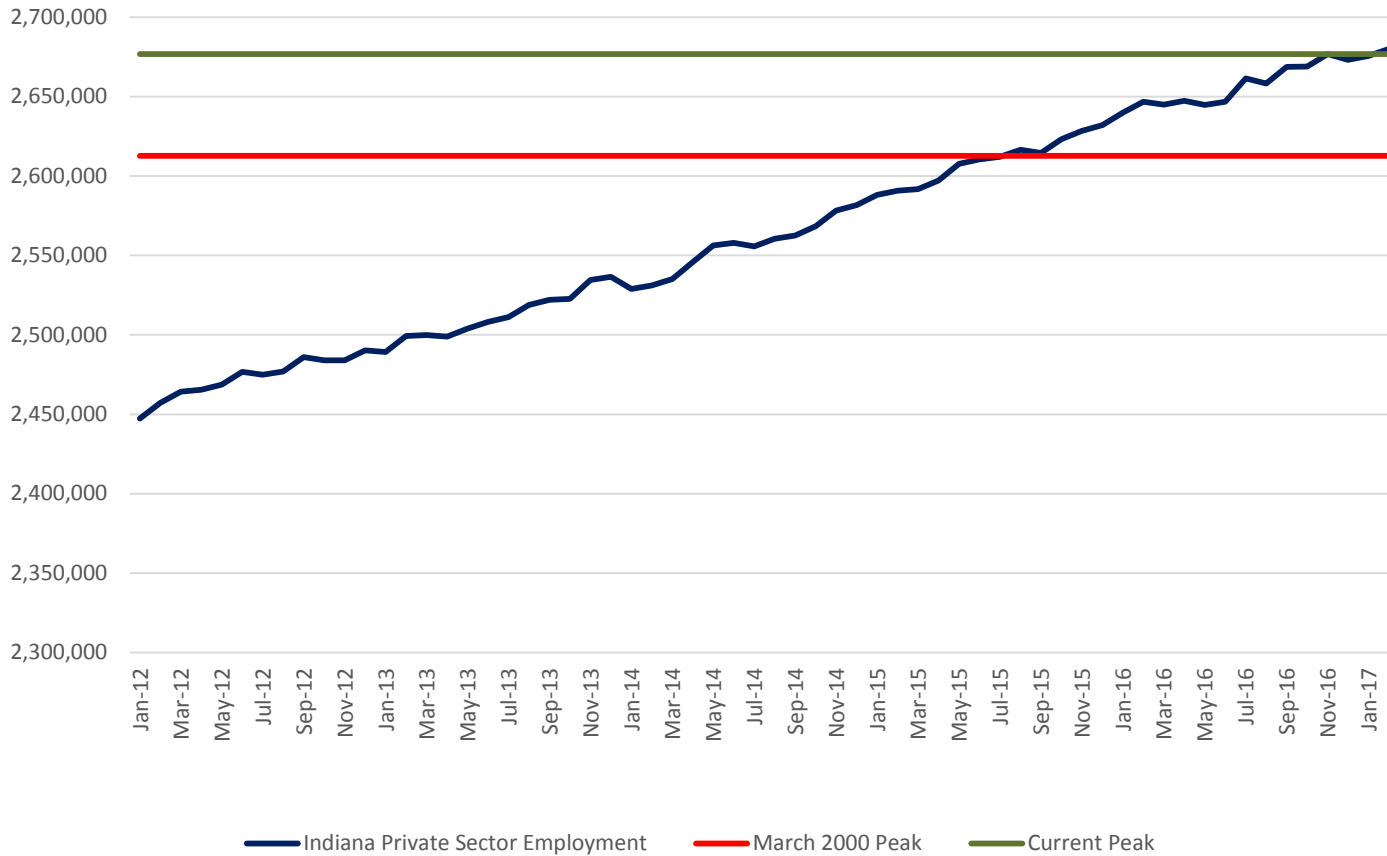
Indiana Private Sector Employment





The preliminary February total private employment is 2,680,000 making it the new peak by 3,100 over December 2016, pending March revisions.

Indiana Private Sector Employment





February Indiana private sector employment increased by 4,400 jobs over the month and is up 33,200 over the year. The monthly increase was driven by a jump in Manufacturing of 4,200, Transportation and Utilities increased 2,300.

IN Employment Change Over the Month, Year-to-Date and Over the Year (seasonally adjusted)

Industry	February 2016	December 2016	January 2017	February 2017	Month Change	Y-to-D Change	Y-to-Y Change
Private Educational & Health Services	460.3	470.0	470.5	471.1	0.6	1.1	10.8
.....Private Educational Services	69.3	71.3	70.5	72.6	2.1	1.3	3.3
.....Health Care & Social Assistance	391.0	398.7	400.0	398.5	-1.5	-0.2	7.5
Manufacturing	521.8	526.9	527.1	531.3	4.2	4.4	9.5
Professional & Business Services	333.3	337.3	339.7	339.1	-0.6	1.8	5.8
Financial Activities	133.0	134.8	136.4	135.6	-0.8	0.8	2.6
Construction	130.6	128.8	134.8	135.1	0.3	6.3	4.5
Leisure and Hospitality	306.1	310.2	308.9	305.3	-3.6	-4.9	-0.8
Trade, Transportation & Utilities	595.8	598.4	590.8	593.1	2.3	-5.3	-2.7
.....Trade	451.1	455.2	452.2	454.5	2.3	-0.7	3.4
.....Transportation, Warehousing & Utilities	144.7	143.2	138.6	138.6	0.0	-4.6	-6.1
All Other	165.9	166.9	167.4	169.4	2.0	2.5	3.5
Total Private	2,646.8	2,673.3	2,675.6	2,680.0	4.4	6.7	33.2
Government (Includes Public Schools & Hospitals)	427.6	430.6	430.9	433.8	2.9	3.2	6.2
Total Nonfarm	3,074.4	3,103.9	3,106.5	3,113.8	7.3	9.9	39.4
United States Total Private	121,318.0	123,026.0	123,247.0	123,474.0	227.0	448.0	2,156.0



February Total Nonfarm is 96,500 over the March 2000 peak.

IN Statewide Estimates (seasonally adjusted) -- February 2017

Supersector	Private Empl. Peak March 2000	Private Empl. Trough July 2009	January 2017	February 2017	Change Since Peak	Change Since Trough	Month to Month Change
Private Educational & Health Services	330.1	411.1	470.5	471.1	141.0	60.0	0.6
.....Private Educational Services	52.2	63.3	70.5	72.6	20.4	9.3	2.1
.....Health Care & Social Assistance	277.9	347.8	400.0	398.5	120.6	50.7	-1.5
Manufacturing	670.1	426.9	527.1	531.3	-138.8	104.4	4.2
Professional & Business Services	261.6	256.9	339.7	339.1	77.5	82.2	-0.6
Financial Activities	145.7	130.7	136.4	135.6	-10.1	4.9	-0.8
Construction	154.1	116.5	134.8	135.1	-19.0	18.6	0.3
Leisure and Hospitality	267.2	276.8	308.9	305.3	38.1	28.5	-3.6
Trade, Transportation & Utilities	617.5	545.7	590.8	593.1	-24.4	47.4	2.3
.....Trade	485.1	421.6	452.2	454.5	-30.6	32.9	2.3
.....Transportation, Warehousing & Utilities	132.4	124.1	138.6	138.6	6.2	14.5	0.0
All Other	166.4	158.6	167.4	169.4	3.0	10.8	2.0
Total Private	2,612.7	2,323.2	2,675.6	2,680.0	67.3	356.8	4.4
Government (Includes Public Schools & Hospitals)	404.6	434.5	430.9	433.8	29.2	-0.7	2.9
Total Nonfarm	3,017.3	2,757.7	3,106.5	3,113.8	96.5	356.1	7.3
United States Total Private	110,875.0	108,171.0	123,247.0	123,474.0	12,599.0	15,303.0	227.0

Source: Current Employment Statistics, seasonally adjusted



Indiana job growth over the month continued to trail the National trend in private sector gains in February. Private Educational Services, Manufacturing and Construction are growing faster than the US over the year.

IN Employment Change Compared to the U.S.

Industry	Indiana Month to Month	U.S. Month to Month	Indiana vs U.S. Change	Indiana Year-to-Date	U.S. Year-to-Date	Indiana vs U.S. Change	Indiana Year-to-Year	U.S. Year-to-Year	Indiana vs U.S. Change
Private Educational & Health Services	0.1%	0.3%	UNDER	0.2%	0.4%	UNDER	2.3%	2.4%	UNDER
.....Private Educational Services	3.0%	0.8%	OVER	1.8%	0.7%	OVER	4.8%	3.0%	OVER
.....Health Care & Social Assistance	-0.4%	0.2%	UNDER	-0.1%	0.3%	UNDER	1.9%	2.3%	UNDER
Manufacturing	0.8%	0.2%	OVER	0.8%	0.3%	OVER	1.8%	0.1%	OVER
Professional & Business Services	-0.2%	0.2%	UNDER	0.5%	0.4%	OVER	1.7%	3.0%	UNDER
Financial Activities	-0.6%	0.1%	UNDER	0.6%	0.5%	OVER	2.0%	2.3%	UNDER
Construction	0.2%	0.9%	UNDER	4.9%	1.4%	OVER	3.4%	3.3%	OVER
Leisure and Hospitality	-1.2%	0.2%	UNDER	-1.6%	0.3%	UNDER	-0.3%	2.0%	UNDER
Trade, Transportation & Utilities	0.4%	0.0%	OVER	-0.9%	0.1%	UNDER	-0.5%	1.0%	UNDER
.....Trade	0.5%	-0.1%	OVER	-0.2%	0.1%	UNDER	0.8%	0.8%	UNDER
.....Transportation, Warehousing & Utils	0.0%	0.2%	UNDER	-3.2%	0.0%	UNDER	-4.2%	1.8%	UNDER
All Other	1.2%	0.2%	OVER	1.5%	0.3%	OVER	2.1%	0.1%	OVER
Total Private	0.2%	0.2%	UNDER	0.3%	0.4%	UNDER	1.3%	1.8%	UNDER
Government (Includes Public Schools & Hospitals)	0.7%	0.0%	OVER	0.7%	0.1%	OVER	1.4%	0.9%	OVER
Total Nonfarm	0.2%	0.2%	OVER	0.3%	0.3%	UNDER	1.3%	1.6%	UNDER

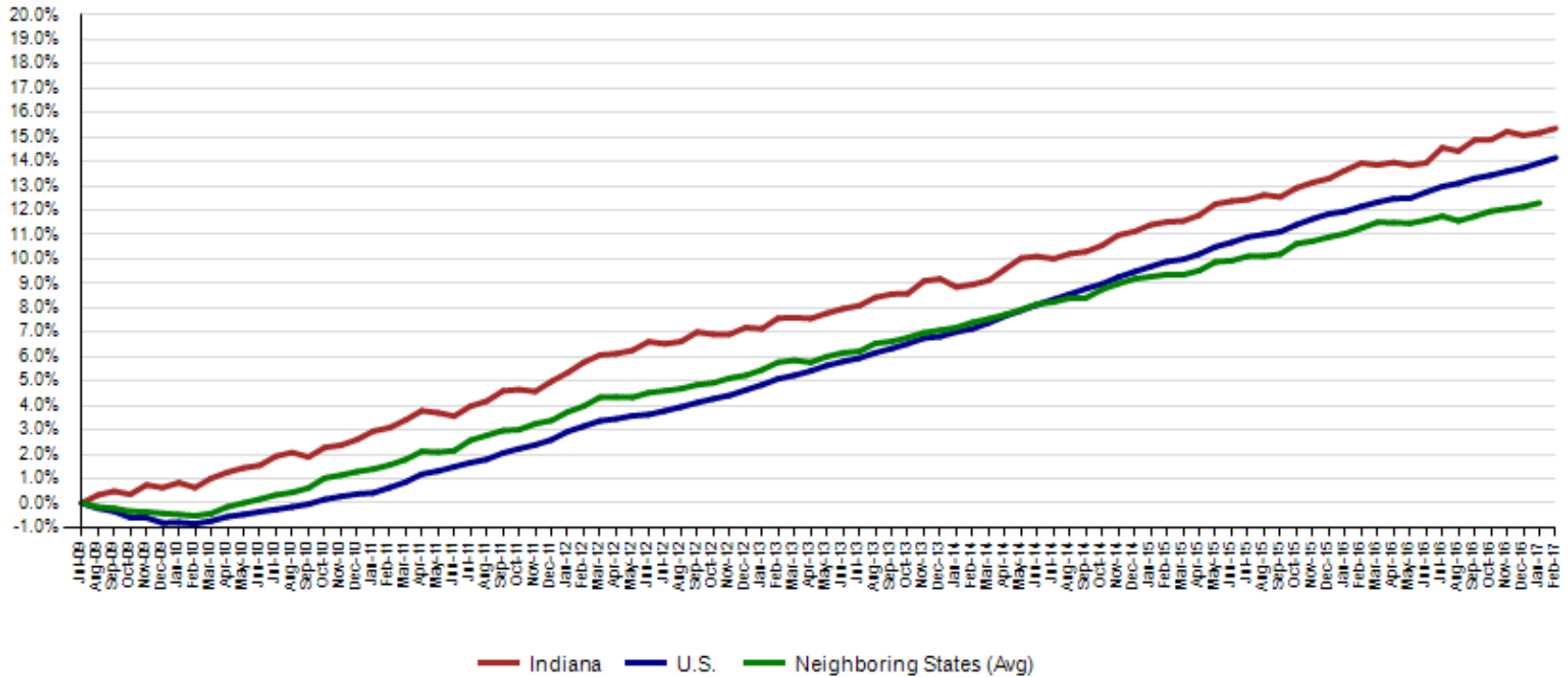


CES February Total Non Farm preliminary estimates were revised up by 2,600. The change from December to January is now a decrease of 1,200.

Revisions to January 2017 Estimates						
INDUSTRY TITLE	Dec	Jan Prel	Jan Rev	Revision	Chg from Dec	Prel Chg from Dec
Total Nonfarm	3103.9	3102.7	3106.5	3.8	2.6	-1.2
Total Private	2673.3	2671.1	2675.6	4.5	2.3	-2.2
Goods Producing	661.9	667.4	668.2	0.8	6.3	5.5
Service-Providing	2442	2435.3	2438.3	3.0	-3.7	-6.7
Private Service Providing	2011.4	2003.7	2007.4	3.7	-4.0	-7.7
Construction	128.8	134.9	134.8	-0.1	6.0	6.1
Manufacturing	526.9	526.2	527.1	0.9	0.2	-0.7
Trade, Transportation, and Utilities	598.4	592.0	590.8	-1.2	-7.6	-6.4
Wholesale Trade	119.2	117.9	117.7	-0.2	-1.5	-1.3
Retail Trade	336.0	334.2	334.5	0.3	-1.5	-1.8
Transportation, Warehousing, and Utilities	143.2	139.9	138.6	-1.3	-4.6	-3.3
Information	31.9	32.4	32.5	0.1	0.6	0.5
Financial Activities	134.8	136.1	136.4	0.3	1.6	1.3
Finance and Insurance	100.1	101.1	101.2	0.1	1.1	1.0
Real Estate and Rental and Leasing	34.7	35.0	35.2	0.2	0.5	0.3
Professional and Business Services	337.3	335.8	339.7	3.9	2.4	-1.5
Professional, Scientific, and Technical Services	115.3	114.4	114.6	0.2	-0.7	-0.9
Management of Companies and Enterprises	34.5	34.6	34.6	0.0	0.1	0.1
Admin & Support & Waste Mgmt & Remediation Services	187.5	186.8	190.5	3.7	3.0	-0.7
Education and Health Services	470.0	470.5	470.5	0.0	0.5	0.5
Educational Services	71.3	70.2	70.5	0.3	-0.8	-1.1
Health Care and Social Assistance	398.7	400.3	400.0	-0.3	1.3	1.6
Leisure and Hospitality	310.2	308.3	308.9	0.6	-1.3	-1.9
Other Services	128.8	128.6	128.6	0.0	-0.2	-0.2
Government	430.6	431.6	430.9	-0.7	0.3	1.0

Since the low point of employment in July 2009, private sector employment growth in Indiana has surpassed the U.S. (15.4% vs. 14.1%).

Private Sector Job Growth Since the Low Point of Employment in Indiana

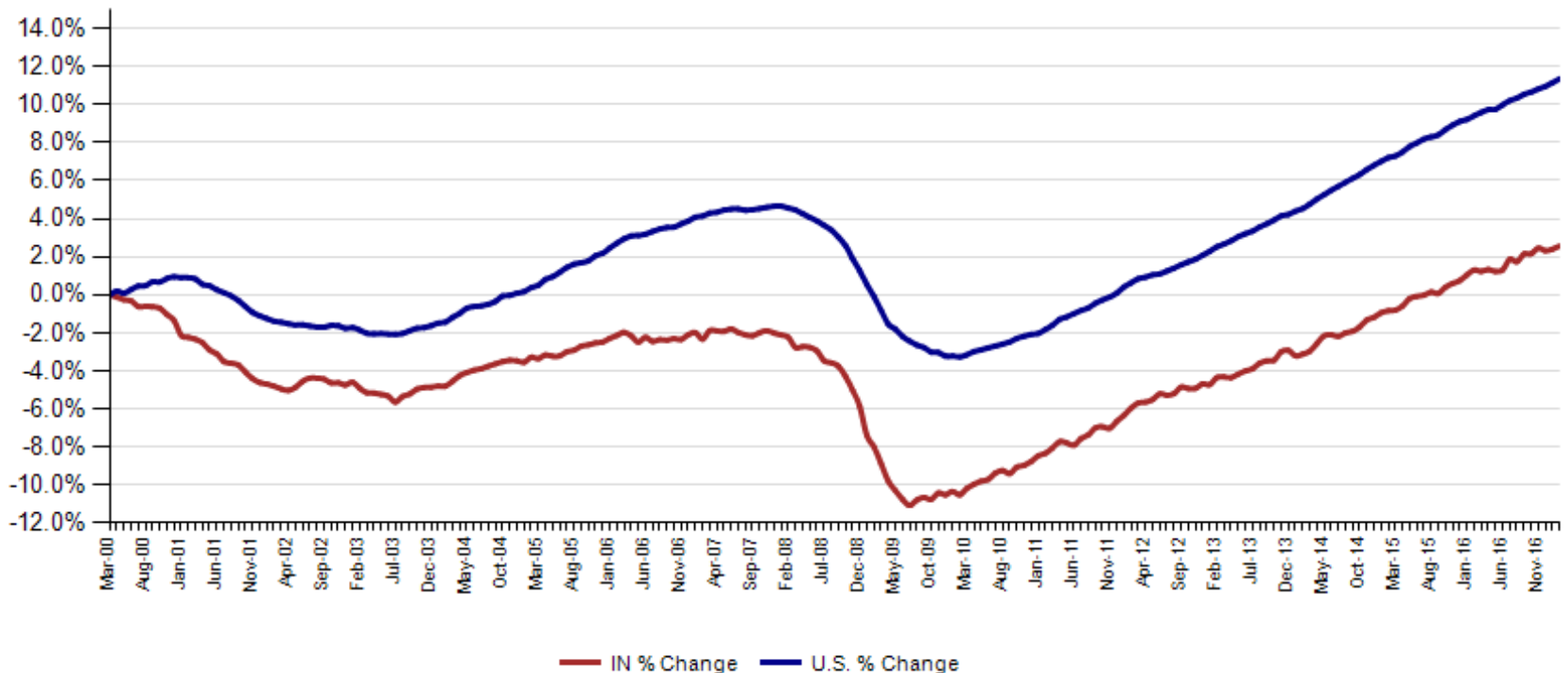


Source: Current Employment Statistics, seasonally adjusted



Since Indiana's high point of employment (March 2000), private sector employment growth in Indiana has lagged the U.S. (2.6% growth vs. 11.4% nationally).

Private Sector Job Growth Since the Peak of Employment in Indiana

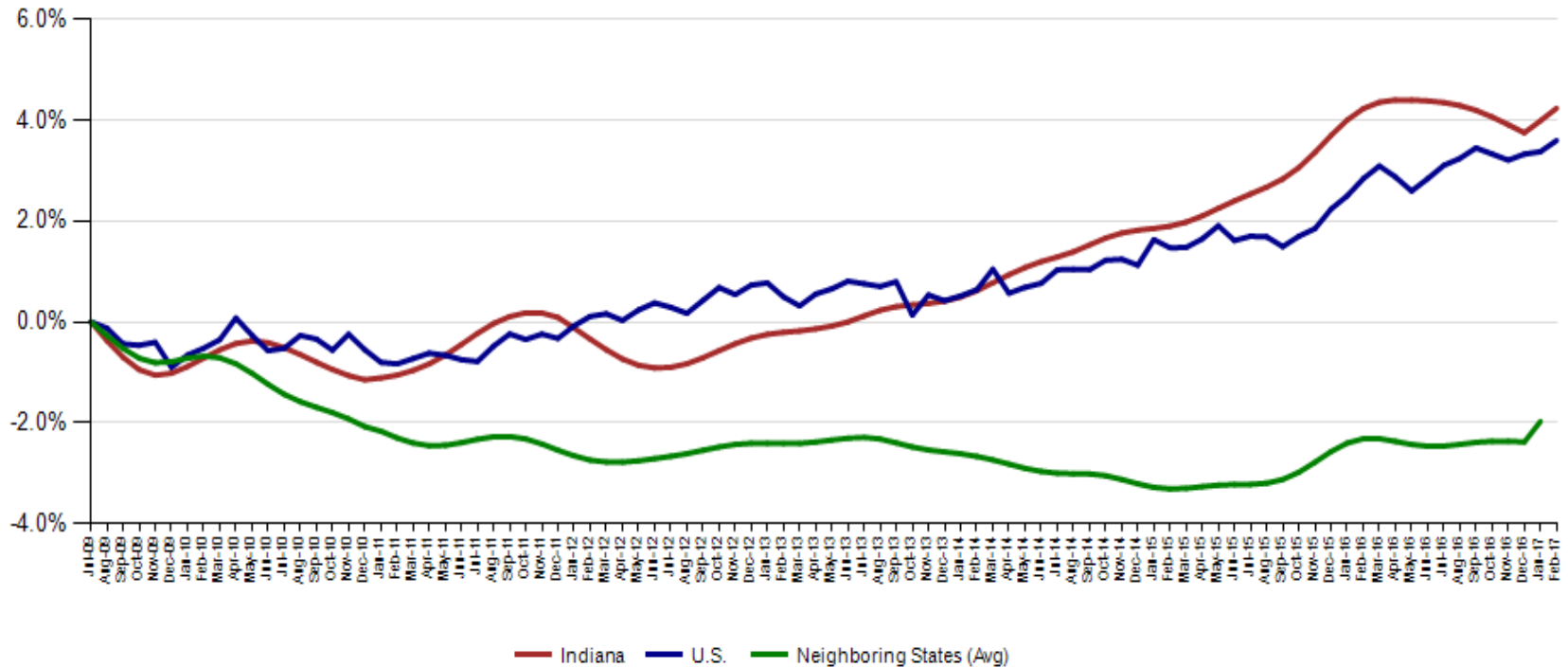


Source: Current Employment Statistics, seasonally adjusted



Indiana's February Seasonally Adjusted Labor Force is now at 3,323,680 and the number of employed is at 3,188,574. An estimated 135,106 individuals are currently unemployed and seeking employment. The preliminary February number of employed is a new high for Indiana.

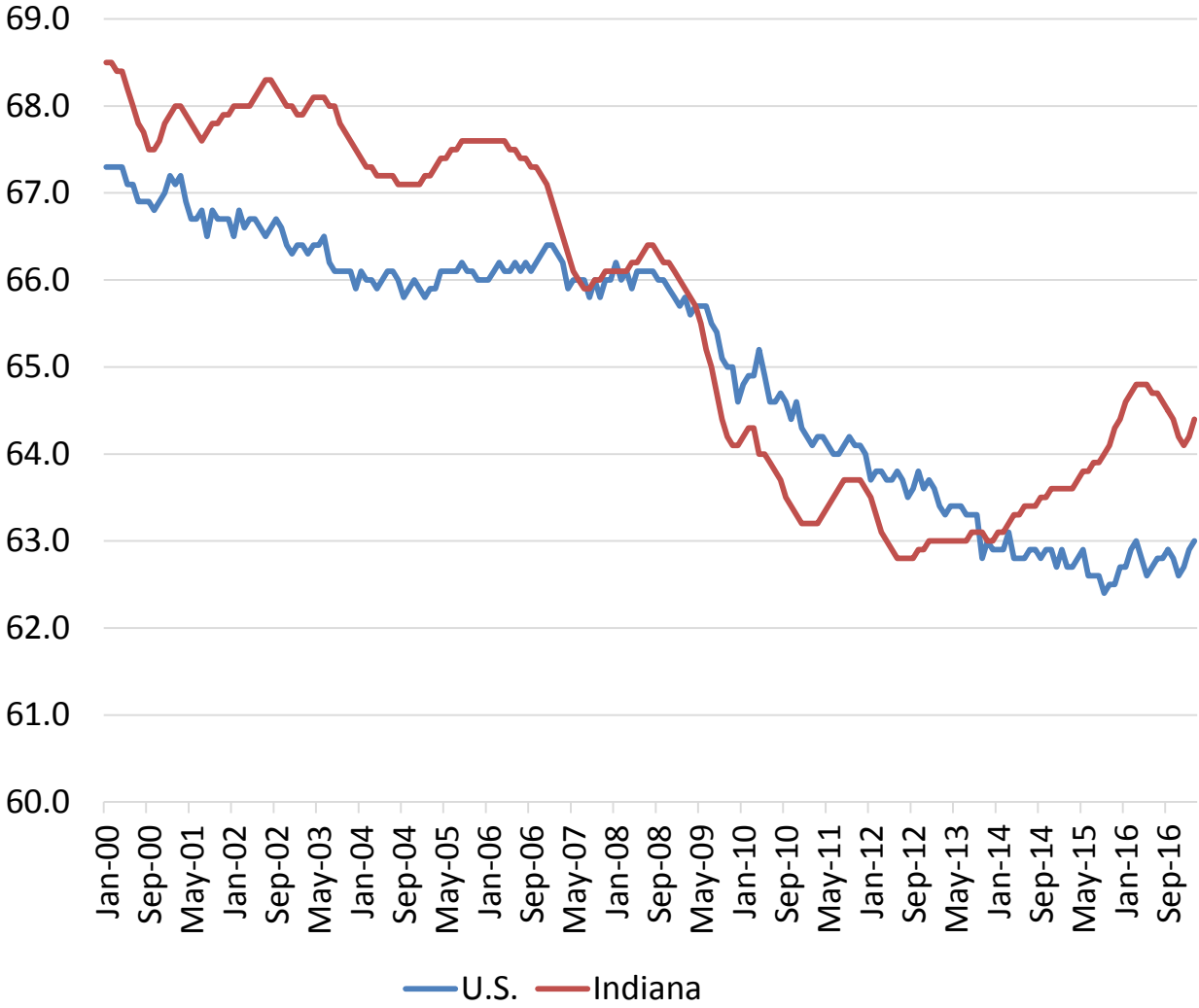
Labor Force Change Since July 2009 Indiana Trough (seasonally adjusted)





**The February Indiana Labor Force Participation rate is now 64.4
and the U.S. Rate is now at 63.0%**

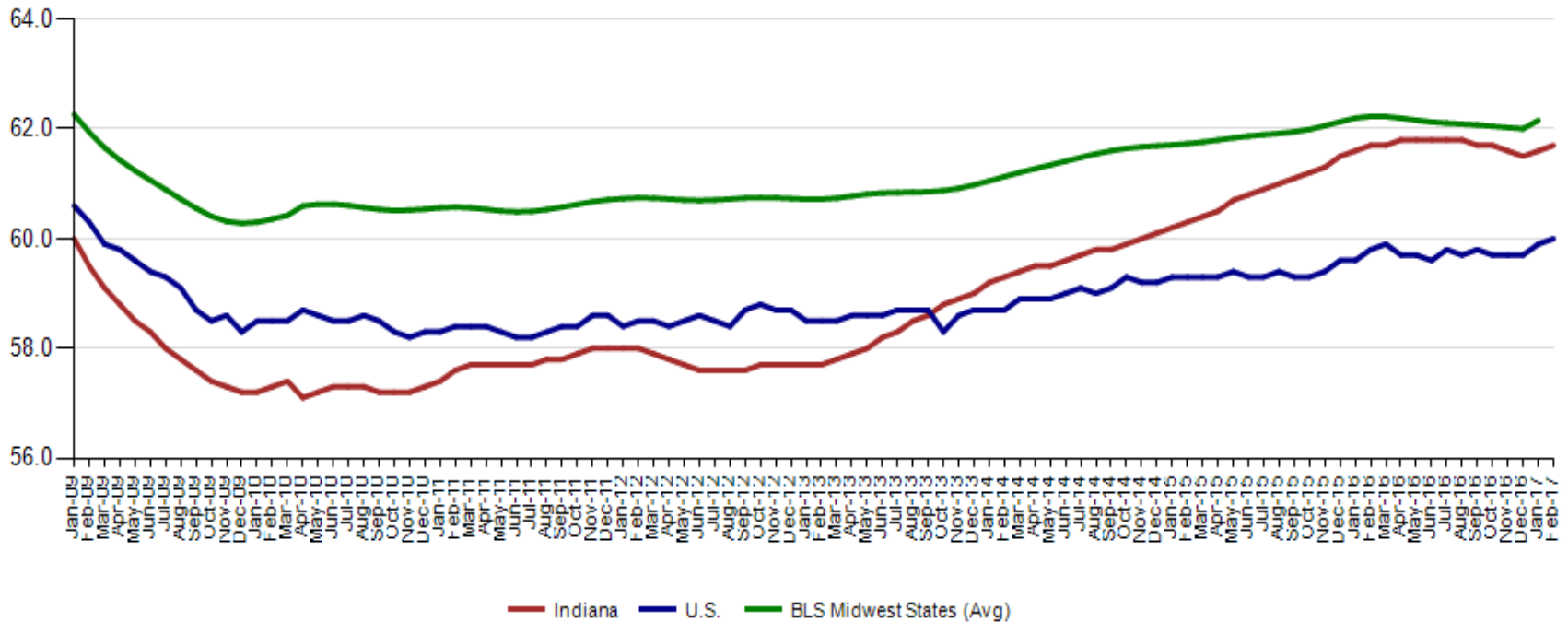
Labor Force Participation Rate



Confidential & Deliberative

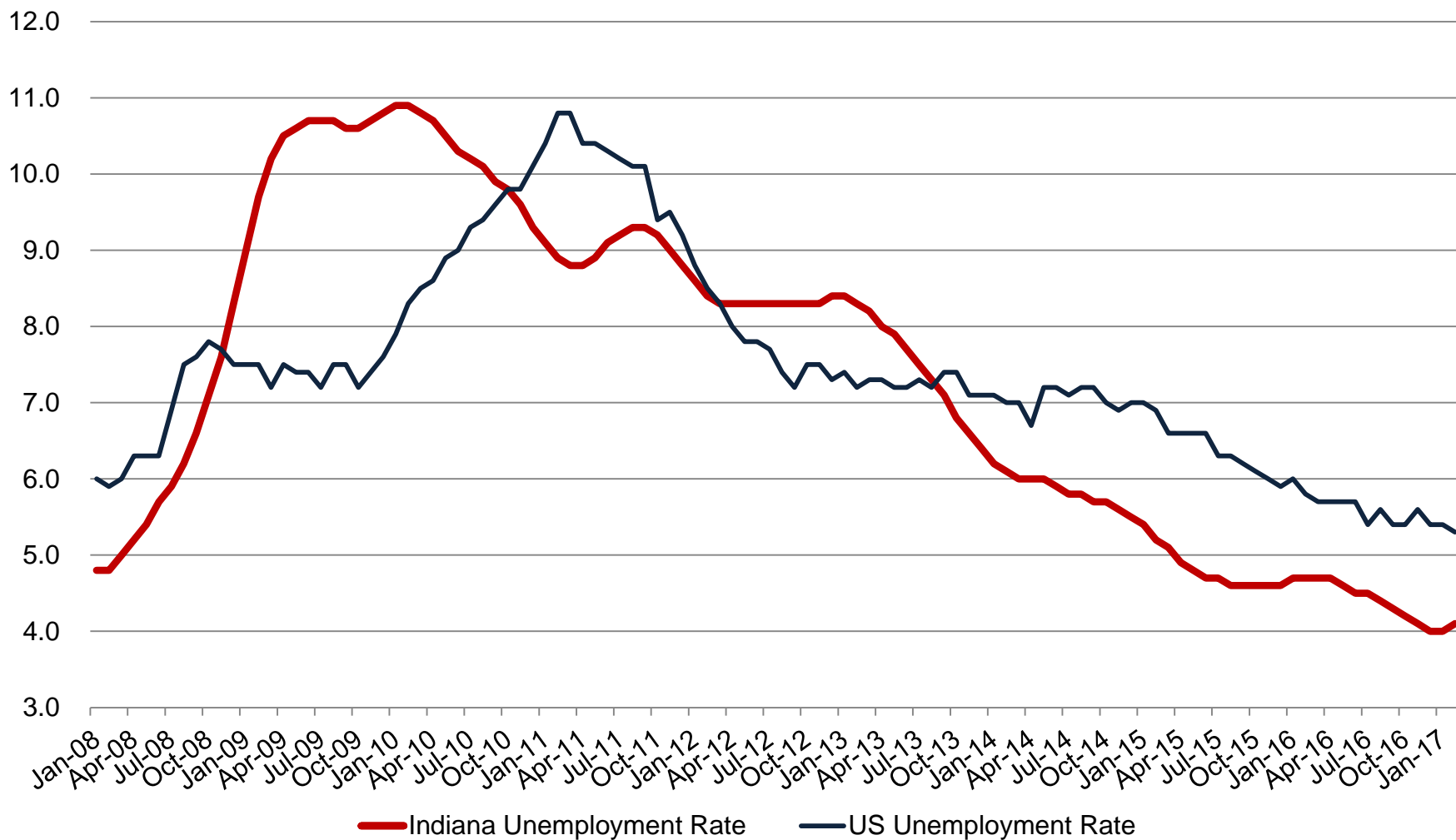
Indiana's Employment to Population February 2017 rate is 61.7% The February U.S. Employment to Population Ratio is 60% The BLS Midwest Regional States held at 62.2% (January 2016).

Employment to Population Ratio (seasonally adjusted)





Indiana and U.S. Seasonally Adjusted Unemployment Rate





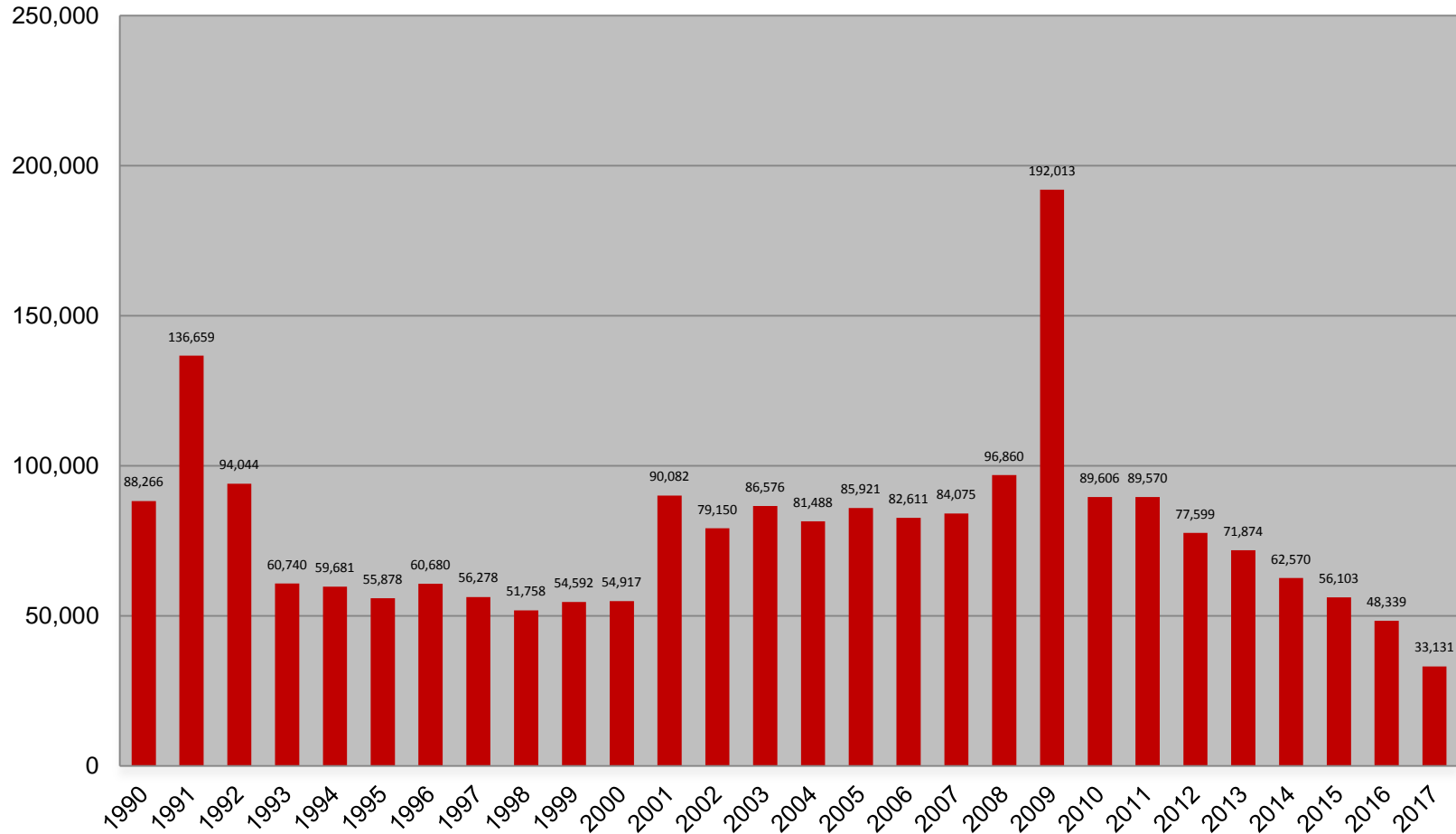
Midwest Comparison Rates: Seasonally Adjusted Over the Year and Over the Month (confidential and preliminary)

	February 2016	January 2017	February 2017	Monthly change	Yearly change
Indiana	4.7%	4.0%	4.1%	0.1%	-0.6%
U.S.	4.9%	4.8%	4.7%	-0.1%	-0.2%
Illinois	6.1%	5.7%		-5.7%	-6.1%
Kentucky	5.2%	5.0%		-5.0%	-5.2%
Michigan	5.0%	5.2%	5.3%	0.1%	0.3%
Ohio	5.0%	5.0%	5.1%	0.1%	0.1%

*2016 Benchmark



Weekly Initial Claims – Week 10





Regular UI Claims – Reference Week (12th of the month) Input to LAUS Unemployment Rate Model

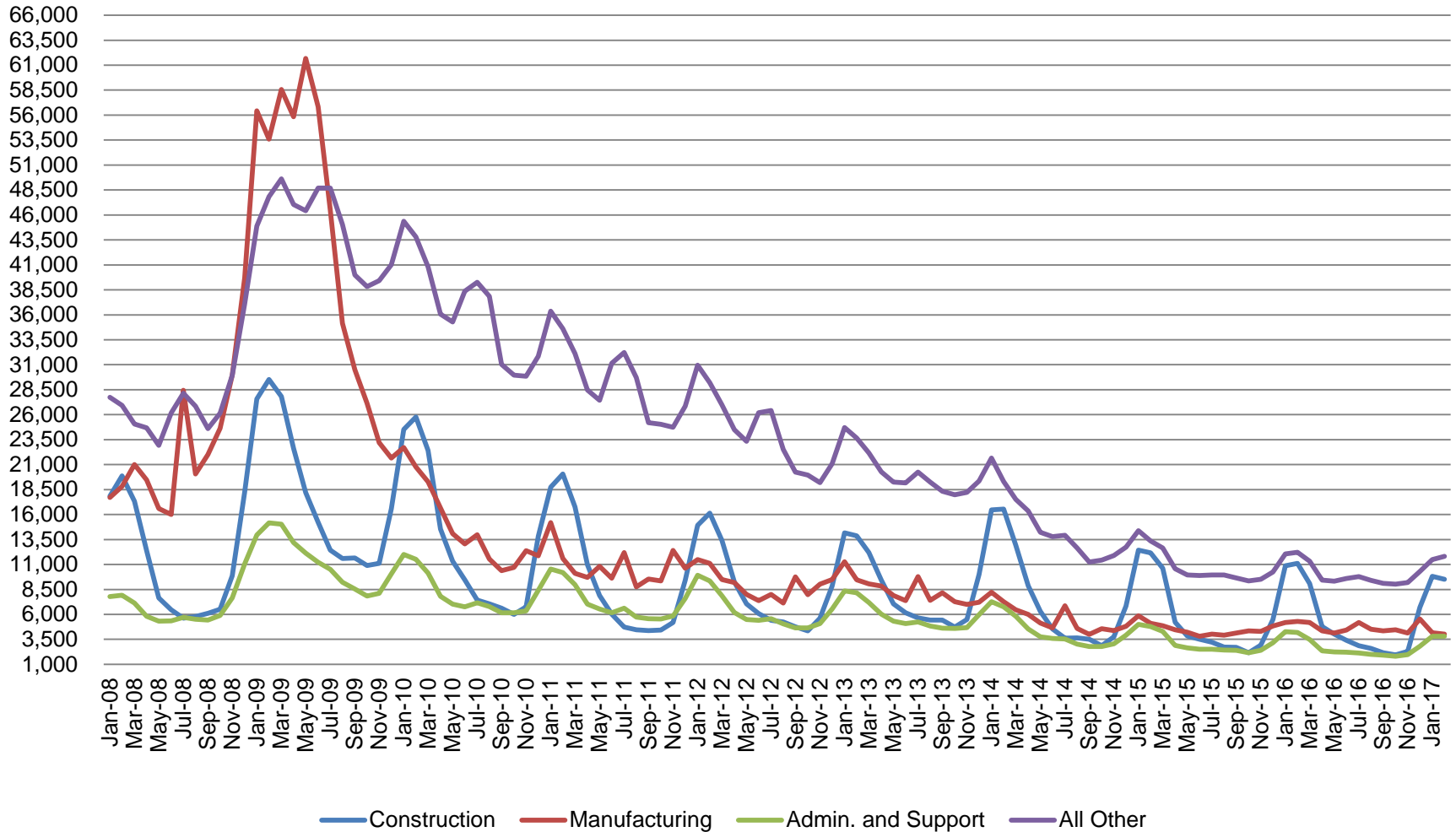
Without earnings – Reference week claims

	2006	2007	2008	2009	2010	2011	2012	2013	2014	2015	2016	2017	OTM Change	OTY Change
JANUARY	65,898	71,296	75,294	150,888	105,910	84,706	71,042	63,223	49,377	41,333	36,555	33,137	8,538	(3,418)
FEBRUARY	67,347	75,432	78,068	154,388	103,432	80,852	69,570	60,183	52,316	39,282	36,909	31,935	(1,202)	(4,974)
MARCH	59,716	64,936	74,759	157,257	93,469	71,696	60,752	54,578	45,928	35,755	32,439			
APRIL	48,103	53,325	64,948	143,842	74,481	59,036	51,652	48,548	39,717	25,597	23,895			
MAY	46,779	46,002	55,480	141,174	66,779	54,680	46,328	42,997	32,460	22,807	22,300			
JUNE	45,533	46,350	57,228	136,670	67,996	55,021	46,820	41,722	29,524	22,030	22,025			
JULY	53,424	51,141	72,032	121,336	69,447	58,031	47,268	44,597	30,845	22,341	22,326			
AUGUST	45,021	43,887	61,985	103,509	62,976	51,710	42,134	39,998	26,061	21,472	20,737			
SEPTEMBER	41,247	42,500	61,548	92,680	58,280	46,824	41,955	39,563	23,685	20,941	19,372			
OCTOBER	42,487	42,313	67,306	86,275	58,317	46,909	39,467	37,778	23,768	19,917	19,143			
NOVEMBER	43,868	45,362	81,466	82,451	58,846	51,201	41,018	38,517	25,315	21,199	19,547			
DECEMBER	53,566	54,201	109,651	91,814	65,279	55,104	46,371	42,484	30,982	26,249	24,599			



Regular UI Claims by Industry

For the Reference Week of Each Month



Source: ETA
2012

Confidential & Deliberative



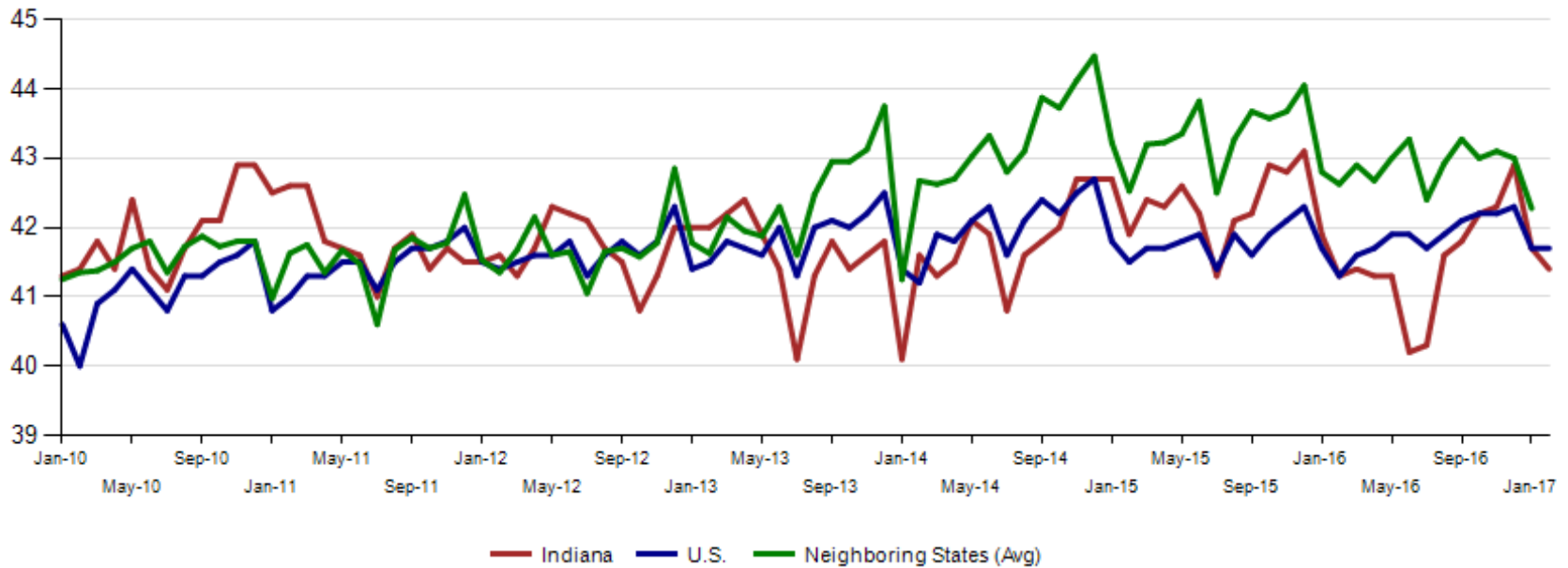
Internal and External Indiana Career Connect job orders are 64,753 in February. Health Care & Social Services, Administrative & Support & Waste Management & Remediation Services (this includes temp help services) and Retail Trade top this list.

NAICS_title	Feb-2017	Prior Year			Current Year			Change over Prior Year			Current Year Including External			Current Duration (days)
		December	January	February	December	January	February	December	January	February	December	January	February	February
Total		7,246	8,346	9,177	8,113	10,401	10,087	12%	25%	10%	51,993	62,754	64,753	49
Health Care and Social Services		1,854	1,893	1,832	1,845	2,676	2,188	0%	41%	19%	9,495	12,823	11,051	36
Admin. & Support & Waste Mgt. & Rem. Services		926	1,221	1,258	1,096	1,196	1,185	18%	-2%	-6%	7,066	9,362	9,777	49
Retail Trade		715	701	694	691	781	556	-3%	11%	-20%	8,942	9,179	7,877	44
Accommodation and Food Services		192	143	178	230	563	860	20%	294%	383%	3,177	5,243	5,714	31
Professional, Scientific, and Technical Services		466	615	733	570	832	929	22%	35%	27%	2,818	3,206	5,171	60
Manufacturing		1,309	1,621	1,656	1,337	1,833	1,711	2%	13%	3%	3,330	4,278	4,308	51
Transportation & Warehousing		363	464	345	404	398	378	11%	-14%	10%	4,506	3,435	4,260	82
Finance and Insurance		198	254	209	246	219	224	24%	-14%	7%	2,643	2,549	2,766	84
Educational Services		126	98	848	602	534	549	378%	445%	-35%	2,280	2,480	2,580	23
Public Administration		146	211	157	83	132	180	-43%	-37%	15%	1,499	1,873	2,430	95
Real Estate and Rental and Leasing		85	93	101	89	112	168	5%	20%	66%	808	1,847	2,220	56
Wholesale Trade		322	330	342	344	437	412	7%	32%	20%	1,786	1,995	2,072	34
Information		205	219	229	139	233	234	-32%	6%	2%	1,178	1,610	1,375	37
Management of Companies and Enterprises		19	32	26	11	6	7	-42%	-81%	-73%	556	779	1,126	217
Other Services(Except Public Administration)		124	151	163	192	179	196	55%	19%	20%	911	921	941	122
Construction		99	155	207	101	144	157	2%	-7%	-24%	476	650	605	84
Utilities		56	93	80	69	65	64	23%	-30%	-20%	248	253	219	46
Arts, Entertainment, and Recreation		12	17	41	18	24	19	50%	41%	-54%	177	174	121	45
Agriculture, Forestry, Fishing and Hunting		14	21	34	17	21	44	21%	0%	29%	44	55	85	67
Mining		6	3	34	13	7	9	117%	133%	-74%	37	33	38	38



February 2017 average weekly hours for Indiana manufacturing production decreased to 41.4 and are now behind the national manufacturing weekly hours of 41.7. Neighboring states were at 42.3 hours (January data).

Avg. Weekly Manufacturing Production Hours (non seasonally adjusted)





Current Employment Statistics (CES) compared to Local Area Unemployment Statistics (LAUS)

LAUS (Labor Force by Residence)

- An estimate of employment based on where the employee lives, rather than where they work
- This is a count of people not jobs
- Used in calculating the labor force

CES (Employment by Job)

- An estimate or count of employment based on the location of the job regardless of the worker's residence
- Also called nonag wage and salary or nonfarm employment
- This counts jobs, not people
- Used in Quarterly Census of Employment and Wages (QCEW) , Occupational Employment Statistics (OES) and CES data