



INDIANA  
**WORKFORCE**  
DEVELOPMENT  
AND ITS **WorkOne** CENTERS

# Indiana's Employment and Labor Force Estimates February 2015

*03/24/2015*



# Key Points

- Indiana's **February seasonally adjusted unemployment rate declined by 0.1 to 5.9%**. Indiana's rate is down (-0.2%) from February 2014. The national rate was 5.5% in February.
- Indiana's **Labor Force declined by 3,300 in February**, driven entirely by a drop in unemployment. This marks the first month since July 2012 in which Indiana has seen even a modest Labor Force Decline. Indiana's Labor Force Participation rate declined by 0.1 to 63.8% yet remains 1.0% above the US Labor Force Participation rate which was 62.8% in February.
- Indiana's Labor Force is up by 52,000 over the year, and is up by 82,000 since January 2013. Indiana's Labor Force stands at 3,264,438. Indiana's unemployment is down by 72,127 since January of 2013. This is a decline of 27%.
- Indiana's **private sector grew by 1,700 jobs** (0.1%) in February. US Private employment grew by 288,000 over the month, a rate of (0.2%).
- **Indiana Private sector employment is up 55,700 from a year ago**, February 2014. This is an annual growth of (2.2%).
- Since January 2013 Indiana's private employment has grown by 98,700 (4.0%).



## IN Employment Change Over the Month, Year-to-Date and Over the Year (seasonally adjusted)

| Industry   | February 2014 | December 2014 | January 2015 | February 2015 | Month Change | Y-to-D Change | Y-to-Y Change |
|--|---------------|---------------|--------------|---------------|--------------|---------------|---------------|
| Private Educational & Health Services            | 436.4         | 441.5         | 443.5        | 446.0         | 2.5          | 4.5           | 9.6           |
| .....Private Educational Services                | 64.1          | 65.5          | 64.6         | 65.7          | 1.1          | 0.2           | 1.6           |
| .....Health Care & Social Assistance             | 372.3         | 376.0         | 378.9        | 380.3         | 1.4          | 4.3           | 8.0           |
| Manufacturing                                    | 501.9         | 514.6         | 515.7        | 516.3         | 0.6          | 1.7           | 14.4          |
| Professional & Business Services                 | 317.4         | 328.2         | 327.7        | 325.7         | -2.0         | -2.5          | 8.3           |
| Financial Activities                             | 127.7         | 130.9         | 131.1        | 130.6         | -0.5         | -0.3          | 2.9           |
| Construction                                     | 122.2         | 122.9         | 120.2        | 120.7         | 0.5          | -2.2          | -1.5          |
| Leisure and Hospitality                          | 290.6         | 295.0         | 294.3        | 296.5         | 2.2          | 1.5           | 5.9           |
| Trade, Transportation & Utilities                | 572.5         | 581.5         | 587.2        | 586.2         | -1.0         | 4.7           | 13.7          |
| .....Trade                                       | 435.6         | 440.1         | 442.6        | 441.3         | -1.3         | 1.2           | 5.7           |
| .....Transportation, Warehousing & Utilities     | 136.9         | 141.4         | 144.6        | 144.9         | 0.3          | 3.5           | 8.0           |
| All Other  | 167.2         | 168.3         | 170.2        | 169.6         | -0.6         | 1.3           | 2.4           |
|  |               |               |              |               |              |               |               |
| Total Private                                    | 2,535.9       | 2,582.9       | 2,589.9      | 2,591.6       | 1.7          | 8.7           | 55.7          |
| Government (Includes Public Schools & Hospitals) | 426.4         | 429.2         | 426.2        | 428.7         | 2.5          | -0.5          | 2.3           |
| Total Nonfarm                                    | 2,962.3       | 3,012.1       | 3,016.1      | 3,020.3       | 4.2          | 8.2           | 58.0          |
|  |               |               |              |               |              |               |               |
| United States Total Private                      | 116,006.0     | 118,690.0     | 118,927.0    | 119,215.0     | 288.0        | 525.0         | 3,209.0       |



## IN Statewide Estimates (seasonally adjusted) -- February 2015

| Supersector                                      | Private Empl. Peak March 2000 | Private Empl. Trough July 2009 | January 2015 | February 2015 | Change Since Peak | Change Since Trough | Month to Month Change |
|--|-------------------------------|--------------------------------|--------------|---------------|-------------------|---------------------|-----------------------|
| Private Educational & Health Services            | 330.1                         | 411.1                          | 443.5        | 446.0         | 115.9             | 34.9                | 2.5                   |
| .....Private Educational Services                | 52.2                          | 63.3                           | 64.6         | 65.7          | 13.5              | 2.4                 | 1.1                   |
| .....Health Care & Social Assistance             | 277.9                         | 347.8                          | 378.9        | 380.3         | 102.4             | 32.5                | 1.4                   |
| Manufacturing                                    | 671.1                         | 427.9                          | 515.7        | 516.3         | -154.8            | 88.4                | 0.6                   |
| Professional & Business Services                 | 260.5                         | 255.9                          | 327.7        | 325.7         | 65.2              | 69.8                | -2.0                  |
| Financial Activities                             | 145.7                         | 130.7                          | 131.1        | 130.6         | -15.1             | -0.1                | -0.5                  |
| Construction                                     | 154.1                         | 116.5                          | 120.2        | 120.7         | -33.4             | 4.2                 | 0.5                   |
| Leisure and Hospitality                          | 267.2                         | 276.8                          | 294.3        | 296.5         | 29.3              | 19.7                | 2.2                   |
| Trade, Transportation & Utilities                | 617.5                         | 545.7                          | 587.2        | 586.2         | -31.3             | 40.5                | -1.0                  |
| .....Trade                                       | 485.1                         | 421.6                          | 442.6        | 441.3         | -43.8             | 19.7                | -1.3                  |
| .....Transportation, Warehousing & Utilities     | 132.4                         | 124.1                          | 144.6        | 144.9         | 12.5              | 20.8                | 0.3                   |
| All Other  | 166.4                         | 158.6                          | 170.2        | 169.6         | 3.2               | 11.0                | -0.6                  |
| Total Private                                    | 2,612.6                       | 2,323.2                        | 2,589.9      | 2,591.6       | -21.0             | 268.4               | 1.7                   |
| Government (Includes Public Schools & Hospitals) | 404.6                         | 434.5                          | 426.2        | 428.7         | 24.1              | -5.8                | 2.5                   |
| Total Nonfarm                                    | 3,017.2                       | 2,757.7                        | 3,016.1      | 3,020.3       | 3.1               | 262.6               | 4.2                   |
| United States Total Private                      | 110,873.0                     | 108,098.0                      | 118,927.0    | 119,215.0     | 8,342.0           | 11,117.0            | 288.0                 |

Source: Current Employment Statistics, seasonally adjusted



## IN Statewide Estimates (seasonally adjusted) -- February 2015

| Supersector  | Private Empl. Peak March 2000 | Private Empl. Trough July 2009 | January 2015 | February 2015 | % Chg. Since Peak | % Chg. Since Trough | % Month to Month Change |
|--|-------------------------------|--------------------------------|--------------|---------------|-------------------|---------------------|-------------------------|
| Private Educational & Health Services                    | 330.1                         | 411.1                          | 443.5        | 446.0         | 35.1%             | 8.5%                | 0.6%                    |
| ..... <i>Private Educational Services</i>                | 52.2                          | 63.3                           | 64.6         | 65.7          | 25.9%             | 3.8%                | 1.7%                    |
| ..... <i>Health Care &amp; Social Assistance</i>         | 277.9                         | 347.8                          | 378.9        | 380.3         | 36.8%             | 9.3%                | 0.4%                    |
| Manufacturing  | 671.1                         | 427.9                          | 515.7        | 516.3         | -23.1%            | 20.7%               | 0.1%                    |
| Professional & Business Services                         | 260.5                         | 255.9                          | 327.7        | 325.7         | 25.0%             | 27.3%               | -0.6%                   |
| Financial Activities                                     | 145.7                         | 130.7                          | 131.1        | 130.6         | -10.4%            | -0.1%               | -0.4%                   |
| Construction   | 154.1                         | 116.5                          | 120.2        | 120.7         | -21.7%            | 3.6%                | 0.4%                    |
| Leisure and Hospitality                                  | 267.2                         | 276.8                          | 294.3        | 296.5         | 11.0%             | 7.1%                | 0.7%                    |
| Trade, Transportation & Utilities                        | 617.5                         | 545.7                          | 587.2        | 586.2         | -5.1%             | 7.4%                | -0.2%                   |
| ..... <i>Trade</i>                                       | 485.1                         | 421.6                          | 442.6        | 441.3         | -9.0%             | 4.7%                | -0.3%                   |
| ..... <i>Transportation, Warehousing &amp; Utilities</i> | 132.4                         | 124.1                          | 144.6        | 144.9         | 9.4%              | 16.8%               | 0.2%                    |
| All Other  | 166.4                         | 158.6                          | 170.2        | 169.6         | 1.9%              | 6.9%                | -0.4%                   |
|  |                               |                                |              |               |                   |                     |                         |
| Total Private  | 2,612.6                       | 2,323.2                        | 2,589.9      | 2,591.6       | -0.8%             | 11.6%               | 0.1%                    |
| Government (Includes Public Schools & Hospitals)         | 404.6                         | 434.5                          | 426.2        | 428.7         | 6.0%              | -1.3%               | 0.6%                    |
| Total Nonfarm  | 3,017.2                       | 2,757.7                        | 3,016.1      | 3,020.3       | 0.1%              | 9.5%                | 0.1%                    |
|  |                               |                                |              |               |                   |                     |                         |
| United States Total Private                              | 110,873.0                     | 108,098.0                      | 118,927.0    | 119,215.0     | 7.5%              | 10.3%               | 0.2%                    |

Source: Current Employment Statistics, seasonally adjusted

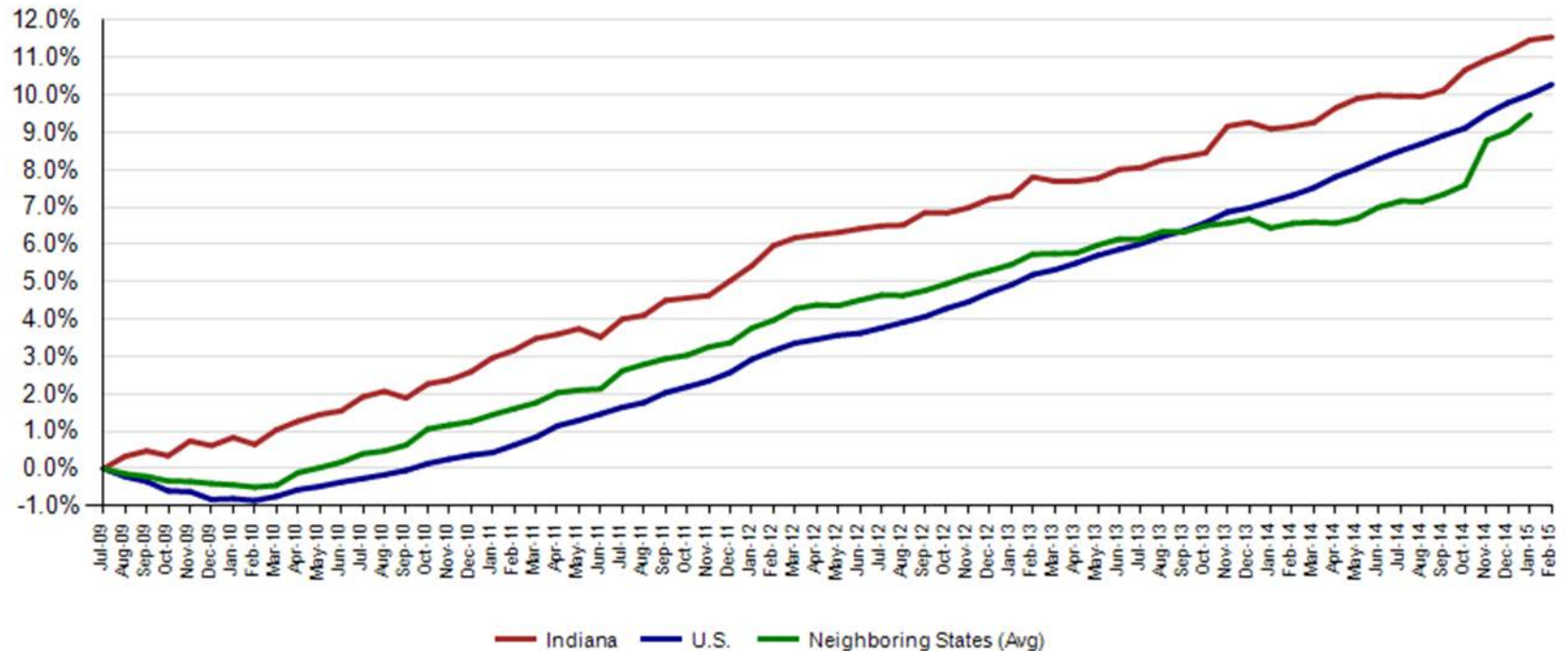


## IN Employment Change Compared to the U.S.

| Industry   | Indiana Month to Month | U.S. Month to Month | Indiana vs U.S. Change | Indiana Year-to-Date | U.S. Year-to-Date | Indiana vs U.S. Change | Indiana Year-to-Year | U.S. Year-to-Year | Indiana vs U.S. Change |
|--|------------------------|---------------------|------------------------|----------------------|-------------------|------------------------|----------------------|-------------------|------------------------|
| Private Educational & Health Services            | 0.6%                   | 0.2%                | OVER                   | 1.0%                 | 0.5%              | OVER                   | 2.2%                 | 2.5%              | UNDER                  |
| .....Private Educational Services                | 1.7%                   | 0.6%                | OVER                   | 0.3%                 | 0.4%              | UNDER                  | 2.5%                 | 1.9%              | OVER                   |
| .....Health Care & Social Assistance             | 0.4%                   | 0.2%                | OVER                   | 1.1%                 | 0.5%              | OVER                   | 2.1%                 | 2.6%              | UNDER                  |
| Manufacturing                                    | 0.1%                   | 0.1%                | OVER                   | 0.3%                 | 0.2%              | OVER                   | 2.9%                 | 1.7%              | OVER                   |
| Professional & Business Services                 | -0.6%                  | 0.3%                | UNDER                  | -0.8%                | 0.3%              | UNDER                  | 2.6%                 | 3.5%              | UNDER                  |
| Financial Activities                             | -0.4%                  | 0.1%                | UNDER                  | -0.2%                | 0.4%              | UNDER                  | 2.3%                 | 1.9%              | OVER                   |
| Construction                                     | 0.4%                   | 0.5%                | UNDER                  | -1.8%                | 1.2%              | UNDER                  | -1.2%                | 5.3%              | UNDER                  |
| Leisure and Hospitality                          | 0.7%                   | 0.4%                | OVER                   | 0.5%                 | 0.7%              | UNDER                  | 2.0%                 | 3.6%              | UNDER                  |
| Trade, Transportation & Utilities                | -0.2%                  | 0.2%                | UNDER                  | 0.8%                 | 0.4%              | OVER                   | 2.4%                 | 2.4%              | UNDER                  |
| .....Trade                                       | -0.3%                  | 0.2%                | UNDER                  | 0.3%                 | 0.4%              | UNDER                  | 1.3%                 | 2.1%              | UNDER                  |
| .....Transportation, Warehousing & Utils         | 0.2%                   | 0.4%                | UNDER                  | 2.5%                 | 0.4%              | OVER                   | 5.8%                 | 3.9%              | OVER                   |
| All Other  | -0.4%                  | 0.1%                | UNDER                  | 0.8%                 | 0.2%              | OVER                   | 1.4%                 | 1.9%              | UNDER                  |
| Total Private                                    | 0.1%                   | 0.2%                | UNDER                  | 0.3%                 | 0.4%              | UNDER                  | 2.2%                 | 2.8%              | UNDER                  |
| Government (Includes Public Schools & Hospitals) | 0.6%                   | 0.0%                | OVER                   | -0.1%                | 0.0%              | UNDER                  | 0.5%                 | 0.4%              | OVER                   |
| Total Nonfarm                                    | 0.1%                   | 0.2%                | UNDER                  | 0.3%                 | 0.4%              | UNDER                  | 2.0%                 | 2.4%              | UNDER                  |



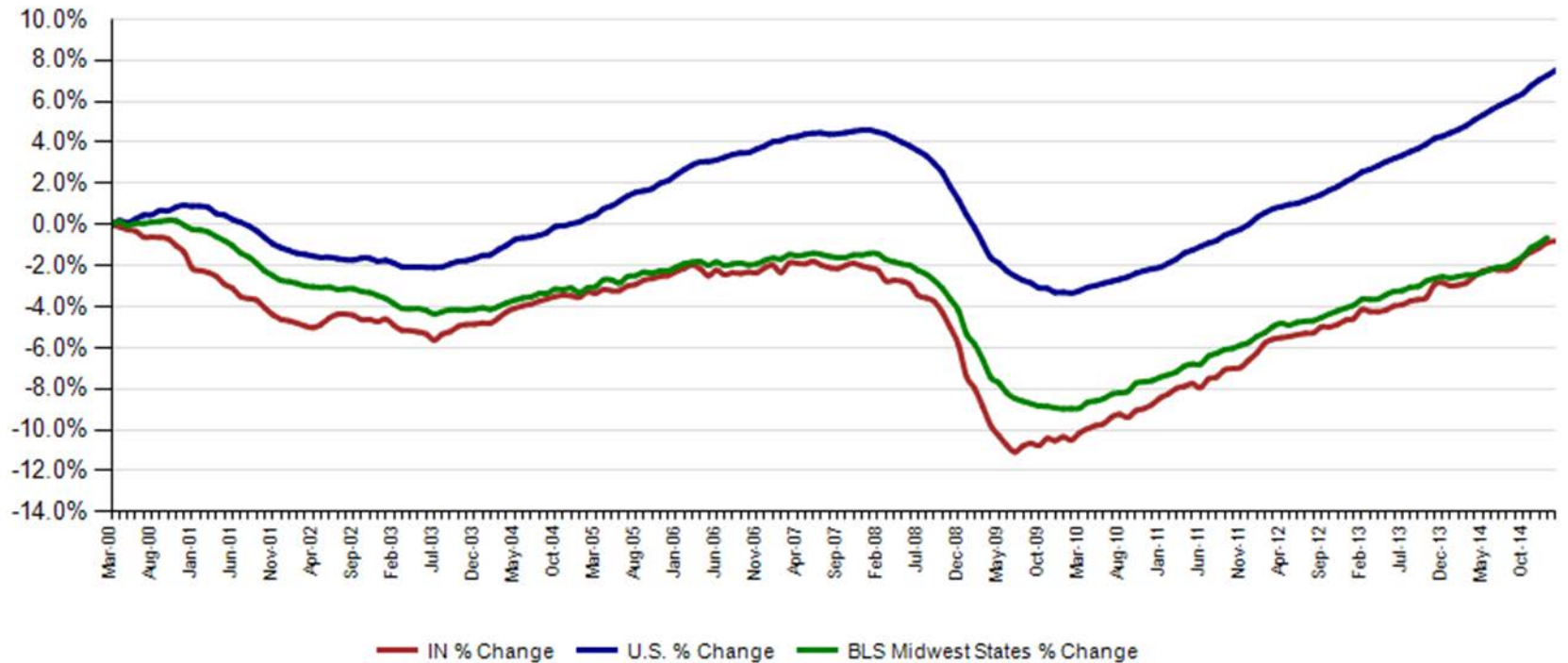
### Private Sector Job Growth Since the Low Point of Employment in Indiana



Source: Current Employment Statistics, seasonally adjusted



### Private Sector Job Growth Since the Peak of Employment in Indiana

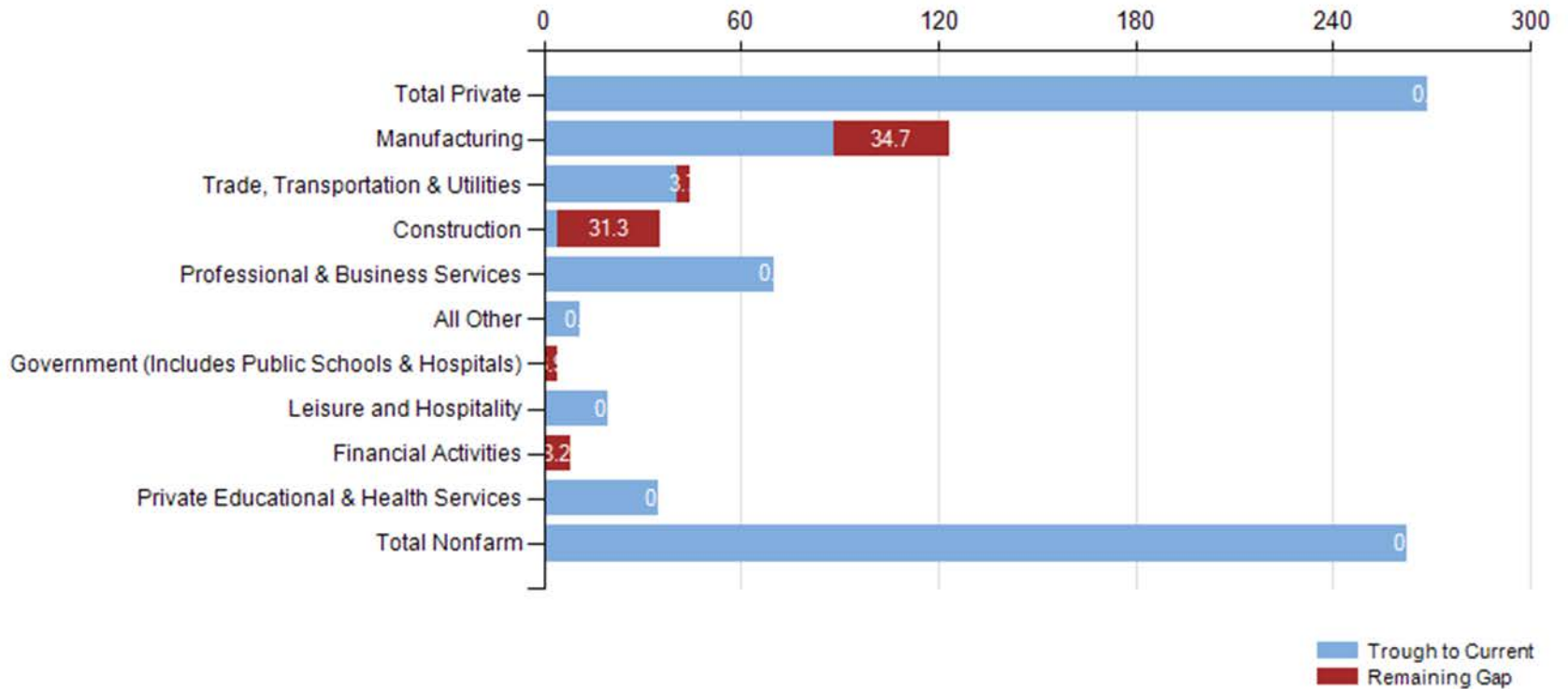


Source: Current Employment Statistics, seasonally adjusted





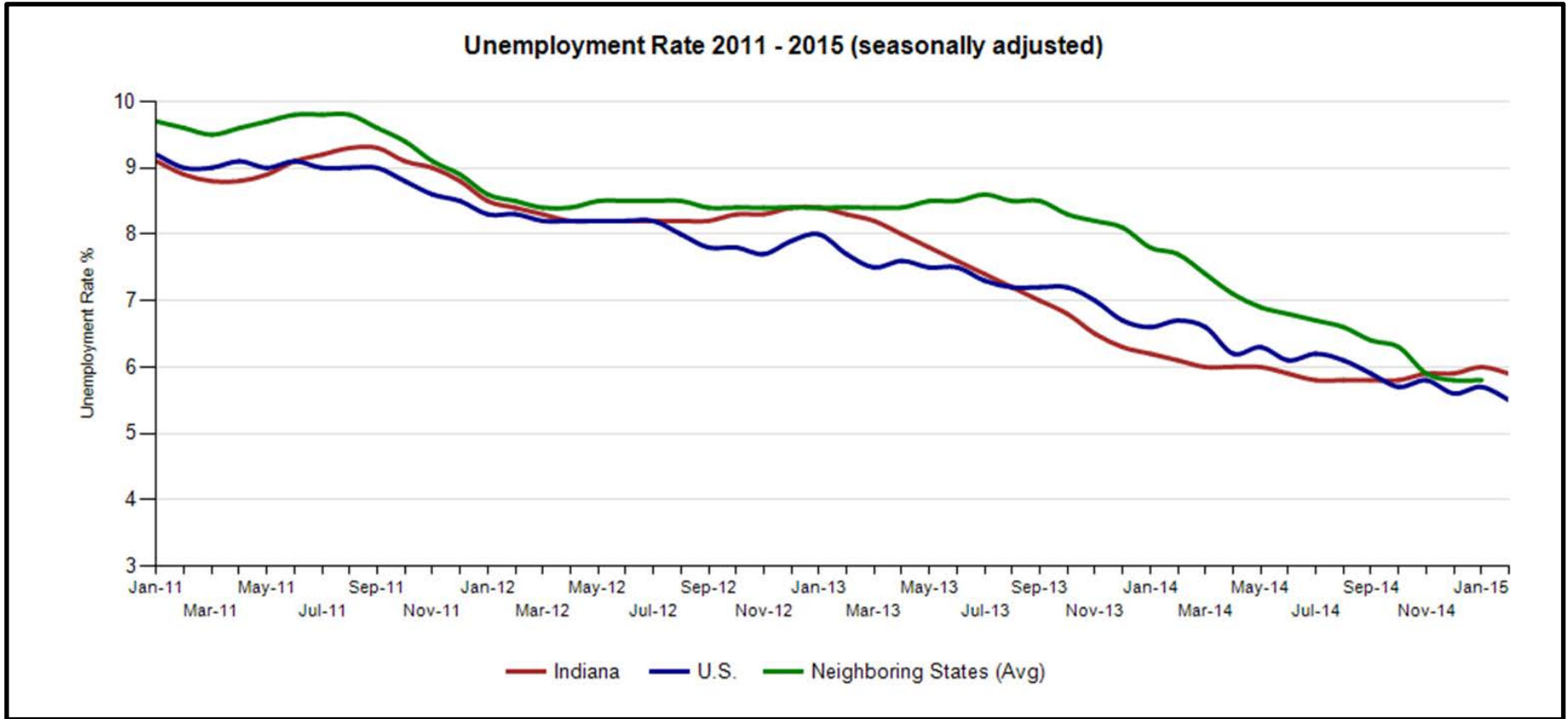
### Trough to February 2015 Employment by Supersector (seasonally adjusted)





## Midwest Comparison Rates: Seasonally Adjusted Over the Year and Over the Month (confidential and preliminary)

|          | February 2014 | January 2015 | February 2015 | Monthly change | Yearly change |
|----------|---------------|--------------|---------------|----------------|---------------|
| Indiana  | 6.1%          | 6.0%         | 5.9%          | -0.1%          | -0.2%         |
| U.S.     | 6.7%          | 5.7%         | 5.5%          | -0.2%          | -1.2%         |
| Illinois | 7.9%          | 6.1%         | 6.0%          | -0.1%          | -1.9%         |
| Kentucky | 7.3%          | 5.5%         | 5.2%          | -0.3%          | -2.1%         |
| Michigan | 7.8%          | 6.3%         | 5.9%          | -0.4%          | -1.9%         |
| Ohio     | 6.2%          | 5.1%         | 5.1%          | 0.0%           | -1.1%         |

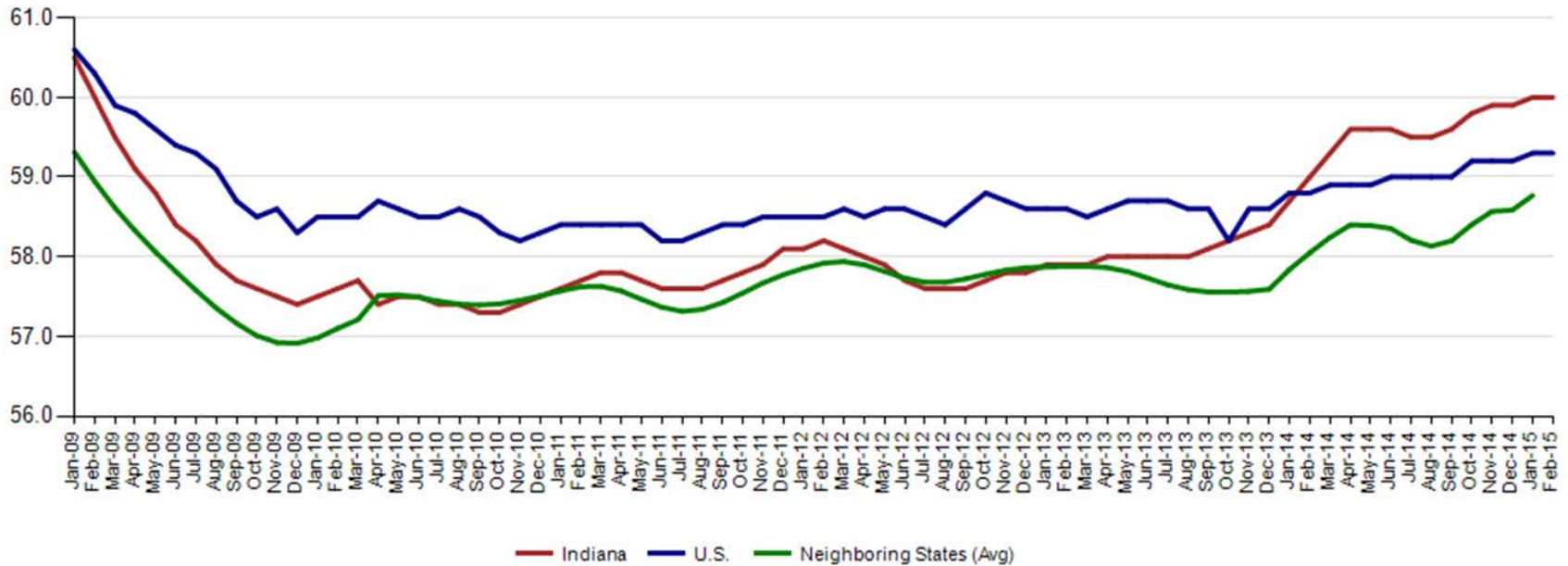


Source: Local Area Unemployment Statistics



Indiana's employment to population ratio remained unchanged at 60.0 in February. This is an increase of 0.7 over the year and surpassing the growth rate for the US and neighboring states.

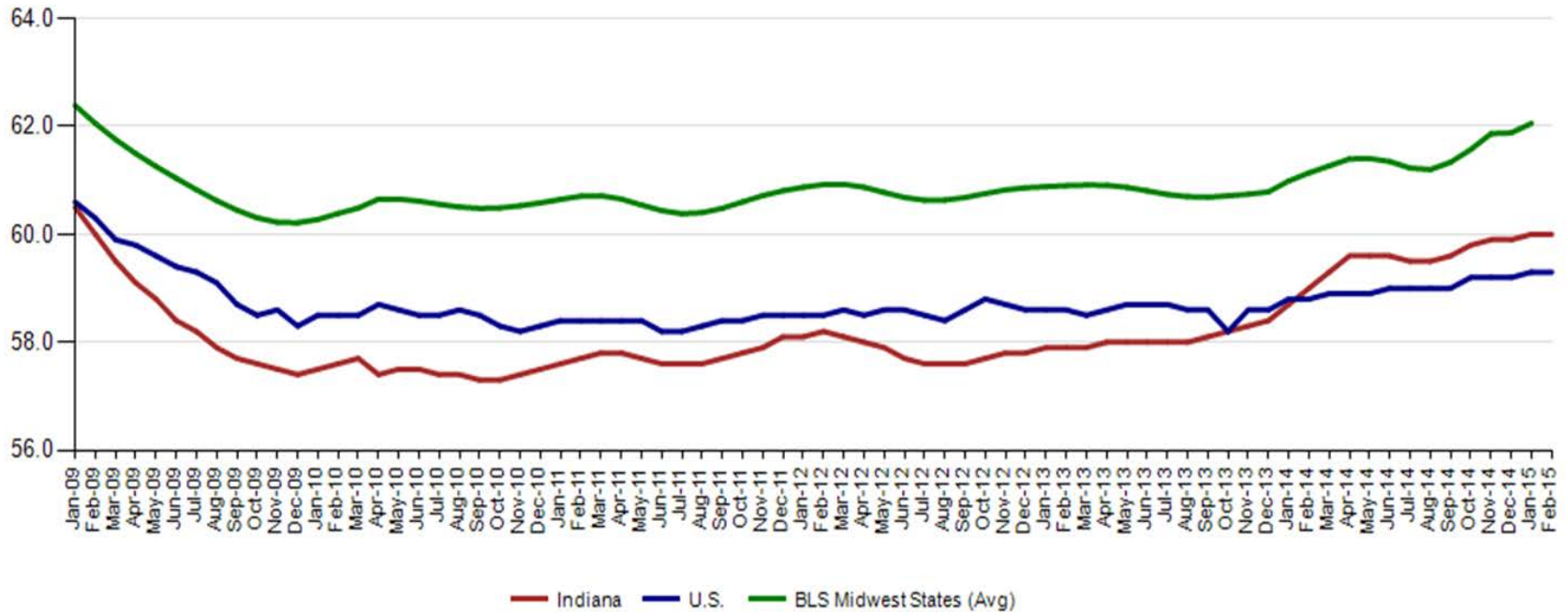
Employment to Population Ratio (seasonally adjusted)



Source: Local Area Unemployment Statistics



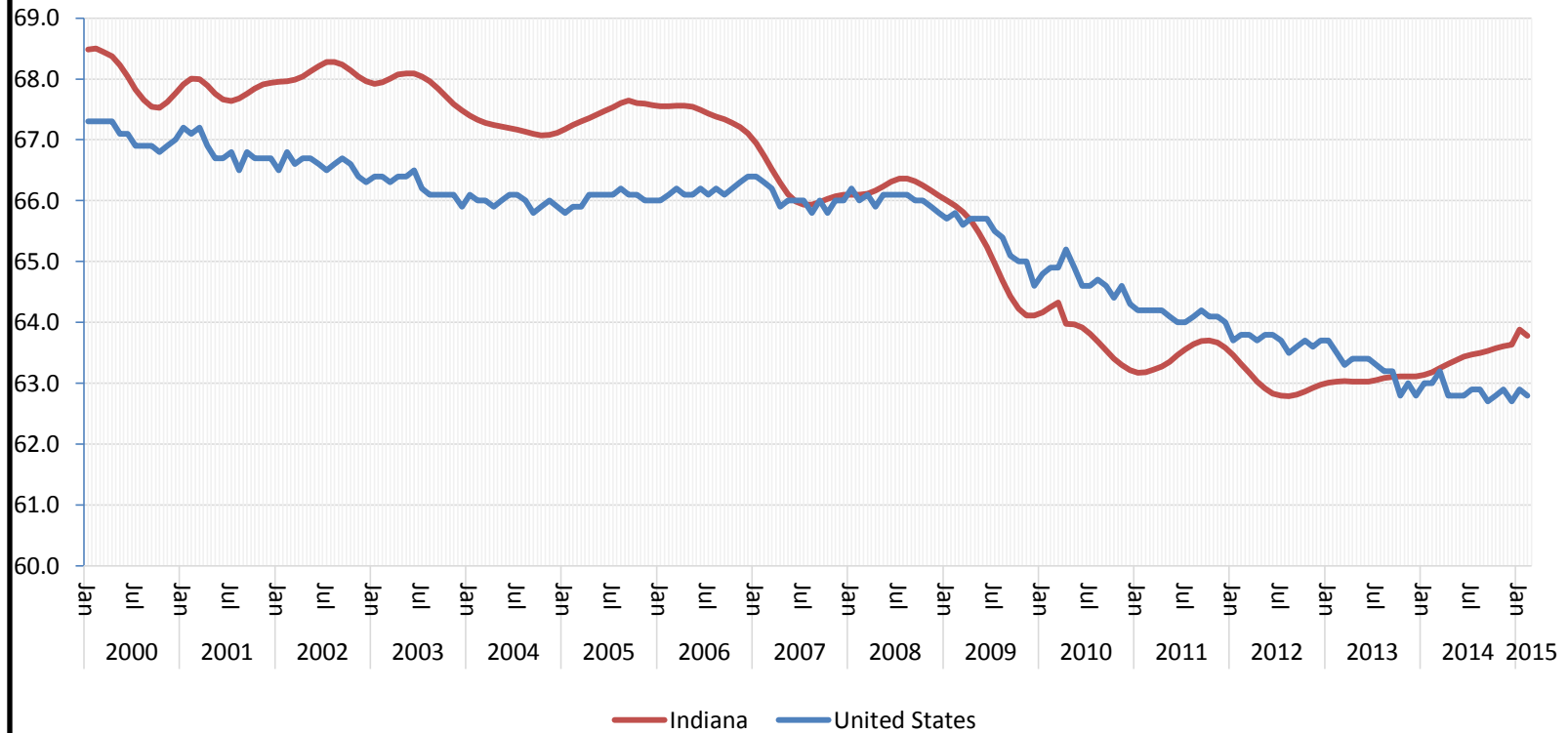
Employment to Population Ratio (seasonally adjusted)



Source: Local Area Unemployment Statistics

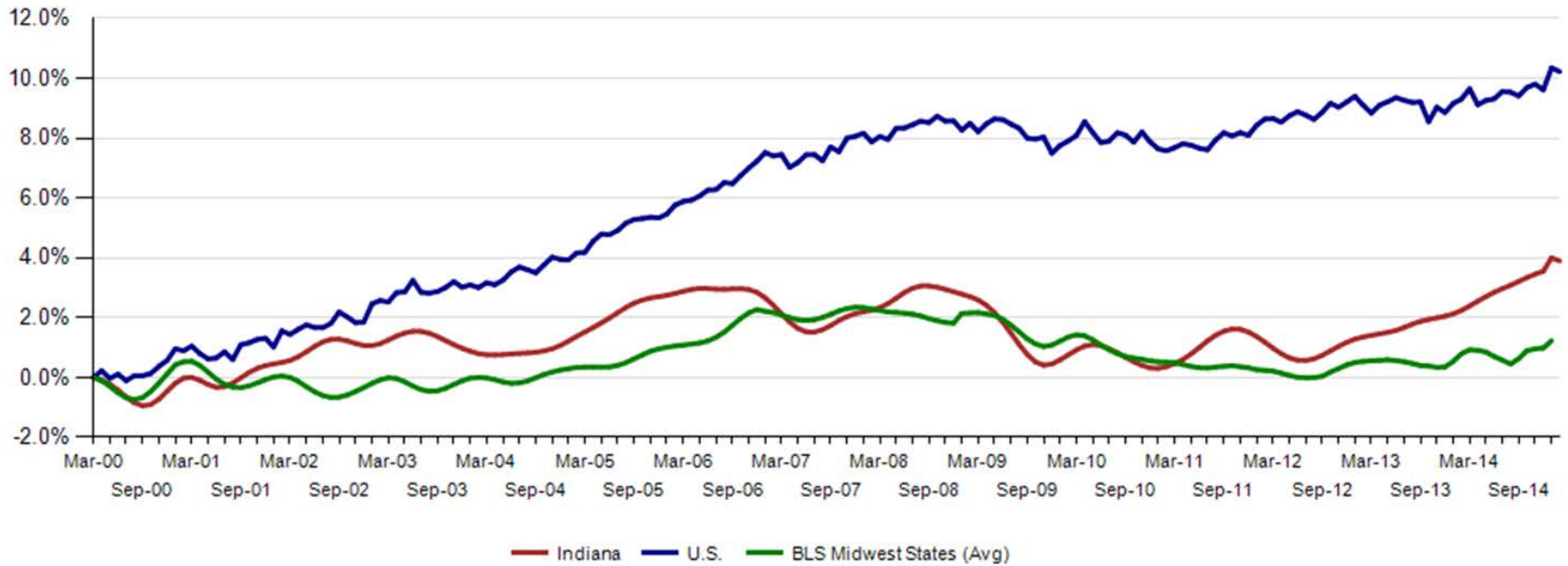


### Labor Force Participation, Indiana and the U.S.





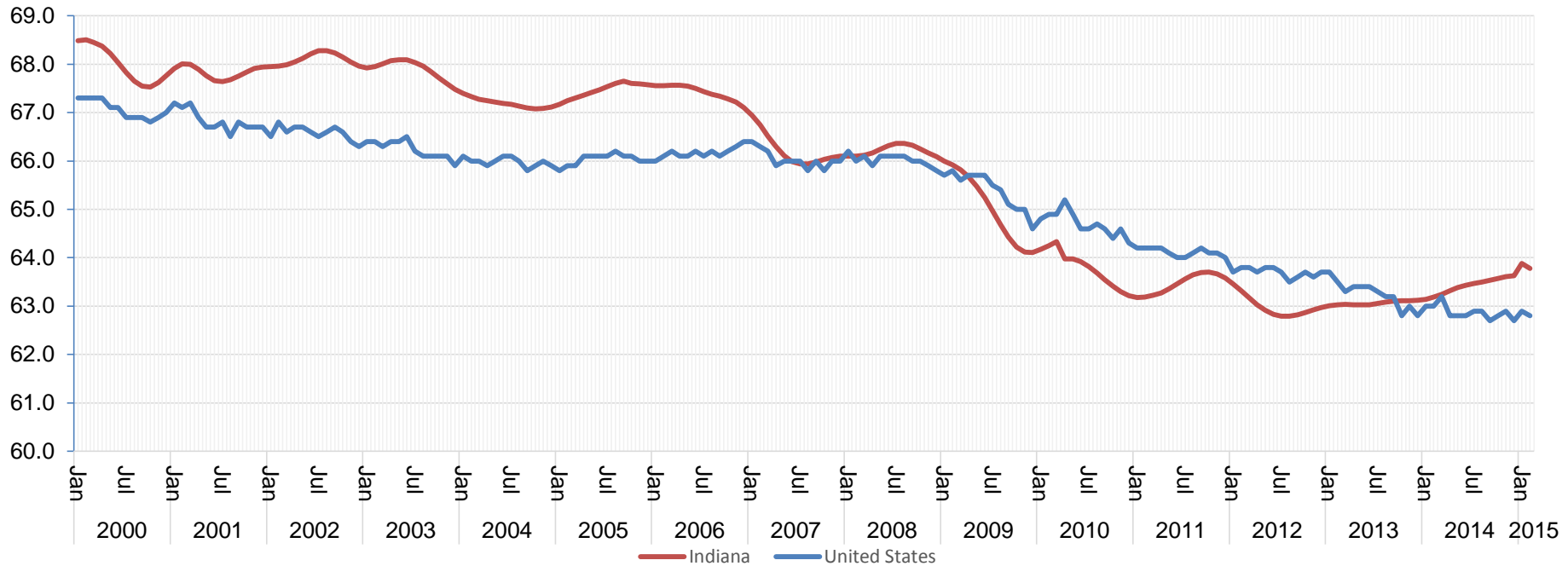
Labor Force Change Since March 2000 Indiana Peak (seasonally adjusted)



Source: Local Area Unemployment Statistics



## Labor Force Participation, Indiana and the U.S.



Source: Local Area Unemployment Statistics





Current Employment Statistics (CES) and Local Area Unemployment Statistics (LAUS) □  
 Point-in-Time Comparison

|                   | March 2000<br>(Peak) | July 2009<br>(Trough) | January<br>2015 | February<br>2015 | Change<br>Peak | Change<br>Trough | Change<br>Prev.<br>Month |
|-------------------|----------------------|-----------------------|-----------------|------------------|----------------|------------------|--------------------------|
| CES Employed      | 3,017.2              | 2,757.7               | 3,016.1         | 3,020.3          | 3.1            | 262.6            | 4.2                      |
| LAUS Employed     | 3,039.1              | 2,847.9               | 3,070.7         | 3,070.8          | 31.6           | 222.9            | 0.1                      |
| LAUS Unemployed   | 102.9                | 340.8                 | 197.0           | 193.7            | 90.7           | -147.1           | -3.4                     |
| Labor Force       | 3,142.1              | 3,188.7               | 3,267.7         | 3,264.4          | 122.4          | 75.8             | -3.3                     |
| Unemployment Rate | 3.3                  | 10.7                  | 6.0             | 5.9              | 2.6            | -4.8             | -0.1                     |

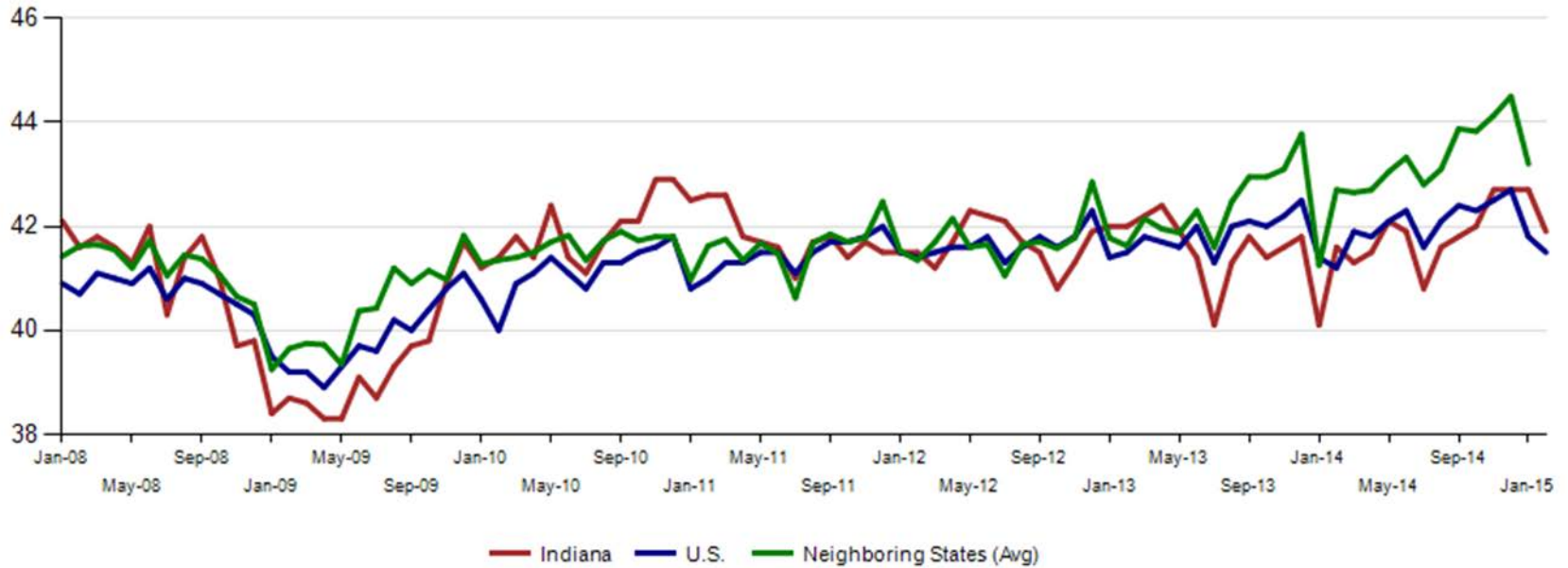
*(LAUS components may not sum exactly due to rounding.)*



## **Additional Reference/Background Material**



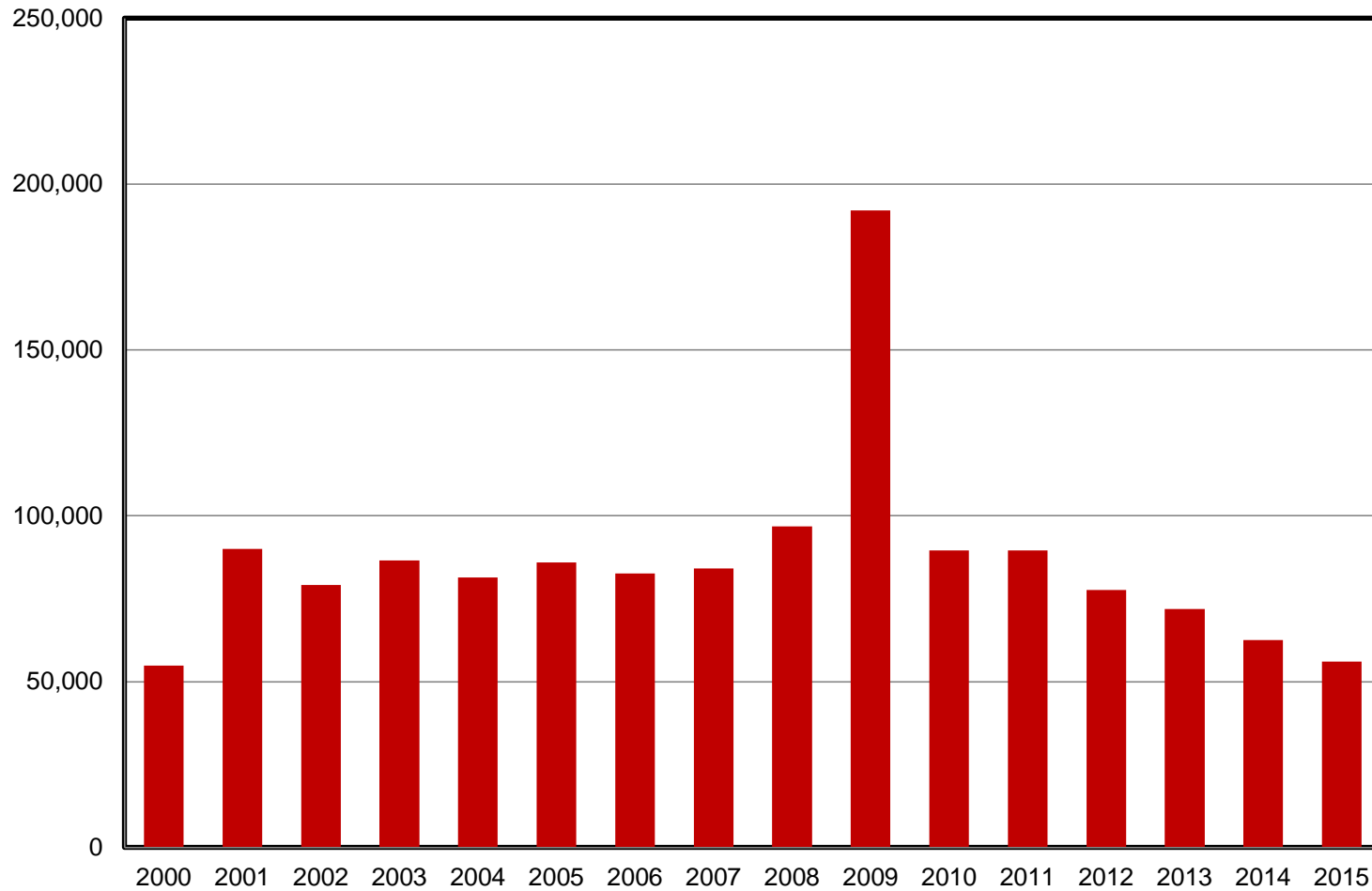
**Avg. Weekly Manufacturing Production Hours (non seasonally adjusted)**



Source: Current Employment Statistics, not seasonally adjusted



## Weekly Initial Claims – 10 weeks aggregate



## MSA ESTIMATES: 2000 And Over-the-Year Change Ranked on percentage change over-the-year (no seasonal adjustment)

### IN Metropolitan Area Employment Estimates

| MSA                 | February 2000 | February 2014 | January 2015 | February 2015 | February 2015 Change | Change since 2000 | % Chg since 2000 | Annual Change | Annual % Change |
|---------------------|---------------|---------------|--------------|---------------|----------------------|-------------------|------------------|---------------|-----------------|
| Elkhart-Goshen      | 126,300       | 120,000       | 123,700      | 124,900       | 1,200                | -1,400            | -1.1%            | 4,900         | 4.1%            |
| Columbus            | 44,300        | 49,200        | 51,100       | 51,200        | 100                  | 6,900             | 15.6%            | 2,000         | 4.1%            |
| Evansville          | 159,500       | 151,700       | 155,600      | 156,800       | 1,200                | -2,700            | -1.7%            | 5,100         | 3.4%            |
| Kokomo              | 49,000        | 39,200        | 40,100       | 40,400        | 300                  | -8,600            | -17.6%           | 1,200         | 3.1%            |
| Muncie              | 57,700        | 49,500        | 50,200       | 51,000        | 800                  | -6,700            | -11.6%           | 1,500         | 3.0%            |
| Indianapolis-Carmel | 882,300       | 965,700       | 990,000      | 993,200       | 3,200                | 110,900           | 12.6%            | 27,500        | 2.8%            |
| Bloomington         | 73,500        | 75,200        | 75,200       | 77,100        | 1,900                | 3,600             | 4.9%             | 1,900         | 2.5%            |
| South Bend          | 148,000       | 133,100       | 134,400      | 135,800       | 1,400                | -12,200           | -8.2%            | 2,700         | 2.0%            |
| Gary Division       | 278,300       | 267,200       | 270,900      | 271,300       | 400                  | -7,000            | -2.5%            | 4,100         | 1.5%            |
| Fort Wayne          | 215,600       | 207,900       | 208,300      | 210,100       | 1,800                | -5,500            | -2.6%            | 2,200         | 1.1%            |
| Michigan City       | 48,600        | 40,800        | 40,900       | 41,000        | 100                  | -7,600            | -15.6%           | 200           | 0.5%            |
| Terre Haute         | 76,900        | 69,600        | 69,300       | 69,400        | 100                  | -7,500            | -9.8%            | -200          | -0.3%           |

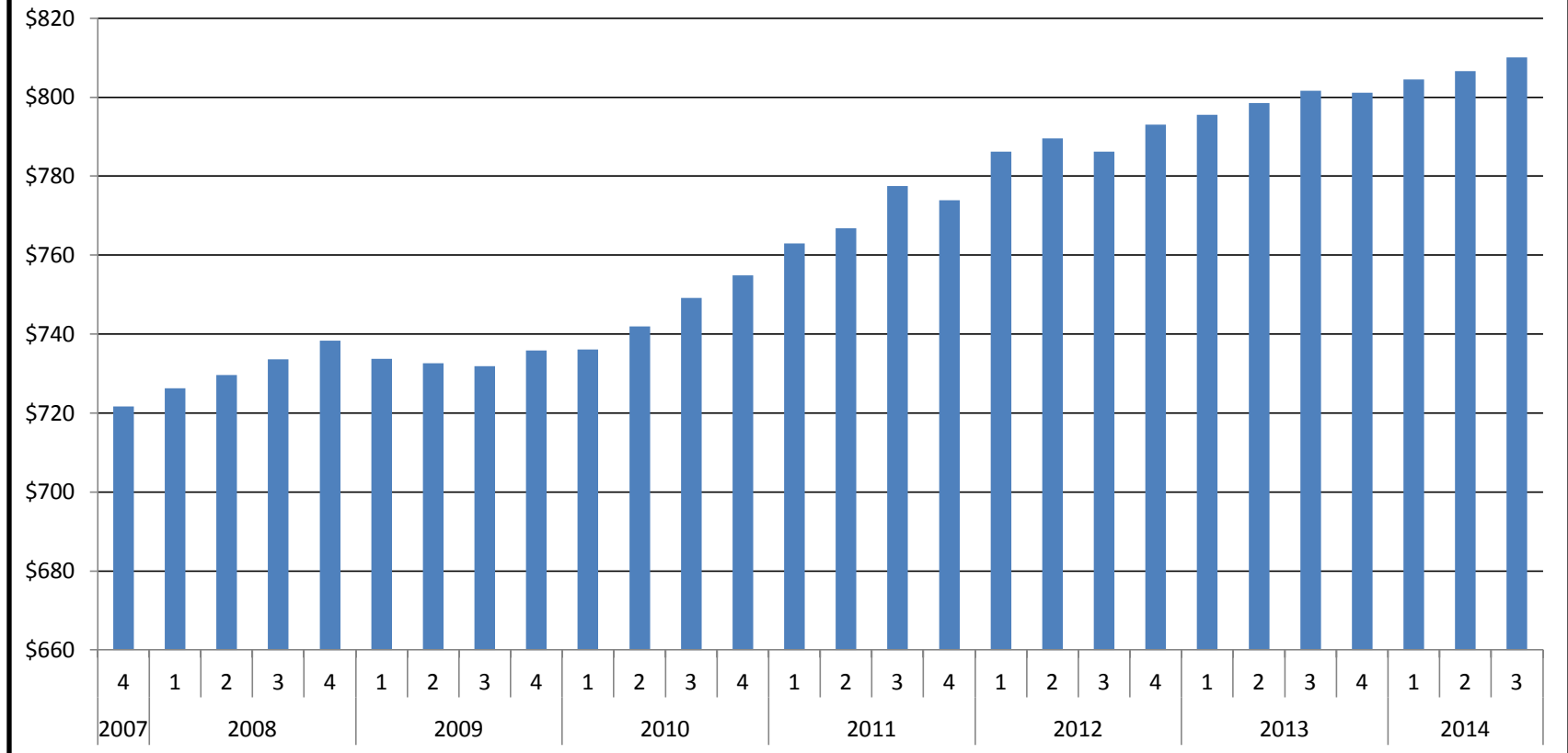


# New ICC Applicants and Job Orders from Indiana Career Connect UI Claimants and OES Employment / Incumbent and Unemployed Workforce

| <i>Indiana Career Connect / Job Orders and Applicants in February 2015</i> |                           |                                  |                            |                       |                                |                                  |   |                |                              |
|--|---------------------------|----------------------------------|----------------------------|-----------------------|--------------------------------|----------------------------------|---|----------------|------------------------------|
| <b>Occupational Group</b>  | <b>New ICC Applicants</b> | <b>January 2015 UI Claimants</b> | <b>Internal Job Orders</b> | <b>All Job Orders</b> | <b>Applicant Concentration</b> | <b>UI Claimant Concentration</b> | <b>Internal Job Order Concentration</b> | <b>ALL JO%</b> | <b>OES EMP Concentration</b> |
| Management Occupations   | 266                       | 5251                             | 304                        | 6,971                 | 10%                            | 7%                               | 5%                                      | 12%            | 4%                           |
| Business and Financial Operations Occupations                              | 84                        | 1736                             | 299                        | 2,005                 | 3%                             | 2%                               | 5%                                      | 3%             | 4%                           |
| Computer and Mathematical Occupations                                      | 45                        | 607                              | 206                        | 2,950                 | 2%                             | 1%                               | 4%                                      | 5%             | 2%                           |
| Architecture and Engineering Occupations                                   | 67                        | 1126                             | 214                        | 2,494                 | 2%                             | 2%                               | 4%                                      | 4%             | 2%                           |
| Life, Physical, and Social Science Occupations                             | 37                        | 282                              | 62                         | 348                   | 1%                             | 0%                               | 1%                                      | 1%             | 1%                           |
| Community and Social Service Occupations                                   | 42                        | 392                              | 121                        | 628                   | 2%                             | 1%                               | 2%                                      | 1%             | 1%                           |
| Legal Occupations  | 16                        | 223                              | 7                          | 72                    | 1%                             | 0%                               | 0%                                      | 0%             | 1%                           |
| Education, Training, and Library Occupations                               | 51                        | 638                              | 84                         | 1,096                 | 2%                             | 1%                               | 1%                                      | 2%             | 6%                           |
| Arts, Design, Entertainment, Sports, and Media Occupations                 | 61                        | 856                              | 75                         | 1,088                 | 2%                             | 1%                               | 1%                                      | 2%             | 1%                           |
| Healthcare Practitioners and Technical Occupations                         | 114                       | 1726                             | 591                        | 10,276                | 4%                             | 2%                               | 10%                                     | 17%            | 6%                           |
| Healthcare Support Occupations   | 101                       | 1655                             | 151                        | 2,248                 | 4%                             | 2%                               | 3%                                      | 4%             | 3%                           |
| Protective Service Occupations   | 52                        | 480                              | 104                        | 412                   | 2%                             | 1%                               | 2%                                      | 1%             | 2%                           |
| Food Preparation and Serving Related Occupations                           | 81                        | 1937                             | 386                        | 2,013                 | 3%                             | 3%                               | 7%                                      | 3%             | 9%                           |
| Building and Grounds Cleaning and Maintenance Occupations                  | 61                        | 3876                             | 205                        | 583                   | 2%                             | 5%                               | 4%                                      | 1%             | 3%                           |
| Personal Care and Service Occupations                                      | 47                        | 483                              | 105                        | 631                   | 2%                             | 1%                               | 2%                                      | 1%             | 2%                           |
| Sales and Related Occupations  | 184                       | 2877                             | 317                        | 7,065                 | 7%                             | 4%                               | 6%                                      | 12%            | 10%                          |
| Office and Administrative Support Occupations                              | 536                       | 7201                             | 653                        | 5,671                 | 19%                            | 10%                              | 12%                                     | 9%             | 14%                          |
| Farming, Fishing, and Forestry Occupations                                 | 13                        | 494                              | 17                         | 39                    | 0%                             | 1%                               | 0%                                      | 0%             | 0%                           |
| Construction and Extraction Occupations                                    | 168                       | 15400                            | 131                        | 544                   | 6%                             | 21%                              | 2%                                      | 1%             | 4%                           |
| Installation, Maintenance, and Repair Occupations                          | 119                       | 4174                             | 351                        | 2,202                 | 4%                             | 6%                               | 6%                                      | 4%             | 4%                           |
| Production Occupations   | 454                       | 11378                            | 753                        | 2,554                 | 16%                            | 15%                              | 13%                                     | 4%             | 12%                          |
| Transportation and Material Moving Occupations                             | 190                       | 11974                            | 539                        | 8,297                 | 7%                             | 16%                              | 9%                                      | 14%            | 9%                           |
| <b>Total</b>   | <b>2,789</b>              | <b>74,766</b>                    | <b>5,675</b>               | <b>60,187</b>         |                                |                                  |   |                |                              |



## Average Weekly Wages, 4 Quarter Rolling Average, Public and Private Sectors Combined





# Year to Year Change in Quarterly Employment: Quarterly Census of Employment and Wages

|                                   | 12-13:Q1 Chg | 12-13:Q2 Chg | 12-13:Q3 Chg | 12-13:Q4 Chg | 13-14:Q1 Chg | 13-14:Q2 Chg | 13-14:Q3 Chg | 2014 Q3<br>Employment |
|-----------------------------------|--------------|--------------|--------------|--------------|--------------|--------------|--------------|-----------------------|
| <b>Total Private</b>              | 39,075       | 36,170       | 36,428       | 47,491       | 33,809       | 45,701       | 41,809       | 2,525,152             |
| Manufacturing                     | 14,025       | 9,168        | 6,306        | 10,080       | 12,367       | 15,566       | 16,520       | 510,080               |
| Health Care & Social Assistance   | 9,522        | 9,763        | 7,446        | 4,865        | -89          | 298          | 1,710        | 372,691               |
| Retail Trade                      | 1,401        | 3,749        | 5,187        | 5,046        | 4,798        | 3,335        | 2,367        | 319,014               |
| Accommodations & Food Services    | 5,204        | 5,584        | 4,589        | 4,494        | 1,801        | 3,906        | 4,512        | 258,486               |
| Admin. & Support & Waste Mgmt.    | 1,383        | 747          | 5,255        | 12,924       | 9,866        | 12,844       | 5,472        | 185,911               |
| Construction                      | -160         | -1,584       | -2,869       | -2,258       | -3,317       | -926         | 1,016        | 130,022               |
| Wholesale Trade                   | 270          | 607          | 702          | 1,196        | 616          | 641          | 955          | 118,817               |
| Transportation & Warehousing      | 3,373        | 3,062        | 3,135        | 3,642        | 3,139        | 2,878        | 3,400        | 117,291               |
| Professional & Technical Services | 1,831        | 2,076        | 2,318        | 2,189        | 2,776        | 3,375        | 3,507        | 104,507               |
| Finance & Insurance               | -164         | 148          | 383          | 384          | 692          | 409          | 568          | 93,249                |
| Other Services                    | 660          | 515          | 681          | 345          | -178         | 846          | 645          | 83,995                |
| Educational Services              | 183          | 666          | 129          | 667          | 168          | -39          | 386          | 46,861                |
| Arts, Entertainment & Recreation  | -192         | -307         | 252          | 825          | -645         | 140          | -594         | 44,611                |
| Information                       | 163          | 119          | 285          | -136         | -375         | -113         | 18           | 35,885                |
| Real Estate                       | 171          | 63           | 280          | 175          | 372          | 364          | 308          | 33,683                |
| Management of Companies           | 1,522        | 1,989        | 2,150        | 2,157        | 1,200        | 1,254        | 1,213        | 32,515                |
| Utilities                         | -261         | -268         | -115         | -34          | 6            | 47           | -113         | 14,120                |
| Agriculture, Forestry             | 263          | 205          | 318          | 841          | 591          | 504          | -409         | 16,240                |
| Mining                            | -130         | -132         | -2           | 89           | 4            | 351          | 256          | 7,093                 |
| <b>Total Public</b>               | -5,405       | -4,134       | 533          | -2,397       | -1,348       | 2,314        | -582         | 376,012               |
| <i>Federal</i>                    | 195          | -233         | -942         | -1,271       | -1,458       | -974         | -374         | 36,222                |
| <i>State</i>                      | -1,878       | -1,748       | -684         | -963         | -229         | -76          | -1,259       | 86,962                |
| Public Colleges & Universities    | -1,954       | -1,741       | -486         | -599         | 309          | 470          | -495         | 53,980                |
| State Govt except Education       | 75           | -8           | -198         | -364         | -538         | -546         | -764         | 32,982                |
| <i>Local</i>                      | -3,722       | -2,152       | 2,159        | -163         | 339          | 3,364        | 1,051        | 252,828               |
| Local Public Schools (K-12)       | -1,621       | -258         | 1,891        | -966         | -1,364       | 1,965        | 261          | 128,540               |
| Local Government except Educ.     | -2,101       | -1,895       | 268          | 803          | 1,704        | 1,399        | 790          | 124,288               |





Over-the-year change in Indiana's LAUS-estimated employment, at 2.0%, just behind the U.S. o-t-y growth of 2.1%. The January employment aggregate for other Midwest border states was almost flat (+0.4%)

Labor Force Estimates for IN, U.S. and Neighboring States' Average Employment, Unemployment & Labor Force (seasonally adjusted)

| Employment                | 2006<br>Jan | 2007<br>Jan | 2008<br>Jan | 2009<br>Jan | 2010<br>Jan | 2011<br>Jan | 2012<br>Jan | 2013<br>Jan | 2014<br>Jan | 2015<br>Jan |
|---------------------------|-------------|-------------|-------------|-------------|-------------|-------------|-------------|-------------|-------------|-------------|
| <b>U.S. (in 1000s)</b>    | 143,150     | 146,028     | 146,378     | 142,152     | 138,438     | 139,267     | 141,633     | 143,328     | 145,206     | 148,201     |
| <i>Year-to-Year Chg</i>   | 2.1%        | 2.0%        | 0.2%        | -2.9%       | -2.6%       | 0.6%        | 1.7%        | 1.2%        | 1.3%        | 2.1%        |
| <b>Indiana</b>            | 3,062,210   | 3,072,387   | 3,057,592   | 2,937,971   | 2,817,132   | 2,864,325   | 2,912,949   | 2,916,518   | 3,010,364   | 3,070,663   |
| <i>Year-to-Year Chg</i>   | 2.0%        | 0.3%        | -0.5%       | -3.9%       | -4.1%       | 1.7%        | 1.7%        | 0.1%        | 3.2%        | 2.0%        |
| <b>Neighboring States</b> | 18,335,002  | 18,614,507  | 18,538,280  | 17,726,181  | 17,093,300  | 17,278,400  | 17,428,991  | 17,500,567  | 17,568,054  |             |
| <i>Year-to-Year Chg</i>   | 1.5%        | 1.5%        | -0.4%       | -4.4%       | -3.6%       | 1.1%        | 0.9%        | 0.4%        | 0.4%        |             |
| <b>BLS Midwest States</b> | 29,686,388  | 30,085,925  | 30,020,979  | 29,048,064  | 28,205,563  | 28,475,587  | 28,722,201  | 28,872,325  | 29,085,485  |             |
| <i>Year-to-Year Chg</i>   | 1.4%        | 1.3%        | -0.2%       | -3.2%       | -2.9%       | 1.0%        | 0.9%        | 0.5%        | 0.7%        |             |

| Unemployment              | 2006<br>Jan | 2007<br>Jan | 2008<br>Jan | 2009<br>Jan | 2010<br>Jan | 2011<br>Jan | 2012<br>Jan | 2013<br>Jan | 2014<br>Jan | 2015<br>Jan |
|---------------------------|-------------|-------------|-------------|-------------|-------------|-------------|-------------|-------------|-------------|-------------|
| <b>U.S. (in 1000s)</b>    | 7,064       | 7,116       | 7,685       | 12,058      | 15,046      | 14,046      | 12,812      | 12,497      | 10,280      | 8,979       |
| <i>Year-to-Year Chg</i>   | -9.2%       | 0.7%        | 8.0%        | 56.9%       | 24.8%       | -6.6%       | -8.8%       | -2.5%       | -17.7%      | -12.7%      |
| <b>Indiana</b>            | 166,129     | 153,319     | 153,473     | 291,588     | 343,320     | 287,336     | 272,051     | 265,783     | 198,457     | 197,162     |
| <i>Year-to-Year Chg</i>   | -7.5%       | -7.7%       | 0.1%        | 90.0%       | 17.7%       | -16.3%      | -5.3%       | -2.3%       | -25.3%      | -0.7%       |
| <b>Neighboring States</b> | 1,118,263   | 1,086,127   | 1,173,535   | 1,782,570   | 2,257,574   | 1,863,116   | 1,649,761   | 1,610,831   | 1,488,350   |             |
| <i>Year-to-Year Chg</i>   | -8.0%       | -2.9%       | 8.0%        | 51.9%       | 26.6%       | -17.5%      | -11.5%      | -2.4%       | -7.6%       |             |
| <b>BLS Midwest States</b> | 1,594,448   | 1,566,790   | 1,670,927   | 2,582,886   | 3,138,626   | 2,655,288   | 2,326,146   | 2,251,500   | 2,049,281   |             |
| <i>Year-to-Year Chg</i>   | -9.9%       | -1.7%       | 6.6%        | 54.6%       | 21.5%       | -15.4%      | -12.4%      | -3.2%       | -9.0%       |             |

| Labor Force               | 2006<br>Jan | 2007<br>Jan | 2008<br>Jan | 2009<br>Jan | 2010<br>Jan | 2011<br>Jan | 2012<br>Jan | 2013<br>Jan | 2014<br>Jan | 2015<br>Jan |
|---------------------------|-------------|-------------|-------------|-------------|-------------|-------------|-------------|-------------|-------------|-------------|
| <b>U.S. (in 1000s)</b>    | 150,214     | 153,144     | 154,063     | 154,210     | 153,484     | 153,314     | 154,445     | 155,825     | 155,486     | 157,180     |
| <i>Year-to-Year Chg</i>   | 1.5%        | 2.0%        | 0.6%        | 0.1%        | -0.5%       | -0.1%       | 0.7%        | 0.9%        | -0.2%       | 1.1%        |
| <b>Indiana</b>            | 3,228,339   | 3,225,706   | 3,211,065   | 3,229,559   | 3,160,452   | 3,151,661   | 3,185,000   | 3,182,301   | 3,208,821   | 3,267,825   |
| <i>Year-to-Year Chg</i>   | 1.5%        | -0.1%       | -0.5%       | 0.6%        | -2.1%       | -0.3%       | 1.1%        | -0.1%       | 0.8%        | 1.8%        |
| <b>Neighboring States</b> | 19,453,265  | 19,700,634  | 19,711,815  | 19,508,751  | 19,350,874  | 19,141,516  | 19,078,752  | 19,111,398  | 19,056,404  |             |
| <i>Year-to-Year Chg</i>   | 0.9%        | 1.3%        | 0.1%        | -1.0%       | -0.8%       | -1.1%       | -0.3%       | 0.2%        | -0.3%       |             |
| <b>BLS Midwest States</b> | 31,280,836  | 31,652,715  | 31,691,906  | 31,630,950  | 31,344,189  | 31,130,875  | 31,048,347  | 31,123,825  | 31,134,766  |             |
| <i>Year-to-Year Chg</i>   | 0.7%        | 1.2%        | 0.1%        | -0.2%       | -0.9%       | -0.7%       | -0.3%       | 0.2%        | 0.0%        |             |

Source: Local Area Unemployment Statistics



## Private Sector Employment

