



INDIANA
DEPARTMENT OF
WORKFORCE
DEVELOPMENT

Indiana's Employment and Labor Force Estimates December 2017

01/17/2018

Key Points

- **Indiana's unemployment rate decreased 0.3% to 3.4% in December 2017.**
The U.S. rate is 4.1%.
- Indiana's rate has decreased 0.6 percentage points over the year from December 2016.
- Indiana's Labor Force decreased 14,195; due to a decrease in residence employment of 3,499 and a decrease in unemployment of 10,696.
- Indiana's Labor Force has decreased 6,781 over the year.
- Indiana's Labor Force Participation rate decreased 0.3 percentage points over the month and is currently 63.6%. This remains above the U.S. Labor Force Participation rate which stands at 62.7%.

Key Points

- Indiana's total private employment increased by 6,000 over the month and had gains of 24,400 over the year.
- Indiana private employment now stands at 2,697,700.
- Manufacturing grew by 4,700 jobs.
- Private Educational & Health Services grew by 3,500.
- Leisure and Hospitality grew by 1,300.
- Construction grew by 700.
- Professional and Business Services lost 4,100 jobs.
- Financial Activities lost 1,900 jobs.

Employed persons (Current Population Survey)

Persons 16 years and over in the civilian noninstitutional population who, during the reference week, (a) did any work at all (at least 1 hour) as paid employees; worked in their own business, profession, or on their own farm, or worked 15 hours or more as unpaid workers in an enterprise operated by a member of the family; and (b) all those who were not working but who had jobs or businesses from which they were temporarily absent because of vacation, illness, bad weather, childcare problems, maternity or paternity leave, labor-management dispute, job training, or other family or personal reasons, whether or not they were paid for the time off or were seeking other jobs. Each employed person is counted only once, even if he or she holds more than one job. Excluded are persons whose only activity consisted of work around their own house (painting, repairing, or own home housework) or volunteer work for religious, charitable, and other organizations.

Unemployed persons (Current Population Survey)

Persons aged 16 years and older who had no employment during the reference week, were available for work, except for temporary illness, and had made specific efforts to find employment sometime during the 4-week period ending with the reference week. Persons who were waiting to be recalled to a job from which they had been laid off need not have been looking for work to be classified as unemployed.

Marginally attached workers (Current Population Survey)

Persons not in the labor force who want and are available for work, and who have looked for a job sometime in the prior 12 months (or since the end of their last job if they held one within the past 12 months), but were not counted as unemployed because they had not searched for work in the 4 weeks preceding the survey. Discouraged workers are a subset of the marginally attached.

Discouraged workers (Current Population Survey)

Persons not in the labor force who want and are available for a job and who have looked for work sometime in the past 12 months (or since the end of their last job if they held one within the past 12 months), but who are not currently looking because they believe there are no jobs available or there are none for which they would qualify.

Current Employment Statistics (CES) Compared to Local Area Unemployment Statistics (LAUS)

LAUS (Labor Force by Residence)

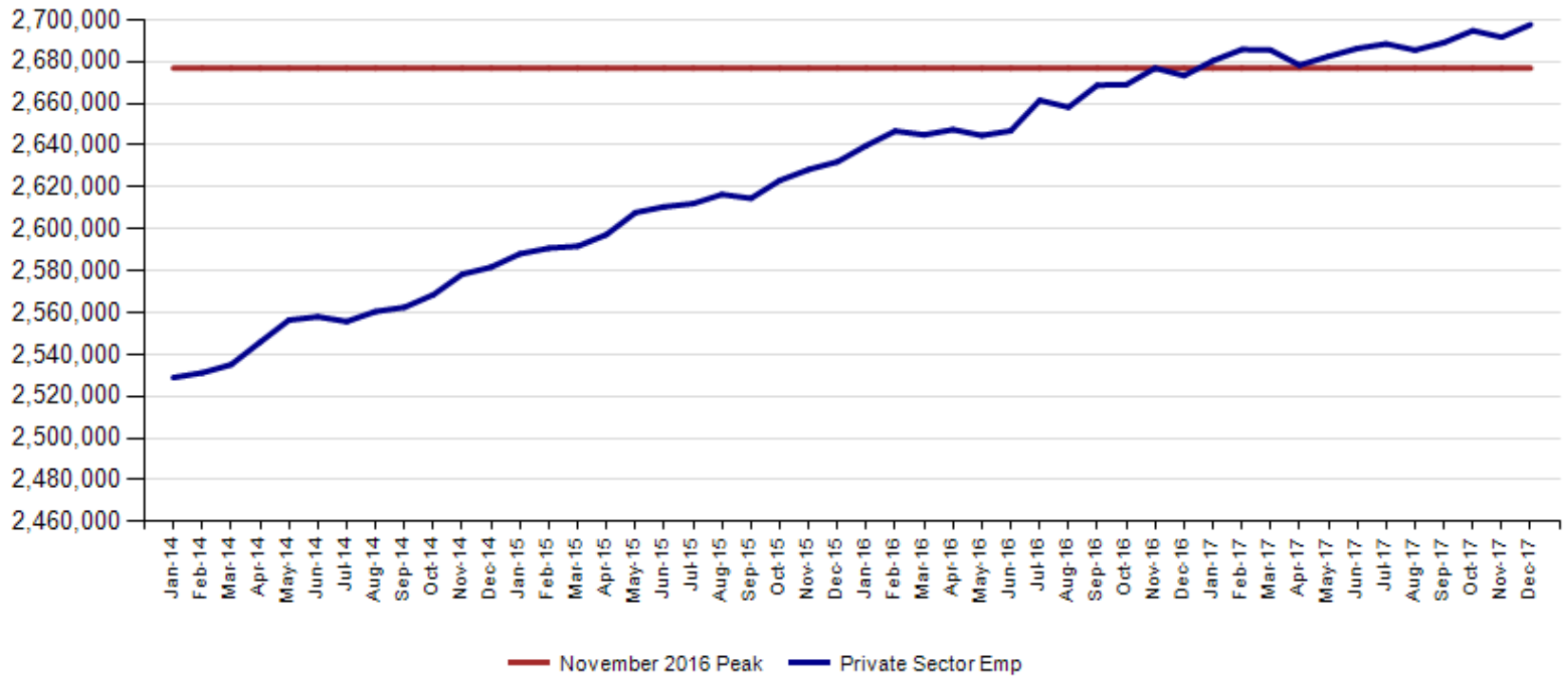
- An estimate of employment based on where the employee lives, rather than where they work
- This is a count of people not jobs
- Used in calculating the labor force

CES (Employment by Job)

- An estimate or count of employment based on the location of the job regardless of the worker's residence
- Also called nonag wage and salary or nonfarm employment
- This counts jobs, not people
- Used in Quarterly Census of Employment and Wages (QCEW) , Occupational Employment Statistics (OES) and CES data

December total private employment is 20,800 above the November 2016 peak.

Indiana Private Sector Employment





December 2017 Indiana private sector employment increased by 6,000 jobs over the month and is up 24,400 over the year. Manufacturing grew by 4,700 and Private Educational & Health Services grew by 3,500.

IN Employment Change Over the Month, Year-to-Date and Over the Year (seasonally adjusted)						
Industry	December 2016	November 2017	December 2017	Month Change	Y-to-D Change	Y-to-Y Change
Private Educational & Health Services	470.0	475.3	478.8	3.5	8.8	8.8
.....Private Educational Services	71.3	70.2	70.5	0.3	-0.8	-0.8
.....Health Care & Social Assistance	398.7	405.1	408.3	3.2	9.6	9.6
Manufacturing	526.9	529.8	534.5	4.7	7.6	7.6
Professional & Business Services	337.3	339.3	335.2	-4.1	-2.1	-2.1
Financial Activities	134.8	139.8	137.9	-1.9	3.1	3.1
Construction	128.8	139.0	139.7	0.7	10.9	10.9
Leisure and Hospitality	310.2	306.4	307.7	1.3	-2.5	-2.5
Trade, Transportation & Utilities	598.4	595.9	596.8	0.9	-1.6	-1.6
.....Trade	455.2	456.0	454.5	-1.5	-0.7	-0.7
.....Transportation, Warehousing & Utilities	143.2	139.9	142.3	2.4	-0.9	-0.9
All Other	166.9	166.2	167.1	0.9	0.2	0.2
Total Private	2,673.3	2,691.7	2,697.7	6.0	24.4	24.4
Government (Includes Public Schools & Hospitals)	430.6	438.8	438.5	-0.3	7.9	7.9
Total Nonfarm	3,103.9	3,130.5	3,136.2	5.7	32.3	32.3
United States Total Private	123,026.0	124,893.0	125,039.0	146.0	2,013.0	2,013.0



December 2017 estimates show Indiana has gained 374,500 in Private jobs since the July 2009 trough. Manufacturing has accounted for 107,600 of those jobs.

IN Statewide Estimates (seasonally adjusted) -- December 2017

Supersector	Private Empl. Peak Nov 2016	Private Empl. Trough July 2009	November 2017	December 2017	Month to Month Change	Change Since Peak	Change Since Trough	% Month to Month Change
Private Educational & Health Services	472.1	411.1	475.3	478.8	3.5	6.7	67.7	0.7%
.....Private Educational Services	74.2	63.3	70.2	70.5	0.3	-3.7	7.2	0.4%
.....Health Care & Social Assistance	397.9	347.8	405.1	408.3	3.2	10.4	60.5	0.8%
Manufacturing	524.6	426.9	529.8	534.5	4.7	9.9	107.6	0.9%
Professional & Business Services	340.7	256.9	339.3	335.2	-4.1	-5.5	78.3	-1.2%
Financial Activities	134.9	130.7	139.8	137.9	-1.9	3.0	7.2	-1.4%
Construction	129.1	116.5	139.0	139.7	0.7	10.6	23.2	0.5%
Leisure and Hospitality	309.5	276.8	306.4	307.7	1.3	-1.8	30.9	0.4%
Trade, Transportation & Utilities	598.8	545.7	595.9	596.8	0.9	-2.0	51.1	0.2%
.....Trade	454.5	421.6	456.0	454.5	-1.5	0.0	32.9	-0.3%
.....Transportation, Warehousing & Utilities	144.3	124.1	139.9	142.3	2.4	-2.0	18.2	1.7%
All Other	167.2	158.6	166.2	167.1	0.9	-0.1	8.5	0.5%
Total Private	2,676.9	2,323.2	2,691.7	2,697.7	6.0	20.8	374.5	0.2%
Government (Includes Public Schools & Hospitals)	431.4	434.5	438.8	438.5	-0.3	7.1	4.0	-0.1%
Total Nonfarm	3,108.3	2,757.7	3,130.5	3,136.2	5.7	27.9	378.5	0.2%
United States Total Private	122,876.0	108,171.0	124,893.0	125,039.0	146.0	2,163.0	16,868.0	0.1%



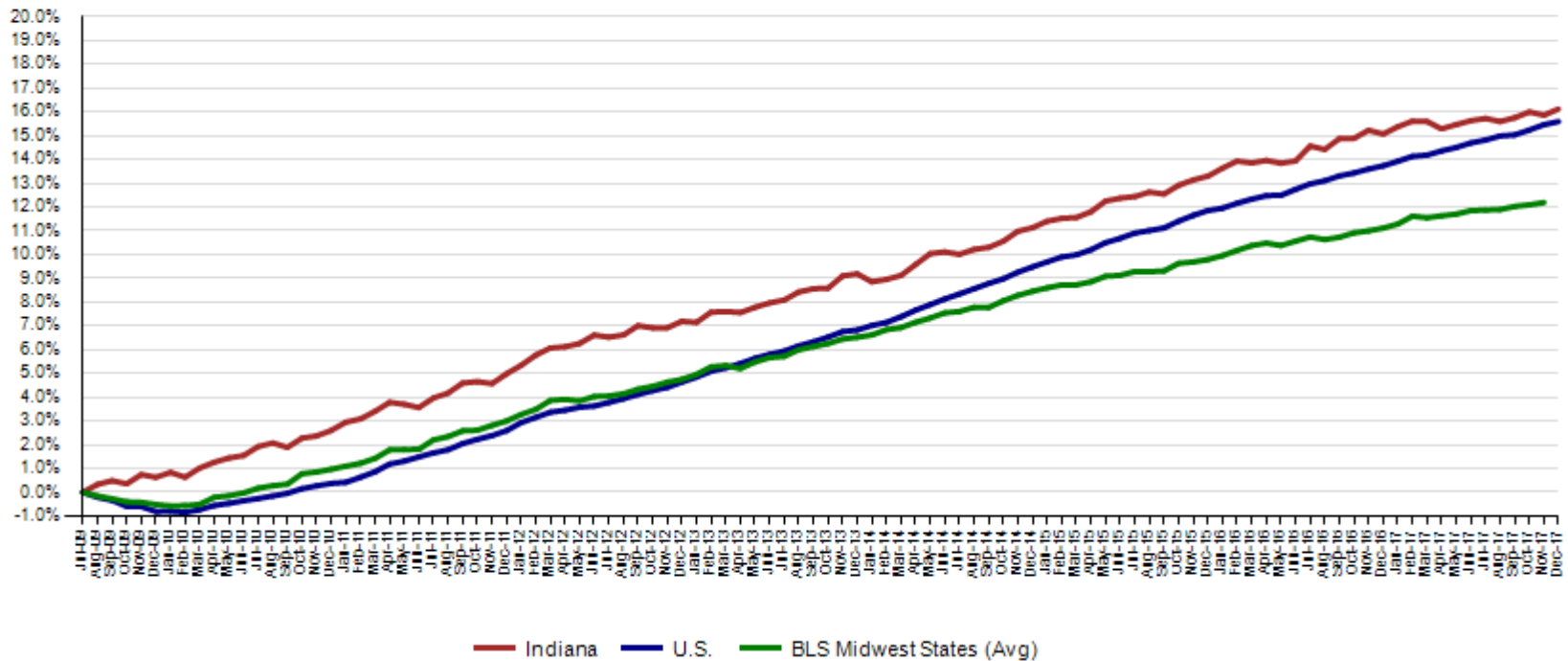
December Indiana private sector job growth over the month grew faster than the national trend. Indiana Construction is growing faster than the U.S. over the month and over the year.

IN Employment Change Compared to the U.S.

Industry	Indiana Month to Month	U.S. Month to Month	Indiana vs U.S. Change	Indiana	U.S. Year-to-	Indiana vs	Indiana	U.S. Year-to-	Indiana vs
				Year-to-Date	Date	U.S. Change	Year-to-Year	Year	U.S. Change
Private Educational & Health Services	0.7%	0.1%	OVER	1.9%	1.9%	UNDER	1.9%	1.9%	UNDER
.....Private Educational Services	0.4%	0.0%	OVER	-1.1%	1.8%	UNDER	-1.1%	1.8%	UNDER
.....Health Care & Social Assistance	0.8%	0.1%	OVER	2.4%	1.9%	OVER	2.4%	1.9%	OVER
Manufacturing	0.9%	0.2%	OVER	1.4%	1.6%	UNDER	1.4%	1.6%	UNDER
Professional & Business Services	-1.2%	0.1%	UNDER	-0.6%	2.6%	UNDER	-0.6%	2.6%	UNDER
Financial Activities	-1.4%	0.1%	UNDER	2.3%	1.6%	OVER	2.3%	1.6%	OVER
Construction	0.5%	0.4%	OVER	8.5%	3.1%	OVER	8.5%	3.1%	OVER
Leisure and Hospitality	0.4%	0.2%	OVER	-0.8%	1.9%	UNDER	-0.8%	1.9%	UNDER
Trade, Transportation & Utilities	0.2%	0.0%	OVER	-0.3%	0.3%	UNDER	-0.3%	0.3%	UNDER
.....Trade	-0.3%	0.0%	UNDER	-0.2%	0.0%	UNDER	-0.2%	0.0%	UNDER
.....Transportation, Warehousing & Utils	1.7%	0.0%	OVER	-0.6%	1.2%	UNDER	-0.6%	1.2%	UNDER
All Other	0.5%	0.2%	OVER	0.1%	1.4%	UNDER	0.1%	1.4%	UNDER
Total Private	0.2%	0.1%	OVER	0.9%	1.6%	UNDER	0.9%	1.6%	UNDER
Government (Includes Public Schools & Hospitals)	-0.1%	0.0%	UNDER	1.8%	0.2%	OVER	1.8%	0.2%	OVER
Total Nonfarm	0.2%	0.1%	OVER	1.0%	1.4%	UNDER	1.0%	1.4%	UNDER

Since the low point of employment in July 2009, private sector employment growth in Indiana has surpassed the U.S. (16.1% vs. 15.6%) through December 2017. BLS Region state growth was at 12% through November 2017.

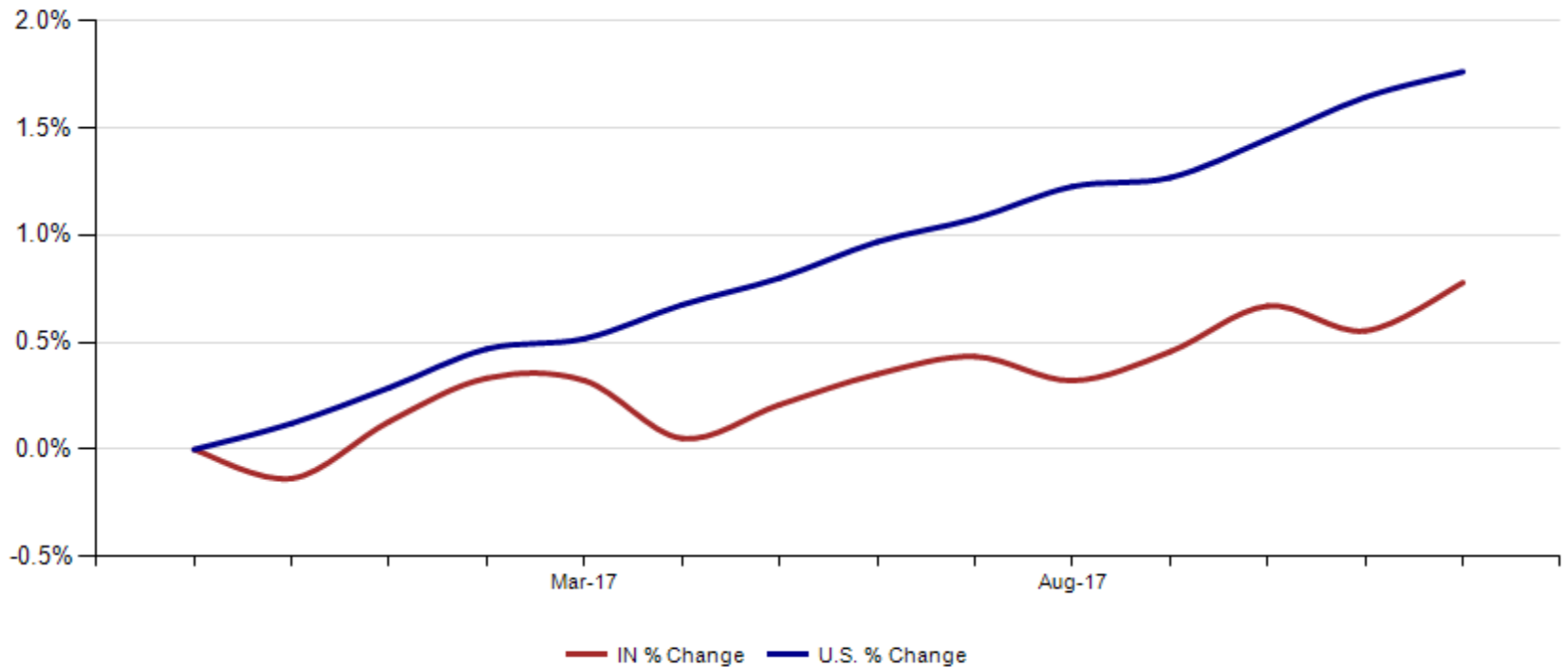
Private Sector Job Growth Since the Low Point of Employment in Indiana





Since Indiana's high point of employment (November 2016), private sector employment growth in Indiana has lagged the U.S. (0.8% growth vs. 1.8% nationally).

Private Sector Job Growth Since the Peak of Employment in Indiana



CES November Total Non Farm preliminary estimates were revised up 1,200 jobs. Private employment was revised up by 1,100. The change from October to November is now a decrease of 3,300 in Total Non-Farm and a decrease of 3,100 in private employment.



INDIANA
DEPARTMENT OF
WORKFORCE
DEVELOPMENT

Revisions to November 2017 Estimates

INDUSTRY TITLE	Oct	Nov Pre	Nov Rev	Revision	Chg from Oct	Pre Chg from Oct
Total Nonfarm	3133.8	3129.3	3130.5	1.2	-3.3	-4.5
Total Private	2694.8	2690.6	2691.7	1.1	-3.1	-4.2
Goods Producing	672.3	676.0	675.1	-0.9	2.8	3.7
Service-Providing	2461.5	2453.3	2455.4	2.1	-6.1	-8.2
Private Service Providing	2022.5	2014.6	2016.6	2.0	-5.9	-7.9
Construction	134.3	139.2	139.0	-0.2	4.7	4.9
Manufacturing	531.7	530.5	529.8	-0.7	-1.9	-1.2
Trade, Transportation, and Utilities	597.8	594.9	595.9	1.0	-1.9	-2.9
Wholesale Trade	119.6	118.5	118.9	0.4	-0.7	-1.1
Retail Trade	337.4	336.3	337.1	0.8	-0.3	-1.1
Transportation, Warehousing, and Utilities	140.8	140.1	139.9	-0.2	-0.9	-0.7
Information	30.5	29.8	29.8	0.0	-0.7	-0.7
Financial Activities	140.6	139.7	139.8	0.1	-0.8	-0.9
Finance and Insurance	105.0	103.8	103.9	0.1	-1.1	-1.2
Real Estate and Rental and Leasing	35.6	35.9	35.9	0.0	0.3	0.3
Professional and Business Services	339.6	339.5	339.3	-0.2	-0.3	-0.1
Professional, Scientific, and Technical Services	118.4	116.8	116.8	0.0	-1.6	-1.6
Management of Companies and Enterprises	34.9	35.3	35.2	-0.1	0.3	0.4
Admin & Support & Waste Mgmt & Remediation Services	186.3	187.4	187.3	-0.1	1.0	1.1
Education and Health Services	474.6	474.3	475.3	1.0	0.7	-0.3
Educational Services	69.5	70.2	70.2	0.0	0.7	0.7
Health Care and Social Assistance	405.1	404.1	405.1	1.0	0.0	-1.0
Leisure and Hospitality	308.8	306.3	306.4	0.1	-2.4	-2.5
Other Services	130.6	130.1	130.1	0.0	-0.5	-0.5
Government	439.0	438.7	438.8	0.1	-0.2	-0.3

Unemployment Rate Estimates for Indiana and United States December 2017 (2016 Benchmarked Data)

Seasonally Adjusted Rates

	Dec 2017	Nov 2017	Nov 2016
Indiana	3.4	3.7	4.0
US	4.1	4.1	4.7

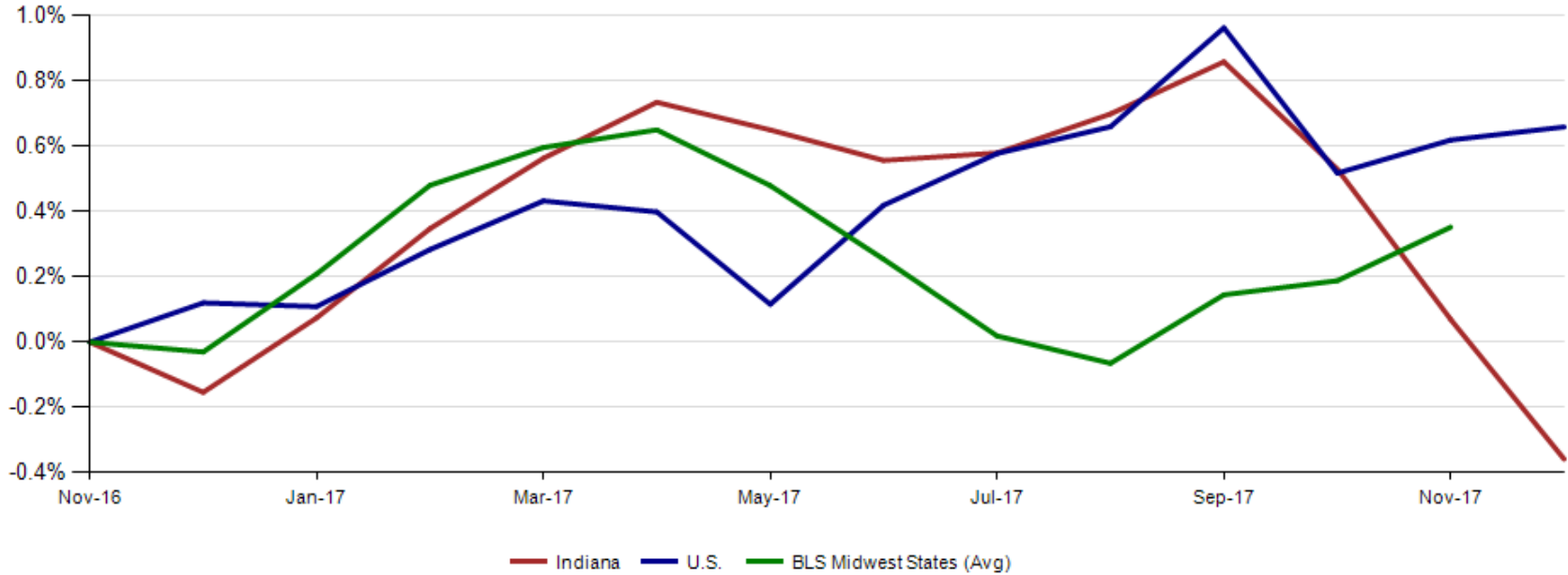
Non-Seasonally Adjusted Rates

	Dec 2017	Nov 2017	Nov 2016
Indiana	3.1	3.4	4.0
US	3.9	3.9	4.5



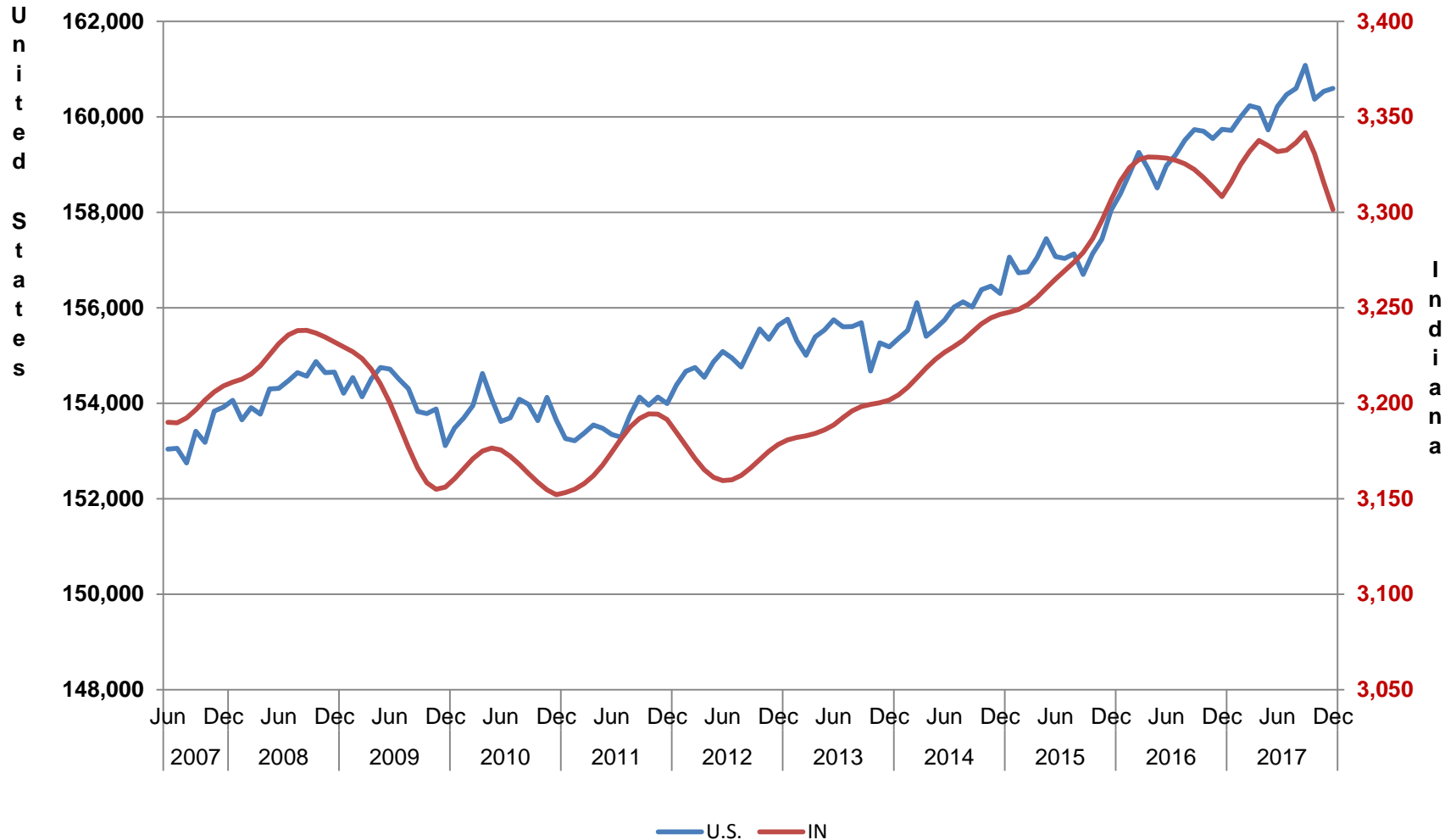
Indiana's December seasonally adjusted labor force is now at 3,301,415 down 14,195 from November. The number of employed is at 3,188,884 down 3,499 over the month. An estimated 112,531 individuals are currently unemployed and seeking employment.

Labor Force Change Since November 2016 Indiana Peak (seasonally adjusted)





Indiana & U.S. Labor Force, 2007-2017 (in 1000s)





The December Indiana labor force participation rate decreased by 0.3% percentage points to 63.6% and the U.S. rate remains at 62.7%.

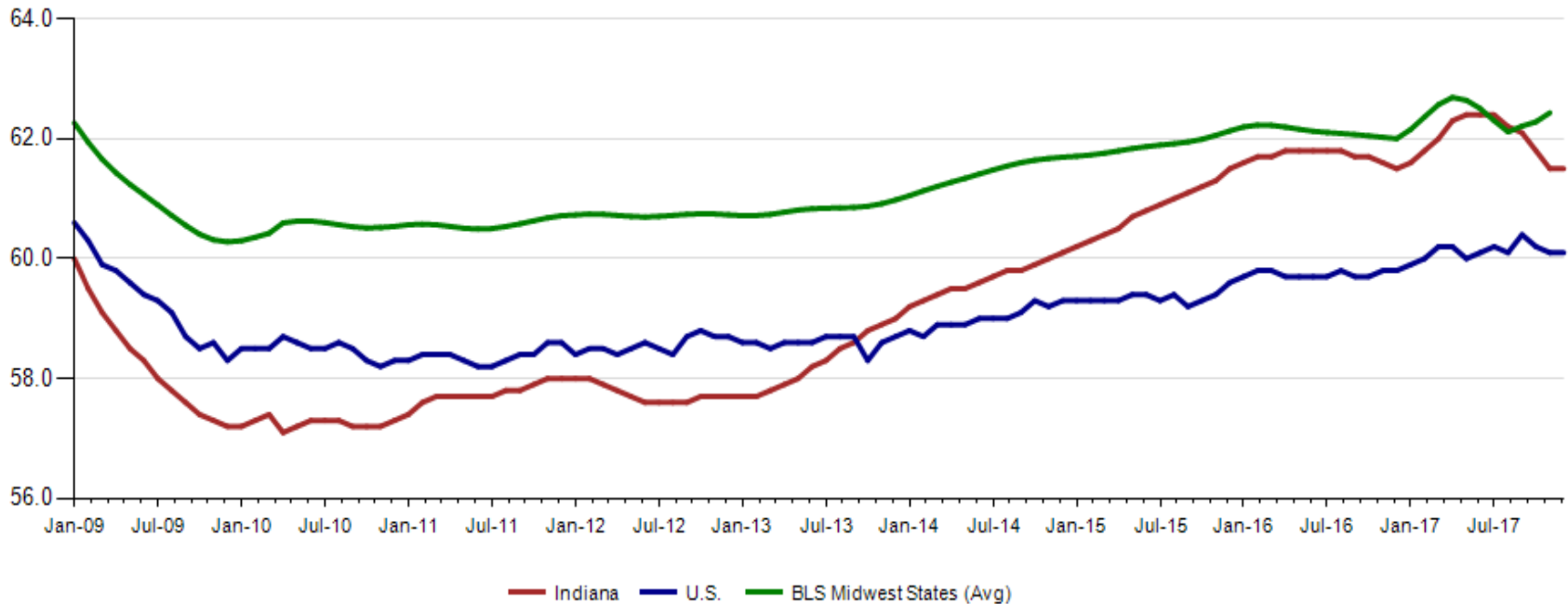
Labor Force Participation Rate





Indiana's employment to population rate for December 2017 is 61.5%. The December U.S. employment to population rate is 60.1%. The BLS Midwest Regional states rate is 62.4% (November 2017).

Employment to Population Ratio (seasonally adjusted)





Midwest Comparison Rates: Seasonally Adjusted Over the Year and Over the Month (confidential and preliminary)

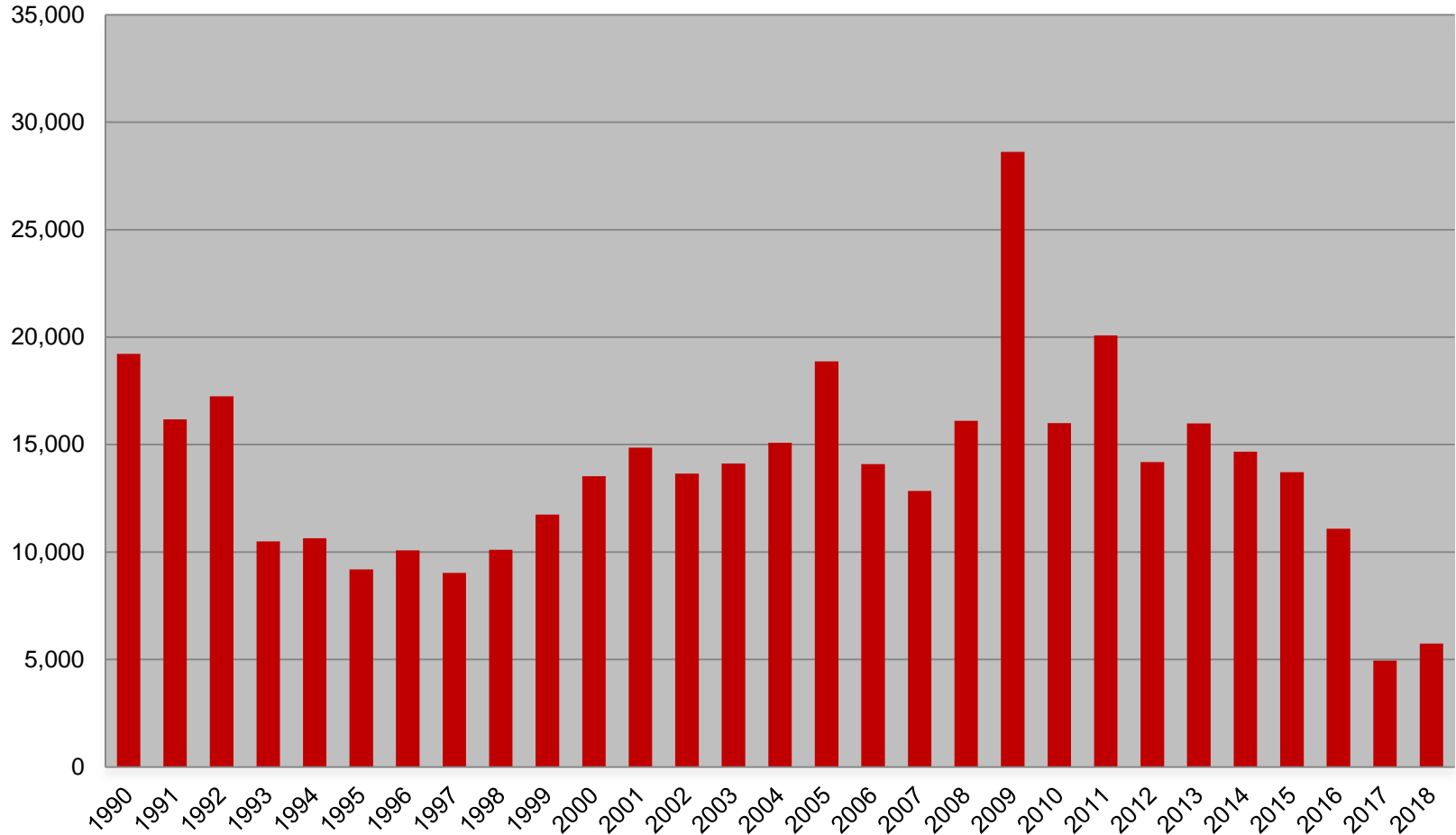
	December 2016	November 2017	December 2017	Monthly change	Yearly change
Indiana	4.0%	3.7%	3.4%	-0.3%	-0.6%
U.S.	4.7%	4.1%	4.1%	0.0%	-0.6%
Illinois	5.7%	4.9%	4.8%	-0.1%	-0.9%
Kentucky	4.8%	4.7%	4.4%	-0.3%	-0.4%
Michigan	5.1%	4.6%	4.7%	0.1%	-0.4%
Minnesota	4.0%	3.2%	3.1%	-0.1%	-0.9%
Ohio	5.0%	4.8%	4.7%	-0.1%	-0.3%
Wisconsin	4.1%	3.2%	3.0%	-0.2%	-1.1%

*2016 Benchmark



Weekly Initial Claims – Week 1

Total aggregated UI claims for the first week of each year as reported to ETA.





Regular UI Claims – Reference Week (12th of the month) Input to LAUS Unemployment Rate Model Declines over the month - and over the year

Without earnings – Reference week claims

	2006	2007	2008	2009	2010	2011	2012	2013	2014	2015	2016	2017	OTM Change	OTY Change
JANUARY	65,898	71,296	75,294	150,888	105,910	84,706	71,042	63,223	49,377	41,333	36,555	33,137	8,538	(3,418)
FEBRUARY	67,347	75,432	78,068	154,388	103,432	80,852	69,570	60,183	52,316	39,282	36,909	32,463	(674)	(4,446)
MARCH	59,716	64,936	74,759	157,257	93,469	71,696	60,752	54,578	45,928	35,755	32,439	32,141	(322)	(298)
APRIL	48,103	53,325	64,948	143,842	74,481	59,036	51,652	48,548	39,717	25,597	23,895	21,998	(10,143)	(1,897)
MAY	46,779	46,002	55,480	141,174	66,779	54,680	46,328	42,997	32,460	22,807	22,300	19,431	(2,567)	(2,869)
JUNE	45,533	46,350	57,228	136,670	67,996	55,021	46,820	41,722	29,524	22,030	22,025	16,722	(2,709)	(5,303)
JULY	53,424	51,141	72,032	121,336	69,447	58,031	47,268	44,597	30,845	22,341	22,326	15,775	(947)	(6,551)
AUGUST	45,021	43,887	61,985	103,509	62,976	51,710	42,134	39,998	26,061	21,472	20,737	15,692	(83)	(5,045)
SEPTEMBER	41,247	42,500	61,548	92,680	58,280	46,824	41,955	39,563	23,685	20,941	19,372	14,334	(1,358)	(5,038)
OCTOBER	42,487	42,313	67,306	86,275	58,317	46,909	39,467	37,778	23,768	19,917	19,143	14,266	(68)	(4,877)
NOVEMBER	43,868	45,362	81,466	82,451	58,846	51,201	41,018	38,517	25,315	21,199	19,547	14,347	81	(5,200)
DECEMBER	53,566	54,201	109,651	91,814	65,279	55,104	46,371	42,484	30,982	26,249	24,599	17,345	2,998	(7,254)

December 2017 average weekly hours for Indiana manufacturing production increased by 0.4 hours to 42.7. Indiana is ahead of the national manufacturing weekly hours of 42.5. BLS Region states were at 41.9 hours (November data).

Avg. Weekly Manufacturing Production Hours (non seasonally adjusted)

