



INDIANA
WORKFORCE
DEVELOPMENT
AND ITS **WorkOne** CENTERS

Indiana's Employment and Labor Force Estimates December 2016

01/18/2017



Key Points

- **The Indiana Unemployment Rate is 4.0% in December 2016.**
Nationally the rate is 4.7%.
- Indiana's rate has decreased 0.6 over the year from December 2015 and currently is 4.0%.
- Indiana's Labor Force decreased over the month by -15,689 with a decrease in employment of -10,556 and unemployment decreased by -5,133.
- Indiana's Labor Force increased 28,419 with a 45,330 increase in employment and a decrease in unemployment of 16,911 since the start of 2016.
- Indiana's Labor Force increased 49,474 year to year change (December 2015 – December 2016), and has increased 145,741 since January 2013.
- Indiana's Labor Force Participation rate decreased over the month and is currently 64.3%. This remains above the US Labor Force Participation rate which stands at 62.7%.
- Total private employment stands at 43,400 above the March 2000 Peak.
- Private employment is up 163,100 since January 2013.



Key Points

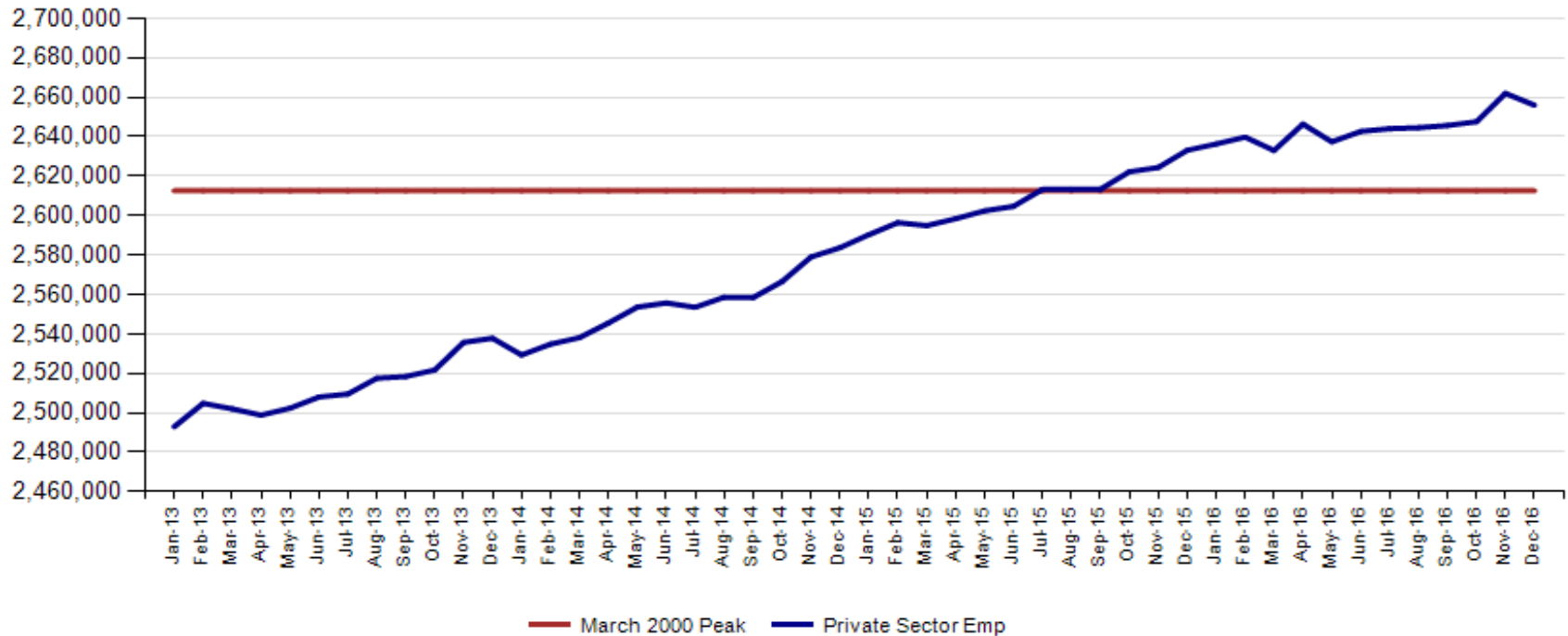
Indiana total private employment decreased 6,000 over the month and gains of 22,900 over the year. This is the 17th month above the prior peak of 2,612,600.

- Indiana private employment now stands at 2,656,000.
- Manufacturing had gains of 2,700.
- Construction had gains of 1,800.
- Private Educational & Health Services had declines of 5,100.
- Professional & Business Services had declines of 2,700.
- Trade, Transportation & Utilities had declines of 1,300.
- Financial Activities had declines 1,100.
- The All Other category had declines of 200.
- Leisure and Hospitality had declines of 100.



December Total private employment is now at 43,400 above the March 2000 Peak. This is the 18th month above the prior peak.

Indiana Private Sector Employment





December Indiana private sector employment decreased by 6,000 jobs over the month and is up 22,900 over the year. The monthly decrease was driven by a drop of 5,100 in Private Education & Health Services. This is a seasonal drop due to Christmas/Winter breaks.

IN Employment Change Over the Month, Year-to-Date and Over the Year (seasonally adjusted)

Industry	December 2015	November 2016	December 2016	Month Change	Y-to-D Change	Y-to-Y Change
Private Educational & Health Services	459.5	474.9	469.8	-5.1	10.3	10.3
.....Private Educational Services	73.2	76.1	70.2	-5.9	-3.0	-3.0
.....Health Care & Social Assistance	386.3	398.8	399.6	0.8	13.3	13.3
Manufacturing	520.2	516.3	519.0	2.7	-1.2	-1.2
Professional & Business Services	327.9	331.5	328.8	-2.7	0.9	0.9
Financial Activities	131.3	135.0	133.9	-1.1	2.6	2.6
Construction	131.0	130.0	131.8	1.8	0.8	0.8
Leisure and Hospitality	304.6	308.6	308.5	-0.1	3.9	3.9
Trade, Transportation & Utilities	592.9	598.9	597.6	-1.3	4.7	4.7
.....Trade	447.6	455.9	454.8	-1.1	7.2	7.2
.....Transportation, Warehousing & Utilities	145.3	143.0	142.8	-0.2	-2.5	-2.5
All Other	165.7	166.8	166.6	-0.2	0.9	0.9
Total Private	2,633.1	2,662.0	2,656.0	-6.0	22.9	22.9
Government (Includes Public Schools & Hospitals)	426.6	428.9	427.7	-1.2	1.1	1.1
Total Nonfarm	3,059.7	3,090.9	3,083.7	-7.2	24.0	24.0
United States Total Private	121,106.0	122,936.0	123,080.0	144.0	1,974.0	1,974.0



December Total Nonfarm is 66,500 over the March 2000 peak.

IN Statewide Estimates (seasonally adjusted) -- December 2016

Supersector	Private Empl. Peak March 2000	Private Empl. Trough July 2009	November 2016	December 2016	Change Since Peak	Change Since Trough	Month to Month Change
Private Educational & Health Services	330.1	411.1	474.9	469.8	139.7	58.7	-5.1
.....Private Educational Services	52.2	63.3	76.1	70.2	18.0	6.9	-5.9
.....Health Care & Social Assistance	277.9	347.8	398.8	399.6	121.7	51.8	0.8
Manufacturing	671.1	427.9	516.3	519.0	-152.1	91.1	2.7
Professional & Business Services	260.5	255.9	331.5	328.8	68.3	72.9	-2.7
Financial Activities	145.7	130.7	135.0	133.9	-11.8	3.2	-1.1
Construction	154.1	116.5	130.0	131.8	-22.3	15.3	1.8
Leisure and Hospitality	267.2	276.8	308.6	308.5	41.3	31.7	-0.1
Trade, Transportation & Utilities	617.5	545.7	598.9	597.6	-19.9	51.9	-1.3
.....Trade	485.1	421.6	455.9	454.8	-30.3	33.2	-1.1
.....Transportation, Warehousing & Utilities	132.4	124.1	143.0	142.8	10.4	18.7	-0.2
All Other	166.4	158.6	166.8	166.6	0.2	8.0	-0.2
Total Private	2,612.6	2,323.2	2,662.0	2,656.0	43.4	332.8	-6.0
Government (Includes Public Schools & Hospitals)	404.6	434.5	428.9	427.7	23.1	-6.8	-1.2
Total Nonfarm	3,017.2	2,757.7	3,090.9	3,083.7	66.5	326.0	-7.2
United States Total Private	110,875.0	108,170.0	122,936.0	123,080.0	12,205.0	14,910.0	144.0



Indiana job growth over the year remains under the National trend in private sector gains in December. Healthcare & Social Assistance, Financial Activities are growing faster than the US over the year. After a strong December Manufacturing is now growing faster than the U.S. in monthly and year to year comparisons.

IN Employment Change Compared to the U.S.

Industry	Indiana Month to Month	U.S. Month to Month	Indiana vs U.S. Change	Indiana Year-to-Date	U.S. Year-to-Date	Indiana vs U.S. Change	Indiana Year-to-Year	U.S. Year-to-Year	Indiana vs U.S. Change
Private Educational & Health Services	-1.1%	0.3%	UNDER	2.2%	2.6%	UNDER	2.2%	2.6%	UNDER
.....Private Educational Services	-7.8%	0.2%	UNDER	-4.1%	2.2%	UNDER	-4.1%	2.2%	UNDER
.....Health Care & Social Assistance	0.2%	0.3%	UNDER	3.4%	2.7%	OVER	3.4%	2.7%	OVER
Manufacturing	0.5%	0.1%	OVER	-0.2%	-0.4%	OVER	-0.2%	-0.4%	OVER
Professional & Business Services	-0.8%	0.1%	UNDER	0.3%	2.6%	UNDER	0.3%	2.6%	UNDER
Financial Activities	-0.8%	0.2%	UNDER	2.0%	1.9%	OVER	2.0%	1.9%	OVER
Construction	1.4%	0.0%	OVER	0.6%	1.5%	UNDER	0.6%	1.5%	UNDER
Leisure and Hospitality	0.0%	0.2%	UNDER	1.3%	1.9%	UNDER	1.3%	1.9%	UNDER
Trade, Transportation & Utilities	-0.2%	0.1%	UNDER	0.8%	1.4%	UNDER	0.8%	1.4%	UNDER
.....Trade	-0.2%	0.0%	UNDER	1.6%	1.4%	OVER	1.6%	1.4%	OVER
.....Transportation, Warehousing & Utils	-0.1%	0.3%	UNDER	-1.7%	1.2%	UNDER	-1.7%	1.2%	UNDER
All Other	-0.1%	-0.2%	OVER	0.5%	-0.3%	OVER	0.5%	-0.3%	OVER
Total Private	-0.2%	0.1%	UNDER	0.9%	1.6%	UNDER	0.9%	1.6%	UNDER
Government (Includes Public Schools & Hospitals)	-0.3%	0.1%	UNDER	0.3%	0.8%	UNDER	0.3%	0.8%	UNDER
Total Nonfarm	-0.2%	0.1%	UNDER	0.8%	1.5%	UNDER	0.8%	1.5%	UNDER



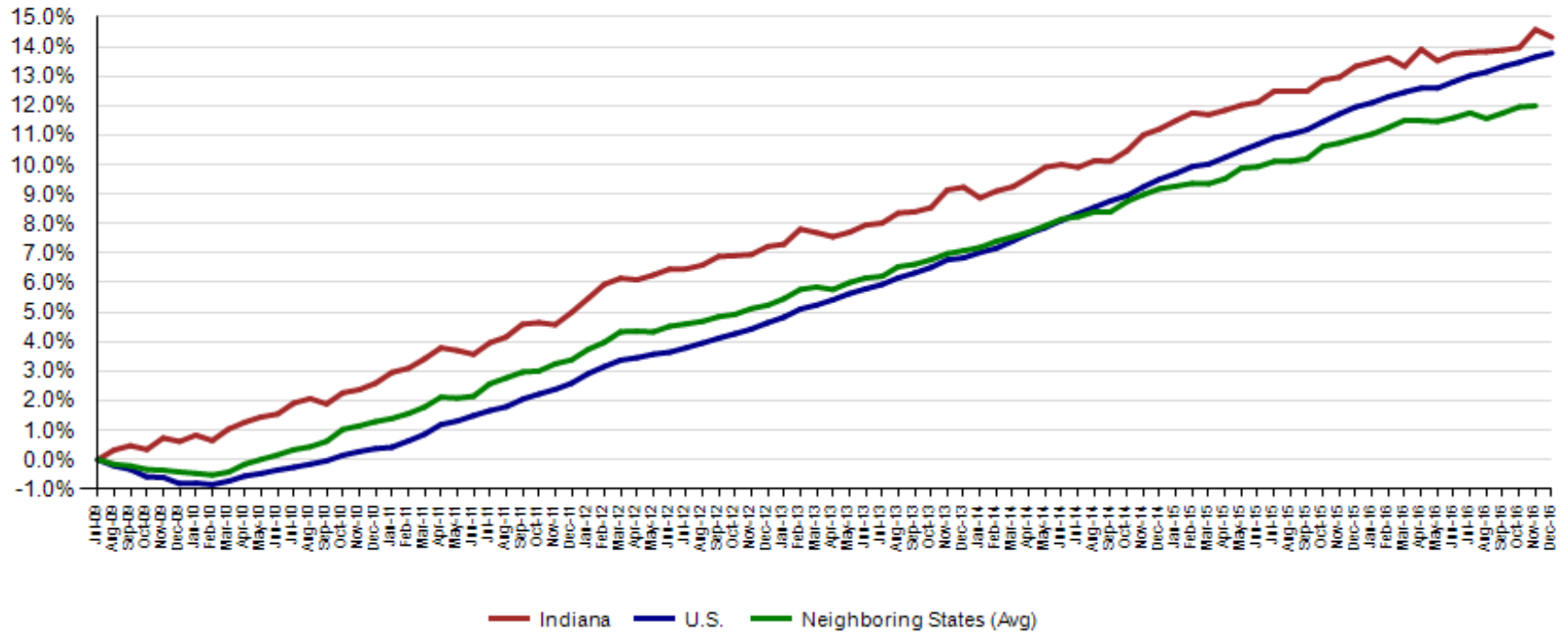
November Total Private preliminary estimates were revised up by 1,400. The change from October to November is now an increase of 14,500.

Revisions to November 2016 Estimates							
INDUSTRY TITLE	Oct	Nov Prel	Nov Rev	Revision	Chg from Oct	Prel Chg from Oct	
Total Nonfarm	3076.4	3089.5	3090.9	1.4	14.5	13.1	
Total Private	2647.6	2660.9	2662.0	1.1	14.4	13.3	
Goods Producing	652.6	652.4	652.4	0.0	-0.2	-0.2	
Service-Providing	2423.8	2437.1	2438.5	1.4	14.7	13.3	
Private Service Providing	1995.0	2008.5	2009.6	1.1	14.6	13.5	
Construction	131.7	130.1	130.0	-0.1	-1.7	-1.6	
Manufacturing	514.8	516.2	516.3	0.1	1.5	1.4	
Trade, Transportation, and Utilities	596.5	596.7	598.9	2.2	2.4	0.2	
Wholesale Trade	117.7	118.2	118.4	0.2	0.7	0.5	
Retail Trade	336.5	335.1	337.5	2.4	1.0	-1.4	
Transportation, Warehousing, and Utilities	142.3	143.4	143.0	-0.4	0.7	1.1	
Information	31.7	32.0	31.9	-0.1	0.2	0.3	
Financial Activities	133.5	135.0	135.0	0.0	1.5	1.5	
Finance and Insurance	98.3	99.6	99.2	-0.4	0.9	1.3	
Real Estate and Rental and Leasing	35.2	35.4	35.8	0.4	0.6	0.2	
Professional and Business Services	325.3	333.6	331.5	-2.1	6.2	8.3	
Professional, Scientific, and Technical Services	110.9	112.1	111.8	-0.3	0.9	1.2	
Management of Companies and Enterprises	33.9	33.6	33.6	0.0	-0.3	-0.3	
Admin & Support & Waste Mgmt & Remediation Services	180.5	187.9	186.1	-1.8	5.6	7.4	
Education and Health Services	473.7	474.5	474.9	0.4	1.2	0.8	
Educational Services	75.3	74.9	76.1	1.2	0.8	-0.4	
Health Care and Social Assistance	398.4	399.6	398.8	-0.8	0.4	1.2	
Leisure and Hospitality	307.0	308.0	308.6	0.6	1.6	1.0	
Other Services	127.3	128.7	128.8	0.1	1.5	1.4	
Government	428.8	428.6	428.9	0.3	0.1	-0.2	



Since the low point of employment in July 2009, private sector employment growth in Indiana has surpassed the U.S. (14.3% vs. 13.8%).

Private Sector Job Growth Since the Low Point of Employment in Indiana

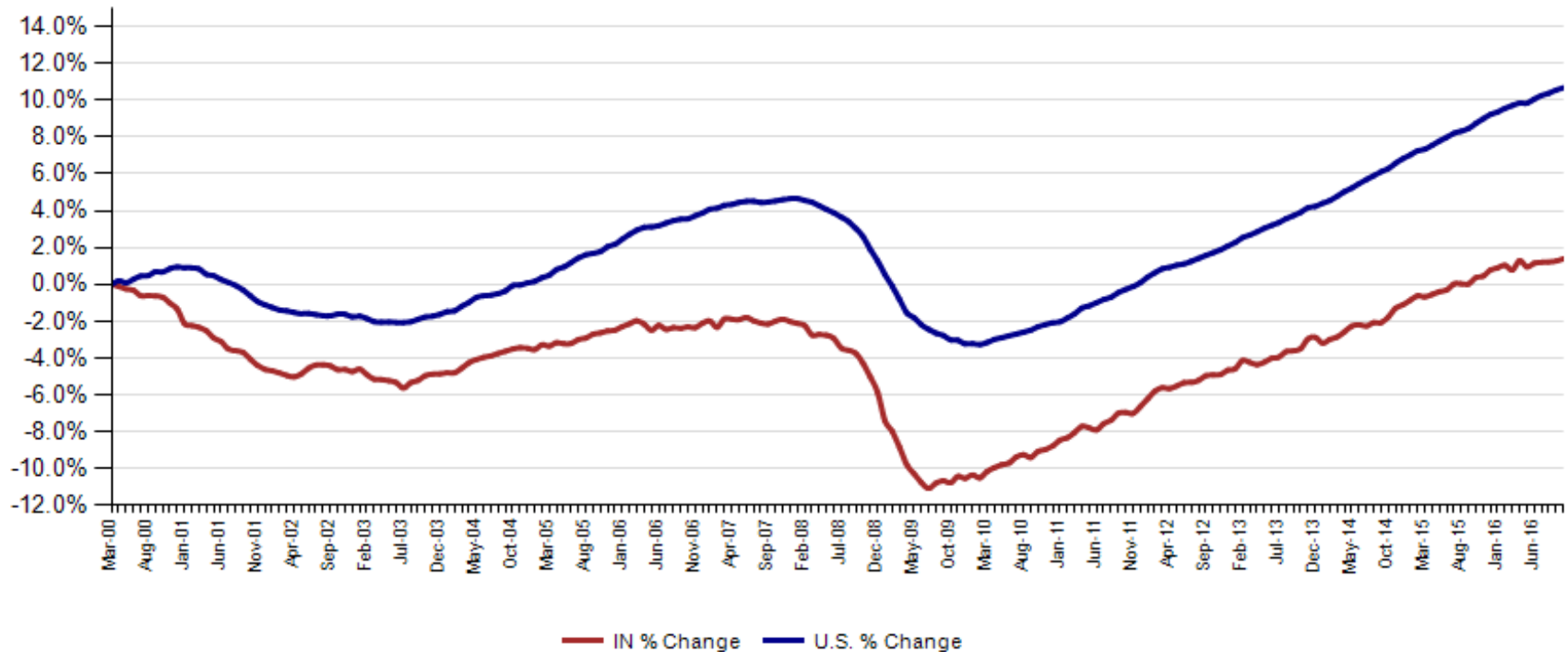


Source: Current Employment Statistics, seasonally adjusted



Since Indiana's high point of employment (March 2000), private sector employment growth in Indiana has lagged the U.S. (1.7% growth vs. 11% nationally).

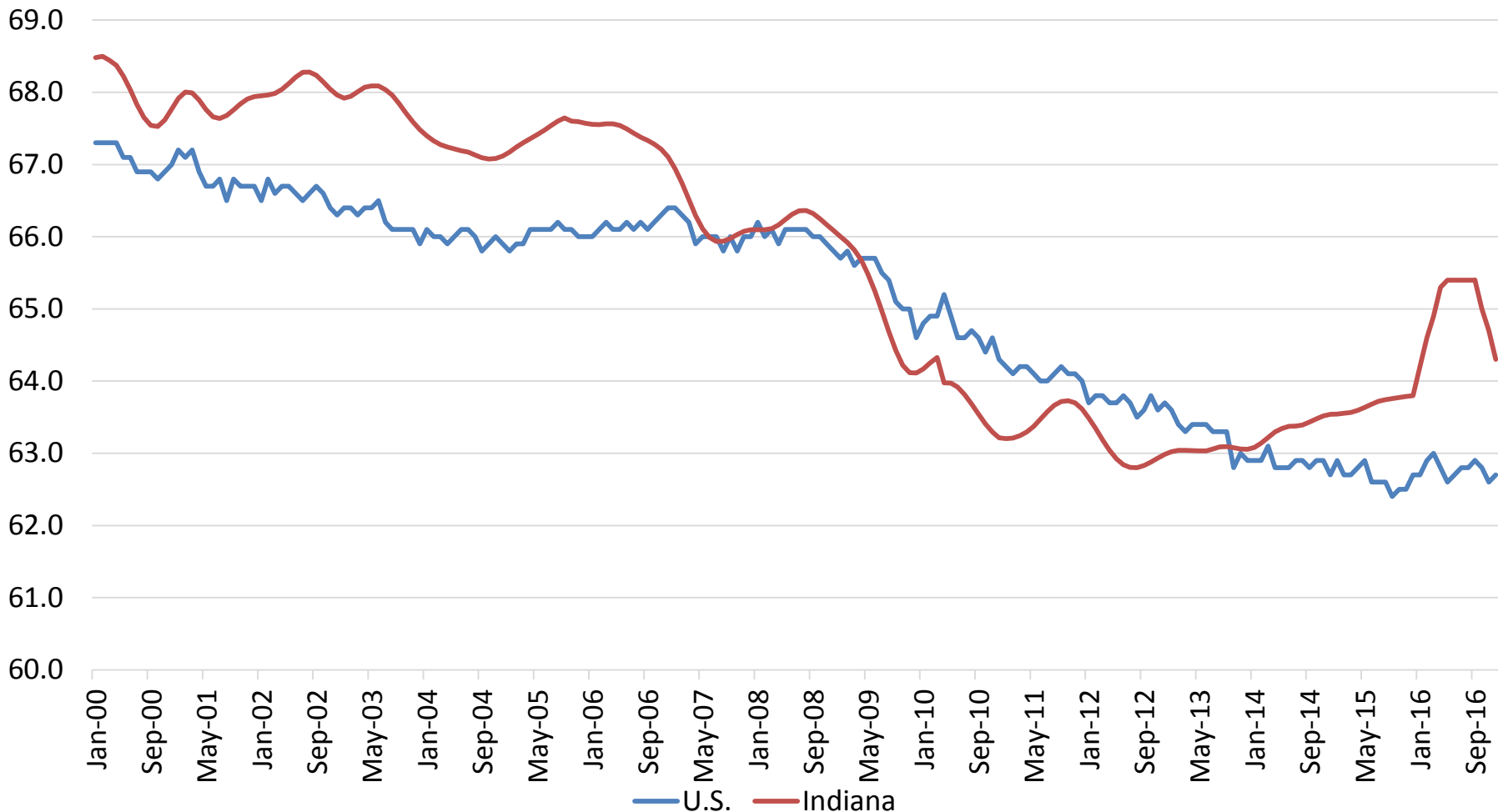
Private Sector Job Growth Since the Peak of Employment in Indiana



Source: Current Employment Statistics, seasonally adjusted



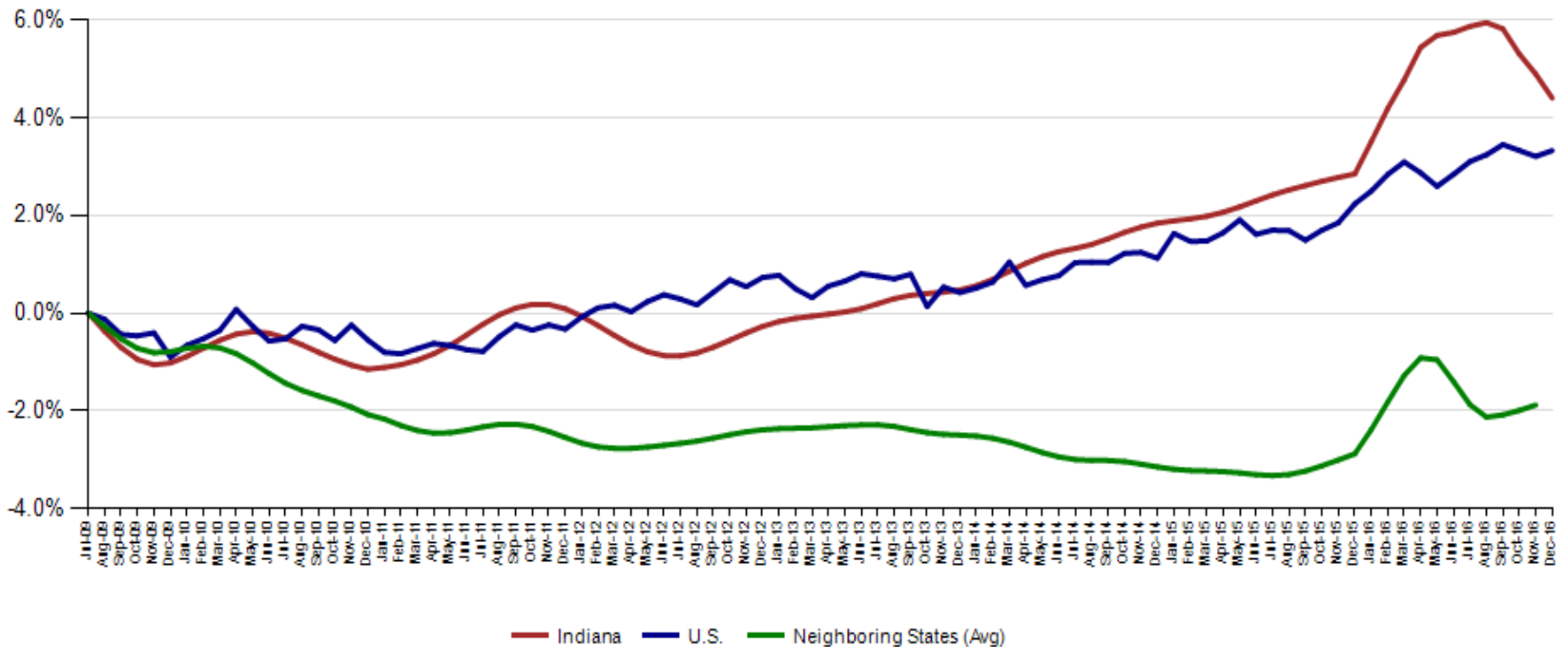
Indiana's December Labor Force lost 15,689 over the month. The Labor Force is now at 3,328,953 and the Participation Rate stands at 64.3%. The Labor Force has lost 49,291 since the peak in August 2016 but is still up 49,474 over the year.





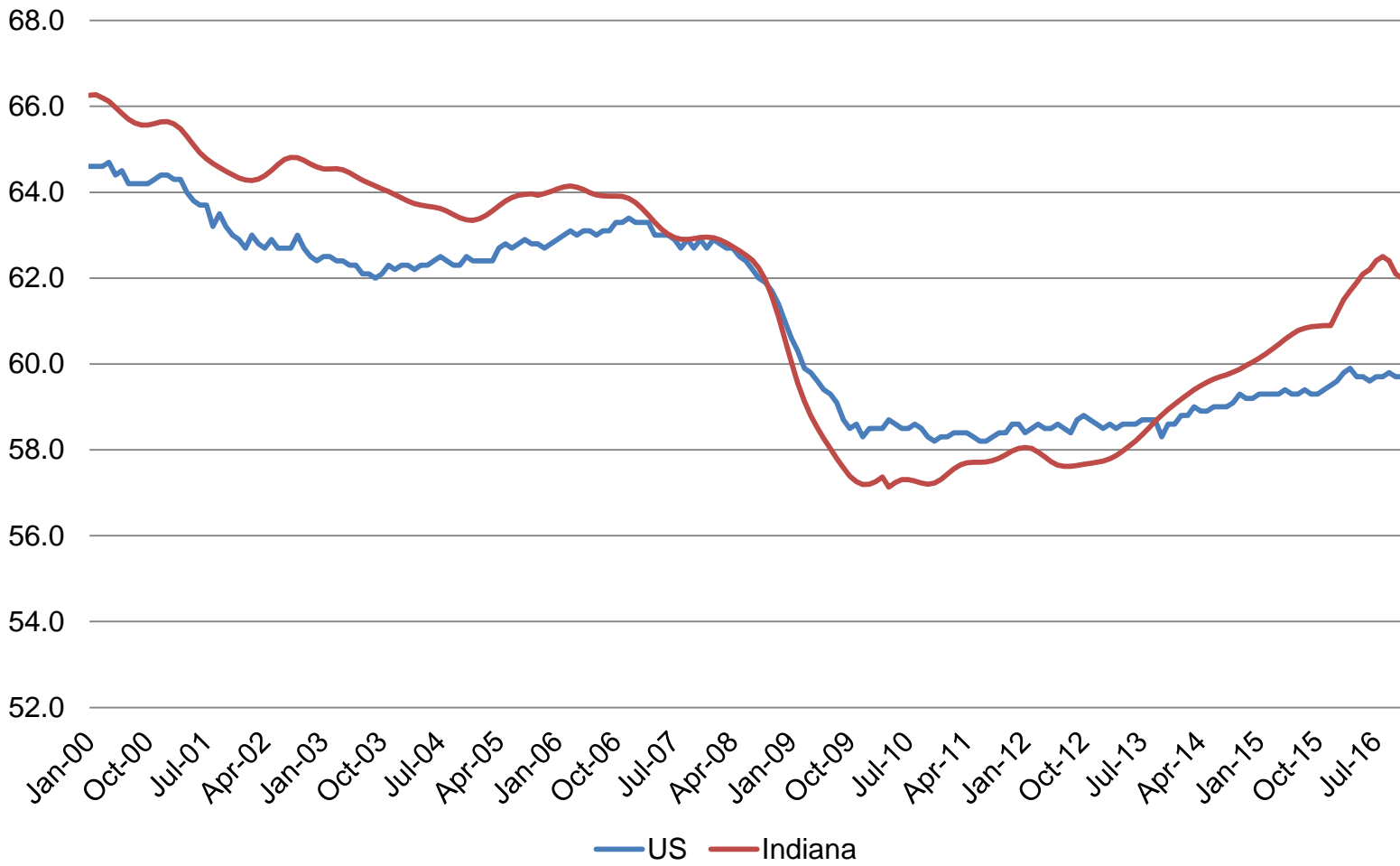
Indiana's Seasonally Adjusted Labor Force is now at 3,328,953 and the number of employed is at 3,194,602.

Labor Force Change Since July 2009 Indiana Trough (seasonally adjusted)



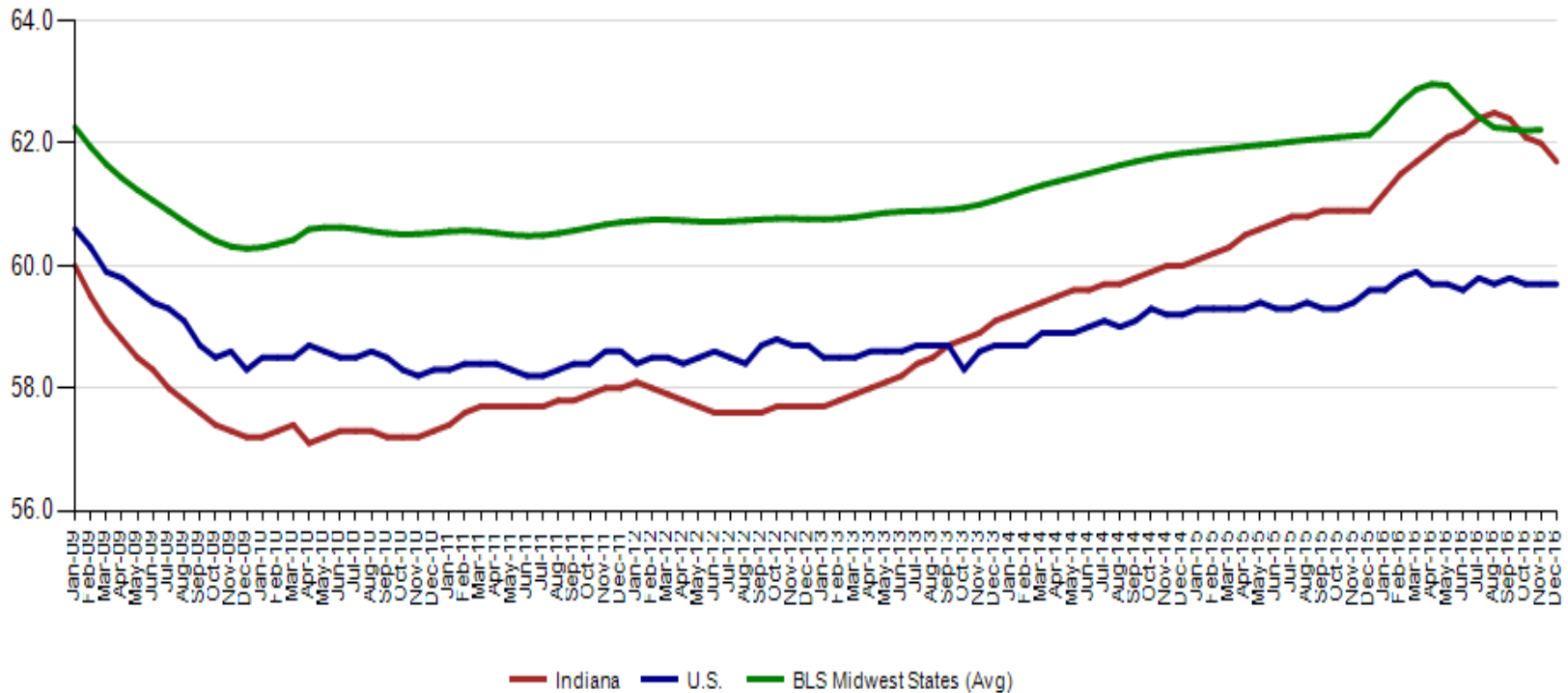


The December Indiana Employment to Population Ratio is 61.7% and the US Rate remained at 59.7%



Indiana's Employment to Population December rate is 61.7% The December US Employment to Population Ratio remains at 59.7% The BLS Regional States held at 62.2% (November 2016).

Employment to Population Ratio (seasonally adjusted)



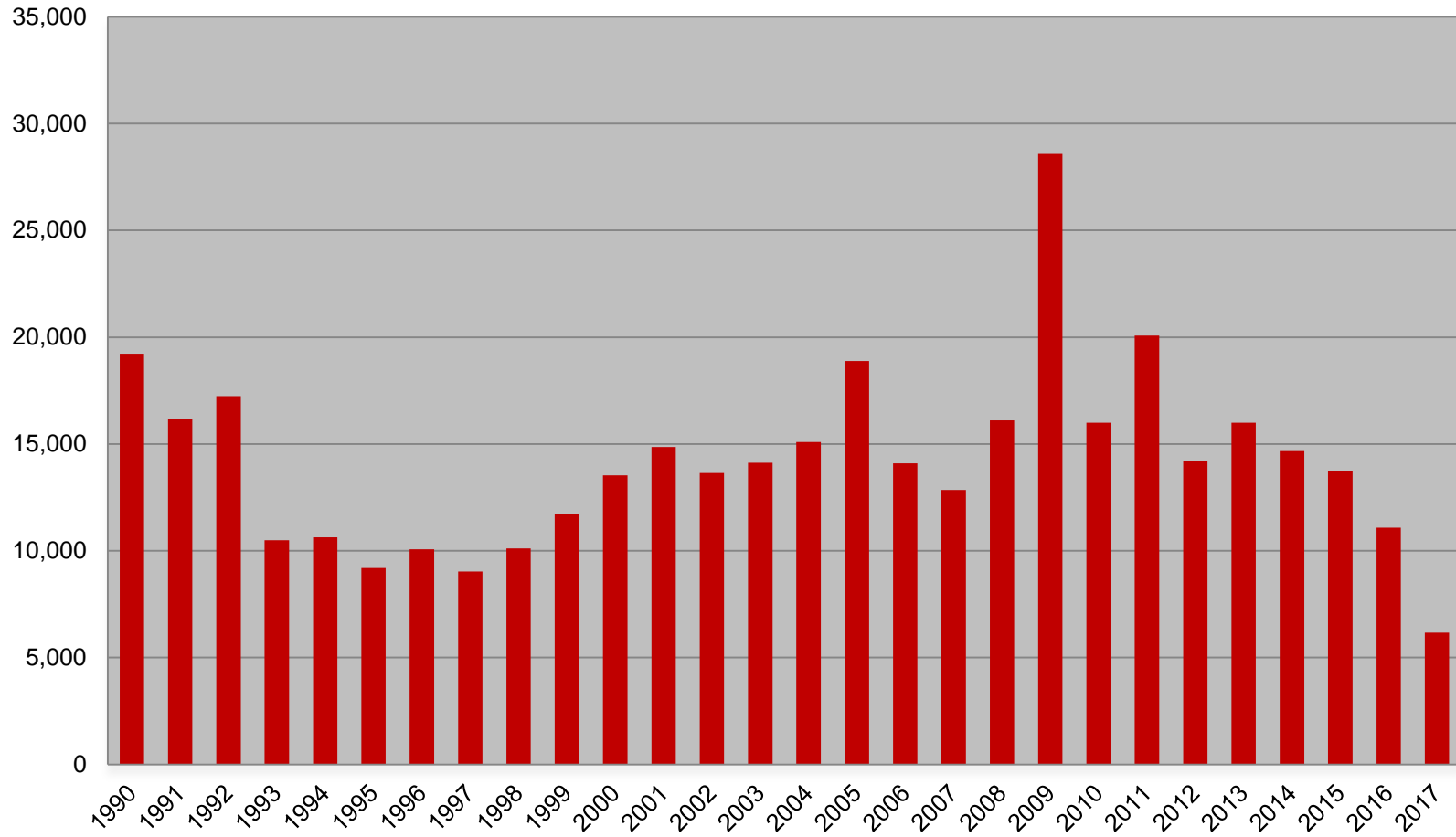


Midwest Comparison Rates: Seasonally
Adjusted Over the Year and Over the Month
(confidential and preliminary)

	December 2015	November 2016	December 2016	Monthly change	Yearly change
Indiana	4.6%	4.2%	4.0%	-0.2%	-0.6%
U.S.	5.0%	4.6%	4.7%	0.1%	-0.3%
Illinois	6.1%	5.6%		-5.6%	-6.1%
Kentucky	5.7%	4.8%		-4.8%	-5.7%
Michigan	5.1%	4.9%	5.0%	0.1%	-0.1%
Ohio	4.8%	4.9%	4.9%	0.0%	0.1%



Weekly Initial Claims – Week 1





Regular UI Claims – Reference Week (12th of the month) Input to LAUS Unemployment Rate Model Declines over the month - and over the year

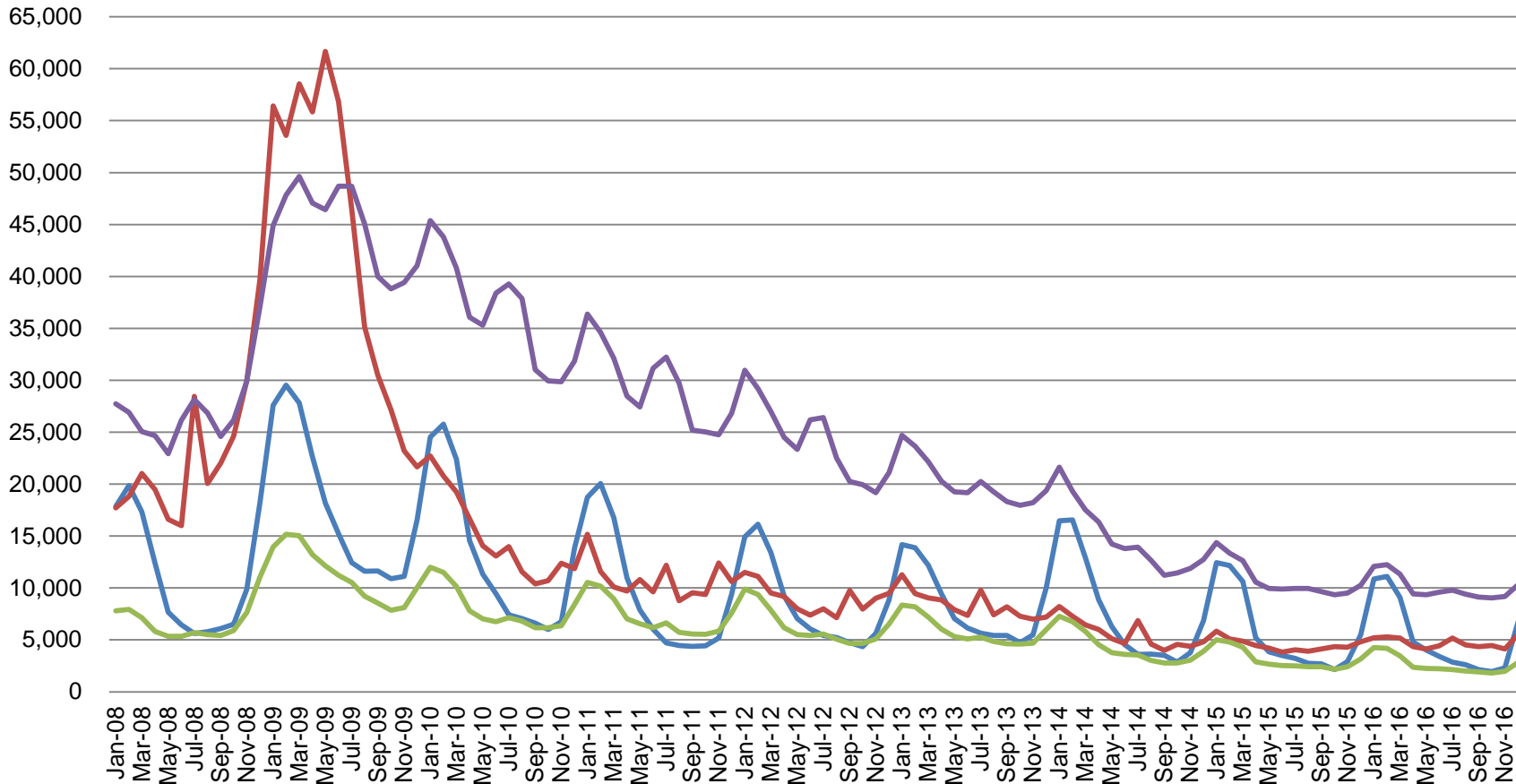
Without earnings – Reference week claims

	2006	2007	2008	2009	2010	2011	2012	2013	2014	2015	2016	OTM Change	OTY Change
JANUARY	65,898	71,296	75,294	150,888	105,910	84,706	71,042	63,223	49,377	41,333	36,555	10,306	(4,778)
FEBRUARY	67,347	75,432	78,068	154,388	103,432	80,852	69,570	60,183	52,316	39,282	36,909	354	(2,373)
MARCH	59,716	64,936	74,759	157,257	93,469	71,696	60,752	54,578	45,928	35,755	32,439	(4,470)	(3,316)
APRIL	48,103	53,325	64,948	143,842	74,481	59,036	51,652	48,548	39,717	25,597	23,895	(8,544)	(1,702)
MAY	46,779	46,002	55,480	141,174	66,779	54,680	46,328	42,997	32,460	22,807	22,300	(1,595)	(507)
JUNE	45,533	46,350	57,228	136,670	67,996	55,021	46,820	41,722	29,524	22,030	22,025	(275)	(5)
JULY	53,424	51,141	72,032	121,336	69,447	58,031	47,268	44,597	30,845	22,341	22,326	301	(15)
AUGUST	45,021	43,887	61,985	103,509	62,976	51,710	42,134	39,998	26,061	21,472	20,737	(1,589)	(735)
SEPTEMBER	41,247	42,500	61,548	92,680	58,280	46,824	41,955	39,563	23,685	20,941	19,372	(1,365)	(1,569)
OCTOBER	42,487	42,313	67,306	86,275	58,317	46,909	39,467	37,778	23,768	19,917	19,143	(229)	(774)
NOVEMBER	43,868	45,362	81,466	82,451	58,846	51,201	41,018	38,517	25,315	21,199	19,547	404	(1,652)
DECEMBER	53,566	54,201	109,651	91,814	65,279	55,104	46,371	42,484	30,982	26,249	24,599	5,052	(1,650)



Regular UI Claims by Industry

For the Reference Week of Each Month



Source: ETA 203

Construction Manufacturing Admin. and Support All Other



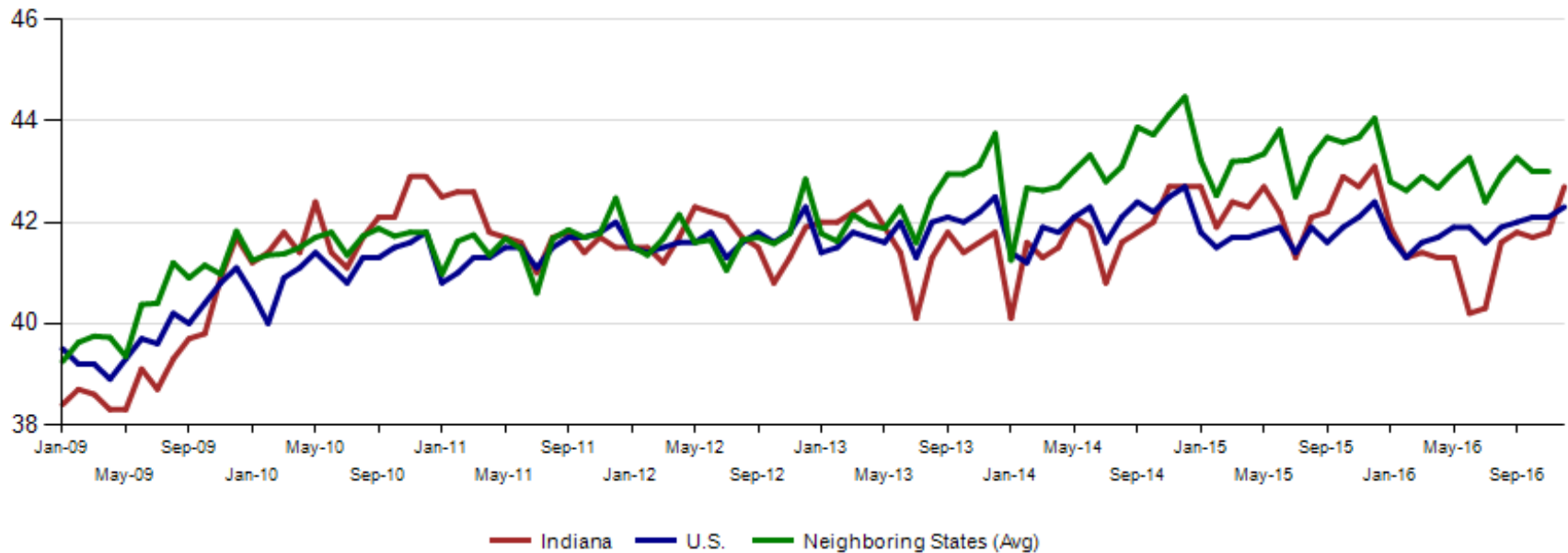
Internal and External Indiana Career Connect job orders are 51,993 in December. Health Care & Social Services, Retail Trade and Administrative & Support & Waste Management & Remediation Services (this includes temp help services) top this list.

NAICS_title	Dec-2016	Prior Year			Current Year			Change over Prior Year			Current Year Including External			Current Duration (days)
		October	November	December	October	November	December	October	November	December	October	November	December	December
Total		8,586	7,160	7,246	9,354	8,301	8,113	9%	16%	12%	69,535	67,011	51,993	58
Health Care and Social Services		1,947	1,715	1,854	1,985	1,919	1,845	2%	12%	0%	10,526	11,125	9,495	43
Retail Trade		757	648	715	937	704	691	24%	9%	-3%	10,911	11,060	8,942	45
Admin. & Support & Waste Mgt. & Rem. Services		1,138	869	926	1,263	1,032	1,096	11%	19%	18%	8,898	7,844	7,066	56
Transportation & Warehousing		427	363	363	418	366	404	-2%	1%	11%	7,072	5,197	4,506	83
Manufacturing		1,515	1,251	1,309	1,639	1,397	1,337	8%	12%	2%	4,535	3,747	3,330	65
Accommodation and Food Services		255	151	192	308	338	230	21%	124%	20%	8,361	7,880	3,177	57
Professional, Scientific, and Technical Services		659	588	466	664	646	570	1%	10%	22%	3,805	3,508	2,818	75
Finance and Insurance		232	168	198	253	189	246	9%	13%	24%	2,446	2,733	2,643	88
Educational Services		189	127	126	582	515	602	208%	306%	378%	2,489	2,494	2,280	29
Wholesale Trade		432	363	322	438	364	344	1%	0%	7%	1,883	2,112	1,786	42
Public Administration		163	207	146	107	134	83	-34%	-35%	-43%	1,850	2,430	1,499	116
Information		284	214	205	224	177	139	-21%	-17%	-32%	1,622	2,683	1,178	54
Other Services(Except Public Administration)		159	175	124	174	177	192	9%	1%	55%	1,382	1,061	911	119
Real Estate and Rental and Leasing		98	81	85	111	131	89	13%	62%	5%	1,831	1,394	808	66
Management of Companies and Enterprises		26	21	19	6	3	11	-77%	-86%	-42%	996	773	556	159
Construction		152	100	99	132	93	101	-13%	-7%	2%	475	514	476	105
Utilities		96	68	56	70	73	69	-27%	7%	23%	174	187	248	45
Arts, Entertainment, and Recreation		16	16	12	17	9	18	6%	-44%	50%	220	185	177	66
Agriculture, Forestry, Fishing and Hunting		28	20	14	19	17	17	-32%	-15%	21%	37	44	44	96
Mining		3	8	6	4	10	13	33%	25%	117%	19	33	37	34
Unallocated		10	7	9	3	7	16	-70%	0%	78%	3	7	16	191



Average weekly hours for Indiana manufacturing increased to 42.7 surpassing the National manufacturing weekly hours of 42.3. This is the first time in nine months that Indiana rose above the National average. Neighboring states were at 43.0 hours (November data).

Avg. Weekly Manufacturing Production Hours (non seasonally adjusted)





From 2010 to 2015, Manufacturing has had the largest total job increases of 70,674. Management of Companies and Enterprises had the largest percentage growth (23.6%) for an increase of 6,364 jobs.

INDIANA ANNUAL AVERAGE EMPLOYMENT BY INDUSTRY				
Sorted by Total Employment gains from 2010 to 2015				
Industry	2010	2015	Change	% Change
Total	<u>2,707,261</u>	<u>2,939,503</u>	<u>232,242</u>	8.6%
Manufacturing	448,191	518,865	<u>70,674</u>	15.8%
Administrative and Waste Services	151,921	187,346	<u>35,425</u>	23.3%
Accommodation and Food Services	232,526	261,823	<u>29,297</u>	12.6%
Health Care and Social Assistance	384,126	411,908	<u>27,782</u>	7.2%
Retail Trade	304,717	324,881	<u>20,164</u>	6.6%
Professional and Technical Services	96,781	109,838	<u>13,057</u>	13.5%
Transportation and Warehousing	122,521	135,189	<u>12,668</u>	10.3%
Construction	115,662	127,091	<u>11,429</u>	9.9%
Management of Companies and Enterprises	26,996	33,360	<u>6,364</u>	23.6%
Wholesale Trade	113,873	119,324	<u>5,451</u>	4.8%
Other Services	79,800	85,000	<u>5,200</u>	6.5%
Agriculture, Forestry, Fishing, and Hunting	12,951	14,745	<u>1,794</u>	13.9%
Finance and Insurance	93,221	94,959	<u>1,738</u>	1.9%
Real Estate and Rental and Leasing	31,784	33,400	<u>1,616</u>	5.1%
Mining	6,269	6,525	<u>256</u>	4.1%
Arts, Entertainment, and Recreation	42,273	41,697	<u>-576</u>	-1.4%
Utilities	16,443	15,731	<u>-712</u>	-4.3%
Educational Services	252,551	251,368	<u>-1,183</u>	-0.5%
Information	42,351	39,864	<u>-2,487</u>	-5.9%
Public Administration	132,304	126,589	<u>-5,715</u>	-4.3%



Manufacturing has recovered many jobs since the recession but wages have increased slowly. Industries with the largest percentage gain ranked low in total jobs gained. Finance and Insurance ranked 13th in job growth and Real Estate ranked 14th.

INDIANA AVERAGE WEEKLY WAGES BY INDUSTRY (2010 and 2015 comparison)				
	2009	2010	2015	% Change From 2010
Finance and Insurance	\$1,004	\$1,044	\$1,277	22.3%
Real Estate and Rental and Leasing	\$632	\$655	\$799	22.0%
Agriculture, Forestry, Fishing, and Hunting	\$580	\$586	\$705	20.3%
Management of Companies and Enterprises	\$1,387	\$1,469	\$1,758	19.7%
Utilities	\$1,374	\$1,435	\$1,698	18.3%
Wholesale Trade	\$1,000	\$1,030	\$1,203	16.8%
Professional and Technical Services	\$1,029	\$1,053	\$1,221	16.0%
Other Services	\$492	\$503	\$582	15.7%
Information	\$840	\$857	\$977	14.0%
Health Care and Social Assistance	\$770	\$776	\$880	13.4%
Transportation and Warehousing	\$747	\$764	\$854	11.8%
Mining	\$1,112	\$1,182	\$1,321	11.8%
Accommodation and Food Services	\$249	\$257	\$287	11.7%
Retail Trade	\$440	\$452	\$501	10.8%
Public Administration	\$772	\$782	\$857	9.6%
Administrative and Waste Services	\$512	\$511	\$559	9.4%
Construction	\$905	\$951	\$1,034	8.7%
Manufacturing	\$1,007	\$1,046	\$1,135	8.5%
Arts, Entertainment, and Recreation	\$545	\$564	\$600	6.4%
Educational Services	\$705	\$710	\$752	5.9%