



INDIANA
DEPARTMENT OF
WORKFORCE
DEVELOPMENT

Indiana's Employment and Labor Force Estimates August 2018

09/19/2018



Key Points

- **Indiana's unemployment rate increased by 0.1% over the month to 3.5% for August 2018. The U.S. rate remained at 3.9%.**
- **Indiana's rate has decreased 0.1% over the year from August 2017.**
- Indiana's Labor Force increased over the month by 11,085; due to an increase in residence employment of 8,491 and an increase in unemployment of 2,594.
- Indiana's Labor Force has increased 65,741 over the year.
- Indiana's Labor Force Participation Rate is at 65.0%. This is above the U.S. Labor Force Participation Rate of 62.7%.

Key Points

- Indiana's total private employment increased by 3,600 jobs over the month and had gains of 27,600 over the year.
- Indiana private employment now stands at 2,706,600.

Jobs gained over the month	
Financial Activities	2,300
Construction	1,600
Private Educational & Health Services	1,600
Trade, Transportation & Utilities	1,400
Leisure and Hospitality	600
Jobs lost over the month	
Manufacturing	-2,000
All Other	-1,600
Professional & Business Services	-300



State Time Series Analysis and Review System (**STARS**), sends each state a statistical review of their Labor Force estimates every month. This is a multi-page statistical review of each month's data. This is not published by most states.

***Gen4.5 STARS Monthly Estimation Tables, Official
Indiana, 2018***

Table 1: Year-to-Date Benchmark Model Estimates

Table 1a: Smoothed Seasonally Adjusted

(SSA Est. appear as the seasonally adjusted in BLS and State official publications and databases)

Month	Labor Force		Employment		Unemployment		
	Level	LFP	Level	EP	Level	Rate	Error Range ⁺
JAN	3,313,103	63.7	3,203,741	61.6	109,362	3.3	2.8- 3.8
FEB	3,315,405	63.7	3,208,242	61.7	107,163	3.2	2.7- 3.8
MAR	3,323,026	63.9	* 3,217,955	61.8	105,071	3.2	2.6- 3.7
APR	**3,335,033	* 64.1	**3,229,231	* 62.0	105,802	3.2	2.6- 3.7
MAY	**3,350,540	**64.3	**3,242,074	**62.2	108,466	3.2	2.7- 3.8
JUN	**3,365,058	**64.6	**3,252,823	* 62.4	112,235	3.3	2.8- 3.9
JUL	**3,381,289	**64.8	**3,266,103	**62.6	115,186	3.4	2.9- 3.9
AUG	* 3,392,374	65.0	* 3,274,594	62.7	117,780	3.5	3.0- 4.0



Employed persons (Current Population Survey)

Persons 16 years and over in the civilian noninstitutional population who, during the reference week, (a) did any work at all (at least 1 hour) as paid employees; worked in their own business, profession, or on their own farm, or worked 15 hours or more as unpaid workers in an enterprise operated by a member of the family; and (b) all those who were not working but who had jobs or businesses from which they were temporarily absent because of vacation, illness, bad weather, childcare problems, maternity or paternity leave, labor-management dispute, job training, or other family or personal reasons, whether or not they were paid for the time off or were seeking other jobs. Each employed person is counted only once, even if he or she holds more than one job. Excluded are persons whose only activity consisted of work around their own house (painting, repairing, or own home housework) or volunteer work for religious, charitable, and other organizations.

Unemployed persons (Current Population Survey)

Persons aged 16 years and older who had no employment during the reference week, were available for work, except for temporary illness, and had made specific efforts to find employment sometime during the 4-week period ending with the reference week. Persons who were waiting to be recalled to a job from which they had been laid off need not have been looking for work to be classified as unemployed.

Marginally attached workers (Current Population Survey)

Persons not in the labor force who want and are available for work, and who have looked for a job sometime in the prior 12 months (or since the end of their last job if they held one within the past 12 months), but were not counted as unemployed because they had not searched for work in the 4 weeks preceding the survey. Discouraged workers are a subset of the marginally attached.

Discouraged workers (Current Population Survey)

Persons not in the labor force who want and are available for a job and who have looked for work sometime in the past 12 months (or since the end of their last job if they held one within the past 12 months), but who are not currently looking because they believe there are no jobs available or there are none for which they would qualify.



Current Employment Statistics (CES) Compared to Local Area Unemployment Statistics (LAUS)

LAUS (Labor Force by Residence)

- An estimate of employment based on where the employee lives, rather than where they work
- **This is a count of people, not jobs**
- Used in calculating the labor force

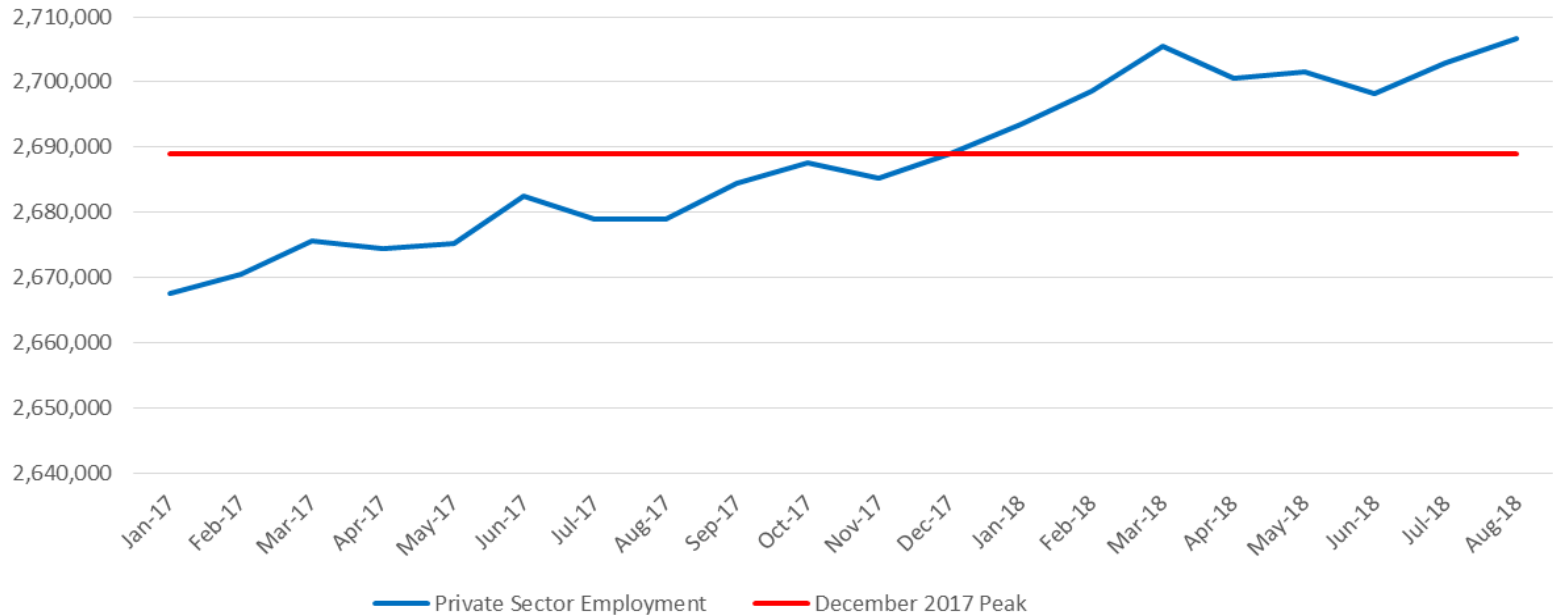
CES (Employment by Job)

- An estimate or count of employment based on the location of the job regardless of the worker's residence
- Also called nonag wage and salary or nonfarm employment
- **This counts jobs, not people**
- Used in Quarterly Census of Employment and Wages (QCEW) , Occupational Employment Statistics (OES) and CES data



August 2018 total private employment is 17,700 above the December 2017 peak.

Indiana Private Sector Employment





August 2018 Indiana private sector employment increased by 3,600 jobs over the month and is up 27,600 over the year. Financial Activities gained 2,300 jobs and Private Educational & Health Services as well as Construction each gained 1,600 jobs over the month. Manufacturing lost 2,000 jobs over the month.

IN Employment Change Over the Month, Year-to-Date and Over the Year (seasonally adjusted)

Industry	August 2017	December 2017	July 2018	August 2018	Month Change	Y-to-D Change	Y-to-Y Change
Private Educational & Health Services	470.4	476.7	473.1	474.7	1.6	-2.0	4.3
.....Private Educational Services	64.7	63.8	61.7	62.5	0.8	-1.3	-2.2
.....Health Care & Social Assistance	405.7	412.9	411.4	412.2	0.8	-0.7	6.5
Manufacturing	530.9	532.7	536.2	534.2	-2.0	1.5	3.3
Professional & Business Services	338.1	337.7	343.3	343.0	-0.3	5.3	4.9
Financial Activities	135.8	135.8	137.5	139.8	2.3	4.0	4.0
Construction	137.7	138.7	143.5	145.1	1.6	6.4	7.4
Leisure and Hospitality	307.2	306.6	304.9	305.5	0.6	-1.1	-1.7
Trade, Transportation & Utilities	595.8	598.1	605.7	607.1	1.4	9.0	11.3
.....Trade	451.2	452.4	459.0	458.9	-0.1	6.5	7.7
.....Transportation, Warehousing & Utilities	144.6	145.7	146.7	148.2	1.5	2.5	3.6
All Other	163.1	162.6	158.8	157.2	-1.6	-5.4	-5.9
Total Private	2,679.0	2,688.9	2,703.0	2,706.6	3.6	17.7	27.6
Government (Includes Public Schools & Hospitals)	430.3	426.0	427.4	429.7	2.3	3.7	-0.6
Total Nonfarm	3,109.3	3,114.9	3,130.4	3,136.3	5.9	21.4	27.0
United States Total Private	124,610.0	125,294.0	126,735.0	126,939.0	204.0	1,645.0	2,329.0

All Other includes: Mining and Logging, Information, Repair and Maintenance Services, Personal & Laundry Services, Religious, Grant Making, Civic, Professional and Similar Organizations.

Source: Current Employment Statistics, seasonally adjusted



August 2018 estimates show Indiana has gained 383,400 in Private jobs since the July 2009 trough. Manufacturing has accounted for 107,300 of those jobs. Construction has gained 28,600.

IN Statewide Estimates (seasonally adjusted) -- August 2018

Supersector	Private Empl. Peak Dec 2017	Private Empl. Trough July 2009	July 2018	August 2018	Month to Month Change	Change Since Peak	Change Since Trough	% Month to Month Change
Private Educational & Health Services	476.7	411.1	473.1	474.7	1.6	-2.0	63.6	0.3%
.....Private Educational Services	63.8	63.3	61.7	62.5	0.8	-1.3	-0.8	1.3%
.....Health Care & Social Assistance	412.9	347.8	411.4	412.2	0.8	-0.7	64.4	0.2%
Manufacturing	532.7	426.9	536.2	534.2	-2.0	1.5	107.3	-0.4%
Professional & Business Services	337.7	256.9	343.3	343.0	-0.3	5.3	86.1	-0.1%
Financial Activities	135.8	130.7	137.5	139.8	2.3	4.0	9.1	1.7%
Construction	138.7	116.5	143.5	145.1	1.6	6.4	28.6	1.1%
Leisure and Hospitality	306.6	276.8	304.9	305.5	0.6	-1.1	28.7	0.2%
Trade, Transportation & Utilities	598.1	545.7	605.7	607.1	1.4	9.0	61.4	0.2%
.....Trade	452.4	421.6	459.0	458.9	-0.1	6.5	37.3	0.0%
.....Transportation, Warehousing & Utilities	145.7	124.1	146.7	148.2	1.5	2.5	24.1	1.0%
All Other	162.6	158.6	158.8	157.2	-1.6	-5.4	-1.4	-1.0%
Total Private	2,688.9	2,323.2	2,703.0	2,706.6	3.6	17.7	383.4	0.1%
Government (Includes Public Schools & Hospitals)	426.0	434.5	427.4	429.7	2.3	3.7	-4.8	0.5%
Total Nonfarm	3,114.9	2,757.7	3,130.4	3,136.3	5.9	21.4	378.6	0.2%
United States Total Private	125,294.0	108,159.0	126,735.0	126,939.0	204.0	1,645.0	18,780.0	0.2%

Source: Current Employment Statistics, seasonally adjusted



August Indiana private sector increased by 0.1% compared to the national growth of 0.2%. Several Indiana industries showed a gain over the month. Construction, Finance as well as Trade, Transportation & Utilities have exceeded the U.S. over the month, year to date and year to year.

IN Employment Change Compared to the U.S.

Industry	Indiana Month to Month	U.S. Month to Month	Indiana vs U.S. Change
Private Educational & Health Services	0.3%	0.2%	OVER
.....Private Educational Services	1.3%	0.3%	OVER
.....Health Care & Social Assistance	0.2%	0.2%	UNDER
Manufacturing	-0.4%	0.0%	UNDER
Professional & Business Services	-0.1%	0.3%	UNDER
Financial Activities	1.7%	0.1%	OVER
Construction	1.1%	0.3%	OVER
Leisure and Hospitality	0.2%	0.1%	OVER
Trade, Transportation & Utilities	0.2%	0.1%	OVER
.....Trade	0.0%	0.1%	UNDER
.....Transportation, Warehousing & Utils	1.0%	0.3%	OVER
All Other	-1.0%	0.1%	UNDER
Total Private	0.1%	0.2%	UNDER
Government (Includes Public Schools & Hospitals)	0.5%	0.0%	OVER
Total Nonfarm	0.2%	0.1%	OVER

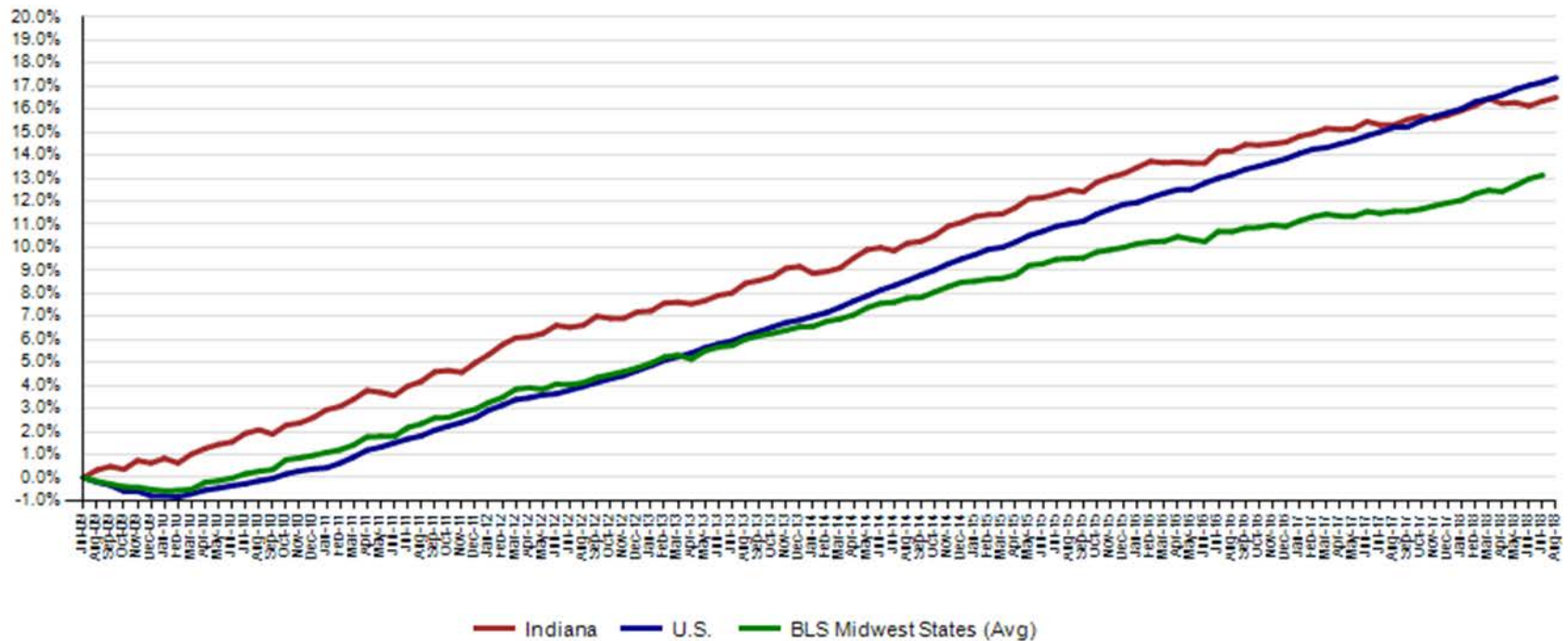
Indiana Year-to-Date	U.S. Year-to-Date	Indiana vs U.S. Change
-0.4%	1.5%	UNDER
-2.0%	1.9%	UNDER
-0.2%	1.4%	UNDER
0.3%	1.3%	UNDER
1.6%	1.9%	UNDER
2.9%	0.9%	OVER
4.6%	2.6%	OVER
-0.4%	1.0%	UNDER
1.5%	0.8%	OVER
1.4%	0.5%	OVER
1.7%	1.9%	UNDER
-3.3%	1.0%	UNDER
0.7%	1.3%	UNDER
0.9%	0.0%	OVER
0.7%	1.1%	UNDER

Indiana Year-to-Year	U.S. Year-to-Year	Indiana vs U.S. Change
0.9%	1.9%	UNDER
-3.4%	1.7%	UNDER
1.6%	2.0%	UNDER
0.6%	2.0%	UNDER
1.4%	2.5%	UNDER
2.9%	1.3%	OVER
5.4%	4.3%	OVER
-0.6%	1.6%	UNDER
1.9%	1.2%	OVER
1.7%	0.7%	OVER
2.5%	3.0%	UNDER
-3.6%	1.3%	UNDER
1.0%	1.9%	UNDER
-0.1%	0.0%	UNDER
0.9%	1.6%	UNDER

Source: Current Employment Statistics, seasonally adjusted

Since the low point of employment in July 2009, private sector employment growth for Indiana trails the U.S. growth rate. Indiana is now at 16.5% while the U.S. is at 17.4% through August 2018. BLS Midwest Regional states have grown at 13.1% (July) during this time frame.

Private Sector Job Growth Since the Low Point of Employment in Indiana

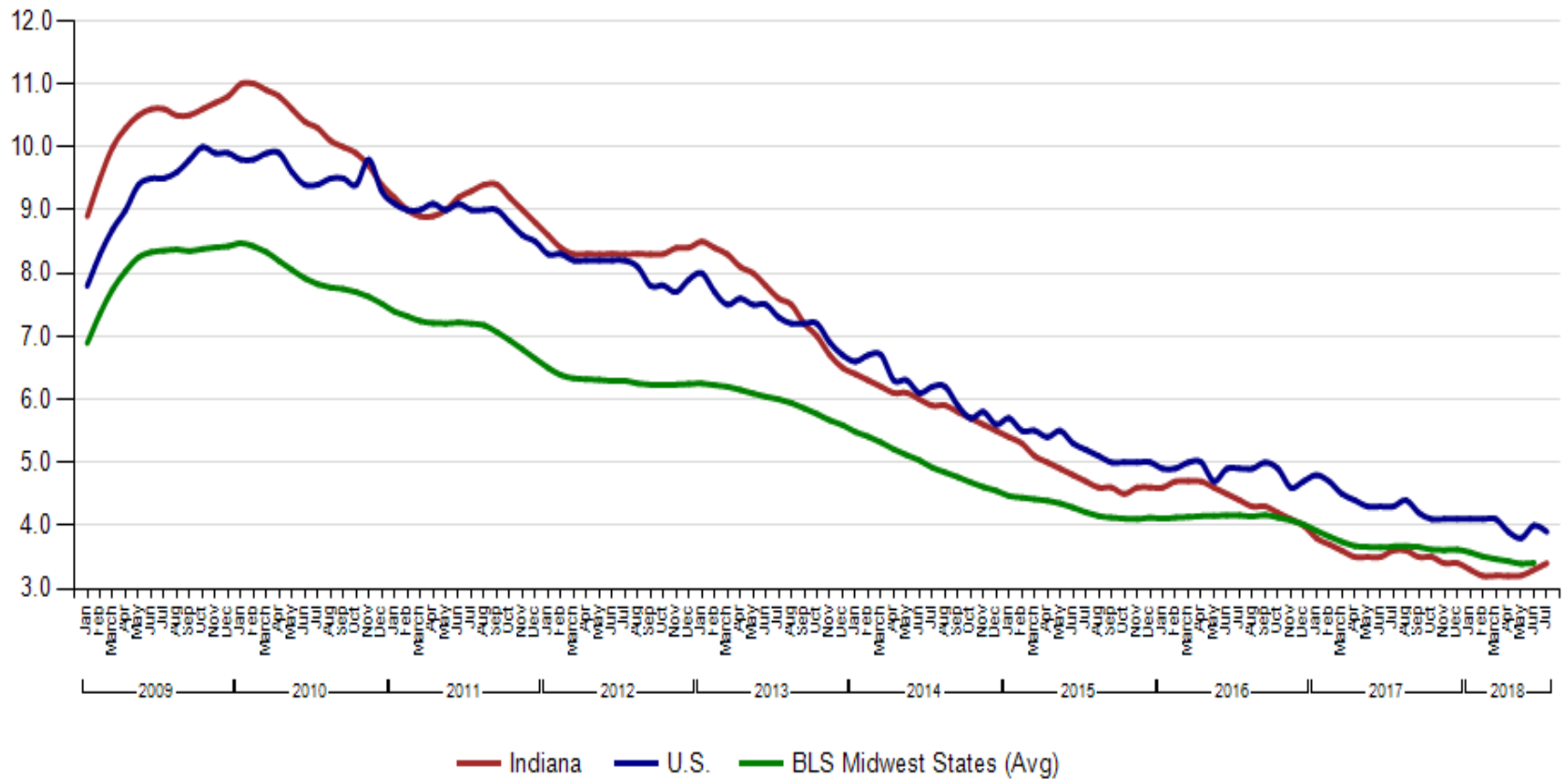




CES July Total Non Farm preliminary estimates were revised down 6,500 jobs. Private employment was revised down by 800 jobs. The change from June to July is now a increase of 9,500 jobs in Total Non-Farm and an increase of 4,800 jobs in private employment.

Revisions to July 2018 Estimates						
INDUSTRY TITLE	Jun	Jul Prev	Jul Rev	Revision	Chg from Jun	Pre Chg from Jun
Total Nonfarm	3120.9	3123.9	3130.4	6.5	9.5	3.0
Total Private	2698.2	2703.8	2703.0	-0.8	4.8	5.6
Goods Producing	685.5	687.7	686.0	-1.7	0.5	2.2
Service-Providing	2435.4	2436.2	2444.4	8.2	9.0	0.8
Private Service Providing	2012.7	2016.1	2017.0	0.9	4.3	3.4
Construction	142.0	144.0	143.5	-0.5	1.5	2.0
Manufacturing	537.3	537.4	536.2	-1.2	-1.1	0.1
Trade, Transportation, and Utilities	604.0	605.1	605.7	0.6	1.7	1.1
Wholesale Trade	119.1	119.3	119.3	0.0	0.2	0.2
Retail Trade	338.8	339.5	339.7	0.2	0.9	0.7
Transportation, Warehousing, and Utilities	146.1	146.3	146.7	0.4	0.6	0.2
Information	28.8	28.8	28.9	0.1	0.1	0.0
Financial Activities	137.6	137.2	137.5	0.3	-0.1	-0.4
Finance and Insurance	100.6	100.5	100.8	0.3	0.2	-0.1
Real Estate and Rental and Leasing	37.0	36.7	36.7	0.0	-0.3	-0.3
Professional and Business Services	340.9	343.6	343.3	-0.3	2.4	2.7
Professional, Scientific, and Technical Services	117.0	116.6	116.8	0.2	-0.2	-0.4
Management of Companies and Enterprises	34.7	34.8	34.7	-0.1	0.0	0.1
Admin & Support & Waste Mgmt & Remediation Services	189.2	192.2	191.8	-0.4	2.6	3.0
Education and Health Services	473.1	473.2	473.1	-0.1	0.0	0.1
Educational Services	62.2	62.3	61.7	-0.6	-0.5	0.1
Health Care and Social Assistance	410.9	410.9	411.4	0.5	0.5	0.0
Leisure and Hospitality	303.5	304.5	304.9	0.4	1.4	1.0
Other Services	124.8	123.7	123.6	-0.1	-1.2	-1.1
Government	422.7	420.1	427.4	7.3	4.7	-2.6

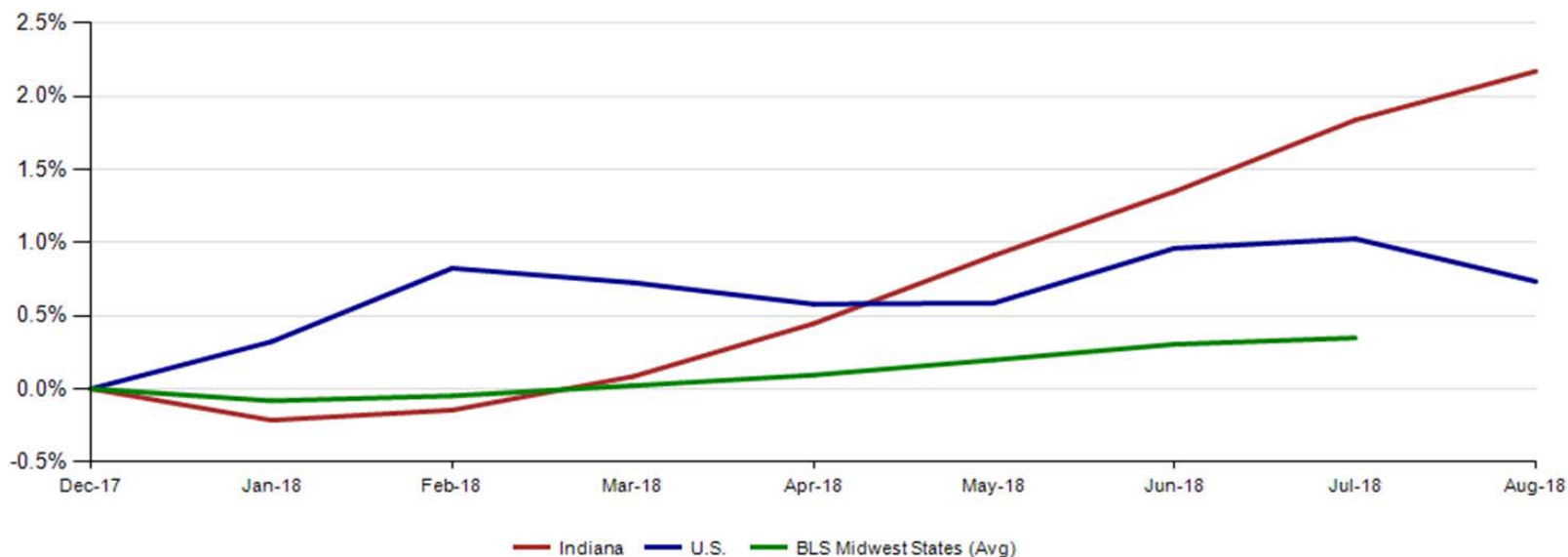
Unemployment Rate 2009 - 2018 (seasonally adjusted)





Indiana's August seasonally adjusted labor force is now at 3,392,374 up 11,085 from July. The number of employed is at 3,274,594 an increase of 8,491 over the month. These preliminary Labor Force and Employment numbers are new peaks for Indiana. An estimated 117,780 individuals are currently unemployed and seeking employment.

Labor Force Change Since December 2017 Indiana Peak (seasonally adjusted)





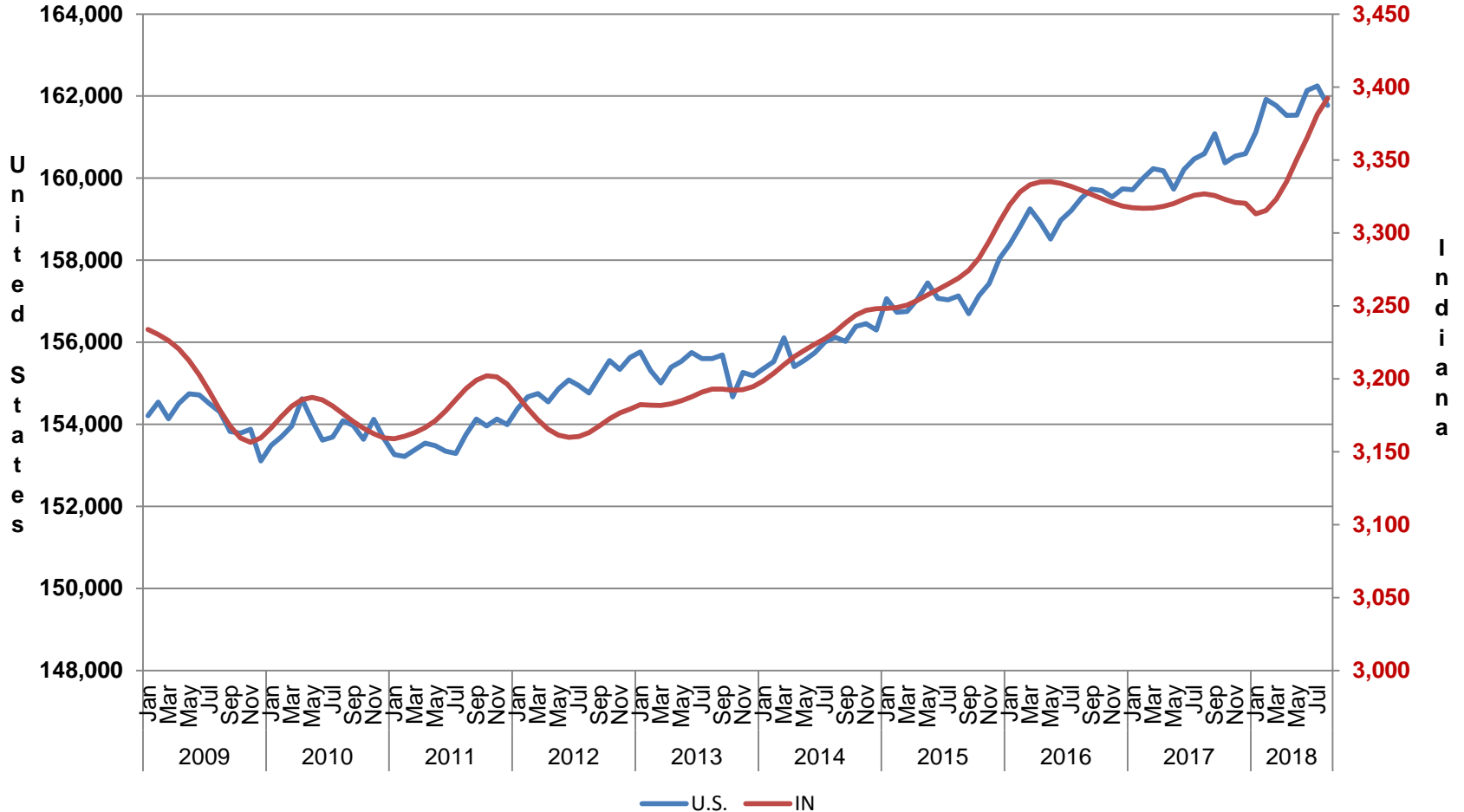
Indiana: Not in Labor Force by Gender and Age September 2017-August 2018

Current Population Survey, Bureau of Labor Statistics (in 1000s)

Table b. Civilians not in the labor force by sex and age, September 2017 - August 2018 (based on CPS)						
(Numbers in thousands)						
	Total	Age			Sex	
		16 to 24 years	25 to 54 years	55 years and over	Men	Women
Indiana						
Total not in the labor force	1,829.2	302.7	403.8	1,122.7	731.0	1,098.2
Do not want a job now	1,727.7	266.9	369.5	1,091.3	683.7	1,044.0
Want a job	101.5	35.8	34.3	31.4	47.3	54.2
Did not search for work in previous year	70.4	21.1	24.5	24.8	31.6	38.8
Searched for work in previous year	31.1	14.7	9.8	6.6	15.7	15.4
Not available to work now	5.3	2.1	2.2	1.0	1.8	3.6
Available to work now	25.8	12.6	7.6	5.5	13.9	11.8
Reason not currently looking:						
Discouragement over job prospects	9.3	3.5	2.9	2.8	7.0	2.3
Reasons other than discouragement	16.5	9.1	4.7	2.8	7.0	9.5
- Data not available						



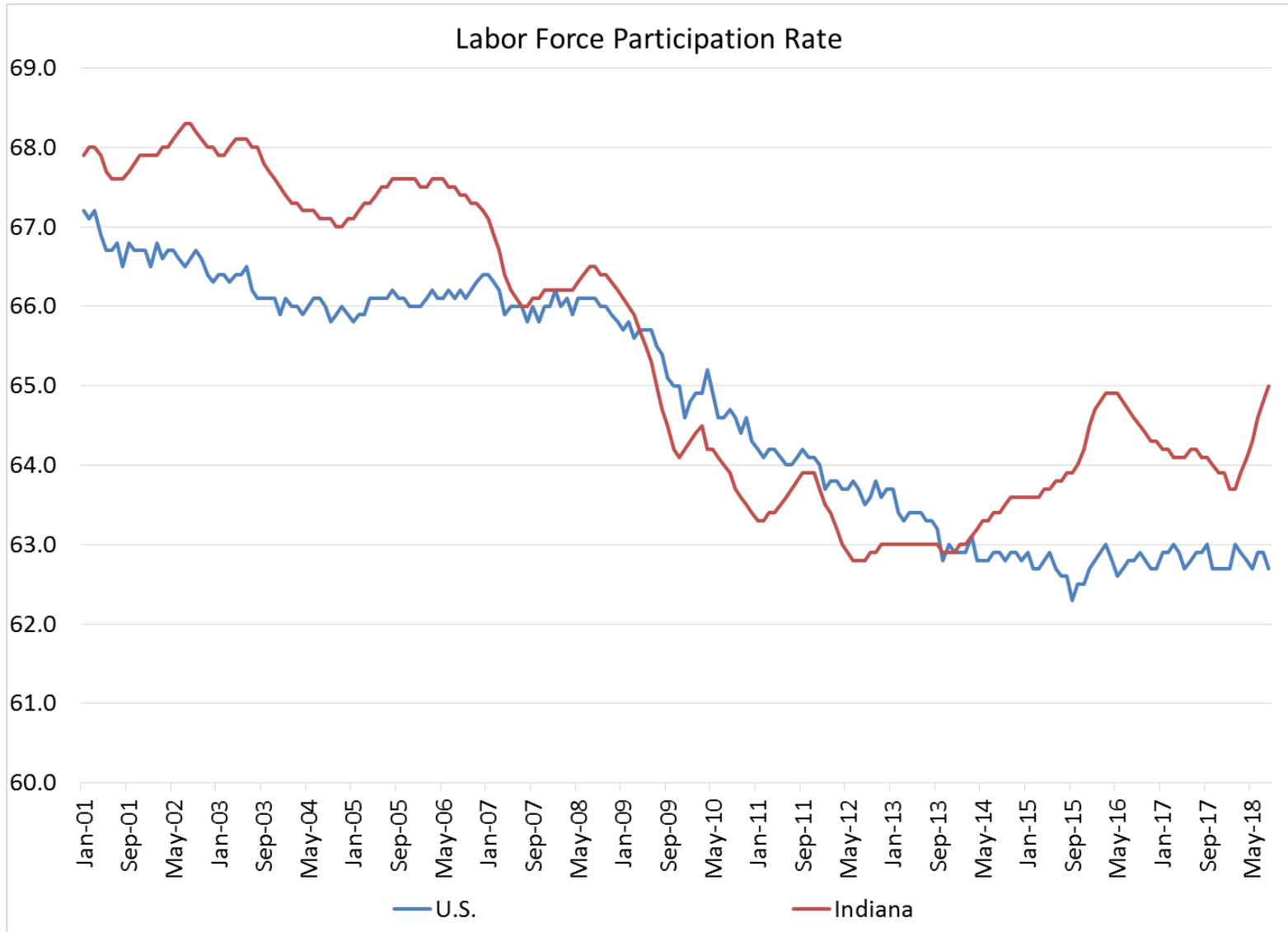
Indiana & U.S. Labor Force, 2007-2018 (in 1000s)





INDIANA
DEPARTMENT OF
WORKFORCE
DEVELOPMENT

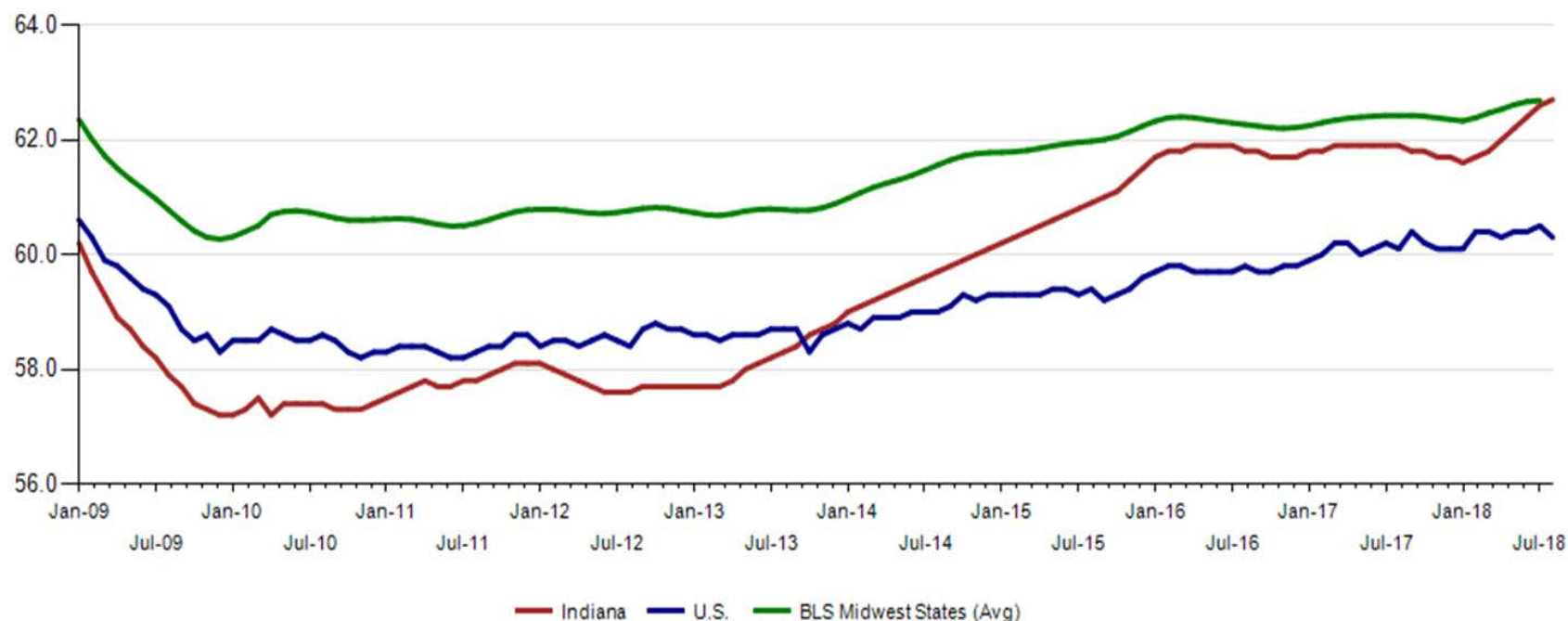
The July Indiana labor force participation rate is at 65.0% and the U.S. rate is at 62.7%.





Indiana's employment to population rate for August 2018 is 62.7%. The August U.S. employment to population rate is 60.3% and the Midwestern states employment to population is at 62.7%. (July)

Employment to Population Ratio (seasonally adjusted)





Midwest Comparison Rates: Seasonally Adjusted Over the Year and Over the Month (**confidential and preliminary**)

	August 2017	July 2018	August 2018	Monthly change	Yearly change
Indiana	3.6%	3.4%	3.5%	0.1%	-0.1%
U.S.	4.4%	3.9%	3.9%	0.0%	-0.5%
Illinois	5.0%	4.2%	4.1%	-0.1%	-0.9%
Kentucky	4.9%	4.3%	4.4%	0.1%	-0.5%
Michigan	4.6%	4.3%	4.1%	-0.2%	-0.5%
Minnesota	3.4%	3.0%	2.9%	-0.1%	-0.5%
Ohio	5.0%	4.6%	4.6%	0.0%	-0.4%
Wisconsin	3.3%	2.9%	3.0%	0.1%	-0.3%

*2017 Benchmark

Confidential & Deliberative



Alternative Measures of Labor Underutilization Third Quarter of 2017 through Second Quarter of 2018 Averages

State	U-1	U-2	U-3	U-4	U-5	U-6
ILLINOIS	1.8	2.4	4.5	4.8	5.5	8.8
INDIANA	0.9	1.7	3.6	3.8	4.2	6.7
KENTUCKY	1.3	2.2	4.5	4.8	5.3	7.7
MICHIGAN	1.5	2.0	4.6	4.8	5.4	8.9
OHIO	1.6	2.2	4.7	4.9	5.6	8.7
UNITED STATES	1.5	2.0	4.1	4.4	5.0	8.1

The six state measures are based on the same definitions as those published for the U.S.:

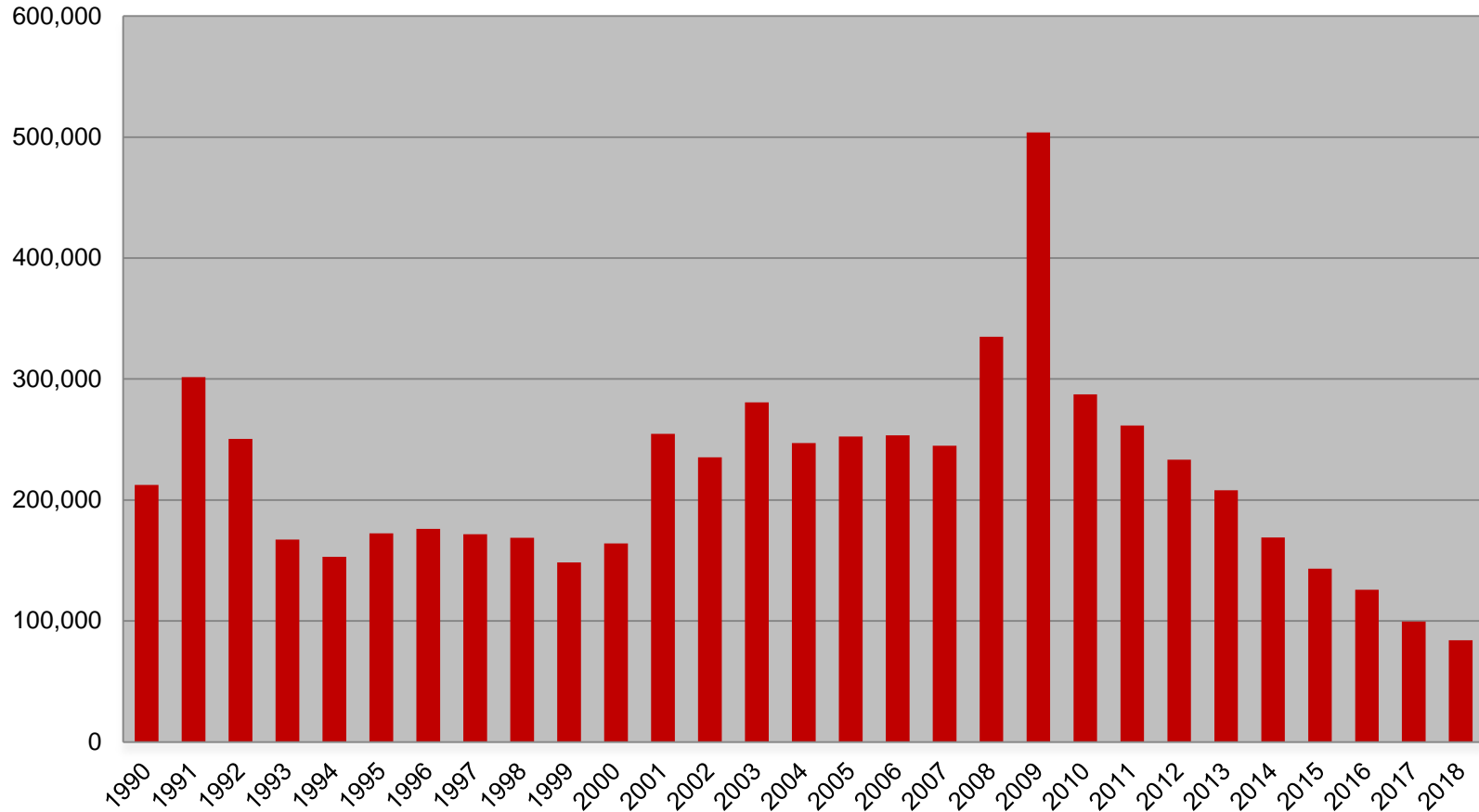
- U-1, persons unemployed 15 weeks or longer, as a percent of the civilian labor force;
- U-2, job losers and persons who completed temporary jobs, as a percent of the civilian labor force;
- U-3, total unemployed, as a percent of the civilian labor force (this is the definition used for the official unemployment rate);
- U-4, total unemployed plus discouraged workers, as a percent of the civilian labor force plus discouraged workers;
- U-5, total unemployed, plus discouraged workers, plus all other marginally attached workers, as a percent of the civilian labor force plus all marginally attached workers; and
- U-6, total unemployed, plus all marginally attached workers, plus total employed part time for economic reasons, as a percent of the civilian labor force plus all marginally attached workers.

Confidential & Deliberative



Weekly Initial Claims – Week 35

Total aggregated UI claims for the first 35 weeks of each year as reported to ETA.



Confidential & Deliberative



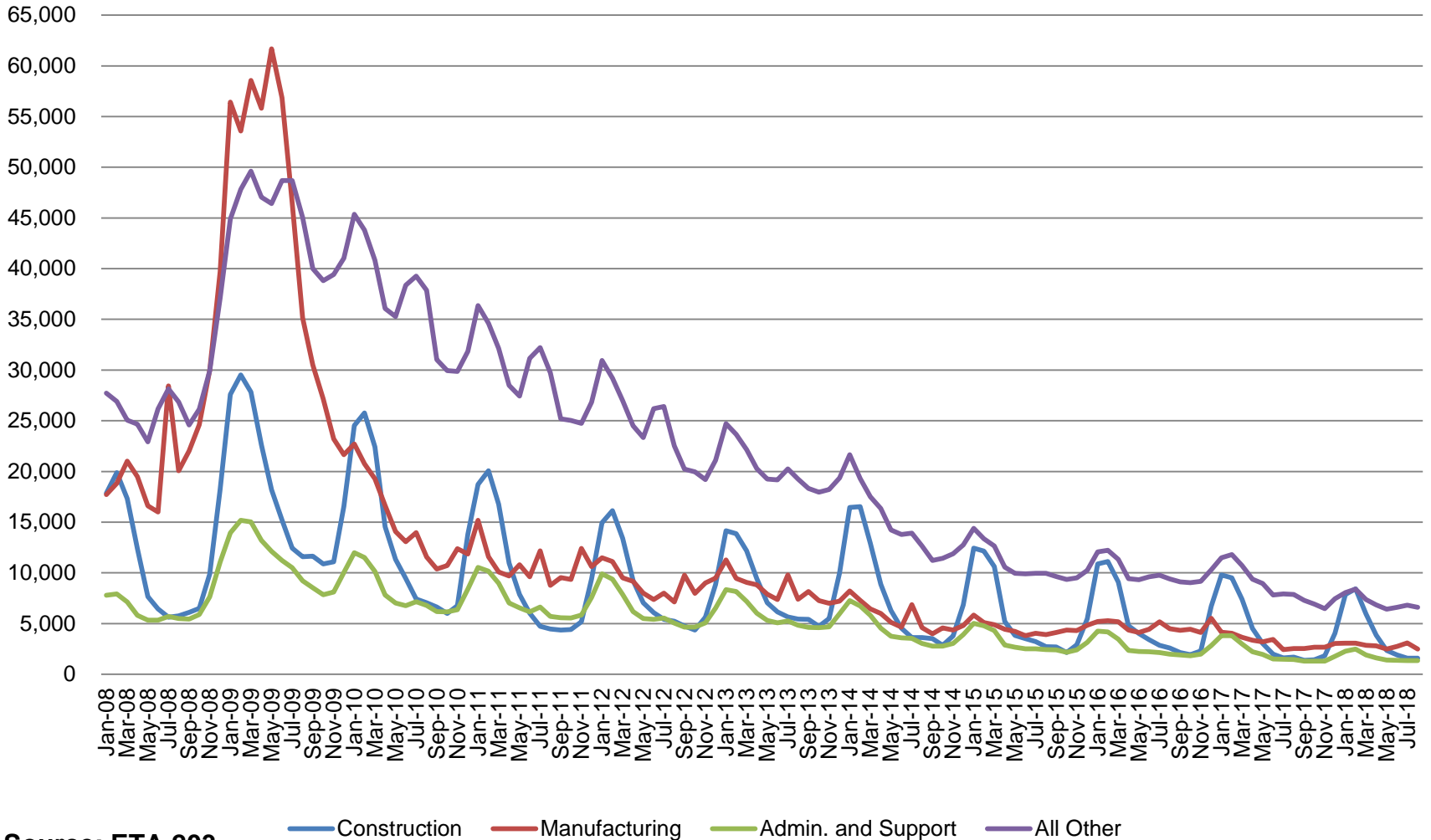
Regular UI Claims – Reference Week (12th of the month) Input to LAUS Unemployment Rate Model Declines over the month - and over the year

Without earnings – Reference week claims

	2009	2010	2011	2012	2013	2014	2015	2016	2017	2018	OTM Change	OTY Change
JANUARY	150,888	105,910	84,706	71,042	63,223	49,377	41,333	36,555	33,137	24,968	7,623	(8,169)
FEBRUARY	154,388	103,432	80,852	69,570	60,183	52,316	39,282	36,909	32,463	25,879	911	(6,584)
MARCH	157,257	93,469	71,696	60,752	54,578	45,928	35,755	32,439	32,141	21,171	(4,708)	(10,970)
APRIL	143,842	74,481	59,036	51,652	48,548	39,717	25,597	23,895	21,998	17,618	(3,553)	(4,380)
MAY	141,174	66,779	54,680	46,328	42,997	32,460	22,807	22,300	19,431	14,774	(2,844)	(4,657)
JUNE	136,670	67,996	55,021	46,820	41,722	29,524	22,030	22,025	16,722	14,653	(121)	(2,069)
JULY	121,336	69,447	58,031	47,268	44,597	30,845	22,341	22,326	15,775	15,098	445	(677)
AUGUST	103,509	62,976	51,710	42,134	39,998	26,061	21,472	20,737	15,692	13,866	(1,232)	(1,826)
SEPTEMBER	92,680	58,280	46,824	41,955	39,563	23,685	20,941	19,372	14,334			
OCTOBER	86,275	58,317	46,909	39,467	37,778	23,768	19,917	19,143	14,266			
NOVEMBER	82,451	58,846	51,201	41,018	38,517	25,315	21,199	19,547	14,347			
DECEMBER	91,814	65,279	55,104	46,371	42,484	30,982	26,249	24,599	17,345			

Regular UI Claims by Industry

For the Reference Week of Each Month



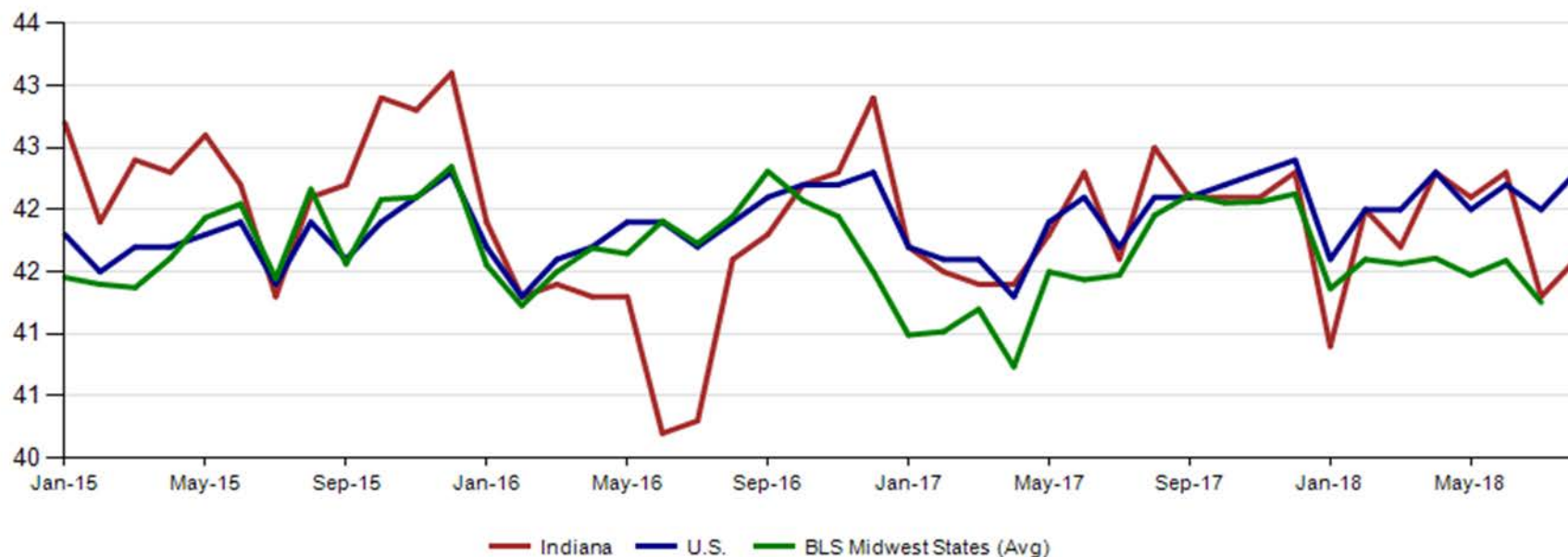
Source: ETA 203

Confidential & Deliberative



August 2018 average weekly hours for Indiana manufacturing production rose by 0.3 to 41.6. National manufacturing also increased by 0.3 to 42.3 weekly hours. Midwest states stood at 41.3 hours per week (July 2018 data).

Avg. Weekly Manufacturing Production Hours (non seasonally adjusted)



Source: Current Employment Statistics, not seasonally adjusted



Percent Change in Real Gross Domestic Product (GDP) by Metropolitan Area, 2017

