



INDIANA
DEPARTMENT OF
WORKFORCE
DEVELOPMENT

Indiana's Employment and Labor Force Estimates August 2017

09/12/2017

Key Points

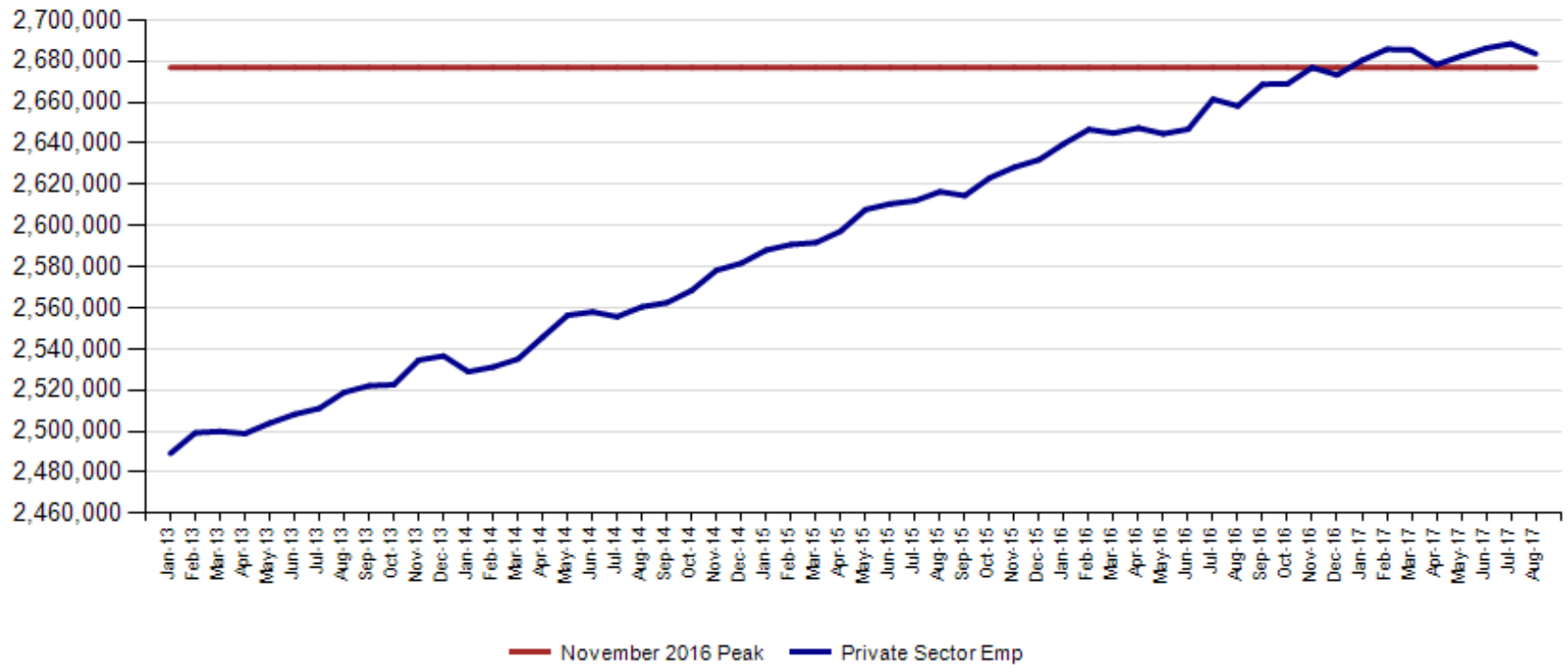
- **The Indiana Unemployment Rate is 3.5% in August 2017.**
Nationally the rate is 4.4%.
- Indiana's rate has decreased 0.9 percentage points over the year from August 2016.
- Indiana's Labor Force increased 4,615 due to a decrease in employment of 8,007 and an increase in unemployment of 12,622.
- Indiana's labor force has increased by 11,760 over the year.
- Indiana's labor force participation rate was unchanged over the month and is currently 64.4%. This remains above the U.S. Labor Force Participation rate which stands at 62.9%.
- August total private employment is 6,700 above the November 2016 peak.

Key Points

- **Indiana total private employment decreased by 4,900 over the month and had gains of 25,400 over the year.**
- Indiana August private employment stands at 2,683,600.
- Trade, Transportation & Utilities gained 2,600 jobs over the month.
- Financial Activities gained 700 jobs over the month.
- Leisure & Hospitality declined by 4,800 jobs.
- Private, Educational & Health Services declined by 2,100 jobs.
- Construction declined by 800 jobs.
- Manufacturing declined by 400 jobs.

August total private employment is 6,700 above the November 2016 peak.

Indiana Private Sector Employment





August 2017 Indiana private sector employment decreased by 4,900 jobs over the month and is up 25,400 over the year. Trade, Transportation & Utilities grew by 2,600 over the month and Financial Services increased by 700 jobs. Leisure and Hospitality lost 4,800 jobs over the month.

IN Employment Change Over the Month, Year-to-Date and Over the Year (seasonally adjusted)

Industry	August 2016	December 2016	July 2017	August 2017	Month Change	Y-to-D Change	Y-to-Y Change
Private Educational & Health Services	465.0	470.0	476.1	474.0	-2.1	4.0	9.0
.....Private Educational Services	69.0	71.3	71.4	69.5	-1.9	-1.8	0.5
.....Health Care & Social Assistance	396.0	398.7	404.7	404.5	-0.2	5.8	8.5
Manufacturing	522.0	526.9	529.8	529.4	-0.4	2.5	7.4
Professional & Business Services	337.1	337.3	341.7	341.7	0.0	4.4	4.6
Financial Activities	134.3	134.8	137.1	137.8	0.7	3.0	3.5
Construction	131.5	128.8	137.0	136.2	-0.8	7.4	4.7
Leisure and Hospitality	307.9	310.2	310.4	305.6	-4.8	-4.6	-2.3
Trade, Transportation & Utilities	595.3	598.4	589.9	592.5	2.6	-5.9	-2.8
.....Trade	450.7	455.2	450.8	453.6	2.8	-1.6	2.9
.....Transportation, Warehousing & Utilities	144.6	143.2	139.1	138.9	-0.2	-4.3	-5.7
All Other	165.1	166.9	166.5	166.4	-0.1	-0.5	1.3
Total Private	2,658.2	2,673.3	2,688.5	2,683.6	-4.9	10.3	25.4
Government (Includes Public Schools & Hospitals)	436.0	430.6	438.1	442.2	4.1	11.6	6.2
Total Nonfarm	3,094.2	3,103.9	3,126.6	3,125.8	-0.8	21.9	31.6
United States Total Private	122,343.0	123,026.0	124,267.0	124,432.0	165.0	1,406.0	2,089.0

August 2017 estimates show Indiana has gained 360,400 in Private jobs since the July 2009 trough. Manufacturing has accounted for 102,500 of those jobs.

IN Statewide Estimates (seasonally adjusted) -- August 2017

Supersector	Private Empl. Peak Nov 2016	Private Empl. Trough July 2009	July 2017	August 2017	Change Since Peak	Change Since Trough	Month to Month Change
Private Educational & Health Services	472.1	411.1	476.1	474.0	1.9	62.9	-2.1
.....Private Educational Services	74.2	63.3	71.4	69.5	-4.7	6.2	-1.9
.....Health Care & Social Assistance	397.9	347.8	404.7	404.5	6.6	56.7	-0.2
Manufacturing	524.6	426.9	529.8	529.4	4.8	102.5	-0.4
Professional & Business Services	340.7	256.9	341.7	341.7	1.0	84.8	0.0
Financial Activities	134.9	130.7	137.1	137.8	2.9	7.1	0.7
Construction	129.1	116.5	137.0	136.2	7.1	19.7	-0.8
Leisure and Hospitality	309.5	276.8	310.4	305.6	-3.9	28.8	-4.8
Trade, Transportation & Utilities	598.8	545.7	589.9	592.5	-6.3	46.8	2.6
.....Trade	454.5	421.6	450.8	453.6	-0.9	32.0	2.8
.....Transportation, Warehousing & Utilities	144.3	124.1	139.1	138.9	-5.4	14.8	-0.2
All Other	167.2	158.6	166.5	166.4	-0.8	7.8	-0.1
Total Private	2,676.9	2,323.2	2,688.5	2,683.6	6.7	360.4	-4.9
Government (Includes Public Schools & Hospitals)	431.4	434.5	438.1	442.2	10.8	7.7	4.1
Total Nonfarm	3,108.3	2,757.7	3,126.6	3,125.8	17.5	368.1	-0.8
United States Total Private	122,876.0	108,171.0	124,267.0	124,432.0	1,556.0	16,261.0	165.0



Indiana job growth over the month trailed the national trend in private sector gains in August. Indiana Financial Activities are growing faster than the U.S. over the month and over the year.

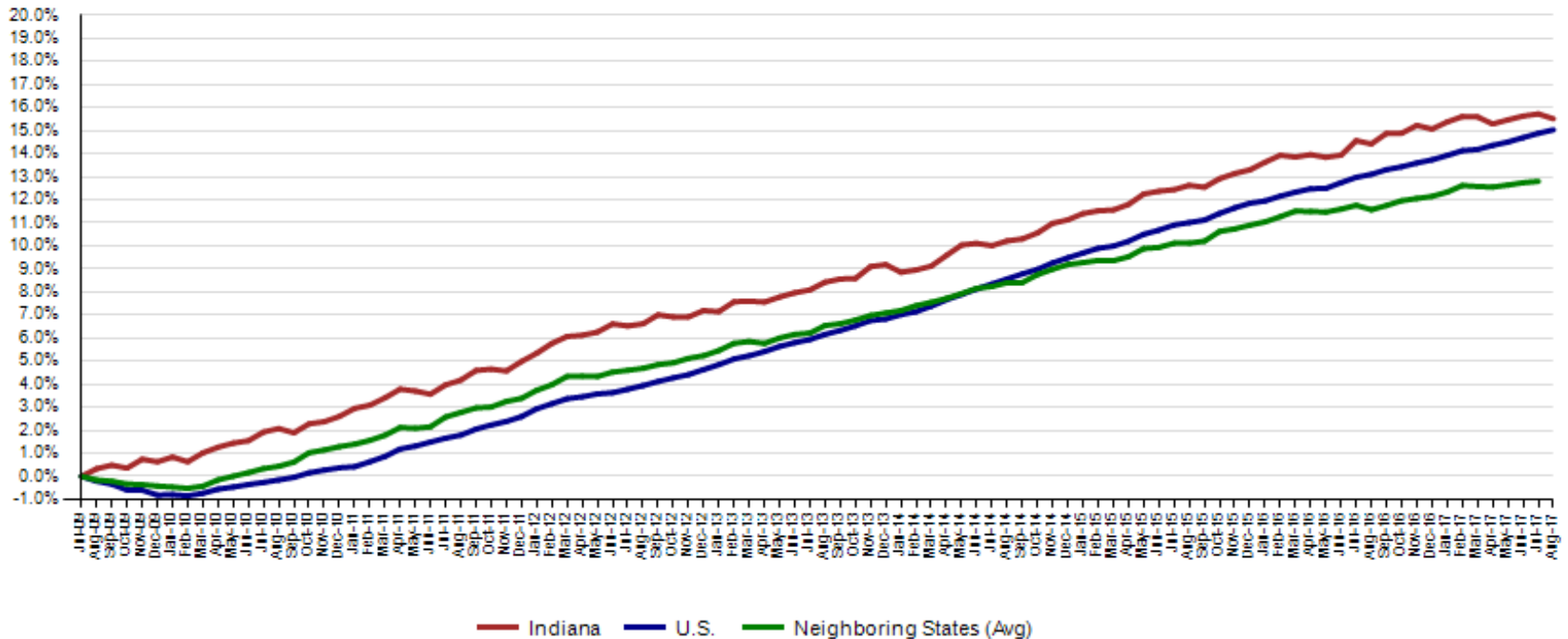
IN Employment Change Compared to the U.S.

Industry	Month to Month			Year-to-Date		
	Indiana	U.S.	Indiana vs U.S.	Indiana	U.S.	Indiana vs U.S.
Private Educational & Health Services	-0.4%	0.1%	UNDER	0.9%	1.3%	UNDER
.....Private Educational Services	-2.7%	0.2%	UNDER	-2.5%	1.0%	UNDER
.....Health Care & Social Assistance	0.0%	0.1%	UNDER	1.5%	1.4%	OVER
Manufacturing	-0.1%	0.3%	UNDER	0.5%	1.1%	UNDER
Professional & Business Services	0.0%	0.2%	UNDER	1.3%	1.9%	UNDER
Financial Activities	0.5%	0.1%	OVER	2.2%	1.2%	OVER
Construction	-0.6%	0.4%	UNDER	5.7%	2.0%	OVER
Leisure and Hospitality	-1.5%	0.0%	UNDER	-1.5%	1.6%	UNDER
Trade, Transportation & Utilities	0.4%	0.0%	OVER	-1.0%	0.1%	UNDER
.....Trade	0.6%	0.0%	OVER	-0.4%	0.0%	UNDER
.....Transportation, Warehousing & Utils	-0.1%	0.0%	UNDER	-3.0%	0.4%	UNDER
All Other	-0.1%	0.2%	UNDER	-0.3%	0.9%	UNDER
Total Private	-0.2%	0.1%	UNDER	0.4%	1.1%	UNDER
Government (Includes Public Schools & Hospitals)	0.9%	0.0%	OVER	2.7%	0.0%	OVER
Total Nonfarm	0.0%	0.1%	UNDER	0.7%	1.0%	UNDER

Source: Current Employment Statistics, seasonally adjusted

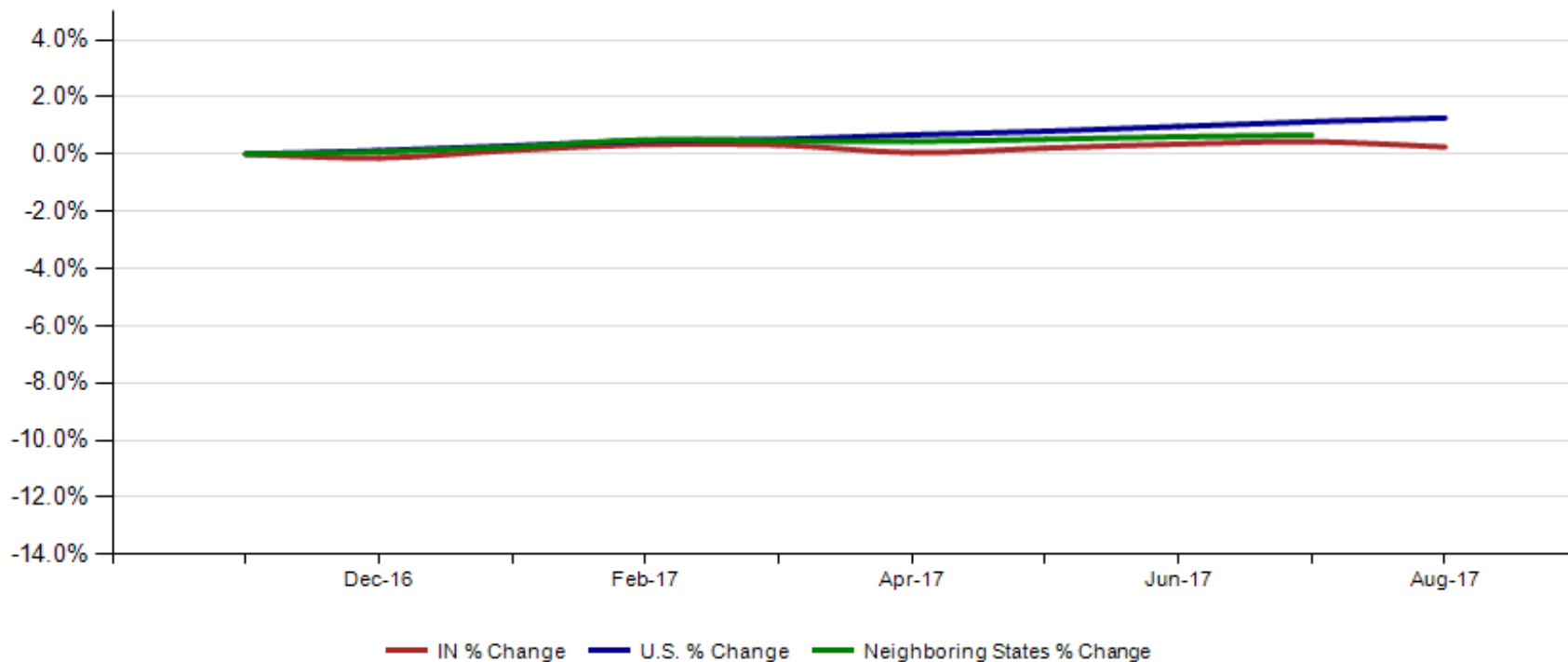
Since the low point of employment in July 2009, private sector employment growth in Indiana has surpassed the U.S. (15.5% vs. 15.0%).

Private Sector Job Growth Since the Low Point of Employment in Indiana



Since Indiana's high point of employment (November 2016), private sector employment growth in Indiana has lagged the U.S. (0.3% growth vs. 1.3% nationally).

Private Sector Job Growth Since the Peak of Employment in Indiana



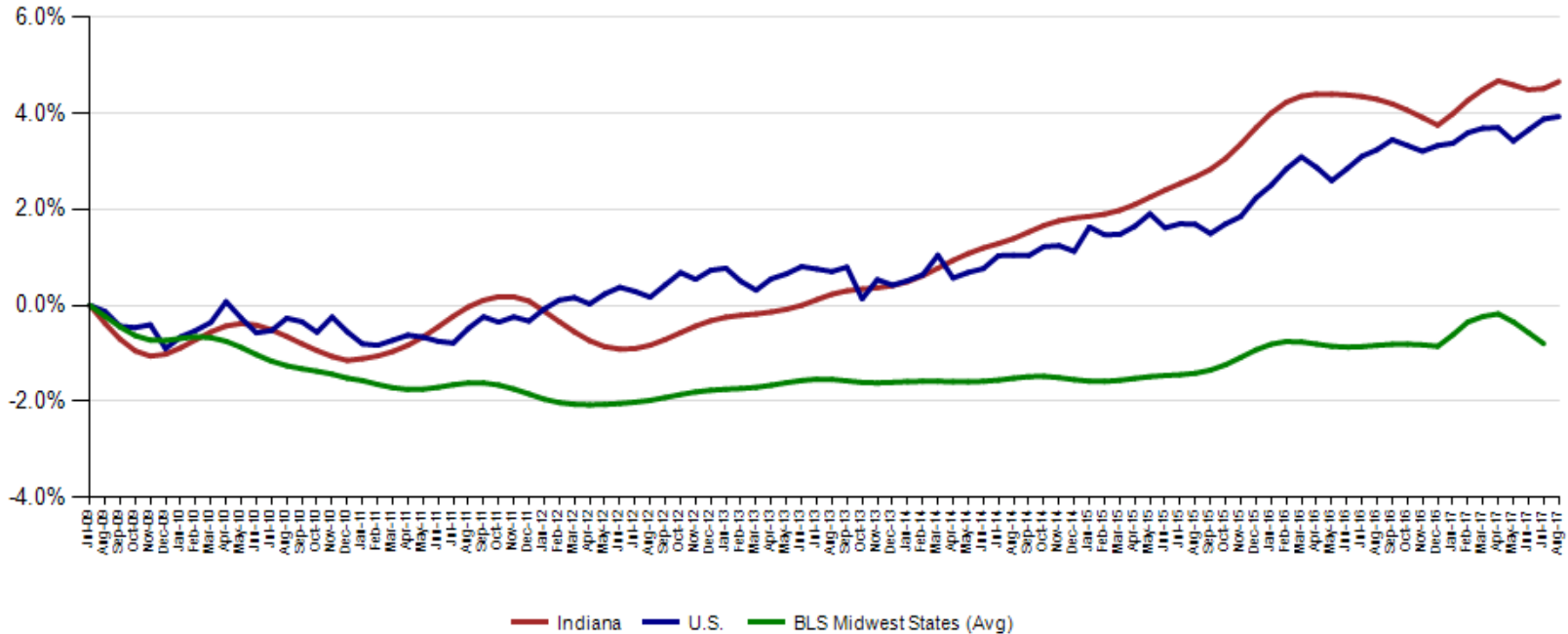


CES July Total Non Farm preliminary estimates were revised up by 11,300 jobs. Private employment was revised up by 200. The change from June to July is now an increase of 8,500 in Total Non-Farm and an increase of 2,200 in private employment.

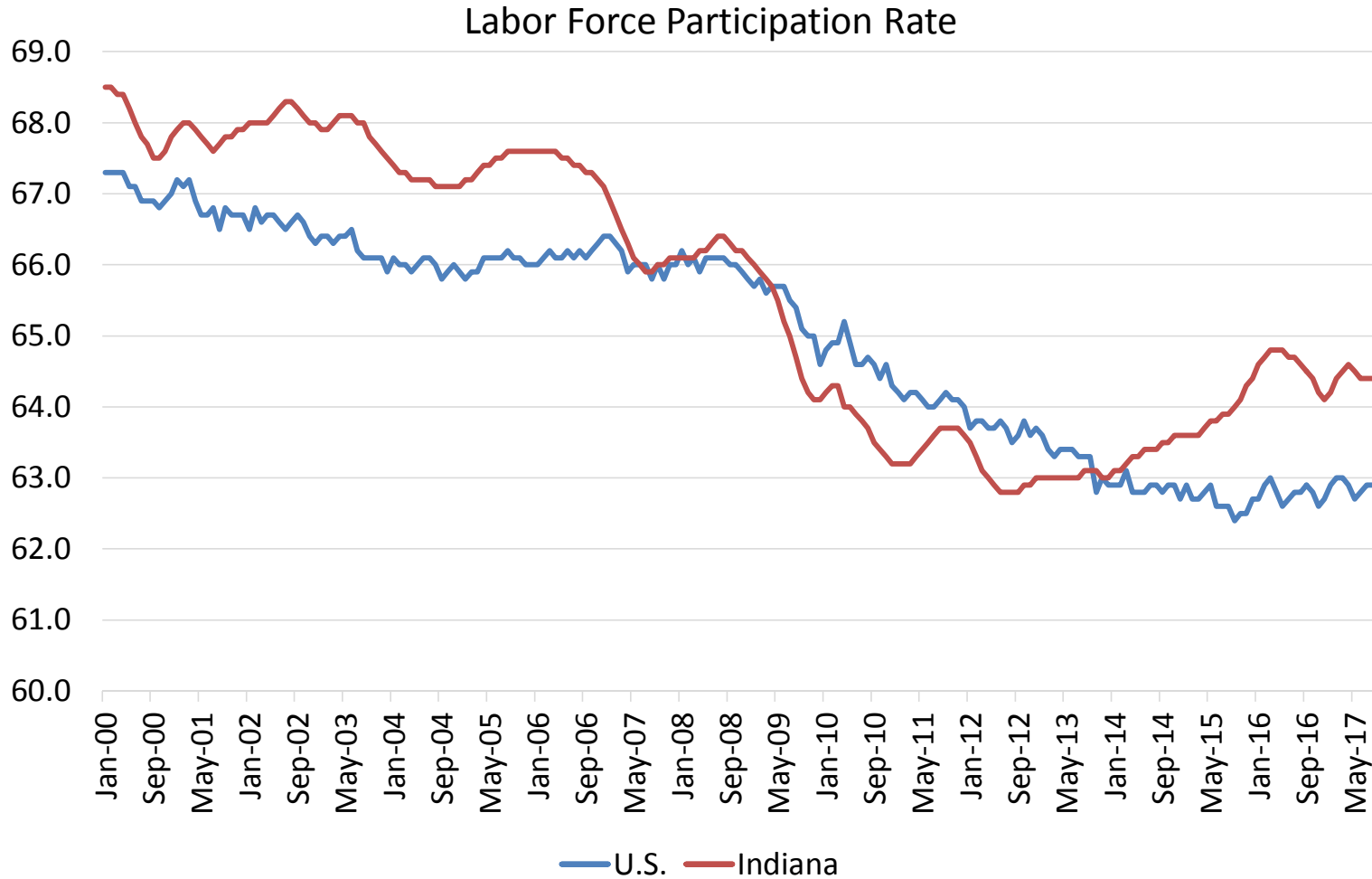
Revisions to July 2017 Estimates						
INDUSTRY TITLE	June	Jul Prel	Jul Rev	Revision	Chg from June	Prel Chg from June
Total Nonfarm	3118.1	3115.3	3126.6	11.3	8.5	-2.8
Total Private	2686.3	2688.3	2688.5	0.2	2.2	2.0
Goods Producing	671.1	671.2	673.0	1.8	1.9	0.1
Service-Providing	2447	2444.1	2453.6	9.5	6.6	-2.9
Private Service Providing	2015.2	2017.1	2015.5	-1.6	0.3	1.9
Construction	137.7	137.0	137.0	0.0	-0.7	-0.7
Manufacturing	527.0	528.0	529.8	1.8	2.8	1.0
Trade, Transportation, and Utilities	590.7	590.1	589.9	-0.2	-0.8	-0.6
Wholesale Trade	119.1	117.9	118.2	0.3	-0.9	-1.2
Retail Trade	332.4	333.0	332.6	-0.4	0.2	0.6
Transportation, Warehousing, and Utilities	139.2	139.2	139.1	-0.1	-0.1	0.0
Information	30.4	30.1	30.2	0.1	-0.2	-0.3
Financial Activities	139.2	137.0	137.1	0.1	-2.1	-2.2
Finance and Insurance	102.9	101.7	101.8	0.1	-1.1	-1.2
Real Estate and Rental and Leasing	36.3	35.3	35.3	0.0	-1.0	-1.0
Professional and Business Services	342.7	341.9	341.7	-0.2	-1.0	-0.8
Professional, Scientific, and Technical Services	118.0	119.4	118.9	-0.5	0.9	1.4
Management of Companies and Enterprises	34.0	35.2	35.3	0.1	1.3	1.2
Admin & Support & Waste Mgmt & Remediation Services	190.7	187.3	187.5	0.2	-3.2	-3.4
Education and Health Services	474.6	478.2	476.1	-2.1	1.5	3.6
Educational Services	71.0	72.3	71.4	-0.9	0.4	1.3
Health Care and Social Assistance	403.6	405.9	404.7	-1.2	1.1	2.3
Leisure and Hospitality	307.3	309.6	310.4	0.8	3.1	2.3
Other Services	130.3	130.2	130.1	-0.1	-0.2	-0.1
Government	431.8	427.0	438.1	11.1	6.3	-4.8

Indiana's August seasonally adjusted labor force is now at 3,337,144 and the number of employed is at 3,220,434. An estimated 116,710 individuals are currently unemployed and seeking employment.

Labor Force Change Since July 2009 Indiana Trough (seasonally adjusted)

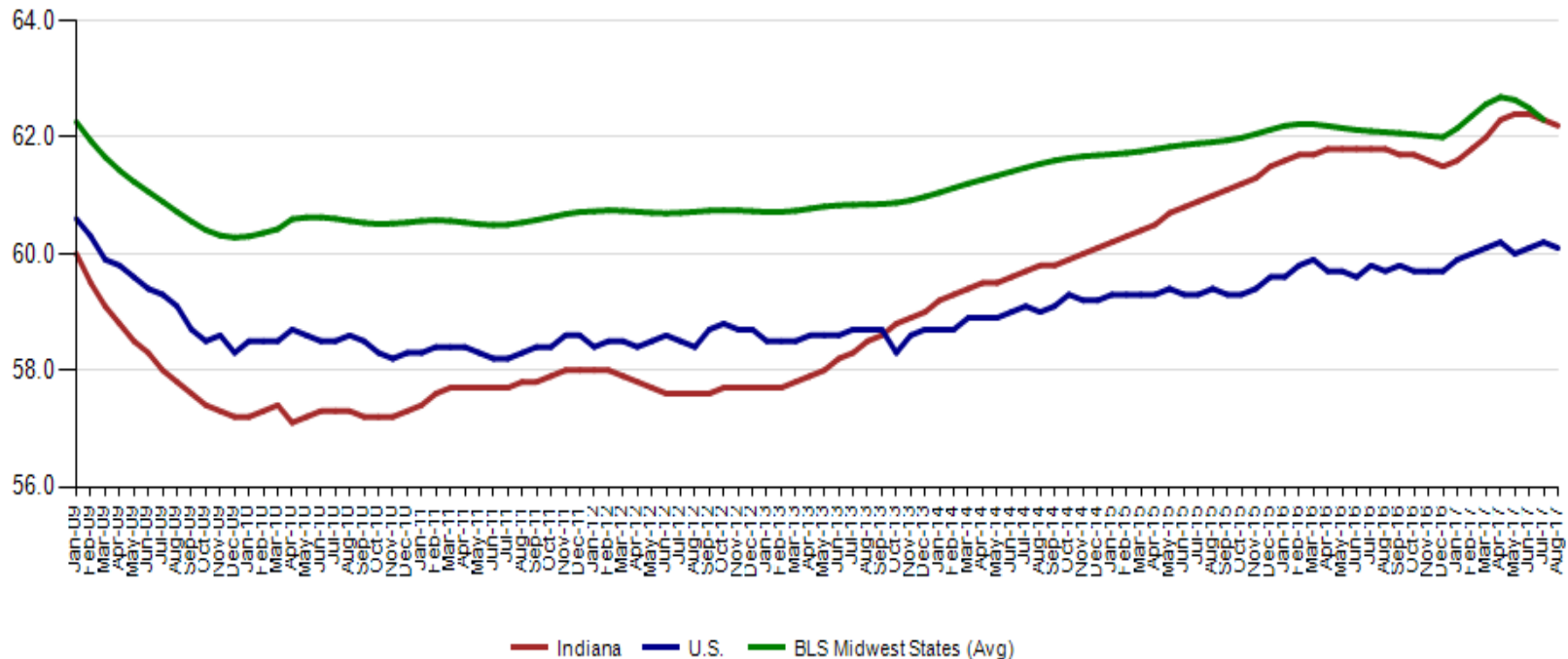


**The August Indiana labor force participation rate remains at 64.4%
and the U.S. Rate is 62.9%**



Indiana's employment to population August 2017 rate is 62.2%. The August U.S. employment to population rate is 60.1% The BLS Midwest Regional States held at 62.3% (July 2017).

Employment to Population Ratio (seasonally adjusted)

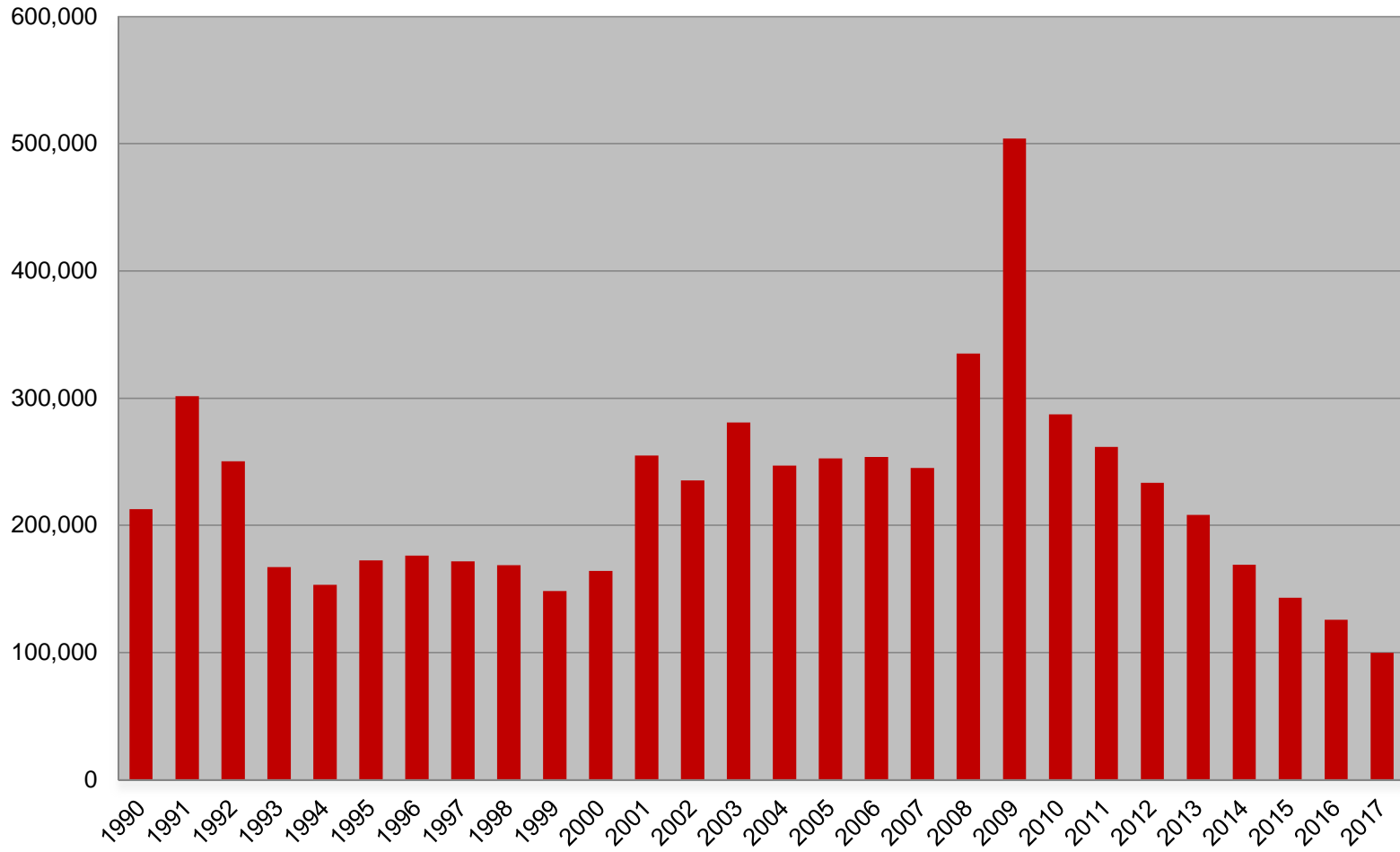


Midwest Comparison Rates: Seasonally Adjusted Over the Year and Over the Month (confidential and preliminary)

	August 2016	July 2017	August 2017	Monthly change	Yearly change
Indiana	4.4%	3.1%	3.5%	0.4%	-0.9%
U.S.	4.9%	4.3%	4.4%	0.1%	-0.5%
Illinois	5.8%	4.8%		-4.8%	-5.8%
Kentucky	5.0%	5.3%		-5.3%	-5.0%
Michigan	4.9%	3.7%	3.9%	0.2%	-1.0%
Minnesota	3.9%	3.7%		-3.7%	-3.9%
Ohio	4.9%	5.2%	5.4%	0.2%	0.5%
Wisconsin	4.2%	3.2%	3.4%	0.2%	-0.8%



Weekly Initial Claims – Week 35



Regular UI Claims – Reference Week (12th of the month) Input to LAUS Unemployment Rate Model Declines over the month - and over the year

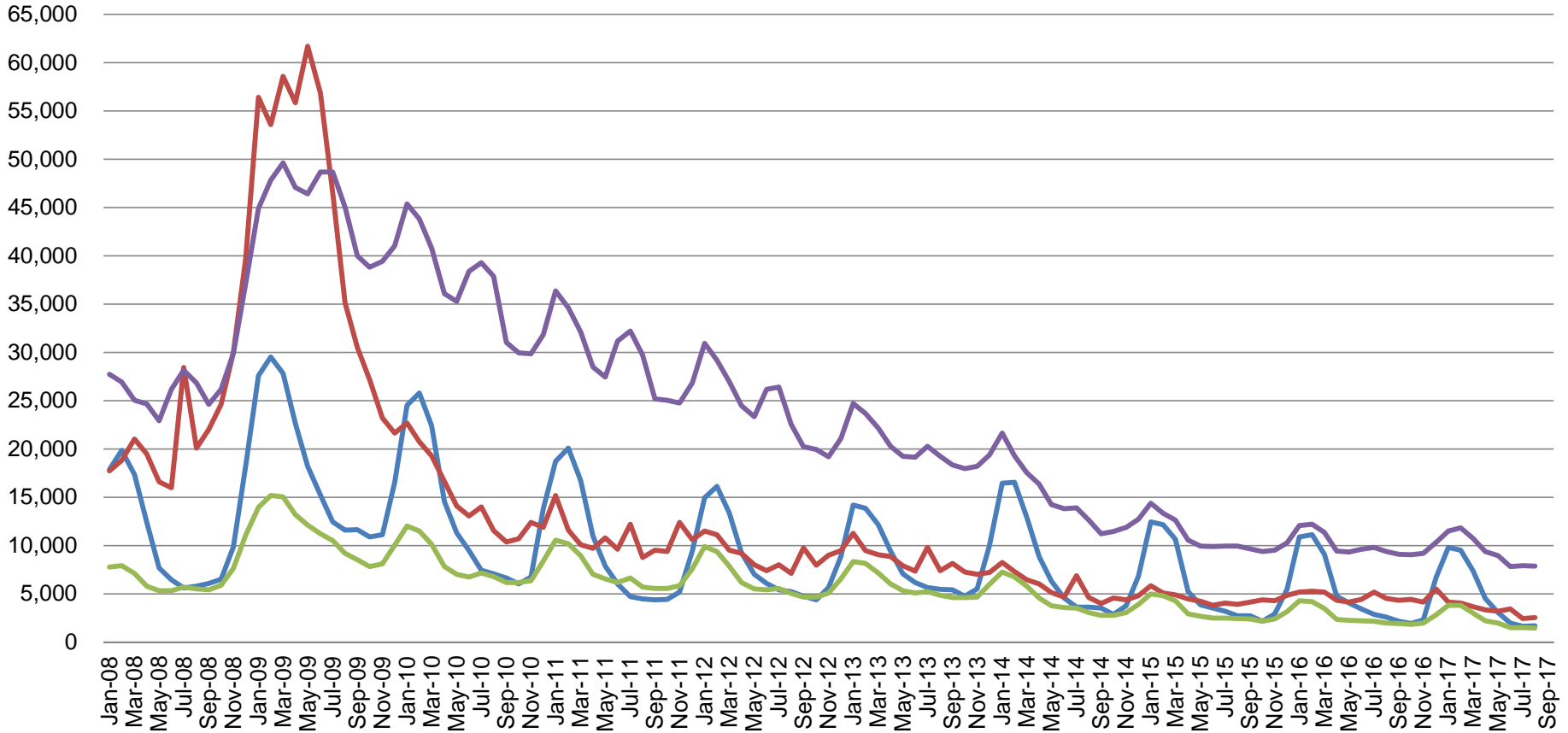
Without earnings – Reference week claims

	2006	2007	2008	2009	2010	2011	2012	2013	2014	2015	2016	2017	OTM Change	OTY Change
JANUARY	65,898	71,296	75,294	150,888	105,910	84,706	71,042	63,223	49,377	41,333	36,555	33,137	8,538	(3,418)
FEBRUARY	67,347	75,432	78,068	154,388	103,432	80,852	69,570	60,183	52,316	39,282	36,909	32,463	(674)	(4,446)
MARCH	59,716	64,936	74,759	157,257	93,469	71,696	60,752	54,578	45,928	35,755	32,439	32,141	(322)	(298)
APRIL	48,103	53,325	64,948	143,842	74,481	59,036	51,652	48,548	39,717	25,597	23,895	21,998	(10,143)	(1,897)
MAY	46,779	46,002	55,480	141,174	66,779	54,680	46,328	42,997	32,460	22,807	22,300	19,431	(2,567)	(2,869)
JUNE	45,533	46,350	57,228	136,670	67,996	55,021	46,820	41,722	29,524	22,030	22,025	16,722	(2,709)	(5,303)
JULY	53,424	51,141	72,032	121,336	69,447	58,031	47,268	44,597	30,845	22,341	22,326	15,775	(947)	(6,551)
AUGUST	45,021	43,887	61,985	103,509	62,976	51,710	42,134	39,998	26,061	21,472	20,737	15,530	(245)	(5,207)
SEPTEMBER	41,247	42,500	61,548	92,680	58,280	46,824	41,955	39,563	23,685	20,941	19,372			
OCTOBER	42,487	42,313	67,306	86,275	58,317	46,909	39,467	37,778	23,768	19,917	19,143			
NOVEMBER	43,868	45,362	81,466	82,451	58,846	51,201	41,018	38,517	25,315	21,199	19,547			
DECEMBER	53,566	54,201	109,651	91,814	65,279	55,104	46,371	42,484	30,982	26,249	24,599			



Regular UI Claims by Industry

For the Reference Week of Each Month

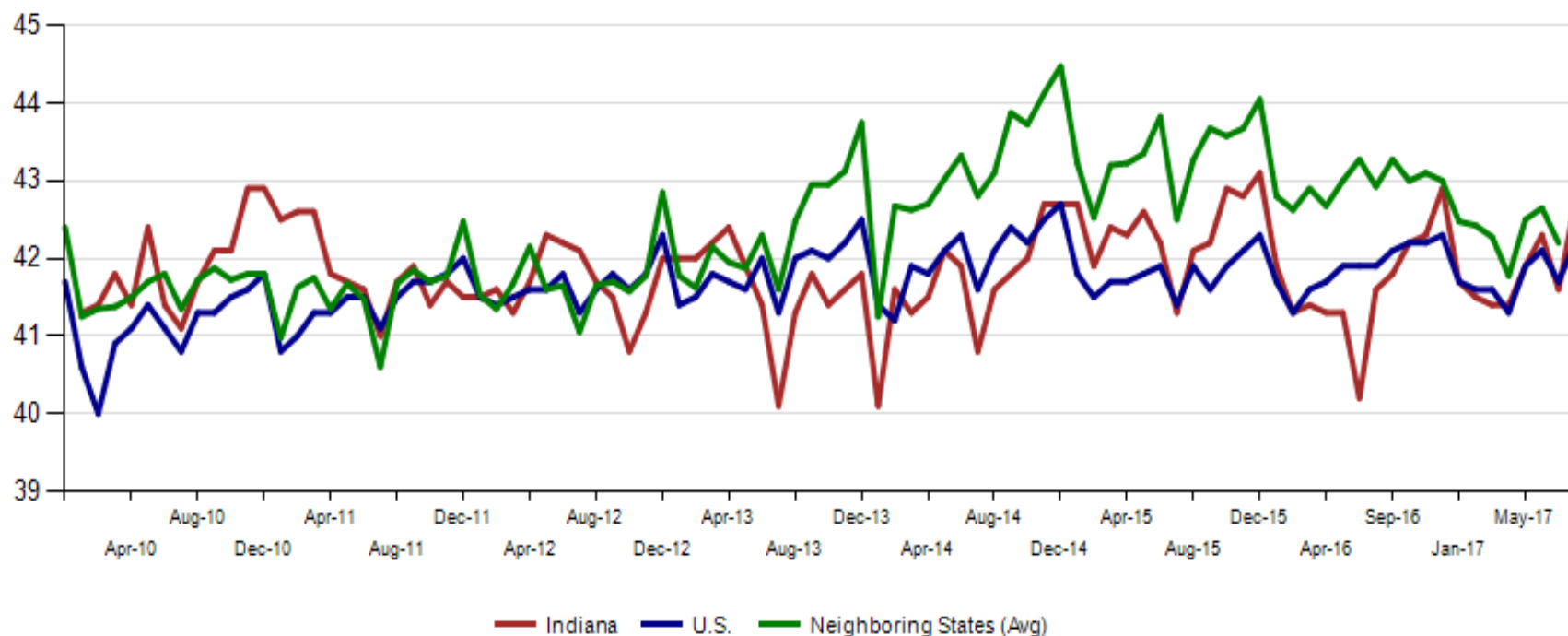


Source: ETA 203

Construction Manufacturing Admin. and Support All Other

August 2017 average weekly hours for Indiana manufacturing production increased by 1.1 hours to 42.7. Indiana is now ahead of the national manufacturing weekly hours of 42.2. Neighboring states were at 42.2 hours (July data).

Avg. Weekly Manufacturing Production Hours (non seasonally adjusted)



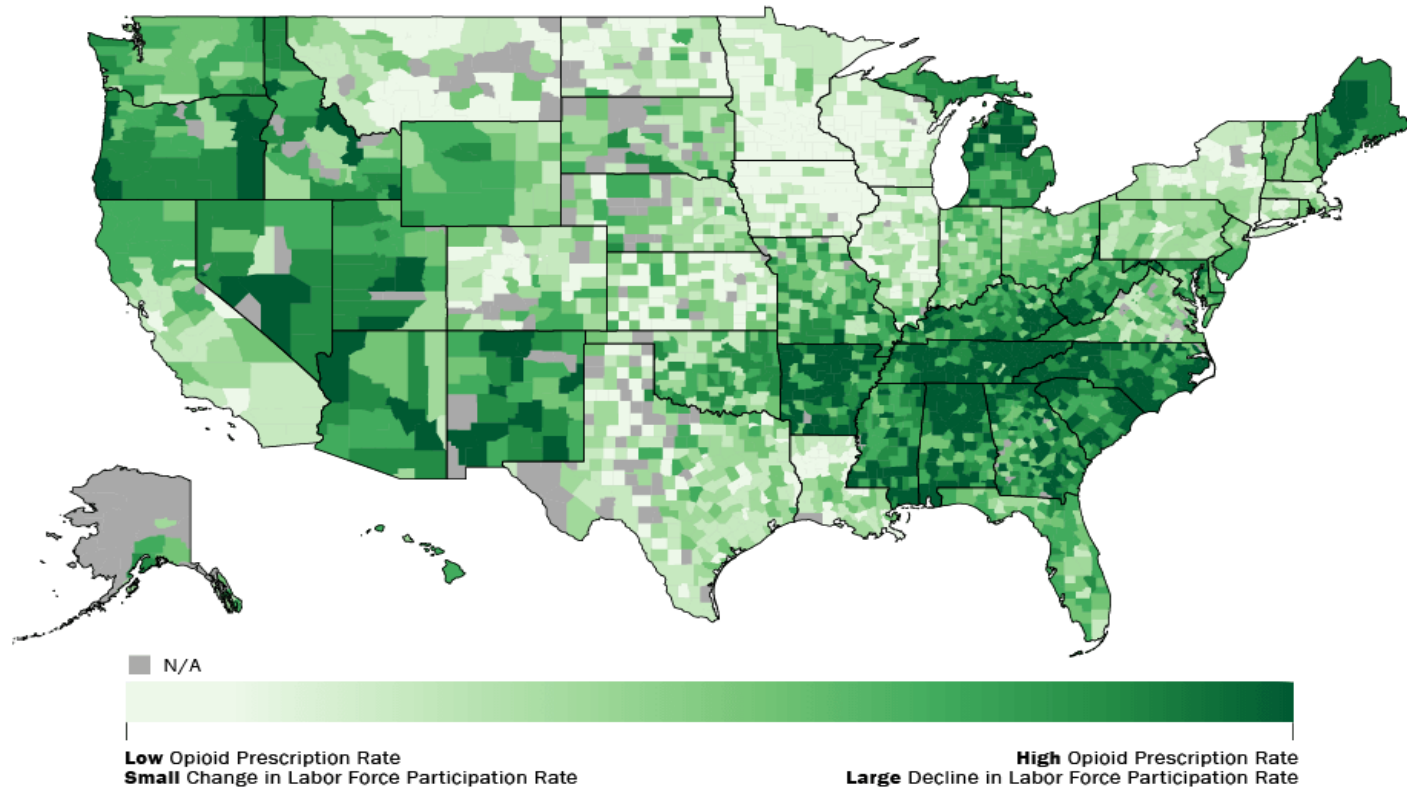


IN Metropolitan Area Employment Estimates

MSA	August 2000	August 2016	July 2017	August 2017	August 2017 Change	Change since 2000	% Chg since 2000	Annual Change	Annual % Change
Elkhart-Goshen	127,600	132,500	137,600	139,900	2,300	12,300	9.6%	7,400	5.6%
Columbus	45,000	52,500	53,800	54,700	900	9,700	21.6%	2,200	4.2%
Kokomo	50,400	41,900	42,700	43,400	700	-7,000	-13.9%	1,500	3.6%
Lafayette-West Lafayette	88,600	100,600	100,400	103,000	2,600	14,400	16.3%	2,400	2.4%
Indianapolis-Carmel-Anderson	899,200	1,053,500	1,061,300	1,072,700	11,400	173,500	19.3%	19,200	1.8%
Fort Wayne	215,900	219,600	221,600	223,500	1,900	7,600	3.5%	3,900	1.8%
Evansville	160,800	158,400	160,400	161,100	700	300	0.2%	2,700	1.7%
Terre Haute	76,100	70,700	70,900	71,900	1,000	-4,200	-5.5%	1,200	1.7%
Bloomington	68,600	73,000	70,800	73,700	2,900	5,100	7.4%	700	1.0%
Muncie	56,000	50,500	49,800	50,700	900	-5,300	-9.5%	200	0.4%
Gary Division	280,000	275,200	275,000	275,500	500	-4,500	-1.6%	300	0.1%
South Bend	150,100	137,100	136,700	136,900	200	-13,200	-8.8%	-200	-0.1%
Michigan City	49,500	41,700	40,500	40,600	100	-8,900	-18.0%	-1,100	-2.6%

Combined Effect of Opioid Prescription Rates and Change in Labor Force Participation Rate, Prime Age Adults, Ages 25–54

Combined Effect of Opioid Prescription Rates and Change in Labor Force Participation Rate
Prime Age Adults, Ages 25–54



Note: Data on change in state-level labor force participation is from CPS years 1999-2001 and 2014-2016 for prime age adults and county-level data on opioid levels is from CDC Vital Signs (QuintilesIMS). For each county, the combined effect is the average of the percentile rank of labor force participation change and the percentile rank of opioid prescription rate.

Based on data used in "Where Have All the Workers Gone? An Inquiry into the Decline of the U.S. Labor Force Participation Rate" by Alan Krueger. Brookings Papers on Economic Activity, Fall 2017

Indiana Counties: Combined Effect of Opioid Prescription Rates and Change in Labor Force Participation Rate, Prime Age Adults, Ages 25–54

Rank	Combined Effect	County
1	65.5	Scott County
2	63.5	Starke County
3	62.5	Fayette County
3	62.5	Floyd County
3	62.5	Sullivan County
4	62	Clark County
5	61.5	Vanderburgh County
6	60	Lawrence County
7	59	Jefferson County
8	58.5	Knox County
9	58	Henry County
9	58	Morgan County
10	57.5	Jasper County
10	57.5	Wayne County

