



INDIANA
WORKFORCE
DEVELOPMENT
AND ITS **WorkOne** CENTERS

Indiana's Employment and Labor Force Estimates August 2016

09/15/2016



Key Points

The Indiana Unemployment Rate is 4.5% in August 2016.

Nationally the rate is 4.9%.

- Indiana's rate has decreased over the year from August 2015 by .1% and currently is 4.5%.
- Indiana's Labor Force increased 3,516 over the month, with an increase in employment of 6,205. Unemployment decreased by 2,689.
- Indiana's Labor Force increased 78,756 with 77,113 in employment and 1,643 in unemployment since the start of the year.
- Indiana's Labor Force increased 110,227 over the year, and has increased 196,078 since January 2013.
- Total private employment stands at 37,100 above the March 2000 Peak.
- Private employment is up 156,800 since January 2013.
- Indiana's Labor Force Participation rate increased by .1% over the month and is currently 65.5%. This remains above the US Labor Force Participation rate which stands at 62.8.



Key Points

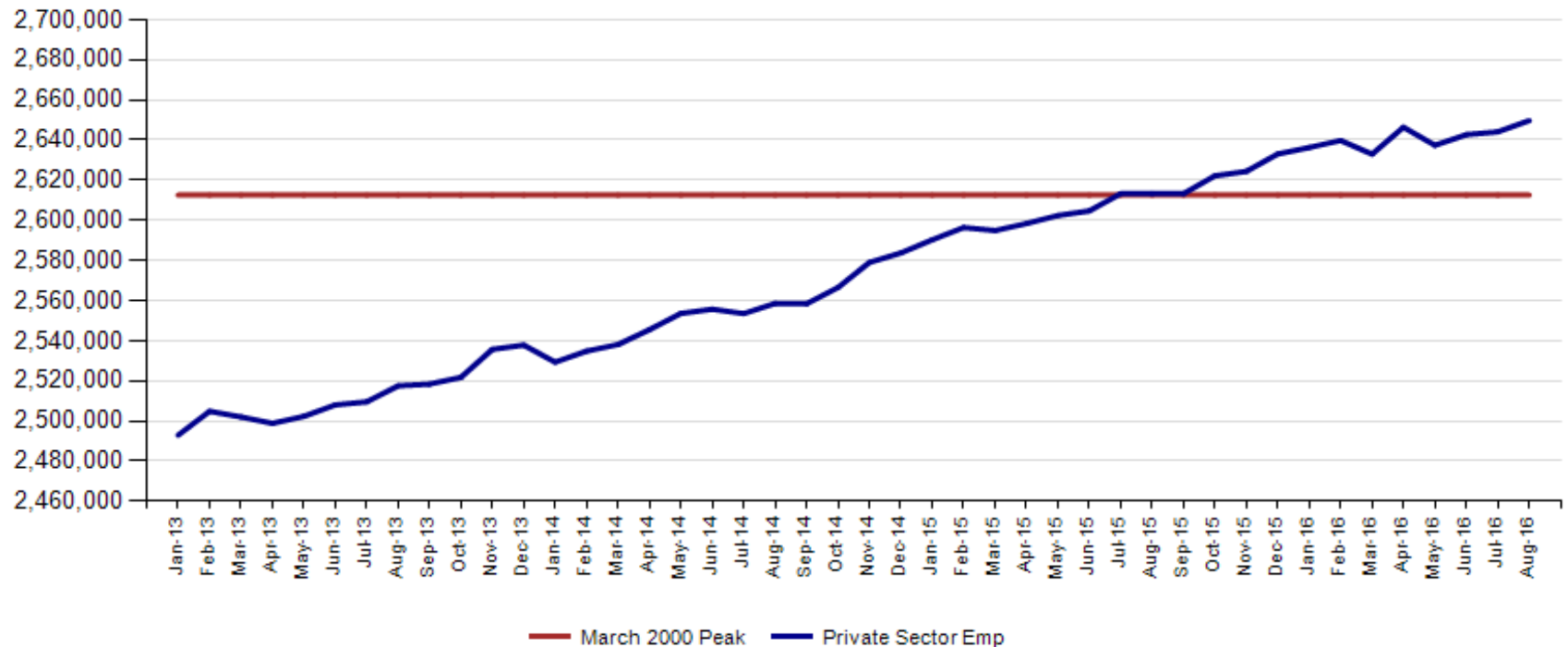
Indiana total private employment increased 5,600 over the month and has gains of 36,400 over the year.. **This is the 14th month above the prior peak of 2,612,600.**

- **Indiana private employment now stands at 2,649,700.**
- **Leisure and Hospitality had gains of 3,500.**
- **The All Other category had gains of 1,600.**
- **Financial Activities had gains of 400.**
- **Manufacturing had declines of 1,400.**
- **Construction had declines of 2,300.**



August Total private employment is now at 37,100 above the March 2000 Peak.
This is the 14th month above the prior peak.

Indiana Private Sector Employment





August Indiana private sector employment increased by 5,600 jobs over the month and is up 36,400 over the year. Professional & Business Services increased by 5,300 jobs over the month. Leisure and Hospitality grew by 3,500 and Health Care & Social Assistance grew by 2,600 jobs. Manufacturing went down by 1,400 jobs and is now down 4,300 since August of 2015.

IN Employment Change Over the Month, Year-to-Date and Over the Year (seasonally adjusted)

Industry	August 2015	December 2015	July 2016	August 2016	Month Change	Y-to-D Change	Y-to-Y Change
Private Educational & Health Services	454.3	459.5	472.6	472.4	-0.2	12.9	18.1
.....Private Educational Services	70.6	73.2	75.4	72.6	-2.8	-0.6	2.0
.....Health Care & Social Assistance	383.7	386.3	397.2	399.8	2.6	13.5	16.1
Manufacturing	519.4	520.2	516.5	515.1	-1.4	-5.1	-4.3
Professional & Business Services	329.2	327.9	321.7	327.0	5.3	-0.9	-2.2
Financial Activities	131.1	131.3	132.2	132.6	0.4	1.3	1.5
Construction	126.4	131.0	132.5	130.2	-2.3	-0.8	3.8
Leisure and Hospitality	301.5	304.6	303.9	307.4	3.5	2.8	5.9
Trade, Transportation & Utilities	584.4	592.9	601.0	599.7	-1.3	6.8	15.3
.....Trade	445.2	447.6	459.0	458.2	-0.8	10.6	13.0
.....Transportation, Warehousing & Utilities	139.2	145.3	142.0	141.5	-0.5	-3.8	2.3
All Other	167.0	165.7	163.7	165.3	1.6	-0.4	-1.7
Total Private	2,613.3	2,633.1	2,644.1	2,649.7	5.6	16.6	36.4
Government (Includes Public Schools & Hospitals)	429.9	426.6	427.7	425.3	-2.4	-1.3	-4.6
Total Nonfarm	3,043.2	3,059.7	3,071.8	3,075.0	3.2	15.3	31.8
United States Total Private	120,102.0	121,106.0	122,259.0	122,385.0	126.0	1,279.0	2,283.0



Total nonfarm is 57,800 over the March 2000 peak.

IN Statewide Estimates (seasonally adjusted) -- August 2016

Supersector	Private Empl. Peak March 2000	Private Empl. Trough July 2009	July 2016	August 2016	Change Since Peak	Change Since Trough	Month to Month Change
Private Educational & Health Services	330.1	411.1	472.6	472.4	142.3	61.3	-0.2
.....Private Educational Services	52.2	63.3	75.4	72.6	20.4	9.3	-2.8
.....Health Care & Social Assistance	277.9	347.8	397.2	399.8	121.9	52.0	2.6
Manufacturing	671.1	427.9	516.5	515.1	-156.0	87.2	-1.4
Professional & Business Services	260.5	255.9	321.7	327.0	66.5	71.1	5.3
Financial Activities	145.7	130.7	132.2	132.6	-13.1	1.9	0.4
Construction	154.1	116.5	132.5	130.2	-23.9	13.7	-2.3
Leisure and Hospitality	267.2	276.8	303.9	307.4	40.2	30.6	3.5
Trade, Transportation & Utilities	617.5	545.7	601.0	599.7	-17.8	54.0	-1.3
.....Trade	485.1	421.6	459.0	458.2	-26.9	36.6	-0.8
.....Transportation, Warehousing & Utilities	132.4	124.1	142.0	141.5	9.1	17.4	-0.5
All Other	166.4	158.6	163.7	165.3	-1.1	6.7	1.6
Total Private	2,612.6	2,323.2	2,644.1	2,649.7	37.1	326.5	5.6
Government (Includes Public Schools & Hospitals)	404.6	434.5	427.7	425.3	20.7	-9.2	-2.4
Total Nonfarm	3,017.2	2,757.7	3,071.8	3,075.0	57.8	317.3	3.2
United States Total Private	110,875.0	108,170.0	122,259.0	122,385.0	11,510.0	14,215.0	126.0



Indiana job growth over the year is under the National trend in private sector gains in August. Private Educational & Health Services and Trade Transportation and Utilities both are growing faster than the US over the year.

IN Employment Change Compared to the U.S.

Industry	Indiana Month to Month	U.S. Month to Month	Indiana vs U.S. Change	Indiana Year-to-Date	U.S. Year-to-Date	Indiana vs U.S. Change	Indiana Year-to-Year	U.S. Year-to-Year	Indiana vs U.S. Change
Private Educational & Health Services	0.0%	0.2%	UNDER	2.8%	1.7%	OVER	4.0%	2.8%	OVER
.....Private Educational Services	-3.7%	0.1%	UNDER	-0.8%	0.7%	UNDER	2.8%	1.8%	OVER
.....Health Care & Social Assistance	0.7%	0.2%	OVER	3.5%	1.9%	OVER	4.2%	3.0%	OVER
Manufacturing	-0.3%	-0.1%	UNDER	-1.0%	-0.3%	UNDER	-0.8%	-0.3%	UNDER
Professional & Business Services	1.6%	0.1%	OVER	-0.3%	1.5%	UNDER	-0.7%	2.7%	UNDER
Financial Activities	0.3%	0.2%	OVER	1.0%	1.6%	UNDER	1.1%	2.0%	UNDER
Construction	-1.7%	-0.1%	UNDER	-0.6%	0.7%	UNDER	3.0%	3.1%	UNDER
Leisure and Hospitality	1.2%	0.2%	OVER	0.9%	1.5%	UNDER	2.0%	2.8%	UNDER
Trade, Transportation & Utilities	-0.2%	0.1%	UNDER	1.1%	1.0%	OVER	2.6%	1.5%	OVER
.....Trade	-0.2%	0.1%	UNDER	2.4%	1.1%	OVER	2.9%	1.6%	OVER
.....Transportation, Warehousing & Utils	-0.4%	0.3%	UNDER	-2.6%	0.5%	UNDER	1.7%	1.0%	OVER
All Other	1.0%	0.1%	OVER	-0.2%	-0.3%	OVER	-1.0%	-0.2%	UNDER
Total Private	0.2%	0.1%	OVER	0.6%	1.1%	UNDER	1.4%	1.9%	UNDER
Government (Includes Public Schools & Hospitals)	-0.6%	0.1%	UNDER	-0.3%	0.8%	UNDER	-1.1%	0.7%	UNDER
Total Nonfarm	0.1%	0.1%	UNDER	0.5%	1.0%	UNDER	1.0%	1.7%	UNDER

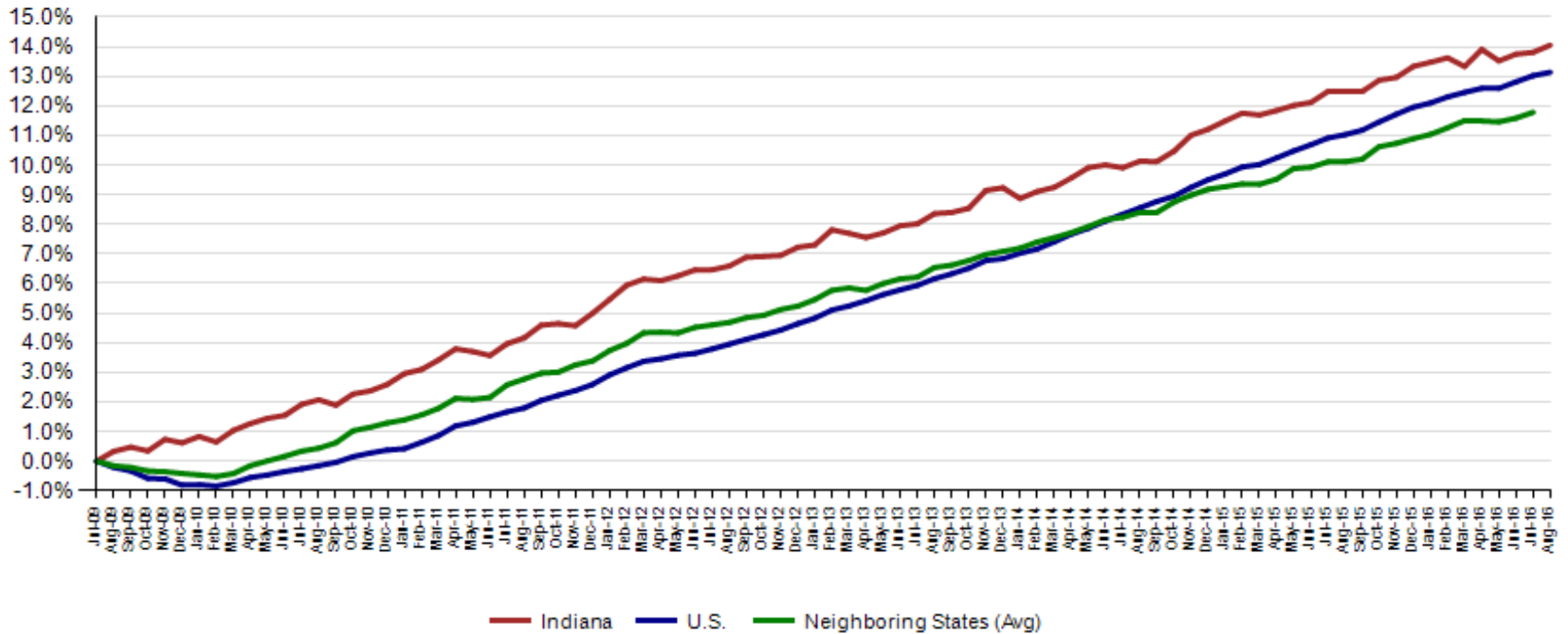


July Total Private preliminary estimates were revised up by 400. The change from June to July is now an increase of 12,400.

Revisions to July 2016 Estimates						
INDUSTRY TITLE	June	Jul Prel	Jul Rev	Revision	Chg from May.	Prel Chg from May.
Total Nonfarm	3059.4	3071.4	3071.8	0.4	12.4	12.0
Total Private	2642.7	2642.6	2644.1	1.5	1.4	-0.1
Goods Producing	654.7	654.3	655.1	0.8	0.4	-0.4
Service-Providing	2404.7	2417.1	2416.7	-0.4	12.0	12.4
Private Service Providing	1988.0	1988.3	1989.0	0.7	1.0	0.3
Construction	133.1	132.3	132.5	0.2	-0.6	-0.8
Manufacturing	515.5	515.9	516.5	0.6	1.0	0.4
Trade, Transportation, and Utilities	602.1	600.6	601.0	0.4	-1.1	-1.5
Wholesale Trade	120.1	119.2	119.0	-0.2	-1.1	-0.9
Retail Trade	339.5	339.6	340.0	0.4	0.5	0.1
Transportation, Warehousing, and Utilities	142.5	141.8	142.0	0.2	-0.5	-0.7
Information	31.4	31.4	31.4	0.0	0.0	0.0
Financial Activities	132.1	132.1	132.2	0.1	0.1	0.0
Finance and Insurance	97.8	97.4	97.3	-0.1	-0.5	-0.4
Real Estate and Rental and Leasing	34.3	34.7	34.9	0.2	0.6	0.4
Professional and Business Services	319.6	321.6	321.7	0.1	2.1	2.0
Professional, Scientific, and Technical Services	106.9	109.2	108.9	-0.3	2.0	2.3
Management of Companies and Enterprises	34.0	33.9	33.9	0.0	-0.1	-0.1
Admin & Support & Waste Mgmt & Remediation Services	178.7	178.5	178.9	0.4	0.2	-0.2
Education and Health Services	470.4	471.1	472.6	1.5	2.2	0.7
Educational Services	72.9	75.6	75.4	-0.2	2.5	2.7
Health Care and Social Assistance	397.5	395.5	397.2	1.7	-0.3	-2.0
Leisure and Hospitality	307.0	304.9	303.9	-1.0	-3.1	-2.1
Other Services	125.4	126.6	126.2	-0.4	0.8	1.2
Government	416.7	428.8	427.7	-1.1	11.0	12.1

Since the low point of employment of 2,323,200 in July 2009, private sector employment growth in Indiana has surpassed the U.S. (14.1% vs. 13.1%).

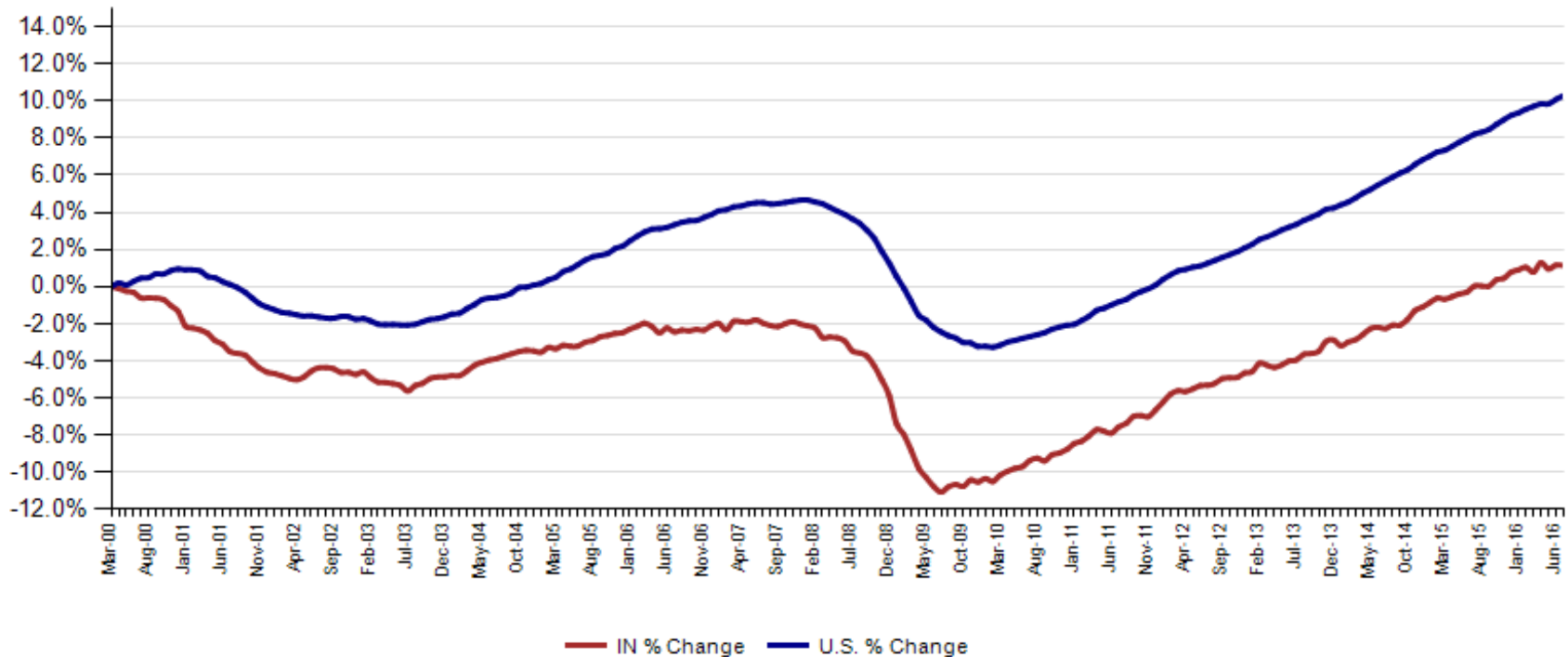
Private Sector Job Growth Since the Low Point of Employment in Indiana





Since Indiana's high point of employment (March 2000), private sector employment growth in Indiana has lagged the U.S. (1.4% growth vs. 10.4% nationally).

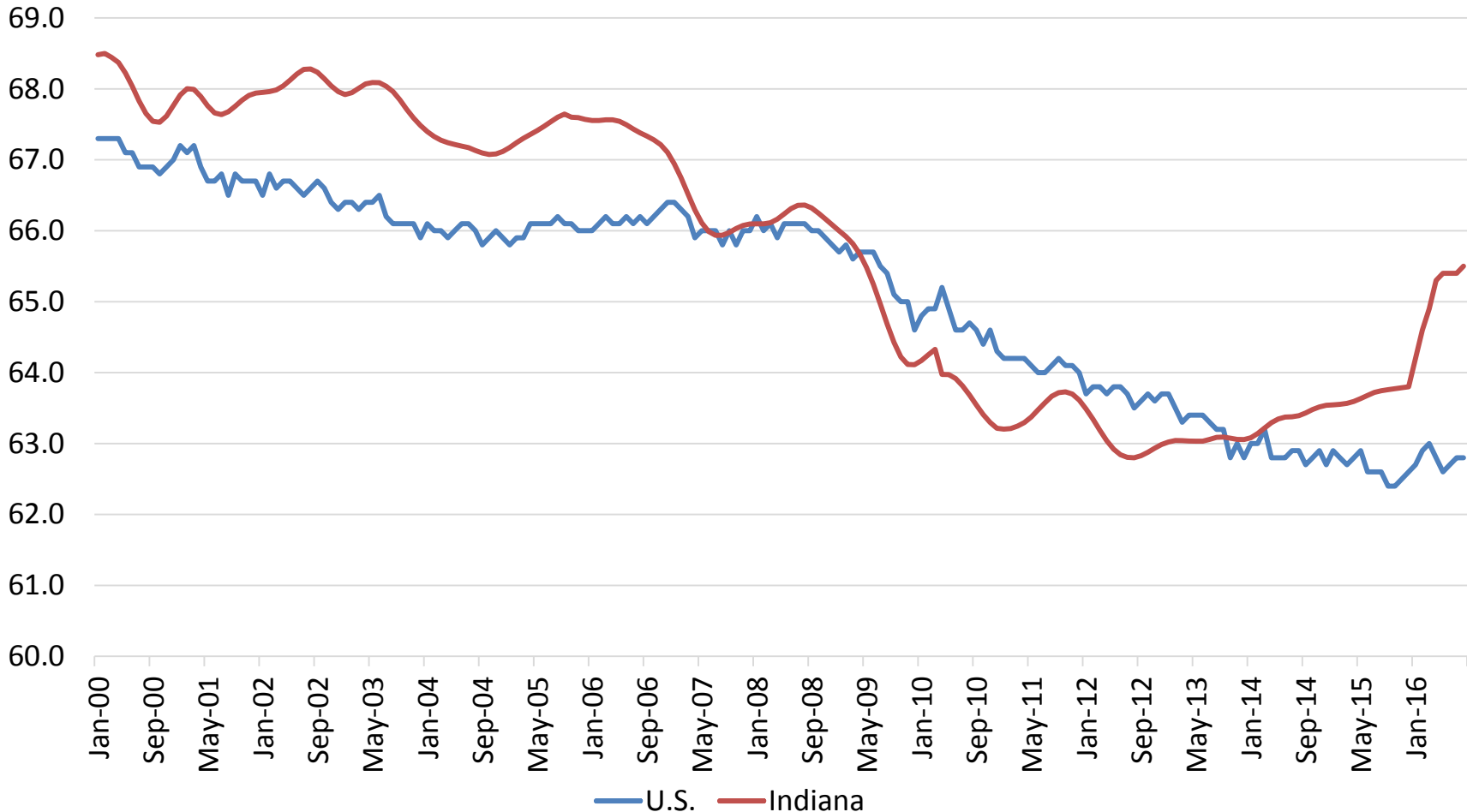
Private Sector Job Growth Since the Peak of Employment in Indiana



Source: Current Employment Statistics, seasonally adjusted



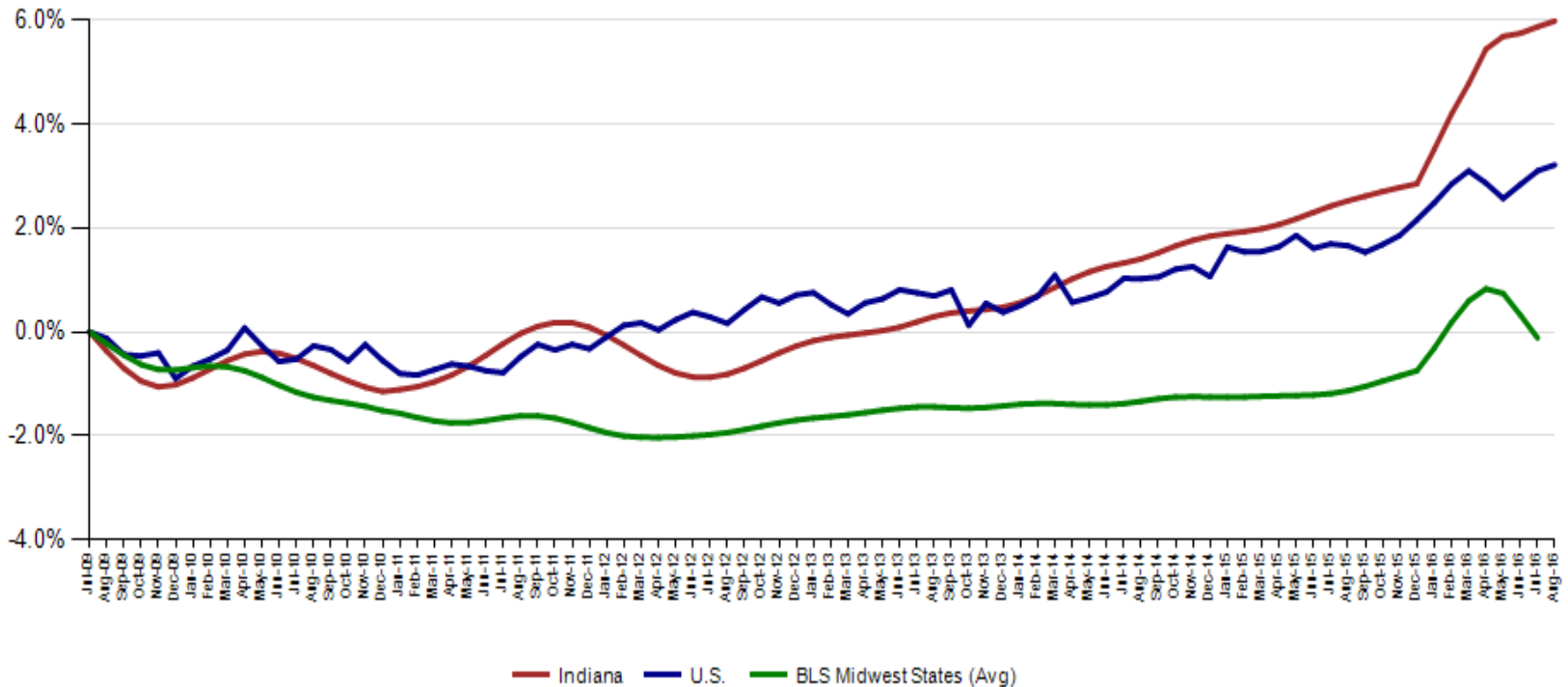
Indiana's Labor Force gained 3,516 over the month, 110,227 over the year, and 196,078 since January 2013. Indiana's labor force stands at 3,379,290. Indiana's Labor Force Participation Rate is at 65.5%. This is the highest it has been since May 2009.





Indiana's Seasonally Adjusted Labor Force is now at 3,379,290 and the number of employed is at 3,226,385. Both of these numbers represent all time highs for Indiana.

Labor Force Change Since July 2009 Indiana Trough (seasonally adjusted)





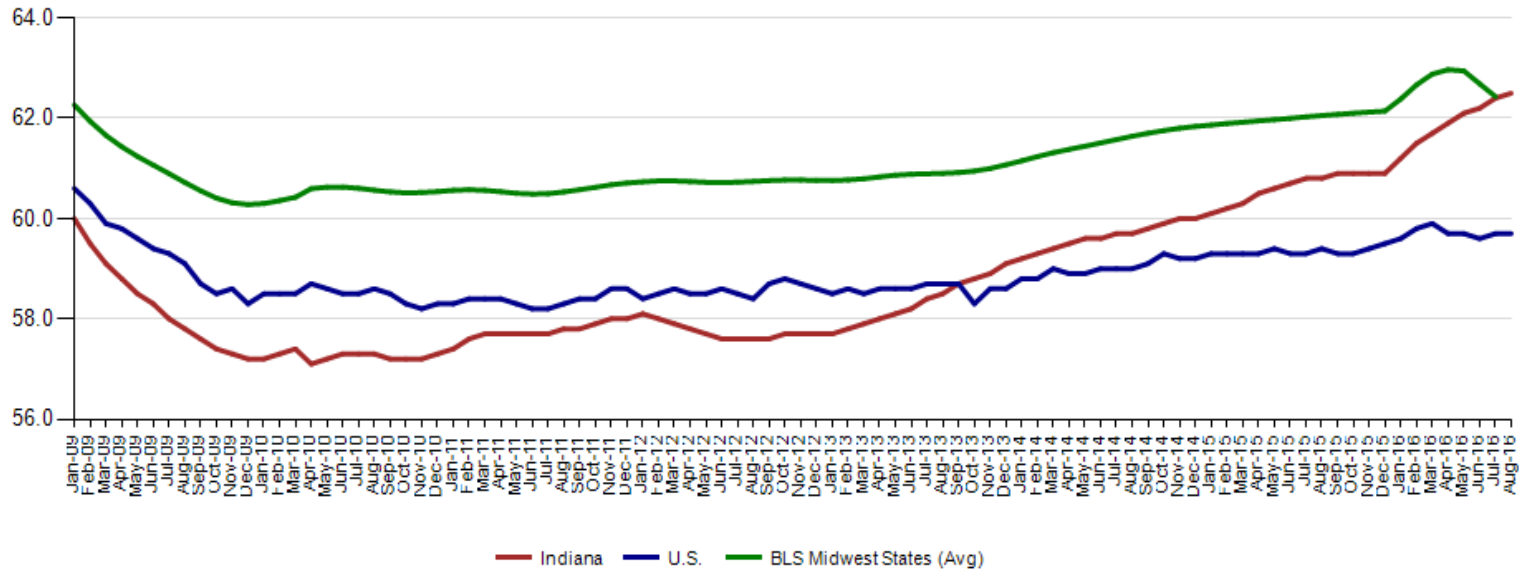
Indiana's Employment to Population Ratio is 62.5%. This is the highest recorded since June 2008. The US stands at 59.7%.

Employment to Population Ratio



Indiana's Employment to Population rate of 62.5 has now passed the average for our BLS Regional States 62.4 (July 2016).

Employment to Population Ratio (seasonally adjusted)



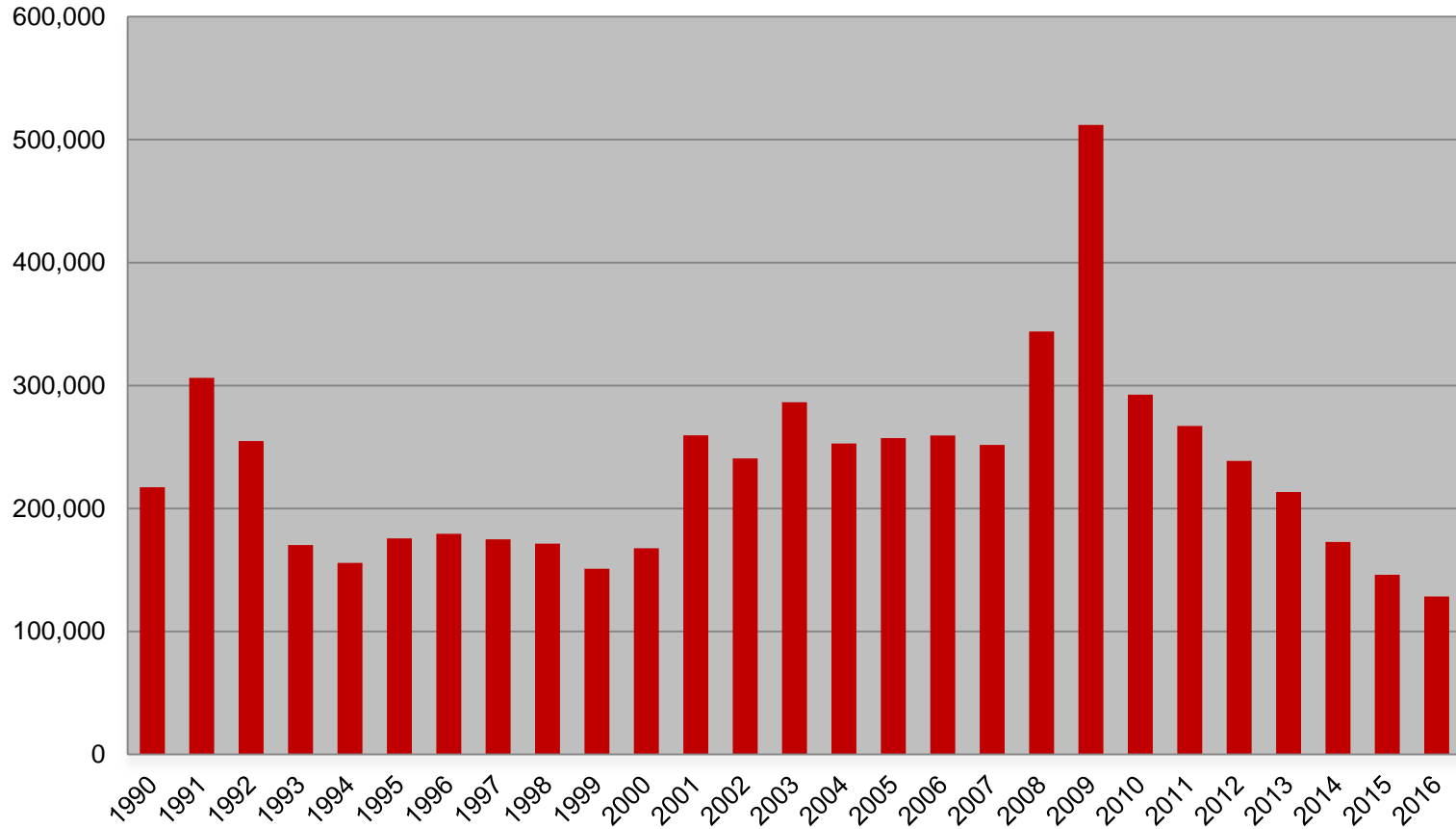


Midwest Comparison Rates: Seasonally
Adjusted Over the Year and Over the Month
(confidential and preliminary)

	August 2015	July 2016	August 2016	Monthly change	Yearly change
Indiana	4.6%	4.6%	4.5%	-0.1%	-0.1%
U.S.	5.1%	4.9%	4.9%	0.0%	-0.2%
Illinois	5.8%	5.8%		-5.8%	-5.8%
Kentucky	5.3%	5.0%	4.9%	-0.1%	-0.4%
Michigan	5.1%	4.5%	4.5%	0.0%	-0.6%
Minnesota	3.6%	3.9%		-3.9%	-3.6%
Ohio	4.6%	4.8%	4.7%	-0.1%	0.1%
Wisconsin	4.6%	4.2%		-4.2%	-4.6%



Weekly Initial Claims – 36 weeks aggregate





Regular UI Claims – Reference Week (12th of the month) Input to LAUS Unemployment Rate Model Declines over the month - and over the year

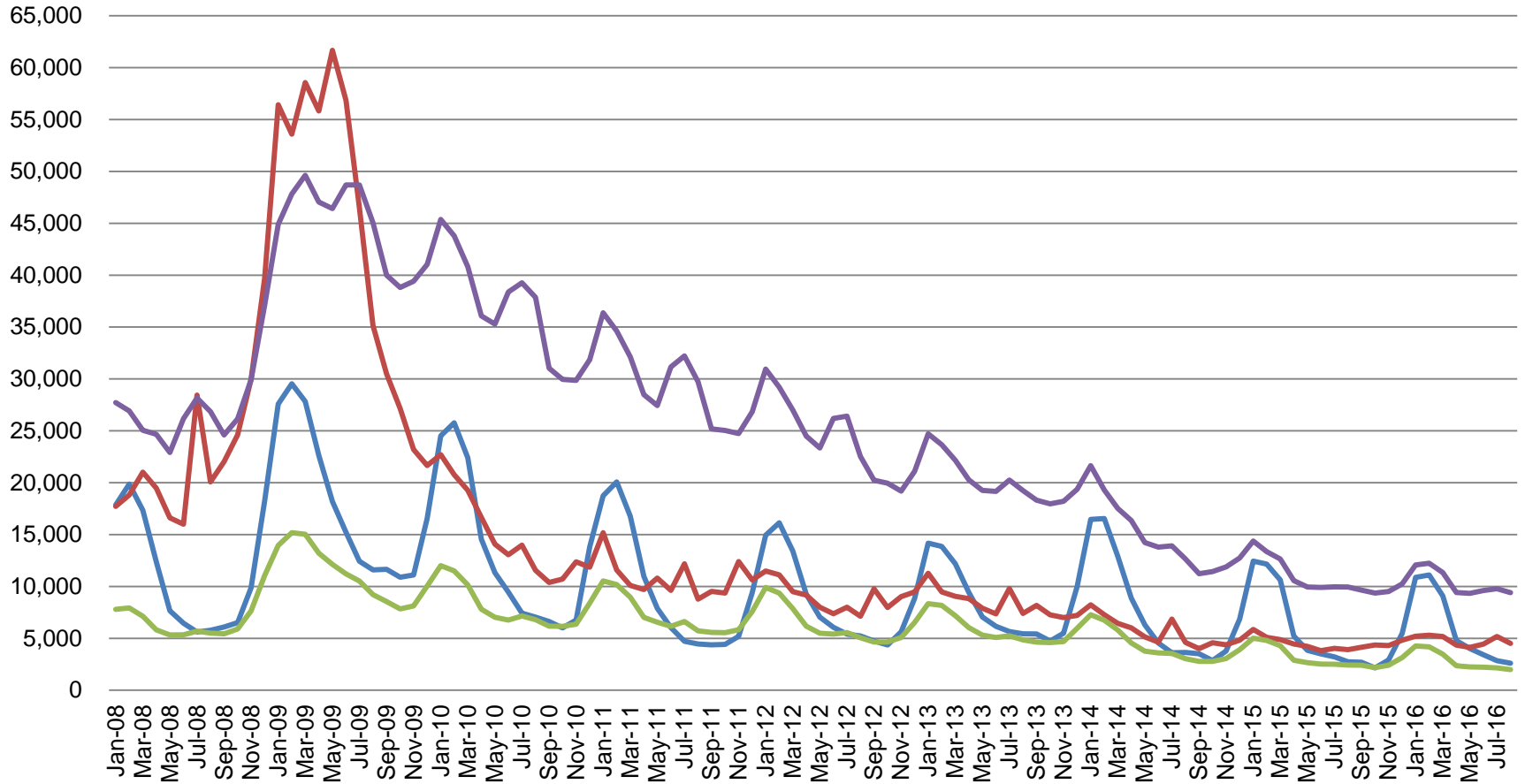
Without earnings – Reference week claims

	2006	2007	2008	2009	2010	2011	2012	2013	2014	2015	2016	OTM Change	OTY Change
JANUARY	65,898	71,296	75,294	150,888	105,910	84,706	71,042	63,223	49,377	41,333	36,555	10,306	(4,778)
FEBRUARY	67,347	75,432	78,068	154,388	103,432	80,852	69,570	60,183	52,316	39,282	36,909	354	(2,373)
MARCH	59,716	64,936	74,759	157,257	93,469	71,696	60,752	54,578	45,928	35,755	32,439	(4,470)	(3,316)
APRIL	48,103	53,325	64,948	143,842	74,481	59,036	51,652	48,548	39,717	25,597	23,895	(8,544)	(1,702)
MAY	46,779	46,002	55,480	141,174	66,779	54,680	46,328	42,997	32,460	22,807	22,300	(1,595)	(507)
JUNE	45,533	46,350	57,228	136,670	67,996	55,021	46,820	41,722	29,524	22,030	22,025	(275)	(5)
JULY	53,424	51,141	72,032	121,336	69,447	58,031	47,268	44,597	30,845	22,341	22,326	301	(15)
AUGUST	45,021	43,887	61,985	103,509	62,976	51,710	42,134	39,998	26,061	21,472	20,459	(1,867)	(1,013)
SEPTEMBER	41,247	42,500	61,548	92,680	58,280	46,824	41,955	39,563	23,685	20,941			
OCTOBER	42,487	42,313	67,306	86,275	58,317	46,909	39,467	37,778	23,768	19,917			
NOVEMBER	43,868	45,362	81,466	82,451	58,846	51,201	41,018	38,517	25,315	21,199			
DECEMBER	53,566	54,201	109,651	91,814	65,279	55,104	46,371	42,484	30,982	26,249			



Regular UI Claims by Industry

For the Reference Week of Each Month



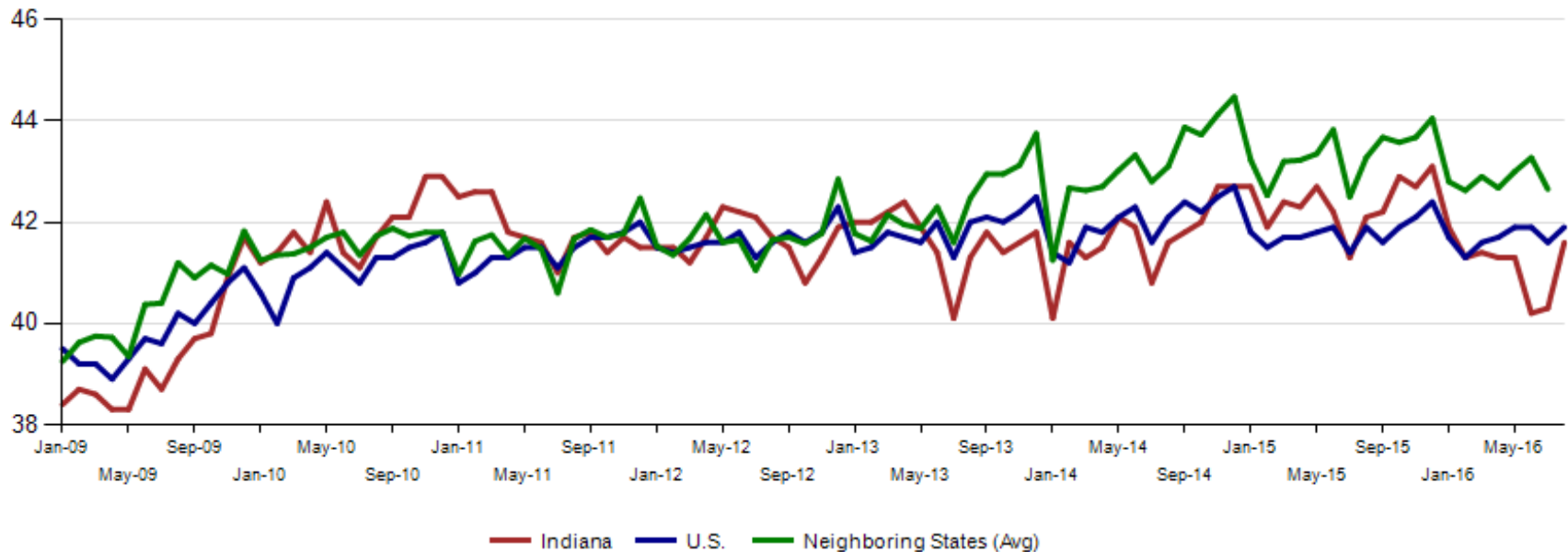
Source: ETA 203

Construction Manufacturing Admin. and Support All Other



Average weekly hours for Indiana manufacturing rose by 1.3 hours to 41.6 in August 2016. This is the highest this number had been since January 2016. Nationally, manufacturing weekly hours increased to 41.9. This is the sixth month in a row that the National average weekly hours was higher than Indiana.

Avg. Weekly Manufacturing Production Hours (non seasonally adjusted)





Internal Indiana Career Connect job orders are 65,770 in August. Health Care & Social Services, Retail Trade and Administrative & Support & Waste Management & Remediation Services (this includes temp help services) as usual lead the way. Education did show a tremendous surge over the summer months compared to a year ago.

NAICS title	Aug-2016	Prior Year			Current Year			Change over Prior Year			Current Year Including External			Current Duration (days)
	June	July	August	June	July	August	June	July	August	June	July	August	August	
Total	6,716	6,616	7,394	9,511	10,144	10,109	42%	53%	37%	60,931	62,692	65,770	51	
Health Care and Social Services	1,397	1,405	1,465	2,182	2,353	2,118	56%	67%	45%	14,245	11,046	14,563	41	
Retail Trade	574	601	708	826	835	911	44%	39%	29%	7,584	11,252	9,331	40	
Admin. & Support & Waste Mgt. & Rem. Services	992	833	955	1,193	1,032	1,244	20%	24%	30%	7,308	7,620	8,143	55	
Manufacturing	1,164	1,058	1,254	1,666	1,647	1,698	43%	56%	35%	4,562	4,314	4,958	55	
Transportation & Warehousing	330	347	359	448	511	440	36%	47%	23%	6,567	5,115	4,701	67	
Accommodation and Food Services	251	172	179	260	619	654	4%	260%	265%	2,581	6,017	4,673	37	
Professional, Scientific, and Technical Services	443	435	579	593	681	698	34%	57%	21%	3,246	3,398	3,723	64	
Educational Services	154	171	135	644	752	663	318%	340%	391%	3,786	3,198	3,210	36	
Finance and Insurance	177	236	358	196	249	270	11%	6%	-25%	2,523	2,902	2,952	80	
Wholesale Trade	354	442	434	412	377	390	16%	-15%	-10%	2,233	2,255	2,574	41	
Information	166	224	167	310	383	275	87%	71%	65%	1,470	1,568	1,629	40	
Other Services(Except Public Administration)	154	157	216	160	170	171	4%	8%	-21%	895	1,037	1,247	107	
Real Estate and Rental and Leasing	76	59	70	99	107	102	30%	81%	46%	700	956	1,126	64	
Public Administration	108	150	153	181	143	153	68%	-5%	0%	739	557	993	87	
Management of Companies and Enterprises	8	12	16	21	20	10	163%	67%	-38%	1,617	810	844	100	
Construction	197	176	212	165	124	147	-16%	-30%	-31%	481	303	572	88	
Utilities	86	74	64	78	72	102	-9%	-3%	59%	212	154	265	42	
Arts, Entertainment, and Recreation	20	33	31	18	25	23	-10%	-24%	-26%	71	92	155	65	
Agriculture, Forestry, Fishing and Hunting	30	19	23	17	15	18	-43%	-21%	-22%	46	43	59	104	
Mining	26	2	9	25	20	18	-4%	900%	100%	48	46	48	27	
Unallocated	9	10	7	17	9	4	89%	-10%	-43%	17	9	4	181	



Median Household Income in the United States: 2015

