



INDIANA
DEPARTMENT OF
WORKFORCE
DEVELOPMENT

Indiana's Employment and Labor Force Estimates April 2018

05/16/2018

Key Points

- **Indiana's unemployment rate was unchanged over the month at 3.2% for April 2018.** The U.S. rate fell 0.2% to 3.9%.
- Indiana's rate has decreased 0.3 percentage points over the year from April 2017.
- Indiana's Labor Force increased over the month by 11,655; due to an increase in residence employment of 10,918 and an increase in unemployment of 737.
- Indiana's Labor Force has increased 16,583 over the year.
- Indiana's Labor Force Participation Rate is at 64.0%. This remains above the U.S. Labor Force Participation rate which stands at 62.8%.

Key Points

- Indiana's total private employment decreased by 7,000 over the month and had gains of 23,900 over the year.
- Indiana private employment now stands at 2,698,400.
- All Other gained 1,200 over the month.
- Manufacturing gained 400 over the month.
- Financial Activities lost 300 jobs over the month.
- Leisure and Hospitality lost 700 jobs over the month
- Private Educational & Health Services lost 1,000 jobs over the month.
- Professional and Business Services lost 1,800 jobs over the month.
- Construction lost 2,300 jobs over the month.
- Trade, Transportation & Utilities lost 2,500 jobs over the month.



Employed persons (Current Population Survey)

Persons 16 years and over in the civilian noninstitutional population who, during the reference week, (a) did any work at all (at least 1 hour) as paid employees; worked in their own business, profession, or on their own farm, or worked 15 hours or more as unpaid workers in an enterprise operated by a member of the family; and (b) all those who were not working but who had jobs or businesses from which they were temporarily absent because of vacation, illness, bad weather, childcare problems, maternity or paternity leave, labor-management dispute, job training, or other family or personal reasons, whether or not they were paid for the time off or were seeking other jobs. Each employed person is counted only once, even if he or she holds more than one job. Excluded are persons whose only activity consisted of work around their own house (painting, repairing, or own home housework) or volunteer work for religious, charitable, and other organizations.

Unemployed persons (Current Population Survey)

Persons aged 16 years and older who had no employment during the reference week, were available for work, except for temporary illness, and had made specific efforts to find employment sometime during the 4-week period ending with the reference week. Persons who were waiting to be recalled to a job from which they had been laid off need not have been looking for work to be classified as unemployed.

Marginally attached workers (Current Population Survey)

Persons not in the labor force who want and are available for work, and who have looked for a job sometime in the prior 12 months (or since the end of their last job if they held one within the past 12 months), but were not counted as unemployed because they had not searched for work in the 4 weeks preceding the survey. Discouraged workers are a subset of the marginally attached.

Discouraged workers (Current Population Survey)

Persons not in the labor force who want and are available for a job and who have looked for work sometime in the past 12 months (or since the end of their last job if they held one within the past 12 months), but who are not currently looking because they believe there are no jobs available or there are none for which they would qualify.

Current Employment Statistics (CES) Compared to Local Area Unemployment Statistics (LAUS)

LAUS (Labor Force by Residence)

- An estimate of employment based on where the employee lives, rather than where they work
- **This is a count of people not jobs**
- Used in calculating the labor force

CES (Employment by Job)

- An estimate or count of employment based on the location of the job regardless of the worker's residence
- Also called nonag wage and salary or nonfarm employment
- **This counts jobs, not people**
- Used in Quarterly Census of Employment and Wages (QCEW) , Occupational Employment Statistics (OES) and CES data



April 2018 total private employment is 9,500 above the December 2017 peak.

Indiana Private Sector Employment





April 2018 Indiana private sector employment decreased by 7,000 jobs over the month but is still up 23,900 over the year. The All Other category gained 1,200 jobs and Manufacturing gained 400 jobs over the month. Construction lost 2,300 jobs.

IN Employment Change Over the Month, Year-to-Date and Over the Year (seasonally adjusted)

Industry	April 2017	December 2017	March 2018	April 2018	Month Change	Y-to-D Change	Y-to-Y Change
Private Educational & Health Services	465.7	476.7	475.6	474.6	-1.0	-2.1	8.9
.....Private Educational Services	62.0	63.8	63.2	62.2	-1.0	-1.6	0.2
.....Health Care & Social Assistance	403.7	412.9	412.4	412.4	0.0	-0.5	8.7
Manufacturing	529.7	532.7	534.7	535.1	0.4	2.4	5.4
Professional & Business Services	335.6	337.7	341.0	339.2	-1.8	1.5	3.6
Financial Activities	135.6	135.8	135.6	135.3	-0.3	-0.5	-0.3
Construction	137.8	138.7	146.1	143.8	-2.3	5.1	6.0
Leisure and Hospitality	308.1	306.6	306.7	306.0	-0.7	-0.6	-2.1
Trade, Transportation & Utilities	597.4	598.1	604.9	602.4	-2.5	4.3	5.0
.....Trade	453.1	452.4	458.2	456.1	-2.1	3.7	3.0
.....Transportation, Warehousing & Utilities	144.3	145.7	146.7	146.3	-0.4	0.6	2.0
All Other	164.6	162.6	160.8	162.0	1.2	-0.6	-2.6
Total Private	2,674.5	2,688.9	2,705.4	2,698.4	-7.0	9.5	23.9
Government (Includes Public Schools & Hospitals)	421.4	426.0	426.8	428.1	1.3	2.1	6.7
Total Nonfarm	3,095.9	3,114.9	3,132.2	3,126.5	-5.7	11.6	30.6
United States Total Private	123,829.0	125,294.0	125,938.0	126,106.0	168.0	812.0	2,277.0

All Other includes: Mining and Logging, Information, Repair and Maintenance Services, Personal & Laundry Services, Religious, Grant Making, Civic, Professional and Similar Organizations.

Source: Current Employment Statistics, seasonally adjusted



April 2018 estimates show Indiana has gained 375,200 in Private jobs since the July 2009 trough. Manufacturing has accounted for 108,200 of those jobs. Construction has gained 27,300.

IN Statewide Estimates (seasonally adjusted) -- April 2018

Supersector	Private Empl. Peak Dec 2017	Private Empl. Trough July 2009	March 2018	April 2018	Month to Month Change	Change Since Peak	Change Since Trough	% Month to Month Change
Private Educational & Health Services	476.7	411.1	475.6	474.6	-1.0	-2.1	63.5	-0.2%
.....Private Educational Services	63.8	63.3	63.2	62.2	-1.0	-1.6	-1.1	-1.6%
.....Health Care & Social Assistance	412.9	347.8	412.4	412.4	0.0	-0.5	64.6	0.0%
Manufacturing	532.7	426.9	534.7	535.1	0.4	2.4	108.2	0.1%
Professional & Business Services	337.7	256.9	341.0	339.2	-1.8	1.5	82.3	-0.5%
Financial Activities	135.8	130.7	135.6	135.3	-0.3	-0.5	4.6	-0.2%
Construction	138.7	116.5	146.1	143.8	-2.3	5.1	27.3	-1.6%
Leisure and Hospitality	306.6	276.8	306.7	306.0	-0.7	-0.6	29.2	-0.2%
Trade, Transportation & Utilities	598.1	545.7	604.9	602.4	-2.5	4.3	56.7	-0.4%
.....Trade	452.4	421.6	458.2	456.1	-2.1	3.7	34.5	-0.5%
.....Transportation, Warehousing & Utilities	145.7	124.1	146.7	146.3	-0.4	0.6	22.2	-0.3%
All Other	162.6	158.6	160.8	162.0	1.2	-0.6	3.4	0.7%
Total Private	2,688.9	2,323.2	2,705.4	2,698.4	-7.0	9.5	375.2	-0.3%
Government (Includes Public Schools & Hospitals)	426.0	434.5	426.8	428.1	1.3	2.1	-6.4	0.3%
Total Nonfarm	3,114.9	2,757.7	3,132.2	3,126.5	-5.7	11.6	368.8	-0.2%
United States Total Private	125,294.0	108,159.0	125,938.0	126,106.0	168.0	812.0	17,947.0	0.1%



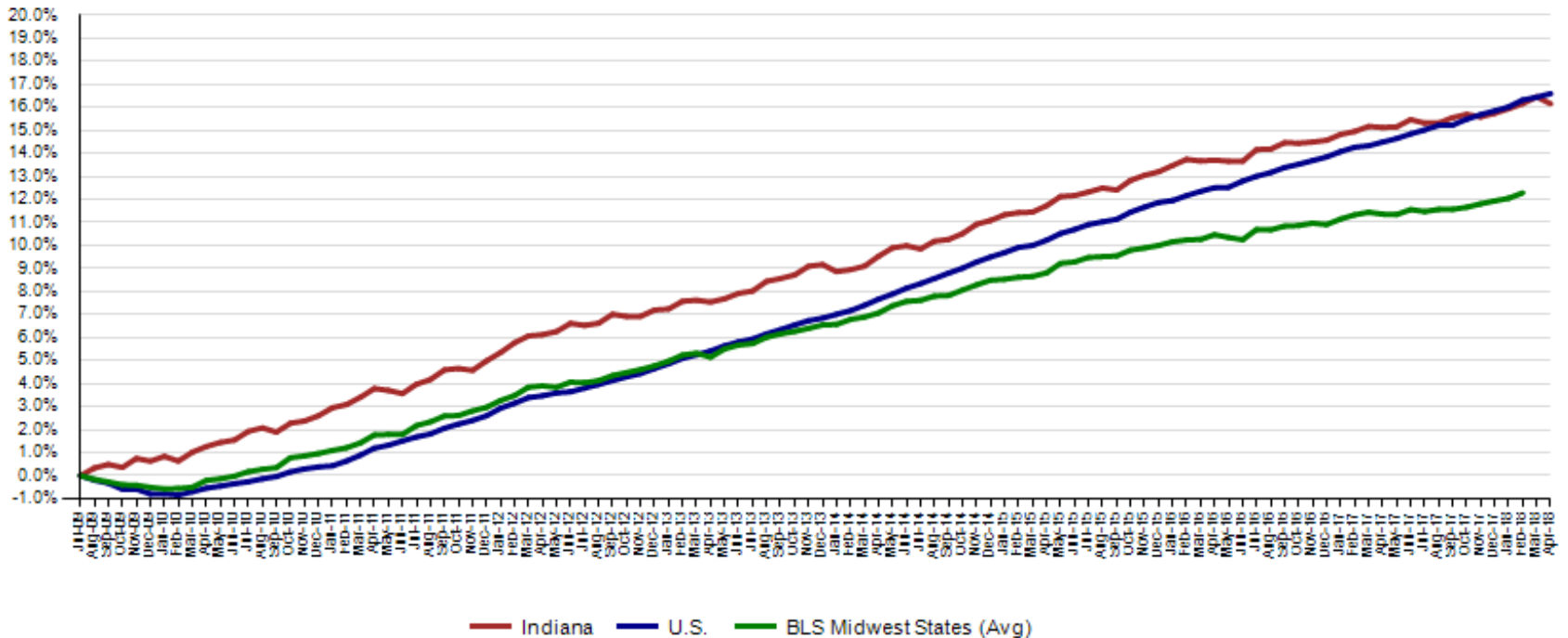
April Indiana private sector job growth over the month declined by 0.3%, compared to the national growth of 0.1%. Most Indiana industry sectors showed over the month losses except for the “All Other” category.

IN Employment Change Compared to the U.S.

Industry	Indiana Month to Month	U.S. Month to Month	Indiana vs U.S. Change	Indiana Year-to-Date	U.S. Year-to-Date	Indiana vs U.S. Change	Indiana Year-to-Year	U.S. Year-to-Year	Indiana vs U.S. Change
Private Educational & Health Services	-0.2%	0.1%	UNDER	-0.4%	0.6%	UNDER	1.9%	1.9%	OVER
.....Private Educational Services	-1.6%	0.0%	UNDER	-2.5%	0.0%	UNDER	0.3%	1.3%	UNDER
.....Health Care & Social Assistance	0.0%	0.1%	UNDER	-0.1%	0.7%	UNDER	2.2%	2.0%	OVER
Manufacturing	0.1%	0.2%	UNDER	0.5%	0.8%	UNDER	1.0%	2.0%	UNDER
Professional & Business Services	-0.5%	0.3%	UNDER	0.4%	0.9%	UNDER	1.1%	2.5%	UNDER
Financial Activities	-0.2%	0.0%	UNDER	-0.4%	0.4%	UNDER	-0.2%	1.5%	UNDER
Construction	-1.6%	0.2%	UNDER	3.7%	1.4%	OVER	4.4%	3.7%	OVER
Leisure and Hospitality	-0.2%	0.1%	UNDER	-0.2%	0.4%	UNDER	-0.7%	1.7%	UNDER
Trade, Transportation & Utilities	-0.4%	0.0%	UNDER	0.7%	0.5%	OVER	0.8%	1.1%	UNDER
.....Trade	-0.5%	0.0%	UNDER	0.8%	0.4%	OVER	0.7%	0.6%	OVER
.....Transportation, Warehousing & Utils	-0.3%	0.0%	UNDER	0.4%	0.9%	UNDER	1.4%	2.7%	UNDER
All Other	0.7%	0.3%	OVER	-0.4%	0.6%	UNDER	-1.6%	1.4%	UNDER
Total Private	-0.3%	0.1%	UNDER	0.4%	0.6%	UNDER	0.9%	1.8%	UNDER
Government (Includes Public Schools & Hospitals)	0.3%	0.0%	OVER	0.5%	-0.1%	OVER	1.6%	0.0%	OVER
Total Nonfarm	-0.2%	0.1%	UNDER	0.4%	0.5%	UNDER	1.0%	1.6%	UNDER

Since the low point of employment in July 2009, private sector employment growth in Indiana trails the U.S. growth rate. Indiana is now at 16.2% while the U.S. is at 16.6% through April 2018.

Private Sector Job Growth Since the Low Point of Employment in Indiana





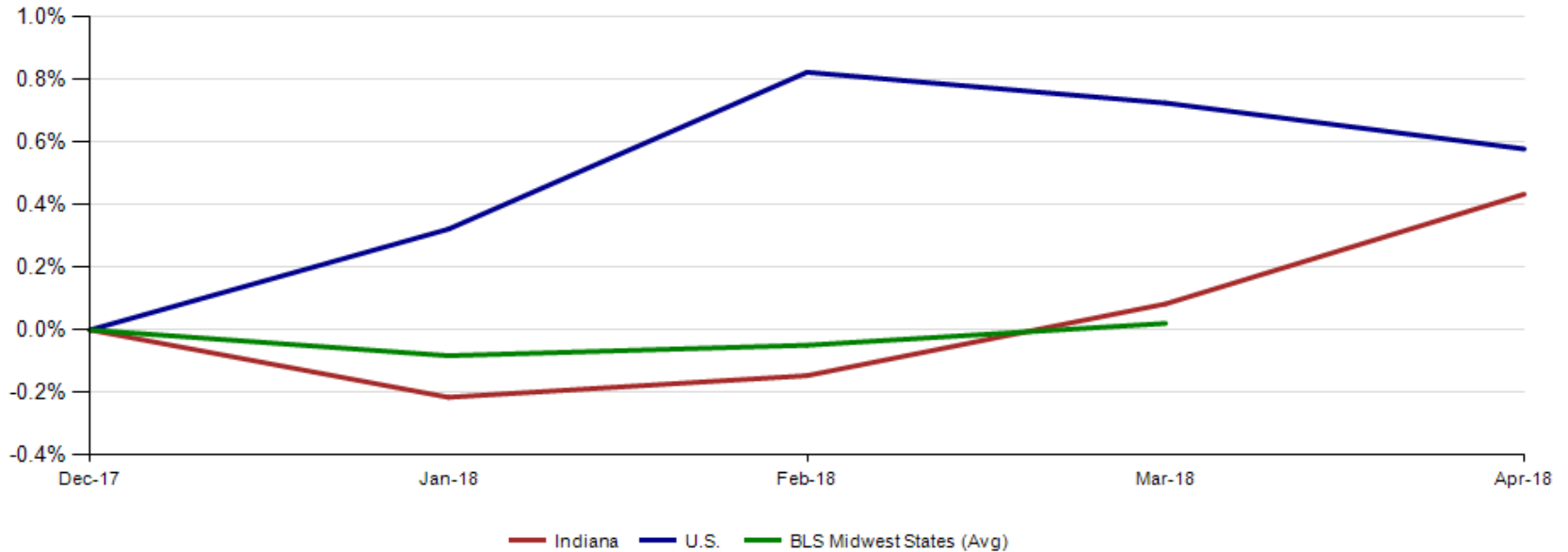
CES April Total Non Farm preliminary estimates were revised up 2,600 jobs. Private employment was revised up by 2,500 jobs. The change from February to March is now an increase of 7,200 in Total Non-Farm and an increase of 6,800 in private employment.

Revisions to March 2018 Estimates						
INDUSTRY TITLE	Feb	Mar Prev	Mar Rev	Revision	Chg from Feb	Pre Chg from Feb
Total Nonfarm	3125.0	3129.6	3132.2	2.6	7.2	4.6
Total Private	2698.6	2702.9	2705.4	2.5	6.8	4.3
Goods Producing	683.9	685.5	686.9	1.4	3.0	1.6
Service-Providing	2441.1	2444.1	2445.3	1.2	4.2	3.0
Private Service Providing	2014.7	2017.4	2018.5	1.1	3.8	2.7
Construction	144.0	145.1	146.1	1.0	2.1	1.1
Manufacturing	533.9	534.4	534.7	0.3	0.8	0.5
Trade, Transportation, and Utilities	601.7	604.3	604.9	0.6	3.2	2.6
Wholesale Trade	119.4	119.4	119.2	-0.2	-0.2	0.0
Retail Trade	336.3	338.5	339.0	0.5	2.7	2.2
Transportation, Warehousing, and Utilities	146.0	146.4	146.7	0.3	0.7	0.4
Information	29.5	29.1	29.0	-0.1	-0.5	-0.4
Financial Activities	135.9	135.7	135.6	-0.1	-0.3	-0.2
Finance and Insurance	99.8	99.7	99.6	-0.1	-0.2	-0.1
Real Estate and Rental and Leasing	36.1	36.0	36.0	0.0	-0.1	-0.1
Professional and Business Services	340.4	340.7	341.0	0.3	0.6	0.3
Professional, Scientific, and Technical Services	114.0	114.0	114.7	0.7	0.7	0.0
Management of Companies and Enterprises	35.1	35.4	35.4	0.0	0.3	0.3
Admin & Support & Waste Mgmt & Remediation Services	191.3	191.3	190.9	-0.4	-0.4	0.0
Education and Health Services	475.4	475.6	475.6	0.0	0.2	0.2
Educational Services	63.8	63.4	63.2	-0.2	-0.6	-0.4
Health Care and Social Assistance	411.6	412.2	412.4	0.2	0.8	0.6
Leisure and Hospitality	306.7	306.4	306.7	0.3	0.0	-0.3
Other Services	125.1	125.6	125.7	0.1	0.6	0.5
Government	426.4	426.7	426.8	0.1	0.4	0.3

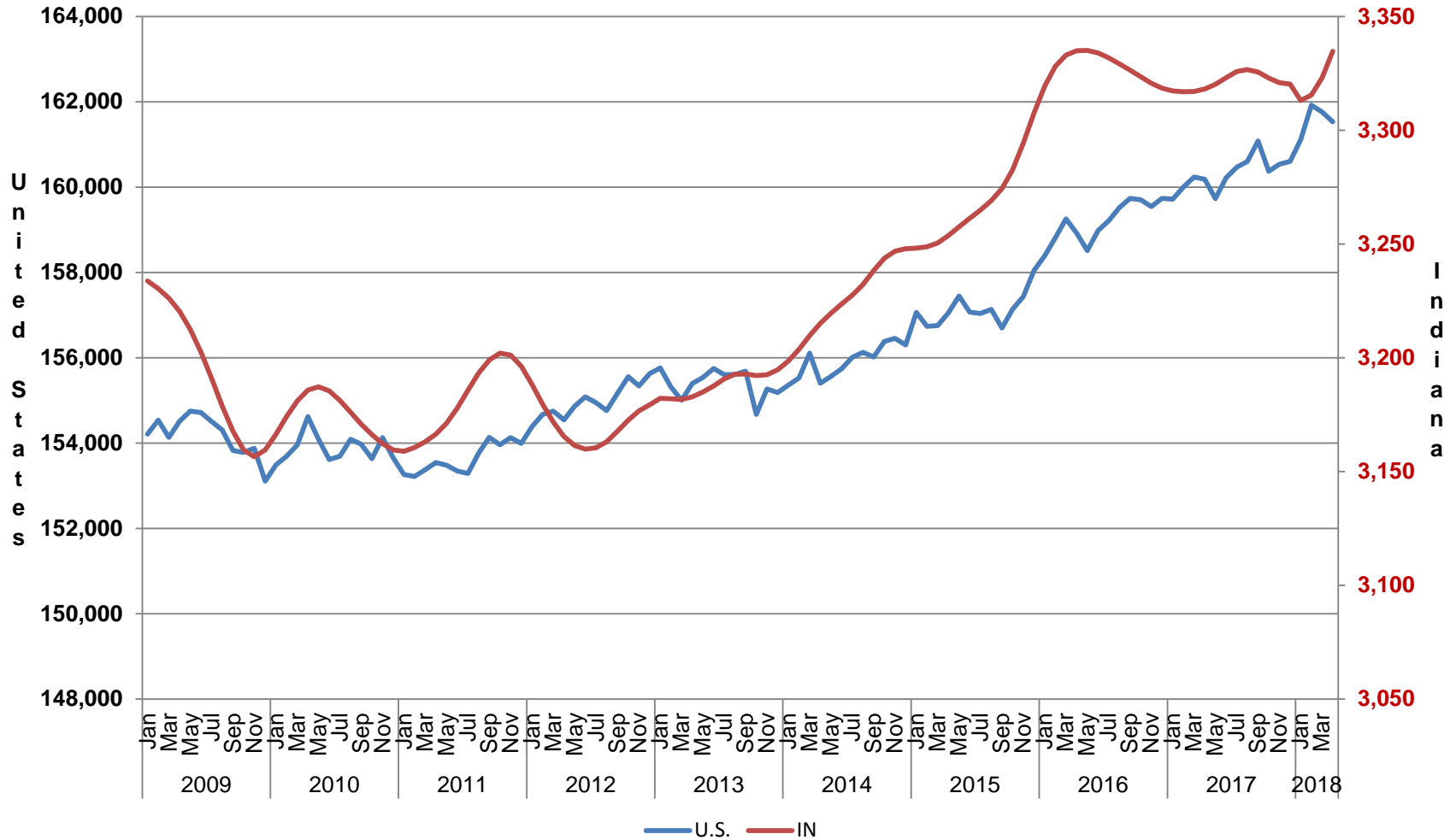


Indiana's April seasonally adjusted labor force is now at 3,334,681 up 11,655 from March. The number of employed is at 3,228,873 an increase of 10,918 over the month. An estimated 105,808 individuals are currently unemployed and seeking employment.

Labor Force Change Since December 2017 Indiana Peak (seasonally adjusted)



Indiana & U.S. Labor Force, 2007-2018 (in 1000s)





Not in Labor Force by Gender and Age April 2017-March 2018

Table b. Civilians not in the labor force by sex and age, May 2017 - April 2018 (based on CPS)

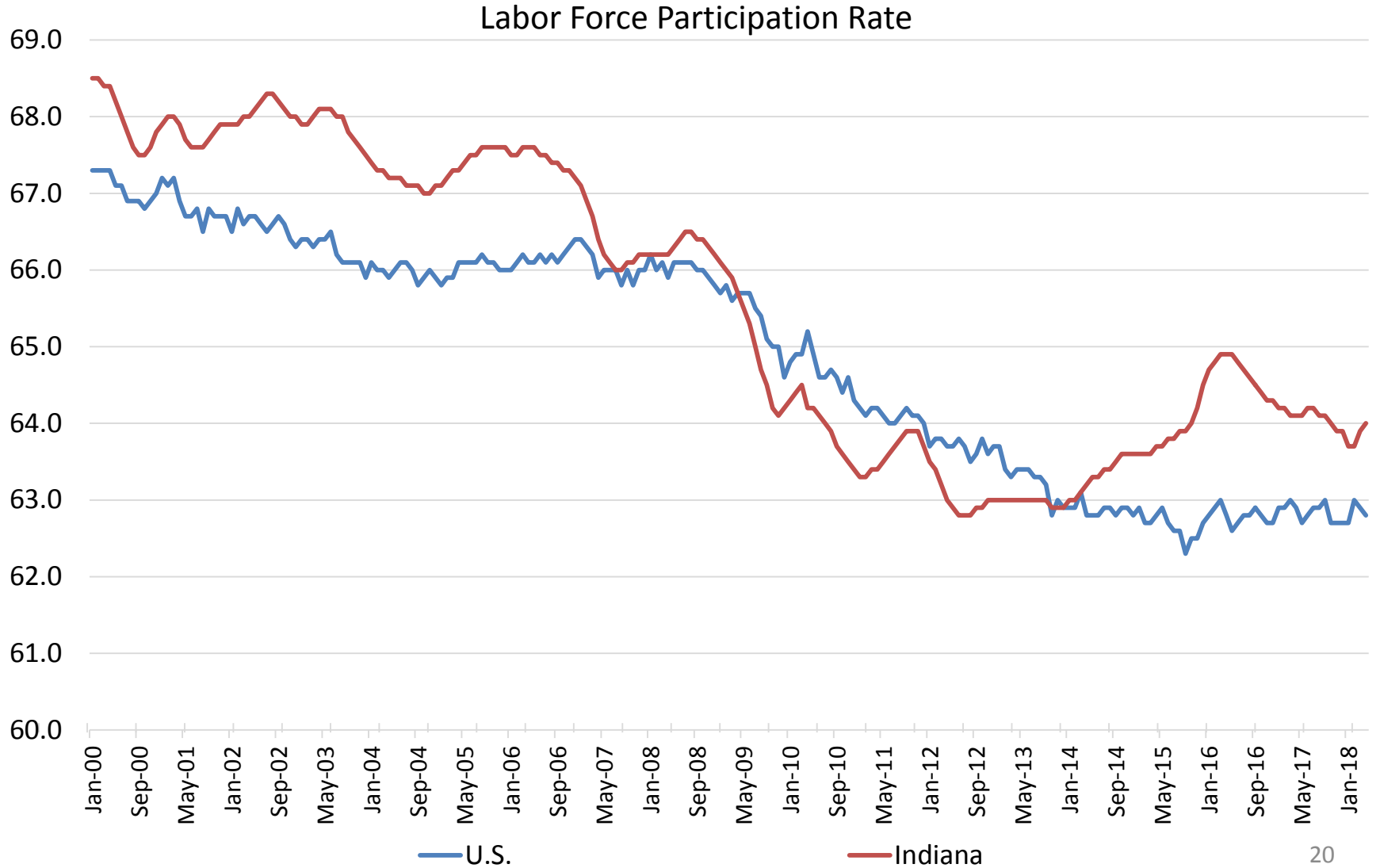
(Numbers in thousands)

	Total	Age			Sex	
		16 to 24 years	25 to 54 years	55 years and over	Men	Women
	Indiana					
Total not in the labor force	1,849.9	321.0	403.4	1,125.4	752.9	1,097.0
Do not want a job now	1,747.4	288.0	370.4	1,089.0	702.5	1,045.0
Want a job	102.5	33.0	33.1	36.4	50.4	52.0
Did not search for work in previous year	70.0	18.5	21.1	30.4	34.4	35.6
Searched for work in previous year	32.4	14.5	12.0	5.9	16.0	16.5
Not available to work now	6.6	3.1	2.5	1.0	2.1	4.5
Available to work now	25.8	11.4	9.5	5.0	13.9	11.9
Reason not currently looking:						
Discouragement over job prospects	9.4	2.7	4.3	2.5	6.9	2.5
Reasons other than discouragement	16.4	8.7	5.2	2.5	6.9	9.5

- Data not available



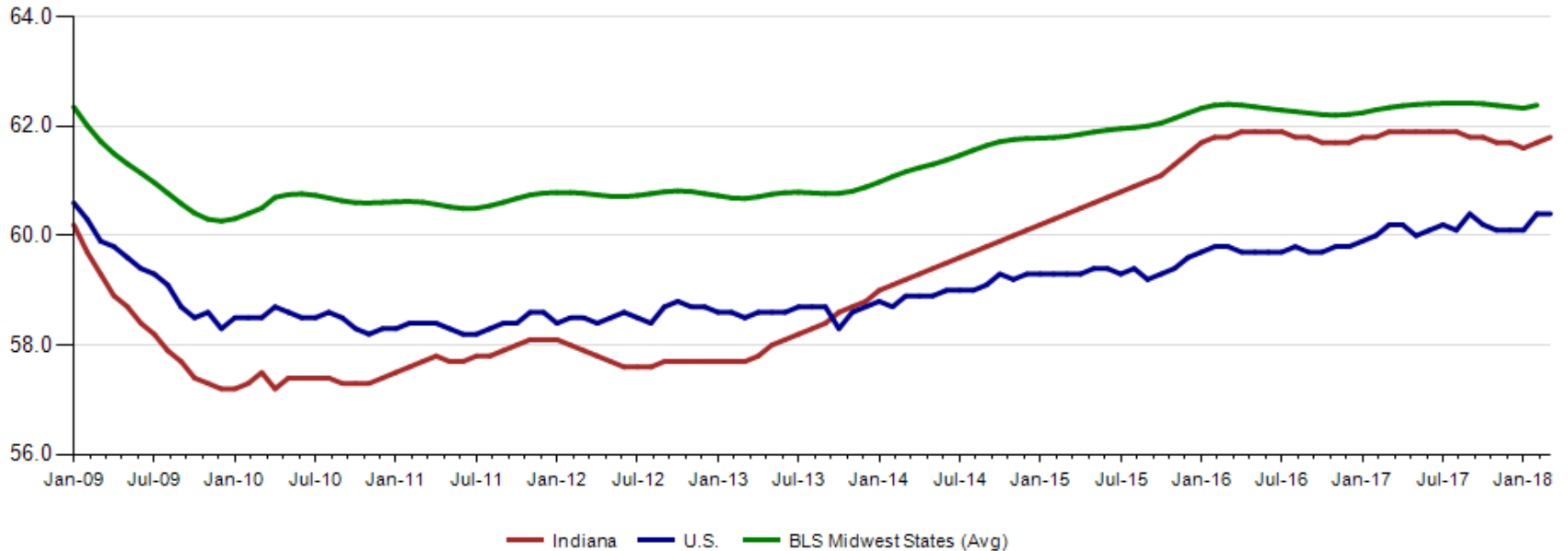
The April Indiana labor force participation rate is at **64.0%** and the **U.S.** rate is at **62.8%**.





Indiana's employment to population rate for April 2018 is 62.0%. The March U.S. employment to population rate is 60.3%. The BLS Midwest Regional states rate is 62.5% (March 2018).

Employment to Population Ratio (seasonally adjusted)





Midwest Comparison Rates: Seasonally
Adjusted Over the Year and Over the
Month (**confidential and preliminary**)

	April 2017	March 2018	April 2018	Monthly change	Yearly change
Indiana	3.5%	3.2%	3.2%	0.0%	-0.3%
U.S.	4.4%	4.1%	3.9%	-0.2%	-0.5%
Illinois	4.9%	4.6%	4.4%	-0.2%	-0.5%
Kentucky	5.2%	4.0%	4.0%	0.0%	-1.2%
Michigan	4.4%	4.7%	4.7%	0.0%	0.3%
Minnesota	3.5%	3.2%	3.2%	0.0%	-0.3%
Ohio	5.1%	4.4%	4.3%	-0.1%	-0.8%
Wisconsin	3.3%	2.9%	2.8%	-0.1%	-0.5%

*2017 Benchmark

Confidential & Deliberative



Alternative Measures of Labor Underutilization Second Quarter of 2017 through First Quarter of 2018 Averages

State	U-1	U-2	U-3	U-4	U-5	U-6
ILLINOIS	2.1	2.7	4.7	5.1	5.7	9.2
INDIANA	0.8	1.7	3.4	3.7	4.2	6.8
KENTUCKY	1.6	2.3	4.8	5.0	5.5	8.1
MICHIGAN	1.5	2.1	4.5	4.8	5.4	9.0
OHIO	1.6	2.2	4.7	4.9	5.5	8.7
UNITED STATES	1.6	2.1	4.2	4.5	5.1	8.3

The six state measures are based on the same definitions as those published for the U.S.:

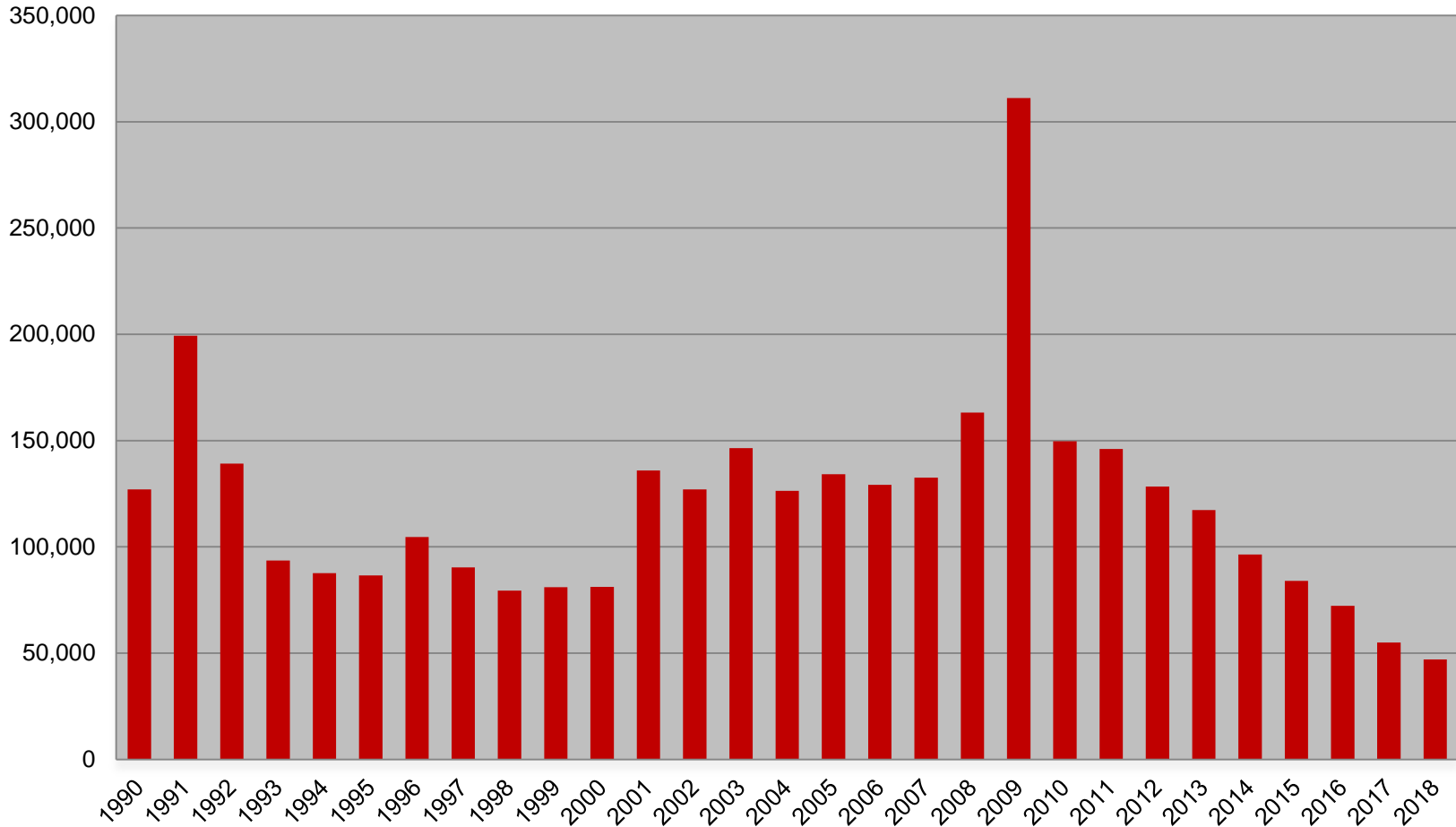
- U-1, persons unemployed 15 weeks or longer, as a percent of the civilian labor force;
- U-2, job losers and persons who completed temporary jobs, as a percent of the civilian labor force;
- U-3, total unemployed, as a percent of the civilian labor force (this is the definition used for the official unemployment rate);
- U-4, total unemployed plus discouraged workers, as a percent of the civilian labor force plus discouraged workers;
- U-5, total unemployed, plus discouraged workers, plus all other marginally attached workers, as a percent of the civilian labor force plus all marginally attached workers; and
- U-6, total unemployed, plus all marginally attached workers, plus total employed part time for economic reasons, as a percent of the civilian labor force plus all marginally attached workers.

Confidential & Deliberative



Weekly Initial Claims – Week 18

Total aggregated UI claims for the first week of each year as reported to ETA.



Confidential & Deliberative



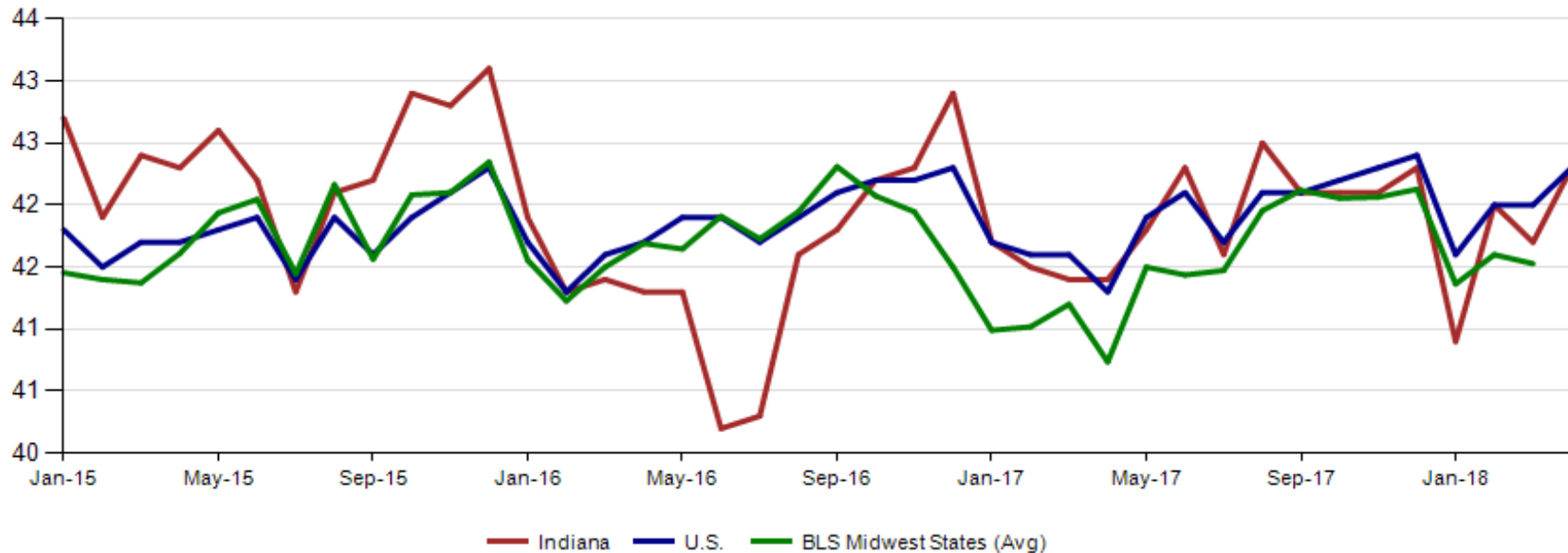
Regular UI Claims – Reference Week (12th of the month) Input to LAUS Unemployment Rate Model Declines over the month - and over the year

Without earnings – Reference week claims

	2009	2010	2011	2012	2013	2014	2015	2016	2017	2018	OTM Change	OTY Change
JANUARY	150,888	105,910	84,706	71,042	63,223	49,377	41,333	36,555	33,137	24,968	7,623	(8,169)
FEBRUARY	154,388	103,432	80,852	69,570	60,183	52,316	39,282	36,909	32,463	25,879	911	(6,584)
MARCH	157,257	93,469	71,696	60,752	54,578	45,928	35,755	32,439	32,141	21,171	(4,708)	(10,970)
APRIL	143,842	74,481	59,036	51,652	48,548	39,717	25,597	23,895	21,998	17,465	(3,706)	(4,533)
MAY	141,174	66,779	54,680	46,328	42,997	32,460	22,807	22,300	19,431			
JUNE	136,670	67,996	55,021	46,820	41,722	29,524	22,030	22,025	16,722			
JULY	121,336	69,447	58,031	47,268	44,597	30,845	22,341	22,326	15,775			
AUGUST	103,509	62,976	51,710	42,134	39,998	26,061	21,472	20,737	15,692			
SEPTEMBER	92,680	58,280	46,824	41,955	39,563	23,685	20,941	19,372	14,334			
OCTOBER	86,275	58,317	46,909	39,467	37,778	23,768	19,917	19,143	14,266			
NOVEMBER	82,451	58,846	51,201	41,018	38,517	25,315	21,199	19,547	14,347			
DECEMBER	91,814	65,279	55,104	46,371	42,484	30,982	26,249	24,599	17,345			

April 2018 average weekly hours for Indiana manufacturing production increased by .6 hours to 42.3. National manufacturing weekly hours are even with Indiana manufacturing weekly hours at 42.3. BLS Region states were at 41.5 hours (March 2018 data).

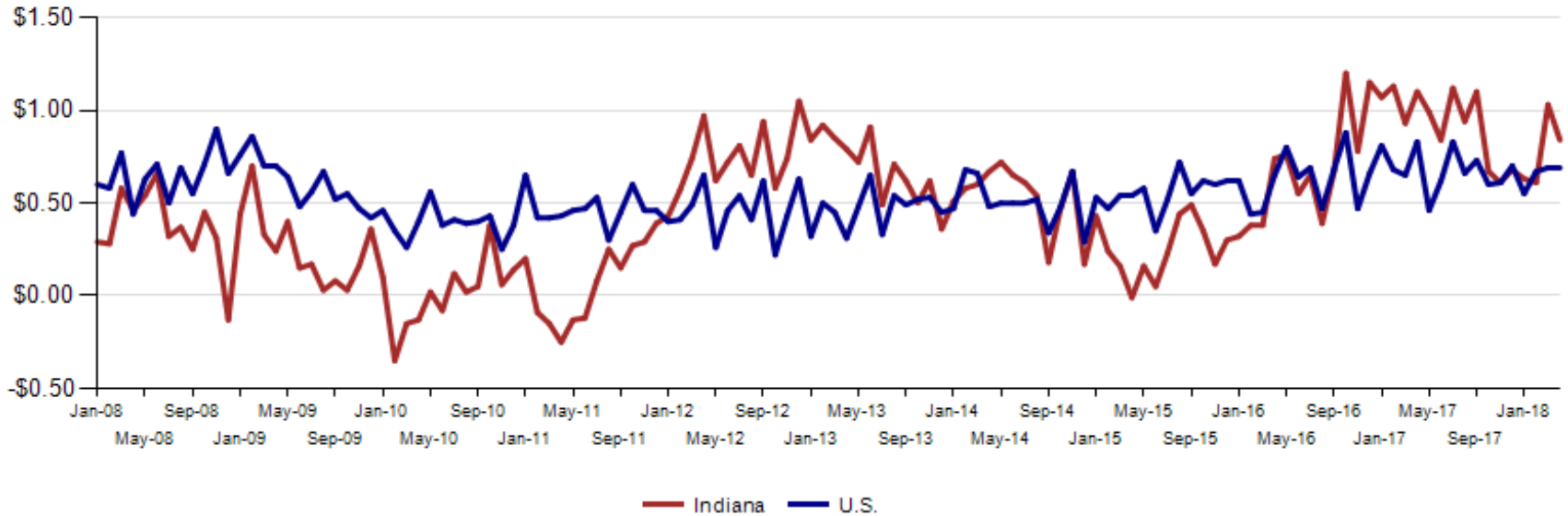
Avg. Weekly Manufacturing Production Hours (non seasonally adjusted)





Average Hourly Wage Year to Year Change

**Average Hourly Earnings (non seasonally adjusted)
Total Private, All Employees - Year to Year Change**

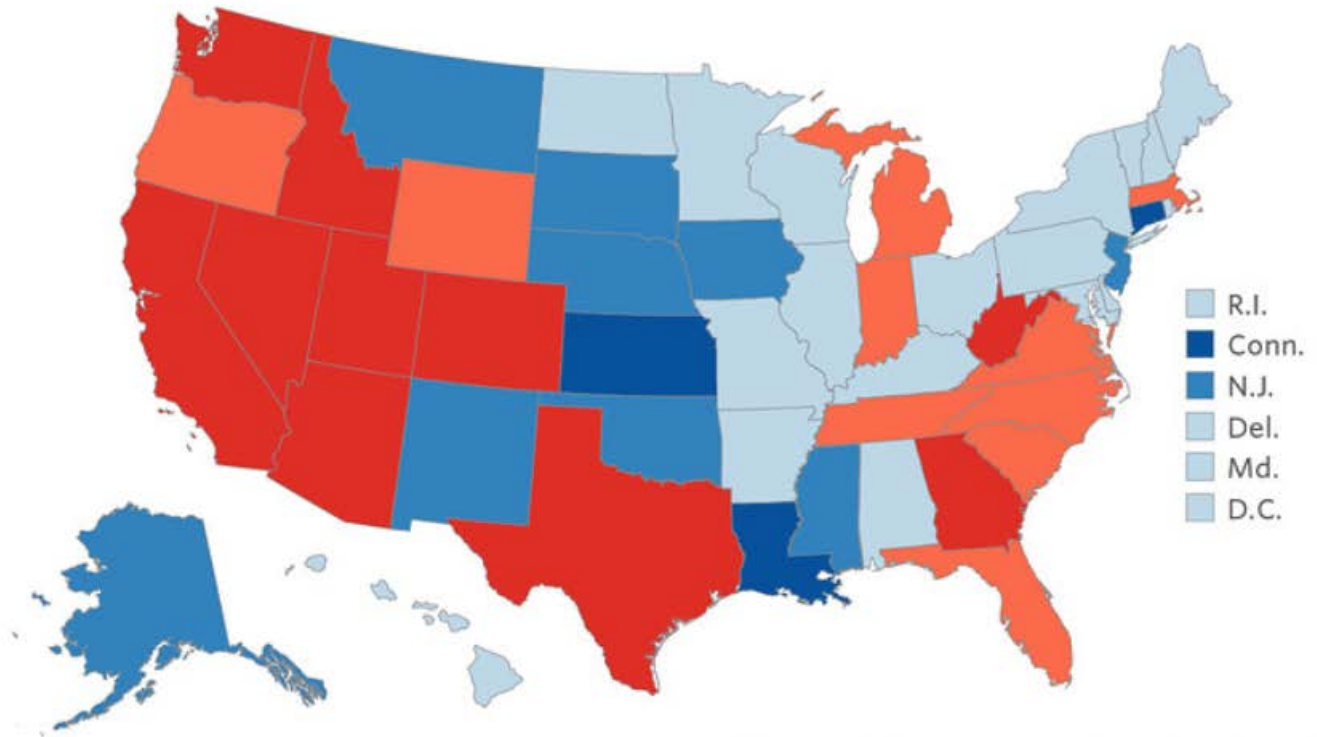


*Indiana April Average Hourly Wage \$25.39/ U.S. \$27.11



State GDP growth in 2017

■ 2.6%-4.4% ■ 2%-2.6% ■ 1%-2% ■ 0%-1% ■ Negative



Source: U.S. Bureau of Economic Analysis



Indiana Counties Population Change 2007-2017

