



December 2025 Labor Market Review

Reported by: Jillian Gregory

Regional Workforce Analyst

[Email Jillian](#)

jgregory@dwd.in.gov

Economic Growth Region 9

Statistical Data Report for December 2025, Released February 2026

State Employment and Unemployment

Unemployment rates were higher in December in 6 states and stable in 44 states and the District of Columbia, the U.S. Bureau of Labor Statistics reported. Twenty-one states and the District had jobless rate increases from a year earlier, 8 states had decreases, and 21 states had little change. The national unemployment rate, 4.4 percent, changed little over the month but was 0.3 percentage point higher than in December 2024.

In December 2025, nonfarm payroll employment was essentially unchanged in all 50 states and the District of Columbia. Over the year, nonfarm payroll employment increased in 8 states, decreased in the District, and was essentially unchanged in 42 states.

Hawaii and South Dakota had the lowest jobless rates in December, 2.2 percent each. The District of Columbia had the highest unemployment rate, 6.7 percent. The next highest rates were in California and New Jersey, 5.5 percent and 5.4 percent, respectively. In total, 19 states had unemployment rates lower than the U.S. figure of 4.4 percent, 5 states and the District had higher rates, and 26 states had rates that were not appreciably different from that of the nation.



Economic Growth Region (EGR) 9

Bartholomew, Dearborn, Decatur, Franklin, Jackson, Jefferson, Jennings, Ohio, Ripley, and Switzerland Counties

December 2025 Labor Force Estimates (not seasonally adjusted)						
Area	Labor Force	Employed	Unemployed	Dec-25	Nov-25	Dec-24
U.S.	170,723,000	163,720,000	7,003,000	4.1%	4.3%	3.8%
IN	3,455,706	3,363,377	92,329	2.7%	3.3%	4.0%
EGR 9	165,978	161,858	4,120	2.5%	3.1%	3.8%
Columbus MSA	39,959	38,923	1,036	2.6%	3.1%	3.9%
Bartholomew Co.	39,959	38,923	1,036	2.6%	3.1%	3.9%
Dearborn Co.	26,606	26,026	580	2.2%	3.1%	3.7%
Decatur Co.	13,164	12,824	340	2.6%	3.2%	3.7%
Franklin Co.	11,719	11,462	257	2.2%	2.9%	3.7%
Jackson Co.	22,979	22,437	542	2.4%	3.0%	3.2%
Jefferson Co.	15,293	14,900	393	2.6%	3.4%	3.8%
Jennings Co.	14,836	14,380	456	3.1%	3.1%	4.3%
Ohio Co.	2,953	2,883	70	2.4%	3.3%	3.2%
Ripley Co.	14,524	14,191	333	2.3%	3.0%	3.6%
Switzerland Co.	3,945	3,832	113	2.9%	3.8%	4.7%
Batesville	3,858	3,770	88	2.3%	3.0%	3.1%
Brookville	1,362	1,327	35	2.6%	3.1%	4.2%
Columbus	24,495	23,868	627	2.6%	3.2%	3.9%
Greensburg	6,131	5,972	159	2.6%	3.5%	3.7%
Lawrenceburg	2,576	2,514	62	2.4%	3.1%	4.9%
Madison	5,576	5,460	116	2.1%	3.4%	3.7%
North Vernon	3,067	2,964	103	3.4%	3.4%	5.3%
Seymour	10,317	10,078	239	2.3%	3.1%	3.3%

Source: Indiana Department of Workforce Development, Research & Analysis, Local Area Unemployment Statistics | Unemployment Statistics Released: 03/26 | Notes: The data displayed are presented as estimates only. The most recent month's data are always preliminary and are revised when the next month's data are released.

Scott County moved out of Louisville KY MSA into Statewide employment

Unemployment Rates by State (seasonally adjusted): December 2025

U.S. - 4.4%

Illinois - 4.6%

Indiana - 3.5%

Kentucky - 4.5%

Michigan - 5%

Ohio - 4.5%

Source: U.S. Department of Labor, Bureau of Labor Statistics

Unemployment Rank by County (of 92 counties): December 2025

#13 - Jennings (3.1%)

#23 - Switzerland (2.9%)

#38 - Bartholomew (2.6%)

#40 - Decatur (2.6%)

#42 - Jefferson (2.6%)

#65 - Jackson (2.4%)

#66 - Ohio (2.4%)

#77 - Ripley (2.3%)

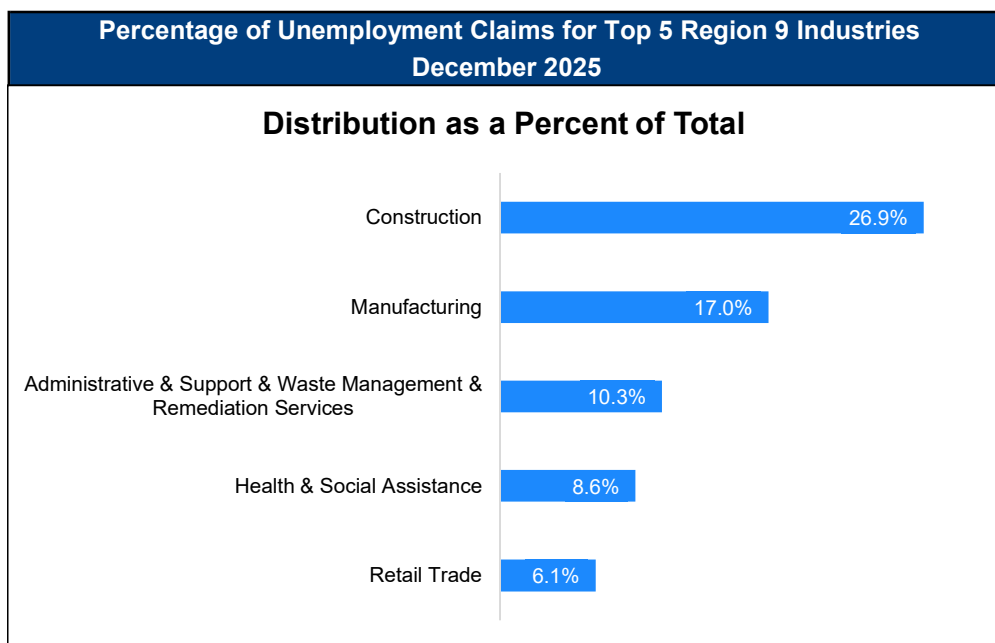
#79 - Dearborn (2.2%)

#80 - Franklin (2.2%)

Source: Indiana Department of Workforce Development, Research and Development, Local Area Unemployment Statistics

Consumer Price Index (CPI-U Change), Unadjusted Percent Change to December 2025 from				
CPI Item	Dec-24	Nov-25	Dec-24	Nov-25
	U.S. City		Midwest Region*	
All Items	2.7%	0.0%	2.7%	-0.1%
Food & Beverages	3.0%	0.6%	2.6%	0.2%
Housing	3.6%	0.3%	4.4%	0.2%
Apparel	0.6%	-1.3%	2.6%	-0.5%
Transportation	0.4%	-1.5%	-1.4%	-1.6%
Medical Care	3.2%	0.3%	2.7%	0.4%
Recreation	3.0%	1.2%	4.4%	1.1%
Education & Communication	0.5%	-1.0%	0.7%	-1.0%
Other Goods & Services	4.2%	-0.1%	3.2%	-0.4%

*Midwest region = Midwest Urban Average. Midwest Region includes Illinois, Indiana, Iowa, Kansas, Michigan, Minnesota, Missouri, Nebraska, North Dakota, Ohio, South Dakota and Wisconsin | Source: U.S. Bureau of Labor Statistics



Source: Indiana Department of Workforce Development, Research and Analysis

WARN Notices

WARN Notices for Region 9 for December 2025				
Company	City	County	# of workers affected	Notice Date

There are no WARN Notices for December 2025 for EGR 9.

Source: Indiana Department of Workforce Development, WARN Notices | For information on WARN Act requirements, you may go to the U.S. Department of Labor Employment Training Administration Fact Sheet:

<https://www.doleta.gov/programs/factsht/warn.htm>

Unemployment Claims: December 2025

Region 9

Initial Claims

12/06/25 - 148(D)

12/13/25 - 171(D)

12/20/25 - 132(D)

12/27/25 - 92(D)

Continued Claims

12/06/25 - 686

12/13/25 - 709

12/20/25 - 760

12/27/25 - 802

Total Claims

12/06/25 - 834

12/13/25 - 880

12/20/25 - 892

12/27/25 - 894

State of Indiana

Initial Claims

12/06/25 - 4,729

12/13/25 - 3,953

12/20/25 - 3,445

12/27/25 - 3,479

Continued Claims

12/06/25 - 21,725

12/13/25 - 22,174

12/20/25 - 22,299

12/27/25 - 25,414

Total Claims

12/06/25 - 26,454

12/13/25 - 26,127

12/20/25 - 25,744

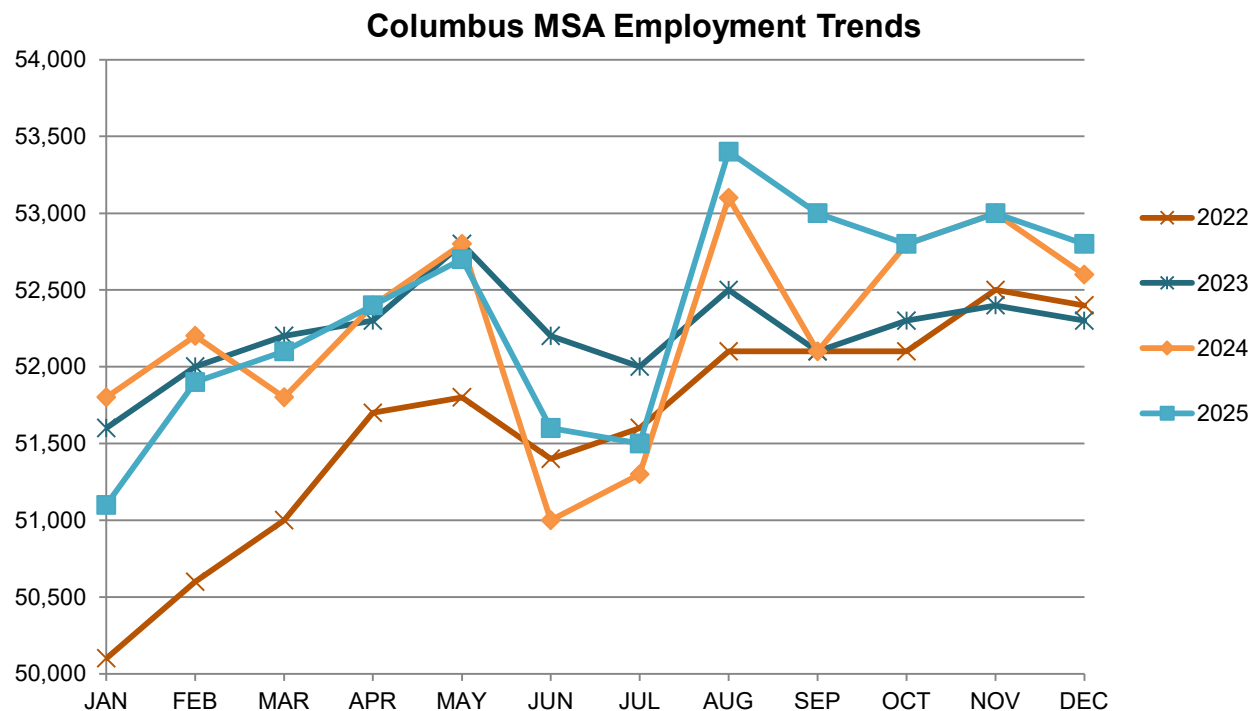
12/27/25 - 28,893

(D) indicates item is affected by non-disclosure issues relating to industry or ownership status | *Numbers subject to weekly revision | Source: Indiana Department of Workforce Development, Research and Analysis

Columbus MSA							
Wage and Salaried Employment	December 2025			# Change	% Change	# Change	% Change
Industry	Dec-25	Nov-25	Dec-24	Nov-25 to Dec-25	Dec-24 to Dec-25		
Total Nonfarm	52,800	53,200	52,600	-400	-0.8%	200	0.4%
Total Private	46,400	46,700	46,300	-300	-0.6%	100	0.2%
Goods Producing	21,100	21,200	21,100	-100	-0.5%	0	0.0%
Service-Providing	31,700	32,000	31,500	-300	-0.9%	200	0.6%
Private Service Providing	25,300	25,500	25,200	-200	-0.8%	100	0.4%
Mining, Logging and Construction	1,900	1,900	1,900	0	0.0%	0	0.0%
Manufacturing	19,200	19,300	19,200	-100	-0.5%	0	0.0%
Durable Goods	17,200	17,200	17,000	0	0.0%	200	1.2%
Trade, Transportation, and Utilities	7,900	8,100	8,000	-200	-2.5%	-100	-1.3%
Retail Trade	5,000	5,000	5,100	0	0.0%	-100	-2.0%
Information	200	200	300	0	0.0%	-100	-33.3%
Financial Activities	1,700	1,700	1,800	0	0.0%	-100	-5.6%
Professional and Business Services	5,000	5,000	4,700	0	0.0%	300	6.4%
Education and Health Services	4,900	4,900	4,900	0	0.0%	0	0.0%
Leisure and Hospitality	4,000	4,000	3,900	0	0.0%	100	2.6%
Other Services	1,600	1,600	1,600	0	0.0%	0	0.0%
Total Government	6,400	6,500	6,300	-100	-1.5%	100	1.6%
Federal Government	200	200	200	0	0.0%	0	0.0%
State Government	900	900	800	0	0.0%	100	12.5%
Local Government	5,300	5,400	5,300	-100	-1.9%	0	0.0%
Local Government Educational Services	2,100	2,100	2,100	0	0.0%	0	0.0%

Source: Indiana Dept of Workforce Development, Research and Analysis, Current Employment Statistics

Franklin Co. has been moved into the Cincinnati OH MSA employment



Source: Indiana Department of Workforce Development, Research & Analysis, Current Employment Statistics | Note: Historical data for the most recent 4 years (both seasonally adjusted and not seasonally adjusted) are revised near the beginning of each calendar year, prior to the release of January estimates for statewide data.

Frequently Listed Jobs	
Top 20 job listings by number of postings in Region 9 in the past month	
Rank	Occupations
1	Registered Nurses
2	Retail Salespersons
3	Heavy and Tractor-Trailer Truck Drivers
4	Home Health and Personal Care Aides
5	First-Line Supervisors of Retail Sales Workers
6	Production Workers, All Other
7	Merchandise Displayers and Window Trimmers
8	Customer Service Representatives
9	Maintenance and Repair Workers, General
10	Licensed Practical and Licensed Vocational Nurses
11	Physical Therapists
12	Food Service Managers
13	Nursing Assistants
14	Food Preparation Workers
15	Laborers and Freight, Stock, and Material Movers, Hand
16	Janitors and Cleaners, Except Maids and Housekeeping Cleaners
17	Fast Food and Counter Workers
18	Radiologic Technologists and Technicians
19	Medical and Health Services Managers
20	Sales Representatives of Services, Except Advertising, Insurance, Financial Services, and Travel

Source: Lightcast

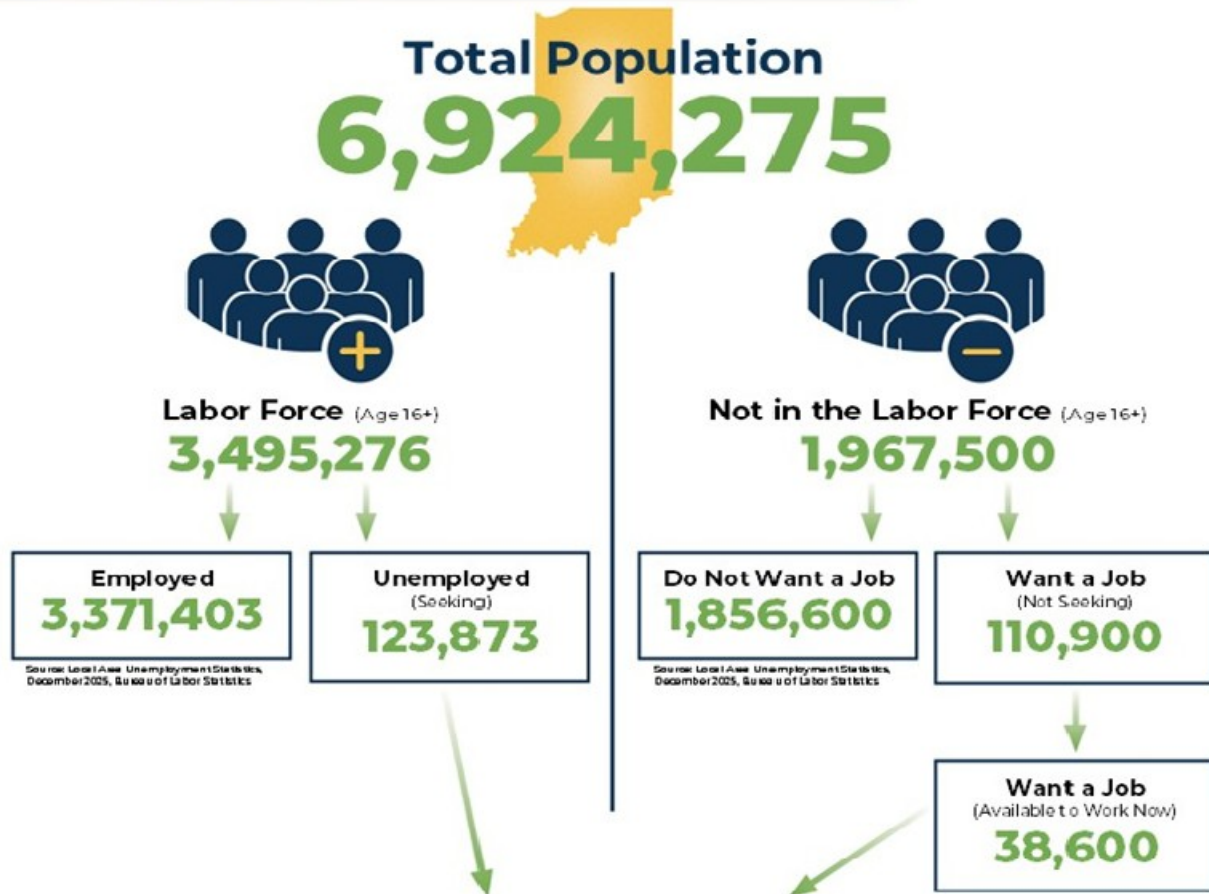
Applicant Pool	
Top 20 occupations desired by applicants on their resumes in the past 12 months	
Occupations	# of Applicants
Production Workers, All Other	565
Assemblers and Fabricators, All Other	377
Helpers--Production Workers	249
Customer Service Representatives	220
Laborers and Freight, Stock, and Material Movers, Hand	178
Heavy and Tractor-Trailer Truck Drivers	168
Cashiers	159
Office Clerks, General	150
Industrial Truck and Tractor Operators	136
Managers, All Other	125
Construction Laborers	123
Office and Administrative Support Workers, All Other	117
Extraction Workers, All Other	116
First-Line Supervisors of Production and Operating Workers	109
Retail Salespersons	105
Secretaries and Administrative Assistants, Except Legal, Medical, and Executive	100
Team Assemblers	98
Welders, Cutters, Solderers, and Brazers	90
Construction and Related Workers, All Other	87
Carpenters	83

Source: Indiana Workforce Development, Indiana Career Connect

BREAKDOWN

December Indiana Labor Force

Released January 27, 2026



Potential Workers

(Unemployed and Seeking a Job + Not in the Labor Force but Want a Job/Available to Work Now)

162,473

More about the U.S. Bureau of Labor Statistics data sources used within:
Local Area Unemployment Statistics (LAUS): Captures Indiana's labor force which includes those currently employed and those who are unemployed and actively seeking work.
Current Population Survey (CPS): Captures individuals not participating in Indiana's Labor Force. This set includes non-participants that do not want a job (i.e. retirees and students) and those that want a job but are not actively seeking work.
U.S. Census Bureau, Indiana Population 2024.

Resource Notes on Using Current Population Survey (CPS) Subnational Data and Differences Between CPS and LAUS Estimates



INDIANA DEPARTMENT OF
WORKFORCE
DEVELOPMENT

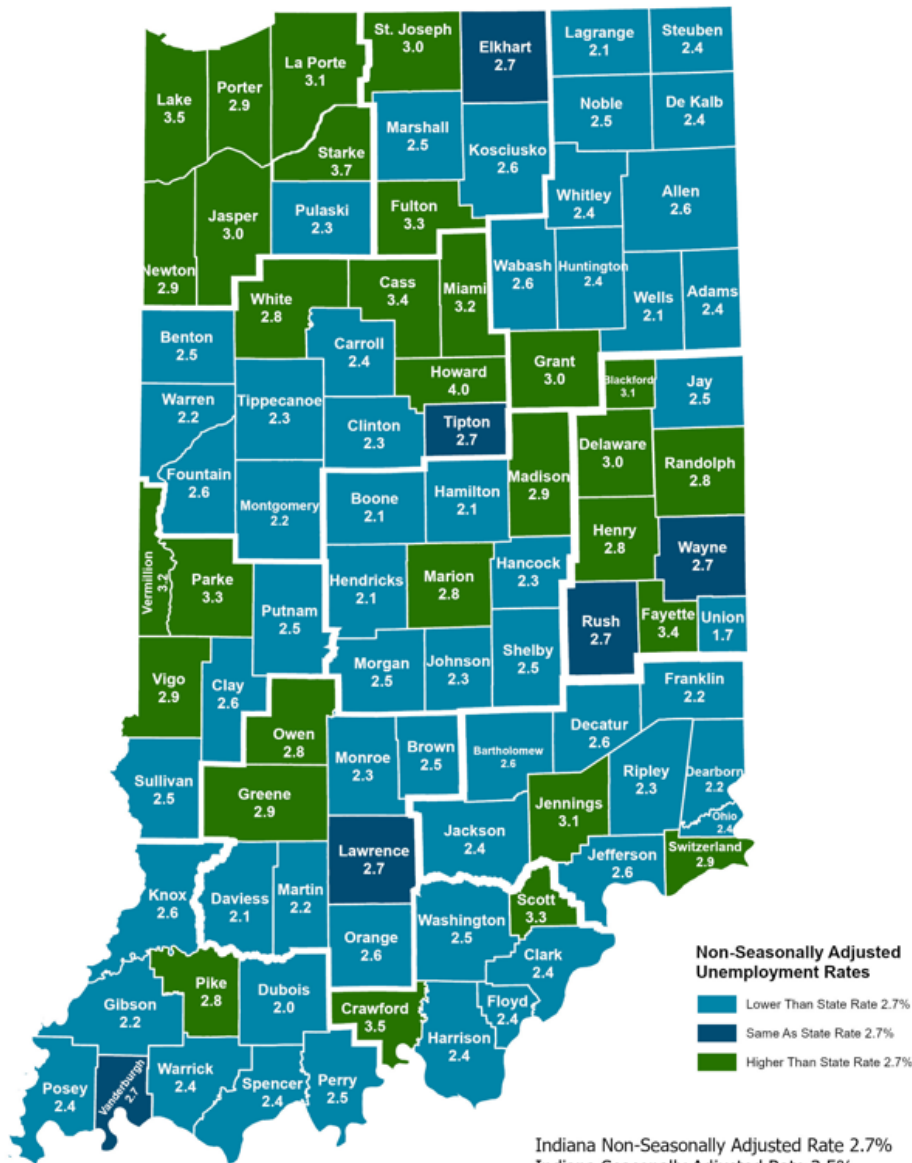
County Unemployment Rates December 2025

Questions?

Please contact the DWD
Research and Analysis
Regional Labor Analyst
listed below:

Jillian A. Gregory
Regional Labor Analyst

[Indiana Department of
Workforce Development](https://www.in.gov/dwd/)
jgregory@dwd.in.gov



Non-Seasonally Adjusted Unemployment Rates

- Lower Than State Rate 2.7%
- Same As State Rate 2.7%
- Higher Than State Rate 2.7%

Indiana Non-Seasonally Adjusted Rate 2.7%
Indiana Seasonally Adjusted Rate 3.5%
Source: DWD, Local Area Unemployment Statistics