



# HOOSIERS BY THE NUMBERS

Your premier source for labor market information for Indiana.

**DWD**

INDIANA DEPARTMENT OF  
**WORKFORCE**  
DEVELOPMENT

## LABOR MARKET REVIEW



## May 2025 Labor Market Review

**Reported by: Kathy Jaworski**

Regional Workforce Analyst

[Email Kathy](#)

[kjaworski@dwd.in.gov](mailto:kjaworski@dwd.in.gov)

Tel: 219-841-6347

**DWD**

INDIANA DEPARTMENT OF  
**WORKFORCE**  
DEVELOPMENT

## Economic Growth Region 2

Statistical Data Report for May 2025, Released July 2025

### State Employment and Unemployment

Unemployment rates were higher in May in 3 states, lower in 2 states, and stable in 45 states and the District of Columbia, the U.S. Bureau of Labor Statistics reported. In May, three states had unemployment rate increases: Massachusetts (+0.2 percentage point) and Iowa and Virginia (+0.1 point each). Two states had rate decreases: Indiana and New York (-0.2 percentage point each).

Twenty-four states and the District had jobless rate increases from a year earlier, 4 states had decreases, and 22 states had little change. Twenty-four states and the District of Columbia had unemployment rate increases from May 2024, the largest of which was in Mississippi (+1.2 percentage points). Four states had over-the-year rate decreases, the largest of which was in Indiana (-0.4 percentage point), followed by Illinois, New York, and West Virginia (-0.3 point each).

The national unemployment rate was unchanged at 4.2 percent but was 0.2 percentage point higher than in May 2024.

In May 2025, nonfarm payroll employment was essentially unchanged in all 50 states and the District of Columbia. Over the year, nonfarm payroll employment increased in 18 states and was essentially unchanged in 32 states and the District.



### Economic Growth Region (EGR) 2

Elkhart, Fulton,  
Kosciusko, Marshall  
and St. Joseph  
Counties

### Unemployment Rates by State (seasonally adjusted): May 2025

**U.S. - 4.2%**

Illinois - 4.8%

**Indiana - 3.7%**

Kentucky - 5%

Michigan - 5.4%

Ohio - 4.9%

Source: U.S. Department of Labor, Bureau of Labor Statistics

### Unemployment Rank by County (of 92 counties): May 2025

#16 - St. Joseph (3.7%)

#17 - Elkhart (3.6%)

#23 - Fulton (3.5%)

#42 - Kosciusko (3.3%)

#50 - Marshall (3.2%)

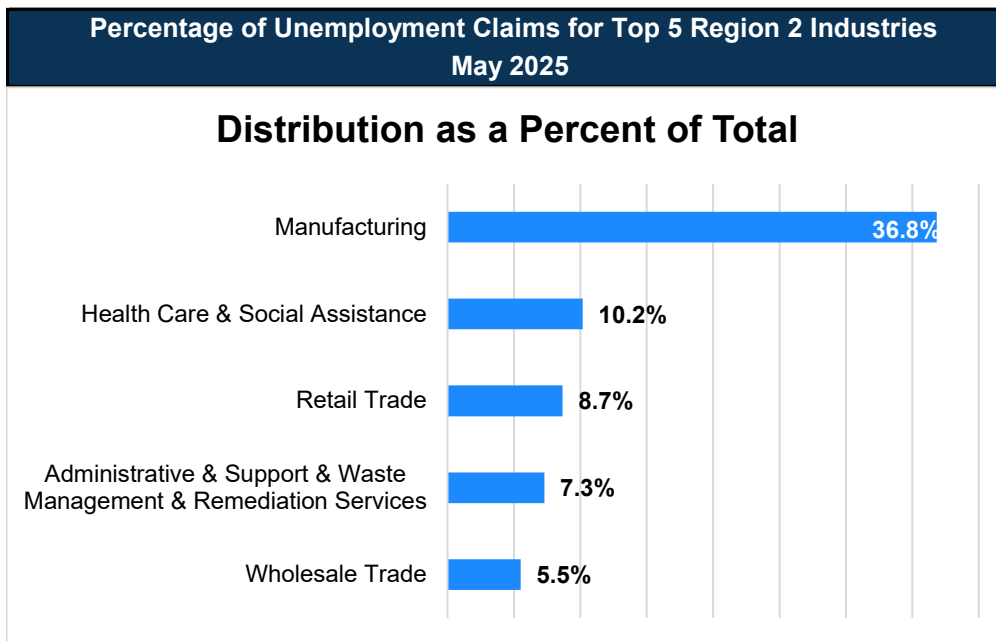
Source: Indiana Department of Workforce Development, Research and Development, Local Area Unemployment Statistics

May 2025 Labor Force Estimates (not seasonally adjusted)						
Area	Labor Force	Employed	Unemployed	May-25	Apr-25	May-24
U.S.	170,216,000	163,401,000	6,815,000	4.0%	3.9%	3.7%
IN	3,496,249	3,377,094	119,155	3.4%	3.0%	4.0%
EGR 2	304,415	293,540	10,875	3.6%	3.1%	4.5%
Elkhart-Goshen MSA	99,139	95,579	3,560	3.6%	3.1%	4.7%
South Bend-Mishawaka MSA	157,330	150,995	6,335	4.0%	3.5%	4.7%
Elkhart Co.	99,139	95,579	3,560	3.6%	3.1%	4.7%
Fulton Co.	9,657	9,323	334	3.5%	3.2%	4.2%
Kosciusko Co.	40,293	38,949	1,344	3.3%	2.9%	4.2%
Marshall Co.	23,188	22,450	738	3.2%	2.8%	4.1%
St Joseph Co.	132,138	127,239	4,899	3.7%	3.3%	4.6%
Elkhart	25,179	24,125	1,054	4.2%	3.7%	5.2%
Goshen	15,368	14,817	551	3.6%	3.1%	4.6%
Mishawaka	25,318	24,353	965	3.8%	3.5%	4.8%
Plymouth	5,700	5,522	178	3.1%	2.7%	3.8%
South Bend	48,212	46,300	1,912	4.0%	3.6%	4.8%
Warsaw	8,120	7,832	288	3.5%	3.4%	4.4%

Source: Indiana Department of Workforce Development, Research & Analysis, Local Area Unemployment Statistics | Unemployment Statistics Released:06/25 | Notes: The data displayed are presented as estimates only. The most recent month's data are always preliminary and are revised when the next month's data are released.

Consumer Price Index (CPI-U Change), Unadjusted Percent Change to May 2025 from				
CPI Item	May-24	Apr-25	May-24	Apr-25
	U.S. City		Midwest Region*	
All Items	2.4%	0.2%	2.4%	0.2%
Food & Beverages	2.8%	0.2%	2.5%	0.3%
Housing	4.0%	0.3%	4.5%	0.4%
Apparel	-0.9%	-1.0%	-1.0%	-0.4%
Transportation	-1.3%	0.2%	-1.5%	0.0%
Medical Care	2.5%	0.2%	1.8%	0.3%
Recreation	1.8%	0.0%	2.6%	0.2%
Education & Communication	0.3%	0.0%	0.5%	-0.2%
Other Goods & Services	3.8%	0.3%	3.4%	-0.1%

\*Midwest region = Midwest Urban Average. Midwest Region includes Illinois, Indiana, Iowa, Kansas, Michigan, Minnesota, Missouri, Nebraska, North Dakota, Ohio, South Dakota and Wisconsin | Source: U.S. Bureau of Labor Statistics



Source: Indiana Department of Workforce Development, Research and Analysis

## WARN Notices

WARN Notices for Region 2 for May 2025				
Company	City	County	# affected	Notice Date

**There are no WARN Notices for May 2025 for Region 2.**

Source: Indiana Department of Workforce Development, WARN Notices | For information on WARN Act requirements, you may go to the U.S. Department of Labor Employment Training Administration Fact Sheet:

<https://www.doleta.gov/programs/factsht/warn.htm>

## Unemployment Claims: May 2025

### Region 2

#### Initial Claims

05/03/25 - 236(D)  
05/10/25 - 239(D)  
05/17/25 - 228(D)  
05/24/25 - 233(D)  
05/31/25 - 258(D)

#### Continued Claims

05/03/25 - 1,549  
05/10/25 - 1,472  
05/17/25 - 1,474  
05/24/25 - 1,410  
05/31/25 - 1,783

#### Total Claims

05/03/25 - 1,785  
05/10/25 - 1,711  
05/17/25 - 1,702  
05/24/25 - 1,643  
05/31/25 - 2,041

### State of Indiana

#### Initial Claims

05/03/25 - 2,749  
05/10/25 - 2,564  
05/17/25 - 2,512  
05/24/25 - 2,504  
05/31/25 - 2,504

#### Continued Claims

05/03/25 - 21,137  
05/10/25 - 20,537  
05/17/25 - 20,644  
05/24/25 - 20,243  
05/31/25 - 21,697

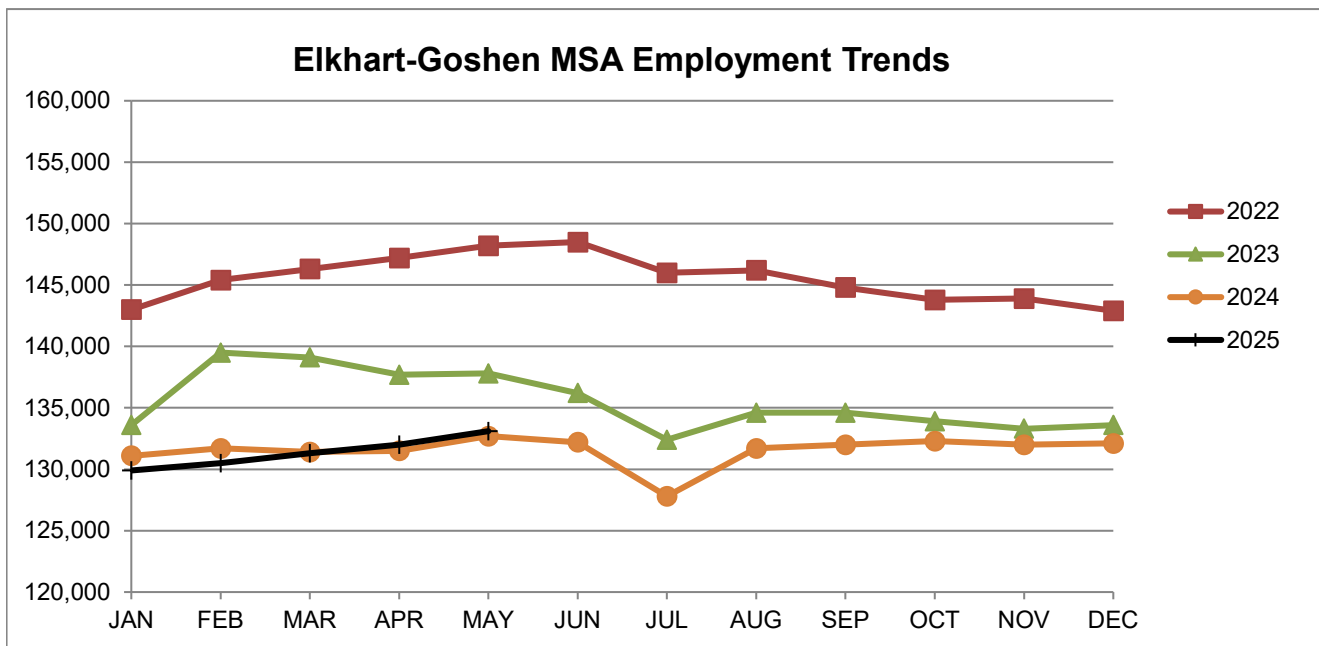
#### Total Claims

05/03/25 - 23,886  
05/10/25 - 23,101  
05/17/25 - 23,156  
05/24/25 - 22,747  
05/31/25 - 24,201

Notes: (D) Indicates one or more counties are excluded due to non-disclosure issues | Numbers subject to weekly revision | Source: Indiana Department of Workforce Development, Research and Analysis

Elkhart-Goshen MSA						
Wage and Salaried Employment	May 2025			# Change	% Change	# Change % Change
Industry	May-25	Apr-25	May-24	Apr-25 to May-25	May-24 to May-25	
<b>Total Nonfarm</b>	<b>133,100</b>	<b>132,000</b>	<b>132,700</b>	<b>1,100</b>	<b>0.8%</b>	<b>400</b> <b>0.3%</b>
<b>Total Private</b>	<b>124,000</b>	<b>123,000</b>	<b>123,500</b>	<b>1,000</b>	<b>0.8%</b>	<b>500</b> <b>0.4%</b>
Goods Producing	65,600	65,200	65,600	400	0.6%	0 0.0%
Service-Providing	67,500	66,800	67,100	700	1.1%	400 0.6%
Private Service Providing	58,400	57,800	57,900	600	1.0%	500 0.9%
Mining, Logging and Construction	4,600	4,500	4,400	100	2.2%	200 4.6%
Manufacturing	61,000	60,700	61,200	300	0.5%	-200 -0.3%
Durable Goods	51,800	51,600	52,200	200	0.4%	-400 -0.8%
Transportation Equipment Manufacturing	32,500	32,500	33,200	0	0.0%	-700 -2.1%
Motor Vehicle Body and Trailer Manufacturing	28,000	28,000	28,500	0	0.0%	-500 -1.8%
Trade, Transportation, and Utilities	20,300	20,200	20,400	100	0.5%	-100 -0.5%
Wholesale Trade	8,000	7,900	7,800	100	1.3%	200 2.6%
Retail Trade	9,700	9,700	9,800	0	0.0%	-100 -1.0%
Transportation, Warehousing, and Utilities	2,600	2,600	2,800	0	0.0%	-200 -7.1%
Information	600	600	500	0	0.0%	100 20.0%
Financial Activities	3,200	3,200	3,200	0	0.0%	0 0.0%
Professional and Business Services	10,100	9,900	9,800	200	2.0%	300 3.1%
Education and Health Services	12,300	12,300	12,000	0	0.0%	300 2.5%
Leisure and Hospitality	7,500	7,200	7,700	300	4.2%	-200 -2.6%
Other Services	4,400	4,400	4,300	0	0.0%	100 2.3%
<b>Government</b>	<b>9,100</b>	<b>9,000</b>	<b>9,200</b>	<b>100</b>	<b>1.1%</b>	<b>-100</b> <b>-1.1%</b>
Federal Government	200	300	300	-100	-33.3%	-100 -33.3%
State Government	300	300	300	0	0.0%	0 0.0%
Local Government	8,600	8,400	8,600	200	2.4%	0 0.0%
Local Government Educational Services	5,800	5,600	5,700	200	3.6%	100 1.8%

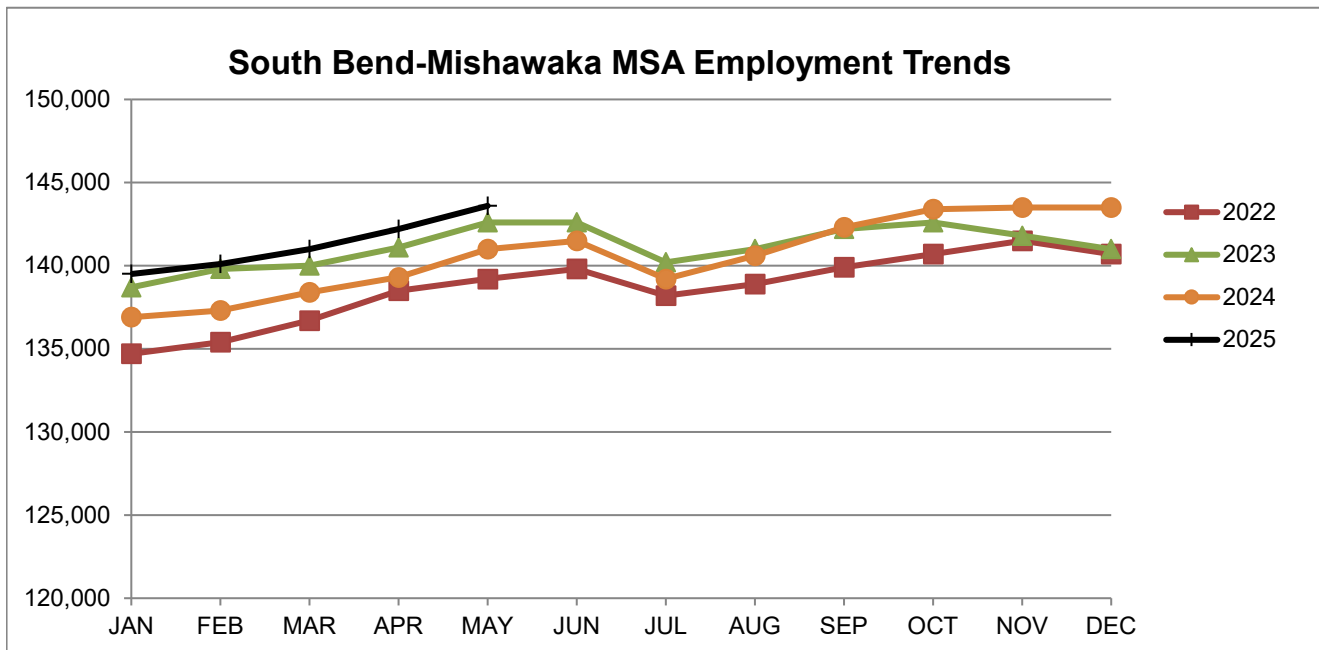
Source: Indiana Dept of Workforce Development, Research and Analysis, Current Employment Statistics



Source: Indiana Department of Workforce Development, Research & Analysis, Current Employment Statistics | Note: Historical data for the most recent 4 years (both seasonally adjusted and not seasonally adjusted) are revised near the beginning of each calendar year, prior to the release of January estimates for statewide data.

South Bend-Mishawaka MSA							
Wage and Salaried Employment	May 2025			# Change	% Change	# Change	% Change
Industry	May-25	Apr-25	May-24	Apr-25 to May-25		May-24 to May-25	
<b>Total Nonfarm</b>	<b>143,600</b>	<b>142,200</b>	<b>141,000</b>	<b>1,400</b>	<b>1.0%</b>	<b>2,600</b>	<b>1.8%</b>
<b>Total Private</b>	<b>128,600</b>	<b>127,200</b>	<b>125,700</b>	<b>1,400</b>	<b>1.1%</b>	<b>2,900</b>	<b>2.3%</b>
Goods Producing	22,000	21,800	21,400	200	0.9%	600	2.8%
Service Providing	121,600	120,400	119,600	1,200	1.0%	2,000	1.7%
Private Service Providing	106,600	105,400	104,300	1,200	1.1%	2,300	2.2%
Mining, Logging and Construction	6,700	6,500	6,200	200	3.1%	500	8.1%
Manufacturing	15,300	15,300	15,200	0	0.0%	100	0.7%
Trade, Transportation and Utilities	25,800	25,500	25,600	300	1.2%	200	0.8%
Wholesale Trade	7,100	7,000	6,700	100	1.4%	400	6.0%
Retail Trade	14,100	14,000	14,300	100	0.7%	-200	-1.4%
General Merchandise Stores	3,400	3,300	3,400	100	3.0%	0	0.0%
Transportation, Warehousing and Utilities	4,600	4,500	4,600	100	2.2%	0	0.0%
Information	1,400	1,400	1,400	0	0.0%	0	0.0%
Financial Activities	5,900	5,800	6,000	100	1.7%	-100	-1.7%
Professional & Business Services	13,400	13,200	13,000	200	1.5%	400	3.1%
Educational & Health Services	37,200	37,100	35,800	100	0.3%	1,400	3.9%
Hospitals	7,600	7,500	7,400	100	1.3%	200	2.7%
Leisure & Hospitality	15,900	15,500	15,700	400	2.6%	200	1.3%
Food Services and Drinking Places	11,400	11,200	11,600	200	1.8%	-200	-1.7%
Other Services	7,000	6,900	6,800	100	1.5%	200	2.9%
<b>Total Government</b>	<b>15,000</b>	<b>15,000</b>	<b>15,300</b>	<b>0</b>	<b>0.0%</b>	<b>-300</b>	<b>-2.0%</b>
Federal Government	900	900	900	0	0.0%	0	0.0%
State Government	2,300	2,600	2,700	-300	-11.5%	-400	-14.8%
Local Government	11,800	11,500	11,700	300	2.6%	100	0.9%
Local Government Educational Services	6,500	6,400	6,400	100	1.6%	100	1.6%

Source: Indiana Dept of Workforce Development, Research and Analysis, Current Employment Statistics



Source: Indiana Department of Workforce Development, Research & Analysis, Current Employment Statistics | Note: Historical data for the most recent 4 years (both seasonally adjusted and not seasonally adjusted) are revised near the beginning of each calendar year, prior to the release of January estimates for statewide data.

Frequently Listed Jobs	
Top 20 job listings by number of openings in Region 2 in the past month	
Rank	Occupations
1	Shuttle Drivers and Chauffeurs
2	Production Workers, All Other
3	Cooks, Institution and Cafeteria
4	Registered Nurses
5	First-Line Supervisors of Production and Operating Workers
6	Furnace, Kiln, Oven, Drier, and Kettle Operators and Tenders
7	Healthcare Support Workers, All Other
8	Maintenance and Repair Workers, General
9	Software Developers
10	Tellers
11	Community and Social Service Specialists, All Other
12	Construction Laborers
13	Dietitians and Nutritionists
14	Farmers, Ranchers, and Other Agricultural Managers
15	Heavy and Tractor-Trailer Truck Drivers
16	Helpers--Production Workers
17	Medical Assistants
18	Merchandise Displayers and Window Trimmers
19	New Accounts Clerks
20	Quality Control Analysts

Source: Indiana Workforce Development, Indiana Career Connect

Applicant Pool	
Top 20 occupations desired by applicants on their resumes in the past 12 months	
Occupations	# of applicants
Production Workers, All Other	1,755
Assemblers and Fabricators, All Other	1,076
Helpers--Production Workers	792
Laborers and Freight, Stock, and Material Movers, Hand	430
Customer Service Representatives	417
Cashiers	383
Office Clerks, General	309
First-Line Supervisors of Production and Operating Workers	280
Team Assemblers	260
Heavy and Tractor-Trailer Truck Drivers	244
Shipping, Receiving, and Traffic Clerks	243
Office and Administrative Support Workers, All Other	229
Welders, Cutters, Solderers, and Brazers	222
Industrial Truck and Tractor Operators	219
Packers and Packagers, Hand	213
Inspectors, Testers, Sorters, Samplers, and Weighers	213
Retail Salespersons	195
Managers, All Other	173
Receptionists and Information Clerks	158
Machinists	149

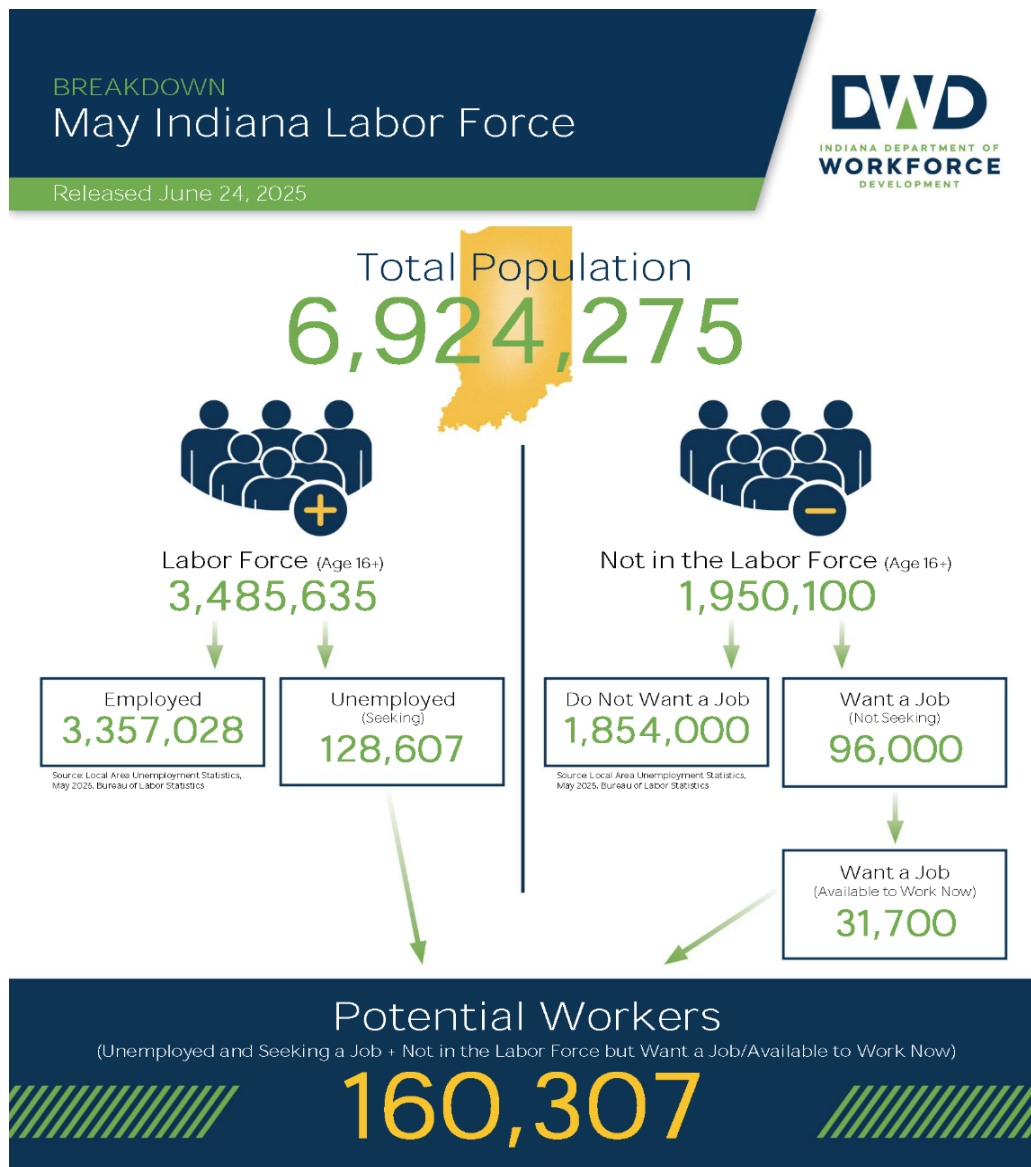
Source: Indiana Workforce Development, Indiana Career Connect

\* Due to an upgrade in the reporting system, there is a notable change in Job Postings recorded. The tool used to measure Job Postings was upgraded to prevent malicious or false postings. While customers adjust to the enhancements a drop in the record is to be expected.



Statewide Average Weekly Hours & Earnings by Industry for May 2025			
Industry	Average Earnings (per hour)	Average # of hours worked (weekly)	Average Earnings (per week)
Construction	\$35.73	39.5	\$1,411.34
Manufacturing	\$25.93	42.5	\$1,102.03
Durable Goods	\$26.92	44.2	\$1,189.86
Fabricated Metal Product Manufacturing	\$26.18	41.9	\$1,096.94
Transportation Equipment Manufacturing	\$28.60	43.5	\$1,244.10
Non-Durable Goods	\$23.14	38.3	\$886.26
Retail Trade	\$20.17	27.9	\$562.74
Financial Activities	\$27.74	36.6	\$1,015.28
Health Care and Social Assistance	\$30.43	32.6	\$992.02
Accommodation and Food Services	\$17.22	24.2	\$416.72
Food Services and Drinking Places	\$16.82	24.1	\$405.36

Source: Indiana Department of Workforce Development, Current Employment Statistics



## County Unemployment Rates May 2025



INDIANA DEPARTMENT OF  
**WORKFORCE**  
DEVELOPMENT

### Questions?

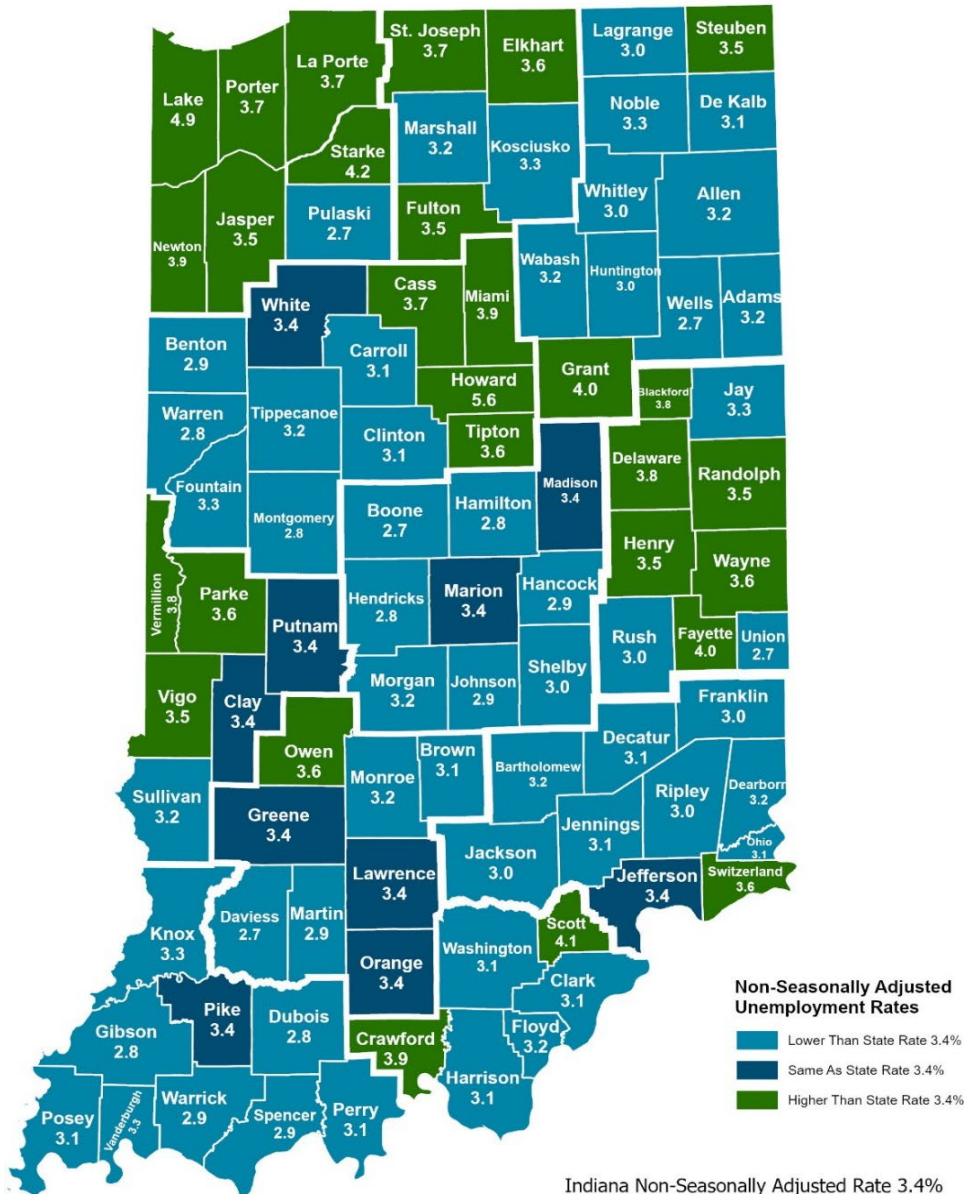
Please contact the DWD  
Research and Analysis  
Regional Labor Analyst  
listed below:

Kathy Jaworski  
Regional Labor Analyst  
Research and Analysis

[Indiana Department of  
Workforce Development](https://www.in.gov/dwd/)

219-841-6347

[kjaworski@dwd.in.gov](mailto:kjaworski@dwd.in.gov)



Indiana Non-Seasonally Adjusted Rate 3.4%

Indiana Seasonally Adjusted Rate 3.7%

Source: DWD, Local Area Unemployment Statistics