

HOOSIERS BY THE NUMBERS

Your premier source for labor market information for Indiana.



LABOR MARKET REVIEW



August 2019 Labor Market Review

Reported by: Kathy Jaworski

Regional Workforce Analyst
[Email Kathy](#)
kjaworski@dwd.in.gov

Tel: 219-841-6347



LABOR MARKET REVIEW

Economic Growth Region 2

Statistical Data Report for August 2019, Released October 2019

State Employment and Unemployment

Unemployment rates were lower in August in 5 states, higher in 3 states, and stable in 42 states and the District of Columbia, the U.S. Bureau of Labor Statistics reported. Five states had jobless rate decreases from a year earlier, 2 states had increases, and 43 states and the District had little or no change. The national unemployment rate, 3.7 percent, was unchanged over the month and little changed from August 2018. Vermont had the lowest unemployment rate in August, 2.1 percent. The rates in Alabama (3.1 percent), Alaska (6.2 percent), Illinois (4.0 percent), Maine (2.9 percent), and New Jersey (3.2 percent) set new series lows. (All state series begin in 1976.) Alaska had the highest jobless rate, 6.2 percent. In total, 14 states had unemployment rates lower than the U.S. figure of 3.7 percent, 8 states and the District of Columbia had higher rates, and 28 states had rates that were not appreciably different from that of the nation.

Nonfarm payroll employment increased in 5 states in August 2019, decreased in 1 state, and was essentially unchanged in 44 states and the District of Columbia. Over the year, 26 states added nonfarm payroll jobs and 24 states and the District were essentially unchanged. The largest job gains occurred in California (+34,500), Florida (+22,500), and Georgia (+20,800).



Economic Growth Region (EGR) 2

Elkhart, Fulton,
Kosciusko, Marshall
and St. Joseph
Counties

Unemployment Rates by State (seasonally adjusted): August 2019

U.S. - 3.7%

Illinois - 4%

Indiana - 3.3%

Kentucky - 4.4%

Michigan - 4.2%

Ohio - 4.1%

Source: U.S. Department of Labor, Bureau of Labor Statistics

Unemployment Rank by County (of 92 counties): August 2019

#20 - St. Joseph (3.6%)

#51 - Elkhart (3%)

#55 - Marshall (3%)

#61 - Fulton (2.9%)

#75 - Kosciusko (2.7%)

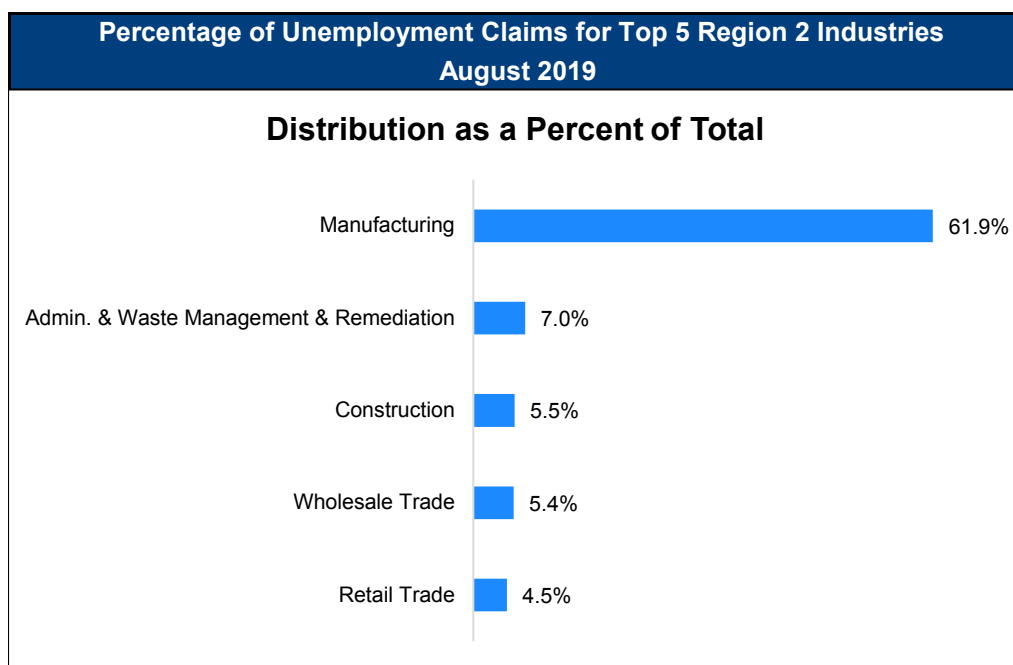
Source: Indiana Department of Workforce Development, Research and Development, Local Area Unemployment Statistics

August 2019 Labor Force Estimates (not seasonally adjusted)						
Area	Labor Force	Employed	Unemployed	Aug-19	Jul-19	Aug-18
U.S.	164,019,000	157,816,000	6,203,000	3.8%	4.0%	3.9%
IN	3,398,091	3,288,977	109,114	3.2%	3.6%	3.6%
EGR 2	330,637	320,045	10,592	3.2%	3.7%	3.4%
Elkhart-Goshen MSA	116,776	113,304	3,472	3.0%	3.6%	2.9%
South Bend-Mishawaka MSA	161,362	155,301	6,061	3.8%	4.2%	3.9%
Elkhart Co.	116,776	113,304	3,472	3.0%	3.6%	2.9%
Fulton Co.	10,155	9,857	298	2.9%	3.0%	3.5%
Kosciusko Co.	43,577	42,397	1,180	2.7%	3.2%	2.9%
Marshall Co.	23,489	22,786	703	3.0%	3.4%	3.3%
St Joseph Co.	136,640	131,701	4,939	3.6%	4.0%	3.9%
Elkhart	27,439	26,400	1,039	3.8%	4.5%	3.5%
Goshen	18,114	17,598	516	2.8%	3.6%	2.9%
Mishawaka	26,270	25,376	894	3.4%	3.7%	3.4%
Plymouth	4,376	4,248	128	2.9%	3.3%	4.2%
South Bend	48,445	46,462	1,983	4.1%	4.5%	4.6%
Warsaw	7,922	7,689	233	2.9%	3.3%	3.3%

Source: Indiana Department of Workforce Development, Research & Analysis, Local Area Unemployment Statistics | Unemployment Statistics Released:09/19 | Notes: The data displayed are presented as estimates only. The most recent month's data are always preliminary and are revised when the next month's data are released.

Consumer Price Index (CPI-U Change), Unadjusted Percent Change to August 2019 from				
CPI Item	Aug-18	Jul-19	Aug-18	Jul-19
	U.S. City		Midwest Region*	
All Items	1.7%	0.0%	1.5%	0.0%
Food & Beverages	1.7%	0.1%	1.7%	0.1%
Housing	2.8%	0.1%	2.5%	0.0%
Apparel	1.0%	1.2%	2.8%	2.2%
Transportation	-1.1%	-1.1%	-1.0%	-1.1%
Medical Care	3.5%	0.6%	3.2%	1.0%
Recreation	1.2%	0.3%	0.4%	0.0%
Education & Communication	0.6%	0.4%	-0.7%	0.3%
Other Goods & Services	2.3%	0.3%	2.3%	0.1%

*Midwest region = Midwest Urban Average. Midwest Region includes Illinois, Indiana, Iowa, Kansas, Michigan, Minnesota, Missouri, Nebraska, North Dakota, Ohio, South Dakota and Wisconsin | Source: U.S. Bureau of Labor Statistics



Source: Indiana Department of Workforce Development, Research and Analysis

WARN Notices

WARN Notices for Region 2 for August 2019				
Company	City	County	# affected	Notice Date
HOYA Optical Labs of America, Inc.	Plymouth	Marshall	83	8/6/2019

Source: Indiana Department of Workforce Development, WARN Notices | For information on WARN Act requirements, you may go to the U.S. Department of Labor Employment Training Administration Fact Sheet:

<https://www.doleta.gov/programs/factsht/warn.htm>

Unemployment Claims: August 2019

Region 2

Initial Claims

08/03/19 - 266(D)

08/10/19 - 476

08/17/19 - 208(D)

08/24/19 - 182(D)

08/31/19 - 207(D)

Continued Claims

08/03/19 - 1,624

08/10/19 - 1,387

08/17/19 - 1,362

08/24/19 - 1,382

08/31/19 - 1,420

Total Claims

08/03/19 - 1,890

08/10/19 - 1,863

08/17/19 - 1,570

08/24/19 - 1,564

08/31/19 - 1,627

State of Indiana

Initial Claims

08/03/19 - 1,851

08/10/19 - 2,240

08/17/19 - 1,773

08/24/19 - 1,701

08/31/19 - 1,718

Continued Claims

08/03/19 - 11,590

08/10/19 - 11,212

08/17/19 - 11,050

08/24/19 - 11,083

08/31/19 - 10,959

Total Claims

08/03/19 - 13,441

08/10/19 - 13,452

08/17/19 - 12,823

08/24/19 - 12,784

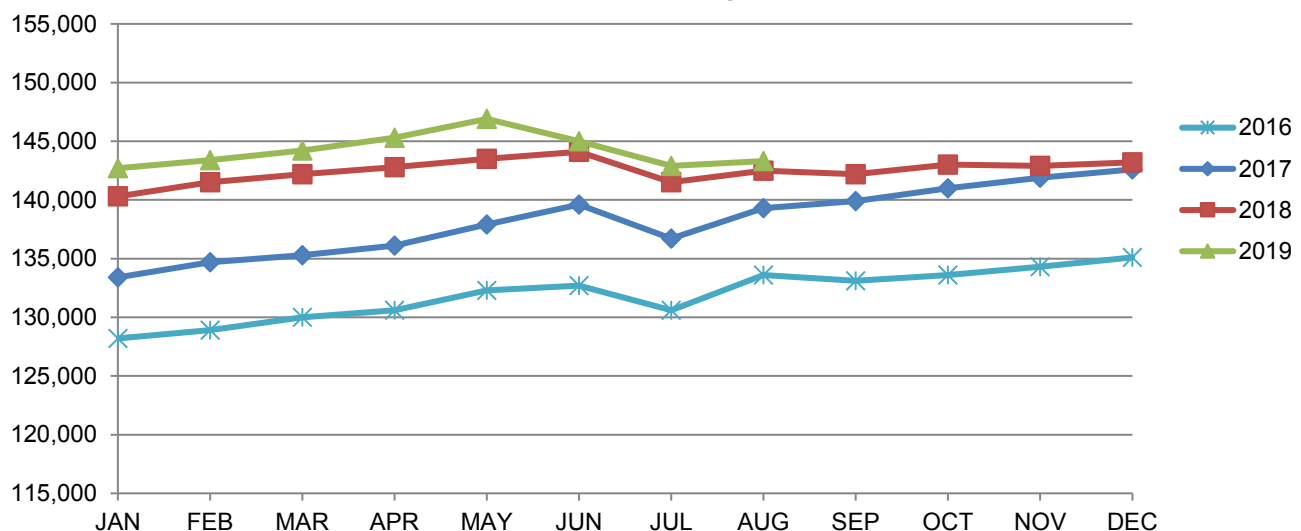
08/31/19 - 12,677

(D) Indicates one or more counties are excluded due to non-disclosure issues | Source: Indiana Department of Workforce Development, Research and Analysis

Elkhart-Goshen MSA							
Wage and Salaried Employment	August 2019			# Change	% Change	# Change	% Change
Industry	Aug-19	Jul-19	Aug-18	Jul-19 to Aug-19		Aug-18 to Aug-19	
Total Nonfarm	142,800	142,000	142,500	800	0.6%	300	0.2%
Total Private	134,800	135,500	133,800	-700	-0.5%	1,000	0.8%
Goods Producing	74,400	75,200	74,500	-800	-1.1%	-100	-0.1%
Service-Providing	68,400	66,800	68,000	1,600	2.4%	400	0.6%
Private Service Providing	60,400	60,300	59,300	100	0.2%	1,100	1.9%
Mining, Logging and Construction	4,400	4,500	4,100	-100	-2.2%	300	7.3%
Manufacturing	70,000	70,700	70,400	-700	-1.0%	-400	-0.6%
Durable Goods	58,700	59,200	59,800	-500	-0.8%	-1,100	-1.8%
Transportation Equipment Manufacturing	34,500	35,300	36,800	-800	-2.3%	-2,300	-6.3%
Motor Vehicle Body and Trailer Manufacturing	29,700	30,000	30,900	-300	-1.0%	-1,200	-3.9%
Trade, Transportation, and Utilities	20,600	20,600	20,700	0	0.0%	-100	-0.5%
Wholesale Trade	7,400	7,400	7,200	0	0.0%	200	2.8%
Retail Trade	9,600	9,600	10,000	0	0.0%	-400	-4.0%
Transportation, Warehousing, and Utilities	3,600	3,600	3,500	0	0.0%	100	2.9%
Information	400	400	400	0	0.0%	0	0.0%
Financial Activities	3,000	3,000	3,000	0	0.0%	0	0.0%
Professional and Business Services	11,300	11,200	10,800	100	0.9%	500	4.6%
Education and Health Services	12,300	12,300	12,100	0	0.0%	200	1.7%
Leisure and Hospitality	8,600	8,600	8,200	0	0.0%	400	4.9%
Other Services	4,200	4,200	4,100	0	0.0%	100	2.4%
Government	8,000	6,500	8,700	1,500	23.1%	-700	-8.1%
Federal Government	300	300	300	0	0.0%	0	0.0%
State Government	400	400	300	0	0.0%	100	33.3%
Local Government	7,300	5,800	8,100	1,500	25.9%	-800	-9.9%
Local Government Educational Services	4,600	3,200	5,300	1,400	43.8%	-700	-13.2%

Source: Indiana Dept of Workforce Development, Research and Analysis, Current Employment Statistics

Elkhart-Goshen MSA Employment Trends

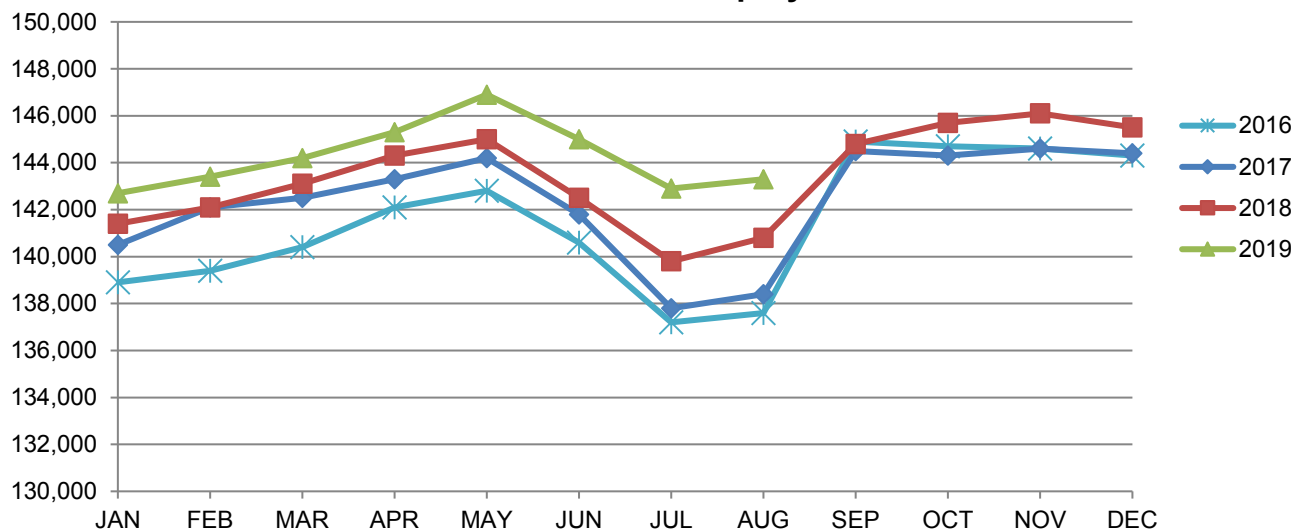


Source: Indiana Department of Workforce Development, Research & Analysis, Current Employment Statistics | Note: Historical data for the most recent 4 years (both seasonally adjusted and not seasonally adjusted) are revised near the beginning of each calendar year, prior to the release of January estimates for statewide data.

South Bend-Mishawaka MSA							
Wage and Salaried Employment	August 2019			# Change	% Change	# Change	% Change
Industry	Aug-19	Jul-19	Aug-18	Jul-19 to Aug-19		Aug-18 to Aug-19	
Total Nonfarm	143,300	142,900	140,800	400	0.3%	2,500	1.8%
Total Private	128,700	128,300	126,700	400	0.3%	2,000	1.6%
Goods Producing	24,900	25,200	24,100	-300	-1.2%	800	3.3%
Service Providing	118,400	117,700	116,700	700	0.6%	1,700	1.5%
Private Service Providing	103,800	103,100	102,600	700	0.7%	1,200	1.2%
Mining, Logging and Construction	6,800	6,900	6,200	-100	-1.5%	600	9.7%
Manufacturing	18,100	18,300	17,900	-200	-1.1%	200	1.1%
Trade, Transportation and Utilities	25,500	25,700	25,800	-200	-0.8%	-300	-1.2%
Wholesale Trade	6,900	7,000	6,700	-100	-1.4%	200	3.0%
Retail Trade	14,200	14,300	14,800	-100	-0.7%	-600	-4.1%
General Merchandise Stores	3,500	3,500	3,500	0	0.0%	0	0.0%
Transportation, Warehousing and Utilities	4,400	4,400	4,300	0	0.0%	100	2.3%
Information	1,500	1,500	1,500	0	0.0%	0	0.0%
Financial Activities	5,600	5,600	5,600	0	0.0%	0	0.0%
Professional & Business Services	14,000	14,000	14,000	0	0.0%	0	0.0%
Educational & Health Services	34,500	33,600	33,600	900	2.7%	900	2.7%
Hospitals	6,600	6,600	6,300	0	0.0%	300	4.8%
Leisure & Hospitality	15,600	15,500	15,200	100	0.7%	400	2.6%
Food Services and Drinking Places	11,700	11,600	11,700	100	0.9%	0	0.0%
Other Services	7,100	7,200	6,900	-100	-1.4%	200	2.9%
Total Government	14,600	14,600	14,100	0	0.0%	500	3.6%
Federal Government	1,000	1,000	900	0	0.0%	100	11.1%
State Government	2,300	2,300	2,300	0	0.0%	0	0.0%
Local Government	11,300	11,300	10,900	0	0.0%	400	3.7%
Local Government Educational Services	5,500	5,500	5,300	0	0.0%	200	3.8%

Source: Indiana Dept of Workforce Development, Research and Analysis, Current Employment Statistics

South Bend-Mishawaka MSA Employment Trends



Source: Indiana Department of Workforce Development, Research & Analysis, Current Employment Statistics | Note: Historical data for the most recent 4 years (both seasonally adjusted and not seasonally adjusted) are revised near the beginning of each calendar year, prior to the release of January estimates for statewide data.

Frequently Listed Jobs	
Top 20 job listings by number of openings in Region 2 in the past month	
Rank	Occupations
1	Retail Salespersons
2	Laborers and Freight, Stock, and Material Movers, Hand
3	Production Workers, All Other
4	Chemical Plant and System Operators
5	First-Line Supervisors of Production and Operating Workers
6	Cement Masons and Concrete Finishers
7	Combined Food Preparation and Serving Workers, Including Fast Food
8	Security Guards
9	Construction Laborers
10	Welders, Cutters, and Welder Fitters
11	Licensed Practical and Licensed Vocational Nurses
12	Managers, All Other
13	Business Operations Specialists, All Other
14	Construction Carpenters
15	Customer Service Representatives
16	Computer User Support Specialists
17	Engineers, All Other
18	Maintenance Workers, Machinery
19	Welding, Soldering, and Brazing Machine Setters, Operators, and Tenders
20	Accountants

Source: Indiana Workforce Development, Indiana Career Connect

Applicant Pool	
Top 20 occupations desired by applicants on their resumes in the past 12 months	
Occupations	# of applicants
Production Workers, All Other	696
Assemblers and Fabricators, All Other	455
Helpers--Production Workers	353
Customer Service Representatives	224
Laborers and Freight, Stock, and Material Movers, Hand	189
Cashiers	173
Office Clerks, General	143
First-Line Supervisors of Production and Operating Workers	137
Stock Clerks and Order Fillers	127
Office and Administrative Support Workers, All Other	115
Team Assemblers	115
Welders, Cutters, Solderers, and Brazers	111
Shipping, Receiving, and Traffic Clerks	103
Inspectors, Testers, Sorters, Samplers, and Weighers	101
Retail Salespersons	100
Nursing Assistants	97
Receptionists and Information Clerks	89
Administrative Services Managers	87
Industrial Truck and Tractor Operators	84
Managers, All Other	84

Source: Indiana Workforce Development, Indiana Career Connect

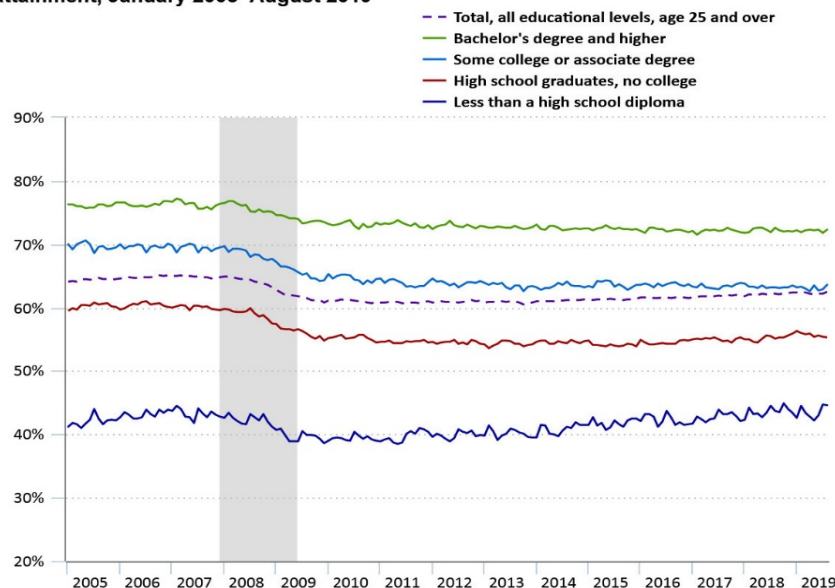
Statewide Average Weekly Hours & Earnings by Industry for August 2019			
Industry	Average Earnings (per hour)	Average # of hours worked (weekly)	Average Earnings (per week)
Construction	\$27.02	41.5	\$1,121.33
Manufacturing	\$21.71	42.1	\$913.99
Durable Goods	\$22.33	42.8	\$955.72
Fabricated Metal Product Manufacturing	\$17.79	42.0	\$747.18
Transportation Equipment Manufacturing	\$25.81	43.6	\$1,125.32
Non-Durable Goods	\$20.04	40.3	\$807.61
Retail Trade	\$14.99	31.0	\$464.69
Financial Activities	\$24.06	35.9	\$863.75
Health Care and Social Assistance	\$23.61	33.1	\$781.49
Accommodation and Food Services	\$12.15	24.2	\$294.03
Food Services and Drinking Places	\$11.69	23.4	\$273.55

Source: Indiana Department of Workforce Development, Current Employment Statistics

44.6 percent of high school dropouts and 72.3 percent of college graduates employed in August 2019

In August 2019, 62.5 percent of people age 25 and over were employed. The employment–population ratio among those with less than a high school education was 44.6 percent, while those with at least a bachelor's degree had an employment–population ratio of 72.3 percent.

Employment–population ratio of people age 25 years and over, by educational attainment, January 2005–August 2019



Shaded area represents a recession as determined by the National Bureau of Economic Research.
Source: U.S. Bureau of Labor Statistics.

Since 2005, the employment–population ratio for people with less than a high school diploma has ranged from a low of 38.5 percent in May 2011 to a high of 44.9 percent in October 2018. The ratio has been 44.0 percent or higher only during 1 month in 2005, 3 months in 2007, and 7 months during 2018 and 2019. Over the 2005–19 period, the employment–population ratio for people with a high school diploma (no college) reached its high of 61.0 percent in July 2006 and its low of 53.6 percent in February 2013. The highest ratio during this period for people with some college or an associate degree was 70.6 percent in May 2005; the low was 62.6 percent in October 2013 and April 2019. The highest employment–population ratio among people with a bachelor's degree or higher education during the 2005–19 period was 77.2 percent in February 2007, while the lowest ratio for these people was 71.5 percent in February 2017.

These data are from the Current Population Survey. See "The Employment Situation — August 2019" for more information. More charts featuring Current Population Survey data are presented in Charts related to the latest "The Employment Situation" news release. The employment–population ratio is the proportion of the civilian noninstitutional population that is employed. Source: Bureau of Labor Statistics, U.S. Department of Labor, The Economics Daily, 44.6 percent of high school dropouts and 72.3 percent of college graduates employed in August 2019 on the Internet at <https://www.bls.gov/opub/ted/2019/44-6-percent-of-high-school-dropouts-and-72-3-percent-of-college-graduates-employed-in-august-2019.htm>.



INDIANA
DEPARTMENT OF
WORKFORCE
DEVELOPMENT

County Unemployment Rates August 2019

Questions?

Please contact the DWD
Research and Analysis
Regional Labor Analyst
listed below:

Kathy Jaworski
Regional Labor Analyst
Research and Analysis

[Indiana Department of
Workforce Development](https://www.in.gov/dwd/)

219-841-6347

kjaworski@dwd.in.gov

