

Indiana's Employment and Labor Force Estimates September 2021

10/20/2021

Data is embargoed until 10 AM October 22, 2021

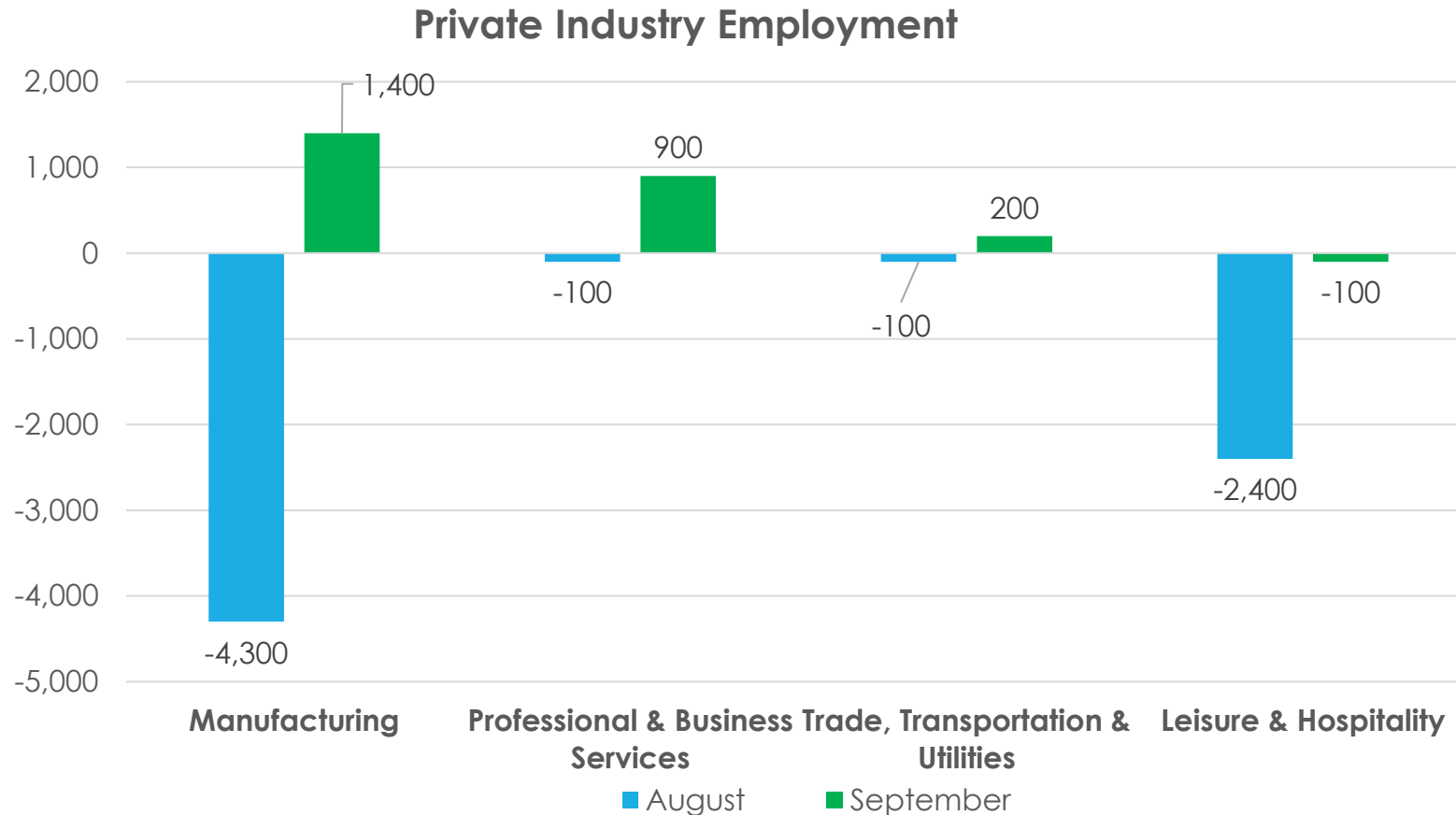
Key Points

- **Indiana's unemployment rate is 4.0%. The U.S. is at 4.8%.**
- **Indiana's Labor Force is at 3,341,532.**
- Indiana's Labor Force decreased by 1,439 due to an increase in employment of 1,156 and a decrease in unemployment of 2,595.
- Indiana's Labor Force has increased 9,716 over the year.
- Indiana's Labor Force Participation Rate is now at 63.0%. This is above the U.S. Labor Force Participation Rate of 61.6%.

Key Points: September 2021

Indiana's Private Employment

- Decreased by 300 jobs over the month and recovered 63,500 jobs over the year.
- September private employment = 2,650,700.



Comparing Local Area Unemployment Statistics (LAUS) and Current Employment Statistics (CES)

LAUS (Labor Force by Residence)

This counts people, not jobs, and is...

- An estimate of employment based on where the employee lives, rather than where they work
- Used in calculating the labor force

CES (Employment by Job)

This counts jobs, not people, and is...

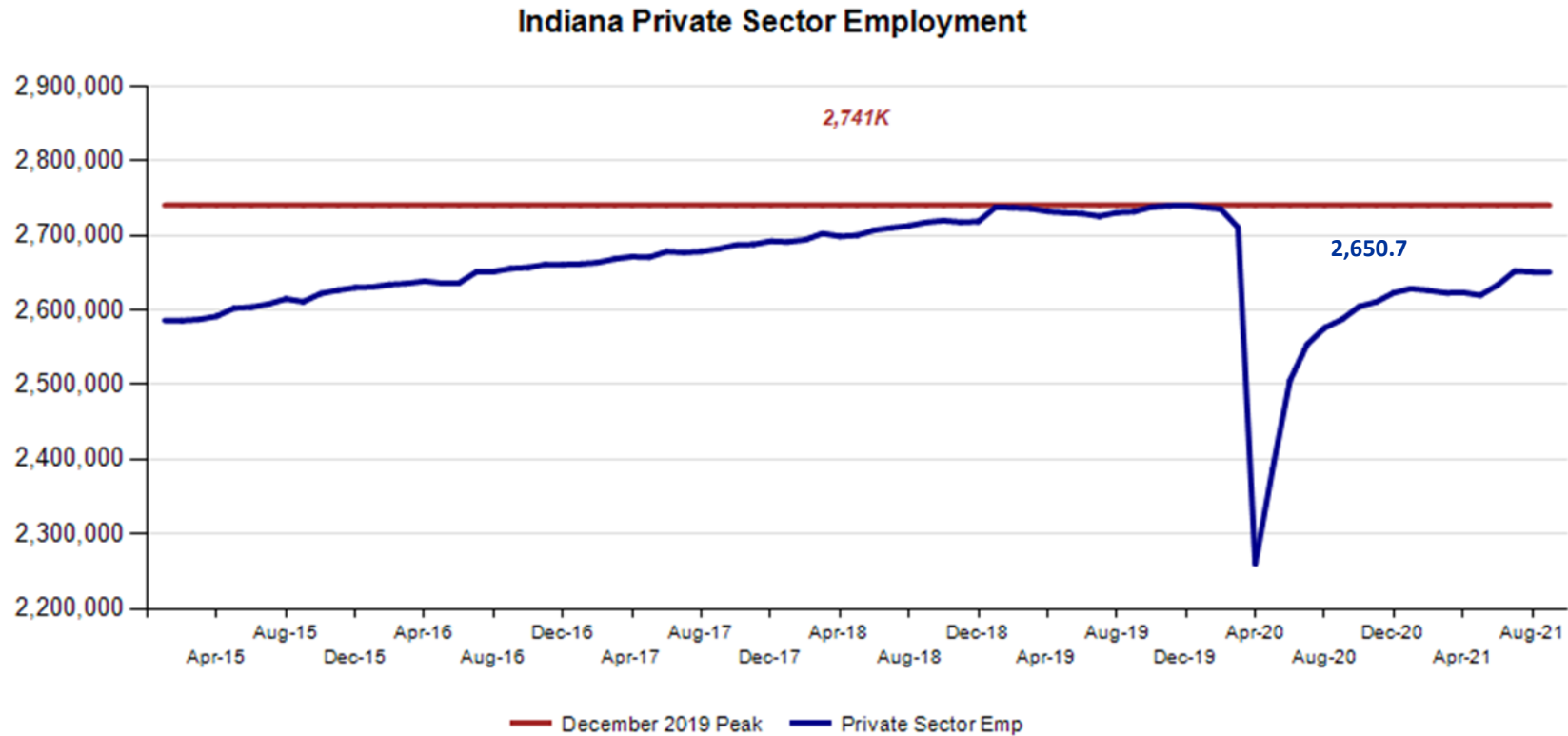
- An estimate of employment based on the location of the job regardless of the worker's residence
- Also called nonag wage and salary or nonfarm employment
- Used in Quarterly Census of Employment and Wages (QCEW), Occupational Employment Statistics (OES) and CES data

CES Monthly Jobs Report

Revisions to AUGUST 2021 Estimates						
INDUSTRY TITLE	Jul	Aug Prel	Aug Rev	Revision	Chg from Jul	Pre Chg from Jul
Total Nonfarm	3064.2	3059.8	3061.9	2.1	-2.3	-4.4
Total Private	2652.2	2648.8	2651.0	2.2	-1.2	-3.4
Goods Producing	686.1	682.2	683.4	1.2	-2.7	-3.9
Service-Providing	2378.1	2377.6	2378.5	0.9	0.4	-0.5
Private Service Providing	1966.1	1966.6	1967.6	1.0	1.5	0.5
Construction	144.8	145.1	144.8	-0.3	0.0	0.3
Manufacturing	535.9	531.6	533.1	1.5	-2.8	-4.3
Trade, Transportation, and Utilities	605.5	605.4	605.9	0.5	0.4	-0.1
Wholesale Trade	117.3	117.5	118.1	0.6	0.8	0.2
Retail Trade	317.1	315.5	315.8	0.3	-1.3	-1.6
Transportation, Warehousing, and Utilities	171.1	172.4	172.0	-0.4	0.9	1.3
Information	24.3	24.8	24.9	0.1	0.6	0.5
Financial Activities	138.8	139.0	139.0	0.0	0.2	0.2
Finance and Insurance	106.2	106.1	106.1	0.0	-0.1	-0.1
Real Estate and Rental and Leasing	32.6	32.9	32.9	0.0	0.3	0.3
Professional and Business Services	327.4	327.3	326.8	-0.5	-0.6	-0.1
Professional, Scientific, and Technical Services	128.6	129.3	129.5	0.2	0.9	0.7
Management of Companies and Enterprises	36.8	37.3	37.1	-0.2	0.3	0.5
Admin & Support & Waste Mgmt & Remediation Services	162.0	160.7	160.2	-0.5	-1.8	-1.3
Education and Health Services	469.0	470.9	471.7	0.8	2.7	1.9
Educational Services	59.0	60.0	60.1	0.1	1.1	1.0
Health Care and Social Assistance	410.0	410.9	411.6	0.7	1.6	0.9
Leisure and Hospitality	286.6	284.2	284.5	0.3	-2.1	-2.4
Other Services	114.5	115.0	114.8	-0.2	0.3	0.5
Government	412.0	411.0	410.9	-0.1	-1.1	-1.0

Indiana Private Sector Employment

September 2021 total private employment is 89,800 below the December 2019 pre-pandemic peak.



Indiana Private Sector Employment Change

September 2021 decreased by 300 jobs over the month and is up 63,500 jobs over the year.

IN Employment Change Over the Month, Year-to-Date and Over the Year (seasonally adjusted)

Industry	September 2020	December 2020	August 2021	September 2021	Month Change	Y-to-D Change	Y-to-Y Change
Private Educational & Health Services	461.9	461.3	471.7	471.0	-0.7	9.7	9.1
.....Private Educational Services	55.9	51.8	60.1	58.1	-2.0	6.3	2.2
.....Health Care & Social Assistance	406.0	409.5	411.6	412.9	1.3	3.4	6.9
Manufacturing	511.1	519.5	533.1	534.5	1.4	15.0	23.4
Professional & Business Services	323.6	333.9	326.8	327.7	0.9	-6.2	4.1
Financial Activities	139.6	141.0	139.0	138.7	-0.3	-2.3	-0.9
Construction	144.6	150.3	144.8	143.4	-1.4	-6.9	-1.2
Leisure and Hospitality	268.6	270.7	284.5	284.4	-0.1	13.7	15.8
Trade, Transportation & Utilities	595.4	605.1	605.9	606.1	0.2	1.0	10.7
.....Trade	427.1	433.1	433.9	434.6	0.7	1.5	7.5
.....Transportation, Warehousing & Utilities	168.3	172.0	172.0	171.5	-0.5	-0.5	3.2
All Other	142.4	141.3	145.2	144.9	-0.3	3.6	2.5
Total Private	2,587.2	2,623.1	2,651.0	2,650.7	-0.3	27.6	63.5
Government (Includes Public Schools & Hospitals)	412.6	401.7	410.9	408.1	-2.8	6.4	-4.5
Total Nonfarm	2,999.8	3,024.8	3,061.9	3,058.8	-3.1	34.0	59.0
United States Total Private	120,008.0	121,047.0	125,252.0	125,569.0	317.0	4,522.0	5,561.0

- **Manufacturing recovered 1,400 jobs** over the month.
- **All Other Professional & Business Services 900** recovered jobs over the month.

Source: Current Employment Statistics (seasonally adjusted)

For month to month change, [visit this link](#).

Indiana Private Sector Employment Change From Peak and Trough

September 2021 estimates show Indiana private jobs decreased 89,800 since December 2019.

IN Statewide Estimates (seasonally adjusted) -- September 2021

Supersector	Private Empl. Peak December 2019	Private Empl. Trough April 2020	August 2021	September 2021	Change Since Peak	Change Since Trough	Month to Month Change
Private Educational & Health Services	483.4	435.0	471.7	471.0	-12.4	36.0	-0.7
.....Private Educational Services	62.9	51.0	60.1	58.1	-4.8	7.1	-2.0
.....Health Care & Social Assistance	420.5	384.0	411.6	412.9	-7.6	28.9	1.3
Manufacturing	537.7	421.4	533.1	534.5	-3.2	113.1	1.4
Professional & Business Services	346.9	297.8	326.8	327.7	-19.2	29.9	0.9
Financial Activities	143.0	137.8	139.0	138.7	-4.3	0.9	-0.3
Construction	147.3	132.7	144.8	143.4	-3.9	10.7	-1.4
Leisure and Hospitality	314.7	178.0	284.5	284.4	-30.3	106.4	-0.1
Trade, Transportation & Utilities	604.9	542.3	605.9	606.1	1.2	63.8	0.2
.....Trade	439.4	386.1	433.9	434.6	-4.8	48.5	0.7
.....Transportation, Warehousing & Utilities	165.5	156.2	172.0	171.5	6.0	15.3	-0.5
All Other	162.6	114.9	145.2	144.9	-17.7	30.0	-0.3
Total Private	2,740.5	2,259.9	2,651.0	2,650.7	-89.8	390.8	-0.3
Government (Includes Public Schools & Hospitals)	427.8	404.6	410.9	408.1	-19.7	3.5	-2.8
Total Nonfarm	3,168.3	2,664.5	3,061.9	3,058.8	-109.5	394.3	-3.1
United States Total Private	129,190.0	108,335.0	125,252.0	125,569.0	-3,621.0	17,234.0	317.0

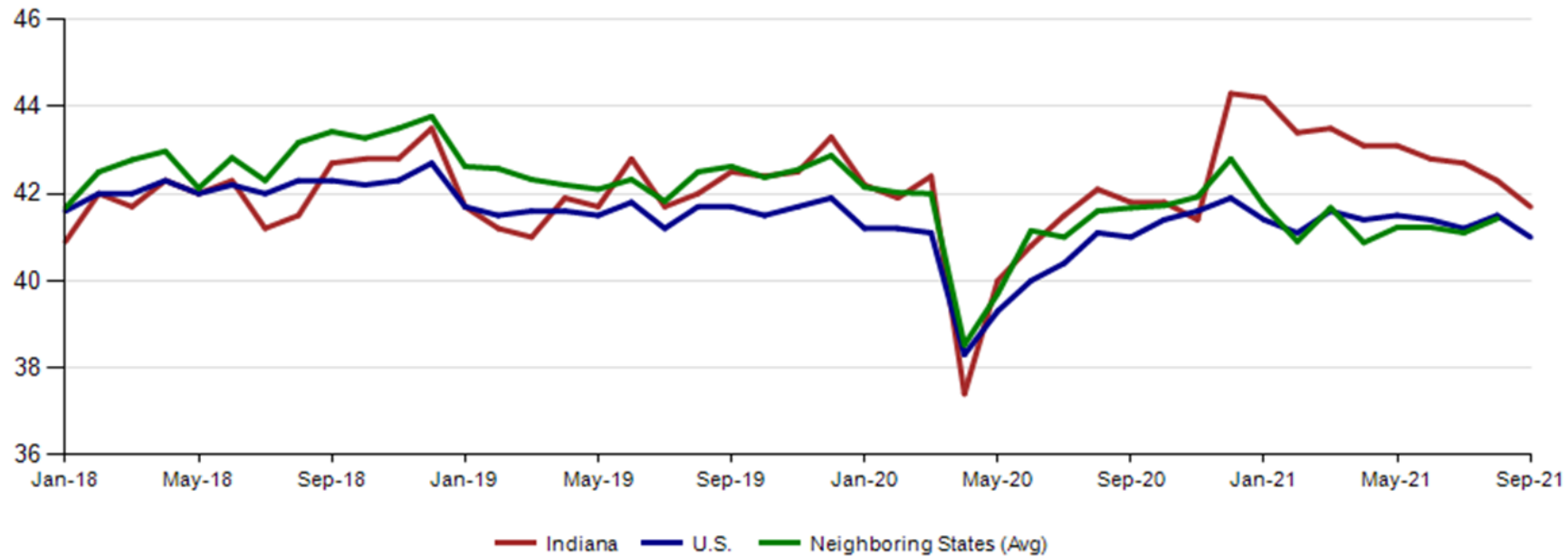
For historical data, [visit this link.](#)

Source: Current Employment Statistics (seasonally adjusted)

Avg. Weekly Manufacturing Production Hours

September 2021 average weekly hours for Indiana manufacturing production hours decreased by 0.6 hours to 41.7 hours. National manufacturing hours decreased 0.5 hours to 41.0 weekly hours, and Midwest states increased at 0.3 hours to 41.4 hours (August 2021 data).

Avg. Weekly Manufacturing Production Hours (non seasonally adjusted)



Monthly Labor Force Report

***Gen5 STARS Monthly Estimation Tables, Official
Indiana, 2021***

Table 1: Year-to-Date Benchmarked Model Estimates

Table 1a: Smoothed Seasonally Adjusted

(SSA Est. appear as the seasonally adjusted in BLS and State official publications and databases)

	Labor Force		Employment		Unemployment		
Month	Level	LFP	Level	EP	Level	Rate	Error Range [†]
JAN	3,347,810	63.3	**3,206,431	**60.7	**141,379	**4.2	3.5- 4.9
FEB	3,342,841	63.2	3,208,912	60.7	**133,929	**4.0	3.3- 4.7
MAR	3,336,773	63.1	3,206,627	60.6	130,146	3.9	3.2- 4.6
APR	3,337,128	63.1	3,205,827	60.6	131,301	3.9	3.2- 4.7
MAY	3,344,131	63.2	3,208,953	60.6	135,178	4.0	3.3- 4.8
JUN	3,347,800	63.2	3,209,313	60.6	138,487	4.1	3.4- 4.8
JUL	3,346,157	63.2	3,208,084	60.6	138,073	4.1	3.4- 4.8
AUG	3,342,971	63.1	3,205,534	60.5	137,437	4.1	3.4- 4.8
SEP	3,341,532	63.0	3,206,690	60.5	134,842	4.0	3.4- 4.7

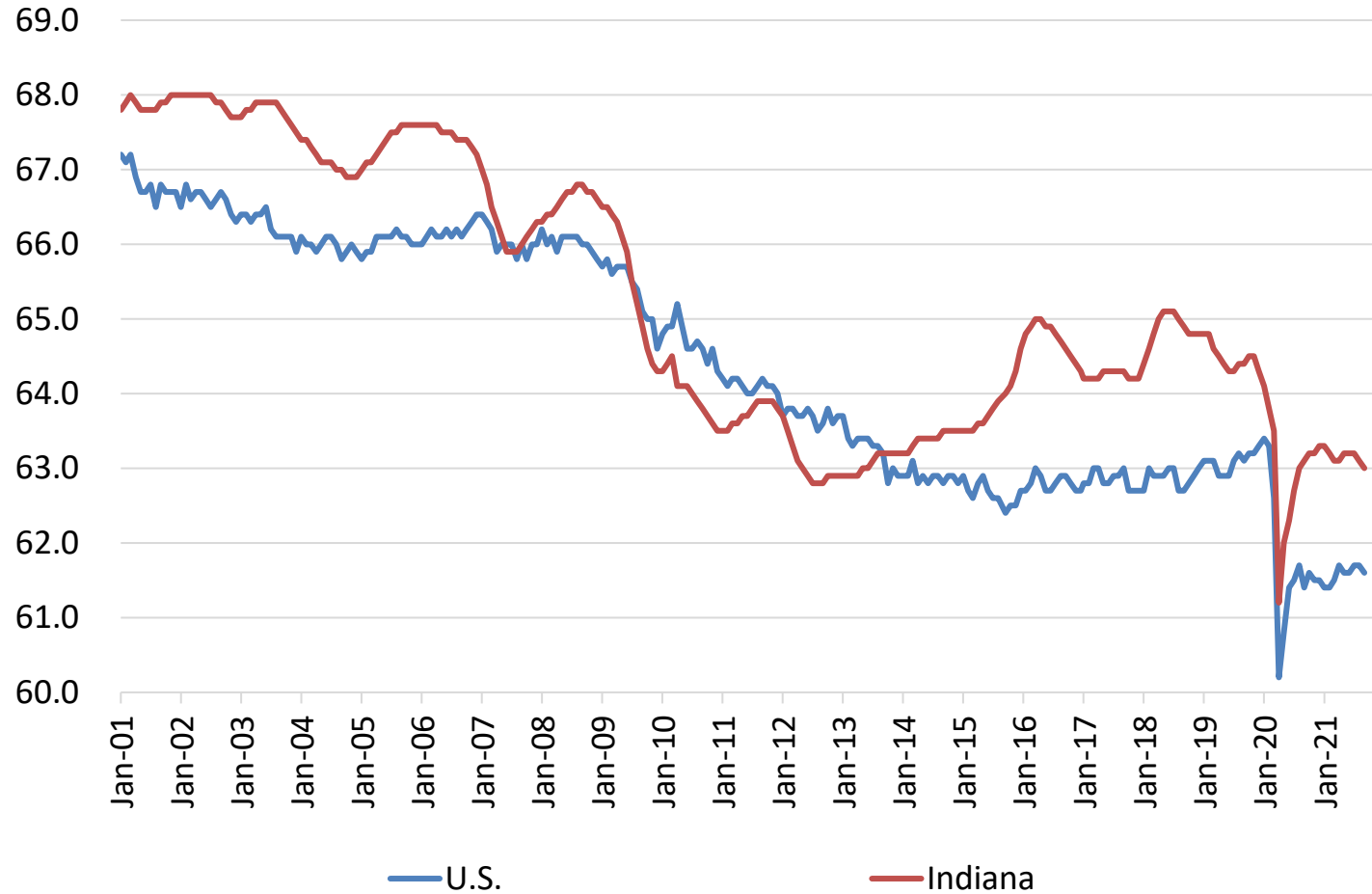
Jobs Data for September 2021

Month NSA	Labor Force	Employed	Unemployed	IN Rate	Total NonFarm	Total Private	Regular UI Claims
Dec-16	3,288,829	3,164,196	124,633	3.8	3,112,000	2,672,400	24,599
Sep-21	3,327,038	3,211,486	115,552	3.5	3,084,000	2,665,100	28,794
Change	38,209	47,290	(9,081)	(0.3)	(28,000)	(7,300)	4,195

Month SA	Labor Force	Employed	Unemployed	IN Rate	Total NonFarm	Total Private	Regular UI Claims
Dec-16	3,317,083	3,185,941	131,142	4.0	3,086,600	2,661,000	24,599
Sep-21	3,341,532	3,206,690	134,842	4.0	3,058,800	2,650,700	28,794
Change	24,449	20,749	3,700	-	(27,800)	(10,300)	4,195

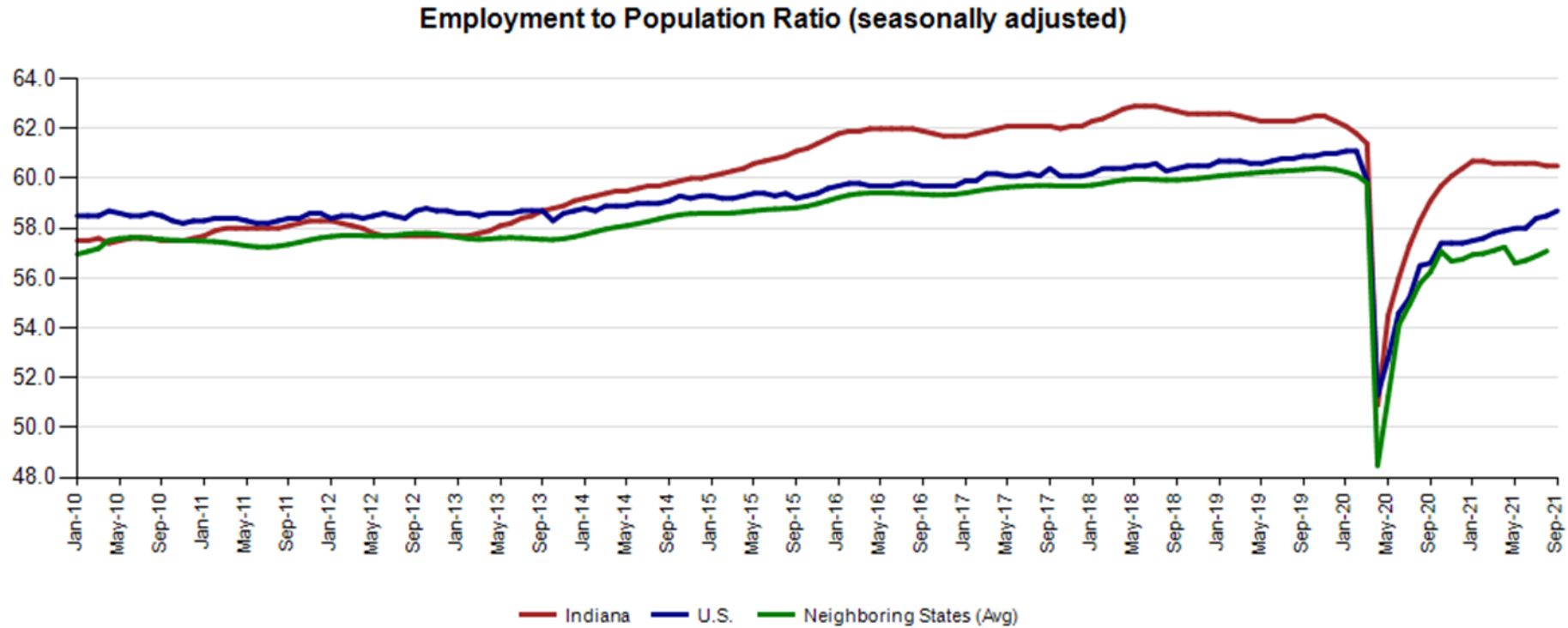
Indiana Labor Force Participation Rate Compared to U.S.

Indiana is at 63.0% compared to the U.S. at 61.6%



Employment to Population Ratio (seasonally adjusted)

The Indiana Employment to Population Ratio for September 2021 is 60.5% compared to the U.S. at 58.7% and Neighboring states at 60.3% (August)



Midwest Comparison Rates: Seasonally Adjusted Over the Year and Over the Month

	Sep-20	Aug-21	Sep-21	Monthly change	Yearly change
Indiana	6.3%	4.1%	4.0%	-0.1%	-2.3%
U.S.	7.8%	5.2%	4.8%	-0.4%	-3.0%
Illinois	10.4%	7.0%	6.8%	-0.2%	-3.6%
Kentucky	5.5%	4.3%	4.3%	0.0%	-1.2%
Michigan	8.2%	4.7%	4.6%	-0.1%	-3.6%
Minnesota	5.8%	3.8%	3.7%	-0.1%	-2.1%
Ohio	7.4%	5.4%	5.4%	0.0%	-2.0%
Wisconsin	5.2%	3.9%	3.9%	0.0%	-1.3%

*2020 Benchmark

Confidential & Deliberative

Alternative Measures of Labor Underutilization 3rd Quarter of 2020 through 2nd Quarter of 2021 Averages

State	U-1	U-2	U-3	U-4	U-5	U-6
Illinois	4.4	5.5	7.9	8.1	8.9	12.6
Indiana	2.3	3.6	5.2	5.4	5.9	8.7
Kentucky	2.3	3.4	5.3	5.6	6.2	8.2
Michigan	3.9	4.7	7.3	7.6	8.5	11.8
Minnesota	2.7	3.5	4.9	5.0	5.7	8.4
Ohio	2.7	4.1	6.3	6.6	7.2	10.6
Wisconsin	2.5	3.6	4.9	5.0	5.5	8.6
United States	3.6	4.7	7.1	7.5	8.2	12.4

The six state measures are based on the same definitions as those published for the U.S.:

- U-1, persons unemployed 15 weeks or longer, as a percent of the civilian labor force;
- U-2, job losers and persons who completed temporary jobs, as a percent of the civilian labor force;
- U-3, total unemployed, as a percent of the civilian labor force (this is the definition used for the official unemployment rate);
- U-4, total unemployed plus discouraged workers, as a percent of the civilian labor force plus discouraged workers;
- U-5, total unemployed, plus discouraged workers, plus all other marginally attached workers, as a percent of the civilian labor force plus all marginally attached workers; and
- U-6, total unemployed, plus all marginally attached workers, plus total employed part time for economic reasons, as a percent of the civilian labor force plus all marginally attached workers.

Third Quarter Labor Force by Race and Age

	Civilian noninstitutional Labor Force participation rate	Rate
Indiana		
Both Sexes		
All Races		
Age 16-19	39.90%	7.4%
White		
Age 16-19	37.60%	5.0%
Black		
Age 16-19	56.70%	10.2%
Hispanic		
Age 16-19	32.40%	13.9%

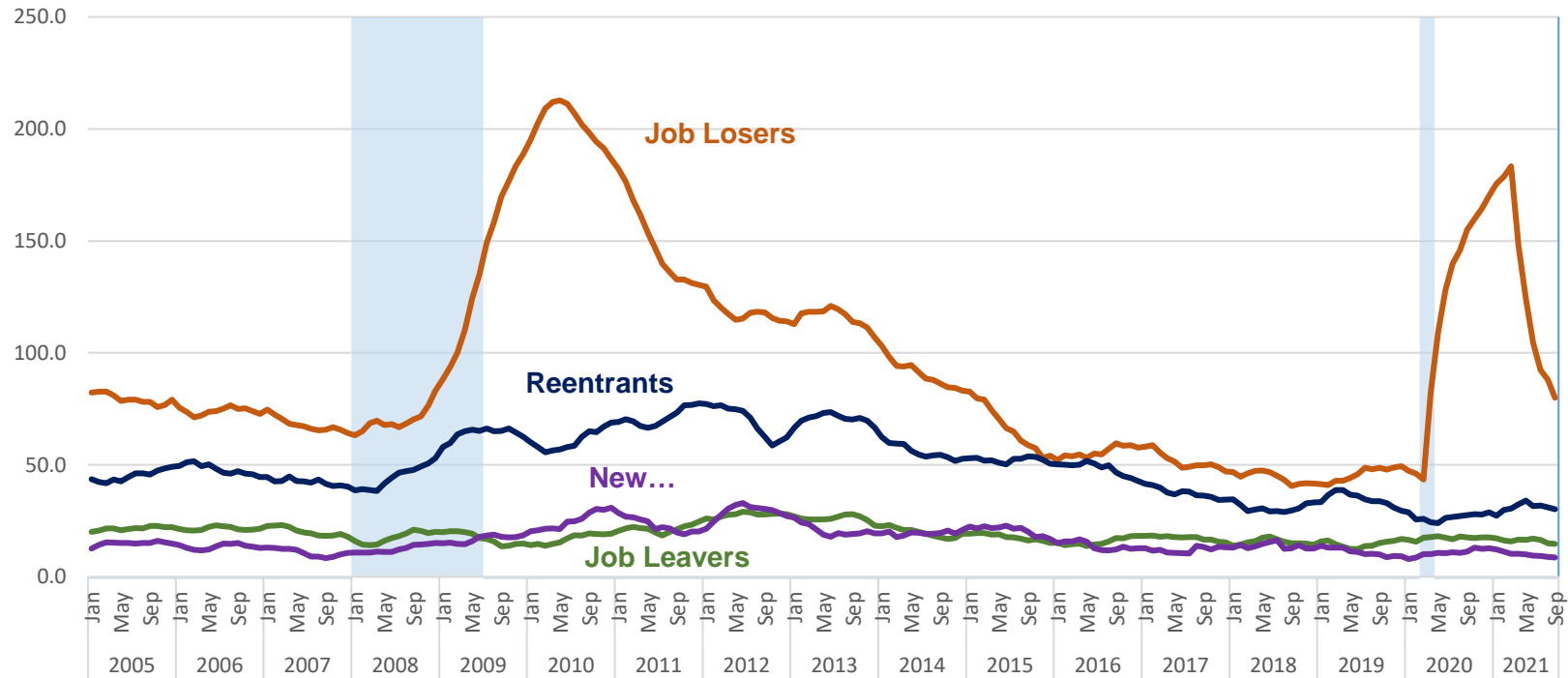
Table 3a. Employment status of the civilian non-institutional population by sex, age, race, and Hispanic origin, 3rd Quarter, 2021 (based on CPS)

Third Quarter Labor Force 20+ by Gender and Race

	Civilian noninstitutional Labor Force participation rate	Rate
Male, All Races		
Age 20+	72.2%	3.8%
Female, All Races		
Age 20+	56.2%	3.1%
Male, White		
Age 20+	71.2%	3.0%
Female, White		
Age 20+	55.4%	2.7%
Male, Black		
Age 20+	76.9%	11.8%
Female, Black		
Age 20+	63.3%	8.4%
Male, Hispanic		
Age 20+	87.7%	6.9%
Female, Hispanic		
Age 20+	57.1%	2.7%

Table 3a. Employment status of the civilian non-institutional population by sex, age, race, and Hispanic origin, 3rd Quarter, 2021 (based on CPS)

Indiana Reasons for Unemployment 12 month moving average



Job Losers – includes two sub; People on temporary layoff and People not on temporary layoff.

Job Leavers - Job leavers are unemployed people who quit or otherwise voluntarily left their previous job and immediately began looking for new employment.

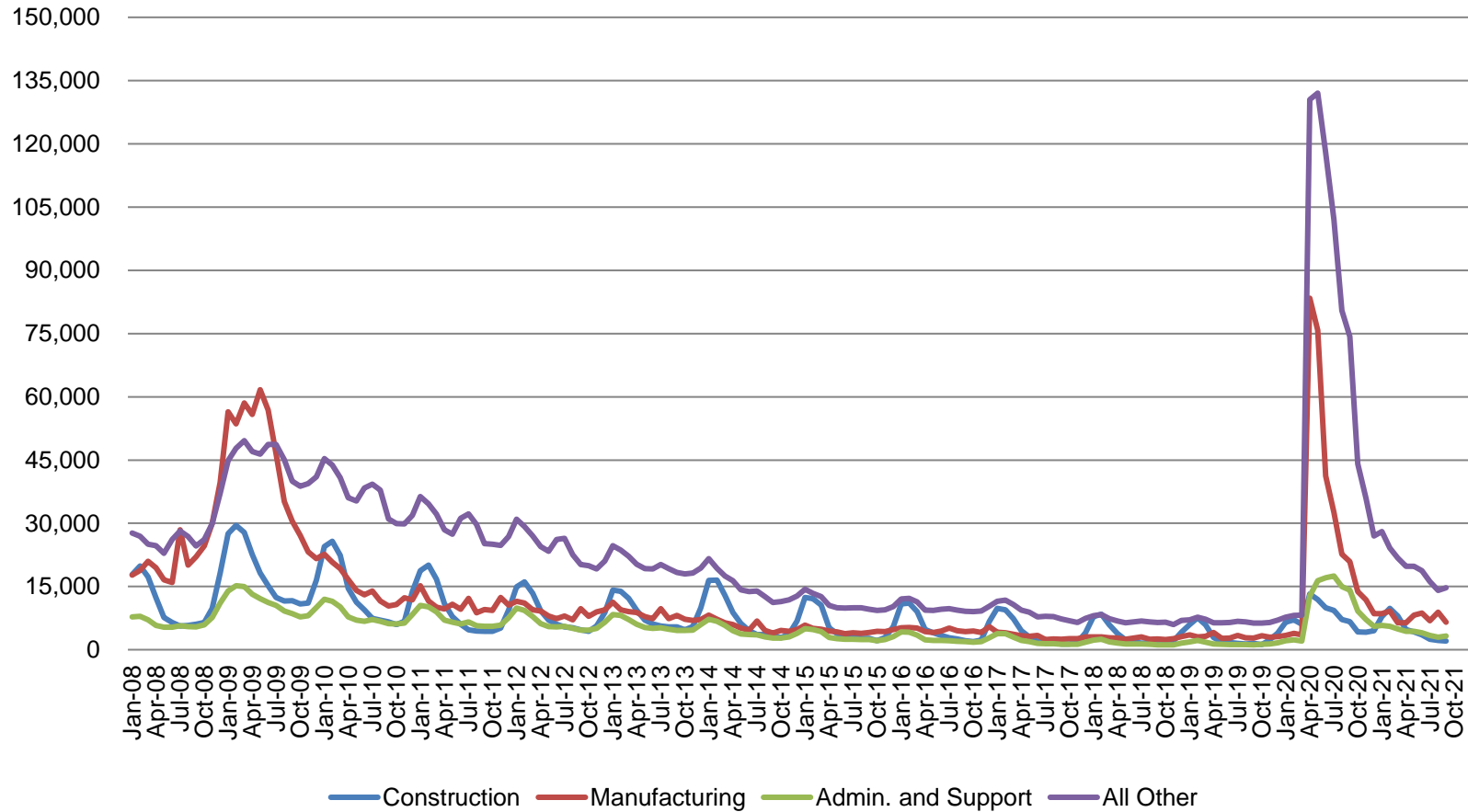
Reentrants - Reentrants are unemployed people who have past work experience but were not in the labor force for a period of time prior to beginning their current job search.

New Entrants - New entrants are unemployed people looking for their first job. They have no previous work experience.

Confidential & Deliberative

Regular UI Claims by Industry

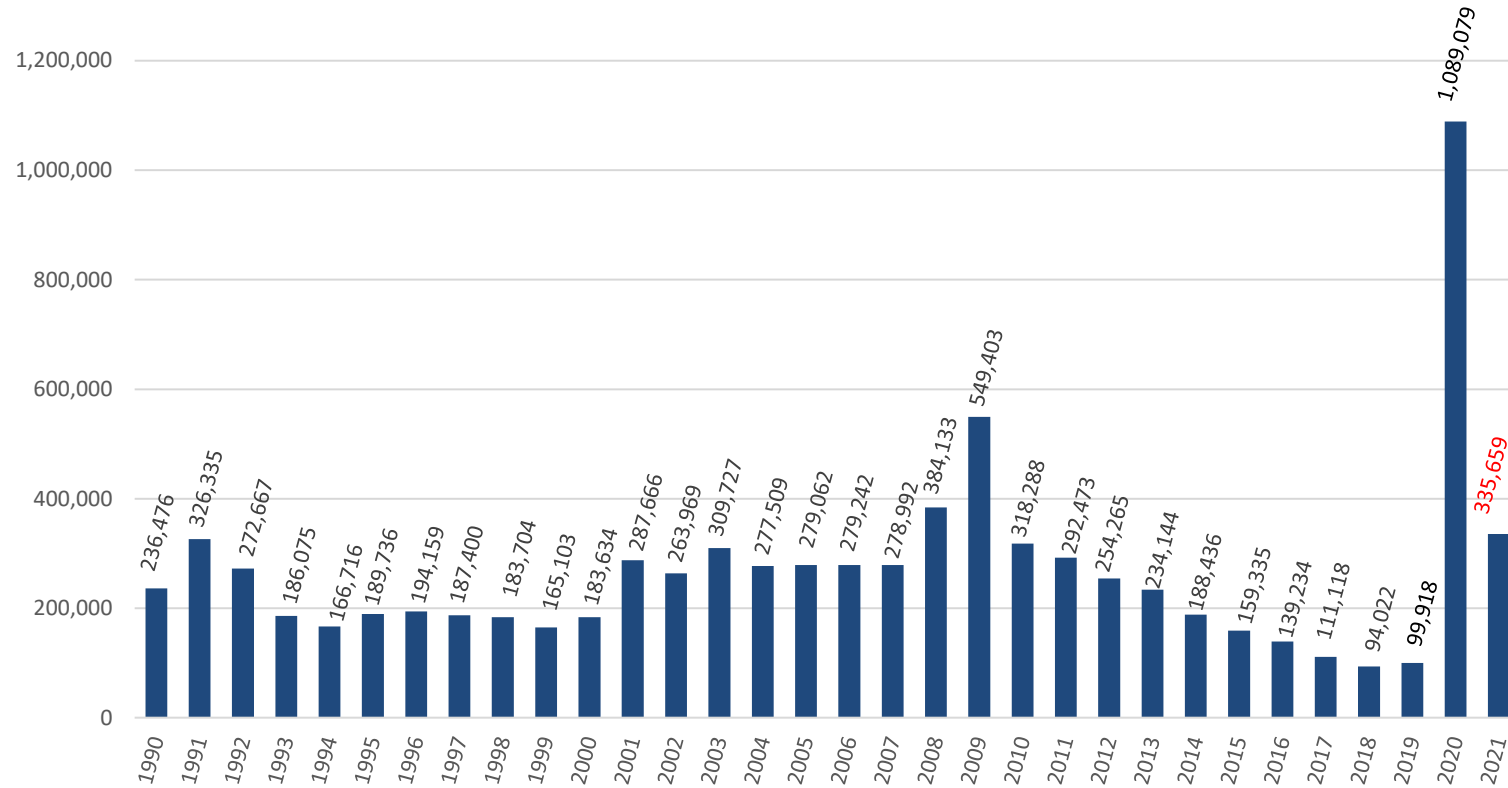
For the Reference Week of Each Month



Source: ETA 203

Weekly Initial Claims – Week 40

Total aggregated UI claims for the first 40 weeks of each year as reported to ETA.



Regular UI Claims

Reference Week (12th of the month) Input to LAUS Unemployment Rate Model

	2009	2013	2016	2017	2018	2019	2020	2021	OTM Change	OTY Change
JANUARY	150,888	63,223	36,555	33,137	24,968	21,808	23,526	66,640	15,003	43,114
FEBRUARY	154,388	60,183	36,909	32,463	25,879	23,992	25,050	53,498	(13,142)	28,448
MARCH	157,257	54,578	32,439	32,141	21,171	22,446	22,555	31,270	(22,228)	8,715
APRIL	143,842	48,548	23,895	21,998	17,618	17,914	264,727	41,529	10,259	(223,198)
MAY	141,174	42,997	22,300	19,431	14,774	14,411	256,319	42,848	1,319	(213,471)
JUNE	136,670	41,722	22,025	16,722	14,653	14,386	199,864	37,704	(5,144)	(162,160)
JULY	121,336	44,597	22,326	15,775	15,098	15,054	177,347	30,253	(7,451)	(147,094)
AUGUST	103,509	39,998	20,737	15,692	13,959	14,156	140,695	21,502	(8,751)	(119,193)
SEPTEMBER	92,680	39,563	19,372	14,334	12,981	13,620	127,098	28,794	7,292	(98,304)
OCTOBER	86,275	37,778	19,143	14,266	13,083	14,106	77,510			
NOVEMBER	82,451	38,517	19,547	14,347	15,499	14,274	61,772			
DECEMBER	91,814	42,484	24,599	17,345	16,693	16,816	51,637			

*Without earnings – Reference week claims

Purchasing Managers' Index (PMI)

- The Purchasing Managers Index (PMI) is a measure of the prevailing direction of economic trends in manufacturing.
- The PMI is based on a monthly survey of supply chain managers across 19 industries, covering both upstream and downstream activity.
- The value and movements in the PMI and its components can provide useful insight to business decision makers, market analysts, and investors, and is a leading indicator of overall economic activity in the U.S.

PMI is a number from 0 to 100. A PMI above 50 represents an expansion when compared with the previous month. A PMI reading under 50 represents a contraction.

Manufacturing at a Glance						
August-21						
Index	Series Index Sep	Series Index Aug	Percentage Point Change	Direction	Rate of Change	Trend* (Months)
Manufacturing PMI®	61.1	59.9	1.2	Growing	Faster	16
New Orders	66.7	66.7	0	Growing	Unchanged	16
Production	59.4	60.0	-0.6	Growing	Slower	16
Employment	50.2	49.0	1.2	Growing	From Contracting	1
Supplier Deliveries	73.4	69.5	3.9	Slowing	Faster	67
Inventories	55.6	54.2	1.4	Growing	Faster	2
Customers' Inventories						
Prices	81.2	79.4	1.8	Increasing	Faster	16
Backlog of Orders	64.8	68.2	-3.4	Growing	Slower	15
New Export Orders	53.4	56.6	-3.2	Growing	Slower	15
Imports	54.9	54.3	0.6	Growing	Faster	15
OVERALL ECONOMY				Growing	Faster	16
Manufacturing Sector				Growing	Faster	16
Manufacturing ISM® <i>Report On Business</i> ® data is seasonally adjusted for the New Orders, Production, Employment and Inventories indexes.						
*Number of months moving in current direction.						