

# Indiana's Employment and Labor Force Estimates October 2021

11/17/2021

Data is embargoed until 10 AM November 19, 2021

# Key Points

- **Indiana's unemployment rate is 3.3%. The U.S. is at 4.6%.**
- **Indiana's Labor Force is at 3,327,434.**
- Indiana's Labor Force decreased by 9,183 due to a decrease in employment of 2,153 and a decrease in unemployment of 7,030.
- Indiana's Labor Force has increased 10,572 over the year.
- Indiana's Labor Force Participation Rate is now at 62.7%. This is above the U.S. Labor Force Participation Rate of 61.6%.

*The Bureau of Labor Statistics discovered an immediate change needed to the unemployment rate model that will affect the East North Central Region, which includes Indiana. This is a result of model changes implemented by BLS due to the pandemic which caused a distortion. Other states affected include Michigan, Ohio, Illinois, and Wisconsin. The September unemployment and labor force participation rate will be revised downward to levels lower than previously anticipated. The October preliminary data will also reflect this change.*

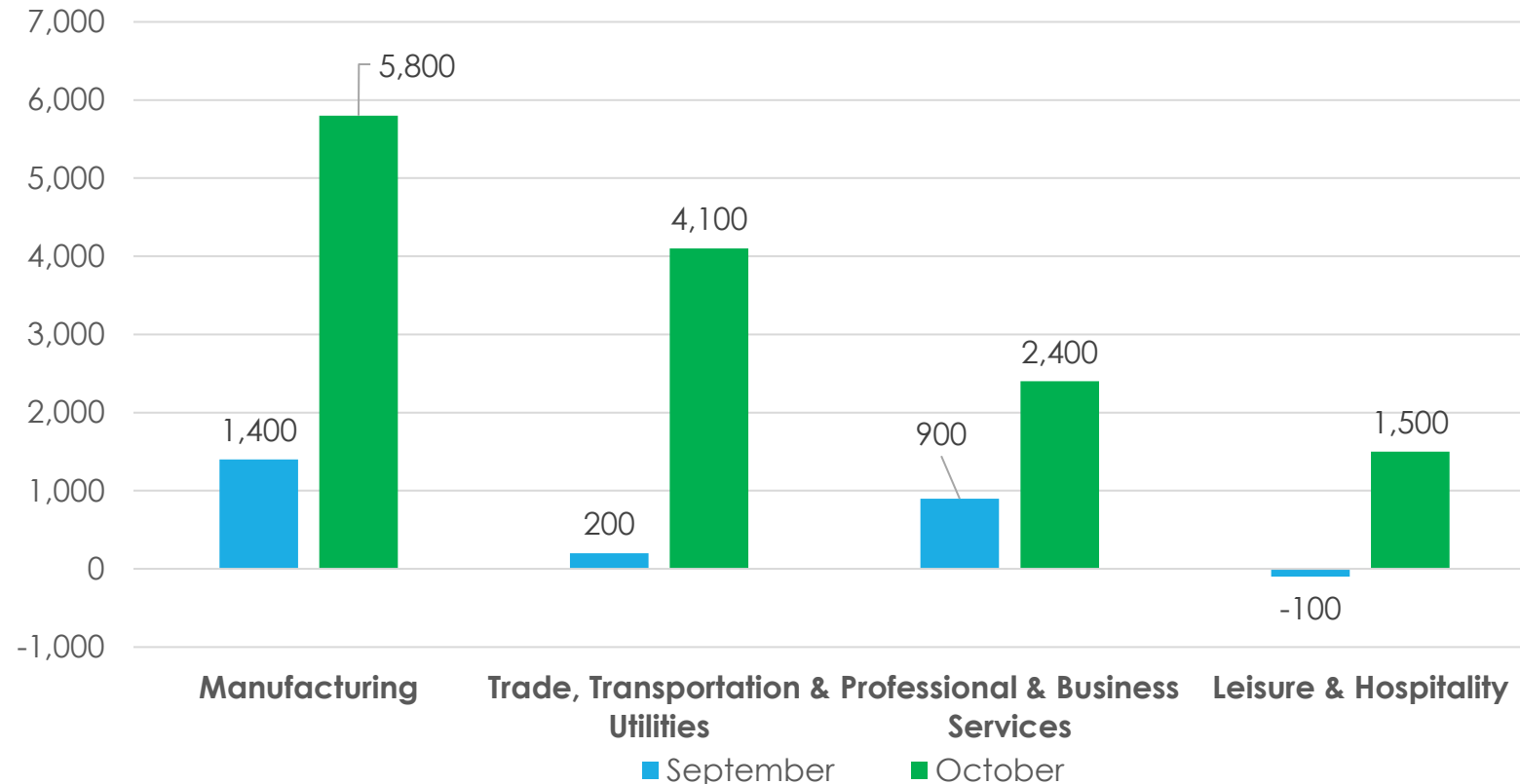
*For more information from BLS please use this link: <https://www.bls.gov/lau/launews1.htm>*

# Key Points: October 2021

## Indiana's Private Employment

- Increased by 14,600 jobs over the month and recovered 66,000 jobs over the year.
- October private employment = 2,670,500.

### Private Industry Employment



# Comparing Local Area Unemployment Statistics (LAUS) and Current Employment Statistics (CES)

## **LAUS** (Labor Force by Residence)

**This counts people, not jobs, and is...**

- An estimate of employment based on where the employee lives, rather than where they work
- Used in calculating the labor force

## **CES** (Employment by Job)

**This counts jobs, not people, and is...**

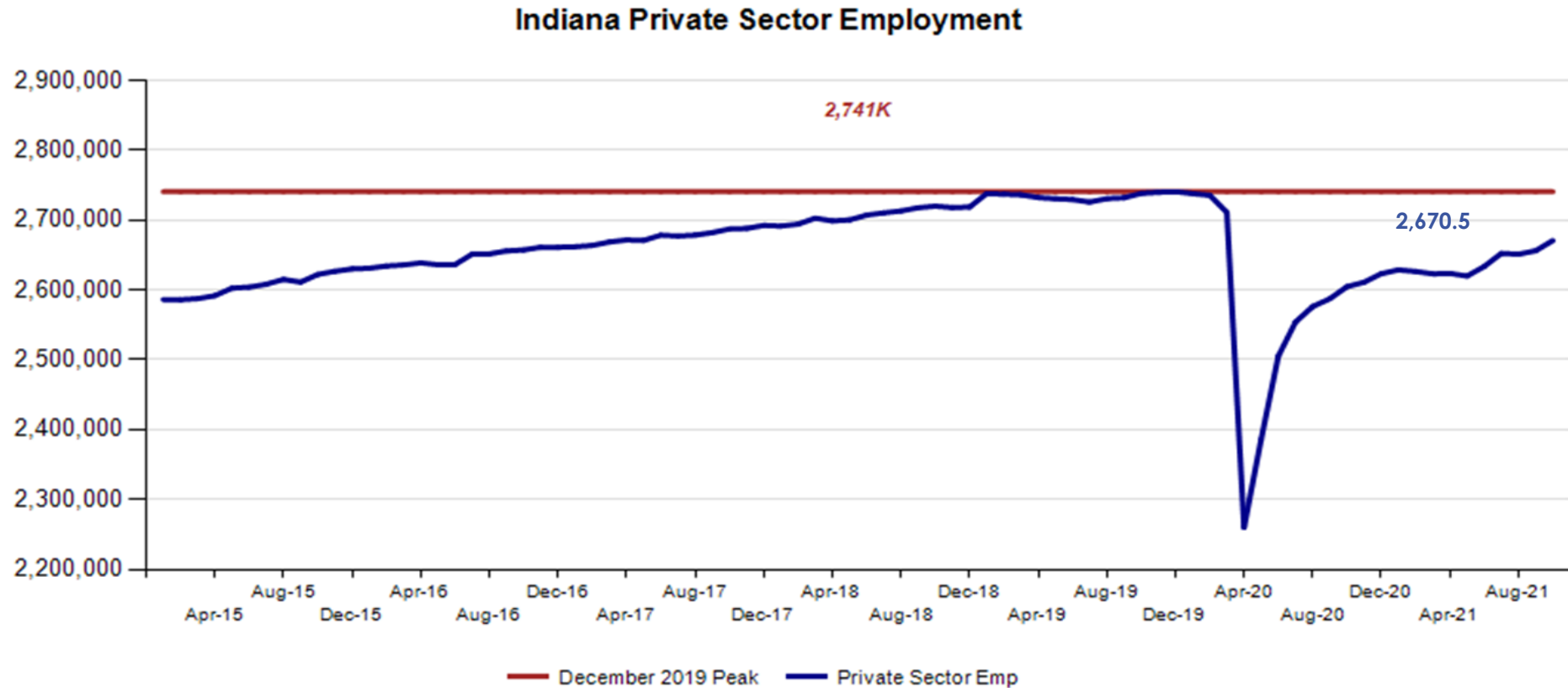
- An estimate of employment based on the location of the job regardless of the worker's residence
- Also called nonag wage and salary or nonfarm employment
- Used in Quarterly Census of Employment and Wages (QCEW), Occupational Employment Statistics (OES) and CES data

# CES Monthly Jobs Report

Revisions to SEPTEMBER 2021 Estimates						
INDUSTRY TITLE	Aug	Sep Prel	Sep Rev	Revision	Chg from Aug	Pre Chg from Aug
Total Nonfarm	3061.9	3058.8	3064.4	5.6	2.5	-3.1
Total Private	2651.0	2650.7	2655.9	5.2	4.9	-0.3
Goods Producing	683.4	683.4	685.6	2.2	2.2	0.0
Service-Providing	2378.5	2375.4	2378.8	3.4	0.3	-3.1
Private Service Providing	1967.6	1967.3	1970.3	3.0	2.7	-0.3
Construction	144.8	143.4	143.8	0.4	-1.0	-1.4
Manufacturing	533.1	534.5	536.3	1.8	3.2	1.4
Trade, Transportation, and Utilities	605.9	606.1	607.3	1.2	1.4	0.2
Wholesale Trade	118.1	116.2	116.5	0.3	-1.6	-1.9
Retail Trade	315.8	318.4	319.2	0.8	3.4	2.6
Transportation, Warehousing, and Utilities	172.0	171.5	171.6	0.1	-0.4	-0.5
Information	24.9	25.1	25.1	0.0	0.2	0.2
Financial Activities	139.0	138.7	139.1	0.4	0.1	-0.3
Finance and Insurance	106.1	105.8	106.1	0.3	0.0	-0.3
Real Estate and Rental and Leasing	32.9	32.9	33.0	0.1	0.1	0.0
Professional and Business Services	326.8	327.7	328.7	1.0	1.9	0.9
Professional, Scientific, and Technical Services	129.5	130.8	131.3	0.5	1.8	1.3
Management of Companies and Enterprises	37.1	37.1	37.2	0.1	0.1	0.0
Admin & Support & Waste Mgmt & Remediation Services	160.2	159.8	160.2	0.4	0.0	-0.4
Education and Health Services	471.7	471.0	470.6	-0.4	-1.1	-0.7
Educational Services	60.1	58.1	58.1	0.0	-2.0	-2.0
Health Care and Social Assistance	411.6	412.9	412.5	-0.4	0.9	1.3
Leisure and Hospitality	284.5	284.4	284.6	0.2	0.1	-0.1
Other Services	114.8	114.3	114.9	0.6	0.1	-0.5
Government	410.9	408.1	408.5	0.4	-2.4	-2.8

# Indiana Private Sector Employment

October 2021 total private employment is 70,000 below the December 2019 pre-pandemic peak.



# Indiana Private Sector Employment Change

**October 2021 increased by 14,600 jobs over the month and is up 66,000 jobs over the year.**

IN Employment Change Over the Month, Year-to-Date and Over the Year (seasonally adjusted)

Industry	October 2020	December 2020	September 2021	October 2021	Month Change	Y-to-D Change	Y-to-Y Change
Private Educational & Health Services	461.0	461.3	470.6	469.6	-1.0	8.3	8.6
.....Private Educational Services	52.6	51.8	58.1	57.7	-0.4	5.9	5.1
.....Health Care & Social Assistance	408.4	409.5	412.5	411.9	-0.6	2.4	3.5
Manufacturing	514.2	519.5	536.3	542.1	5.8	22.6	27.9
Professional & Business Services	328.4	333.9	328.7	331.1	2.4	-2.8	2.7
Financial Activities	139.2	141.0	139.1	139.8	0.7	-1.2	0.6
Construction	146.3	150.3	143.8	145.1	1.3	-5.2	-1.2
Leisure and Hospitality	272.4	270.7	284.6	286.1	1.5	15.4	13.7
Trade, Transportation & Utilities	600.9	605.1	607.3	611.4	4.1	6.3	10.5
.....Trade	430.5	433.1	435.7	439.2	3.5	6.1	8.7
.....Transportation, Warehousing & Utilities	170.4	172.0	171.6	172.2	0.6	0.2	1.8
All Other	142.1	141.3	145.5	145.3	-0.2	4.0	3.2
Total Private	2,604.5	2,623.1	2,655.9	2,670.5	14.6	47.4	66.0
Government (Includes Public Schools & Hospitals)	409.2	401.7	408.5	408.7	0.2	7.0	-0.5
Total Nonfarm	3,013.7	3,024.8	3,064.4	3,079.2	14.8	54.4	65.5
United States Total Private	120,962.0	121,047.0	125,789.0	126,393.0	604.0	5,346.0	5,431.0

- **Manufacturing recovered 5,800** jobs over the month.
- **Trade, Transportation & Utilities 4,100** recovered jobs over the month.

Source: Current Employment Statistics (seasonally adjusted)

For month to month change, [visit this link](#).



# Indiana Private Sector Employment Change From Peak and Trough

**October 2021 estimates show Indiana private jobs decreased 70,000 since December 2019.**

IN Statewide Estimates (seasonally adjusted) -- October 2021

Supersector	Private Empl. Peak December 2019	Private Empl. Trough April 2020	September 2021	October 2021	Change Since Peak	Change Since Trough	Month to Month Change
Private Educational & Health Services	483.4	435.0	470.6	469.6	-13.8	34.6	-1.0
.....Private Educational Services	62.9	51.0	58.1	57.7	-5.2	6.7	-0.4
.....Health Care & Social Assistance	420.5	384.0	412.5	411.9	-8.6	27.9	-0.6
Manufacturing	537.7	421.4	536.3	542.1	4.4	120.7	5.8
Professional & Business Services	346.9	297.8	328.7	331.1	-15.8	33.3	2.4
Financial Activities	143.0	137.8	139.1	139.8	-3.2	2.0	0.7
Construction	147.3	132.7	143.8	145.1	-2.2	12.4	1.3
Leisure and Hospitality	314.7	178.0	284.6	286.1	-28.6	108.1	1.5
Trade, Transportation & Utilities	604.9	542.3	607.3	611.4	6.5	69.1	4.1
.....Trade	439.4	386.1	435.7	439.2	-0.2	53.1	3.5
.....Transportation, Warehousing & Utilities	165.5	156.2	171.6	172.2	6.7	16.0	0.6
All Other	162.6	114.9	145.5	145.3	-17.3	30.4	-0.2
Total Private	2,740.5	2,259.9	2,655.9	2,670.5	-70.0	410.6	14.6
Government (Includes Public Schools & Hospitals)	427.8	404.6	408.5	408.7	-19.1	4.1	0.2
Total Nonfarm	3,168.3	2,664.5	3,064.4	3,079.2	-89.1	414.7	14.8
United States Total Private	129,190.0	108,335.0	125,789.0	126,393.0	-2,797.0	18,058.0	604.0

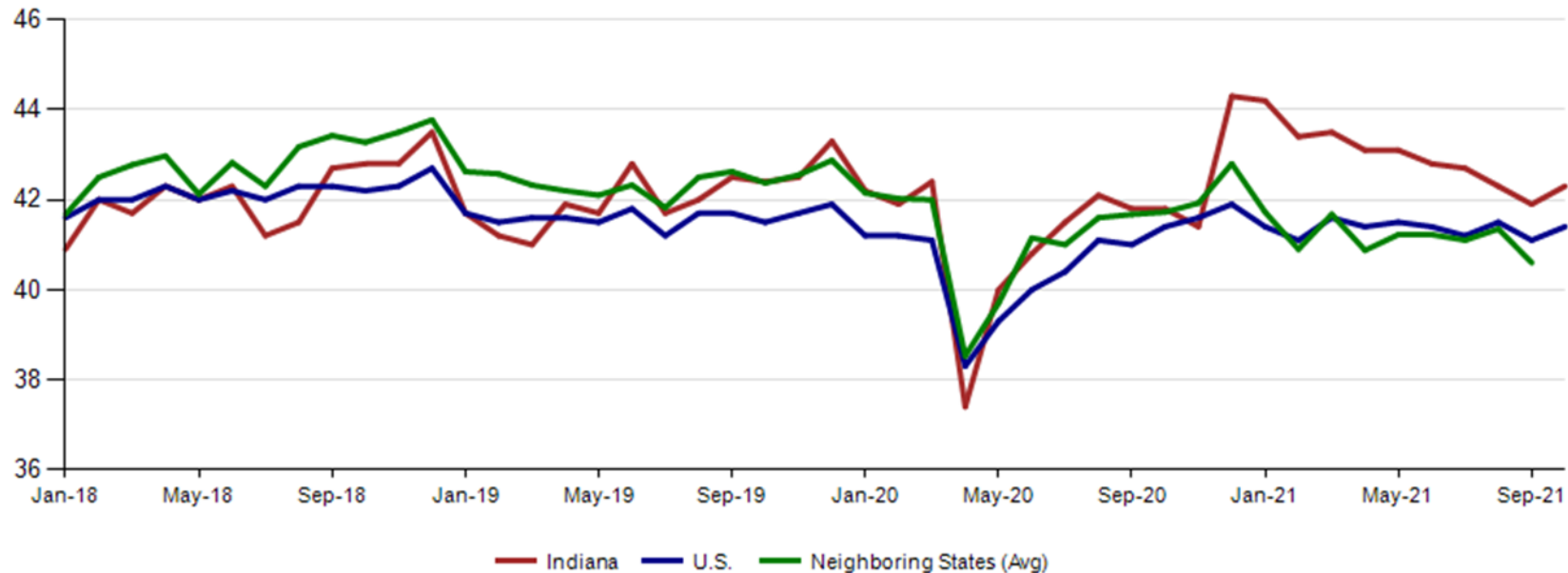
Source: Current Employment Statistics (seasonally adjusted)

For historical data, [visit this link.](#)

## Avg. Weekly Manufacturing Production Hours

**October 2021 average weekly hours for Indiana manufacturing production hours increased by 0.4 hours to 42.3 hours. National manufacturing hours increased 0.3 hours to 41.4 weekly hours, and Midwest states decreased at 0.8 hours to 40.6 hours (September 2021 data).**

Avg. Weekly Manufacturing Production Hours (non seasonally adjusted)



# Monthly Labor Force Report

*Gen5 STARS Monthly Estimation Tables, Official  
Indiana, 2021*

*Table 1: Year-to-Date Benchmarked Model Estimates*

*Table 1a: Smoothed Seasonally Adjusted*

*(SSA Est. appear as the seasonally adjusted in BLS and State official publications and databases)*

Month	Labor Force		Employment		Unemployment		
	Level	LFP	Level	EP	Level	Rate	Error Range <sup>+</sup>
JAN	3,347,810	63.3	**3,206,431	**60.7	**141,379	**4.2	3.5- 4.9
FEB	3,342,841	63.2	3,208,912	60.7	**133,929	**4.0	3.3- 4.7
MAR	3,336,773	63.1	3,206,627	60.6	130,146	3.9	3.2- 4.6
APR	3,337,128	63.1	3,205,827	60.6	131,301	3.9	3.2- 4.7
MAY	3,344,131	63.2	3,208,953	60.6	135,178	4.0	3.3- 4.8
JUN	3,347,800	63.2	3,209,313	60.6	138,487	4.1	3.4- 4.8
JUL	3,346,157	63.2	3,208,084	60.6	138,073	4.1	3.4- 4.8
AUG	3,342,971	63.1	3,205,534	60.5	137,437	4.1	3.4- 4.8
SEP	3,336,617	62.9	* 3,219,412	60.7	**117,205	**3.5	2.8- 4.2
OCT	3,327,434	62.7	3,217,259	60.6	**110,175	**3.3	2.7- 4.0

Statewide labor force estimates are calculated using the State Time-series Analysis and Review System (**STARS**) developed and approved by **BLS**.

*Gen5 STARS Monthly Estimation Tables, Official  
Indiana, 2021*

*Table 1b: Not Seasonally Adjusted*

Month	Labor Force		Employment		Unemployment		
	Level	LFP	Level	EP	Level	Rate	Error Range <sup>+</sup>
JAN	3,336,057	63.1	3,179,450	60.1	156,607	4.7	3.8- 5.6
FEB	* 3,300,840	* 62.4	* 3,145,013	* 59.5	155,827	4.7	3.8- 5.6
MAR	3,295,778	62.3	3,142,534	59.4	153,244	4.6	3.7- 5.6
APR	3,328,155	62.9	**3,187,431	**60.2	140,724	4.2	3.4- 5.1
MAY	* 3,366,515	* 63.6	3,214,443	60.7	152,072	4.5	3.7- 5.4
JUN	3,384,905	63.9	3,225,202	60.9	159,703	4.7	3.9- 5.5
JUL	3,354,296	63.3	3,211,640	60.6	142,656	4.3	3.5- 5.1
AUG	3,331,182	62.8	3,196,564	60.3	134,618	4.0	3.2- 4.8
SEP	3,313,470	62.5	3,219,966	60.7	**93,504	**2.8	2.1- 3.6
OCT	3,313,120	62.4	3,230,166	60.9	82,954	2.5	1.8- 3.2

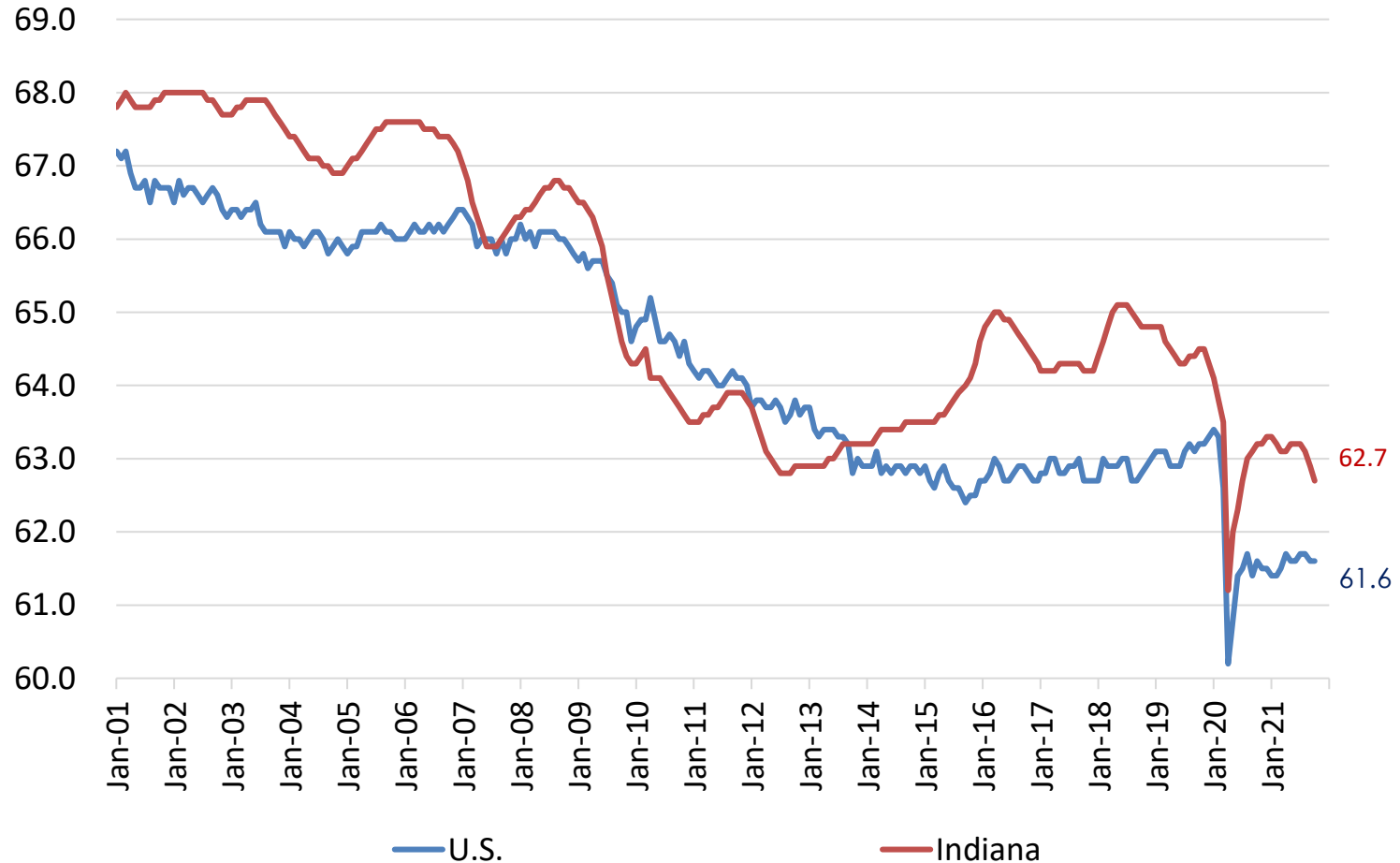
## Jobs Data for October 2021

Month NSA	Labor Force	Employed	Unemployed	IN Rate	Total NonFarm	Total Private	Regular UI Claims
Dec-16	3,288,829	3,164,196	124,633	3.8	3,112,000	2,672,400	24,599
Oct-21	3,313,120	3,230,166	82,954	2.5	3,110,100	2,690,900	19,993
Change	24,291	65,970	(41,679)	(1.3)	(1,900)	18,500	(4,606)

Month SA	Labor Force	Employed	Unemployed	IN Rate	Total NonFarm	Total Private	Regular UI Claims
Dec-16	3,317,083	3,185,941	131,142	4.0	3,086,600	2,661,000	24,599
Oct-21	3,327,434	3,217,259	110,175	3.3	3,079,200	2,670,500	19,993
Change	10,351	31,318	(20,967)	(0.7)	(7,400)	9,500	(4,606)

## Indiana Labor Force Participation Rate Compared to U.S.

Indiana is at 62.7% compared to the U.S. at 61.6%



## Midwest Comparison Rates: Seasonally Adjusted Over the Year and Over the Month

	Oct-20	Sep-21	Oct-21	Monthly change	Yearly change
Indiana	5.6%	3.5%	3.3%	-0.2%	-2.3%
U.S.	6.9%	4.8%	4.6%	-0.2%	-2.3%
Illinois	8.1%	6.2%	6.0%	-0.2%	-2.1%
Kentucky	5.5%	4.3%	4.2%	-0.1%	-1.3%
Michigan	8.1%	6.3%	6.1%	-0.2%	-2.0%
Minnesota	5.3%	3.7%	3.5%	-0.2%	-1.8%
Ohio	5.6%	5.3%	5.1%	-0.2%	-0.5%
Wisconsin	4.8%	3.4%	3.2%	-0.2%	-1.6%

\*2020 Benchmark

Confidential & Deliberative



## Alternative Measures of Labor Underutilization 4<sup>th</sup> Quarter of 2020 through 3<sup>rd</sup> Quarter of 2021 Averages

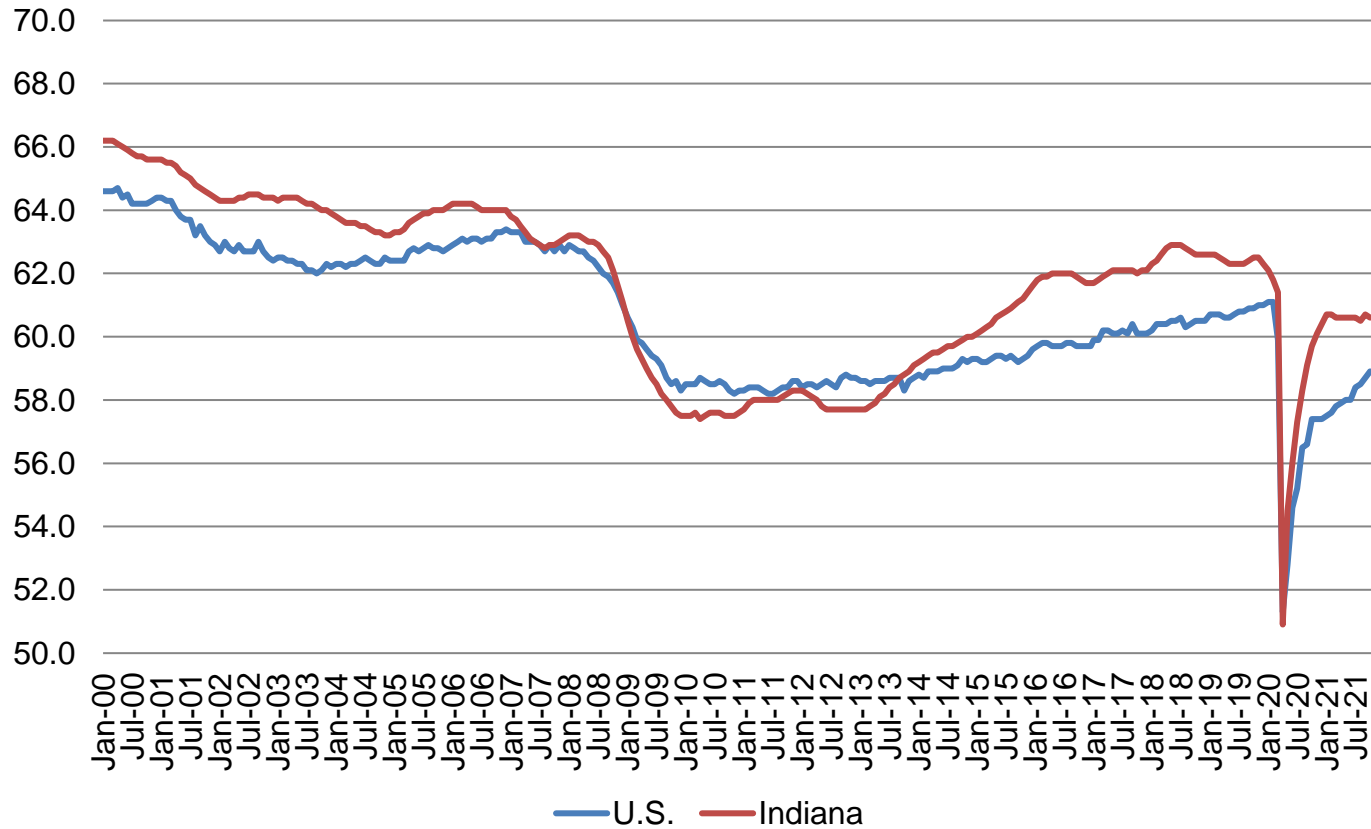
	U-1	U-2	U-3	U-4	U-5	U-6
Illinois	3.8	4.5	6.7	6.9	7.7	11.0
Indiana	1.9	3.0	4.5	4.6	5.2	7.5
Kentucky	1.8	3.0	5.0	5.2	6.0	8.0
Michigan	3.4	3.9	6.4	6.7	7.6	10.6
Minnesota	2.4	2.9	4.2	4.3	5.1	7.2
Ohio	2.4	3.2	5.4	5.7	6.5	9.5
Wisconsin	2.1	3.0	4.3	4.5	5.0	7.5
United States	3.2	3.8	6.3	6.7	7.4	11.2

The six state measures are based on the same definitions as those published for the U.S.:

- U-1, persons unemployed 15 weeks or longer, as a percent of the civilian labor force;
- U-2, job losers and persons who completed temporary jobs, as a percent of the civilian labor force;
- U-3, total unemployed, as a percent of the civilian labor force (this is the definition used for the official unemployment rate);
- U-4, total unemployed plus discouraged workers, as a percent of the civilian labor force plus discouraged workers;
- U-5, total unemployed, plus discouraged workers, plus all other marginally attached workers, as a percent of the civilian labor force plus all marginally attached workers; and
- U-6, total unemployed, plus all marginally attached workers, plus total employed part time for economic reasons, as a percent of the civilian labor force plus all marginally attached workers.

**The Indiana Employment to Population Ratio ( age 16+ non-institutionalized) for October 2021 is 60.6% compared to the U.S. at 58.9% and border states at 57.3% (September)**

**Employment to Population Ratio**



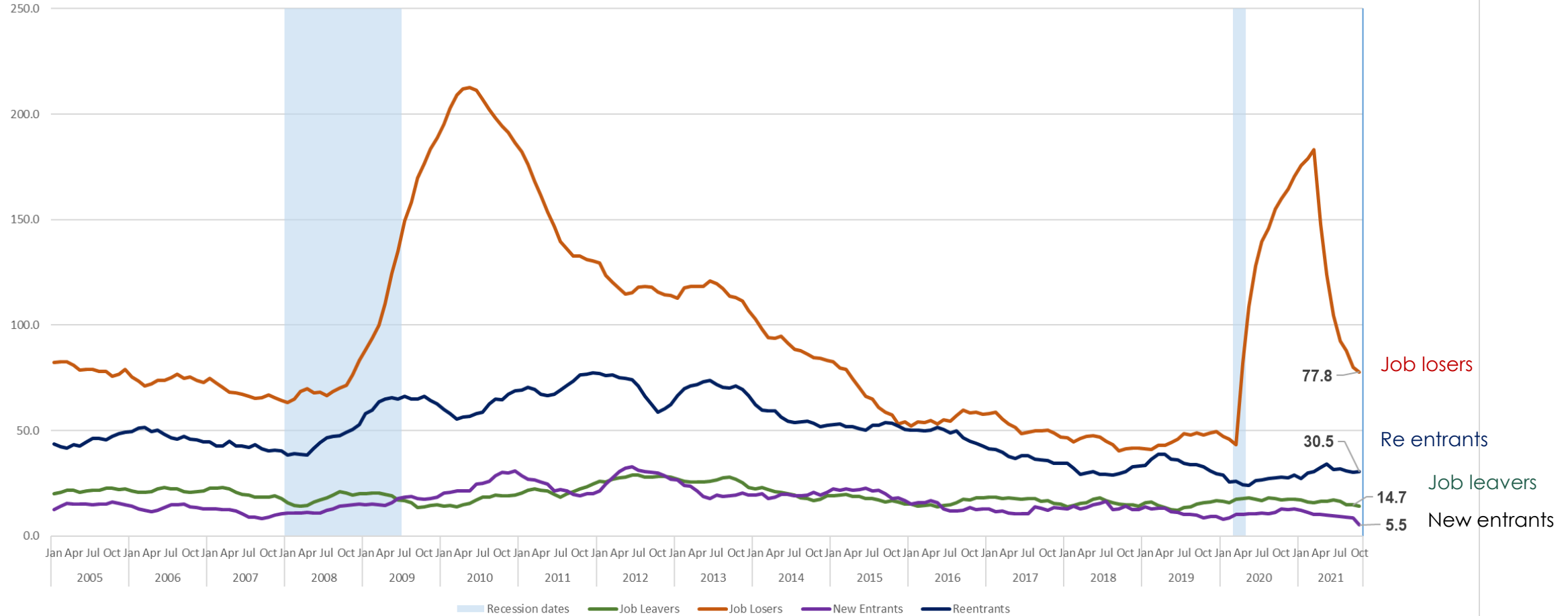
## Indiana: Labor Force by Gender and Age

November 2020 – October 2021  
Current Population Survey, Bureau of  
Labor Statistics (in 1000s)

	Civilian labor force participation rate	Unemployment rate
<b>Both Sexes</b>		
<b>All Races</b>		
Age 16+	62.7	4.3
Age 16-19	43.1	8.4
Age 20+	64.2	4.1
<b>White</b>		
Age 16+	62.6	3.8
Age 16-19	43.1	8.3
Age 20+	63.9	3.6
<b>Black</b>		
Age 16+	62.1	9.1
Age 16-19	38.7	11.2
Age 20+	64.1	9.0
<b>Hispanic</b>		
Age 16+	68.3	4.4
Age 16-19	42.3	12.6
Age 20+	72.2	3.7
<b>Male, All Races</b>		
Age 16+	69.7	4.6
Age 20+	71.8	4.4
<b>Female, All Races</b>		
Age 16+	56.1	3.9
Age 20+	57.0	3.6
<b>Male, White</b>		
Age 16+	69.4	4.1
Age 20+	71.2	3.9
<b>Female, White</b>		
Age 16+	56.1	3.4
Age 20+	57.0	3.2
<b>Male, Black</b>		
Age 16+	71.0	10.0
Age 20+	73.5	9.7
<b>Female, Black</b>		
Age 16+	54.6	8.0
Age 20+	56.2	8.2

Source: Table a. Employment status of the civilian non-institutional population by sex, age, race, and Hispanic origin, November 2020 - October 2021 (based on CPS) (Numbers in thousands)

### Indiana Reasons for Unemployment 12 month moving average



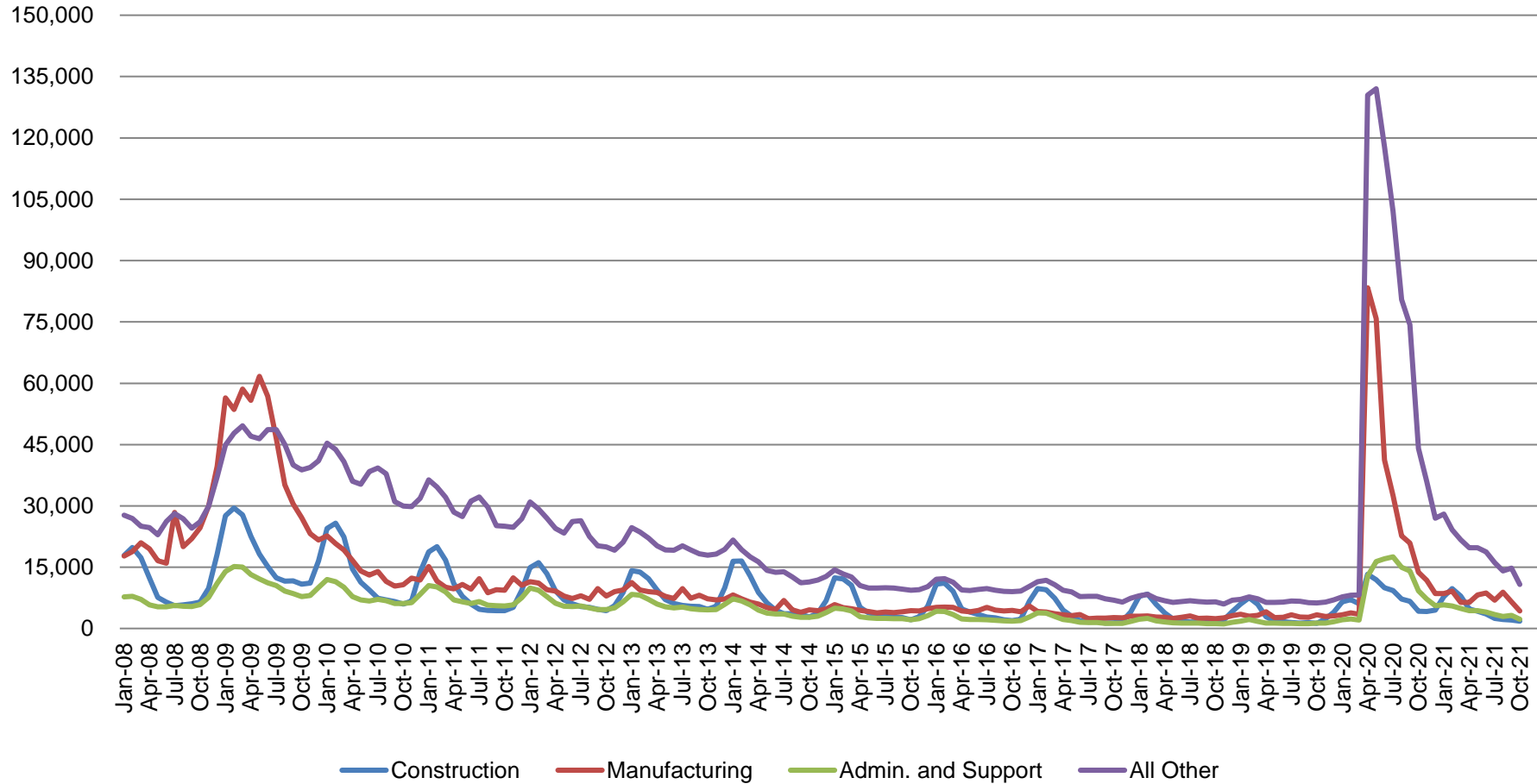
## Out of the Labor Force October 2021 Compared to March 2020

	Mar-20	Oct-21	Mar-20	Oct-21	Mar-20	Oct-21	Mar-20	Oct-21	Mar-20	Oct-21
	Total	Total	25 to 54	25 to 54	55 Years and over	55 Years and Over	Men	Men	Women	Women
<b>Not in Labor Force</b>	1,874.7	1,974.4	421.7	471.4	1,140.3	1,180.0	745.9	778.2	1,128.7	1,196.2
<b>Do not want a job now</b>	1,779.6	1,873.1	389.0	419.6	1,109.7	1,152.7	700.2	727.2	1,079.4	1,145.8
<b>Want a job</b>	95.1	101.3	32.7	51.8	30.6	27.3	45.7	50.9	49.4	50.4
<b>Did not search for work in previous year</b>	62.4	67.0	17.6	29.8	23.3	23.9	27.7	35.0	34.7	32.0
<b>Searched for job in previous year</b>	32.7	34.3	15.1	22.0	7.3	3.4	18.0	15.9	14.7	18.4
<b>Not available to work now</b>	8.3	9.9	3.7	7.3	1.0	0.5	4.1	3.8	4.2	6.1
<b>Available to work now</b>	24.4	24.5	11.4	14.7	6.3	2.8	14.0	12.1	10.5	12.3
<b>Reason for not looking</b>										
<b>Discouragement over job prospects</b>	8.8	5.7	4.0	2.8	3.5	0.6	6.0	2.2	2.8	3.5
<b>Reasons other than discouragement</b>	15.6	18.8	7.4	11.9	2.8	2.3	8.0	9.9	7.6	8.8

October 2021 data Table b. Civilians not in the labor force by sex and age, October 2020 - September 2021 (based on CPS) March 2020 data-Table b. Civilians not in the labor force by sex and age, April 2019 - March 2020 (based on CPS)

## Regular UI Claims by Industry

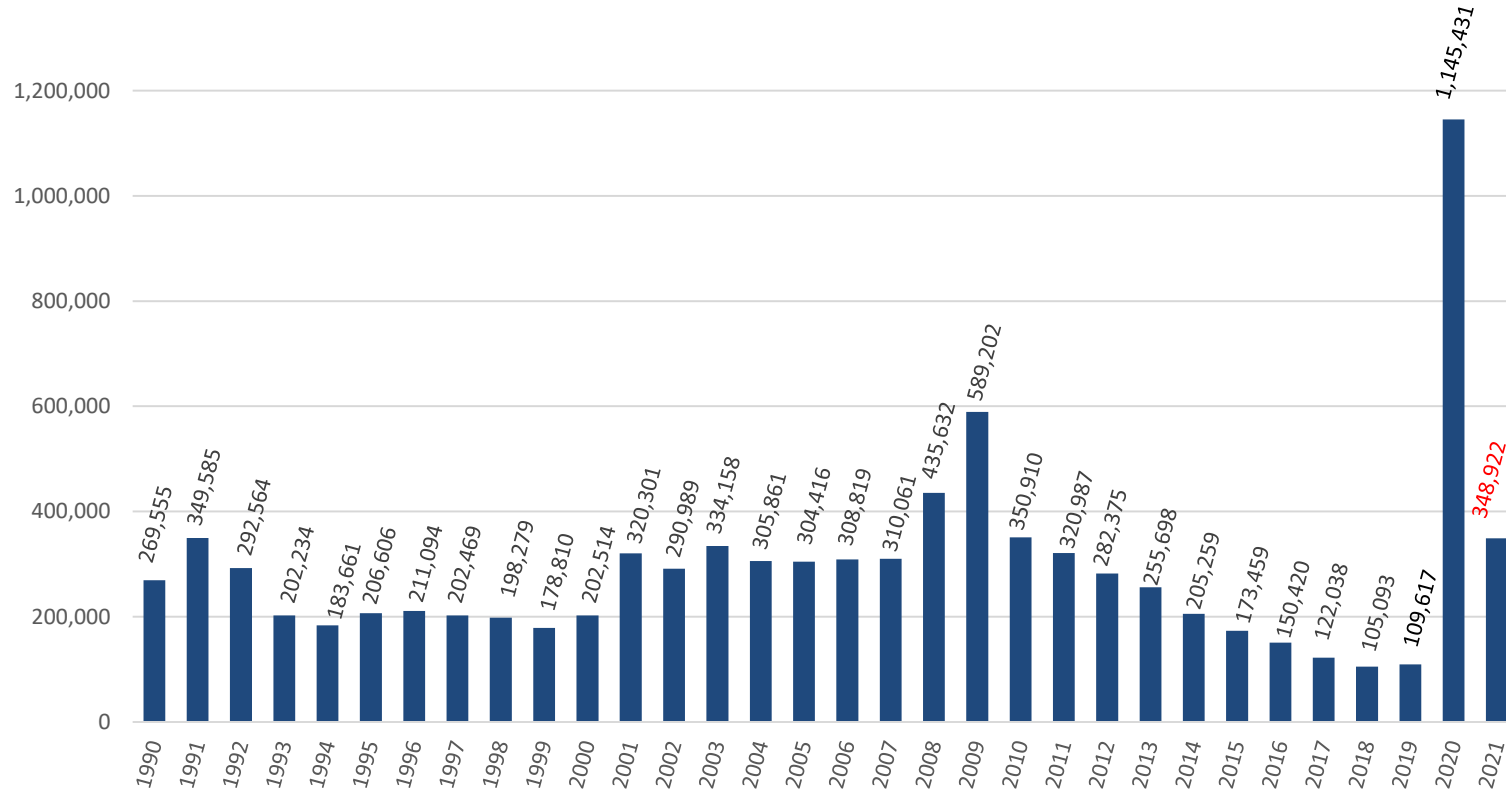
For the Reference Week of Each Month



Source: ETA 203

## Weekly Initial Claims – Week 44

Total aggregated UI claims for the first 44 weeks of each year as reported to ETA.



## Regular UI Claims

Reference Week (12th of the month) Input to LAUS Unemployment Rate Model

	2009	2013	2016	2017	2018	2019	2020	2021	OTM Change	OTY Change
JANUARY	150,888	63,223	36,555	33,137	24,968	21,808	23,526	66,640	15,003	43,114
FEBRUARY	154,388	60,183	36,909	32,463	25,879	23,992	25,050	53,498	(13,142)	28,448
MARCH	157,257	54,578	32,439	32,141	21,171	22,446	22,555	31,270	(22,228)	8,715
APRIL	143,842	48,548	23,895	21,998	17,618	17,914	264,727	41,529	10,259	(223,198)
MAY	141,174	42,997	22,300	19,431	14,774	14,411	256,319	42,848	1,319	(213,471)
JUNE	136,670	41,722	22,025	16,722	14,653	14,386	199,864	37,704	(5,144)	(162,160)
JULY	121,336	44,597	22,326	15,775	15,098	15,054	177,347	30,253	(7,451)	(147,094)
AUGUST	103,509	39,998	20,737	15,692	13,959	14,156	140,695	21,502	(8,751)	(119,193)
SEPTEMBER	92,680	39,563	19,372	14,334	12,981	13,620	127,098	30,725	9,223	(96,373)
OCTOBER	86,275	37,778	19,143	14,266	13,083	14,106	77,510	19,993	(10,732)	(57,517)
NOVEMBER	82,451	38,517	19,547	14,347	15,499	14,274	61,772			
DECEMBER	91,814	42,484	24,599	17,345	16,693	16,816	51,637			

\*Without earnings – Reference week claims



## Purchasing Managers' Index (PMI)

- The Purchasing Managers Index (PMI) is a measure of the prevailing direction of economic trends in manufacturing.
- The PMI is based on a monthly survey of supply chain managers across 19 industries, covering both upstream and downstream activity.
- The value and movements in the PMI and its components can provide useful insight to business decision makers, market analysts, and investors, and is a leading indicator of overall economic activity in the U.S.

PMI is a number from 0 to 100. A PMI above 50 represents an expansion when compared with the previous month. A PMI reading under 50 represents a contraction.

MANUFACTURING AT A GLANCE						
October 2021						
Index	Series Index	Series Index	Percentage	Direction	Rate of Change	Trend* (Months)
	Oct	Sep	Point			
			Change			
Manufacturing PMI®	60.8	61.1	-0.3	Growing	Slower	17.0
New Orders	59.8	66.7	-6.9	Growing	Slower	17.0
Production	59.3	59.4	-0.1	Growing	Slower	17.0
Employment	52.0	50.2	1.8	Growing	Faster	2.0
Supplier Deliveries	75.6	73.4	2.2	Slowing	Faster	68.0
Inventories	57.0	55.6	1.4	Growing	Faster	3.0
Customers' Inventories	31.7	31.7	0.0	Too Low	Same	61.0
Prices	85.7	81.2	4.5	Increasing	Faster	17.0
Backlog of Orders	63.6	64.8	-1.2	Growing	Slower	16.0
New Export Orders	54.6	53.4	1.2	Growing	Faster	16.0
Imports	49.1	54.9	-5.8	Contracting	From Growing	1.0
OVERALL ECONOMY				Growing	Slower	17.0
Manufacturing Sector				Growing	Slower	17.0

## BLS JOLTS Program

The **Job Openings and Labor Turnover Survey (JOLTS)** program produces data on job openings, hires, and separations. For more information on this data go to <https://www.bls.gov/jlt/home.htm>

To access the data on the DWD Infogram use: <https://infogram.com/1plxwvxe1lgxknaqprp1y1pnj1szygya1j?live>

