

12/18/2019

# Indiana's Employment and Labor Force Estimates

*November 2019*

INDIANA  
DEPARTMENT OF  
**WORKFORCE**  
DEVELOPMENT

# Key Points: November 2019

## Unemployment Rate

- Indiana = 3.2%
- U.S. = 3.5%

*Indiana's rate is down 0.3% over the year from November 2018.*

## Indiana's Labor Force

- Over the month Labor Force increased 346 due to an increase in employment of 38 and an increase in unemployment of 308.
- Over the year, labor force decreased by 8,128.
- Indiana's labor force participation remained at 64.4%. This remains above the U.S. labor force participation rate of 63.2%.

*For historical labor force participation data, [visit this link](#).*



# Key Points: November 2019

## Indiana's Private Employment

- increased by 800 over the month and had gains of 8,100 over the year.
- November private employment = 2,731,800.



# Revisions to October 2019 Estimates

Revisions to October 2019 Estimates						
INDUSTRY TITLE	Sep	Oct Prel	Oct Rev	Revision	Chg from Sep	Pre Chg from Sep
Total Nonfarm	3165.4	3163.5	3161.1	-2.4	-4.3	-1.9
Total Private	2736.5	2734.5	2731.0	-3.5	-5.5	-2.0
Goods Producing	696.1	693.3	693.4	0.1	-2.7	-2.8
Service-Providing	2469.3	2470.2	2467.7	-2.5	-1.6	0.9
Private Service Providing	2040.4	2041.2	2037.6	-3.6	-2.8	0.8
Construction	151.2	152.5	152.4	-0.1	1.2	1.3
Manufacturing	538.6	534.6	534.8	0.2	-3.8	-4.0
Trade, Transportation, and Utilities	594.4	592.3	591.3	-1.0	-3.1	-2.1
Wholesale Trade	119.1	118.6	118.6	0.0	-0.5	-0.5
Retail Trade	317.1	316.5	316.0	-0.5	-1.1	-0.6
Transportation, Warehousing, and Utilities	158.2	157.2	156.7	-0.5	-1.5	-1.0
Information	27.8	27.8	27.6	-0.2	-0.2	0.0
Financial Activities	139.9	140.8	141.0	0.2	1.1	0.9
Finance and Insurance	104.3	104.8	105.4	0.6	1.1	0.5
Real Estate and Rental and Leasing	35.6	36.0	35.6	-0.4	0.0	0.4
Professional and Business Services	350.5	352.0	350.8	-1.2	0.3	1.5
Professional, Scientific, and Technical Services	123.5	123.6	124.1	0.5	0.6	0.1
Management of Companies and Enterprises	34.0	34.1	34.1	0.0	0.1	0.1
Admin & Support & Waste Mgmt & Remediation Services	193.0	194.3	192.6	-1.7	-0.4	1.3
Education and Health Services	492.6	491.6	490.8	-0.8	-1.8	-1.0
Educational Services	66.9	64.7	64.3	-0.4	-2.6	-2.2
Health Care and Social Assistance	425.7	426.9	426.5	-0.4	0.8	1.2
Leisure and Hospitality	304.7	306.8	305.8	-1.0	1.1	2.1
Other Services	130.5	129.9	130.3	0.4	-0.2	-0.6
Government	428.9	429.0	430.1	1.1	1.2	0.1



# Midwestern Sector Employment Change Compared to Indiana

*Percentage growth ranking comparison of Midwestern States and selected industry sectors since the Indiana low point. (October data)*

October	TNF	Private	Construction	Manufacturing	Professional & Business	Educational & Health Services
Illinois	33	33	43	30	30	36
Indiana	18	19	17	4	12	24
Kentucky	25	23	35	9	22	34
Michigan	17	17	11	2	18	49
Minnesota	23	24	8	24	39	28
Ohio	27	28	28	17	38	38
Wisconsin	35	36	18	22	28	42

- Since July 2009, three Midwestern States were among the top 10 in manufacturing growth over this time.

# Comparing Local Area Unemployment Statistics (LAUS) and Current Employment Statistics (CES)

## LAUS (Labor Force by Residence)

### This counts people, not jobs, and is...

- An estimate of employment based on where the employee lives, rather than where they work
- Used in calculating the labor force

## CES (Employment by Job)

### This counts jobs, not people, and is...

- An estimate of employment based on the location of the job regardless of the worker's residence
- Also called nonag wage and salary or nonfarm employment
- Used in Quarterly Census of Employment and Wages (QCEW), Occupational Employment Statistics (OES) and CES data

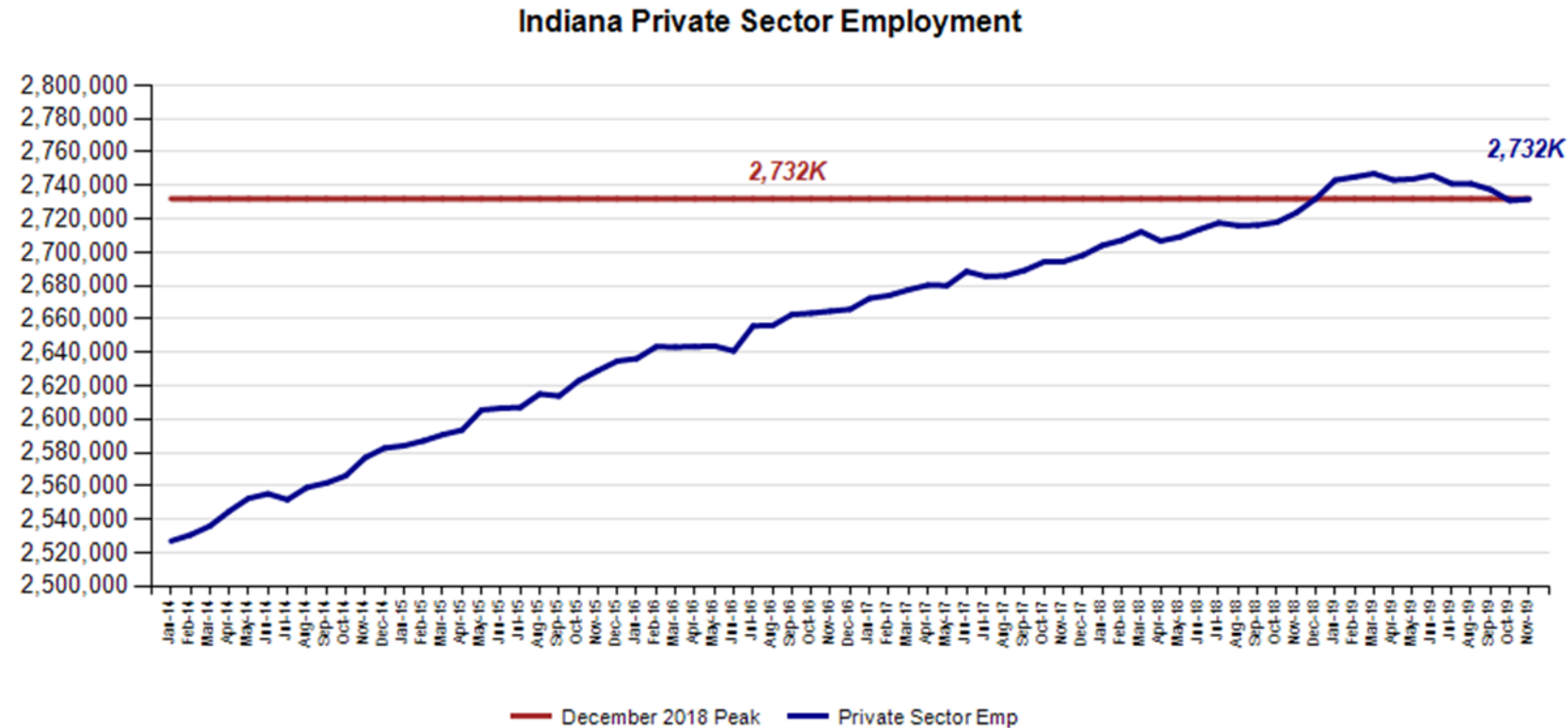
# CES Monthly Jobs Report

INDIANA  
DEPARTMENT OF  
**WORKFORCE**  
DEVELOPMENT

MONTHLY  
BRIEFING

# Indiana Private Sector Employment

*November total private employment is 300 below the December 2018 peak.*



# Indiana Private Sector Employment Change

*November 2019 increased by 800 jobs over the month and is up 8,100 over the year.*

IN Employment Change Over the Month, Year-to-Date and Over the Year (seasonally adjusted)

Industry	November 2018	December 2018	October 2019	November 2019	Month Change	Y-to-D Change	Y-to-Y Change
Private Educational & Health Services	481.0	484.4	490.8	492.6	1.8	8.2	11.6
.....Private Educational Services	66.0	66.4	64.3	64.5	0.2	-1.9	-1.5
.....Health Care & Social Assistance	415.0	418.0	426.5	428.1	1.6	10.1	13.1
Manufacturing	543.6	544.3	534.8	537.2	2.4	-7.1	-6.4
Professional & Business Services	343.0	344.2	350.8	348.5	-2.3	4.3	5.5
Financial Activities	138.4	138.4	141.0	140.3	-0.7	1.9	1.9
Construction	144.5	147.0	152.4	151.9	-0.5	4.9	7.4
Leisure and Hospitality	307.7	308.9	305.8	305.1	-0.7	-3.8	-2.6
Trade, Transportation & Utilities	598.5	597.5	591.3	591.6	0.3	-5.9	-6.9
.....Trade	442.4	440.2	434.6	434.8	0.2	-5.4	-7.6
.....Transportation, Warehousing & Utilities	156.1	157.3	156.7	156.8	0.1	-0.5	0.7
All Other	167.0	167.4	164.1	164.6	0.5	-2.8	-2.4
Total Private	2,723.7	2,732.1	2,731.0	2,731.8	0.8	-0.3	8.1
Government (Includes Public Schools & Hospitals)	428.0	429.0	430.1	431.1	1.0	2.1	3.1
Total Nonfarm	3,151.7	3,161.1	3,161.1	3,162.9	1.8	1.8	11.2
United States Total Private	127,566.0	127,790.0	129,354.0	129,608.0	254.0	1,818.0	2,042.0

- Manufacturing **gained 2,400** jobs over the month, Private Educational & Health Services gained 1,800.
- Personal & Business Services **lost 2,300** jobs over the month.

# Indiana Private Sector Employment Change From Peak and Trough

November 2019 estimates show Indiana has gained 407,600 private jobs since July 2009.

IN Statewide Estimates (seasonally adjusted) -- November 2019

Supersector	Private Empl. Peak Dec 2018	Private Empl. Trough July 2009	October 2019	November 2019	Month to Month Change	Change Since Peak	Change Since Trough	% Month to Month Change
Private Educational & Health Services	484.4	411.1	490.8	492.6	1.8	8.2	81.5	0.4%
.....Private Educational Services	66.4	63.3	64.3	64.5	0.2	-1.9	1.2	0.3%
.....Health Care & Social Assistance	418.0	347.8	426.5	428.1	1.6	10.1	80.3	0.4%
Manufacturing	544.3	426.7	534.8	537.2	2.4	-7.1	110.5	0.4%
Professional & Business Services	344.2	256.9	350.8	348.5	-2.3	4.3	91.6	-0.7%
Financial Activities	138.4	130.7	141.0	140.3	-0.7	1.9	9.6	-0.5%
Construction	147.0	117.4	152.4	151.9	-0.5	4.9	34.5	-0.3%
Leisure and Hospitality	308.9	276.8	305.8	305.1	-0.7	-3.8	28.3	-0.2%
Trade, Transportation & Utilities	597.5	546.0	591.3	591.6	0.3	-5.9	45.6	0.1%
.....Trade	440.2	421.5	434.6	434.8	0.2	-5.4	13.3	0.0%
.....Transportation, Warehousing & Utilities	157.3	124.5	156.7	156.8	0.1	-0.5	32.3	0.1%
All Other	167.4	158.6	164.1	164.6	0.5	-2.8	6.0	0.3%
Total Private	2,732.1	2,324.2	2,731.0	2,731.8	0.8	-0.3	407.6	0.0%
Government (Includes Public Schools & Hospitals)	429.0	434.5	430.1	431.1	1.0	2.1	-3.4	0.2%
Total Nonfarm	3,161.1	2,758.7	3,161.1	3,162.9	1.8	1.8	404.2	0.1%
United States Total Private	127,790.0	108,164.0	129,354.0	129,608.0	254.0	1,818.0	21,444.0	0.2%

- Manufacturing has accounted for 110,500 of this **increase** of jobs.
- Professional & Business Services **increased** by 91,600 jobs over this time frame.

For historical data, [visit this link](#).

# Indiana Private Sector Employment Change Compared to U.S.

November 2019 Indiana private sector was even at 0% and the U.S. grew by 0.2%.

## IN Employment Change Compared to the U.S.

Industry	Indiana Month to Month	U.S. Month to Month	Indiana vs U.S. Change
Private Educational & Health Services	0.4%	0.3%	OVER
.....Private Educational Services	0.3%	0.4%	UNDER
.....Health Care & Social Assistance	0.4%	0.3%	OVER
Manufacturing	0.4%	0.4%	OVER
Professional & Business Services	-0.7%	0.2%	UNDER
Financial Activities	-0.5%	0.1%	UNDER
Construction	-0.3%	0.0%	UNDER
Leisure and Hospitality	-0.2%	0.3%	UNDER
Trade, Transportation & Utilities	0.1%	0.1%	OVER
.....Trade	0.0%	0.0%	OVER
.....Transportation, Warehousing & Utils	0.1%	0.3%	UNDER
All Other	0.3%	0.2%	OVER
Total Private	0.0%	0.2%	UNDER
Government (Includes Public Schools & Hospitals)	0.2%	0.1%	OVER
Total Nonfarm	0.1%	0.2%	UNDER

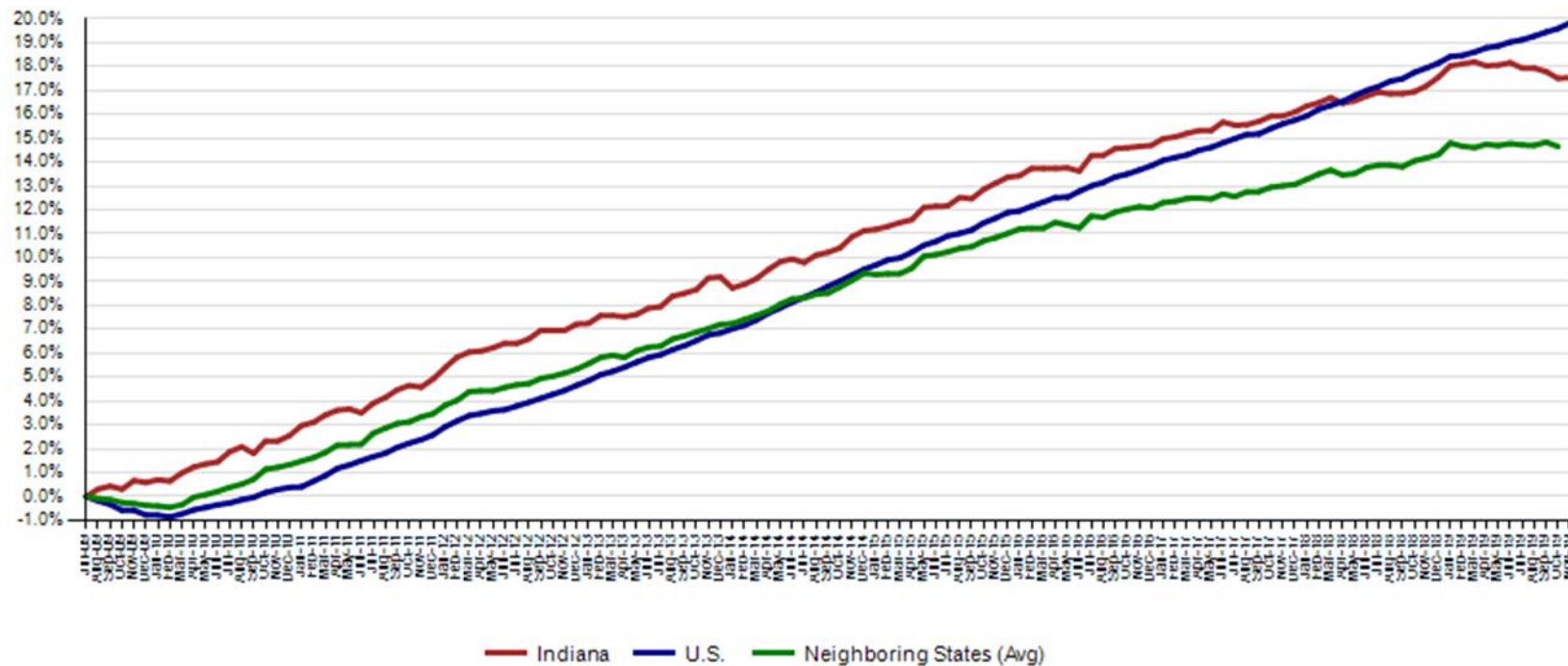
Indiana Year-to-Date	U.S. Year-to-Date	Indiana vs U.S. Change
1.7%	2.6%	UNDER
-2.9%	2.6%	UNDER
2.4%	2.6%	UNDER
-1.3%	0.4%	UNDER
1.2%	1.8%	UNDER
1.4%	1.3%	OVER
3.3%	1.8%	OVER
-1.2%	2.1%	UNDER
-1.0%	0.3%	UNDER
-1.2%	0.1%	UNDER
-0.3%	1.2%	UNDER
-1.7%	0.8%	UNDER
0.0%	1.4%	UNDER
0.5%	0.7%	UNDER
0.1%	1.3%	UNDER

Indiana Year-to-Year	U.S. Year-to-Year	Indiana vs U.S. Change
2.4%	2.8%	UNDER
-2.3%	3.0%	UNDER
3.2%	2.8%	OVER
-1.2%	0.6%	UNDER
1.6%	2.0%	UNDER
1.4%	1.3%	OVER
5.1%	2.0%	OVER
-0.8%	2.5%	UNDER
-1.2%	0.4%	UNDER
-1.7%	0.1%	UNDER
0.4%	1.1%	UNDER
-1.4%	0.9%	UNDER
0.3%	1.6%	UNDER
0.7%	0.7%	OVER
0.4%	1.5%	UNDER

# Indiana Private Sector Employment Growth Since July 2009

*Indiana is trailing the U.S. in private job growth since July 2009. The U.S. has grown by 19.8% while Indiana has grown by 17.5%.*

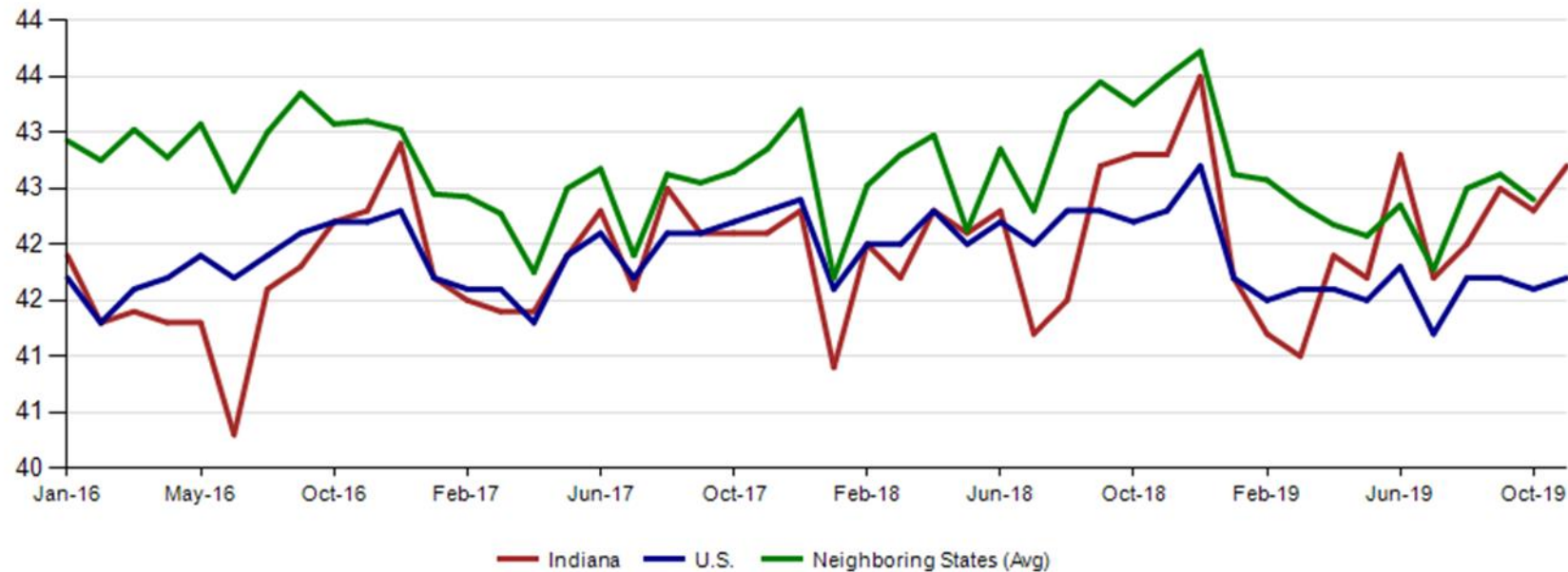
Private Sector Job Growth Since the Low Point of Employment in Indiana



# Avg. Weekly Manufacturing Production Hours

*November 2019 average weekly hours for Indiana manufacturing production hours increased by 0.4 of an hour to 42.7 hours. National manufacturing increased by 0.1 to 41.7 weekly hours, and Midwest states increased 0.5 to 41.0 hours per week (October 2019 data).*

Avg. Weekly Manufacturing Production Hours (non seasonally adjusted)



# LAUS Monthly Labor Force Report

INDIANA  
DEPARTMENT OF  
**WORKFORCE**  
DEVELOPMENT

MONTHLY  
BRIEFING

## Current Employment Statistics (CES) and Local Area Unemployment Statistics (LAUS)

### Jobs Data for November 2019

	Labor Force	Employed	Unemployed	IN Rate	Total NonFarm	Total Private	Regular UI Claims
<b>Dec-16</b>	<b>3,289,568</b>	<b>3,161,214</b>	<b>128,354</b>	<b>3.9</b>	<b>3,118,600</b>	<b>2,681,200</b>	<b>24,599</b>
<b>Nov-19</b>	<b>3,365,352</b>	<b>3,259,150</b>	<b>106,202</b>	<b>3.2</b>	<b>3,196,800</b>	<b>2,750,100</b>	<b>14,220</b>
<b>Change</b>	<b>75,784</b>	<b>97,936</b>	<b>(22,152)</b>	<b>(0.7)</b>	<b>78,200</b>	<b>68,900</b>	<b>(10,379)</b>

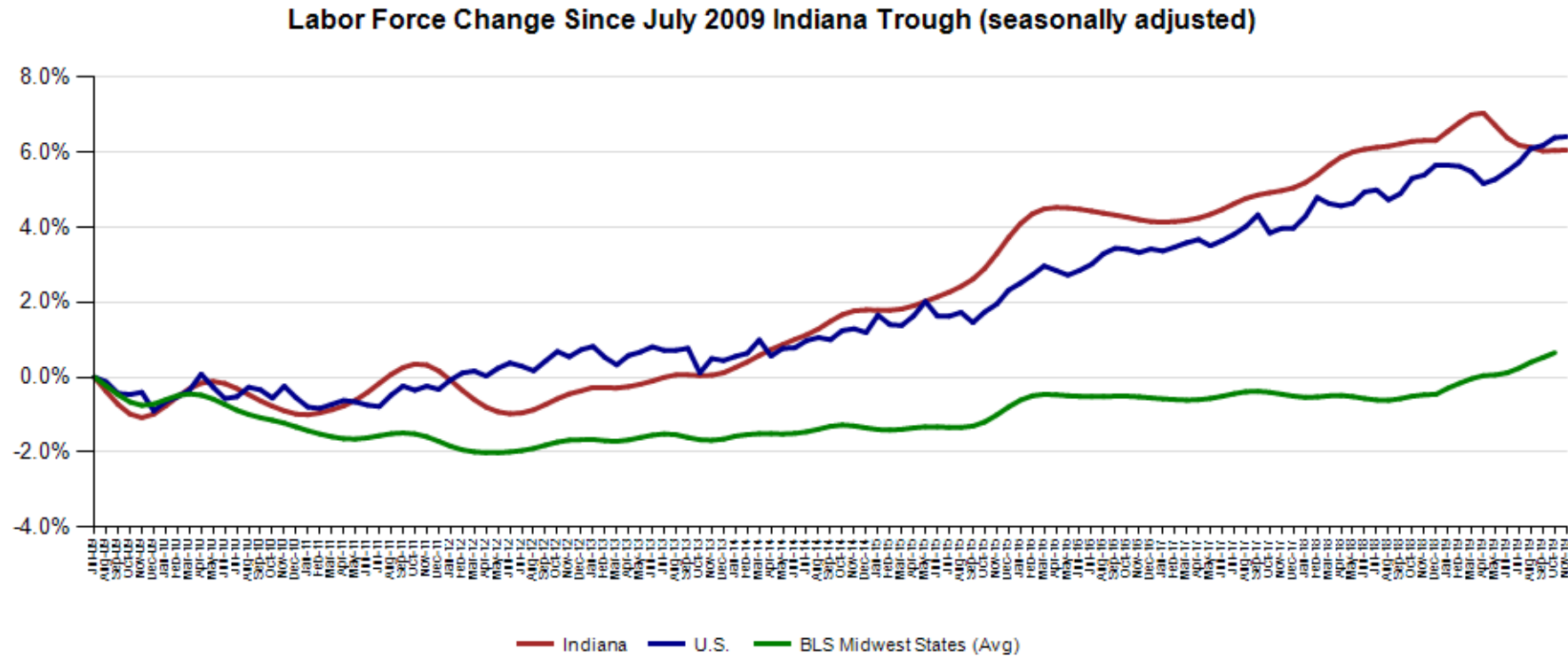
Month SA	Labor Force	Employed	Unemployed	IN Rate	Total NonFarm	Total Private	Regular UI Claims
<b>Dec-16</b>	<b>3,323,233</b>	<b>3,190,341</b>	<b>132,892</b>	<b>4.0</b>	<b>3,092,100</b>	<b>2,665,800</b>	<b>24,599</b>
<b>Nov-19</b>	<b>3,384,046</b>	<b>3,275,686</b>	<b>108,360</b>	<b>3.2</b>	<b>3,162,900</b>	<b>2,731,800</b>	<b>14,220</b>
<b>Change</b>	<b>60,813</b>	<b>85,345</b>	<b>(24,532)</b>	<b>(0.8)</b>	<b>70,800</b>	<b>66,000</b>	<b>(10,379)</b>



# Indiana Labor Force Pct. Growth Since July '09 Indiana Trough

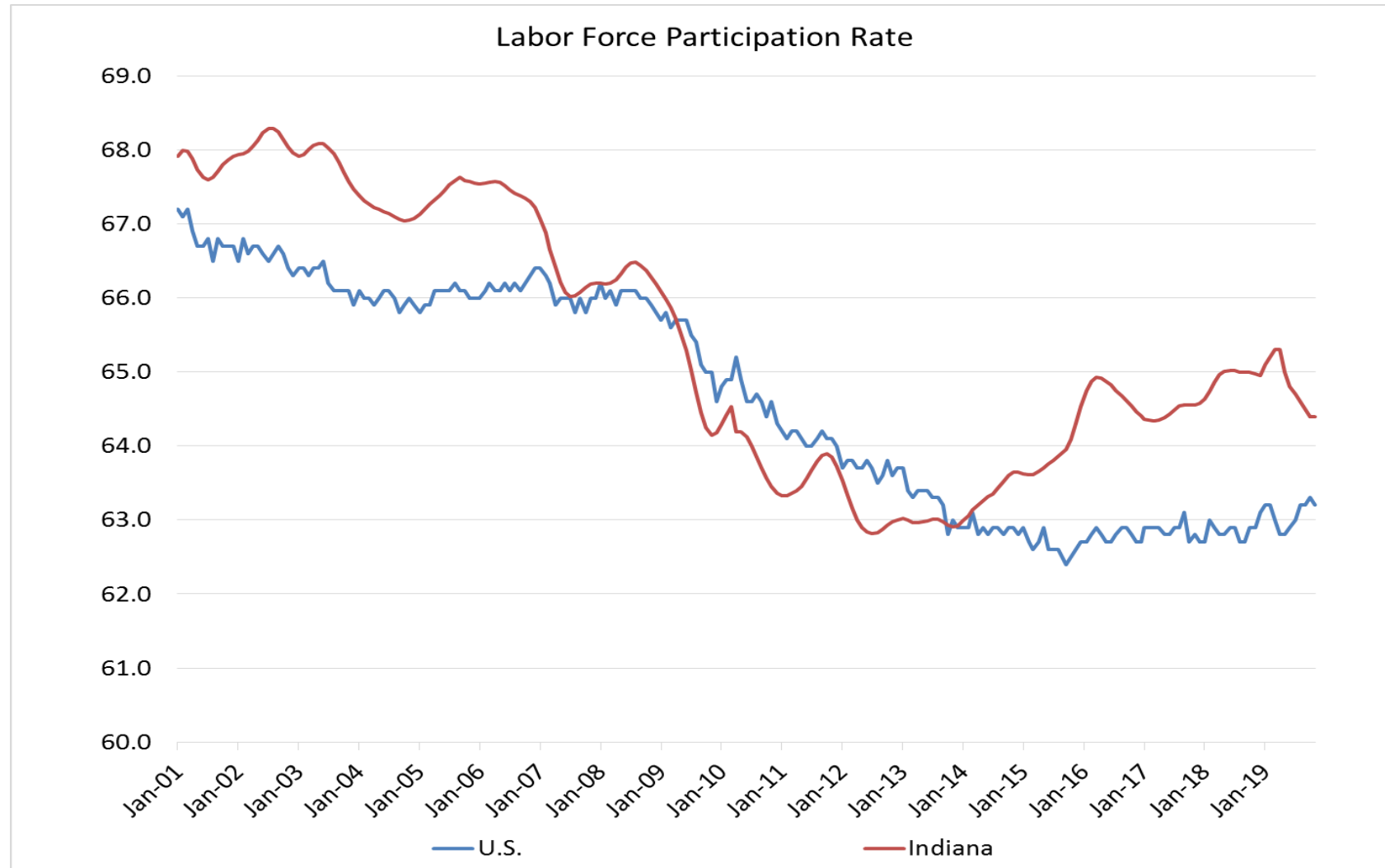
*November 2019 Indiana Seasonally Adjusted Labor Force stands at 3,384,046.*

- Employed labor force **increased** 38 over the month
- Unemployment **increased** by 308 over the month



# Indiana Labor Force Participation Rate Compared to U.S.

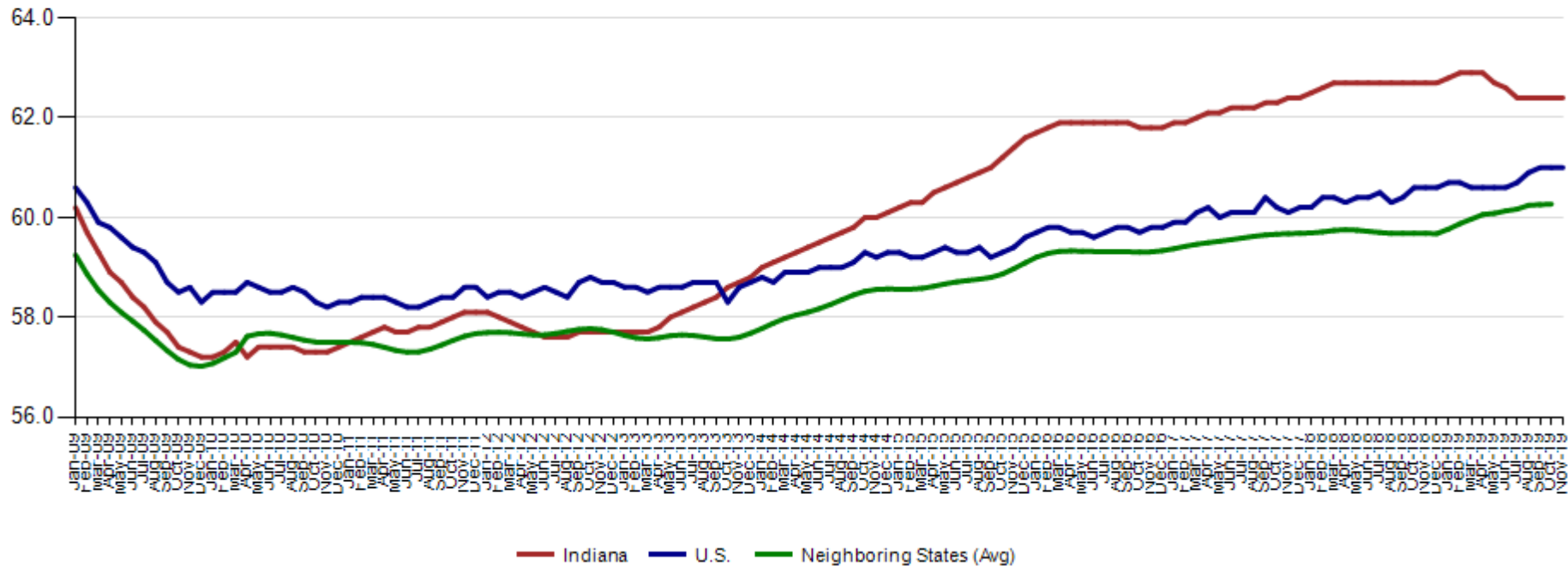
*Indiana is at 64.4% compared to U.S. at 63.2%*



# Employment to Population Ratio (seasonally adjusted)

*The Indiana Employment to Population Ratio for November 2019 is 62.4% compared to the U.S. at 61.0% and border states at 60.3% (October)*

Employment to Population Ratio (seasonally adjusted)



# Alternative Measures of Labor Underutilization

## 3rd Quarter 2018 through 2nd Quarter 2019 Averages

State	U-1	U-2	U-3	U-4	U-5	U-6
Illinois	1.6	2.1	4.2	4.4	5.0	7.9
Indiana	1.0	1.9	3.6	3.8	4.4	6.7
Kentucky	1.4	1.7	4.3	4.7	5.6	8.2
Michigan	1.4	1.8	4.1	4.4	4.8	7.6
Minnesota	0.8	1.8	3.1	3.2	3.7	5.6
Ohio	1.2	1.9	4.1	4.3	5.0	7.9
Wisconsin	0.9	1.6	3.1	3.2	3.7	5.7
United States	1.4	1.8	3.8	4.0	4.7	7.4

The six state measures are based on the same definitions as those published for the U.S.:

- U-1, persons unemployed 15 weeks or longer, as a percent of the civilian labor force;
- U-2, job losers and persons who completed temporary jobs, as a percent of the civilian labor force;
- U-3, total unemployed, as a percent of the civilian labor force (this is the definition used for the official unemployment rate);
- U-4, total unemployed plus discouraged workers, as a percent of the civilian labor force plus discouraged workers;
- U-5, total unemployed, plus discouraged workers, plus all other marginally attached workers, as a percent of the civilian labor force plus all marginally attached workers; and
- U-6, total unemployed, plus all marginally attached workers, plus total employed part time for economic reasons, as a percent of the civilian labor force plus all marginally attached workers.



# Midwest Comparison Rates: Seasonally Adjusted Over the Year and Over the Month

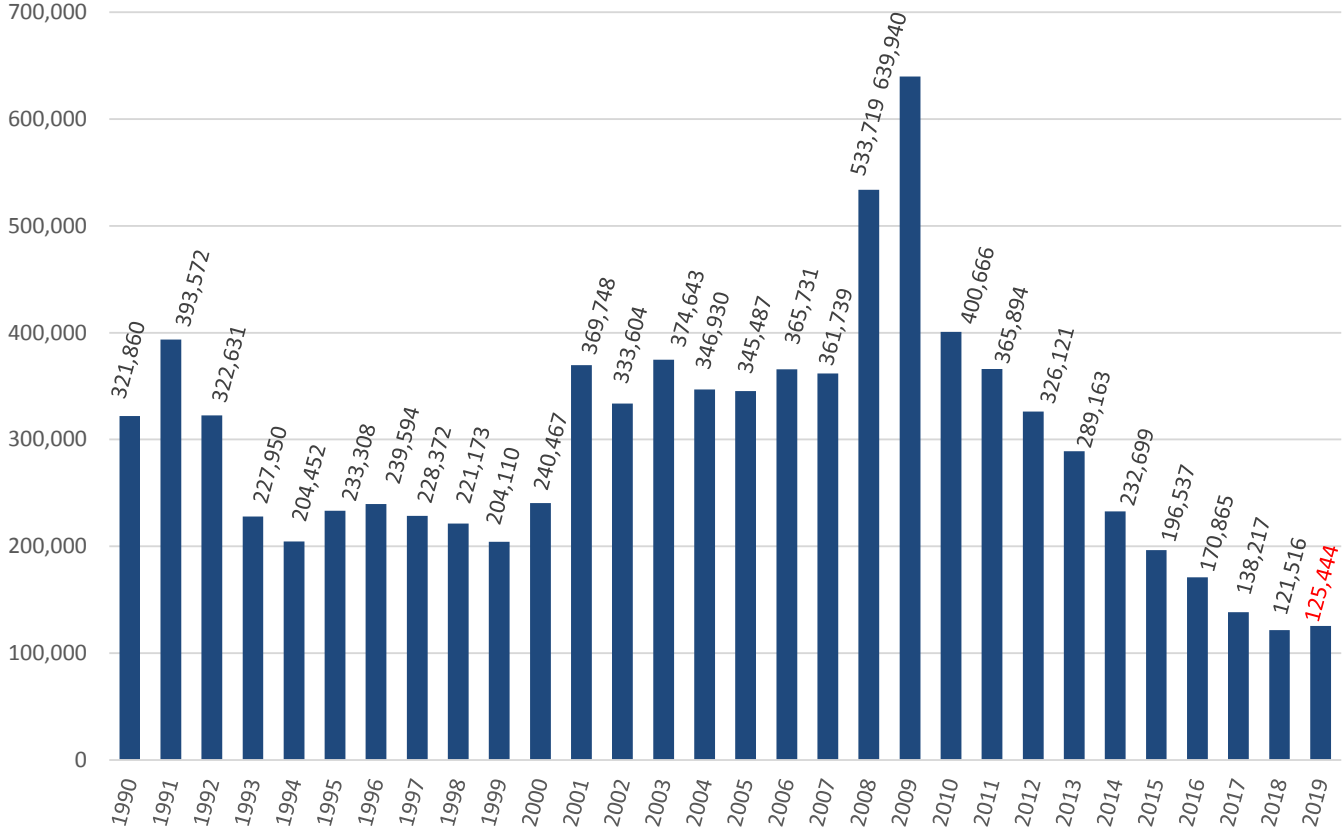
	Nov-18	Oct-19	Nov-19	Monthly change	Yearly change
Indiana	3.5%	3.2%	3.2%	0.0%	-0.3%
U.S.	3.7%	3.6%	3.5%	-0.1%	-0.2%
Illinois	4.3%	3.9%	3.8%	-0.1%	-0.5%
Kentucky	4.3%	4.3%	4.4%	0.1%	0.1%
Michigan	4.0%	4.1%	4.0%	-0.1%	0.0%
Minnesota	2.9%	3.2%	3.3%	0.1%	0.4%
Ohio	4.6%	4.2%	4.2%	0.0%	-0.4%
Wisconsin	3.0%	3.3%	3.3%	0.0%	0.3%

\*2018 Benchmark  
Confidential & Deliberative



# Weekly Initial Claims – Week 49

Total aggregated UI claims for the first 49 weeks of each year as reported to ETA.



## Regular UI Claims

*Reference Week (12th of the month) Input to LAUS Unemployment Rate Model  
Declines over the month - and over the year*

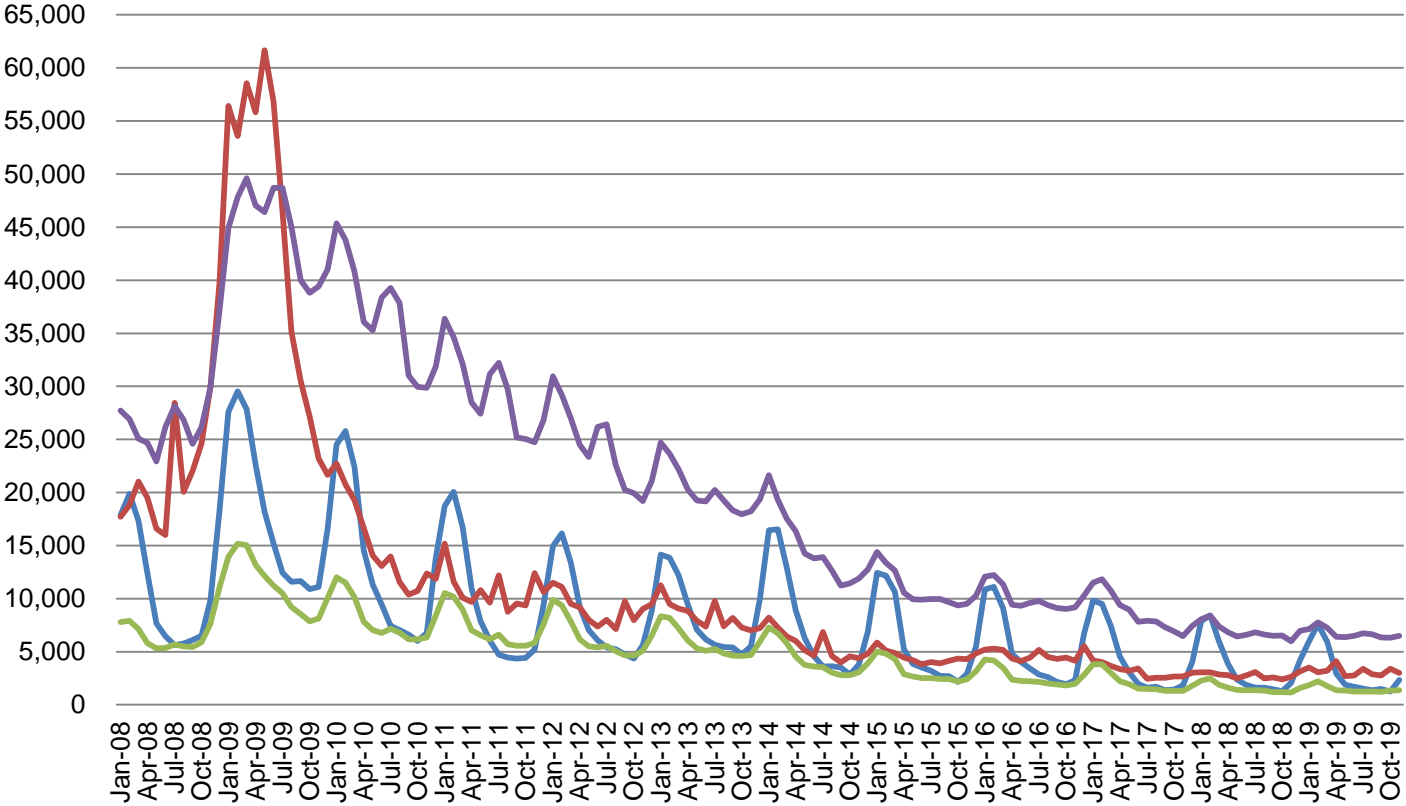
	2009	2013	2014	2015	2016	2017	2018	2019	OTM Change	OTY Change
JANUARY	150,888	63,223	49,377	41,333	36,555	33,137	24,968	21,808	5,115	(3,160)
FEBRUARY	154,388	60,183	52,316	39,282	36,909	32,463	25,879	23,992	2,184	(1,887)
MARCH	157,257	54,578	45,928	35,755	32,439	32,141	21,171	22,446	(1,546)	1,275
APRIL	143,842	48,548	39,717	25,597	23,895	21,998	17,618	17,914	(4,532)	296
MAY	141,174	42,997	32,460	22,807	22,300	19,431	14,774	14,411	(3,503)	(363)
JUNE	136,670	41,722	29,524	22,030	22,025	16,722	14,653	14,386	(25)	(267)
JULY	121,336	44,597	30,845	22,341	22,326	15,775	15,098	15,054	668	(44)
AUGUST	103,509	39,998	26,061	21,472	20,737	15,692	13,959	14,156	(898)	197
SEPTEMBER	92,680	39,563	23,685	20,941	19,372	14,334	12,981	13,620	(536)	639
OCTOBER	86,275	37,778	23,768	19,917	19,143	14,266	13,083	14,106	486	1,023
NOVEMBER	82,451	38,517	25,315	21,199	19,547	14,347	15,499	14,220	114	(1,279)
DECEMBER	91,814	42,484	30,982	26,249	24,599	17,345	16,693			

*\*Without earnings – Reference week claims*



# Regular UI Claims by Industry

For the Reference Week of Each Month



Source: ETA  
203

Construction Manufacturing

# Indiana: Not in the Labor Force by Gender and Age

December 2018 – November 2019

Current Population Survey, Bureau of Labor Statistics (in 1000s)

	Total	Age			Sex	
		16 to 24 years	25 to 54 years	55 years and over	Men	Women
	Indiana					
Total not in the labor force	1,855.1	290.8	438.9	1,125.4	738.8	1,116.3
Do not want a job now	1,750.7	256.2	404.8	1,089.7	686.3	1,064.4
Want a job	104.4	34.6	34.1	35.7	52.5	51.9
Did not search for work in previous year	69.9	22.2	19.2	28.4	33.6	36.3
Searched for work in previous year	34.5	12.3	14.9	7.3	18.9	15.6
Not available to work now	6.0	3.1	2.7	0.2	3.0	3.0
Available to work now	28.5	9.2	12.2	7.1	15.9	12.6
Reason not currently looking:						
Discouragement over job prospects	7.5	2.2	3.0	2.4	5.5	2.1
Reasons other than discouragement	21.0	7.1	9.2	4.7	10.5	10.5

- Data not available

Source: Table b. Civilians not in the labor force by sex and age, December 2018 - November 2019 (based on CPS)  
(Numbers in thousands)

# Indiana: Labor Force by Education Attainment

December 2018 – November 2019

Current Population Survey, Bureau of Labor Statistics (in 1000s)

	Civilian noninstitutional population	Civilian Labor Force		Employment		Unemployment	
		Total	Rate	Total	Rate	Total	Rate
	Indiana						
Less than a High school diploma	373.1	159.5	42.8	147.6	39.6	11.9	7.5
High school graduates, no college <sup>1</sup>	1,570.1	917.8	58.5	888.5	56.6	29.3	3.2
Some college or associate degree	1,160.1	798.5	68.8	776.9	67.0	21.7	2.7
Bachelor's degree and higher <sup>2</sup>	1,338.2	1,001.4	74.8	986.5	73.7	14.9	1.5

- Data not available

<sup>1</sup> Includes persons with a high school diploma or equivalent

<sup>2</sup> Includes person with bachelor's, master's, professional and doctoral degrees

Source: Table f. Employment status of the civilian non-institutional population 25 years and over by educational attainment, December 2018 - November 2019 (based on CPS) (Numbers in thousands)

## Indiana: Labor Force by Gender and Age

	Civilian labor force participation rate	Unemployem t rate
<b>Both Sexes</b>		
<b>All Races</b>		
Age 16+	64.6	3.4
Age 16-19	44.4	12.6
Age 20+	66.1	3.0
<b>White</b>		
Age 16+	64.5	3.0
Age 16-19	48.0	10.2
Age 20+	65.7	2.7
<b>Black</b>		
Age 16+	64.3	6.4
Age 16-19	31.3	29.1
Age 20+	67.2	5.4
<b>Hispanic</b>		
Age 16+	70.1	4.2
Age 16-19	45.7	14.4
Age 20+	72.6	3.5
<b>Male, All Races</b>		
Age 16+	71.0	3.6
Age 20+	72.8	3.1
<b>Female, All Races</b>		
Age 16+	58.6	3.2
Age 20+	59.7	2.8
<b>Male, White</b>		
Age 16+	71.0	3.2
Age 20+	72.5	2.9
<b>Female, White</b>		
Age 16+	58.4	2.8
Age 20+	59.2	2.5
<b>Male, Black</b>		
Age 16+	67.1	6.8
Age 20+	70.6	5.4
<b>Female, Black</b>		
Age 16+	61.9	6.0
Age 20+	64.2	5.5

*December 2018 – November 2019  
Current Population Survey, Bureau  
of Labor Statistics (in 1000s)*

*Source: Table a. Employment status of the civilian non-institutional population by sex, age, race, and Hispanic origin, December 2018 – November 2019 (based on CPS) (Numbers in thousands)*

# Indiana: Labor Force by Gender and Age

December 2018 – November 2019

Current Population Survey, Bureau of Labor Statistics (in 1000s)

	Civilian labor force participation rate	Unemployment rate
<b>Male, All Races</b>		
Age 16-19	46.6	14.2
Age 20-24	82.4	6.1
Age 25-34	89.9	3.9
Age 35-44	92.3	2.5
Age 45-54	88.8	2.6
Age 55-64	70.8	2.0
Age 65+	22.8	2.7
<b>Female, All Races</b>		
Age 16-19	42.2	10.8
Age 20-24	76.2	4.2
Age 25-34	73.3	2.8
Age 35-44	74.5	2.9
Age 45-54	77.5	2.6
Age 55-64	61.9	1.8
Age 65+	16.8	3.3

Source: Table a. Employment status of the civilian non-institutional population by sex, age, race, and Hispanic origin, December 2018 - November 2019 (based on CPS) (Numbers in thousands)



# Indiana: Duration of Unemployment Part 1

December 2018 – November 2019  
Current Population Survey, Bureau of Labor Statistics (in 1000s)

	Total	5 to 14 weeks	15 weeks and over					Median duration  (Average of monthly median duration)	Mean duration
			Total	15 to 26 weeks	27 weeks and over				
					Total	27 to 51 weeks	52 weeks and over		
Indiana									
Both Sexes									
All Races	115.6	38.9	30.8	12.8	18.0	8.7	9.3	8.0	16.0
White	88.4	26.9	25.1	10.5	14.7	7.6	7.1	7.9	15.8
Black	20.2	9.4	3.2	1.7	1.5	1.1	0.3	6.2	10.0
Hispanic	11.6	3.1	3.4	1.3	2.1	-	2.1	13.5	18.7
Age 16-19	20.0	6.8	2.7	1.8	0.9	0.7	0.2	5.2	8.3
Age 20+	95.5	32.2	28.1	11.0	17.1	8.0	9.0	8.4	17.6
Male, 16+	65.6	25.0	18.1	7.8	10.3	4.8	5.5	9.0	16.9
Female, 16+	50.0	13.9	12.7	5.0	7.7	4.0	3.7	6.1	14.8

- Data not available

Source: Table d. Unemployed persons by sex, age, race, Hispanic origin, and duration of unemployment, December 2018 - November 2019 (based on CPS)  
(Numbers in thousands)

## Indiana: Duration of Unemployment Part 2

December 2018 – November 2019  
Current Population Survey, Bureau of Labor Statistics (in 1000s)

	Duration of unemployment							Aggregate weeks of unemployment
	Less than 5 weeks	5-6	7-10	11-14	15-26	27-51	52+	
Indiana								
Both Sexes								
All Races	45.9	7.1	17.0	14.9	12.8	8.7	9.3	1,845.3
White	36.4	6.3	11.2	9.5	10.5	7.6	7.1	1,393.7
Black	7.6	0.4	4.8	4.2	1.7	1.1	0.3	201.7
Hispanic	5.0	0.5	1.6	1.0	1.3	-	2.1	216.8
Age 16-19	10.6	0.7	3.6	2.5	1.8	0.7	0.2	166.1
Age 20+	35.3	6.4	13.4	12.3	11.0	8.0	9.0	1,679.2
Male, 16+	22.5	3.4	11.0	10.6	7.8	4.8	5.5	1,106.8
Female, 16+	23.3	3.7	6.0	4.3	5.0	4.0	3.7	738.5

- Data not available

Source: Table d. Unemployed persons by sex, age, race, Hispanic origin, and duration of unemployment, December 2018 - November 2019 (based on CPS)  
(Numbers in thousands)

# Purchasing Managers' Index (PMI)

- The Purchasing Managers Index (PMI) is a measure of the prevailing direction of economic trends in manufacturing.
- The PMI is based on a monthly survey of supply chain managers across 19 industries, covering both upstream and downstream activity.
- The value and movements in the PMI and its components can provide useful insight to business decision makers, market analysts, and investors, and is a leading indicator of overall economic activity in the U.S.



PMI is a number from 0 to 100. A PMI above 50 represents an expansion when compared with the previous month. A PMI reading under 50 represents a contraction.

Index	Series Index Nov	Series Index Oct	Percentage Point Change	Direction	Rate of Change	Trend* (Months)
<b>PMI®</b>	48.1	48.3	-0.2	Contracting	Faster	4
<b>New Orders</b>	47.2	49.1	-1.9	Contracting	Faster	4
<b>Production</b>	49.1	46.2	2.9	Contracting	Slower	4
<b>Employment</b>	46.6	47.7	-1.1	Contracting	Faster	4
<b>Supplier Deliveries</b>	52	49.5	2.5	Slowing	From Faster	1
<b>Inventories</b>	45.5	48.9	-3.4	Contracting	Faster	6
<b>Customers' Inventories</b>	45	47.8	-2.8	Too Low	Faster	38
<b>Prices</b>	46.7	45.5	1.2	Decreasing	Slower	6
<b>Backlog of Orders</b>	43	44.1	-1.1	Contracting	Faster	7
<b>New Export Orders</b>	47.9	50.4	-2.5	Contracting	From Growing	1
<b>Imports</b>	48.3	45.3	3	Contracting	Slower	5
<b>OVERALL ECONOMY</b>				Growing	Slower	127
<b>Manufacturing Sector</b>				Contracting	Faster	4

