



INDIANA  
**WORKFORCE**  
DEVELOPMENT  
AND ITS **WorkOne** CENTERS

# Indiana's Employment and Labor Force Estimates March 2017

*04/18/2017*



# Key Points

- **The Indiana Unemployment Rate is 3.9% in March 2017.**  
Nationally the rate is 4.5%.
- Indiana's rate has decreased 0.8% over the year from March 2016 and currently is 3.9%.
- Indiana's labor force increased over the month by 6,093 with an increase in employment of 12,322 and an unemployment decrease of 6,229.
- Indiana's labor force has increased by 3,433 over the year and 150,164 since January 2013.
- Indiana's labor force participation rate increased over the month and is currently 64.5%. This remains above the US Labor Force Participation rate which stands at 63.0%.
- March total private employment is 7,400 above the November 2016 peak.



# Key Points

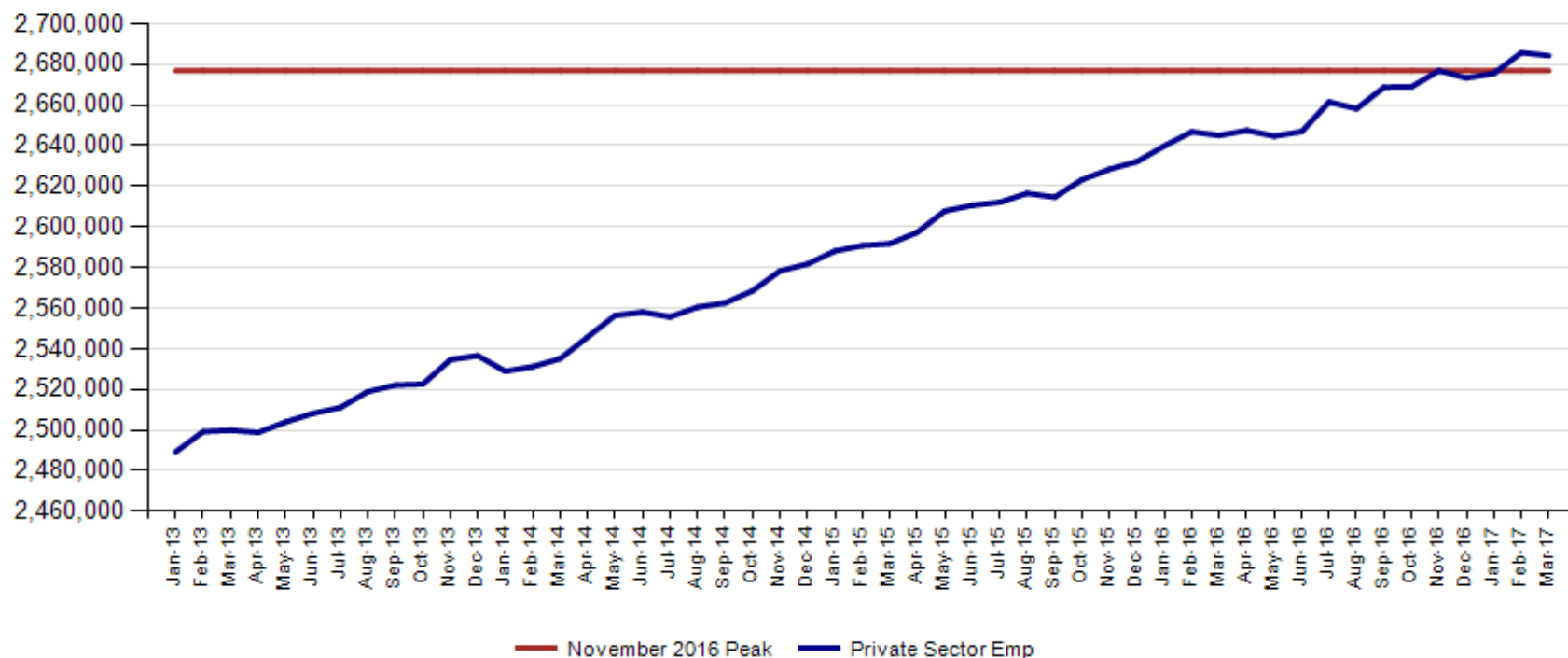
**Indiana total private employment decreased 1,500 over the month and had gains of 39,300 over the year.**

- Indiana March private employment stands at 2,684,300.
- Trade, Transportation & Utilities had gains of 2,400, with the largest gains in Trade.
- Private Educational & Health Services had gains of 1,500.
- Leisure and Hospitality had gains of 1,200.
- Financial Activities had gains of 400.
- Professional & Business Services had losses of 4,400.
- Construction had losses of 1,400.
- Manufacturing lost 200 jobs.
- The All Other Category had losses of 1,000.



**March total private employment is 7,400 above the November 2016 peak.**

**Indiana Private Sector Employment**





**March 2017 Indiana private sector employment decreased by 1,500 jobs over the month but remains up 39,300 over the year. The monthly decrease was driven by a loss of 4,400 jobs in Professional and Business Services.**

**IN Employment Change Over the Month, Year-to-Date and Over the Year (seasonally adjusted)**

Industry	March 2016	December 2016	February 2017	March 2017	Month Change	Y-to-D Change	Y-to-Y Change
Private Educational & Health Services	460.2	470.0	472.0	473.5	1.5	3.5	13.3
.....Private Educational Services	68.7	71.3	72.7	73.2	0.5	1.9	4.5
.....Health Care & Social Assistance	391.5	398.7	399.3	400.3	1.0	1.6	8.8
Manufacturing	521.9	526.9	530.9	530.7	-0.2	3.8	8.8
Professional & Business Services	332.2	337.3	338.0	333.6	-4.4	-3.7	1.4
Financial Activities	133.1	134.8	135.9	136.3	0.4	1.5	3.2
Construction	130.1	128.8	135.6	134.2	-1.4	5.4	4.1
Leisure and Hospitality	306.6	310.2	305.7	306.9	1.2	-3.3	0.3
Trade, Transportation & Utilities	595.6	598.4	598.3	600.7	2.4	2.3	5.1
.....Trade	450.9	455.2	454.7	457.6	2.9	2.4	6.7
.....Transportation, Warehousing & Utilities	144.7	143.2	143.6	143.1	-0.5	-0.1	-1.6
All Other	165.3	166.9	169.4	168.4	-1.0	1.5	3.1
Total Private	2,645.0	2,673.3	2,685.8	2,684.3	-1.5	11.0	39.3
Government (Includes Public Schools & Hospitals)	429.2	430.6	433.7	435.0	1.3	4.4	5.8
Total Nonfarm	3,074.2	3,103.9	3,119.5	3,119.3	-0.2	15.4	45.1
United States Total Private	121,507.0	123,026.0	123,451.0	123,540.0	89.0	514.0	2,033.0



March 2017 estimates show Indiana has gained 361,100 in Private jobs since the July 2009 trough. Manufacturing has accounted for 103,800 of those jobs.

IN Statewide Estimates (seasonally adjusted) -- March 2017

Supersector	Private Empl. Peak Nov 2016	Private Empl. Trough July 2009	February 2017	March 2017	Change Since Peak	Change Since Trough	Month to Month Change
Private Educational & Health Services	472.1	411.1	472.0	473.5	1.4	62.4	1.5
.....Private Educational Services	74.2	63.3	72.7	73.2	-1.0	9.9	0.5
.....Health Care & Social Assistance	397.9	347.8	399.3	400.3	2.4	52.5	1.0
Manufacturing	524.6	426.9	530.9	530.7	6.1	103.8	-0.2
Professional & Business Services	340.7	256.9	338.0	333.6	-7.1	76.7	-4.4
Financial Activities	134.9	130.7	135.9	136.3	1.4	5.6	0.4
Construction	129.1	116.5	135.6	134.2	5.1	17.7	-1.4
Leisure and Hospitality	309.5	276.8	305.7	306.9	-2.6	30.1	1.2
Trade, Transportation & Utilities	598.8	545.7	598.3	600.7	1.9	55.0	2.4
.....Trade	454.5	421.6	454.7	457.6	3.1	36.0	2.9
.....Transportation, Warehousing & Utilities	144.3	124.1	143.6	143.1	-1.2	19.0	-0.5
All Other	167.2	158.6	169.4	168.4	1.2	9.8	-1.0
Total Private	2,676.9	2,323.2	2,685.8	2,684.3	7.4	361.1	-1.5
Government (Includes Public Schools & Hospitals)	431.4	434.5	433.7	435.0	3.6	0.5	1.3
Total Nonfarm	3,108.3	2,757.7	3,119.5	3,119.3	11.0	361.6	-0.2
United States Total Private	122,876.0	108,171.0	123,451.0	123,540.0	664.0	15,369.0	89.0



Indiana job growth over the month continued to trail the national trend in private sector gains in March. Indiana Private Educational Services, Manufacturing, Financial Activities, and Construction are growing faster than the US over the year.

### IN Employment Change Compared to the U.S.

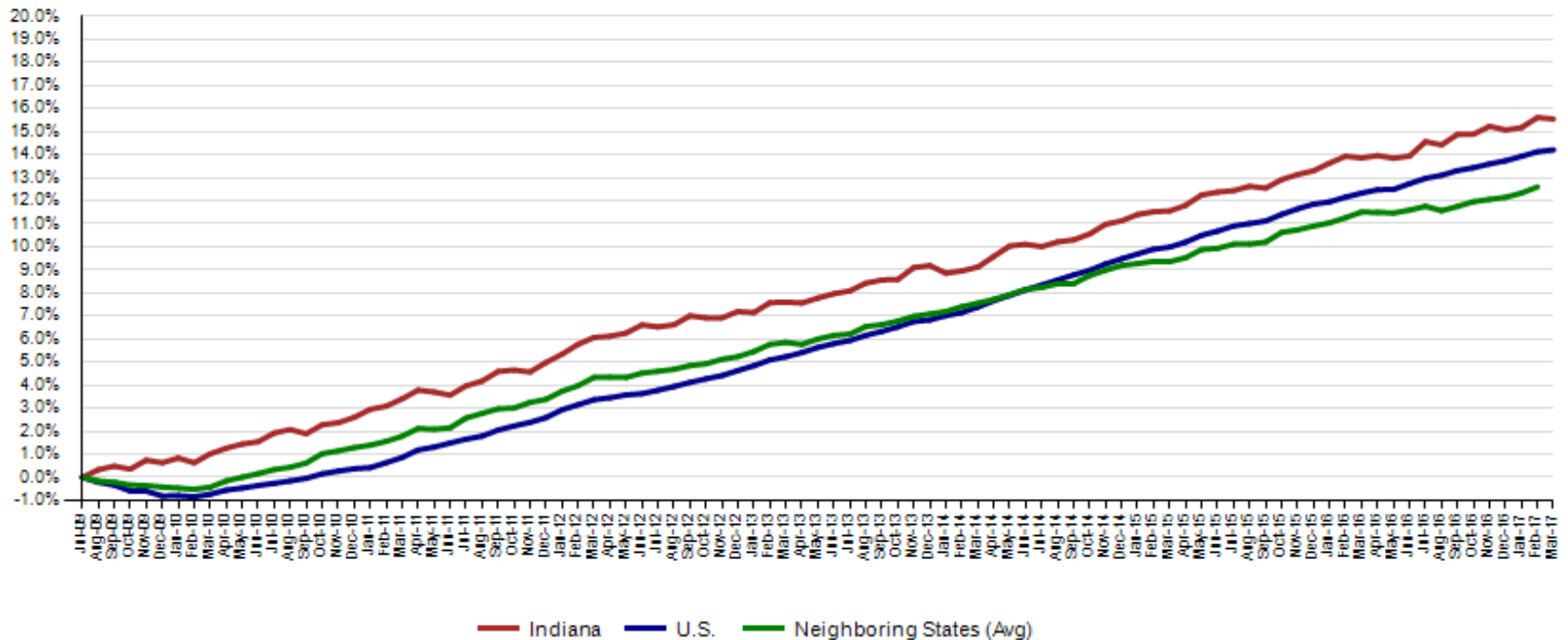
Industry	Indiana Month to Month	U.S. Month to Month	Indiana vs U.S. Change
Private Educational & Health Services	0.3%	0.1%	OVER
.....Private Educational Services	0.7%	0.0%	OVER
.....Health Care & Social Assistance	0.3%	0.1%	OVER
Manufacturing	0.0%	0.1%	UNDER
Professional & Business Services	-1.3%	0.3%	UNDER
Financial Activities	0.3%	0.1%	OVER
Construction	-1.0%	0.1%	UNDER
Leisure and Hospitality	0.4%	0.1%	OVER
Trade, Transportation & Utilities	0.4%	-0.1%	OVER
.....Trade	0.6%	-0.1%	OVER
.....Transportation, Warehousing & Utils	-0.3%	0.1%	UNDER
All Other	-0.6%	0.1%	UNDER
Total Private	-0.1%	0.1%	UNDER
Government (Includes Public Schools & Hospitals)	0.3%	0.0%	OVER
Total Nonfarm	0.0%	0.1%	UNDER

Indiana Year-to-Date	U.S. Year-to-Date	Indiana vs U.S. Change
0.7%	0.4%	OVER
2.7%	0.6%	OVER
0.4%	0.4%	UNDER
0.7%	0.4%	OVER
-1.1%	0.7%	UNDER
1.1%	0.5%	OVER
4.2%	1.5%	OVER
-1.1%	0.3%	UNDER
0.4%	-0.1%	OVER
0.5%	-0.1%	OVER
-0.1%	-0.1%	UNDER
0.9%	0.4%	OVER
0.4%	0.4%	UNDER
1.0%	0.1%	OVER
0.5%	0.4%	OVER

Indiana Year-to-Year	U.S. Year-to-Year	Indiana vs U.S. Change
2.9%	2.3%	OVER
6.6%	2.5%	OVER
2.2%	2.3%	UNDER
1.7%	0.3%	OVER
0.4%	3.2%	UNDER
2.4%	2.2%	OVER
3.2%	2.6%	OVER
0.1%	1.7%	UNDER
0.9%	0.7%	OVER
1.5%	0.5%	OVER
-1.1%	1.6%	UNDER
1.9%	0.3%	OVER
1.5%	1.7%	UNDER
1.4%	0.7%	OVER
1.5%	1.5%	UNDER

Since the low point of employment in July 2009, private sector employment growth in Indiana has surpassed the U.S. (15.5% vs. 14.2%).

**Private Sector Job Growth Since the Low Point of Employment in Indiana**

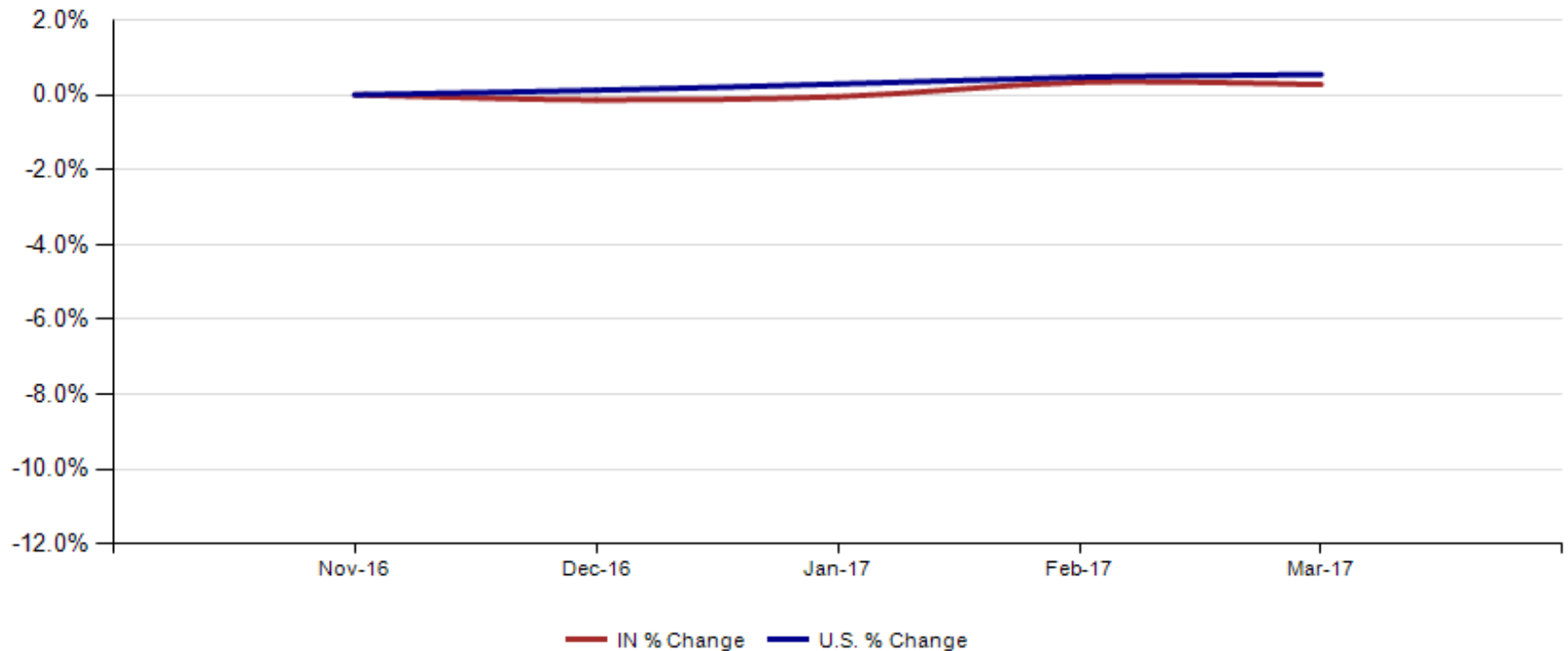


Source: Current Employment Statistics, seasonally adjusted



Since Indiana's high point of employment (November 2016), private sector employment growth in Indiana has lagged the U.S. (0.3% growth vs. 0.5% nationally).

**Private Sector Job Growth Since the Peak of Employment in Indiana**





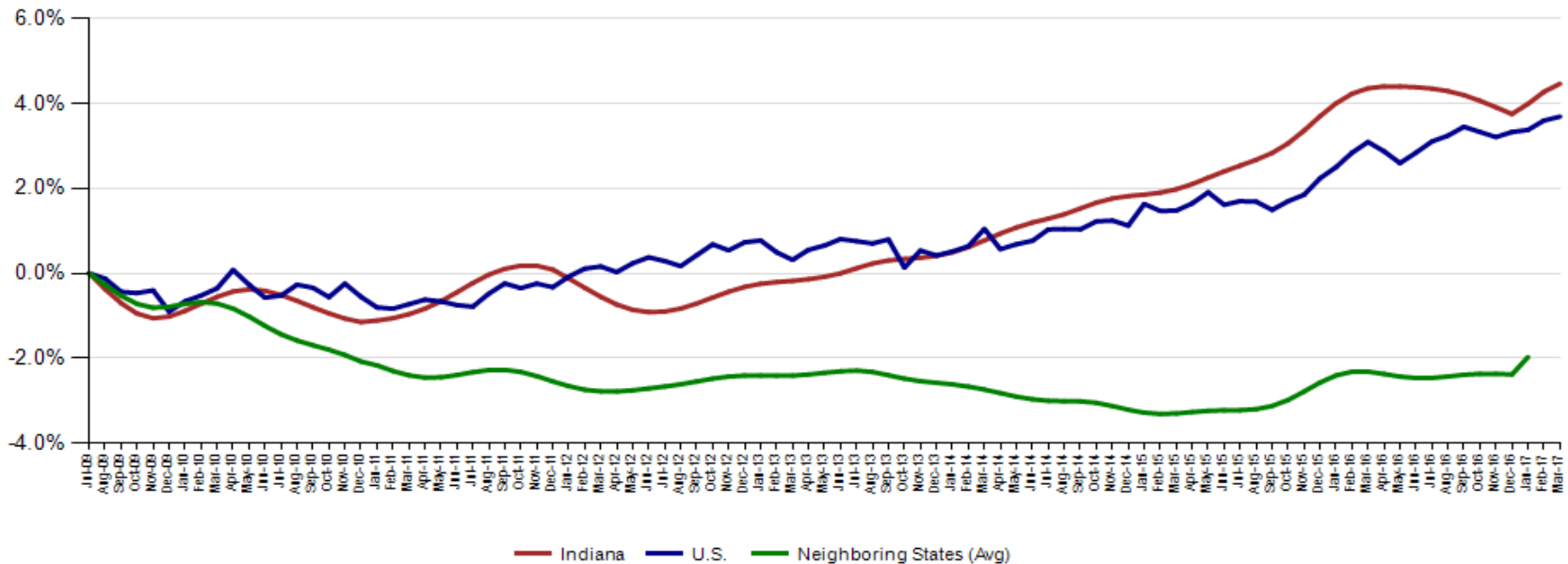
CES February Total Non Farm preliminary estimates were revised up by 5,700 jobs. Private employment was revised up by 5,800. The change from January to February is now an increase of 8,200 in Total Non-Farm and an increase 5,400 in private employment .

Revisions to February 2017 Estimates						
INDUSTRY TITLE	Jan	Feb Prel	Feb Rev	Revision	Chg from Jan	Prel Chg from Jan
Total Nonfarm	3111.3	3113.8	3119.5	5.7	8.2	2.5
Total Private	2680.4	2680.0	2685.8	5.8	5.4	-0.4
Goods Producing	668.2	672.9	673.0	0.1	4.8	4.7
Service-Providing	2443.1	2440.9	2446.5	5.6	3.4	-2.2
Private Service Providing	2012.2	2007.1	2012.8	5.7	0.6	-5.1
Construction	134.8	135.1	135.6	0.5	0.8	0.3
Manufacturing	527.1	531.3	530.9	-0.4	3.8	4.2
Trade, Transportation, and Utilities	595.6	593.1	598.3	5.2	2.7	-2.5
Wholesale Trade	117.7	117.9	118.0	0.1	0.3	0.2
Retail Trade	334.5	336.6	336.7	0.1	2.2	2.1
Transportation, Warehousing, and Utilities	143.4	138.6	143.6	5.0	0.2	-4.8
Information	32.5	32.0	32.0	0.0	-0.5	-0.5
Financial Activities	136.4	135.6	135.9	0.3	-0.5	-0.8
Finance and Insurance	101.2	100.3	100.6	0.3	-0.6	-0.9
Real Estate and Rental and Leasing	35.2	35.3	35.3	0.0	0.1	0.1
Professional and Business Services	339.7	339.1	338.0	-1.1	-1.7	-0.6
Professional, Scientific, and Technical Services	114.6	114.5	114.2	-0.3	-0.4	-0.1
Management of Companies and Enterprises	34.6	34.6	34.6	0.0	0.0	0.0
Admin & Support & Waste Mgmt & Remediation Services	190.5	190.0	189.2	-0.8	-1.3	-0.5
Education and Health Services	470.5	471.1	472.0	0.9	1.5	0.6
Educational Services	70.5	72.6	72.7	0.1	2.2	2.1
Health Care and Social Assistance	400.0	398.5	399.3	0.8	-0.7	-1.5
Leisure and Hospitality	308.9	305.3	305.7	0.4	-3.2	-3.6
Other Services	128.6	130.9	130.9	0.0	2.3	2.3
Government	430.9	433.8	433.7	-0.1	2.8	2.9



**Indiana's March seasonally adjusted labor force is now at 3,330,933 and the number of employed is at 3,201,990. An estimated 128,943 individuals are currently unemployed and seeking employment. The preliminary March labor force and number of employed are new highs for Indiana.**

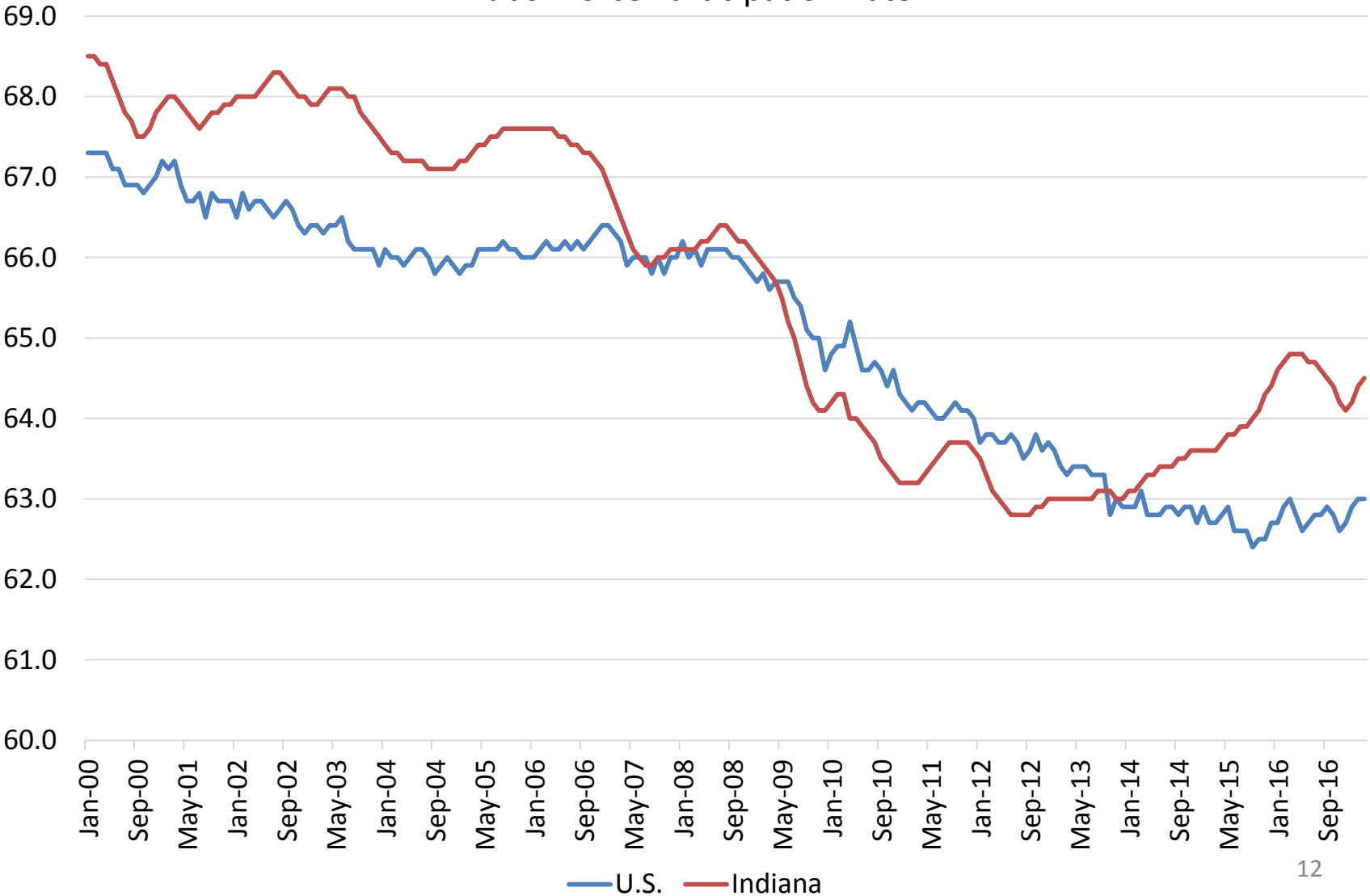
**Labor Force Change Since July 2009 Indiana Trough (seasonally adjusted)**





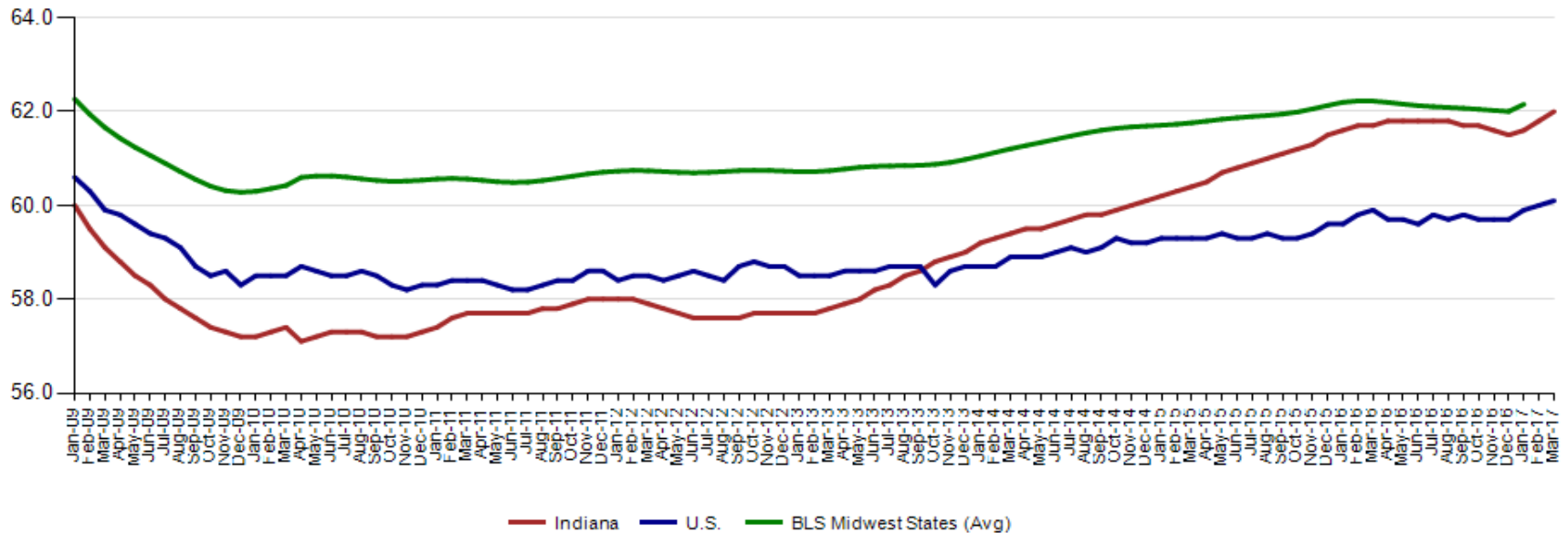
**The March Indiana labor force participation rate is now 64.5%  
and the U.S. Rate is now at 63.0%**

Labor Force Participation Rate



**Indiana's employment to population March 2017 rate is 62.0% The February U.S. employment to population rate is 60.1% The BLS Midwest Regional States held at 62.2% (January 2016).**

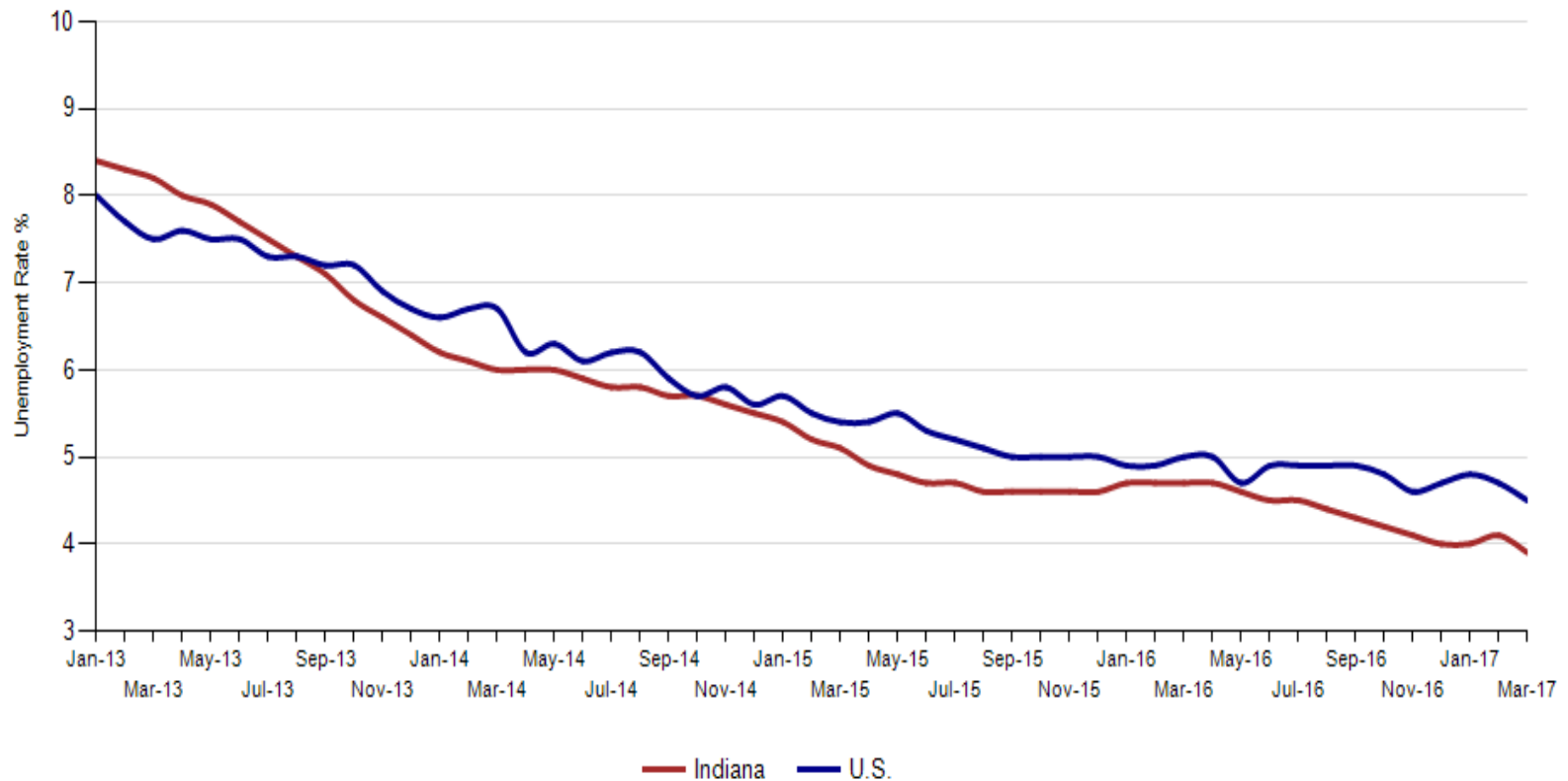
**Employment to Population Ratio (seasonally adjusted)**





## Comparison of Indiana and U.S. Unemployment rates over past four years.

Indiana and US Unemployment Rate





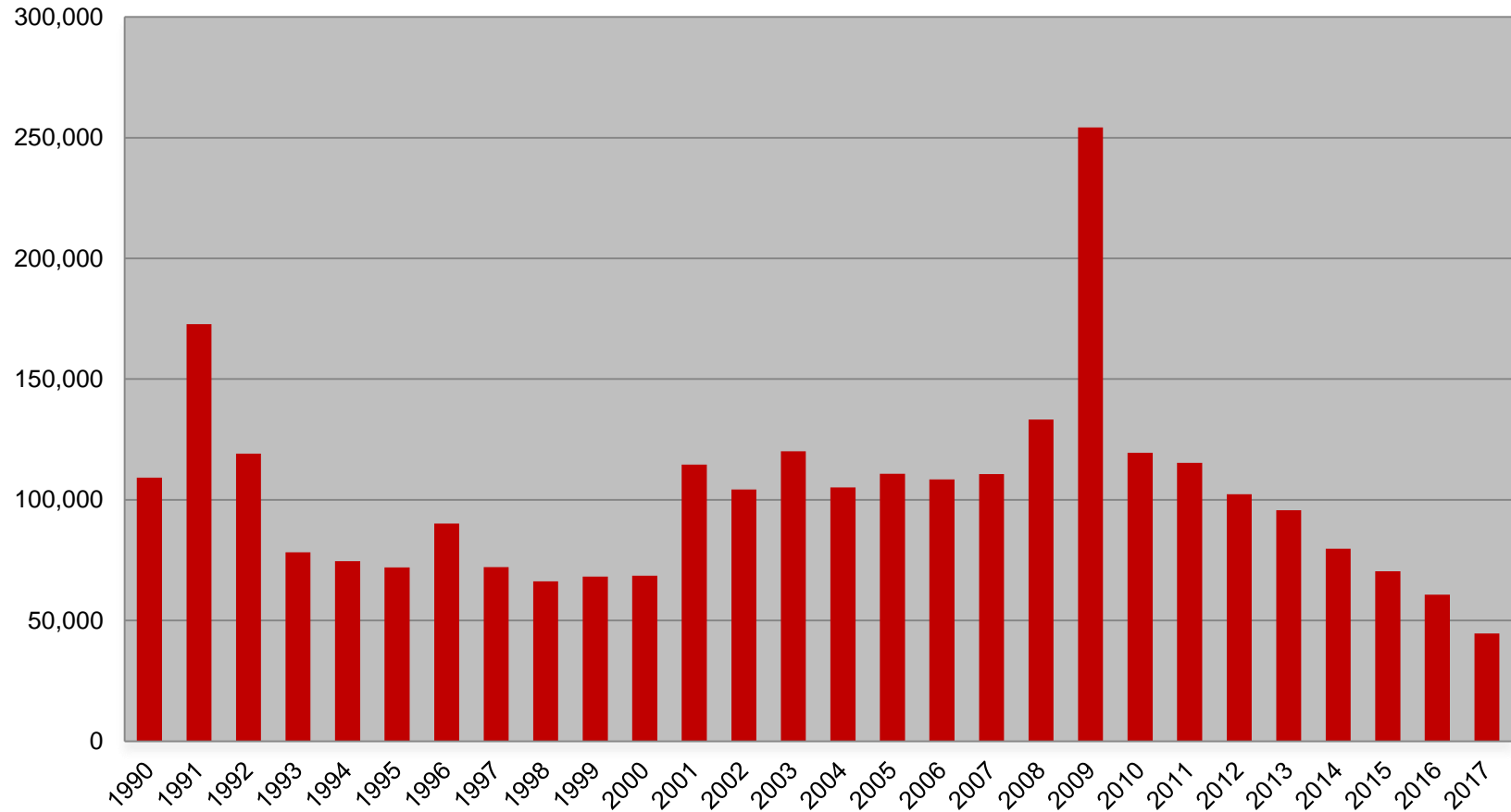
Midwest Comparison Rates: Seasonally  
Adjusted Over the Year and Over the Month  
(confidential and preliminary)

	March 2016	February 2017	March 2017	Monthly change	Yearly change
Indiana	4.7%	4.1%	3.9%	-0.2%	-0.8%
U.S.	5.0%	4.7%	4.5%	-0.2%	-0.5%
Illinois	6.1%	5.4%	4.9%	-0.5%	-1.2%
Kentucky	5.1%	5.0%	5.0%	0.0%	-0.1%
Michigan	4.9%	5.3%	5.1%	-0.2%	0.2%
Ohio	5.0%	5.1%	5.1%	0.0%	0.1%

\*2016 Benchmark



## Weekly Initial Claims – Week 14







# Regular UI Claims – Reference Week (12<sup>th</sup> of the month) Input to LAUS Unemployment Rate Model Declines over the month - and over the year

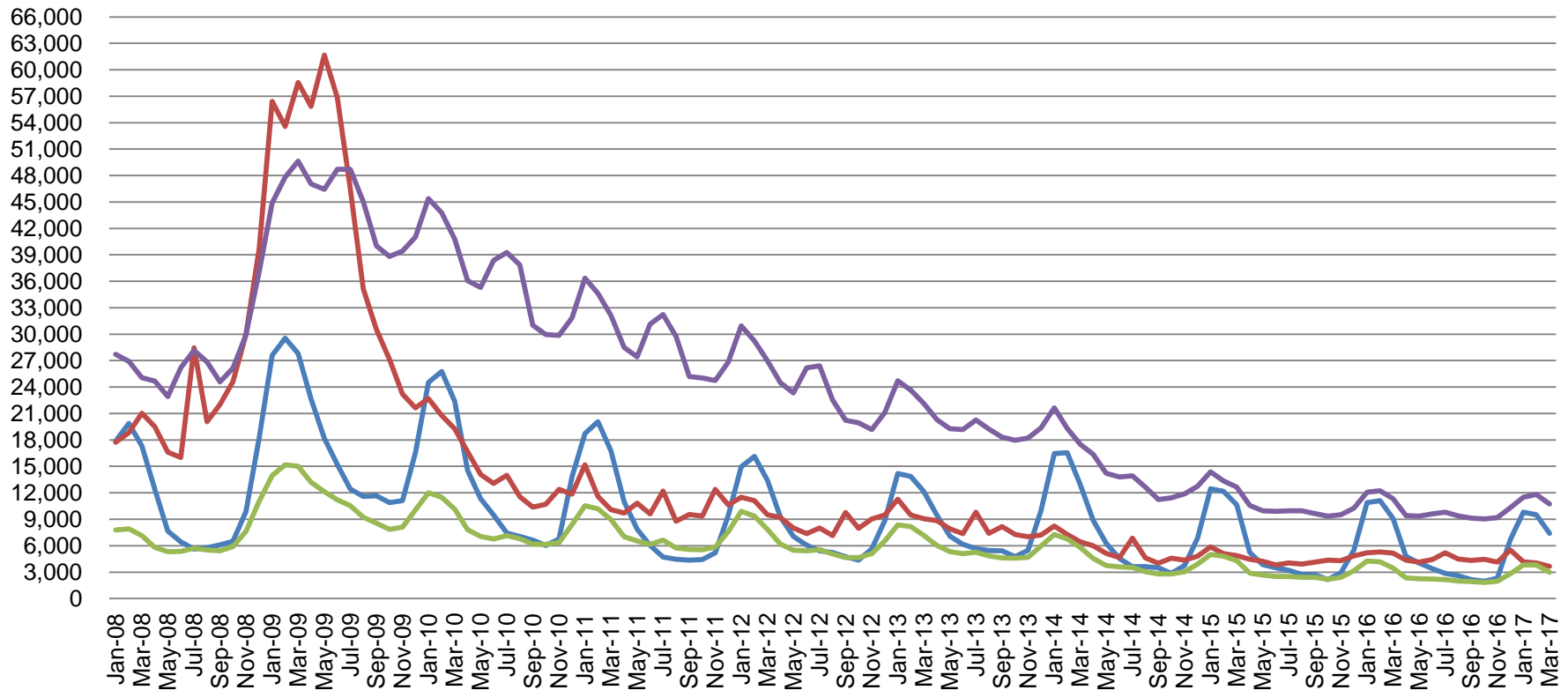
## Without earnings – Reference week claims

	2006	2007	2008	2009	2010	2011	2012	2013	2014	2015	2016	2017	OTM Change	OTY Change
JANUARY	65,898	71,296	75,294	150,888	105,910	84,706	71,042	63,223	49,377	41,333	36,555	33,137	8,538	(3,418)
FEBRUARY	67,347	75,432	78,068	154,388	103,432	80,852	69,570	60,183	52,316	39,282	36,909	32,463	(674)	(4,446)
MARCH	59,716	64,936	74,759	157,257	93,469	71,696	60,752	54,578	45,928	35,755	32,439	27,106	(5,357)	(5,333)
APRIL	48,103	53,325	64,948	143,842	74,481	59,036	51,652	48,548	39,717	25,597	23,895			
MAY	46,779	46,002	55,480	141,174	66,779	54,680	46,328	42,997	32,460	22,807	22,300			
JUNE	45,533	46,350	57,228	136,670	67,996	55,021	46,820	41,722	29,524	22,030	22,025			
JULY	53,424	51,141	72,032	121,336	69,447	58,031	47,268	44,597	30,845	22,341	22,326			
AUGUST	45,021	43,887	61,985	103,509	62,976	51,710	42,134	39,998	26,061	21,472	20,737			
SEPTEMBER	41,247	42,500	61,548	92,680	58,280	46,824	41,955	39,563	23,685	20,941	19,372			
OCTOBER	42,487	42,313	67,306	86,275	58,317	46,909	39,467	37,778	23,768	19,917	19,143			
NOVEMBER	43,868	45,362	81,466	82,451	58,846	51,201	41,018	38,517	25,315	21,199	19,547			
DECEMBER	53,566	54,201	109,651	91,814	65,279	55,104	46,371	42,484	30,982	26,249	24,599			



## Regular UI Claims by Industry

For the Reference Week of Each Month



Source: ETA 203

Construction

Manufacturing

Admin. and Support

All Other



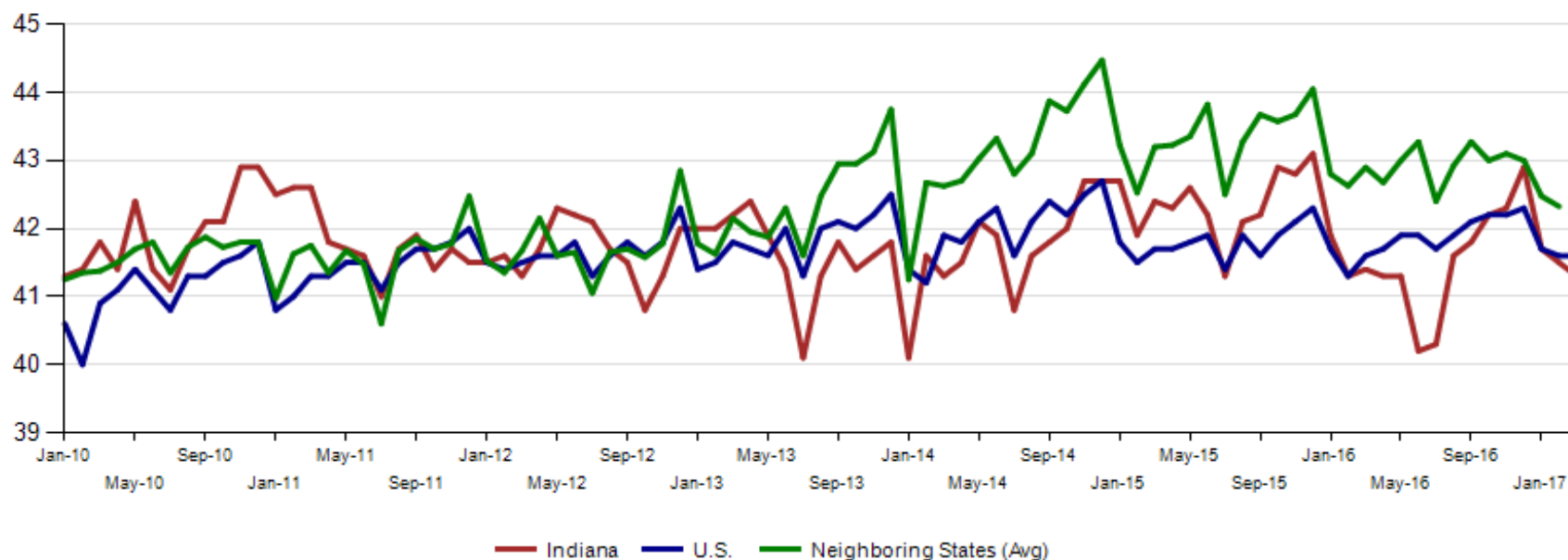
**Internal and external Indiana Career Connect job orders are 68,334 in March. Health Care & Social Services, Administrative & Support & Waste Management & Remediation Services (this includes temp help services) and Retail Trade top this list.**

													Current Duration
Mar-2017	Prior Year			Current Year			Change over Prior Year			Current Year Including External			(days)
NAICS_title	January	February	March	January	February	March	January	February	March	January	February	March	March
Total	8,346	9,177	9,877	10,401	10,087	10,753	25%	10%	9%	62,754	64,753	68,334	49
Health Care and Social Services	1,893	1,832	2,113	2,676	2,188	2,064	41%	19%	-2%	12,823	11,051	12,589	38
Admin. & Support & Waste Mgt. & Rem. Services	1,221	1,258	1,280	1,196	1,185	1,431	-2%	-6%	12%	9,362	9,777	9,876	46
Retail Trade	701	694	865	781	556	739	11%	-20%	-15%	9,179	7,877	9,763	45
Manufacturing	1,621	1,656	1,712	1,833	1,711	1,825	13%	3%	7%	4,278	4,308	5,050	52
Professional, Scientific, and Technical Services	615	733	778	832	929	889	35%	27%	14%	3,206	5,171	4,573	60
Accommodation and Food Services	143	178	186	563	860	618	294%	383%	232%	5,243	5,714	4,463	34
Transportation & Warehousing	464	345	387	398	378	421	-14%	10%	9%	3,435	4,260	3,600	81
Public Administration	211	157	196	132	180	245	-37%	15%	25%	1,873	2,430	3,447	78
Educational Services	98	848	612	534	549	599	445%	-35%	-2%	2,480	2,580	3,292	22
Finance and Insurance	254	209	223	219	224	274	-14%	7%	23%	2,549	2,766	2,607	82
Wholesale Trade	330	342	371	437	412	524	32%	20%	41%	1,995	2,072	2,439	32
Information	219	229	299	233	234	256	6%	2%	-14%	1,610	1,375	1,767	36
Real Estate and Rental and Leasing	93	101	146	112	168	207	20%	66%	42%	1,847	2,220	1,505	49
Management of Companies and Enterprises	32	26	20	6	7	18	-81%	-73%	-10%	779	1,126	1,041	114
Other Services(Except Public Administration)	151	163	238	179	196	253	19%	20%	6%	921	941	1,021	116
Construction	155	207	214	144	157	207	-7%	-24%	-3%	650	605	775	76
Utilities	93	80	127	65	64	90	-30%	-20%	-29%	253	219	254	42
Arts, Entertainment, and Recreation	17	41	50	24	19	17	41%	-54%	-66%	174	121	98	57
Agriculture, Forestry, Fishing and Hunting	21	34	40	21	44	57	0%	29%	43%	55	85	86	61
Mining	3	34	12	7	9	6	133%	-74%	-50%	33	38	75	56
Unallocated	11	10	8	9	17	13	-18%	70%	63%	9	17	13	145



March 2017 average weekly hours for Indiana manufacturing production decreased to 41.3 and are now behind the national manufacturing weekly hours of 41.6. Neighboring states were at 42.3 hours (February data).

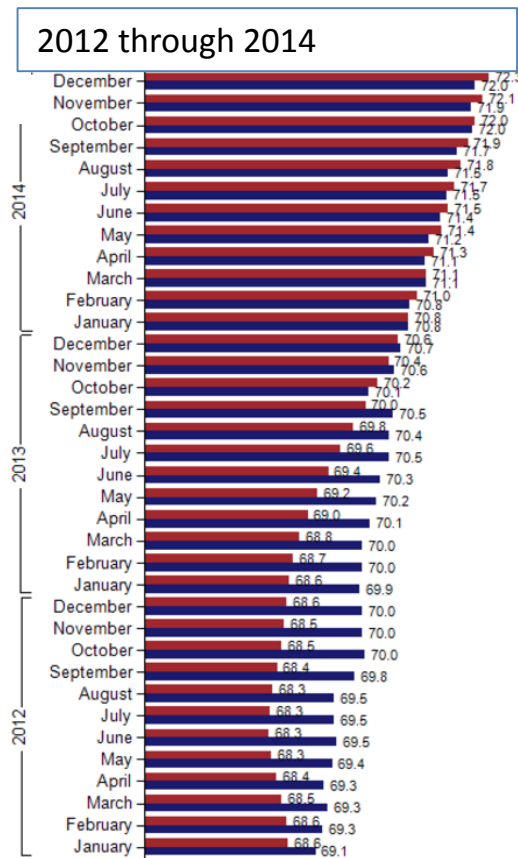
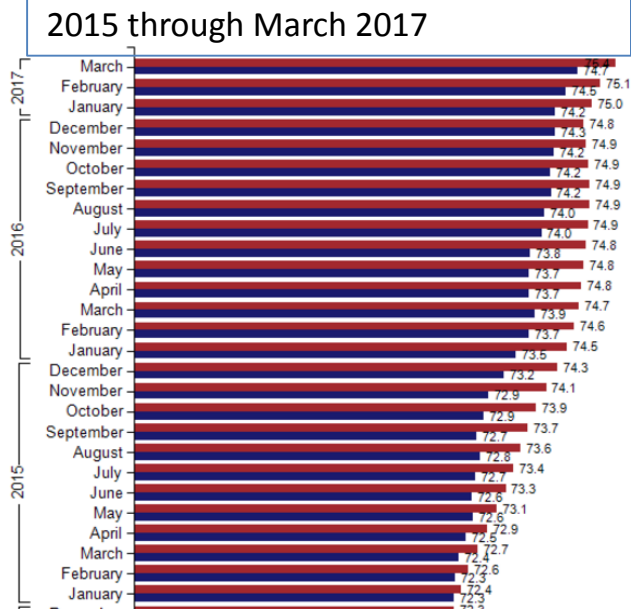
**Avg. Weekly Manufacturing Production Hours (non seasonally adjusted)**



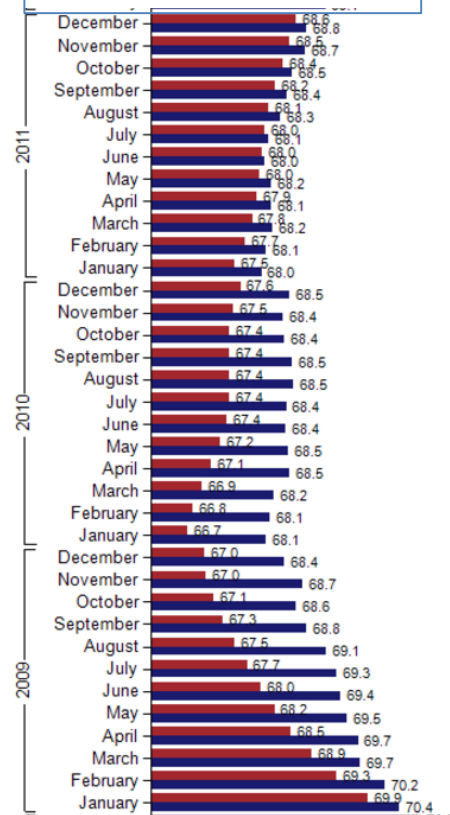


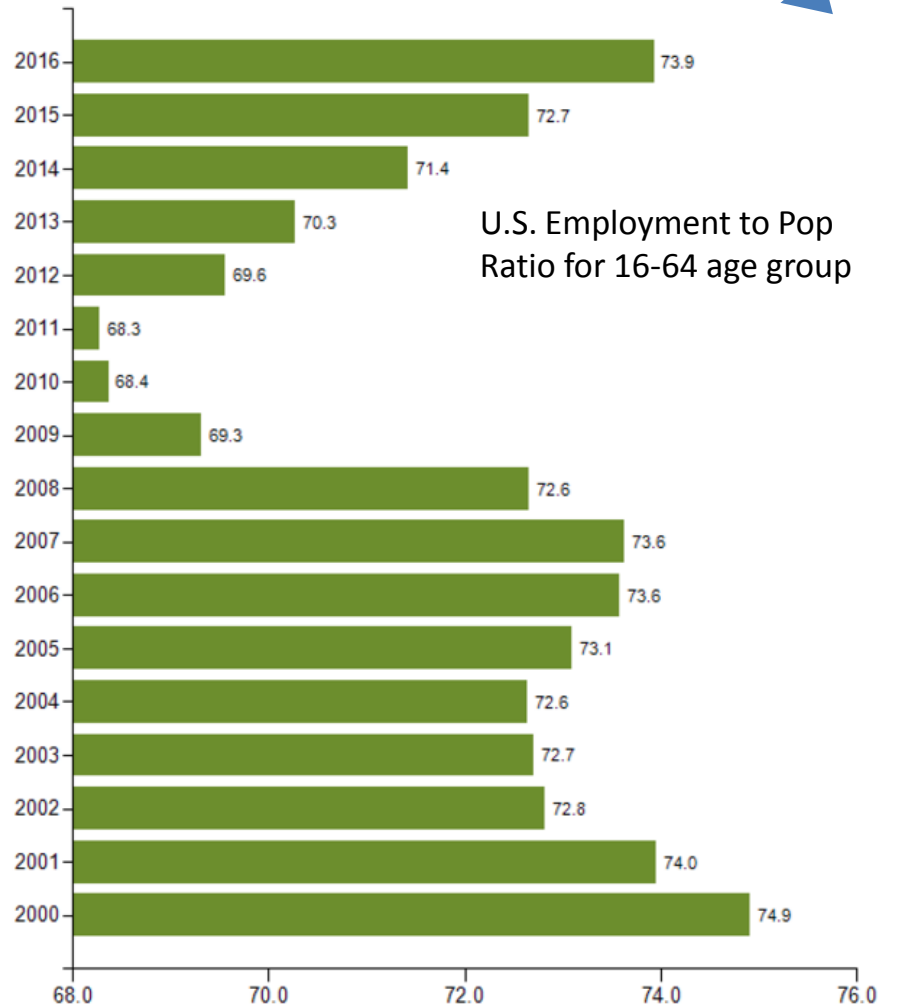
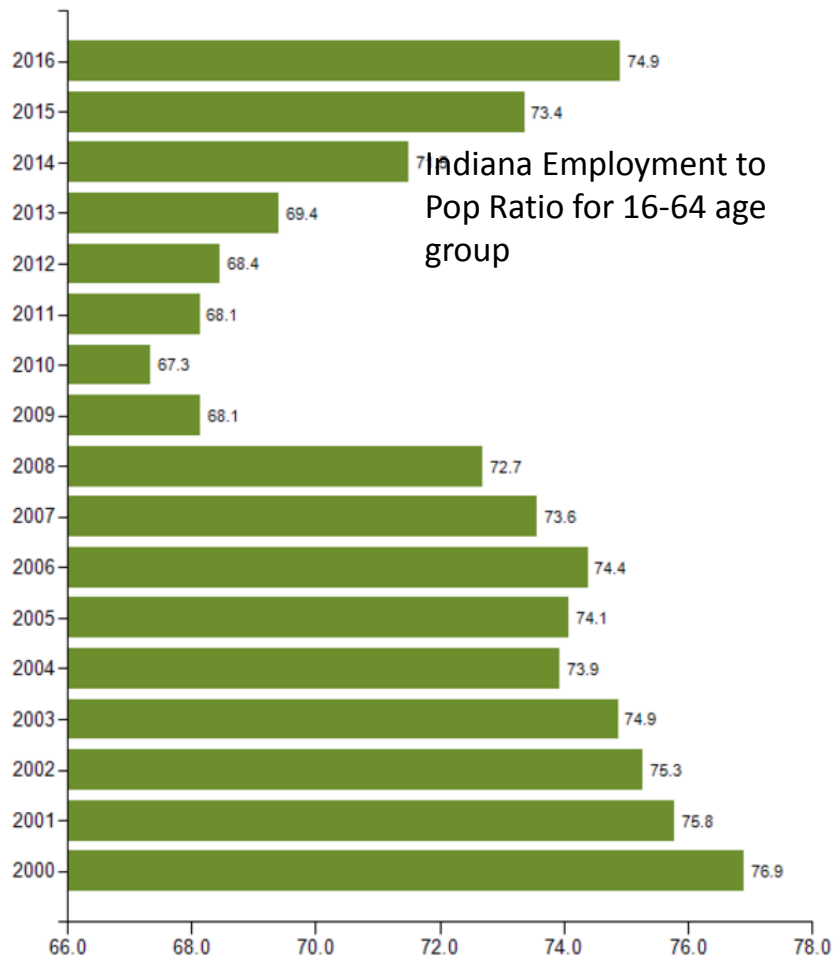
## IN & US Employment to Population Ratio (16-64) - SA

■ Indiana ■ U.S.



**2009 through 2011 –  
the Recession**







## Indiana Labor Force - Annual Average (NSA)

