

Indiana's Employment and Labor Force Estimates February 2021

03/24/2021

Data is embargoed until 10 AM March 26

Key Points

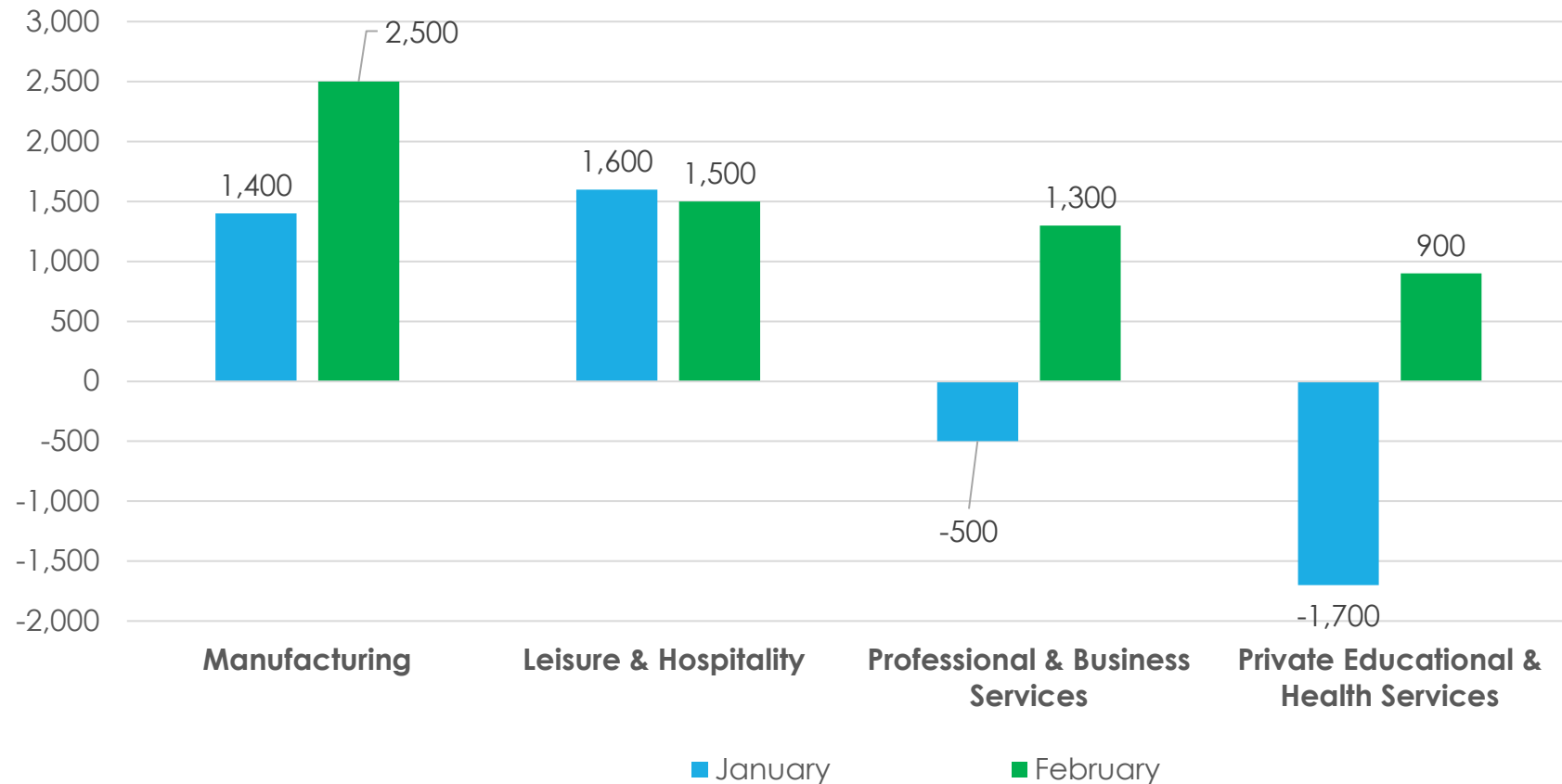
- **Indiana's unemployment rate stands at 4.0% in February 2021. The U.S. is at 6.2%.**
- **Indiana's Labor Force is at 3,342,839.**
- Indiana's Labor Force decreased by 4,971 due to an increase in employment of 2,431 and a decrease in unemployment of 7,402.
- Indiana's Labor Force has decreased 16,321 over the year.
- Indiana's Labor Force Participation Rate is at 63.2%. This is above the U.S. Labor Force Participation Rate of 61.4%.

Key Points: February 2021

Indiana's Private Employment

- Decreased by 6,600 jobs over the month and had loses of 113,400 over the year.
- February private employment = 2,622,000.

Private Industry Employment



Comparing Local Area Unemployment Statistics (LAUS) and Current Employment Statistics (CES)

LAUS (Labor Force by Residence)

This counts people, not jobs, and is...

- An estimate of employment based on where the employee lives, rather than where they work
- Used in calculating the labor force

CES (Employment by Job)

This counts jobs, not people, and is...

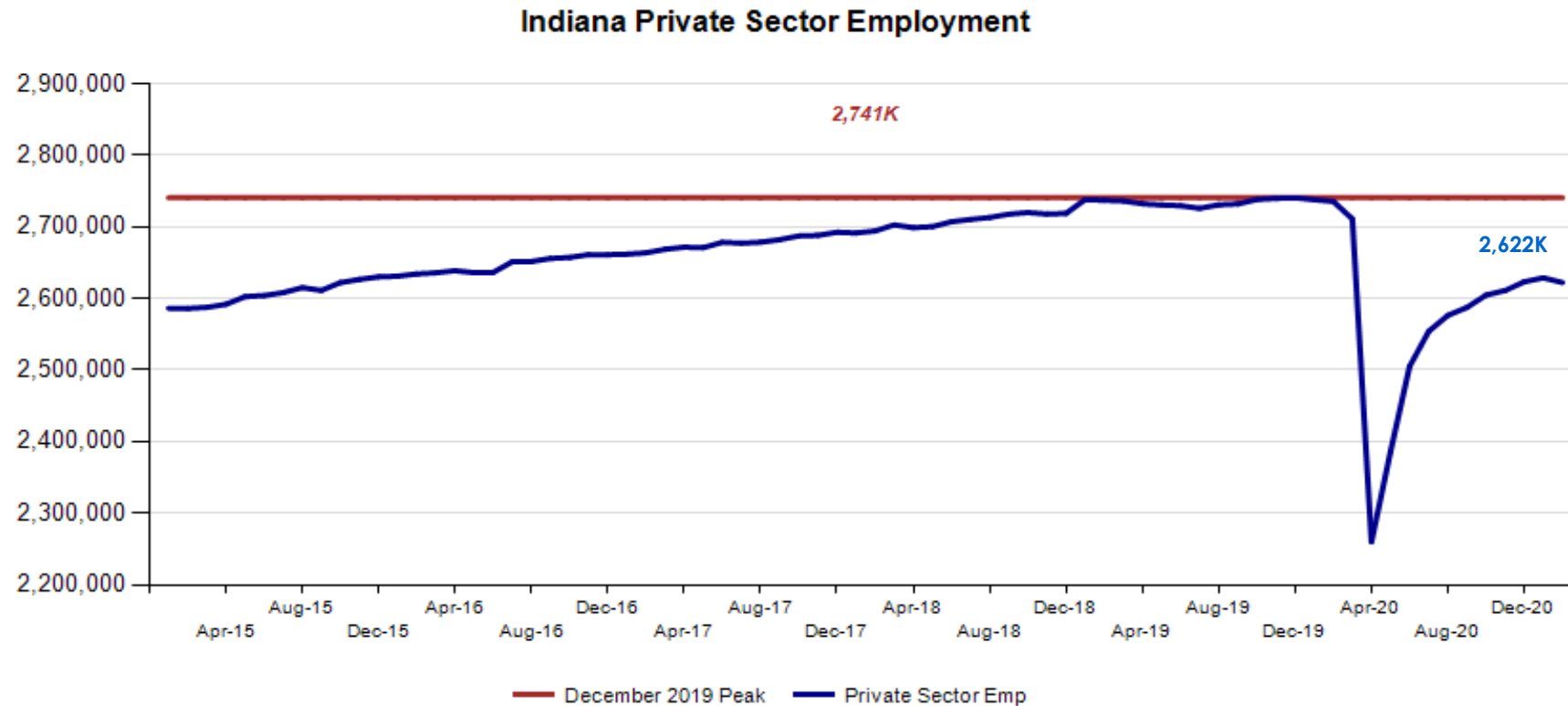
- An estimate of employment based on the location of the job regardless of the worker's residence
- Also called nonag wage and salary or nonfarm employment
- Used in Quarterly Census of Employment and Wages (QCEW), Occupational Employment Statistics (OES) and CES data

Revisions to JANUARY 2021 Estimates						
INDUSTRY TITLE	Dec	Jan Prel	Jan Rev	Revision	Chg from Dec	Pre Chg from Dec
Total Nonfarm	3024.8	3029.0	3031.3	2.3	6.5	4.2
Total Private	2623.1	2626.4	2628.6	2.2	5.5	3.3
Goods Producing	674.9	676.7	676.2	-0.5	1.3	1.8
Service-Providing	2349.9	2352.3	2355.1	2.8	5.2	2.4
Private Service Providing	1948.2	1949.7	1952.4	2.7	4.2	1.5
Construction	150.3	150.5	150.2	-0.3	-0.1	0.2
Manufacturing	519.5	520.9	520.8	-0.1	1.3	1.4
Trade, Transportation, and Utilities	605.1	606.5	606.0	-0.5	0.9	1.4
Wholesale Trade	118.8	118.6	118.5	-0.1	-0.3	-0.2
Retail Trade	314.3	316.6	316.6	0.0	2.3	2.3
Transportation, Warehousing, and Utilities	172.0	171.3	170.9	-0.4	-1.1	-0.7
Information	23.6	23.6	24.6	1.0	1.0	0.0
Financial Activities	141.0	140.9	140.7	-0.2	-0.3	-0.1
Finance and Insurance	106.5	106.5	106.4	-0.1	-0.1	0.0
Real Estate and Rental and Leasing	34.5	34.4	34.3	-0.1	-0.2	-0.1
Professional and Business Services	333.9	333.4	334.1	0.7	0.2	-0.5
Professional, Scientific, and Technical Services	124.1	126.7	125.5	-1.2	1.4	2.6
Management of Companies and Enterprises	36.1	36.2	36.0	-0.2	-0.1	0.1
Admin & Support & Waste Mgmt & Remediation Services	173.7	170.5	172.6	2.1	-1.1	-3.2
Education and Health Services	461.3	459.6	461.5	1.9	0.2	-1.7
Educational Services	51.8	51.8	53.2	1.4	1.4	0.0
Health Care and Social Assistance	409.5	407.8	408.3	0.5	-1.2	-1.7
Leisure and Hospitality	270.7	272.3	272.7	0.4	2.0	1.6
Other Services	112.6	113.4	112.8	-0.6	0.2	0.8
Government	401.7	402.6	402.7	0.1	1.0	0.9

CES Monthly Jobs Report

Indiana Private Sector Employment

February 2021 total private employment is 118,500 below the December 2019 peak.



Indiana Private Sector Employment Change

February 2021 decreased by 6,600 jobs over the month and is down 113,400 jobs over the year.

IN Employment Change Over the Month, Year-to-Date and Over the Year (seasonally adjusted)

Industry	February 2020	December 2020	January 2021	February 2021	Month Change	Y-to-D Change	Y-to-Y Change
Private Educational & Health Services	481.5	461.3	461.5	462.4	0.9	1.1	-19.1
.....Private Educational Services	60.1	51.8	53.2	54.3	1.1	2.5	-5.8
.....Health Care & Social Assistance	421.4	409.5	408.3	408.1	-0.2	-1.4	-13.3
Manufacturing	536.0	519.5	520.8	523.3	2.5	3.8	-12.7
Professional & Business Services	347.4	333.9	334.1	335.4	1.3	1.5	-12.0
Financial Activities	143.5	141.0	140.7	139.8	-0.9	-1.2	-3.7
Construction	149.1	150.3	150.2	144.1	-6.1	-6.2	-5.0
Leisure and Hospitality	315.6	270.7	272.7	274.2	1.5	3.5	-41.4
Trade, Transportation & Utilities	599.1	605.1	606.0	600.5	-5.5	-4.6	1.4
.....Trade	437.3	433.1	435.1	432.2	-2.9	-0.9	-5.1
.....Transportation, Warehousing & Utilities	161.8	172.0	170.9	168.3	-2.6	-3.7	6.5
All Other	163.2	141.3	142.6	142.3	-0.3	1.0	-20.9
Total Private	2,735.4	2,623.1	2,628.6	2,622.0	-6.6	-1.1	-113.4
Government (Includes Public Schools & Hospitals)	428.4	401.7	402.7	403.8	1.1	2.1	-24.6
Total Nonfarm	3,163.8	3,024.8	3,031.3	3,025.8	-5.5	1.0	-138.0
United States Total Private	129,688.0	121,047.0	121,137.0	121,602.0	465.0	555.0	-8,086.0

- Manufacturing **recovered 2,500** jobs over the month.
- Leisure & Hospitality **recovered 1,500** jobs over the month.

Source: Current Employment Statistics (seasonally adjusted)

For month to month change, [visit this link](#).

Indiana Private Sector Employment Change From Peak and Trough

Benchmark process created a new peak and trough. Peak now Dec. 2019, trough April 2020
February 2021 estimates show Indiana private jobs decreased 118,500 since December 2019.

IN Statewide Estimates (seasonally adjusted) -- February 2021

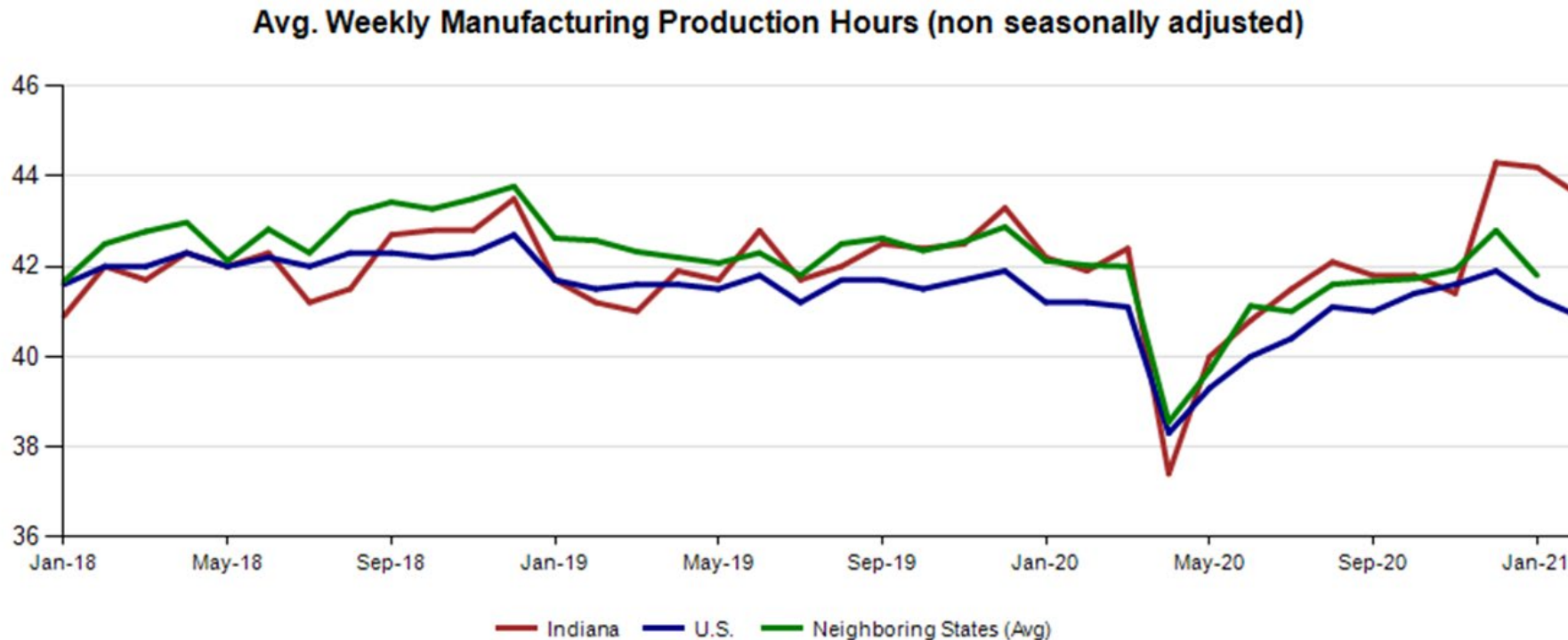
Supersector	Private Empl. Peak December 2019	Private Empl. Trough April 2020	January 2021	February 2021	Change Since Peak	Change Since Trough	Month to Month Change
Private Educational & Health Services	483.4	435.0	461.5	462.4	-21.0	27.4	0.9
.....Private Educational Services	62.9	51.0	53.2	54.3	-8.6	3.3	1.1
.....Health Care & Social Assistance	420.5	384.0	408.3	408.1	-12.4	24.1	-0.2
Manufacturing	537.7	421.4	520.8	523.3	-14.4	101.9	2.5
Professional & Business Services	346.9	297.8	334.1	335.4	-11.5	37.6	1.3
Financial Activities	143.0	137.8	140.7	139.8	-3.2	2.0	-0.9
Construction	147.3	132.7	150.2	144.1	-3.2	11.4	-6.1
Leisure and Hospitality	314.7	178.0	272.7	274.2	-40.5	96.2	1.5
Trade, Transportation & Utilities	604.9	542.3	606.0	600.5	-4.4	58.2	-5.5
.....Trade	439.4	386.1	435.1	432.2	-7.2	46.1	-2.9
.....Transportation, Warehousing & Utilities	165.5	156.2	170.9	168.3	2.8	12.1	-2.6
All Other	162.6	114.9	142.6	142.3	-20.3	27.4	-0.3
Total Private	2,740.5	2,259.9	2,628.6	2,622.0	-118.5	362.1	-6.6
Government (Includes Public Schools & Hospitals)	427.8	404.6	402.7	403.8	-24.0	-0.8	1.1
Total Nonfarm	3,168.3	2,664.5	3,031.3	3,025.8	-142.5	361.3	-5.5
United States Total Private	129,190.0	108,335.0	121,137.0	121,602.0	-7,588.0	13,267.0	465.0

For historical data, [visit this link.](#)

Source: Current Employment Statistics (seasonally adjusted)

Avg. Weekly Manufacturing Production Hours

February 2021 average weekly hours for Indiana manufacturing production hours decreased by 0.6 hours to 43.6 hours. National manufacturing hours decreased by 0.4 hours to 40.9 weekly hours, and Midwest states increased at 1.0 hours to 41.8 hours (January 2021 data).



Monthly Labor Force Report

Gen5 STARS Monthly Estimation Tables, Official Indiana, 2021

Table 1: Year-to-Date Benchmarked Model Estimates

Table 1a: Smoothed Seasonally Adjusted

(SSA Est. appear as the seasonally adjusted in BLS and State official publications and databases)

	Labor Force		Employment		Unemployment		
Month	Level	LFP	Level	EP	Level	Rate	Error Range ⁺
JAN	3,347,810	63.3	**3,206,431	**60.7	**141,379	**4.2	3.5- 4.9
FEB	3,342,839	63.2	3,208,862	60.7	**133,977	**4.0	3.3- 4.7

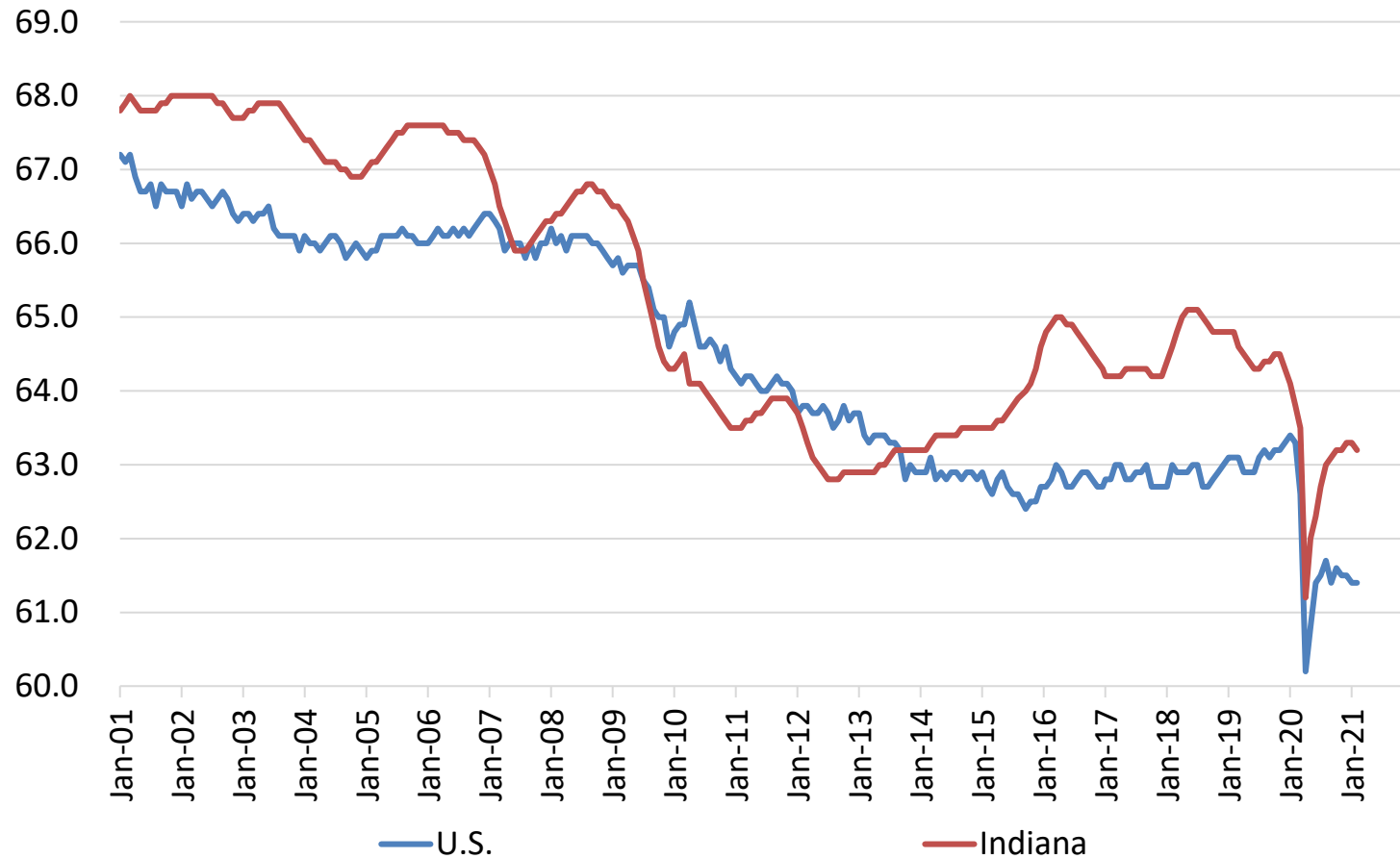
Jobs Data for February 2021

Month NSA	Labor Force	Employed	Unemployed	IN Rate	Total NonFarm	Total Private	Regular UI Claims
Dec-16	3,288,829	3,164,196	124,633	3.8	3,112,000	2,672,400	24,599
Feb-21	3,300,855	3,144,768	156,087	4.7	2,991,500	2,578,000	50,605
Change	12,026	(19,428)	31,454	0.9	(120,500)	(94,400)	26,006

Month SA	Labor Force	Employed	Unemployed	IN Rate	Total NonFarm	Total Private	Regular UI Claims
Dec-16	3,317,083	3,185,941	131,142	4.0	3,086,600	2,661,000	24,599
Feb-21	3,342,839	3,208,862	133,977	4.0	3,025,800	2,622,000	50,605
Change	25,756	22,921	2,835	-	(60,800)	(39,000)	26,006

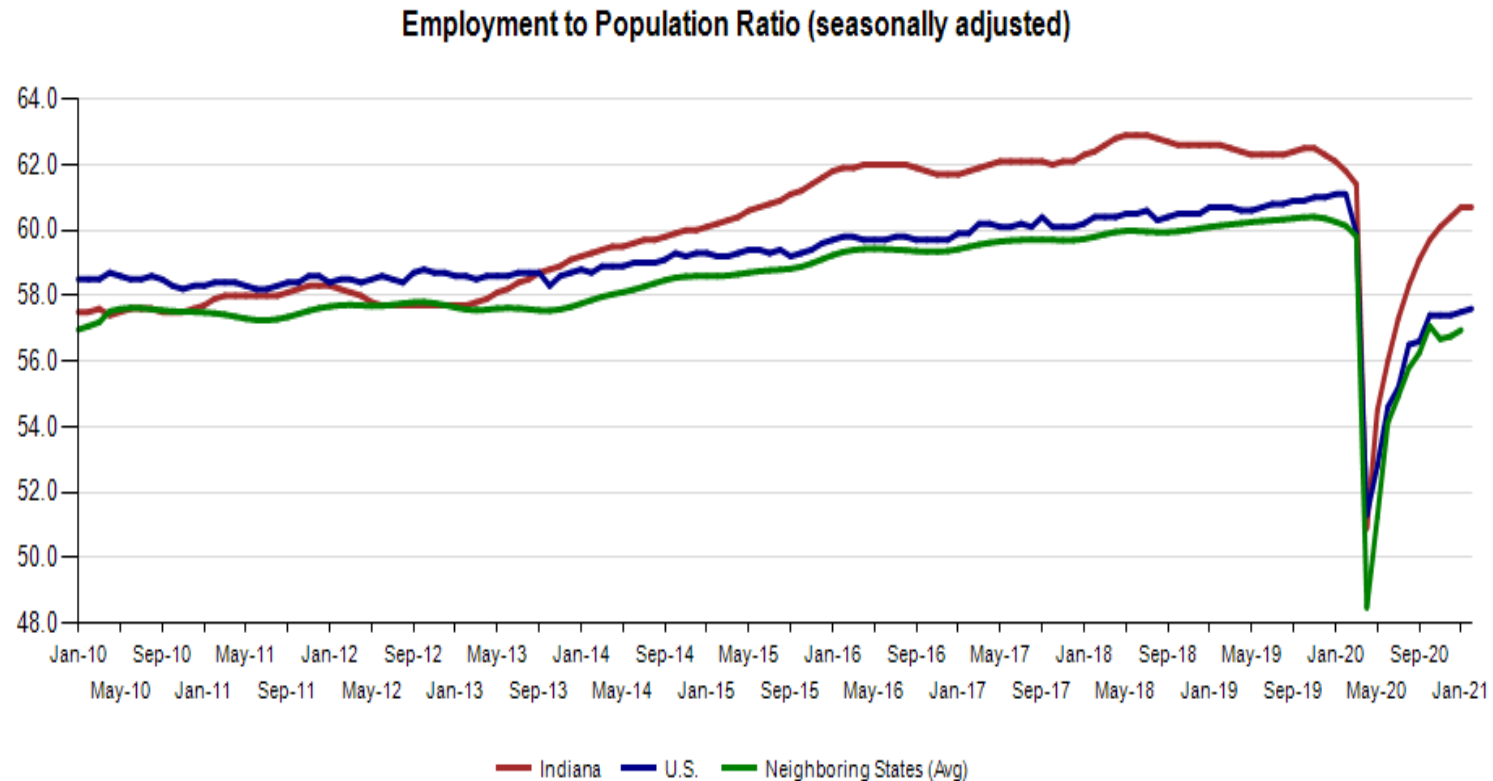
Indiana Labor Force Participation Rate Compared to U.S.

Indiana is at 63.2% compared to the U.S. at 61.4%



Employment to Population Ratio (seasonally adjusted)

The Indiana Employment to Population Ratio for February 2021 is 60.7% compared to the U.S. at 57.6% and border states at 56.9% (January)



Midwest Comparison Rates: Seasonally Adjusted Over the Year and Over the Month

	Feb-20	Jan-21	Feb-21	Monthly change	Yearly change
Indiana	3.2%	4.2%	4.0%	-0.2%	0.8%
U.S.	3.5%	6.3%	6.2%	-0.1%	2.7%
Illinois	3.6%	7.7%	7.4%	-0.3%	3.8%
Kentucky	4.2%	5.3%	5.2%	-0.1%	1.0%
Michigan	3.7%	5.7%	5.2%	-0.5%	1.5%
Minnesota	3.3%	4.5%	4.3%	-0.2%	1.0%
Ohio	4.7%	5.3%	5.0%	-0.3%	0.3%
Wisconsin	3.3%	3.8%	3.8%	0.0%	0.5%

*2020 Benchmark

Confidential & Deliberative

Alternative Measures of Labor Underutilization 2020 Annual Averages

State	U-1	U-2	U-3	U-4	U-5	U-6
Illinois	3.1	7.1	9.1	9.4	10.0	14.1
Indiana	1.8	5.4	7.1	7.3	7.9	11.5
Kentucky	2.3	4.8	6.7	6.9	7.5	10.3
Michigan	2.9	7.6	9.8	10.1	11.0	15.3
Minnesota	2.1	4.4	5.9	6.0	6.8	10.4
Ohio	2.2	5.9	8.3	8.6	9.3	13.0
Wisconsin	2.0	5.1	6.4	6.6	7.1	11.1
United States	2.8	6.1	8.1	8.4	9.2	13.6

The six state measures are based on the same definitions as those published for the U.S.:

- U-1, persons unemployed 15 weeks or longer, as a percent of the civilian labor force;
- U-2, job losers and persons who completed temporary jobs, as a percent of the civilian labor force;
- U-3, total unemployed, as a percent of the civilian labor force (this is the definition used for the official unemployment rate);
- U-4, total unemployed plus discouraged workers, as a percent of the civilian labor force plus discouraged workers;
- U-5, total unemployed, plus discouraged workers, plus all other marginally attached workers, as a percent of the civilian labor force plus all marginally attached workers; and
- U-6, total unemployed, plus all marginally attached workers, plus total employed part time for economic reasons, as a percent of the civilian labor force plus all marginally attached workers.

Indiana: Not in the Labor Force by Gender and Age

March 2020 – February 2021
Current Population Survey, Bureau of Labor Statistics (in 1000s)

	Total	Age			Sex	
		16 to 24 years	25 to 54 years	55 years and over	Men	Women
	Indiana					
Total not in the labor force	1,952.8	354.0	457.2	1,141.6	796.3	1,156.5
Do not want a job now	1,832.6	314.3	400.7	1,117.6	731.7	1,101.0
Want a job	120.2	39.8	56.4	24.0	64.6	55.6
Did not search for work in previous year	79.6	28.6	35.2	15.8	40.7	38.9
Searched for work in previous year	40.6	11.2	21.3	8.1	24.0	16.6
Not available to work now	12.2	5.3	5.2	1.8	6.5	5.8
Available to work now	28.3	5.9	16.1	6.3	17.5	10.8
Reason not currently looking:						
Discouragement over job prospects	6.0	1.3	4.0	0.7	3.9	2.1
Reasons other than discouragement	22.3	4.6	12.1	5.6	13.6	8.7

- Data not available

Source: Table b. Civilians not in the labor force by sex and age,
March 2020 - February 2021 (based on CPS) (Numbers in
thousands)

Indiana: Labor Force by Race and Age

March 2020 – February 2021

Current Population Survey, Bureau of Labor Statistics (in 1000s)

	Civilian labor force participation rate	Unemployment rate
Both Sexes		
All Races		
Age 16+	63.1	7.3
Age 16-19	39.8	15.4
Age 20+	64.8	6.9
White		
Age 16+	63.4	6.6
Age 16-19	41.7	15.1
Age 20+	65.0	6.2
Black		
Age 16+	59.0	11.9
Age 16-19	34.8	19.2
Age 20+	60.3	11.6
Hispanic		
Age 16+	69.0	9.8
Age 16-19	36.8	15.2
Age 20+	73.9	9.4

Source: Table a. Employment status of the civilian non-institutional population by sex, age, race, and Hispanic origin, March 2020 - February 2021 (based on CPS)
(Numbers in thousands)

Indiana: Labor Force by Gender and Age

March 2020 – February 2021

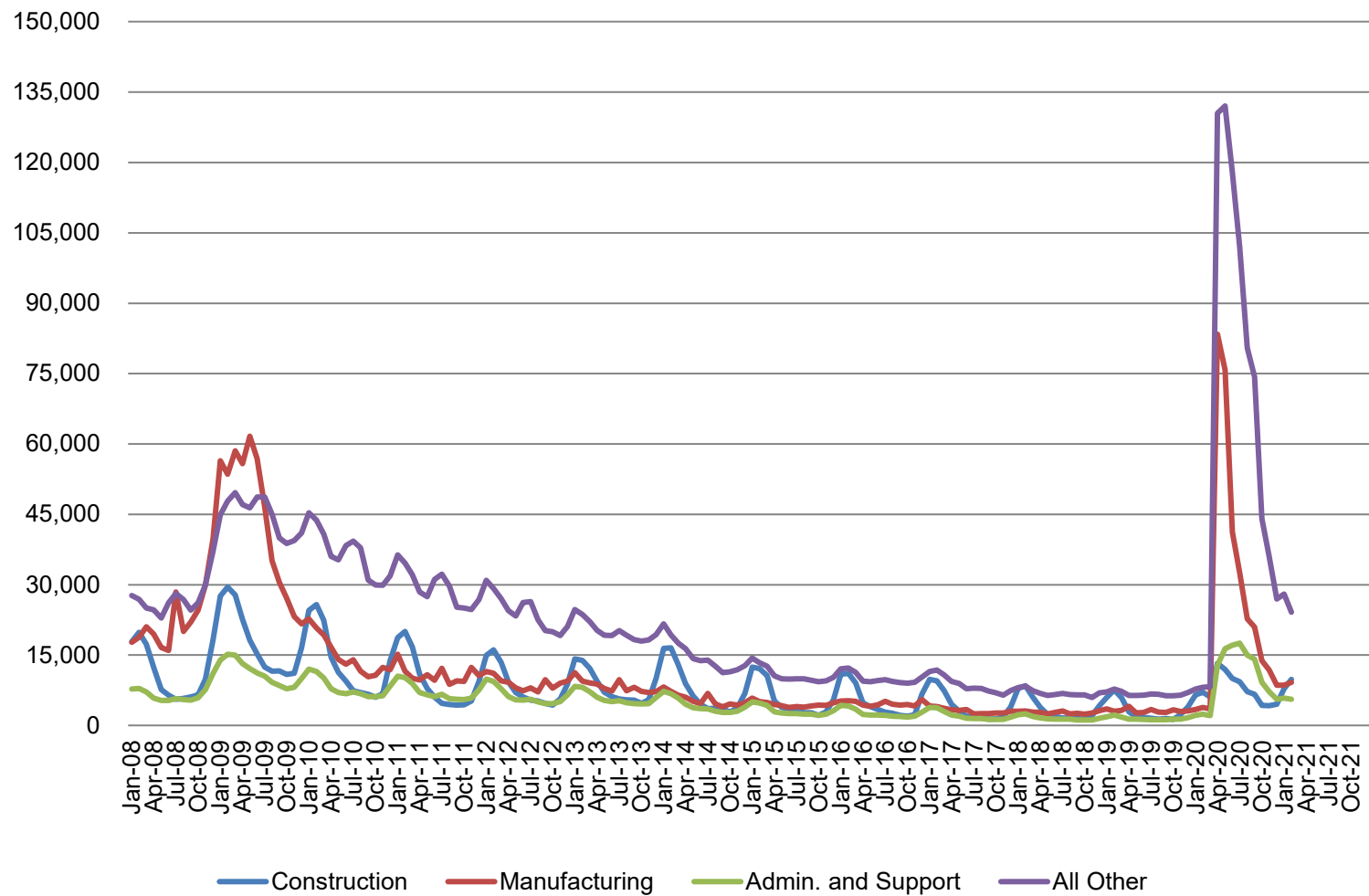
Current Population Survey, Bureau of Labor Statistics (in 1000s)

	Civilian labor force participation rate	Unemployment rate
Male, All Races		
Age 16+	69.0	7.0
Age 20+	71.5	6.6
Female, All Races		
Age 16+	57.5	7.7
Age 20+	58.5	7.3
Male, White		
Age 16+	69.4	6.4
Age 20+	71.5	6.0
Female, White		
Age 16+	57.7	6.8
Age 20+	58.8	6.4
Male, Black		
Age 16+	63.8	10.1
Age 20+	65.9	9.5
Female, Black		
Age 16+	54.8	13.7
Age 20+	55.7	13.8

Source: Table a. Employment status of the civilian non-institutional population by sex, age, race, and Hispanic origin, March 2020 - February 2021 (based on CPS)
(Numbers in thousands)

Regular UI Claims by Industry

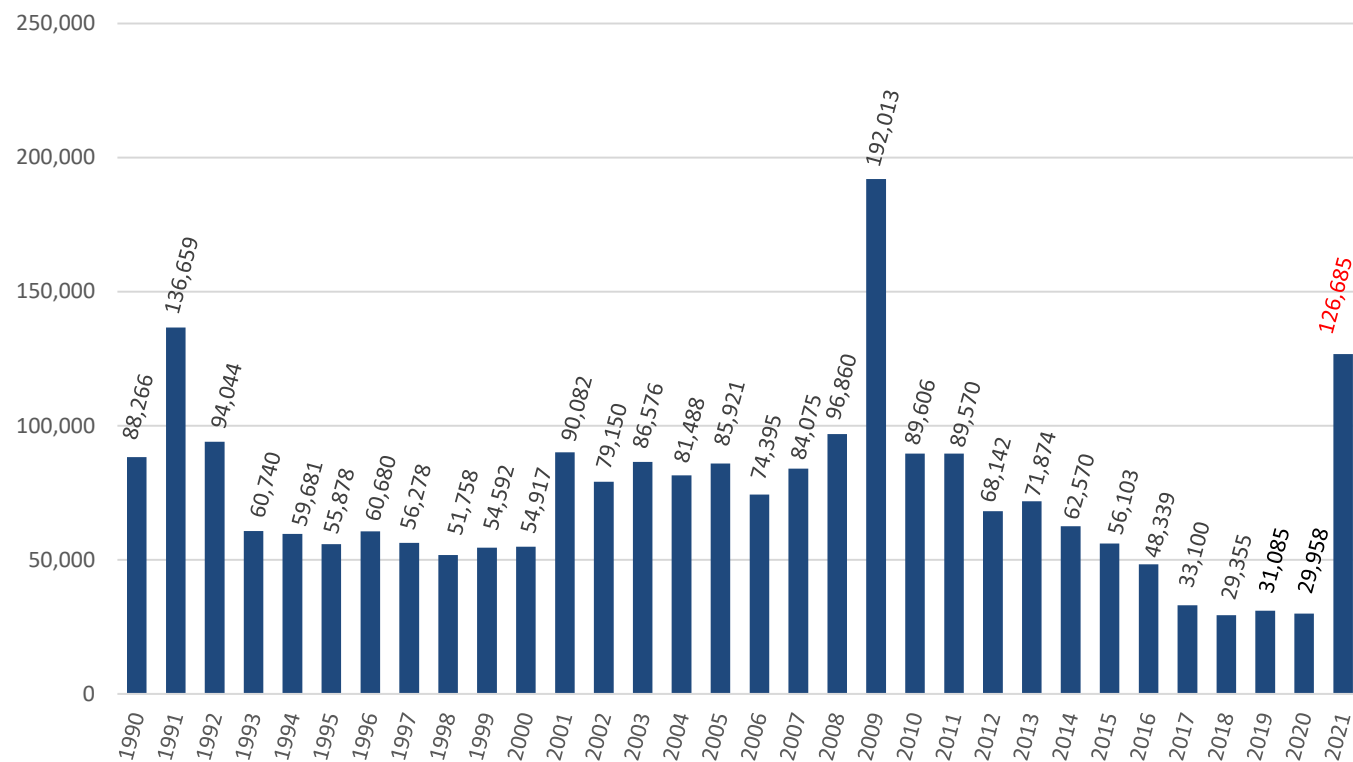
For the Reference Week of Each Month



Source: ETA 203

Weekly Initial Claims – Week 10

Total aggregated UI claims for the first 10 weeks of each year as reported to ETA.



Regular UI Claims

Reference Week (12th of the month) Input to LAUS Unemployment Rate Model

	2009	2013	2014	2015	2016	2017	2018	2019	2020	2021	OTM Change	OTY Change
JANUARY	150,888	63,223	49,377	41,333	36,555	33,137	24,968	21,808	23,526	66,640	15,003	43,114
FEBRUARY	154,388	60,183	52,316	39,282	36,909	32,463	25,879	23,992	25,050	50,605	(16,035)	25,555
MARCH	157,257	54,578	45,928	35,755	32,439	32,141	21,171	22,446	22,555			
APRIL	143,842	48,548	39,717	25,597	23,895	21,998	17,618	17,914	264,727			
MAY	141,174	42,997	32,460	22,807	22,300	19,431	14,774	14,411	256,319			
JUNE	136,670	41,722	29,524	22,030	22,025	16,722	14,653	14,386	199,864			
JULY	121,336	44,597	30,845	22,341	22,326	15,775	15,098	15,054	177,347			
AUGUST	103,509	39,998	26,061	21,472	20,737	15,692	13,959	14,156	140,695			
SEPTEMBER	92,680	39,563	23,685	20,941	19,372	14,334	12,981	13,620	127,098			
OCTOBER	86,275	37,778	23,768	19,917	19,143	14,266	13,083	14,106	77,510			
NOVEMBER	82,451	38,517	25,315	21,199	19,547	14,347	15,499	14,274	61,772			
DECEMBER	91,814	42,484	30,982	26,249	24,599	17,345	16,693	16,816	51,637			

*Without earnings – Reference week claims

Purchasing Managers' Index (PMI)

- The Purchasing Managers Index (PMI) is a measure of the prevailing direction of economic trends in manufacturing.
- The PMI is based on a monthly survey of supply chain managers across 19 industries, covering both upstream and downstream activity.
- The value and movements in the PMI and its components can provide useful insight to business decision makers, market analysts, and investors, and is a leading indicator of overall economic activity in the U.S.

PMI is a number from 0 to 100. A PMI above 50 represents an expansion when compared with the previous month. A PMI reading under 50 represents a contraction.

MANUFACTURING AT A GLANCE						
February 2021						
Index	Series Index	Series Index	Percentage	Direction	Rate of Change	Trend* (Months)
	Feb	Jan	Point			
			Change			
Manufacturing PMI®	60.8	58.7	2.1	Growing	Faster	9
New Orders	64.8	61.1	3.7	Growing	Faster	9
Production	63.2	60.7	2.5	Growing	Faster	9
Employment	54.4	52.6	1.8	Growing	Faster	3
Supplier Deliveries	72	68.2	3.8	Slowing	Faster	60
Inventories	49.7	50.8	-1.1	Contracting	From Growing	1
Customers' Inventories	32.5	33.1	-0.6	Too Low	Faster	55
Prices	86	82.1	3.9	Increasing	Faster	9
Backlog of Orders	64	59.7	4.3	Growing	Faster	8
New Export Orders	57.2	54.9	2.3	Growing	Faster	8
Imports	56.1	56.8	-0.7	Growing	Slower	8
OVERALL ECONOMY				Growing	Faster	9
Manufacturing Sector				Growing	Faster	9